



**GE INDUSTRIAL MOTORS**  
a **WOLONG** company

# Product Technical Information

November 6, 2020

Data shown is for the current revision model #. Ensure your nameplate model # matches.

<b>Model Number:</b>	<b>5KS404DAJ7008B</b>
<b>Catalog Number:</b>	<b>V4607</b>
<b>Instruction Manual:</b>	GEI-M1045
<b>Connection Diagram:</b>	GEM2034E-FIG19
<b>Outline Drawing:</b>	148CB40VMHKCCAA0001

Accessory Connection Diagrams			
<b>Bearing Thermocouple:</b>	None	<b>Heater:</b>	3027JE-1C
<b>RTD:</b>	None	<b>Thermistor:</b>	None
<b>Thermostat:</b>	None	<b>Winding Thermocouple:</b>	None
<b>Bearing RTD:</b>	None		

## Table of Contents

Specification	01
Performance Characteristics	02
Outline Drawing	03
Connection Drawing(s)	04
Spare parts	05

Marks:

<b>MODEL NUMBER:</b>	<b>5KS404DAJ7008B</b>	<b>Estimated Weight:</b>	1090 Lbs
<b>Outline Drawing:</b>	148CB40VMHKCCAA0001	<b>Time Rating:</b>	CONT
<b>Connection Diagram:</b>	GEM2034E-FIG19	<b>Enclosure:</b>	WPI
<b>Instruction Book:</b>	GEI-M1045	<b>Encl Construction:</b>	OPEN
<b>Design Code:</b>	40BD3078A	<b>Ambient Max(°C):</b>	40
<b>Type:</b>	KS	<b>Alt Ambient Max(°C):</b>	--
<b>Frame:</b>	L404TP16	<b>Insulation Class:</b>	H
<b>Phases:</b>	3	<b>NEMA Design:</b>	B
<b>Poles:</b>	6	<b>Nominal Efficiency:</b>	94.5 %
<b>Output Power:</b>	60HP 44.4KW	<b>Guaranteed Efficiency:</b>	93.600 %
<b>RPM:</b>	1190	<b>3/4 Load Efficiency:</b>	--
<b>Voltage:</b>	460	<b>KVA Code:</b>	G
<b>Hertz:</b>	60	<b>Max KVAR:</b>	23.0
<b>Amps - FL:</b>	74.5	<b>Power Factor:</b>	80.5
<b>Service Factor:</b>	1.15	<b>Bearing - DE:</b>	6215C3
<b>Alt Service Factor:</b>	--	<b>Bearing - ODE:</b>	235A2532AA01

Enclosure is Weather Protected One

---

Stamped Nameplate Notes:

NEMA ENCLOSURE WP-I, CSA ENCL DP  
HTR LDS HE1-HE2 115V 100W  
ROT CCW FACING ODE LEAD/PH SEQ 1-2-3/1-2-3  
INVERTER DUTY PER NEMA MG1 PART 31  
ALTERNATE RATING FOR PWM CONTROL:1.0SF 40C AMBIENT  
VAR TORQUE RANGE 7.5-60 HZ  
UPPER BRG LUBE OIL: 6 QTS  
0 DEG C TO 40 DEG C : ISO 32(MINERAL OR SYNTHETIC)  
-15 DEG C TO 0 DEG C : ISO 32 SYNTHETIC  
SUITABLE FOR 50 HP, 380V 50HZ WITH  
87.2 AMPS AND 985 RPM AT 1.0 SF



**Additional Information:**

6P, VERT HOLLOW SHAFT HIGH THRUST (1D)  
SPECIAL BALANCE  
C/BOX 700 CU IN - 3.00" NPT  
OIL RESISTANT SLEEVING ON LEADS  
115V HTR LDS TO MAIN CONDUIT BOX  
BEARING LIFE 8760 HRS AT 7800 LB THRUST  
PART WINDING START  
CG:18.50 IN FROM P-BASE FACE, STAT DEF:0.0029 IN  
RCF:3240 CPM AT C/BOX SIDE, 3780 CPM AT  
90 DEG FROM C/ BOX SIDE  
NON-REVERSE BALL CARRIER,  
BOLTED COUPLING, BX = 1.501, KEY EW=0.375"



**Performance Characteristics**

1st Winding 1st Connection

**Design: 40BD3078A**

**Marks:**

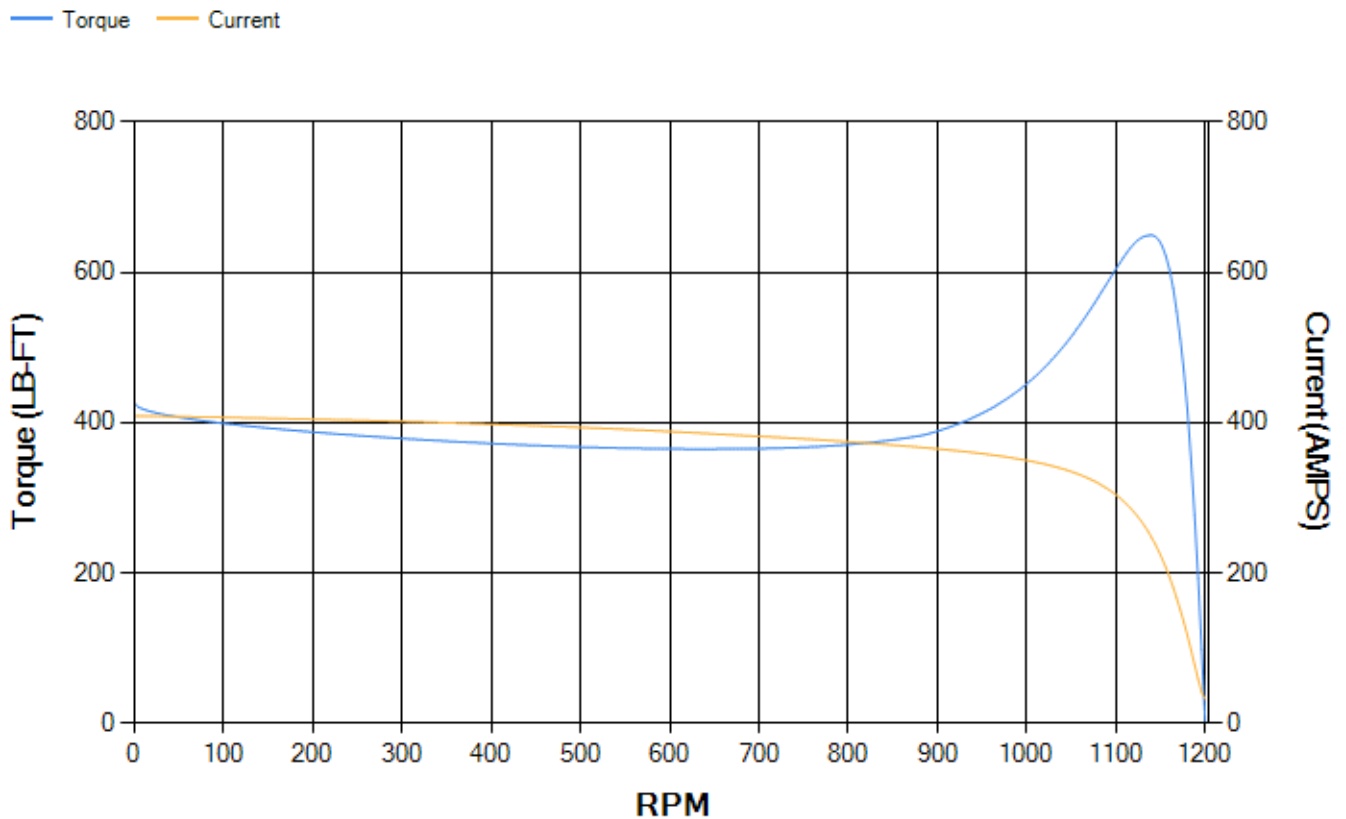
LOAD %	125.0	115.0	100.0	75.0	50.0	25.0	0.0
% EFF	93.31	93.56	94.05	94.01	93.36	89.86	0.00
% PF	82.43	81.81	80.28	75.31	64.66	42.49	4.12
AMPS	91.27	84.37	74.2	59.49	46.51	36.77	32.15

<b>TORQ(FL)#FT</b>	264.91	<b>TORQ(LR)%FL</b>	160.83	<b>TORQ(BD)%FL</b>	244.46
<b>AMPS(LR)</b>	409.12	<b>PF AT START</b>	0.35		

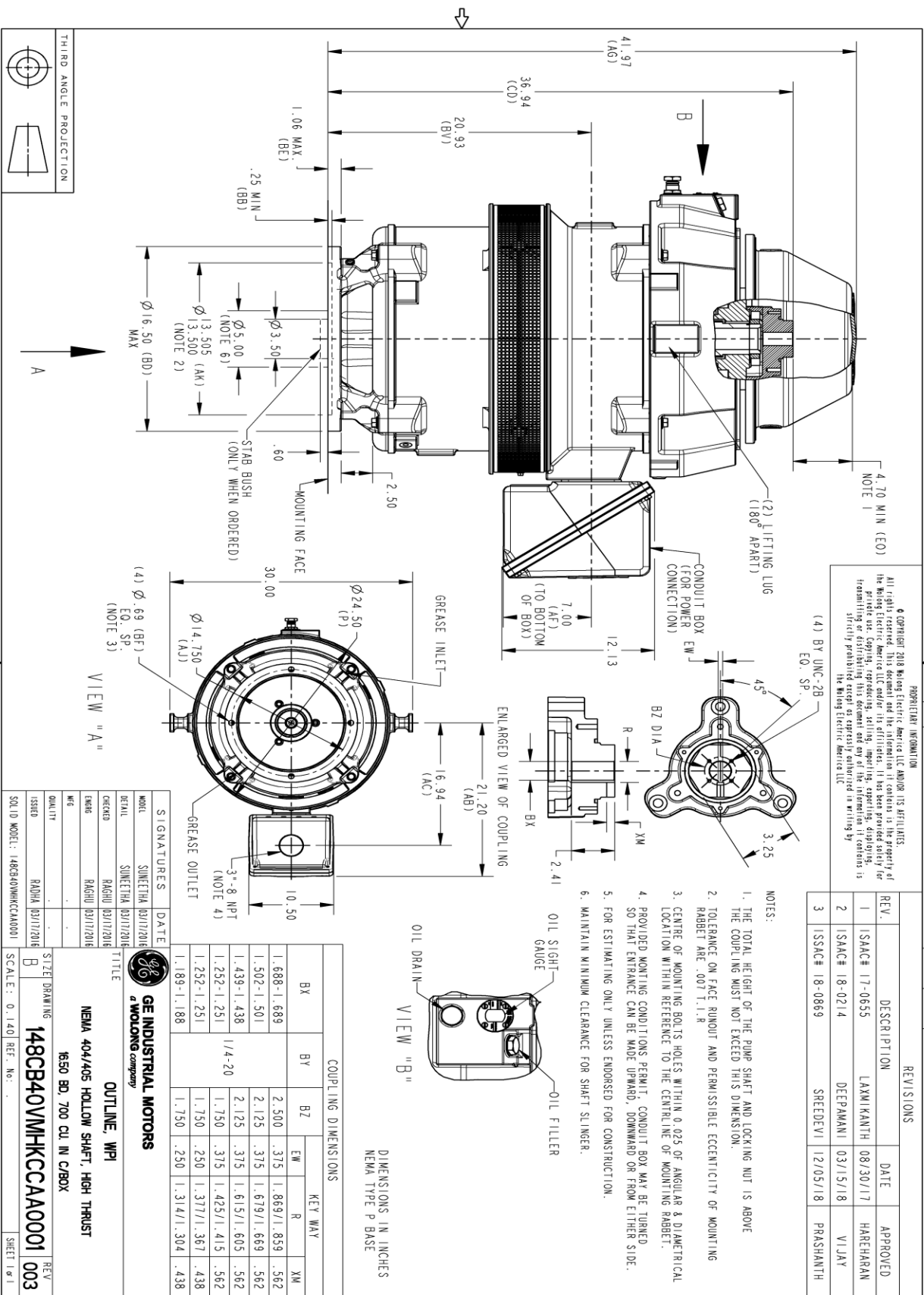
This motor is capable of two cold or one hot start with a maximum connected load inertia of 4766 Lb-Ft Sq (200.65 Kg-meter Sq)at 100% voltage, where the load torque varies with the square of the speed. Acceleration time with maximum inertia and the above load type is 58 seconds. Safe stall time at 100% voltage is 117 seconds cold, 84 seconds hot. Rotor inertia is 24.75 Lb-Ft Sq (1.04 Kg-meter Sq).

<b>Open Circuit A-C:</b>	0.637	<b>Short Circuit D-C:</b>	0.021
<b>Short Circuit A-C:</b>	0.043	<b>X/R Ratio:</b>	7.758
<b>Stator Slots:</b>	72	<b>Rotor Slots:</b>	58

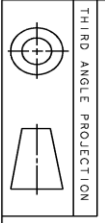
**Speed Torque Current Curve (First Connection, First Speed)**



Marks:



PROPRIETARY INFORMATION  
 All rights reserved. This document and the information it contains is the property of the Molog Electric America LLC and/or its affiliates. It has been provided solely for the use of the customer and is not to be distributed, copied, or otherwise used without the written consent of Molog Electric America LLC. Any unauthorized use or disclosure is strictly prohibited except as expressly authorized in writing by Molog Electric America LLC.



SIGNATURES	DATE
MOUL SUNEETHA 03/11/2016	
DETAIL SUNEETHA 03/11/2016	
CHECKER RAGHU 03/11/2016	
ENG RAGHU 03/11/2016	
QC	
QUALITY	
ISSUED RADHA 03/11/2016	
SOLID MODEL: 148CB40VMHKCCAA0001	

GE INDUSTRIAL MOTORS  
 a WOLONG company

OUTLINE, WPI  
 NEMA 404/405 HOLLOW SHAFT, HIGH THRUST  
 650 BD, 700 CU IN C/BOX

SCALE: 0.140 REF. NO. 148CB40VMHKCCAA0001

148CB40VMHKCCAA0001 003

REV SHEET 1 OF 1

REV	DESCRIPTION	DATE	APPROVED
1	ISAC# 17-0655	08/30/17	HAREHARAN
2	ISAC# 18-0214	03/15/18	VIJAY
3	ISSAC# 18-0869	12/05/18	PRAASHANTH

Marks:

**Connection Diagram**  
**GEM2034E-FIG19**



**Heater Connection**  
**3027JE-1C**



End shield Assembly		
Part Description	DE Side Part#	ODE Side Part#
End Shield	115E7306AC1	115E7310LJ1
Bearing	235A2513AL01	235A2532AA01
Slinger/Inproseal	235A2300HW1	

Fan & Fan Cover Assembly	
Part Description	Part#
Fan	
Fan Cover	161C1054AA1

Conduit & Accessories Box Assembly	
Part Description	Part#
Conduit Box	118D4408AD2

Mechanical Accessories	
Part Description	Part#
Brake	
Tachometer	

