



**GE INDUSTRIAL MOTORS**  
a **WOLONG** company

# Product Technical Information

July 17, 2020

Data shown is for the current revision model #. Ensure your nameplate model # matches.

<b>Model Number:</b>	<b>5KS405DAJ7008B</b>
<b>Catalog Number:</b>	<b>V4608</b>
<b>Instruction Manual:</b>	GEI-M1045
<b>Connection Diagram:</b>	GEM2034E-FIG19
<b>Outline Drawing:</b>	148CB40VMHKCCAA0001

## Accessory Connection Diagrams

<b>Bearing Thermocouple:</b>	None	<b>Heater:</b>	3027JE-1C
<b>RTD:</b>	None	<b>Thermistor:</b>	None
<b>Thermostat:</b>	None	<b>Winding Thermocouple:</b>	None
<b>Bearing RTD:</b>	None		

## Table of Contents

Specification	01
Performance Characteristics	02
Outline Drawing	03
Connection Drawing(s)	04
Spare parts	05

Marks:

<b>MODEL NUMBER:</b>	<b>5KS405DAJ7008B</b>	<b>Estimated Weight:</b>	1110 Lbs
<b>Outline Drawing:</b>	148CB40VMHKCCAA0001	<b>Time Rating:</b>	CONT
<b>Connection Diagram:</b>	GEM2034E-FIG19	<b>Enclosure:</b>	WPI
<b>Instruction Book:</b>	GEI-M1045	<b>Encl Construction:</b>	OPEN
<b>Design Code:</b>	40BD3076A	<b>Ambient Max(°C):</b>	40
<b>Type:</b>	KS	<b>Alt Ambient Max(°C):</b>	--
<b>Frame:</b>	L405TP16	<b>Insulation Class:</b>	H
<b>Phases:</b>	3	<b>NEMA Design:</b>	B
<b>Poles:</b>	6	<b>Nominal Efficiency:</b>	94.5 %
<b>Output Power:</b>	75HP 55.5KW	<b>Guaranteed Efficiency:</b>	93.600 %
<b>RPM:</b>	1190	<b>3/4 Load Efficiency:</b>	--
<b>Voltage:</b>	460	<b>KVA Code:</b>	G
<b>Hertz:</b>	60	<b>Max KVAR:</b>	28.8
<b>Amps - FL:</b>	93.2	<b>Power Factor:</b>	80.0
<b>Service Factor:</b>	1.15	<b>Bearing - DE:</b>	6215C3
<b>Alt Service Factor:</b>	--	<b>Bearing - ODE:</b>	235A2532AA01

Enclosure is Weather Protected One

---

Stamped Nameplate Notes:

NEMA ENCLOSURE WP-I, CSA ENCL DP  
HTR LDS HE1-HE2 115V 100W  
ROT CCW FACING ODE LEAD/PH SEQ 1-2-3/1-2-3  
INVERTER DUTY PER NEMA MG1 PART 31  
ALTERNATE RATING FOR PWM CONTROL:1.0SF 40C AMBIENT  
VAR TORQUE RANGE 7.5-60 HZ  
UPPER BRG LUBE OIL: 6 QTS  
0 DEG C TO 40 DEG C : ISO 32(MINERAL OR SYNTHETIC)  
-15 DEG C TO 0 DEG C : ISO 32 SYNTHETIC  
SUITABLE FOR 60 HP, 380V 50HZ WITH  
109 AMPS AND 985 RPM AT 1.0 SF



**Additional Information:**

6P, VERT HOLLOW SHAFT HIGH THRUST (1D)  
SPECIAL BALANCE  
C/BOX 700 CU IN - 3.00" NPT  
OIL RESISTANT SLEEVING ON LEADS  
115V HTR LDS TO MAIN CONDUIT BOX  
BEARING LIFE 8760 HRS AT 7800 LB THRUST  
PART WINDING START  
CG:18.50 IN FROM P-BASE FACE, STAT DEF:0.0029 IN  
RCF:3240 CPM AT C/BOX SIDE, 3780 CPM AT  
90 DEG FROM C/ BOX SIDE  
NON-REVERSE BALL CARRIER,  
BOLTED COUPLING, BX =1.501 ,KEY EW=0.375"



**Performance Characteristics**

1st Winding 1st Connection

**Design: 40BD3076A**

**Marks:**

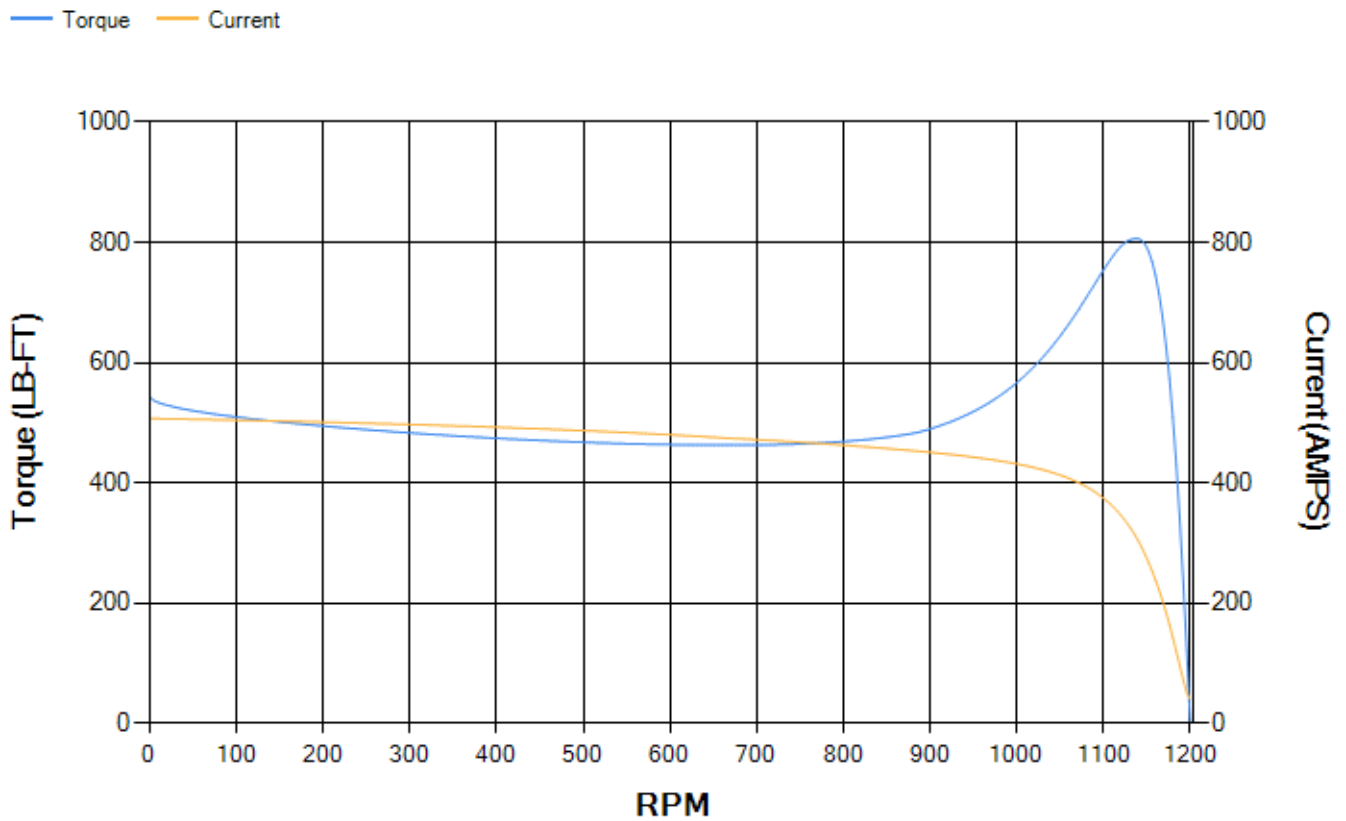
LOAD %	125.0	115.0	100.0	75.0	50.0	25.0	0.0
% EFF	93.34	93.62	94.16	94.2	93.69	90.52	0.00
% PF	82.22	81.63	80.13	75.19	64.53	42.26	3.76
AMPS	114.33	105.63	92.83	74.33	58.05	45.87	40.19

<b>TORQ(FL)#FT</b>	331.36	<b>TORQ(LR)%FL</b>	164.15	<b>TORQ(BD)%FL</b>	242.56
<b>AMPS(LR)</b>	506.9	<b>PF AT START</b>	0.35		

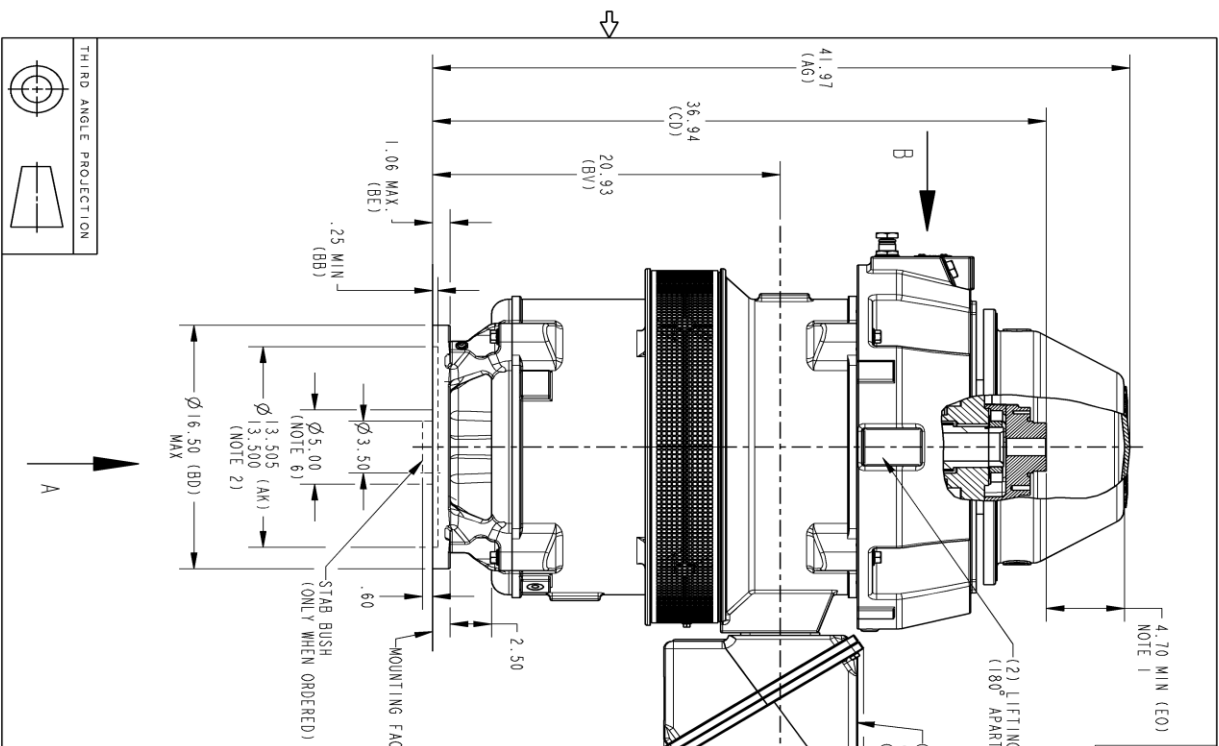
This motor is capable of two cold or one hot start with a maximum connected load inertia of 5112 Lb-Ft Sq (215.22 Kg-meter Sq)at 100% voltage, where the load torque varies with the square of the speed. Acceleration time with maximum inertia and the above load type is 49 seconds. Safe stall time at 100% voltage is 100 seconds cold, 66 seconds hot. Rotor inertia is 27.11 Lb-Ft Sq (1.14 Kg-meter Sq).

<b>Open Circuit A-C:</b>	0.594	<b>Short Circuit D-C:</b>	0.021
<b>Short Circuit A-C:</b>	0.041	<b>X/R Ratio:</b>	7.814
<b>Stator Slots:</b>	72	<b>Rotor Slots:</b>	58

**Speed Torque Current Curve (First Connection, First Speed)**

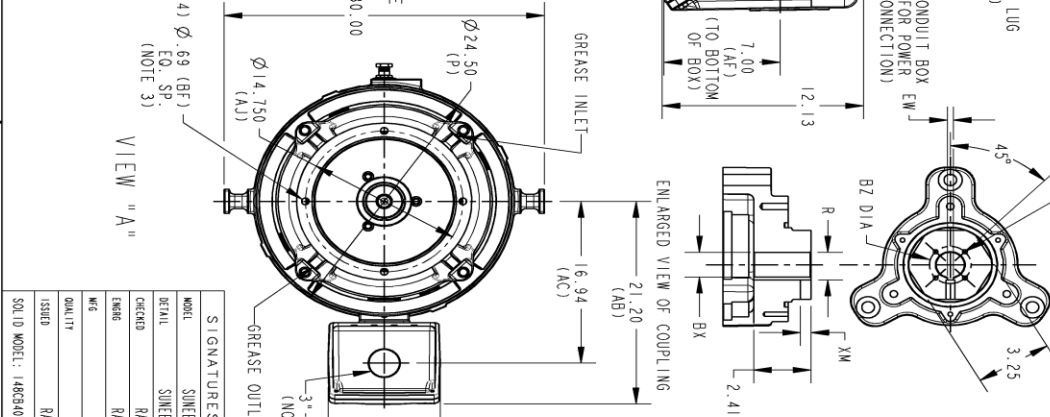


Marks:



PROPRIETARY INFORMATION  
 All rights reserved. This document and the information it contains is the property of the Molog Electric America LLC and/or its affiliates. It has been provided solely for the use of the customer and is not to be distributed, copied, or reproduced in any form without the express written consent of Molog Electric America LLC. Any other use is strictly prohibited except as expressly authorized in writing by the Molog Electric America LLC.

REV.		DESCRIPTION	DATE	APPROVED
1	ISAC# 17-0655	LAXMI KANTH	08/30/17	HAREHARAN
2	ISAC# 18-0214	DEEPMANI	03/15/18	VIJAY
3	ISSAC# 18-0869	SREEDevi	12/05/18	PRAASHANTH



SIGNATURES	DATE	GE INDUSTRIAL MOTORS a WOLONG company			
MOEL SUNEETHA	03/17/2016	BX	BY	BZ	KEY WAY
DETAIL SUNEETHA	03/17/2016	1.688-1.689	2.500	.375	1.869/1.859 .562
ORDER RAGHU	03/17/2016	1.502-1.501	2.125	.375	1.679/1.669 .562
ENG RAGHU	03/17/2016	1.439-1.438	2.125	.375	1.615/1.605 .562
QC		1.252-1.251	1.750	.250	1.425/1.415 .562
		1.252-1.251	1.750	.250	1.377/1.367 .438
		1.189-1.188	1.750	.250	1.314/1.304 .438

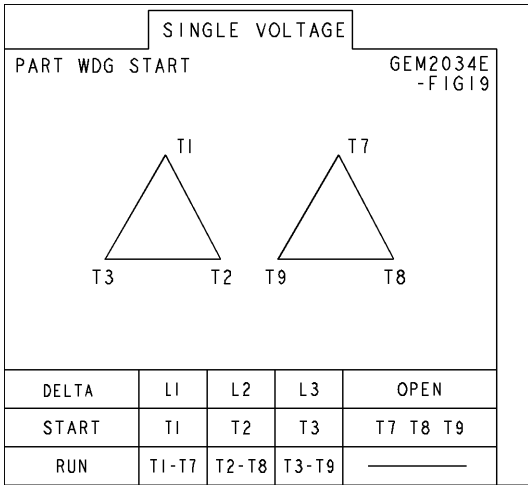
COUPLING DIMENSIONS				KEY WAY	
BX	BY	BZ	EW	R	XM
1.688-1.689	2.500	.375	1.869/1.859	.562	
1.502-1.501	2.125	.375	1.679/1.669	.562	
1.439-1.438	2.125	.375	1.615/1.605	.562	
1.252-1.251	1.750	.250	1.425/1.415	.562	
1.252-1.251	1.750	.250	1.377/1.367	.438	
1.189-1.188	1.750	.250	1.314/1.304	.438	

VIEW "A"  
 VIEW "B"  
 ENLARGED VIEW OF COUPLING  
 DIMENSIONS IN INCHES  
 NEMA TYPE P BASE

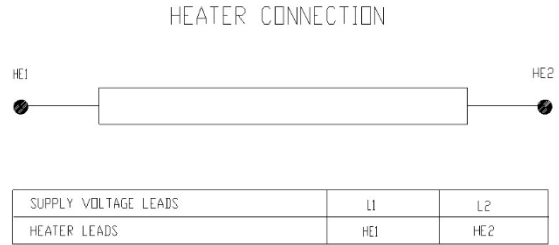
REVISIONS  
 SCALE: 0.140 REF. NO.:  
 NEMA 404/405 HOLLOW SHAFT, HIGH THRUST  
 650 BD, 700 CU IN C/BOX  
 148CB40VMHKCCAA0001 003

**Marks:**

**Connection Diagram**  
**GEM2034E-FIG19**



**Heater Connection**  
**3027JE-1C**



End shield Assembly		
Part Description	DE Side Part#	ODE Side Part#
End Shield	115E7306AC1	115E7310LJ1
Bearing	235A2513AL01	235A2532AA01
Slinger/Inproseal	235A2300HW1	

Fan & Fan Cover Assembly	
Part Description	Part#
Fan	
Fan Cover	161C1054AA1

Conduit & Accessories Box Assembly	
Part Description	Part#
Conduit Box	118D4408AD2

Mechanical Accessories	
Part Description	Part#
Brake	
Tachometer	

