



GE INDUSTRIAL MOTORS
a **WOLONG** company

Product Technical Information

May 29, 2021

Data shown is for the current revision model #. Ensure your nameplate model # matches.

Model Number:	5KS326SAJ6005D
Catalog Number:	V4712
Instruction Manual:	GEI-M1045
Connection Diagram:	GEM2034E-FIG9
Outline Drawing:	148CB32TMHKBCAA0001

Accessory Connection Diagrams

Bearing Thermocouple:	None	Heater:	3027JE-1C
RTD:	None	Thermistor:	None
Thermostat:	3027JE-2A	Winding Thermocouple:	None
Bearing RTD:	None		

Table of Contents

Specification	01
Performance Characteristics	02
Outline Drawing	03
Connection Drawing(s)	04
Spare parts	05

Marks:

MODEL NUMBER:	5KS326SAJ6005D	Estimated Weight:	1000 Lbs
Outline Drawing:	148CB32TMHKBCAA0001	Time Rating:	CONT
Connection Diagram:	GEM2034E-FIG9	Enclosure:	TEFC
Instruction Book:	GEI-M1045	Encl Construction:	X\$D
Design Code:	32BD1183AA	Ambient Max(°C):	40
Type:	KS	Alt Ambient Max(°C):	--
Frame:	L326TP16	Insulation Class:	H
Phases:	3	NEMA Design:	B
Poles:	4	Nominal Efficiency:	94.5 %
Output Power:	50HP 37KW	Guaranteed Efficiency:	93.6 %
RPM:	1780	3/4 Load Efficiency:	--
Voltage:	230/460	KVA Code:	G
Hertz:	60	Max KVAR:	17.7
Amps - FL:	122.0/61.0	Power Factor:	81.5
Service Factor:	1.15	Bearing - DE:	6212C3
Alt Service Factor:	--	Bearing - ODE:	235A2523AD01

Enclosure is Totally Enclosed Fan-Cooled

Stamped Nameplate Notes:

HTR LDS HE1-HE2 115V 100W
 ROT CCW FACING TOP LEAD/PH SEQ 1-2-3/1-2-3
 THERMOSTAT LEADS TB1-TB2 TRIP
 INVERTER DUTY PER NEMA MG1 PART 31
 ALTERNATE RATING FOR PWM CONTROL:1.0SF 40C AMBIENT
 VAR TORQUE RANGE 5 -60 HZ
 UPPER BRG LUBE OIL: 3.4 QTS
 0 DEG C TO 40 DEG C : ISO 32(MINERAL OR SYNTHETIC)
 -15 DEG C TO 0 DEG C : ISO 32 SYNTHETIC
 SUITABLE FOR 40 HP, 190/380V, 50 HZ WITH
 117.6/58.8 AMPS AND 1480 RPM AT 1.00 SF



Additional Information:

4P, VERT HOLLOW SHAFT HIGH THRUST (1D)
C/BOX 346 CU IN - 3.00" NPT
OIL RESISTANT SLEEVING ON LEADS
(3)N.C. CLASS F TRIP TSTAT LDS TO MAIN CONDUIT BOX
115V HTR LDS TO MAIN CONDUIT BOX
SHAFT GROUNDING RING MOUNTED ON LOWER END BRG CAP
BEARING LIFE 8760 HRS AT 6324 LB THRUST
CG:17.55 IN FROM P-BASE FACE, STAT DEF:0.0031 IN
RCF:3210 CPM AT C/BOX SIDE, 3510 CPM AT
90 DEG FROM C/ BOX SIDE
NON-REVERSE BALL CARRIER,
BOLTED COUPLING, BX = 1.251 IN, EW= 0.250 IN
SPECIAL BALANCE



Performance Characteristics

1st Winding 1st Connection

Design: 32BD1183AA

Marks:

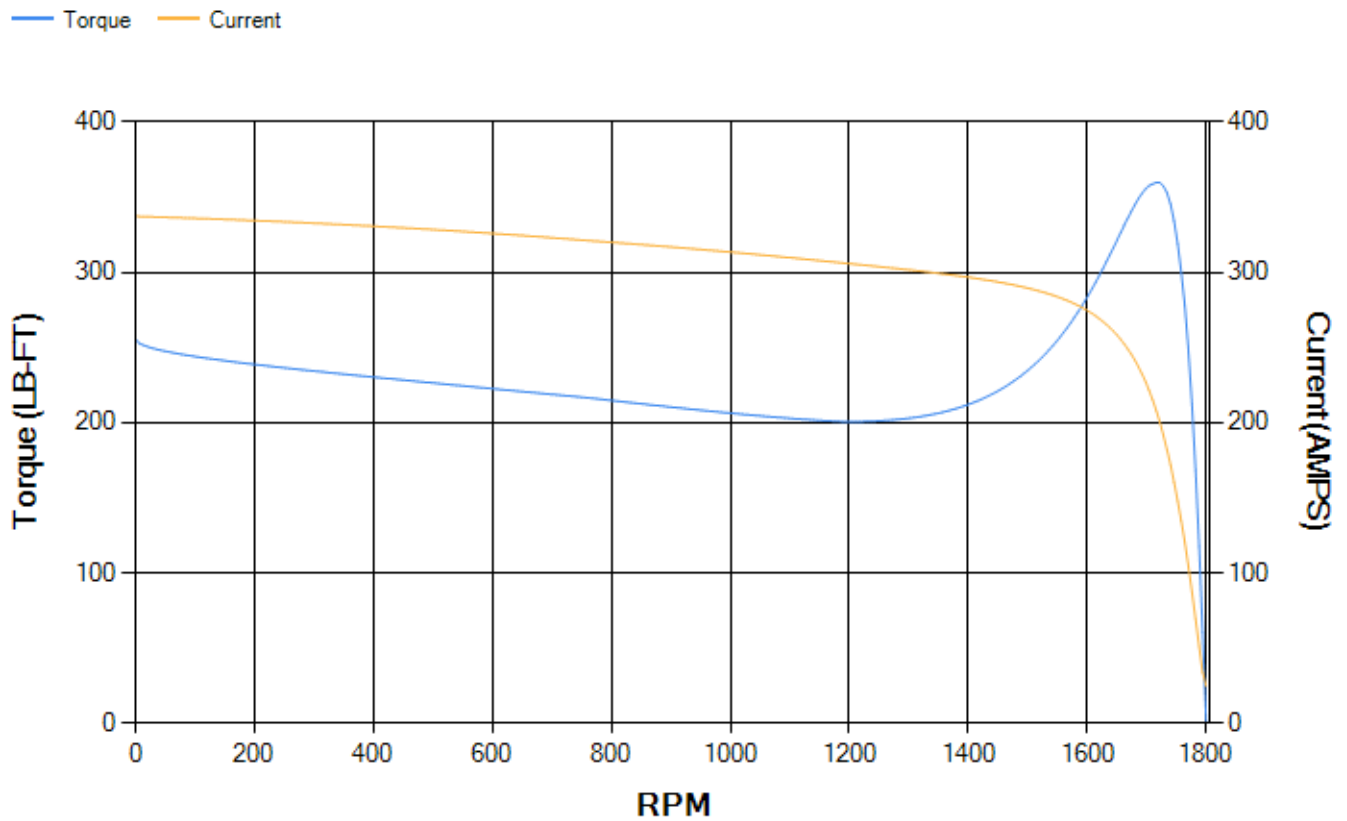
LOAD %	125.0	115.0	100.0	75.0	50.0	25.0	0.0
% EFF	93.4	93.67	94.18	94.17	93.58	90.24	0.00
% PF	83.05	82.59	81.33	76.93	66.99	44.98	4.25
AMPS	75.41	69.56	60.96	48.45	37.33	28.83	24.72

TORQ(FL)#FT	147.63	TORQ(LR)%FL	173.11	TORQ(BD)%FL	242.8
AMPS(LR)	337.38	PF AT START	0.34		

This motor is capable of two cold or one hot start with a maximum connected load inertia of 1075 Lb-Ft Sq (45.26 Kg-meter Sq)at 100% voltage, where the load torque varies with the square of the speed. Acceleration time with maximum inertia and the above load type is 34 seconds. Safe stall time at 100% voltage is 78 seconds cold, 41 seconds hot. Rotor inertia is 8.52 Lb-Ft Sq (0.36 Kg-meter Sq).

Open Circuit A-C:	0.514	Short Circuit D-C:	0.023
Short Circuit A-C:	0.031	X/R Ratio:	8.75
Stator Slots:	48	Rotor Slots:	38

Speed Torque Current Curve (First Connection, First Speed)

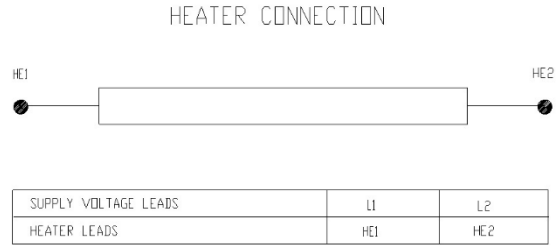


Marks:

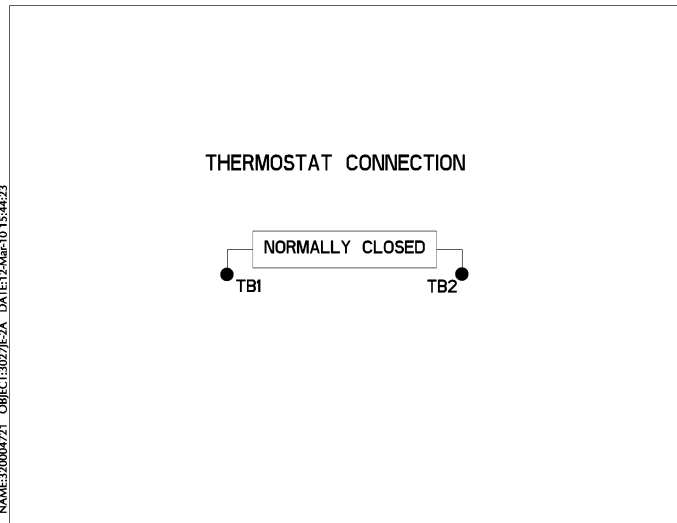
Connection Diagram
GEM2034E-FIG9



Heater Connection
3027JE-1C



Thermostat Connection
3027JE-2A



NAME: 302004721 - OBJECT: 3027JE-2A - DATE: 12-Mar-10 15:44:23



End shield Assembly		
Part Description	DE Side Part#	ODE Side Part#
End Shield	115E8205AA1	115E8208LA1
Bearing	235A2509BE01	235A2523AD01
Slinger/Inproseal	235A2300FM1	

Fan & Fan Cover Assembly	
Part Description	Part#
Fan	153B1888G02
Fan Cover	128D6846AA1

Conduit & Accessories Box Assembly	
Part Description	Part#
Conduit Box	149C4429AA2

Mechanical Accessories	
Part Description	Part#
Brake	
Tachometer	

