



GE INDUSTRIAL MOTORS
a **WOLONG** company

Product Technical Information

June 19, 2021

Data shown is for the current revision model #. Ensure your nameplate model # matches.

Model Number:	5KS364SAJ6008C
Catalog Number:	V4713
Instruction Manual:	GEI-M1045
Connection Diagram:	GEM2034E-FIG7
Outline Drawing:	148CB36TMHKBCAA0001

Accessory Connection Diagrams

Bearing Thermocouple:	None	Heater:	3027JE-1C
RTD:	None	Thermistor:	None
Thermostat:	3027JE-2A	Winding Thermocouple:	None
Bearing RTD:	None		

Table of Contents

Specification	01
Performance Characteristics	02
Outline Drawing	03
Connection Drawing(s)	04
Spare parts	05

Marks:

MODEL NUMBER:	5KS364SAJ6008C	Estimated Weight:	1070 Lbs
Outline Drawing:	148CB36TMHKBCAA0001	Time Rating:	CONT
Connection Diagram:	GEM2034E-FIG7	Enclosure:	TEFC
Instruction Book:	GEI-M1045	Encl Construction:	X\$D
Design Code:	36BD1188AA	Ambient Max(°C):	40
Type:	KS	Alt Ambient Max(°C):	--
Frame:	L364TP16	Insulation Class:	H
Phases:	3	NEMA Design:	B
Poles:	4	Nominal Efficiency:	95.0 %
Output Power:	60HP 44.4KW	Guaranteed Efficiency:	94.1 %
RPM:	1780	3/4 Load Efficiency:	--
Voltage:	460	KVA Code:	G
Hertz:	60	Max KVAR:	20.9
Amps - FL:	72.0	Power Factor:	82.5
Service Factor:	1.15	Bearing - DE:	6213C3
Alt Service Factor:	--	Bearing - ODE:	235A2523AD01

Enclosure is Totally Enclosed Fan-Cooled

Stamped Nameplate Notes:

HTR LDS HE1-HE2 115V 100W
 ROT CCW FACING TOP LEAD/PH SEQ 1-2-3/1-2-3
 THERMOSTAT LEADS TB1-TB2 TRIP
 INVERTER DUTY PER NEMA MG1 PART 31
 ALTERNATE RATING FOR PWM CONTROL:1.0SF 40C AMBIENT
 VAR TORQUE RANGE 5-60 HZ
 UPPER BRG LUBE OIL: 3.7 QTS
 0 DEG C TO 40 DEG C : ISO 32(MINERAL OR SYNTHETIC)
 -15 DEG C TO 0 DEG C : ISO 32 SYNTHETIC
 SUITABLE FOR 50 HP, 380V, 50 HZ WITH
 72.5 AMPS AND 1480 RPM AT 1.00 SF



Additional Information:

4P, VERT HOLLOW SHAFT HIGH THRUST (1D)
C/BOX 346 CU IN - 3.00" NPT
OIL RESISTANT SLEEVING ON LEADS
N.C. TRIP TSTAT LDS TO MAIN CONDUIT BOX
115V HTR LDS TO MAIN CONDUIT BOX
SHAFT GROUNDING RING MOUNTED ON LOWER END BRG CAP
BEARING LIFE 8760 HRS AT 6244 LB THRUST
CG:17.65 IN FROM P-BASE FACE, STAT DEF:0.0046 IN
RCF:2760 CPM AT C/BOX SIDE, 2760 CPM AT
90 DEG FROM C/ BOX SIDE
NON-REVERSE BALL CARRIER,
BOLTED COUPLING, BX = 1.251", EW = .250"
SPECIAL BALANCE



Performance Characteristics

1st Winding 1st Connection

Design: 36BD1188AA

Marks:

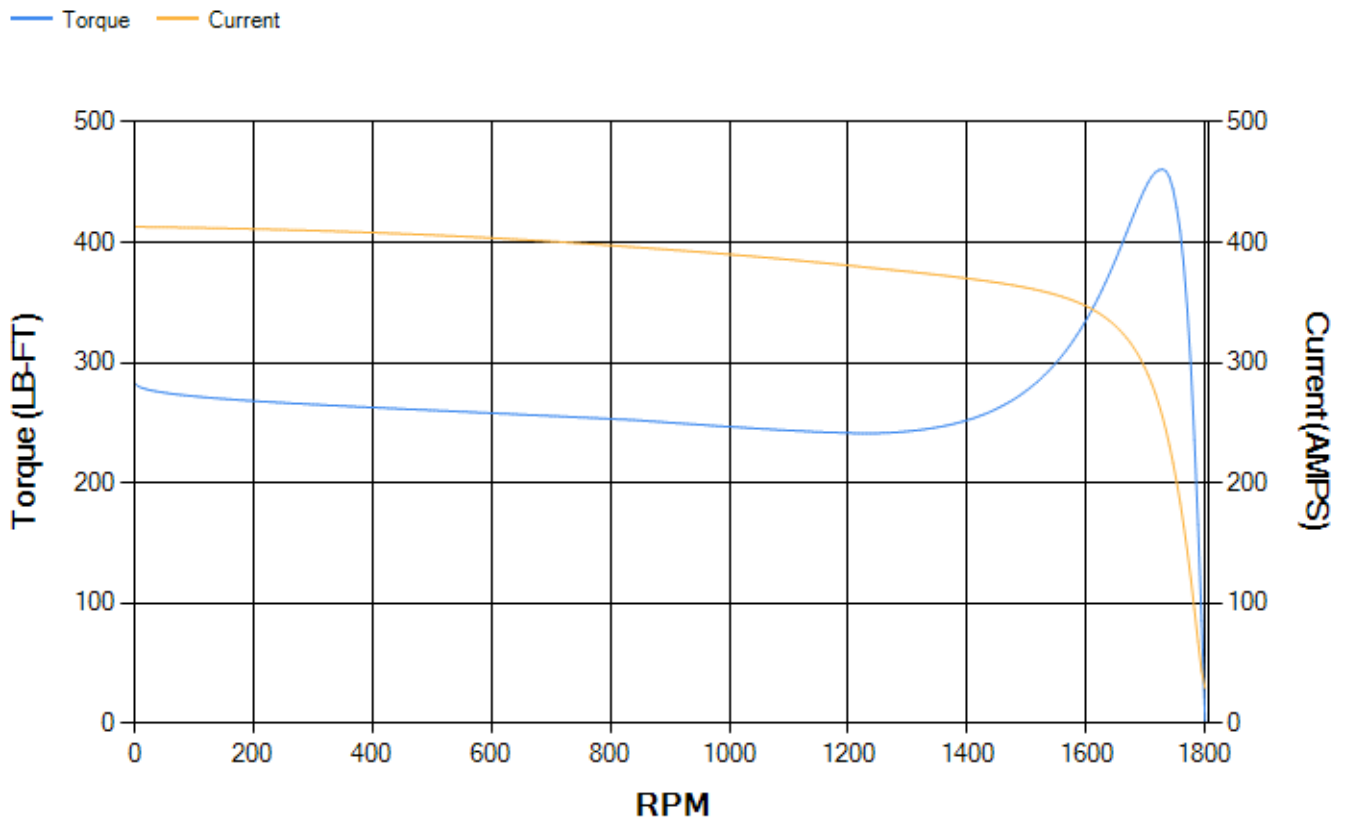
LOAD %	125.0	115.0	100.0	75.0	50.0	25.0	0.0
% EFF	94.08	94.3	94.76	94.71	94.15	91.08	0.00
% PF	84.34	83.78	82.4	77.84	67.73	45.34	3.86
AMPS	88.47	81.74	71.74	57.13	44.03	33.99	29.19

TORQ(FL)#FT	176.83	TORQ(LR)%FL	160.17	TORQ(BD)%FL	259.96
AMPS(LR)	412.91	PF AT START	0.31		

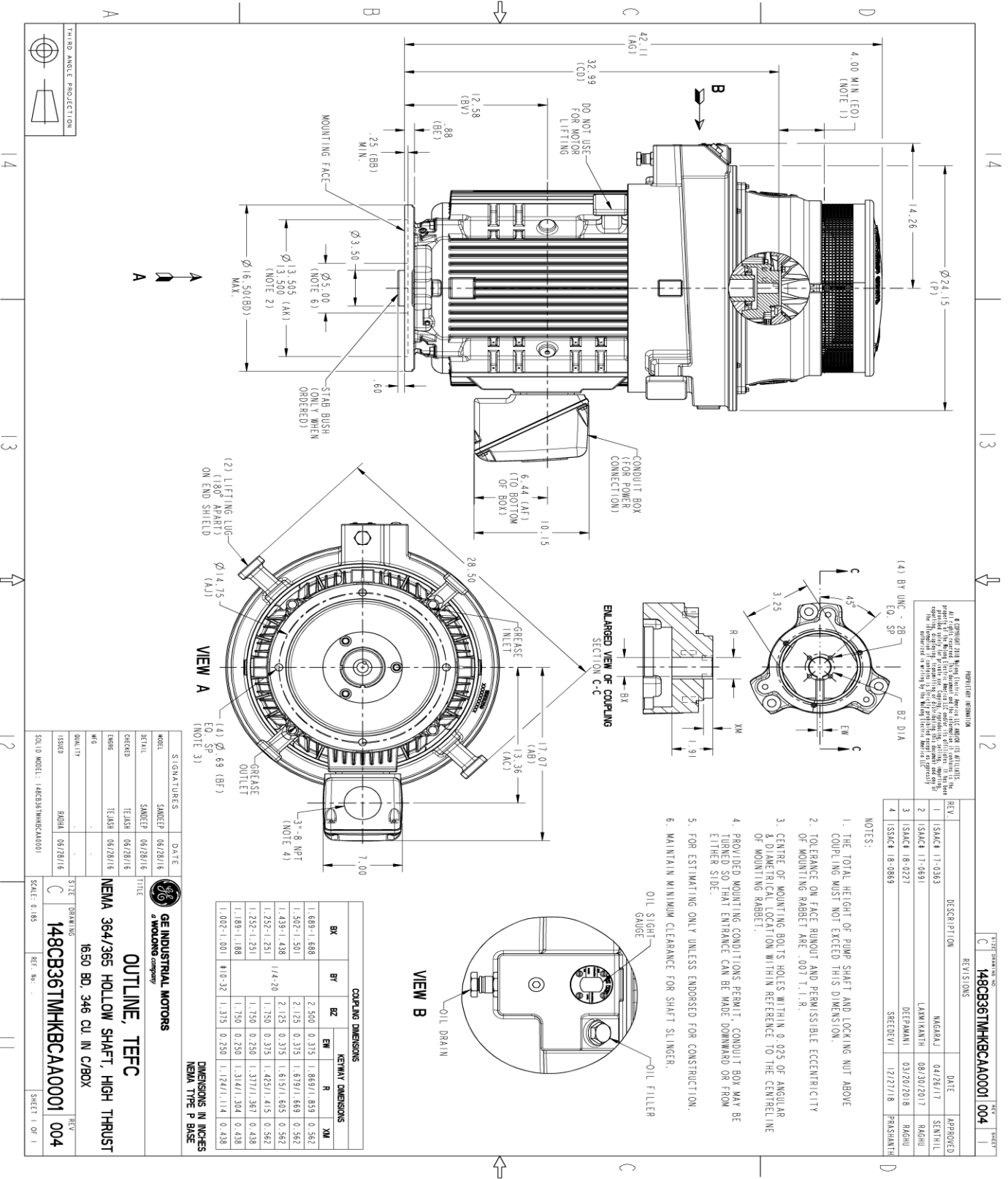
This motor is capable of two cold or one hot start with a maximum connected load inertia of 1181 Lb-Ft Sq (49.72 Kg-meter Sq)at 100% voltage, where the load torque varies with the square of the speed. Acceleration time with maximum inertia and the above load type is 32 seconds. Safe stall time at 100% voltage is 76 seconds cold, 39 seconds hot. Rotor inertia is 12.1 Lb-Ft Sq (0.51 Kg-meter Sq).

Open Circuit A-C:	0.6	Short Circuit D-C:	0.024
Short Circuit A-C:	0.035	X/R Ratio:	9.195
Stator Slots:	60	Rotor Slots:	50

Speed Torque Current Curve (First Connection, First Speed)



Marks:



REPRODUCTION INFORMATION
 A copyright 2018 by GE Industrial Motors, Inc. All rights reserved. This document is the property of GE Industrial Motors, Inc. and is intended for use only for the specific motor model and type indicated. No part of this document may be reproduced or transmitted in any form or by any means, electronic, mechanical, photocopying, recording, or by any information storage and retrieval system, without the prior written permission of GE Industrial Motors, Inc.

REV.	DESCRIPTION	DATE	APPROVED
1	ISSAC 17-0363	04/26/17	SENTHIL
2	ISSAC 17-0591	08/30/2017	RAGHU
3	ISSAC 18-0222	03/29/2018	RAGHU
4	ISSAC 18-0659	12/27/18	PRASANTH

NOTES:

1. THE TOTAL HEIGHT OF PUMP SHAFT AND LOCKING NUT ABOVE COUPLING MUST NOT EXCEED THIS DIMENSION.
2. TOLERANCE ON FACE RIMOUT AND PERMISSIBLE ECCENTRICITY OF MOUNTING RABBIT ARE .007 T.I.R.
3. CENTRE OF MOUNTING BOLTS HOLES WITHIN Ø 25 OF ANGULAR & DIAMETRICAL LOCATION WITHIN REFERENCE TO THE CENTRELINE OF MOUNTING RABBIT.
4. PROVIDED MOUNTING CONDITIONS PERMIT, CONDUIT BOX MAY BE TURNED SO THAT ENTRANCE CAN BE MADE DOWNWARD OR FROW EITHER SIDE.
5. FOR ESTIMATING ONLY UNLESS ENDORSED FOR CONSTRUCTION.
6. MAINTAIN MINIMUM CLEARANCE FOR SHAFT SLINGER.

COUPLING DIMENSIONS

KEYWAY DIMENSIONS		KEYWAY DIMENSIONS	
BX	BY	BZ	EW
1.689/1.688	2.500	0.375	1.869/1.859
1.502/1.501	2.125	0.375	1.679/1.669
1.439/1.438	2.125	0.375	1.671/1.661
1.252/1.251	1.750	0.375	1.425/1.415
1.252/1.251	1.750	0.250	1.371/1.367
1.189/1.188	1.750	0.250	1.314/1.304
1.002/1.001	1.100	0.250	1.124/1.114

DIMENSIONS IN INCHES
 NEMA TYPE P BASE



GE INDUSTRIAL MOTORS
 a WOLKONG company

OUTLINE, TEFC

NEMA 364/365 HOLLOW SHAFT, HIGH THRUST
 1650 BD, 346 CU IN C/BOX

MODEL	SIGNED	DATE
148CB36TMHKBCAA0001	SMOKEP	06/28/16
	ROTHAL	06/28/16
	CHECKED	06/28/16
	DESIGN	06/28/16
	TECHN	06/28/16
	WFS	
	QUALITY	
	ISSUED	06/28/16
	RAJHA	06/28/16

SCALE: 0.185
 REF. NO.:
 SHEET 1 OF 1

Marks:

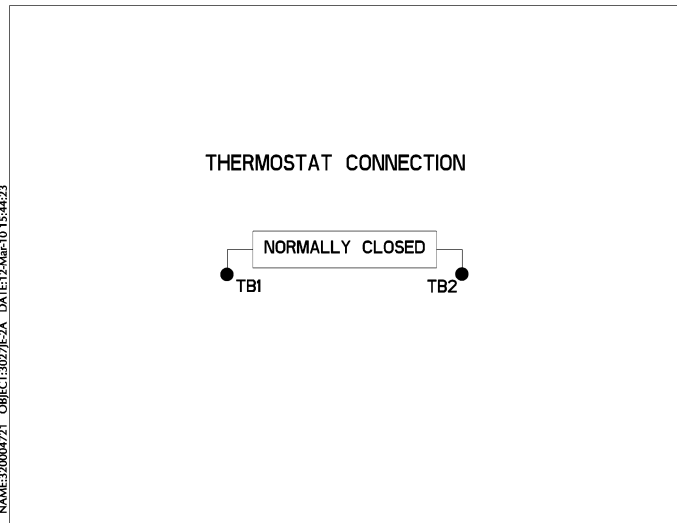
Connection Diagram
GEM2034E-FIG7



Heater Connection
3027JE-1C



Thermostat Connection
3027JE-2A



NAME:320004721 OBJECT:3027JE-2A DATE:12-Mar-10 15:44:23



End shield Assembly		
Part Description	DE Side Part#	ODE Side Part#
End Shield	115E8258AA1	115E8259LA1
Bearing	235A2517AA01	235A2523AD01
Slinger/Inproseal	235A2300FM1	

Fan & Fan Cover Assembly	
Part Description	Part#
Fan	153B1888G02
Fan Cover	128D6844AA1

Conduit & Accessories Box Assembly	
Part Description	Part#
Conduit Box	149C4429AA2

Mechanical Accessories	
Part Description	Part#
Brake	
Tachometer	

