



GE INDUSTRIAL MOTORS
a **WOLONG** company

Product Technical Information

June 19, 2021

Data shown is for the current revision model #. Ensure your nameplate model # matches.

Model Number:	5KS405SAJ6008C
Catalog Number:	V4715
Instruction Manual:	GEI-M1045
Connection Diagram:	GEM2034E-FIG7
Outline Drawing:	148CB40TMHKCCAA0001

Accessory Connection Diagrams

Bearing Thermocouple:	None	Heater:	3027JE-1C
RTD:	None	Thermistor:	None
Thermostat:	3027JE-2A	Winding Thermocouple:	None
Bearing RTD:	None		

Table of Contents

Specification	01
Performance Characteristics	02
Outline Drawing	03
Connection Drawing(s)	04
Spare parts	05

Marks:

MODEL NUMBER:	5KS405SAJ6008C	Estimated Weight:	1600 Lbs
Outline Drawing:	148CB40TMHKCCAA0001	Time Rating:	CONT
Connection Diagram:	GEM2034E-FIG7	Enclosure:	TEFC
Instruction Book:	GEI-M1045	Encl Construction:	X\$D
Design Code:	40BD1173A	Ambient Max(°C):	40
Type:	KS	Alt Ambient Max(°C):	--
Frame:	L405TP16	Insulation Class:	H
Phases:	3	NEMA Design:	B
Poles:	4	Nominal Efficiency:	95.4 %
Output Power:	100HP 74KW	Guaranteed Efficiency:	94.5 %
RPM:	1785	3/4 Load Efficiency:	--
Voltage:	460	KVA Code:	G
Hertz:	60	Max KVAR:	32.3
Amps - FL:	117.0	Power Factor:	84.5
Service Factor:	1.15	Bearing - DE:	6215C3
Alt Service Factor:	--	Bearing - ODE:	235A2532AA01

Enclosure is Totally Enclosed Fan-Cooled

Stamped Nameplate Notes:

HTR LDS HE1-HE2 115V 100W
 ROT CCW FACING ODE LEAD/PH SEQ 1-2-3/1-2-3
 THERMOSTAT LEADS TB1-TB2 TRIP
 INVERTER DUTY PER NEMA MG1 PART 31
 ALTERNATE RATING FOR PWM CONTROL:1.0SF 40C AMBIENT
 VAR TORQUE RANGE 5 -60 HZ
 UPPER BRG LUBE OIL: 6.3 QTS
 0 DEG C TO 40 DEG C : ISO 32(MINERAL OR SYNTHETIC)
 -15 DEG C TO 0 DEG C : ISO 32 SYNTHETIC
 SUITABLE FOR 75 HP, 380V, 50 HZ WITH
 107.0 AMPS AND 1485 RPM AT 1.00 SF



Additional Information:

4P, VERT HOLLOW SHAFT HIGH THRUST (1D)
C/BOX 700 CU IN - 3.00" NPT
OIL RESISTANT SLEEVING ON LEADS
N.C. TRIP TSTAT LDS TO MAIN CONDUIT BOX
115V HTR LDS TO MAIN CONDUIT BOX
SHAFT GROUNDING RING MOUNTED ON DE BRG CAP
BEARING LIFE 8760 HRS AT 7359 LB THRUST
CG:21.64 IN FROM P-BASE FACE, STAT DEF:0.0102 IN
RCF:1860 CPM AT C/BOX SIDE, 1860 CPM AT
90 DEG FROM C/ BOX SIDE
NON-REVERSE BALL CARRIER,
BOLTED COUPLING, BX = 1.501, EW = 0.375



Performance Characteristics

1st Winding 1st Connection

Design: 40BD1173A

Marks:

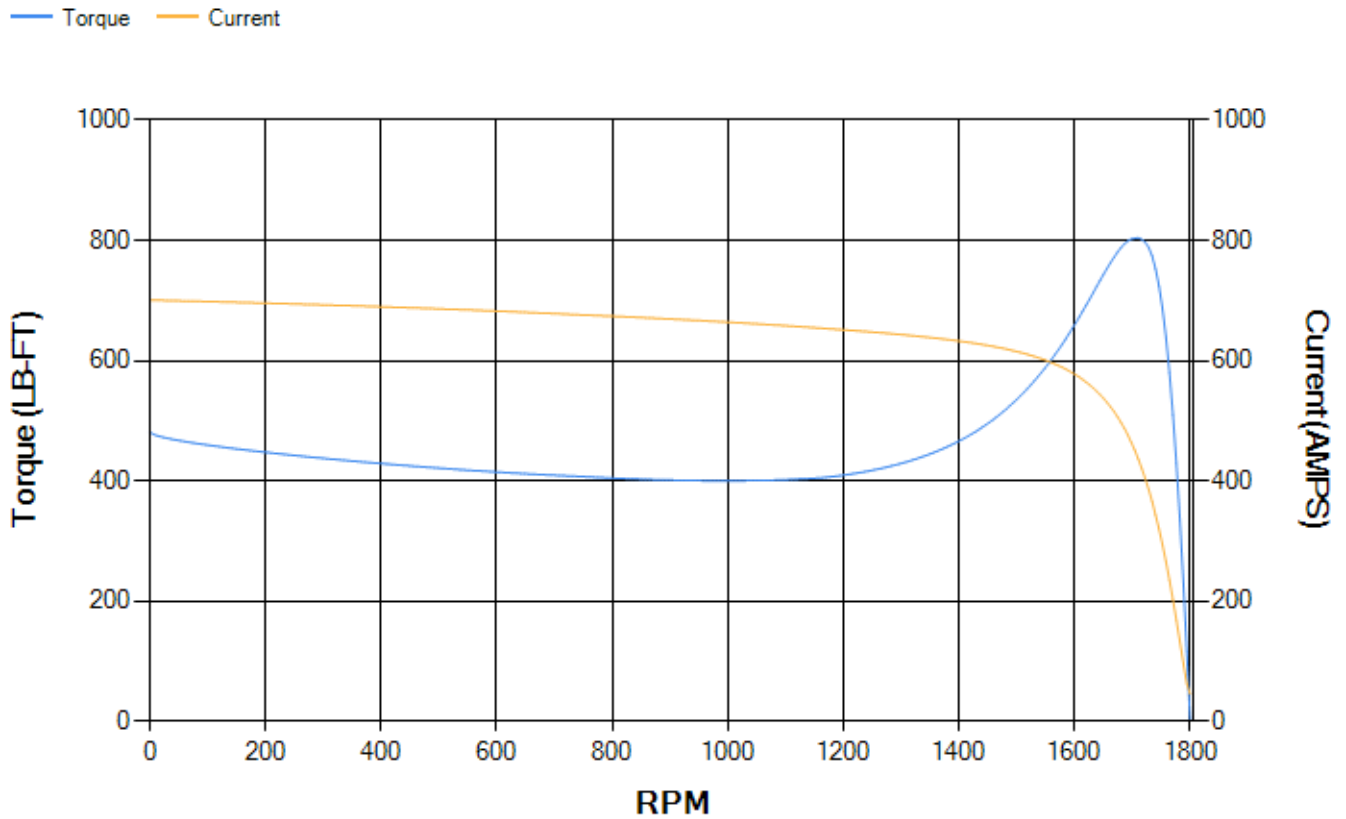
LOAD %	125.0	115.0	100.0	75.0	50.0	25.0	0.0
% EFF	94.46	94.63	95.03	94.87	94.22	91.02	0.00
% PF	86.21	85.69	84.4	80.15	70.55	48.29	4.47
AMPS	143.66	132.74	116.7	92.31	70.41	53.24	45.1

TORQ(FL)#FT	294.5	TORQ(LR)%FL	163.65	TORQ(BD)%FL	272.38
AMPS(LR)	700.67	PF AT START	0.31		

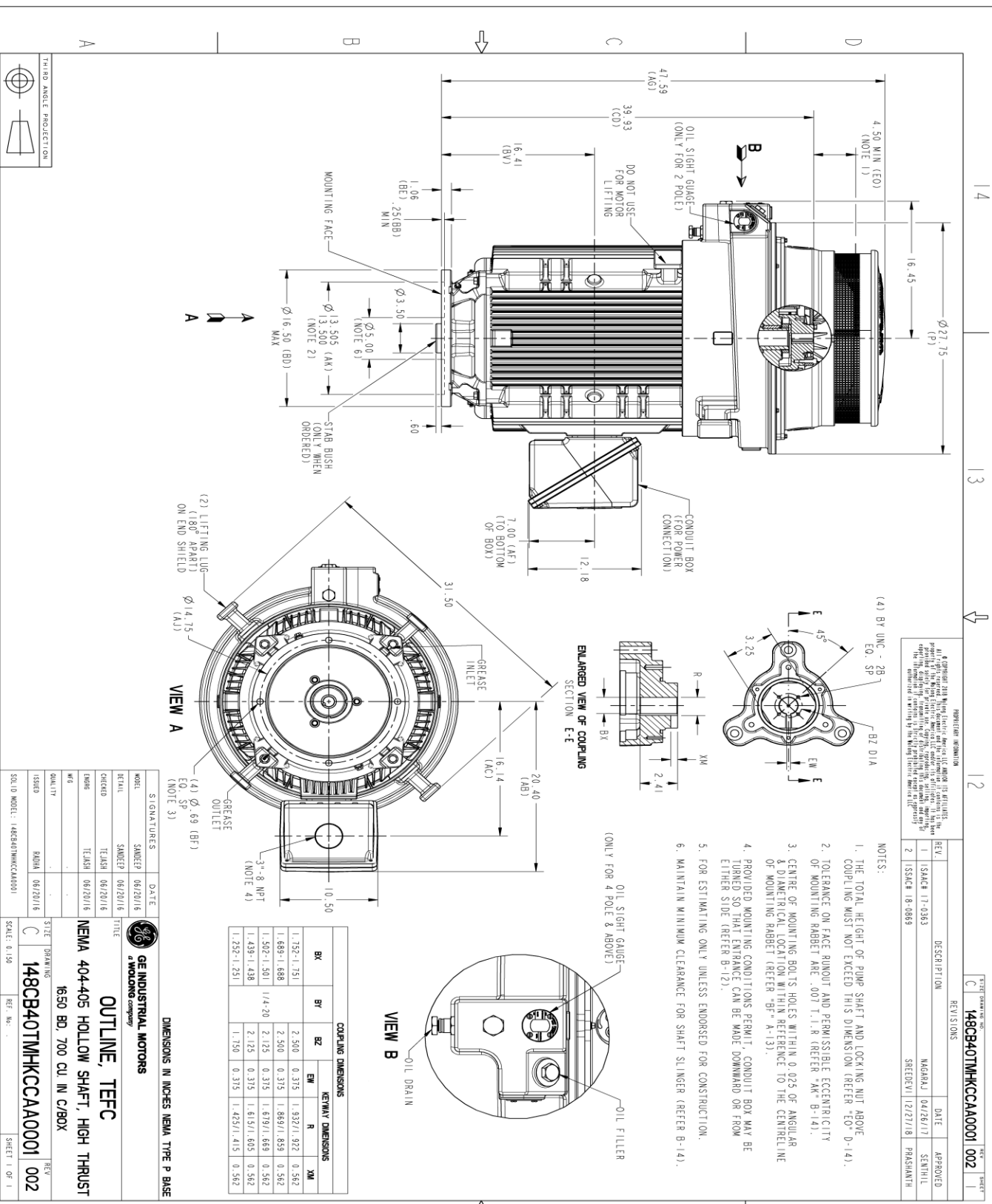
This motor is capable of two cold or one hot start with a maximum connected load inertia of 2156 Lb-Ft Sq (90.77 Kg-meter Sq)at 100% voltage, where the load torque varies with the square of the speed. Acceleration time with maximum inertia and the above load type is 35 seconds. Safe stall time at 100% voltage is 81 seconds cold, 41 seconds hot. Rotor inertia is 25.52 Lb-Ft Sq (1.07 Kg-meter Sq).

Open Circuit A-C:	0.682	Short Circuit D-C:	0.026
Short Circuit A-C:	0.04	X/R Ratio:	9.662
Stator Slots:	72	Rotor Slots:	58

Speed Torque Current Curve (First Connection, First Speed)



Marks:



REV.	DESCRIPTION	DATE	APPROVED
1	ISSUE	04/26/17	SANTHIL
2	ISSUE	12/27/18	PRAHMANH

148CB40TMHKCCA0001 002
 SHEET 1 OF 1

GE INDUSTRIAL MOTORS
 a WOLSKEL company
OUTLINE, TEFC
 NEMA 404-405 HOLLOW SHAFT, HIGH THRUST
 1650 BD, 700 CU IN C/BOX

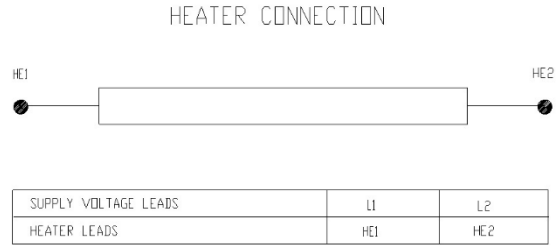
MODEL: 5KS405SAJ6008C
 CHECKED: TEJSH 06/20/16
 DATE: 06/22/16
 SIZE: DRAWING
 SCALE: 0.150
 SHEET 1 OF 1

Marks:

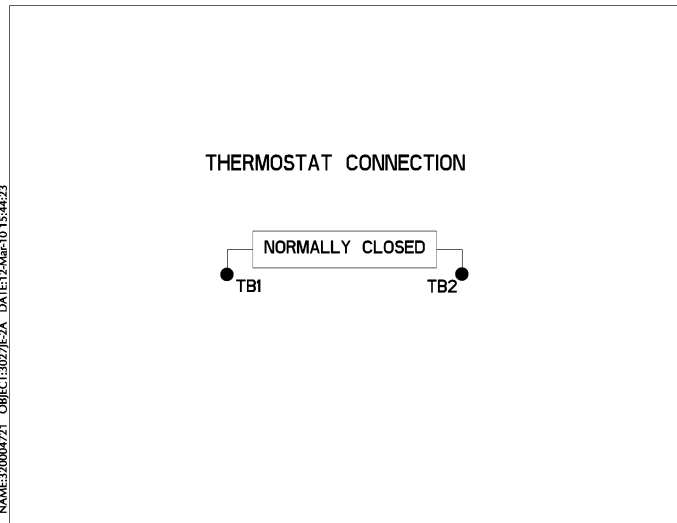
Connection Diagram
GEM2034E-FIG7



Heater Connection
3027JE-1C



Thermostat Connection
3027JE-2A



NAME:320004721 - OBJECT:3027JE-2A - DATE:12-Mar-10 15:44:23



End shield Assembly		
Part Description	DE Side Part#	ODE Side Part#
End Shield	115E8306AA1	115E8310LA1
Bearing	235A2513AL01	235A2532AA01
Slinger/Inproseal	235A2300HW1	

Fan & Fan Cover Assembly	
Part Description	Part#
Fan	153B1889G02
Fan Cover	128D6845AA1

Conduit & Accessories Box Assembly	
Part Description	Part#
Conduit Box	118D4408AD2

Mechanical Accessories	
Part Description	Part#
Brake	
Tachometer	

