



GE INDUSTRIAL MOTORS
a **WOLONG** company

Product Technical Information

July 14, 2020

Data shown is for the current revision model #. Ensure your nameplate model # matches.

Model Number:	5KS447SAJ6008B
Catalog Number:	V4718
Instruction Manual:	GEI-M1045
Connection Diagram:	GEM2034E-FIG7
Outline Drawing:	148CB49TMHKCCAA0001

Accessory Connection Diagrams

Bearing Thermocouple:	None	Heater:	3027JE-1C
RTD:	None	Thermistor:	None
Thermostat:	3027JE-2A	Winding Thermocouple:	None
Bearing RTD:	None		

Table of Contents

Specification	01
Performance Characteristics	02
Outline Drawing	03
Connection Drawing(s)	04
Spare parts	05

Marks:

MODEL NUMBER:	5KS447SAJ6008B	Estimated Weight:	3220 Lbs
Outline Drawing:	148CB49TMHKCCAA0001	Time Rating:	CONT
Connection Diagram:	GEM2034E-FIG7	Enclosure:	TEFC
Instruction Book:	GEI-M1045	Encl Construction:	X\$D
Design Code:	49BD1177AC	Ambient Max(°C):	40
Type:	KS	Alt Ambient Max(°C):	--
Frame:	L447TP16	Insulation Class:	H
Phases:	3	NEMA Design:	B
Poles:	4	Nominal Efficiency:	96.2 %
Output Power:	200HP 148KW	Guaranteed Efficiency:	95.4 %
RPM:	1790	3/4 Load Efficiency:	--
Voltage:	460	KVA Code:	G
Hertz:	60	Max KVAR:	43.5
Amps - FL:	220.0	Power Factor:	89.0
Service Factor:	1.15	Bearing - DE:	6217C3
Alt Service Factor:	--	Bearing - ODE:	235A2536AB01

Enclosure is Totally Enclosed Fan-Cooled

Stamped Nameplate Notes:

HTR LDS HE1-HE2 115V 145W
 ROT CCW FACING TOP LEAD/PH SEQ 1-2-3/1-2-3
 THERMOSTAT LEADS TB1-TB2 TRIP
 INVERTER DUTY PER NEMA MG1 PART 31
 ALTERNATE RATING FOR PWM CONTROL:1.0SF 40C AMBIENT
 VAR TORQUE RANGE 5-60 HZ
 UPPER BRG LUBE OIL: 17 QTS
 0 DEG C TO 40 DEG C : ISO 32(MINERAL OR SYNTHETIC)
 -15 DEG C TO 0 DEG C : ISO 32 SYNTHETIC
 SUITABLE FOR 150 HP, 380V, 50 HZ WITH
 200.0 AMPS AND 1490 RPM AT 1.00 SF



Additional Information:

4P, VERT HOLLOW SHAFT HIGH THRUST (1D)
C/BOX 700 CU IN - 3.00" NPT
OIL RESISTANT SLEEVING ON LEADS
N.C. TRIP TSTAT LDS TO MAIN CONDUIT BOX
115V HTR LDS TO MAIN CONDUIT BOX
INSULATED UPPER BEARING CARRIER
SHAFT GROUNDING RING MOUNTED ON LOWER END BRG CAP
BEARING LIFE 8760 HRS AT 14188 LB THRUST
CG:26.90 IN FROM P-BASE FACE, STAT DEF:= 0.008 IN
RCF: 2121 CPM (+/- 10%)
NON-REVERSE BALL CARRIER,
BOLTED COUPLING, BX = 1.688", EW = .375"



Performance Characteristics

1st Winding 1st Connection

Design: 49BD1177AC

Marks:

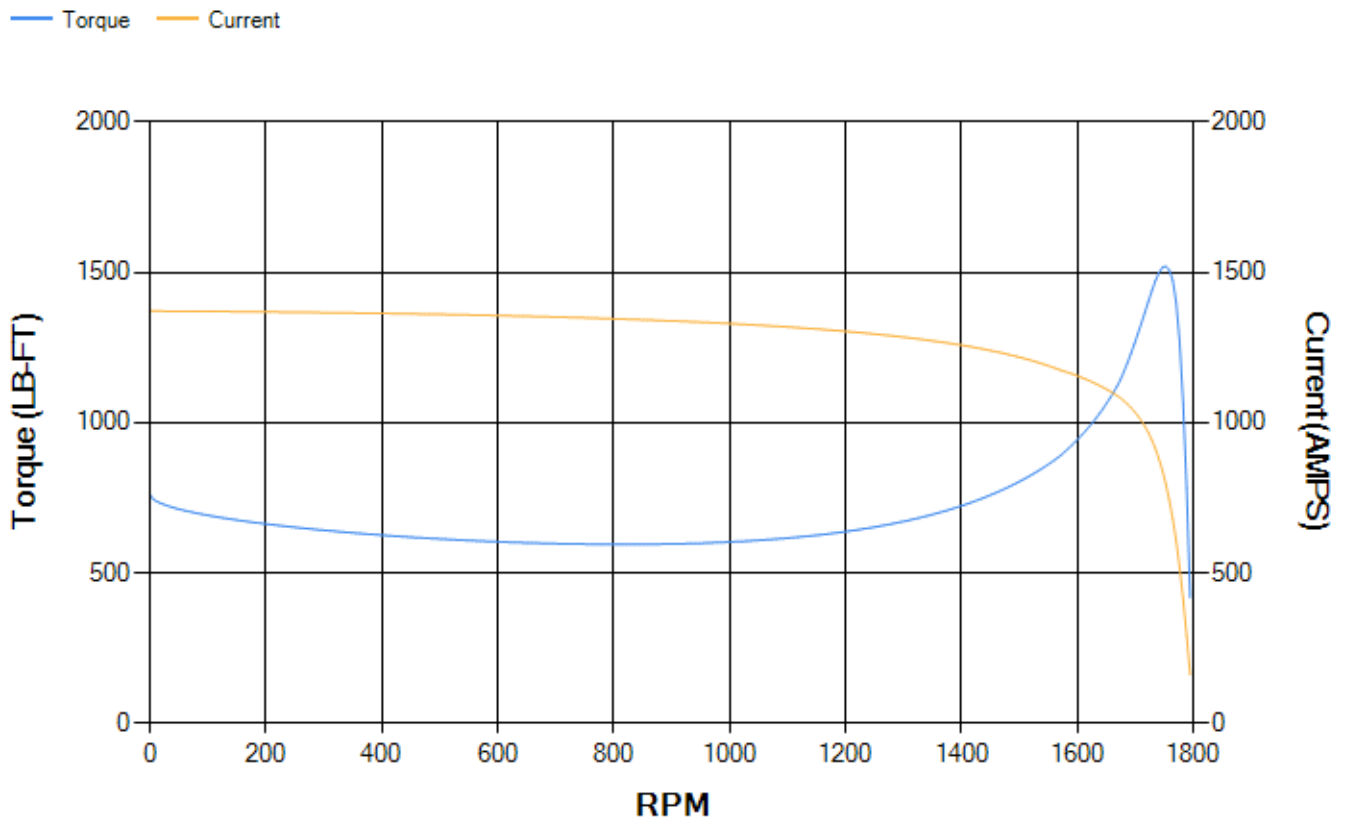
LOAD %	125.0	115.0	100.0	75.0	50.0	25.0	0.0
% EFF	95.24	95.46	95.93	95.98	95.74	93.74	0.00
% PF	89.2	89.17	88.78	86.69	80.54	61.32	4.37
AMPS	275.42	252.9	219.81	168.74	121.39	81.42	60.67

TORQ(FL)#FT	586.57	TORQ(LR)%FL	130.07	TORQ(BD)%FL	259.1
AMPS(LR)	1371.64	PF AT START	0.25		

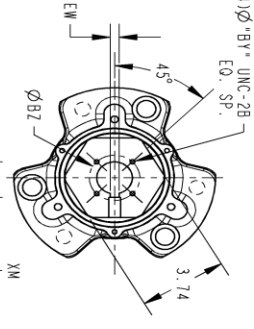
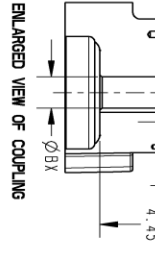
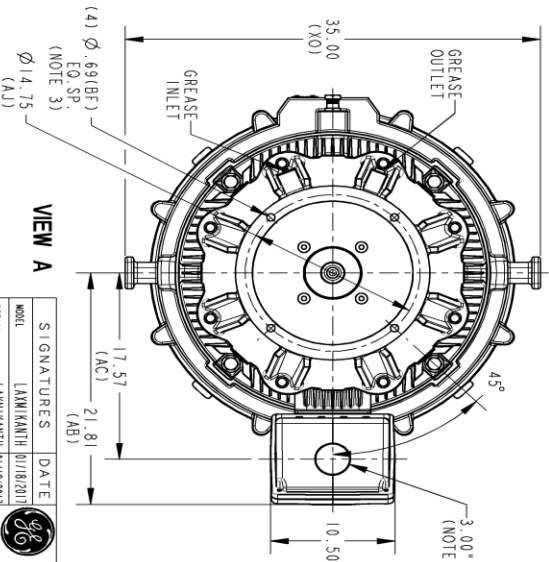
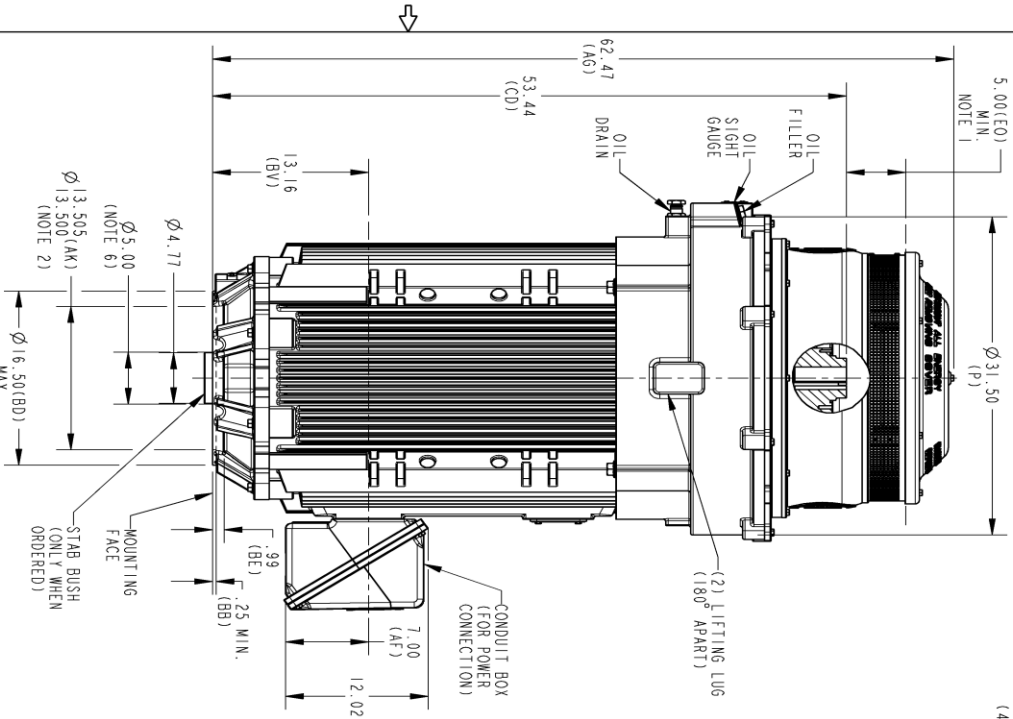
This motor is capable of two cold or one hot start with a maximum connected load inertia of 4664 Lb-Ft Sq (196.35 Kg-meter Sq)at 100% voltage, where the load torque varies with the square of the speed. Acceleration time with maximum inertia and the above load type is 54 seconds. Safe stall time at 100% voltage is 163 seconds cold, 83 seconds hot. Rotor inertia is 105.05 Lb-Ft Sq (4.42 Kg-meter Sq).

Open Circuit A-C:	1.744	Short Circuit D-C:	0.027
Short Circuit A-C:	0.069	X/R Ratio:	10.237
Stator Slots:	72	Rotor Slots:	58

Speed Torque Current Curve (First Connection, First Speed)



Marks:



(4) Ø "BY" = UNC-2B EO, SP.

(4) Ø "BY" = UNC-2B EO, SP.

- NOTES:
1. THE TOTAL HEIGHT OF PUMP SHAFT AND LOCKING NUT ABOVE COUPLING MUST NOT EXCEED THIS DIMENSION.
 2. TOLERANCE ON FACE RUNOUT AND PERMISSIBLE ECCENTRICITY OF MOUNTING RABBET ARE .007 T.1.R
 3. CENTRE OF MOUNTING BOLTS HOLES WITHIN 0.025 OF ANGULAR & DIAMETRICAL LOCATION WITHIN REFERENCE TO THE CENTRAL LINE OF MOUNTING RABBET.
 4. PROVIDED MOUNTING CONDITIONS PERMIT, CONDUIT BOX MAY BE TURNED SO THAT ENTRANCE CAN BE MADE UPWARD, DOWNWARD OR FROM EITHER SIDE.
 5. FOR ESTIMATING ONLY UNLESS ENDORSED FOR CONSTRUCTION.
 6. MAINTAIN MINIMUM CLEARANCE FOR SHAFT SLINGER.

DIMENSIONS IN INCHES
NEMA TYPE P BASE

COUPLING DIMENSIONS

BX	BY	BZ	KEY WAY			
			EW	R	XM	
1.501	1/4-20	2.125	.375	1.669	.562	
1.688	1/4-20	2.500	.375	1.859	.562	
1.751	1/4-20	2.500	.375	1.922	.562	
1.813	1/4-20	2.500	.500	2.033	.688	
1.938	1/4-20	2.500	.500	2.160	.688	
2.001	3/8-16	3.250	.500	2.223	.688	
2.063	3/8-16	3.250	.500	2.287	.688	
2.126	3/8-16	3.250	.500	2.350	.688	
2.188	3/8-16	3.250	.500	2.414	.688	
2.251	3/8-16	3.250	.500	2.477	.688	
2.316	3/8-16	3.250	.500	2.650	.688	



GE INDUSTRIAL MOTORS
a WOLONG company

OUTLINE, NEMA TEFC 447/449
VERTICAL HOLLOW SHAFT, HIGH THRUST GRS LOWER
6550 BD, 700 CU. IN. C/90X

SIGNATURES

MODEL	DATE	TITLE
LAXMIKANTH	01/18/2017	DETAIL
LAXMIKANTH	01/18/2017	DETAIL
HARIKIRAN	01/18/2017	DESIGN
HARIKIRAN	01/18/2017	DESIGN

REVISIONS

REV.	DESCRIPTION	DATE	APPROVED
1	ISAC# 19-0415	05/15/2019	HARIKIRAN
2	ISAC# 20-0331	04/01/20	SACHIN

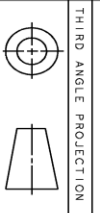
SIZE DRAWING NO. B
148CB49TMHKCCAA0001 002

REV. 1
SHEET 1

SCALE: 0.100
REF. No.: 148CB49TMHKCCAA0001

SIZE DRAWING B
148CB49TMHKCCAA0001 002

REV. 1
SHEET 1



PROPRIETARY INFORMATION

© Copyright 2018 Wolong Electric America LLC AND/OR ITS AFFILIATES. All rights reserved. This document and its information is the property of the Wolong Electric America LLC and its affiliates. It has been provided solely for the private use. Copying, reproducing, selling, importing, exporting, displaying, transmitting or distributing this document or any of the information it contains is strictly prohibited. The Wolong Electric America LLC.

Marks:

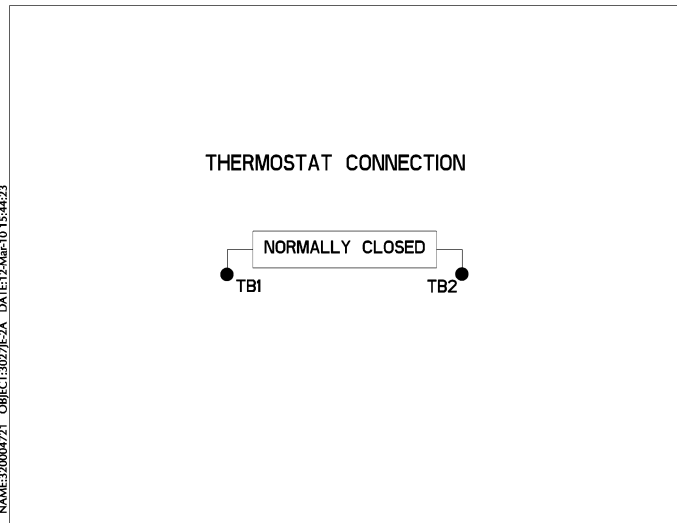
Connection Diagram
GEM2034E-FIG7



Heater Connection
3027JE-1C



Thermostat Connection
3027JE-2A



NAME:320004721 OBJECT:3027JE-2A DATE:12-Mar-10 15:44:23



End shield Assembly		
Part Description	DE Side Part#	ODE Side Part#
End Shield	115E8660AA1	115E8670LA1
Bearing	235A2522AJ01	235A2536AB01
Slinger/Inproseal	149C4399G06	

Fan & Fan Cover Assembly	
Part Description	Part#
Fan	153B1890G01
Fan Cover	128D6847AA1

Conduit & Accessories Box Assembly	
Part Description	Part#
Conduit Box	118D4408AD2

Mechanical Accessories	
Part Description	Part#
Brake	
Tachometer	

