



GE INDUSTRIAL MOTORS
a **WOLONG** company

Product Technical Information

February 12, 2023

Data shown is for the current revision model #. Ensure your nameplate model # matches.

Model Number:	5KS513DAJ6033
Catalog Number:	V919
Instruction Manual:	GEI-M1045
Connection Diagram:	GEM2034E-FIG23
Outline Drawing:	148CB53VMLKGPAC0001

Accessory Connection Diagrams			
Bearing Thermocouple:	None	Heater:	3027JE-1C
RTD:	None	Thermistor:	None
Thermostat:	3027JE-2A	Winding Thermocouple:	None
Bearing RTD:	None		

Table of Contents	
Specification	01
Performance Characteristics	02
Outline Drawing	03
Connection Drawing(s)	04

Marks:

MODEL NUMBER:	5KS513DAJ6033	Estimated Weight:	6525 Lbs
Outline Drawing:	148CB53VMLKGPAC0001	Time Rating:	CONT
Connection Diagram:	GEM2034E-FIG23	Enclosure:	WPI
Instruction Book:	GEI-M1045	Encl Construction:	OPEN
Design Code:	50ED1748A	Ambient Max(°C):	40
Type:	KS	Alt Ambient Max(°C):	--
Frame:	B5013TP30	Insulation Class:	F
Phases:	3	NEMA Design:	-
Poles:	4	Nominal Efficiency:	95.8 %
Output Power:	1000HP 740KW	Guaranteed Efficiency:	95.0 %
RPM:	1780	3/4 Load Efficiency:	--
Voltage:	460	KVA Code:	G
Hertz:	60	Max KVAR:	141.0
Amps - FL:	1063.0	Power Factor:	91.5
Service Factor:	1.0	Bearing - DE:	6219ZC3
Alt Service Factor:	--	Bearing - ODE:	29330

Enclosure is Weather Protected One

Stamped Nameplate Notes:

NEMA ENCLOSURE WP-I, CSA ENCL DP
 THERMOSTAT LEADS TB1-TB2:TRIP
 HTR LDS HE1-HE2 115V 350W
 UPPER BRG LUBE OIL: 10.82 QTS
 AMB 6 DEG C TO 40 DEG C: ISO 150 (MINERAL OR SYNTHETIC)
 AMB -15 DEG C TO 5 DEG C: ISO 68 SYNTHETIC
 LOWER BRG LUBE OIL: 2.5 QTS
 AMB 0 DEG C TO 40 DEG C : ISO 32 (MINERAL OR SYNTHETIC)
 AMB -15 DEG C TO 0 DEG C: ISO 32 SYNTHETIC
 ROT CCW FACING TOP LEAD/PH SEQ 1-2-3/1-2-3
 2750 LBS MIN CONTINUOUS DOWNTHRUST REQ"D
 INVERTER DUTY
 ALTERNATE RATING FOR PWM CONTROL
 1.0 SF. VAR TORQUE RANGE 5-60 HZ

Additional Information:

4 POLE,VERT HOLLOW SHAFT HIGH THRUST(SRTB)
NON-REVERSE COUPLING,BX=2.438
(3) NC, CL F, TRIP THERMOSTAT LEADS AND
115V HEATER LEADS TO ACCESSORY BOX
RCF=1503 CPM CG=34.8 IN STAT DEF=0.0156 IN
BEARING LIFE 8760 HOURS AT 21900 LB THRUST
5700 Cu. In. CBOX; C/B GRD PLATE
SHAFT GROUND RING AT LOWER END BRG CAP
INSULATED BEARING SYSTEM AT UPPER END



Performance Characteristics

1st Winding 1st Connection

Design: 50ED1748A

Marks:

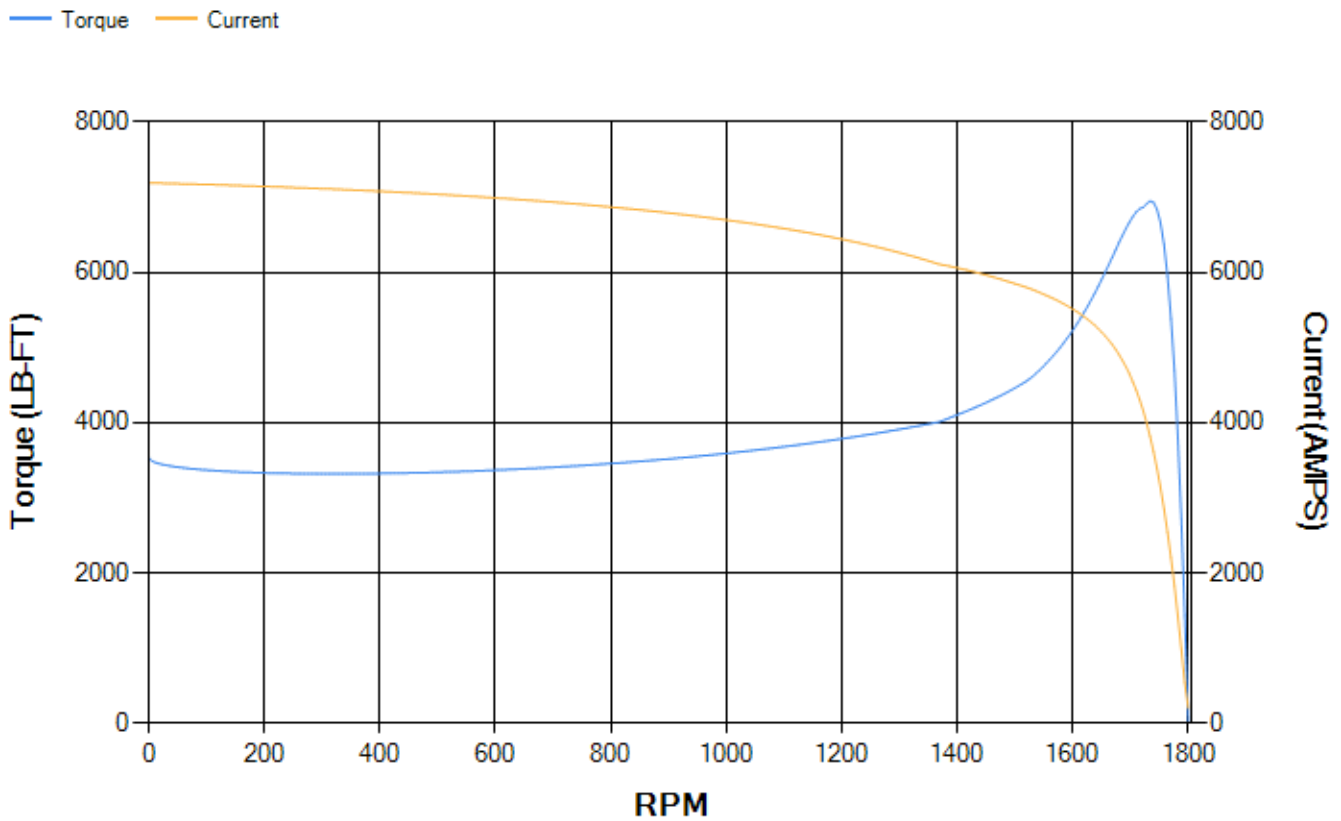
LOAD %	125.0	115.0	100.0	75.0	50.0	25.0	0.0
% EFF	95.35	95.66	96.28	96.63	96.89	96.17	0.00
% PF	91.06	91.4	92.33	91.06	87.79	73.65	3.45
AMPS	1347.41	1231.11	1051.88	797.76	550.18	330.36	196.7

TORQ(FL)#FT	2945.69	TORQ(LR)%FL	120.16	TORQ(BD)%FL	232.87
AMPS(LR)	7192.31	PF AT START	0.23		

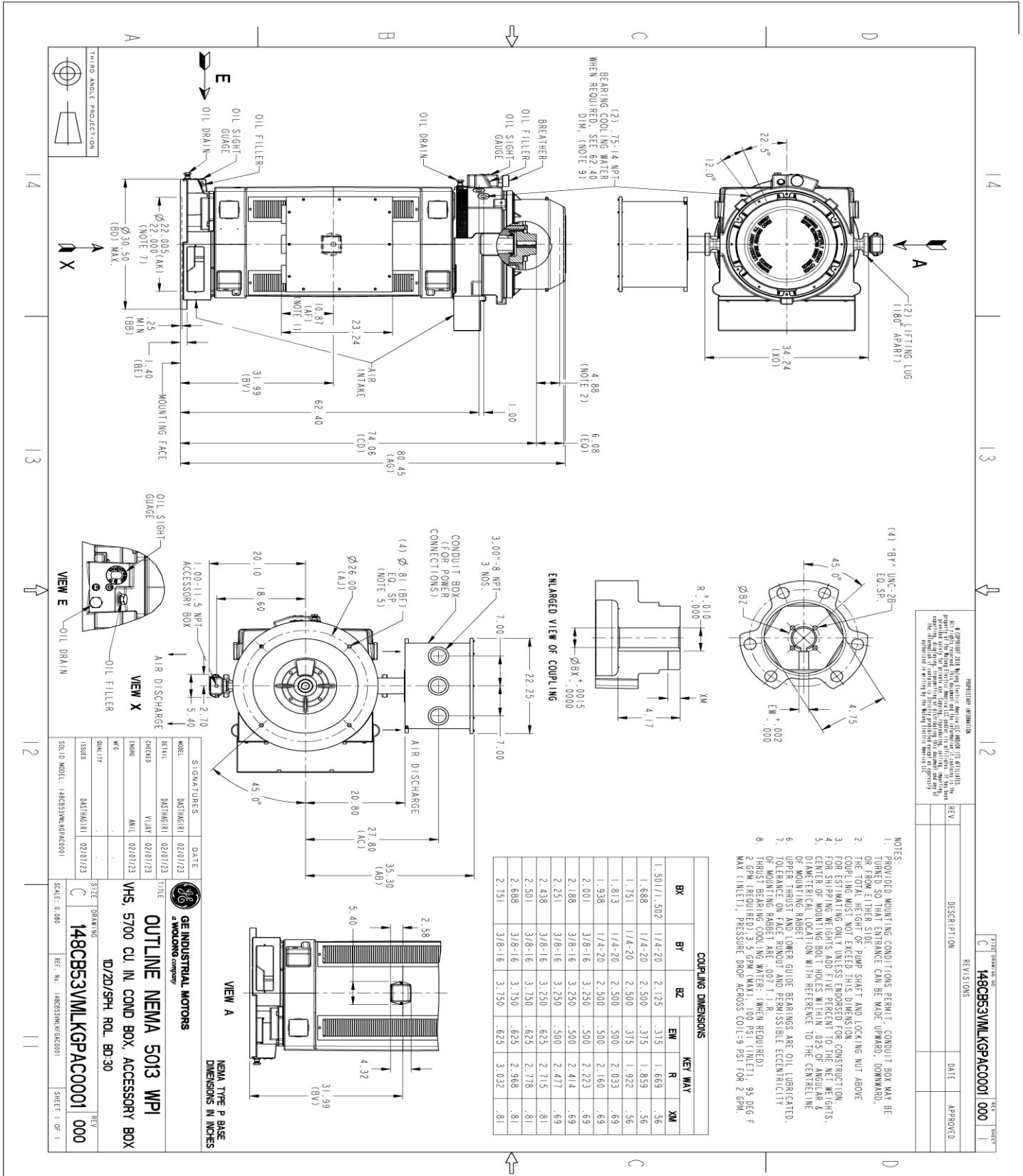
This motor is capable of two cold or one hot start with a maximum connected load inertia of 5022 Lb-Ft Sq (211.43 Kg-meter Sq)at 100% voltage, where the load torque varies with the square of the speed. Acceleration time with maximum inertia and the above load type is 11 seconds. Safe stall time at 100% voltage is 33 seconds cold, 18 seconds hot. Rotor inertia is 278.23 Lb-Ft Sq (11.71 Kg-meter Sq).

Open Circuit A-C:	1.474	Short Circuit D-C:	0.024
Short Circuit A-C:	0.037	X/R Ratio:	8.972
Stator Slots:	72	Rotor Slots:	58

Speed Torque Current Curve (First Connection, First Speed)



Marks:



PROHIBITED INFORMATION
 A copy of this drawing is available to all persons who are in possession of this drawing. It is the responsibility of the user of this drawing to protect it from unauthorized disclosure. The user of this drawing is prohibited from releasing any information contained herein to any third party without the written consent of GE Industrial Motors.

REV.	DESCRIPTION	DATE	APPROVED

SIZE DRAWING NO.	C
REVISIONS	148CB53VMLKGPAC001 000

DATE	
SHEET	1

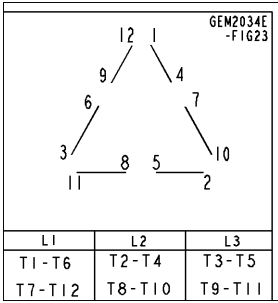
GE INDUSTRIAL MOTORS
 a WOLONG company

OUTLINE NEMA 5013 WPI
 VHS, 5700 CU IN COND BOX, ACCESSORY BOX

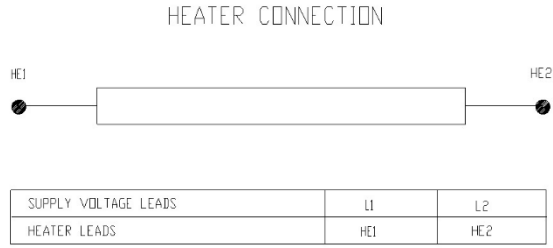
DATE: 02/01/23
 DRAWING: 148CB53VMLKGPAC001
 SCALE: 0.680
 SHEET 1 OF 1

Marks:

Connection Diagram
GEM2034E-FIG23

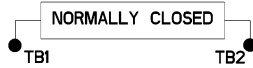


Heater Connection
3027JE-1C



Thermostat Connection
3027JE-2A

THERMOSTAT CONNECTION



NAME:32000471 OBJECT:3027JE-2A DATE:12-Mar-10 15:44:23

