

BALDOR® • RELIANCE 

Product Information Packet

VDRX14244T

2HP,1755//1450RPM,3PH,60/50HZ,145TC,XPFC

Part Detail							
Revision:	A	Status:	PRD/A	Change #:		Proprietary:	No
Type:	AC	Elec. Spec:	35WGN909	CD Diagram:	CD0005	Mfg Plant:	
Mech. Spec:		Layout:	35LYX734	Poles:	04	Created Date:	06-20-2019
Base:		Eff. Date:	05-04-2020	Leads:	9#18		

Specs			
Catalog Number:	VDRX14244T	Duty Rating:	CONT
Enclosure:	XPFC	Electrically Isolated Bearing:	Not Electrically Isolated
Frame:	145TC	Feedback Device:	NO FEEDBACK
Frame Material:	Steel	Heater Indicator:	No Heater
Output @ Frequency:	1.500 HP @ 60 HZ	Insulation Class:	F
	2.000 HP @ 60 HZ	Inverter Code:	Inverter Duty
Synchronous Speed @ Frequency:	1800 RPM @ 60 HZ	IP Rating:	NONE
Voltage @ Frequency:	230.0 V @ 60 HZ	KVA Code:	L
	190.0 V @ 50 HZ	Lifting Lugs:	No Lifting Lugs
	380.0 V @ 50 HZ	Locked Bearing Indicator:	Locked Bearing
	460.0 V @ 60 HZ	Motor Lead Termination:	Flying Leads
XP Class and Group:	CLI GP C,D	Motor Type:	3528M
XP Division:	Division I	Mounting Arrangement:	F1
Agency Approvals:	UR	Power Factor:	74
	CSA EEV	Product Family:	General Purpose
	CSA	Pulley Face Code:	C-Face
Auxillary Box:	No Auxillary Box	Rodent Screen:	None
Auxillary Box Lead Termination:	None	RoHS Status:	ROHS NON-COMPLIANT

Base Indicator:	No Mounting	Shaft Ground Indicator:	No Shaft Grounding
Bearing Grease Type:	Polyrex EM (-20F +300F)	Shaft Rotation:	Reversible
Blower:	None	Speed Code:	Single Speed
Constant Torque Speed Range:	6	Motor Standards:	NEMA
Current @ Voltage:	5.800 A @ 230.0 V	Starting Method:	Direct on line
	5.400 A @ 190.0 V	Thermal Device - Bearing:	None
	2.900 A @ 460.0 V	Thermal Device - Winding:	Normally Closed Thermostat
	2.700 A @ 380.0 V	Vibration Sensor Indicator:	No Vibration Sensor
Design Code:	B	Winding Thermal 1:	None
Drip Cover:	No Drip Cover	Winding Thermal 2:	None
		XP Temp Code:	T3C

Nameplate NP1401XPSLEV										
NO.						CC	010A			
S/N						TEMP CODE	T3C			
SPEC.	35-0000-0202					INV.TYPE	PWM			
CAT.NO.	VDRX14244T					C HP FR	60	C HP TO	90	
HP	2/1.5					CT HZ FROM	6	CT HZ TO	60	
VOLTS	230/460//190/380					VT HZ FROM	6	VT HZ TO	60	
AMPS	5.8/2.9//5.4/2.7					MAG CUR	3.6/1.8			
RPM	1755//1450					MX RPM	2700			
HZ	60//50	PH	3	CL	F	NOM.EFF.	86.5			
SER.F.	1.00	DES	B	SL HZ	1.5	WK2	0.17			
FRAME	145TC	RATING	40C AMB-CONT							
	55C AMB @ 1.0SF									
	1.15 SF SINEWAVE					NEMA MG-1 PT 5,IP55				

Parts List		
Part Number	Description	Quantity
SA371148	SA 35-0000-0202	1.000 EA
RA360828	RA 35-0000-0202	1.000 EA
LB1119N	WARNING LABEL	1.000 EA
LC0145B01	CONNECTION LABEL	1.000 EA
PK3082	STYROFOAM CRADLE	1.000 EA
NP1401XPSLEV	SS XP INV UL CSA-EEV CC CL-I GP-C&D	1.000 EA
85XU0407S04	4X1/4 U DRIVE PIN STAINLESS	2.000 EA
85XU0407S04	4X1/4 U DRIVE PIN STAINLESS	4.000 EA
MN416A01	TAG-INSTAL-MAINT no wire (2100/bx) 4/22	1.000 EA
LB1359F	ALUM XP CAUTION LABEL	1.000 EA
35FH4005A01SP	IEC FH NO GREASER W/PRIMED	1.000 EA
51XW1032A06	10-32 X .38, TAPTITE II, HEX WSHR SLTD S	3.000 EA
35FN3002A05SP	EXFN, PLASTIC, 6.376 OD, .638 ID	1.000 EA
51XB1214A16	12-14X1.00 HXWSSLD SERTYB	1.000 EA
MJ1000A02	GREASE, MOBIL POLYREX EM - 124047	0.050 LB
HA3104A08	THRUBOLT-5/16-18X9.375 X X	4.000 EA
XY3118A12	5/16-18 HEX NUT DIRECTIONAL SERRATION	4.000 EA
35EP3700B07	FR ENDPLATE, XPFC - GROUP C, W/ DRAIN	1.000 EA
HW5100A03	WAVY WASHER (W1543-017)	1.000 EA
HW4506A02	BREATHER/DRAIN-EXP PROOF-.125-27 NPTF AI	1.000 EA
HW3022E05	.125 DIA X .500 ROLLED SPRING PIN	1.000 EA
HA2009A89	SPACER FOR XP MTRS - 205 BRG.	1.000 EA
35EP1704A40	PUEP 205 BRG XP,GP C,ALUM SLINGER,DRAIN	1.000 EA
HA2071A02	SLINGER ALUM (AUTO)	1.000 EA

Parts List (continued)		
Part Number	Description	Quantity
80XN1032A04	10-32 X 1/4 SET SCREW	1.000 EA
84XN1032J20	SCREW, SOC 10-32 X 1 1/4"BMH4602	2.000 EA
HW4001A01	1/4 HX SOC PIPE PLG (F/S) ALLOY STEEL W/	2.000 EA
60XN1032A07	10-32 X .4375 TRUSS HEAD, TORX SERRATED	2.000 EA
HW4506A02	BREATHER/DRAIN-EXP PROOF-.125-27 NPTF AI	1.000 EA
HW3022E05	.125 DIA X .500 ROLLED SPRING PIN	1.000 EA
35CB1005A01	CONDUIT BOX,MACH - GROUP "C" MTRS	1.000 EA
RM1020A41	O-RING, -150 BUNA-N, .103 CS X 2.862 ID	1.000 EA
11XW1032G06	10-32 X .38, TAPTITE II, HEX WSHR SLTD U	1.000 EA
HW3001B01	BRASS CUP WASHER, FOR #10 SCREW	1.000 EA
35CB1501A01	CONDUIT BOX LID, MACH. - GROUP "C" MTRS	1.000 EA
MG1500Y02	WILKOPON PRIMER YELLOW	0.022 GA
MG1025G29	WILKOFASST, 789.229, DARK CHARCOAL GRAY	0.022 GA
36PA1001	PKG GRP, PRINT PK1017A06	1.000 EA
HW2501D13	KEY, 3/16 SQ X 1.375	1.000 EA
HA7000A01	KEY RETAINER 7/8" DIA SHAFT	1.000 EA

AC Induction Motor Performance Data

Record # 74913

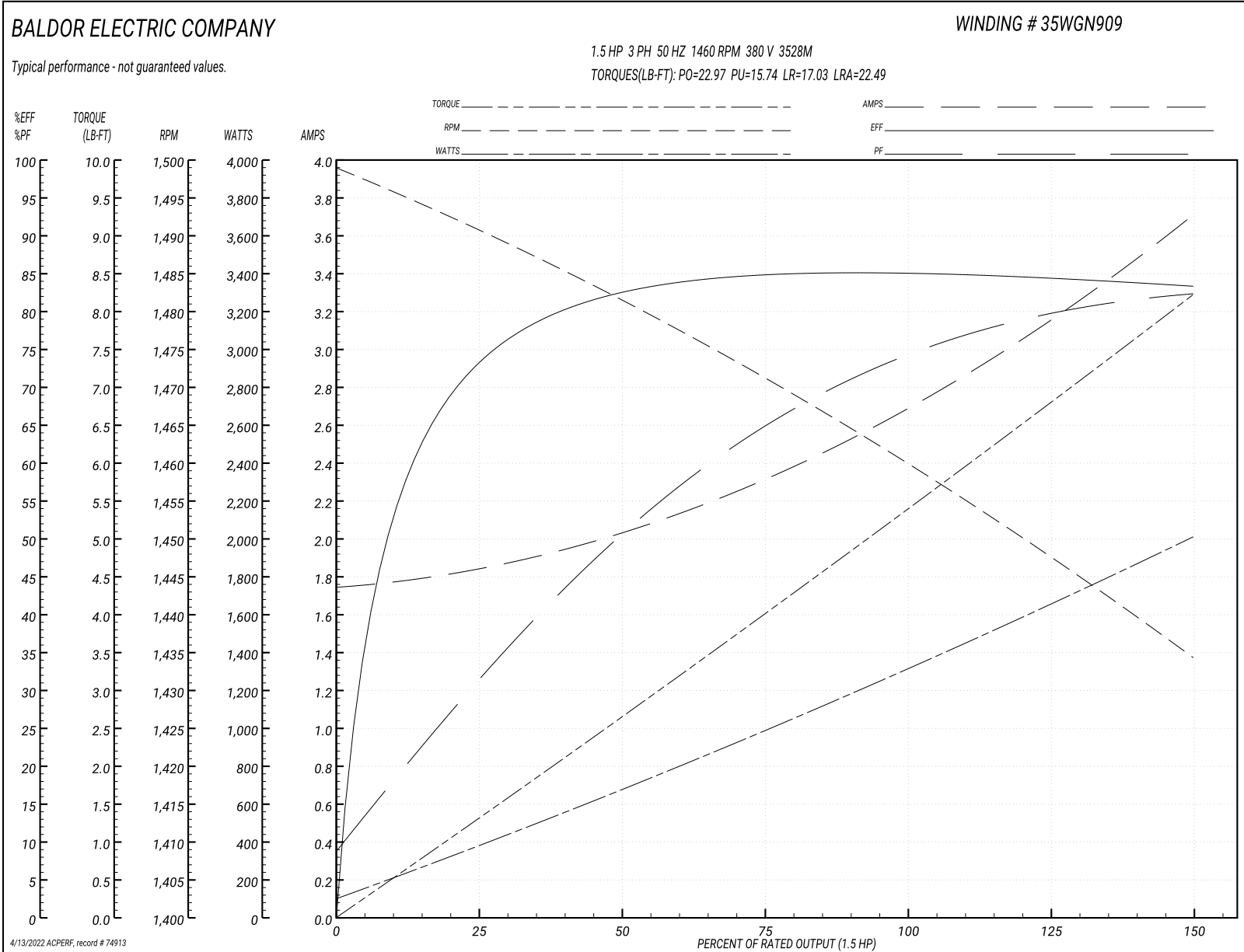
Typical performance - not guaranteed values

Winding: 35WGN909-R011		Type: 3528M		Enclosure: XPFC	
Nameplate Data			380 V, 50 Hz: High Voltage Connection		
Rated Output (HP)		2	Full Load Torque		5.4 LB-FT
Volts		230/460//190/380	Start Configuration		direct on line
Full Load Amps		5.8/2.9//5.4/2.7	Breakdown Torque		22.97 LB-FT
R.P.M.		1755//1450	Pull-up Torque		15.74 LB-FT
Hz	60 Phase	3	Locked-rotor Torque		17.03 LB-FT
NEMA Design Code	B KVA Code	L	Starting Current		22.49 A
Service Factor (S.F.)		1	No-load Current		1.76 A
NEMA Nom. Eff.	86.5 Power Factor	74	Line-line Res. @ 25°C		8.02 Ω
Rating - Duty		40C AMB-CONT	Temp. Rise @ Rated Load		59°C
S.F. Amps			Temp. Rise @ S.F. Load		70°C
			Locked-rotor Power Factor		57.8
			Rotor inertia		0.165 LB-FT ²

Load Characteristics 380 V, 50 Hz, 1.5 HP

% of Rated Load	25	50	75	100	125	150
Power Factor	32	52	65	73	80	83
Efficiency	72.8	82.2	84.8	85.2	84.5	83.2
Speed	1491	1481	1471	1460	1448	1434
Line amperes	1.83	2.01	2.32	2.72	3.16	3.7

Performance Graph at 380V, 50Hz, 1.5HP Typical performance - Not guaranteed values



AC Induction Motor Performance Data

Record # 74914

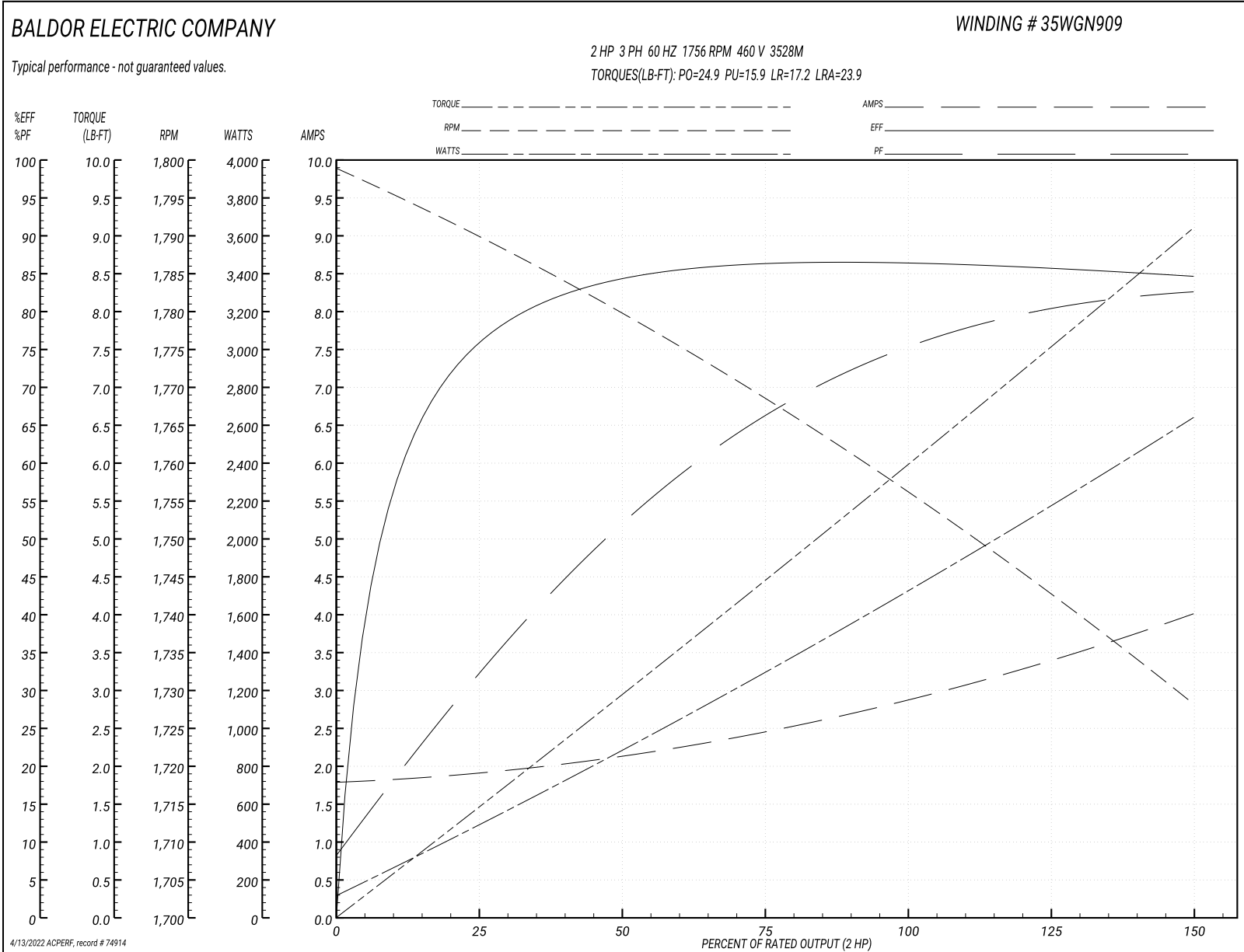
Typical performance - not guaranteed values

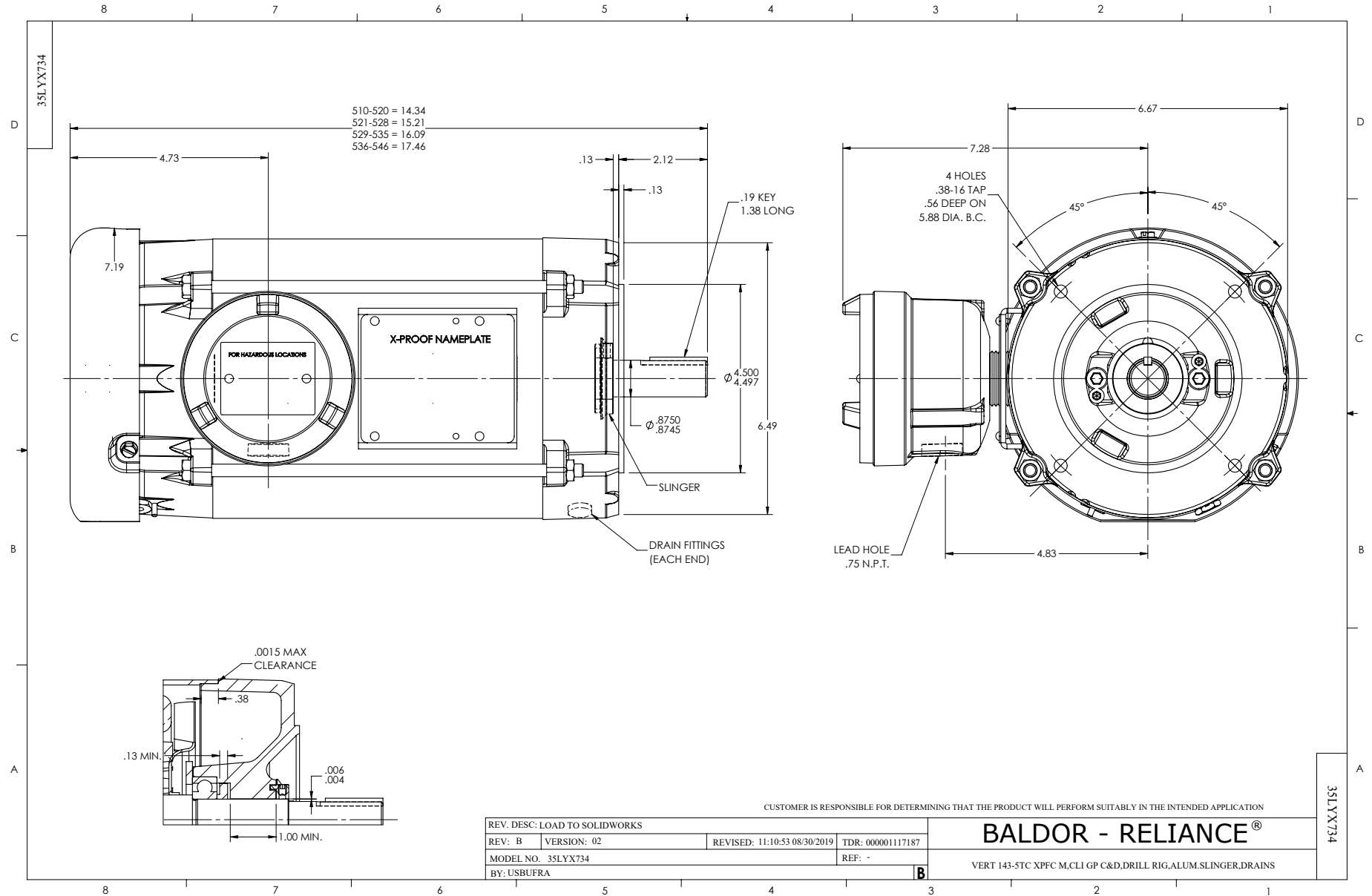
Winding: 35WGN909-R011		Type: 3528M		Enclosure: XPFC	
Nameplate Data			460 V, 60 Hz: High Voltage Connection		
Rated Output (HP)		2	Full Load Torque		5.99 LB-FT
Volts		230/460//190/380	Start Configuration		direct on line
Full Load Amps		5.8/2.9//5.4/2.7	Breakdown Torque		24.9 LB-FT
R.P.M.		1755//1450	Pull-up Torque		15.9 LB-FT
Hz	60 Phase	3	Locked-rotor Torque		17.2 LB-FT
NEMA Design Code	B KVA Code	L	Starting Current		23.9 A
Service Factor (S.F.)		1	No-load Current		1.81 A
NEMA Nom. Eff.	86.5 Power Factor	74	Line-line Res. @ 25°C		8.02 Ω
Rating - Duty		40C AMB-CONT	Temp. Rise @ Rated Load		65°C
S.F. Amps			Temp. Rise @ S.F. Load		77°C
			Locked-rotor Power Factor		52.4
			Rotor inertia		0.165 LB-FT ²

Load Characteristics 460 V, 60 Hz, 2 HP

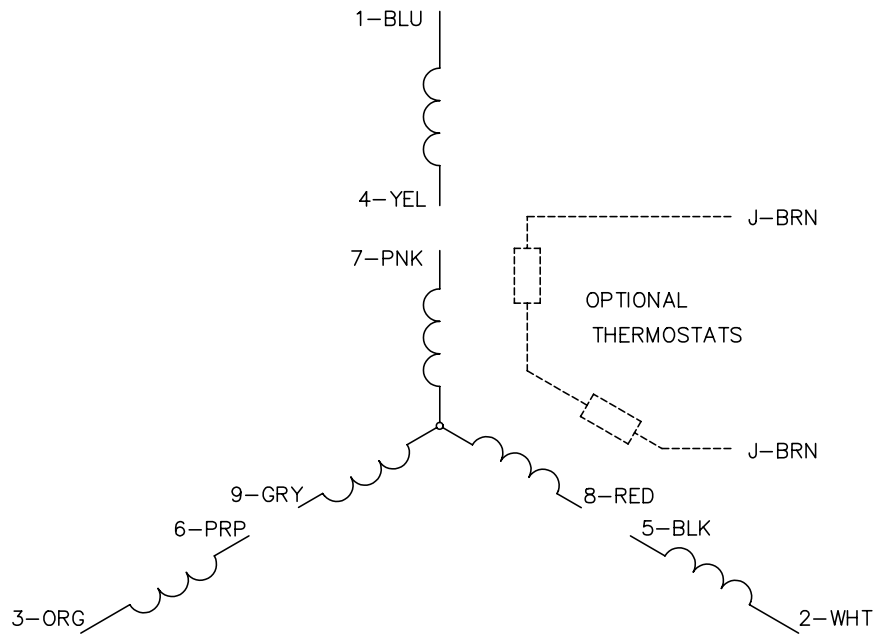
% of Rated Load	25	50	75	100	125	150
Power Factor	33	53	66	74	80	83
Efficiency	75.5	84	86.3	86.5	85.8	84.5
Speed	1790	1779	1769	1756	1743	1728
Line amperes	1.89	2.11	2.46	2.91	3.4	4

Performance Graph at 460V, 60Hz, 2.0HP Typical performance - Not guaranteed values

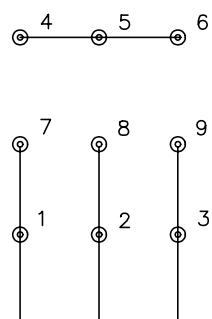




CD0005

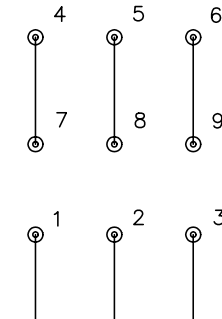


LOW VOLTAGE (2Y)



LINE

HIGH VOLTAGE (1Y)



LINE

NOTES:

1. INTERCHANGE ANY TWO LINE LEADS TO REVERSE ROTATION.
2. OPTIONAL THERMOSTATS ARE PROVIDED WHEN SPECIFIED.
3. ACTUAL NUMBER OF INTERNAL PARALLEL CIRCUITS MAY BE A MULTIPLE OF THOSE SHOWN ABOVE.
4. LEAD COLORS ARE OPTIONAL. LEADS MUST ALWAYS BE NUMBERED AS SHOWN.

REV. DESC: REVISE TO SHOW OPTIONAL COLORS			
REV. LTR: E	BY: JLP	REVISED: 01/19/99 10:15	TDR: 0171435
900000		FILE: AAA00005140	MDL: -
		MTL: -	

BALDOR ELECTRIC Co.

3PH, DV, 9 LEADS

CD0005

Marketing maintained PDF of MN416:

<http://www.baldor.com/support/Literature/Load.ashx/MN416?ManNumber=MN416>