

BALDOR® • RELIANCE 

Product Information Packet

VECP3661T

3HP, 1755RPM, 3PH, 60HZ, 182TC, 0632M, TEFC, F1

| Part Detail | | | | | | | |
|-------------|--------|-------------|------------|-------------|--------|---------------|------------|
| Revision: | G | Status: | PRD/A | Change #: | | Proprietary: | No |
| Type: | AC | Elec. Spec: | 06WGX181 | CD Diagram: | CD0005 | Mfg Plant: | |
| Mech. Spec: | 06H480 | Layout: | 06LYH480 | Poles: | 04 | Created Date: | 09-26-2013 |
| Base: | N | Eff. Date: | 04-06-2017 | Leads: | 9#16 | | |

| Specs | | | |
|---------------------------------|------------------|--------------------------------|------------------------------|
| Catalog Number: | VECP3661T | Heater Indicator: | No Heater |
| Enclosure: | TEFC | Insulation Class: | F |
| Frame: | 182TC | Inverter Code: | Inverter Duty |
| Frame Material: | Iron | KVA Code: | J |
| Output @ Frequency: | 3.000 HP @ 60 HZ | Lifting Lugs: | Standard Lifting Lugs |
| Synchronous Speed @ Frequency: | 1800 RPM @ 60 HZ | Locked Bearing Indicator: | Locked Bearing |
| Voltage @ Frequency: | 208.0 V @ 60 HZ | Motor Lead Quantity/Wire Size: | 9 @ 16 AWG |
| | 460.0 V @ 60 HZ | Motor Lead Exit: | Ko Box |
| | 230.0 V @ 60 HZ | Motor Lead Termination: | Flying Leads |
| XP Class and Group: | CLI GP A,B,C,D | Motor Type: | 0632M |
| XP Division: | Division II | Mounting Arrangement: | F1 |
| Agency Approvals: | CSA EEV | Power Factor: | 77 |
| | UR | Product Family: | Chemical Processing (Not DC) |
| | CSA | Pulley End Bearing Type: | Ball |
| | CCSA US | Pulley Face Code: | C-Face |
| Auxillary Box: | No Auxillary Box | Pulley Shaft Indicator: | Standard |
| Auxillary Box Lead Termination: | None | Rodent Screen: | None |
| Base Indicator: | No Mounting | RoHS Status: | ROHS COMPLIANT |

| | | | |
|---------------------------------------|---------------------------|------------------------------------|---------------------|
| Bearing Grease Type: | Polyrex EM (-20F +300F) | Shaft Extension Location: | Pulley End |
| Blower: | None | Shaft Ground Indicator: | No Shaft Grounding |
| Constant Torque Speed Range: | 1.5 | Shaft Rotation: | Reversible |
| Current @ Voltage: | 8.600 A @ 208.0 V | Shaft Slinger Indicator: | Shaft Slinger |
| | 8.200 A @ 230.0 V | Speed Code: | Single Speed |
| | 4.100 A @ 460.0 V | Motor Standards: | NEMA |
| Design Code: | B | Starting Method: | Direct on line |
| Drip Cover: | Drip Cover | Thermal Device - Bearing: | None |
| Duty Rating: | CONT | Thermal Device - Winding: | None |
| Electrically Isolated Bearing: | Not Electrically Isolated | Vibration Sensor Indicator: | No Vibration Sensor |
| Feedback Device: | NO FEEDBACK | Winding Thermal 1: | None |
| Front Face Code: | Standard | Winding Thermal 2: | None |
| Front Shaft Indicator: | None | XP Temp Code: | T3C |

| | | | | | | | | | | |
|--------------------------|--------------|----|--|--|-------------|------------|-----------|------------|---|--|
| Nameplate NP3257E | | | | | | | | | | |
| CAT.NO. | VECP3661T | | | | | | | | | |
| SPEC. | 06H480X181G1 | | | | | | | | | |
| HP | 3 | TE | | | | | | | | |
| VOLTS | 208-230/460 | | | | | | | | | |
| AMP | 8.6-8.2/4.1 | | | | | | | | | |
| RPM | 1755 | | | | | | | | | |
| FRAME | 182TC | | | | | | HZ | 60 | | |
| SER.F. | 1.15 | | | | CODE | J | | DES | B | |
| RATING | 40C AMB-CONT | | | | | | | | | |
| SN | | | | | | | | | | |
| DE | 6206 | | | | | ODE | 6206 | | | |
| NEMA-NOM-EFF | 89.5 | | | | | PF | 77 | | | |
| G.MIN.EFF | 87.5 | | | | | CC | 010A | | | |
| T. CODE | T3C | | | | | T= | 160 | | | |
| | | | | | | | | PH | 3 | |
| | | | | | | | | CL | F | |

| | | | |
|--------------------------------|--------------|------------------|------|
| Nameplate NP3260E | | | |
| SPEC. | 06H480X181G1 | | |
| D.E. BRG. | 30BC02XP30X | | |
| O.D.E. BRG. | 30BC02XP30X | | |
| GREASE | POLYREX EM | | |
| RPM MAX | 2700 | MAX. KVAR | 0.86 |
| BLANK | | | |
| INV. TYPE | PWM | | |
| T= | 160 | | |
| C HP FR | 60 | | |
| CT HZ FROM | 1.5 | | |
| VT HZ FROM | 0- | | |
| HTR-VOLTS | | | |
| HTR-WATTS | | | |
| C HP TO | 90 | | |
| CT HZ TO | 60 | | |
| VT HZ TO | 60 | | |
| HTR-AMPS | | | |
| MAX. SPACE HEATER TEMP. | | | |

| Parts List | | |
|---------------|--|----------|
| Part Number | Description | Quantity |
| SA269798 | SA 06H480X181G1 | 1.000 EA |
| RA256443 | RA 06H480X181G1 | 1.000 EA |
| 36FN3000C01SP | EXFN, PLASTIC, 5.25 OD, .912 ID | 1.000 EA |
| HW3201A05 | 3/8-16 EYEBOLT | 1.000 EA |
| 06CB1000A02G | CONDUIT BOX, MACH GRAY | 1.000 EA |
| RM1016 | LEAD SEPARATOR GASKET - 305/306 C.P.MOTO | 1.000 EA |
| 51XF2520A16 | SCREW,HEX SER SLT HD,ZN 1/4-20X1.00LG TD | 2.000 EA |
| WD1000B16 | T&B CX70TN OR L70P TERMINAL LUG | 2.000 EA |
| 10XN2520S06 | 1/4 20X3/8 HX HD CAP S.S. | 2.000 EA |
| 11XW1032G06 | 10-32 X .38, TAPTITE II, HEX WSHR SLTD U | 1.000 EA |
| HW3001B01 | BRASS CUP WASHER, FOR #10 SCREW | 1.000 EA |
| 36EP1100B73G | FREP 6206,GRSR,RLF,.25-20 FH HOLES @.50 | 1.000 EA |
| HW4500A01 | 1641B(ALEMITE)400 UNIV, GREASE FITT | 1.000 EA |
| HA4051A00 | PLASTIC CAP FOR GREASE FITTING | 1.000 EA |
| HW4500A17 | 317400 ALEMITE GREASE RELIEF | 1.000 EA |
| HA4054 | SHORT T-DRAIN FITTING, .125" N.P.T. | 1.000 EA |
| HW5100A06 | W2420-025 WVY WSHR (WB) | 1.000 EA |
| 36EP1300A48G | SPL PU 206 BRG. 182-4TC W/GREASER & RELI | 1.000 EA |
| HW4500A01 | 1641B(ALEMITE)400 UNIV, GREASE FITT | 1.000 EA |
| HA4051A00 | PLASTIC CAP FOR GREASE FITTING | 1.000 EA |
| HW4500A17 | 317400 ALEMITE GREASE RELIEF | 1.000 EA |
| HA4054 | SHORT T-DRAIN FITTING, .125" N.P.T. | 1.000 EA |
| 10XN2520A24 | 1/4-20X 1 1/2 HEX HD X | 4.000 EA |
| HA3101A34 | THRUBOLT- 1/4-20 X 10.375 | 4.000 EA |

| Parts List (continued) | | |
|------------------------|--|----------|
| Part Number | Description | Quantity |
| 51XB1214A16 | 12-14X1.00 HXWSSLD SERTYB | 1.000 EA |
| 36FH1001A02G | FAN HOUSING MACH, W/GRAY EPOXY | 1.000 EA |
| 10XN2520A16 | 1/4-20 X 1 HEX HEAD CAP SCR, ZINC PLATED | 3.000 EA |
| WD4100A02 | DP-1000 HEYCO PLUG OR 62MP1000 MICRO PL | 1.000 EA |
| 36FH4500A10 | DRIP/FAN COVER, W/PRIMER | 1.000 EA |
| 12XF0832A06 | 8-32 X 3/8 TYP HX SL | 4.000 EA |
| 06CB1502G | LIPPED CONDUIT BOX LID CAST, GRAY EPOXY | 1.000 EA |
| 06GS1003 | GASKET, KOBX LID, 1/8" THICK BLACK NEOPR | 1.000 EA |
| 10XN2520A12 | 1/4-20 X 3/4 HEX HEAD CAP | 2.000 EA |
| HW1001A25 | LOCKWASHER 1/4, ZINC PLT .493 OD, .255 I | 2.000 EA |
| HA1005A22 | SLINGER, OD 2.00, ID 1.14, 206 BRG, GM | 1.000 EA |
| HW4600B36SP | V-RING SLINGER 1.188 X 1.690 X .24 VITON | 1.000 EA |
| HW2501E16 | KEY, 1/4 SQ X 1.750 | 1.000 EA |
| HA7000A02 | KEY RETAINER RING, 1 1/8 DIA, 1 3/8 DIA | 1.000 EA |
| MJ5001A27 | 32220KN GRAY SEALER *MIN BUY 4 QTS=1GAL | 0.001 QT |
| 85XU0407S04 | 4X1/4 U DRIVE PIN STAINLESS | 2.000 EA |
| LB1115N | LABEL,LIFTING DEVICE (ON ROLLS) | 1.000 EA |
| LB1002N | LABEL,MARINE DUTY (ON ROLLS) | 1.000 EA |
| WD1000B17 | T&B CX35TN OR L35P TERMINAL LUG | 1.000 EA |
| MJ1000A02 | GREASE, MOBIL POLYREX EM - 124047 | 0.050 LB |
| MG1025N19 | WILKOFAS, 778.50, RELIANCE BLUE-GREEN | 0.028 GA |
| LC0005E01 | CONN.DIA./WARNING LABEL (LC0005/LB1119N) | 1.000 EA |
| LB1449 | DIV-2/NEC WARNING LABEL | 1.000 EA |
| NP3257E | SS CP SUPER-E DIV-2 UL CSA-C US EEV PREM | 1.000 EA |

Product Information Packet: VECP3661T - 3HP,1755RPM,3PH,60HZ,182TC,0632M,TEFC,F1

| | | |
|-------------|---|----------|
| NP3260E | SS CP SUPER-E AUX DATA INFORMATION | 1.000 EA |
| 85XU0407S04 | 4X1/4 U DRIVE PIN STAINLESS | 2.000 EA |
| 36PA1001 | PKG GRP, PRINT PK1017A06 | 1.000 EA |
| PK3082 | STYROFOAM CRADLE | 1.000 EA |
| MN416A01 | TAG-INSTAL-MAINT no wire (2100/bx) 4/22 | 1.000 EA |

AC Induction Motor Performance Data

Record # 46998

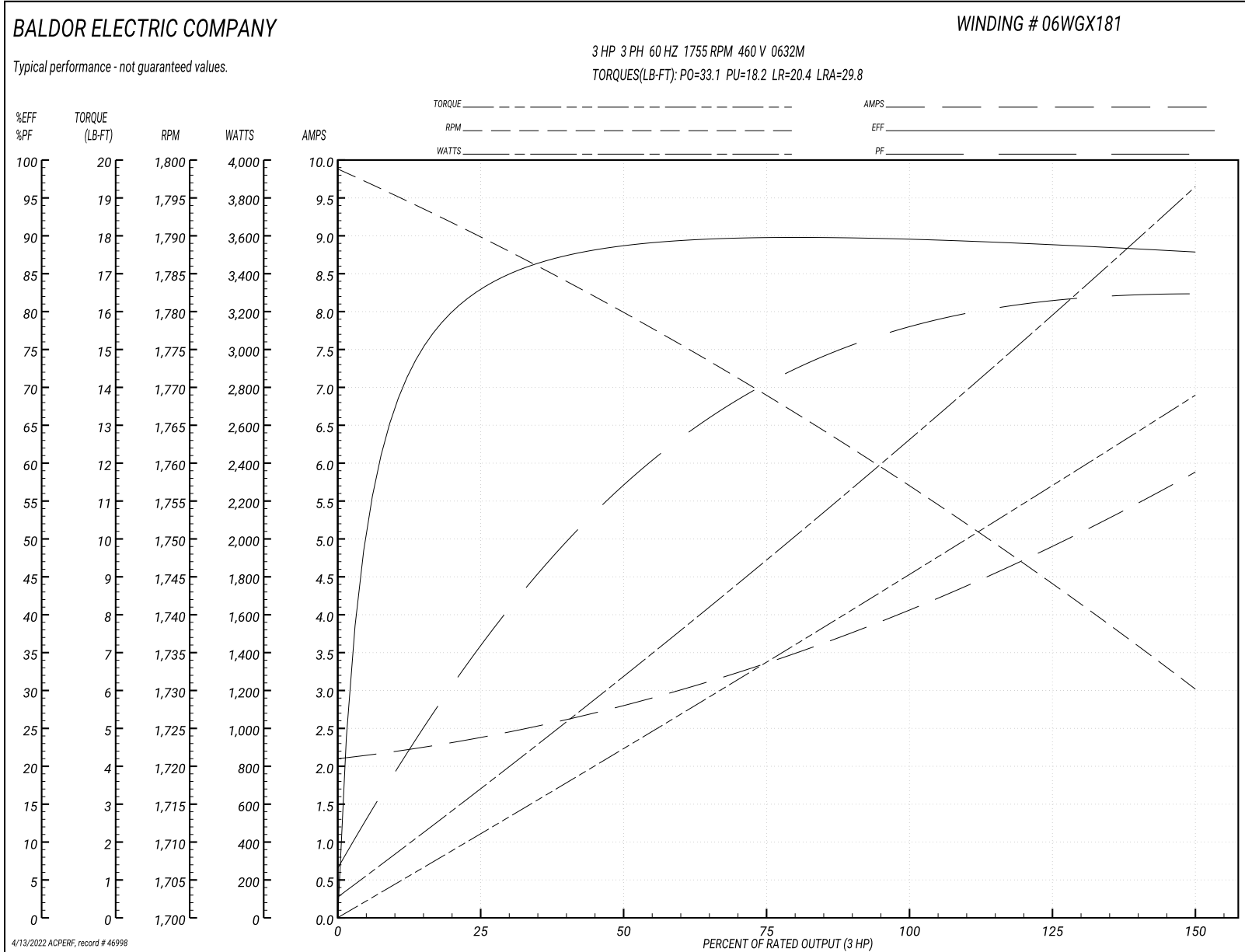
Typical performance - not guaranteed values

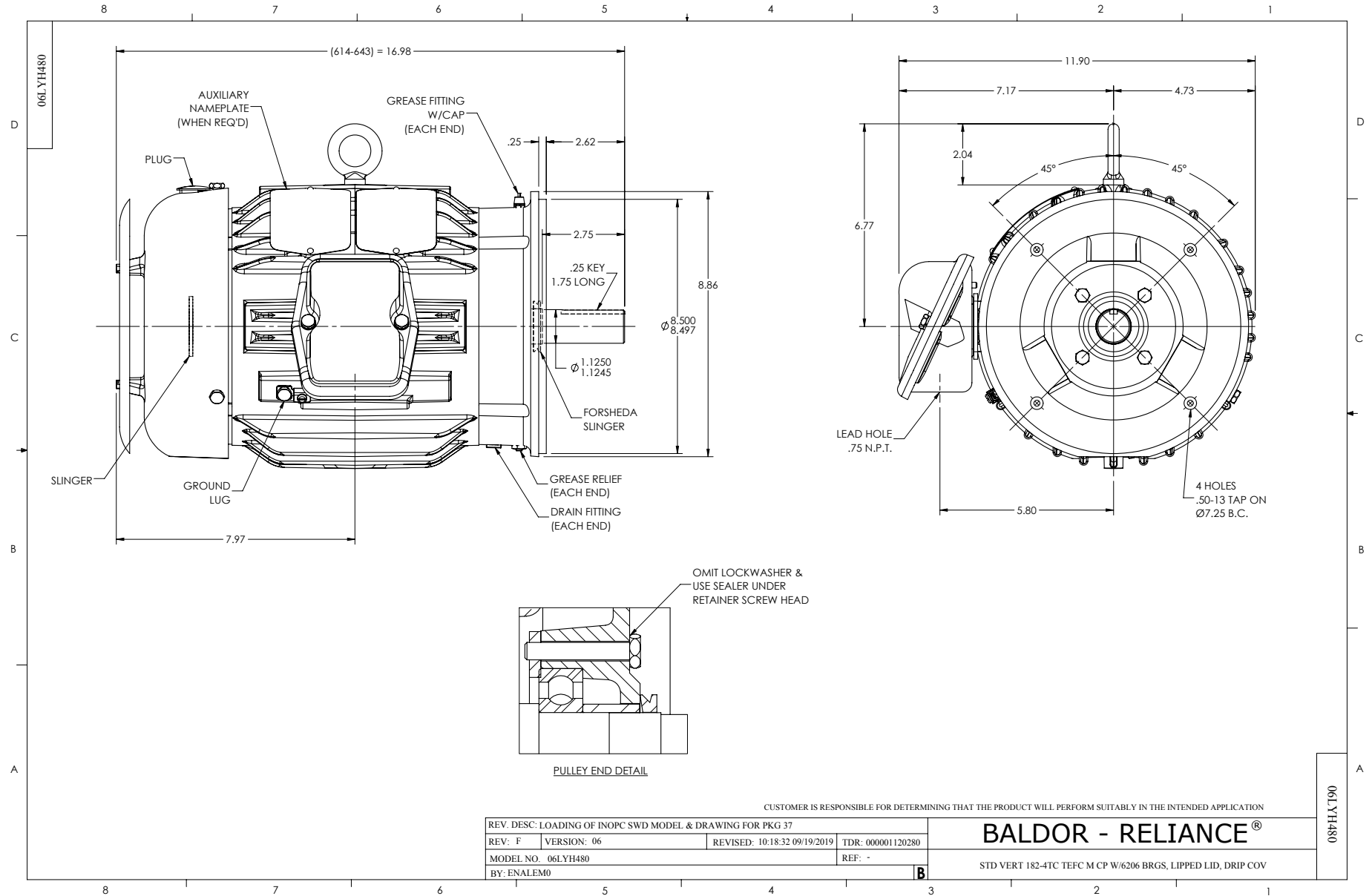
| Winding: 06WGX181-R047 | | Type: 0632M | Enclosure: TEFC | |
|------------------------|-------------------|-------------------------|--|--|
| Nameplate Data | | | 460 V, 60 Hz: High Voltage Connection | |
| Rated Output (HP) | 3 | Full Load Torque | 9.06 LB-FT | |
| Volts | 208-230/460 | Start Configuration | direct on line | |
| Full Load Amps | 8.6-8.2/4.1 | Breakdown Torque | 33.1 LB-FT | |
| R.P.M. | 1755 | Pull-up Torque | 18.2 LB-FT | |
| Hz | 60 Phase | Locked-rotor Torque | 20.4 LB-FT | |
| NEMA Design Code | B KVA Code | Starting Current | 29.8 A | |
| Service Factor (S.F.) | 1.15 | No-load Current | 2.14 A | |
| NEMA Nom. Eff. | 89.5 Power Factor | Line-line Res. @ 25°C | 3.92 Ω | |
| Rating - Duty | 40C AMB-CONT | Temp. Rise @ Rated Load | 35°C | |
| S.F. Amps | | Temp. Rise @ S.F. Load | 42°C | |
| | | Rotor inertia | 0.298 LB-FT ² | |

Load Characteristics 460 V, 60 Hz, 3 HP

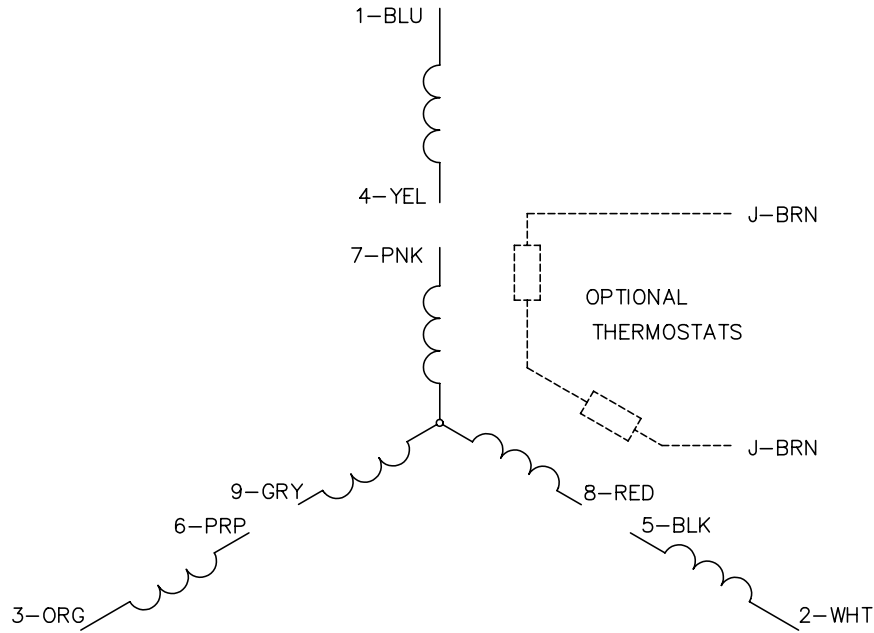
| % of Rated Load | 25 | 50 | 75 | 100 | 125 | 150 | S.F. |
|-----------------|--------|--------|--------|------|--------|------|------|
| Power Factor | 38 | 58 | 70 | 77 | 81 | 83 | 79 |
| Efficiency | 83.6 | 88.9 | 90.1 | 89.9 | 89.1 | 87.8 | 89.4 |
| Speed | 1789.5 | 1779.3 | 1768.8 | 1757 | 1744.4 | 1730 | 1749 |
| Line amperes | 2.34 | 2.79 | 3.39 | 4.1 | 4.91 | 5.86 | 4.59 |

Performance Graph at 460V, 60Hz, 3.0HP Typical performance - Not guaranteed values

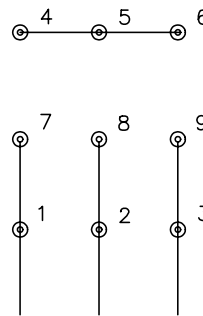




CD0005

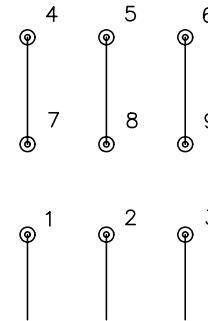


LOW VOLTAGE
(2Y)



LINE

HIGH VOLTAGE
(1Y)



LINE

NOTES:

1. INTERCHANGE ANY TWO LINE LEADS TO REVERSE ROTATION.
2. OPTIONAL THERMOSTATS ARE PROVIDED WHEN SPECIFIED.
3. ACTUAL NUMBER OF INTERNAL PARALLEL CIRCUITS MAY BE A MULTIPLE OF THOSE SHOWN ABOVE.
4. LEAD COLORS ARE OPTIONAL. LEADS MUST ALWAYS BE NUMBERED AS SHOWN.

REV. DESC: REVISE TO SHOW OPTIONAL COLORS

REV. LTR: E BY: JLP

REVISED: 01/19/99 10:15

TDR: 0171435

90000

FILE: AAA00005140

MDL: -

MTL: -

BALDOR ELECTRIC Co.

3PH, DV, 9 LEADS

CD0005