

**BALDOR® • RELIANCE** 

**Product Information Packet**

**VECP4111T**

**25HP, 1180RPM, 3PH, 60HZ, 324TC, 1260M, TEFC, F**

| Part Detail |        |             |            |             |        |               |            |
|-------------|--------|-------------|------------|-------------|--------|---------------|------------|
| Revision:   | U      | Status:     | PRD/A      | Change #:   |        | Proprietary:  | No         |
| Type:       | AC     | Elec. Spec: | 12WGY116   | CD Diagram: | CD0180 | Mfg Plant:    |            |
| Mech. Spec: | 12E914 | Layout:     | 12LYE914   | Poles:      | 06     | Created Date: | 06-08-2011 |
| Base:       | N      | Eff. Date:  | 11-16-2020 | Leads:      | 9#8    |               |            |

| Specs                           |                         |                                |                             |
|---------------------------------|-------------------------|--------------------------------|-----------------------------|
| Catalog Number:                 | VECP4111T               | Heater Indicator:              | No Heater                   |
| Enclosure:                      | TEFC                    | Insulation Class:              | F                           |
| Frame:                          | 324TC                   | Inverter Code:                 | Inverter Duty               |
| Frame Material:                 | Iron                    | KVA Code:                      | H                           |
| Output @ Frequency:             | 25.000 HP @ 60 HZ       | Lifting Lugs:                  | Standard Lifting Lugs       |
| Synchronous Speed @ Frequency:  | 1200 RPM @ 60 HZ        | Locked Bearing Indicator:      | Locked Bearing              |
| Voltage @ Frequency:            | 460.0 V @ 60 HZ         | Motor Lead Quantity/Wire Size: | 9 @ 8 AWG                   |
|                                 | 230.0 V @ 60 HZ         | Motor Lead Exit:               | Ko Box                      |
| XP Class and Group:             | CLI GP A,B,C,D          | Motor Lead Termination:        | Flying Leads                |
| XP Division:                    | Division II             | Motor Type:                    | 1260M                       |
| Agency Approvals:               | UR                      | Mounting Arrangement:          | F1                          |
|                                 | CSA EEV                 | Power Factor:                  | 79                          |
|                                 | CSA                     | Product Family:                | Super-E Chemical Processing |
| Auxillary Box:                  | No Auxillary Box        | Pulley End Bearing Type:       | Ball                        |
| Auxillary Box Lead Termination: | None                    | Pulley Face Code:              | C-Face                      |
| Base Indicator:                 | No Mounting             | Pulley Shaft Indicator:        | Standard                    |
| Bearing Grease Type:            | Polyrex EM (-20F +300F) | Rodent Screen:                 | None                        |
| Blower:                         | None                    | Shaft Extension Location:      | Pulley End                  |

|                                       |                           |                                    |                     |
|---------------------------------------|---------------------------|------------------------------------|---------------------|
| <b>Constant Torque Speed Range:</b>   | 1.0                       | <b>Shaft Ground Indicator:</b>     | No Shaft Grounding  |
| <b>Current @ Voltage:</b>             | 32.000 A @ 460.0 V        | <b>Shaft Rotation:</b>             | Reversible          |
|                                       | 63.000 A @ 230.0 V        | <b>Shaft Slinger Indicator:</b>    | Shaft Slinger       |
|                                       | 69.000 A @ 208.0 V        | <b>Speed Code:</b>                 | Single Speed        |
| <b>Design Code:</b>                   | A                         | <b>Motor Standards:</b>            | NEMA                |
| <b>Drip Cover:</b>                    | Drip Cover                | <b>Starting Method:</b>            | Direct on line      |
| <b>Duty Rating:</b>                   | CONT                      | <b>Thermal Device - Bearing:</b>   | None                |
| <b>Electrically Isolated Bearing:</b> | Not Electrically Isolated | <b>Thermal Device - Winding:</b>   | None                |
| <b>Feedback Device:</b>               | NO FEEDBACK               | <b>Vibration Sensor Indicator:</b> | No Vibration Sensor |
| <b>Front Face Code:</b>               | Standard                  | <b>Winding Thermal 1:</b>          | None                |
| <b>Front Shaft Indicator:</b>         | None                      | <b>Winding Thermal 2:</b>          | None                |
|                                       |                           | <b>XP Temp Code:</b>               | T3                  |

| Nameplate NP3241 |              |                    |      |           |            |                         |      |            |      |          |    |
|------------------|--------------|--------------------|------|-----------|------------|-------------------------|------|------------|------|----------|----|
| CAT.NO.          | VECP4111T    | P/N                |      | ENCLOSURE | TEFC       |                         |      |            |      |          |    |
| SPEC.            | 12E914Y116   | CC                 | 010A | FRAME     | 324TC      | S/N                     |      |            |      |          |    |
| HP               | 25           | CLASS              | F    | HZ        | 60         | DES                     | A    |            |      |          |    |
| RPM              | 1180         | RPM MAX            | 1800 | PH        | 3          | KVA-CODE                | H    |            |      |          |    |
| VOLT             | 230/460      | MOTOR WEIGHT       | 605  |           |            |                         |      |            |      |          |    |
| AMP              | 63/32        | SER.F.             | 1.15 | PF        | 79         | ODE BRG                 | 6312 | DE BRG     | 6312 |          |    |
| RATING           | 40C AMB-CONT | NEMA-NOM-EFF       | 93   | GREASE    | POLYREX EM |                         |      |            |      |          |    |
|                  |              |                    |      | INV.TYPE  | PWM        |                         |      |            |      |          |    |
| TEMP CODE        | T3           | INVERTER-TEMP-CODE | 200  |           |            |                         |      |            |      |          |    |
| TEMP =           | 200          | C HP FR            | 60   | C HP TO   | 90         |                         |      |            |      |          |    |
| CT HZ FROM       | 1.0          | CT HZ TO           | 60   |           |            |                         |      |            |      |          |    |
| HTR-VOLTS        |              | HTR-AMPS           |      | HTR-WATTS |            | MAX. SPACE HEATER TEMP. |      | VT HZ FROM | 0    | VT HZ TO | 60 |

| Parts List    |  |          |
|---------------|--|----------|
| Part Number   | Description                              | Quantity |
| SA225057      | SA 12E914Y116                            | 1.000 EA |
| RA212155      | RA 12E914Y116                            | 1.000 EA |
| 09FN3001B03SP | EXTERNAL FAN, PLASTIC (COMES W/SCREW FRO | 1.000 EA |
| 10CB1000A04P  | KO BOX, MACH W/2.00 NPT W/EPOXY PRIMER   | 1.000 EA |
| 09GS1010      | GASKET, DWG, LEADWIRE SEPERATOR          | 1.000 EA |
| 10XN3118K16   | 5/16-18 X 1' GRADE #5, STL, ZINC PLATE   | 4.000 EA |
| HW1001A31     | LOCKWASHER 5/16, ZINC PLT.591 OD, .319 I | 4.000 EA |
| WD1000B16     | T&B CX70TN OR L70P TERMINAL LUG          | 1.000 EA |
| 10XN2520K08   | 1/4-20 X .50 GRADE #5, STL, ZINC PLATE   | 1.000 EA |
| HW1001A25     | LOCKWASHER 1/4, ZINC PLT .493 OD, .255 I | 1.000 EA |
| HA4017A10     | 1/8X1.25 GREASE EXT (F/S)                | 1.000 EA |
| HW4019A01     | PIPE COUPLING 1/8 NPT,STEEL,ZINC COATING | 1.000 EA |
| HA4017A01     | 1/8 X 4 GREASE EXT (F/S)                 | 1.000 EA |
| HA3400A13     | STUD, 1/2-13 X 7" WELKER                 | 4.000 EA |
| HW1001A50     | LOCKWASHER 1/2, ZINC PLT.,879 OD, .509 I | 4.000 EA |
| HW4600B41     | V-RING SLINGER 2.125 X 2.880 X 0.280     | 1.000 EA |
| HA1005A04     | SLINGER, OD 3.620, ID 1.98,              | 1.000 EA |
| HW5100A15     | W4997-050 WVY WSHR (WB)                  | 1.000 EA |
| 10XN3118K40   | 5/16-18 X 2.50" HEX HD, GRADE 5          | 2.000 EA |
| 12EP1105A01P  | PU EP, MACH W/EPOXY PRIMER               | 1.000 EA |
| 10XN5013K28   | 1/2-13 X 1.75 HEX HEAD MACH SCREW,GRAD   | 4.000 EA |
| HW1001A50     | LOCKWASHER 1/2, ZINC PLT.,879 OD, .509 I | 4.000 EA |
| 10XN3118K40   | 5/16-18 X 2.75" HEX HD, GRADE 5          | 4.000 EA |
| 12FH1500A01P  | MACH DRIP COVER 310-312 MTRS             | 1.000 EA |

| Parts List (continued) |   |          |
|------------------------|---|----------|
| Part Number            | Description                               | Quantity |
| 10XN3816K36            | 3/8-16 X 2.25 HEX HD CAP SCREW, GRADE 5   | 4.000 EA |
| HW1001A38              | LOCKWASHER 3/8, ZINC PLT .688 OD, .382 I  | 4.000 EA |
| 12FH1002A34P           | FAN COVER, MACH ,EPOXY PRIMER             | 1.000 EA |
| HW1001A50              | LOCKWASHER 1/2, ZINC PLT, .879 OD, .509 I | 4.000 EA |
| XY5013A12              | NUT, 1/2-13, HEX, STEEL, ZINC PLATED      | 4.000 EA |
| 10CB1503A01P           | CONDUIT BOX LIPPED LID, MACH W/EPXY PRMR  | 1.000 EA |
| 14GS1003               | GASKET CONDUIT BOX LID, NEOP              | 1.000 EA |
| 10XN2520K16            | 1/4-20 X 1" HX HD SCRW GRADE 5, ZINC P    | 4.000 EA |
| HW1001A25              | LOCKWASHER 1/4, ZINC PLT .493 OD, .255 I  | 4.000 EA |
| HW2501H33              | KEY, 1/2 SQ X 3.875                       | 1.000 EA |
| MJ5001A27              | 32220KN GRAY SEALER *MIN BUY 4 QTS=1GAL   | 0.031 QT |
| MJ5002A01              | SILICON RUBBER SEALANT, 732CL 10.3 OZ TU  | 0.030 EA |
| LB1115N                | LABEL, LIFTING DEVICE (ON ROLLS)          | 1.000 EA |
| MN416A01               | TAG-INSTAL-MAINT no wire (2100/bx) 4/22   | 1.000 EA |
| LB1002N                | LABEL, MARINE DUTY (ON ROLLS)             | 1.000 EA |
| PK6014                 | STEEL STRAP FOR 309-312 BASELESS MOTORS   | 3.000 EA |
| 10XN5013K10            | 1/2-13 X .625 HEX HD, GRADE 5             | 3.000 EA |
| 12EP1111A04GP6         | FR ENDPLATE, MACH W/EPOXY PRIMER & RELIA  | 1.000 EA |
| HW4500A17              | 317400 ALEMITE GREASE RELIEF              | 1.000 EA |
| HW4500A21              | 1618BALEMITE FITTING 825 UNIVERSAL        | 1.000 EA |
| HA4051A00              | PLASTIC CAP FOR GREASE FITTING            | 1.000 EA |
| HA4054                 | SHORT T-DRAIN FITTING, .125" N.P.T.       | 1.000 EA |
| HA4054                 | SHORT T-DRAIN FITTING, .125" N.P.T.       | 1.000 EA |
| MJ1000A02              | GREASE, MOBIL POLYREX EM - 124047         | 0.200 LB |

Product Information Packet: VECP4111T - 25HP,1180RPM,3PH,60HZ,324TC,1260M,TEFC,F

|               |  |          |
|---------------|--|----------|
| HW4500A17     | 317400 ALEMITE GREASE RELIEF             | 1.000 EA |
| HW4500A03     | GREASE FITTING, .125 NPT 1610(ALEMITE) 8 | 1.000 EA |
| HA4051A00     | PLASTIC CAP FOR GREASE FITTING           | 1.000 EA |
| 09FN3001B03SP | EXTERNAL FAN, PLASTIC (COMES W/SCREW FRO | 1.000 EA |
| HW2500A25     | WOODRUFF KEY USA #1008 #BLOW CARBON STEE | 1.000 EA |
| MG1025N19     | WILKOFAS, 778.50, RELIANCE BLUE-GREEN    | 0.080 GA |
| 85XU0407S04   | 4X1/4 U DRIVE PIN STAINLESS              | 4.000 EA |
| LB1119N       | WARNING LABEL                            | 1.000 EA |
| LC0181        | CONNECTION LABEL                         | 1.000 EA |
| NP3241        | SS SUPER-E INV UL CSA-EEV PREM CC        | 1.000 EA |
| 10PA1010      | PACKAGING GROUP, PRINT PK1151A06         | 1.000 EA |
| LB1449        | DIV-2/NEC WARNING LABEL                  | 1.000 EA |
| PE-0000013    | ZRTG PE ASSEMBLY                         | 1.000 EA |

**AC Induction Motor Performance Data**

Record # 47247

Typical performance - not guaranteed values

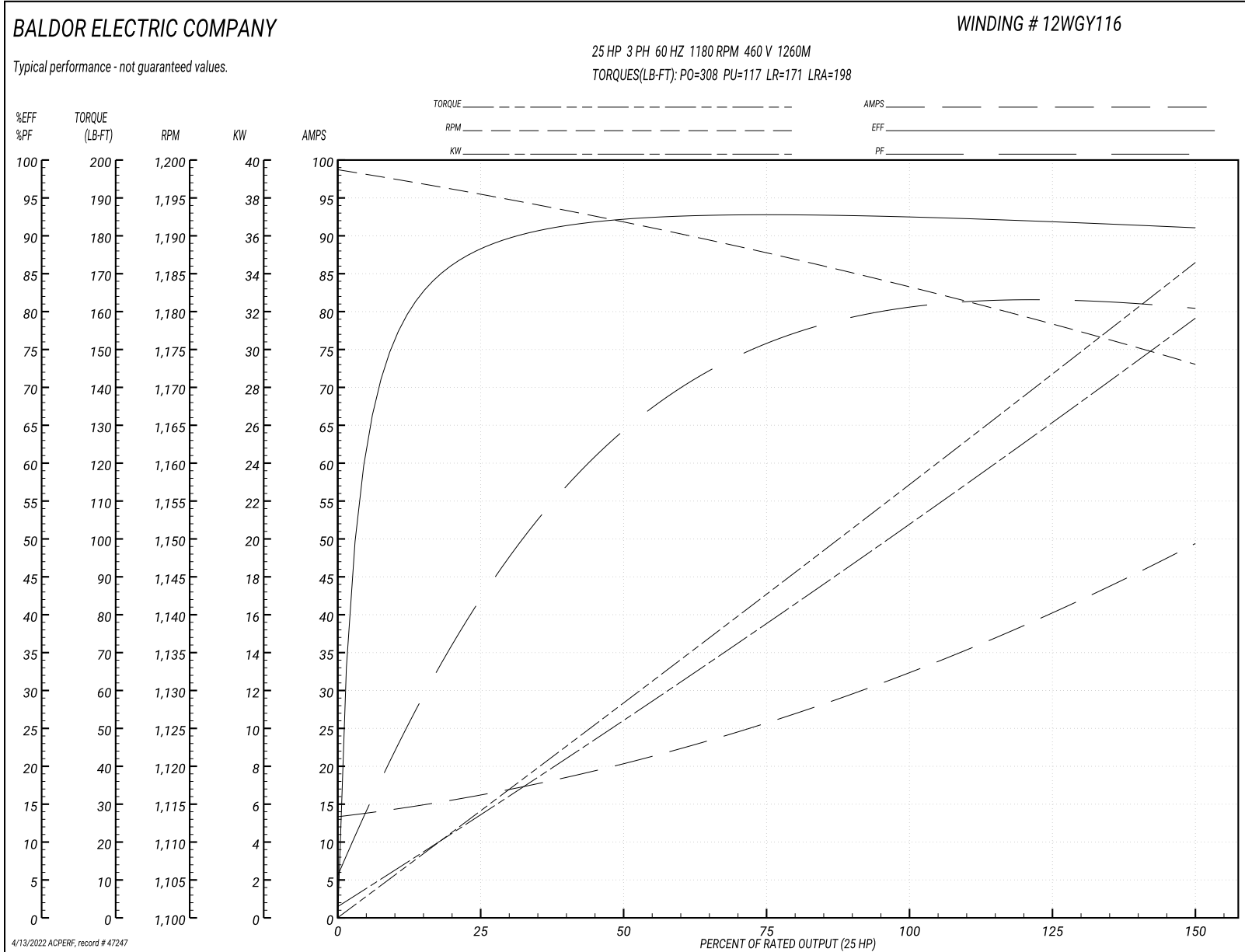
| <b>Winding: 12WGY116-R017</b> |                 | <b>Type: 1260M</b>         |  | <b>Enclosure: TEFC</b>       |           |
|-------------------------------|-----------------|----------------------------|--|------------------------------|-----------|
| <b>Nameplate Data</b>         |                 |                            | <b>460 V, 60 Hz:<br/>High Voltage Connection</b> |                              |           |
| <b>Rated Output (HP)</b>      | 25              | <b>Full Load Torque</b>    | 111 LB-FT  |                              |           |
| <b>Volts</b>                  | 230/460         | <b>Start Configuration</b> | direct on line                                   |                              |           |
| <b>Full Load Amps</b>         | 63/32           | <b>Breakdown Torque</b>    | 308 LB-FT  |                              |           |
| <b>R.P.M.</b>                 | 1180            | <b>Pull-up Torque</b>      | 117 LB-FT  |                              |           |
| <b>Hz</b>                     | 60 <b>Phase</b> | 3                          | <b>Locked-rotor Torque</b>                       | 171 LB-FT                    |           |
| <b>NEMA Design Code</b>       | A               | <b>KVA Code</b>            | H  | <b>Starting Current</b>      | 198 A     |
| <b>Service Factor (S.F.)</b>  | 1.15            |                            | <b>No-load Current</b>                           | 13.8 A                       |           |
| <b>NEMA Nom. Eff.</b>         | 93              | <b>Power Factor</b>        | 79   | <b>Line-line Res. @ 25°C</b> | 0.27033 Ω |
| <b>Rating - Duty</b>          | 40C AMB-CONT    |                            | <b>Temp. Rise @ Rated Load</b>                   | 46°C                         |           |
| <b>S.F. Amps</b>              |                 |                            | <b>Temp. Rise @ S.F. Load</b>                    | 56°C                         |           |
|                               |                 |                            | <b>Rotor inertia</b>                             | 11.5 LB-FT <sup>2</sup>      |           |

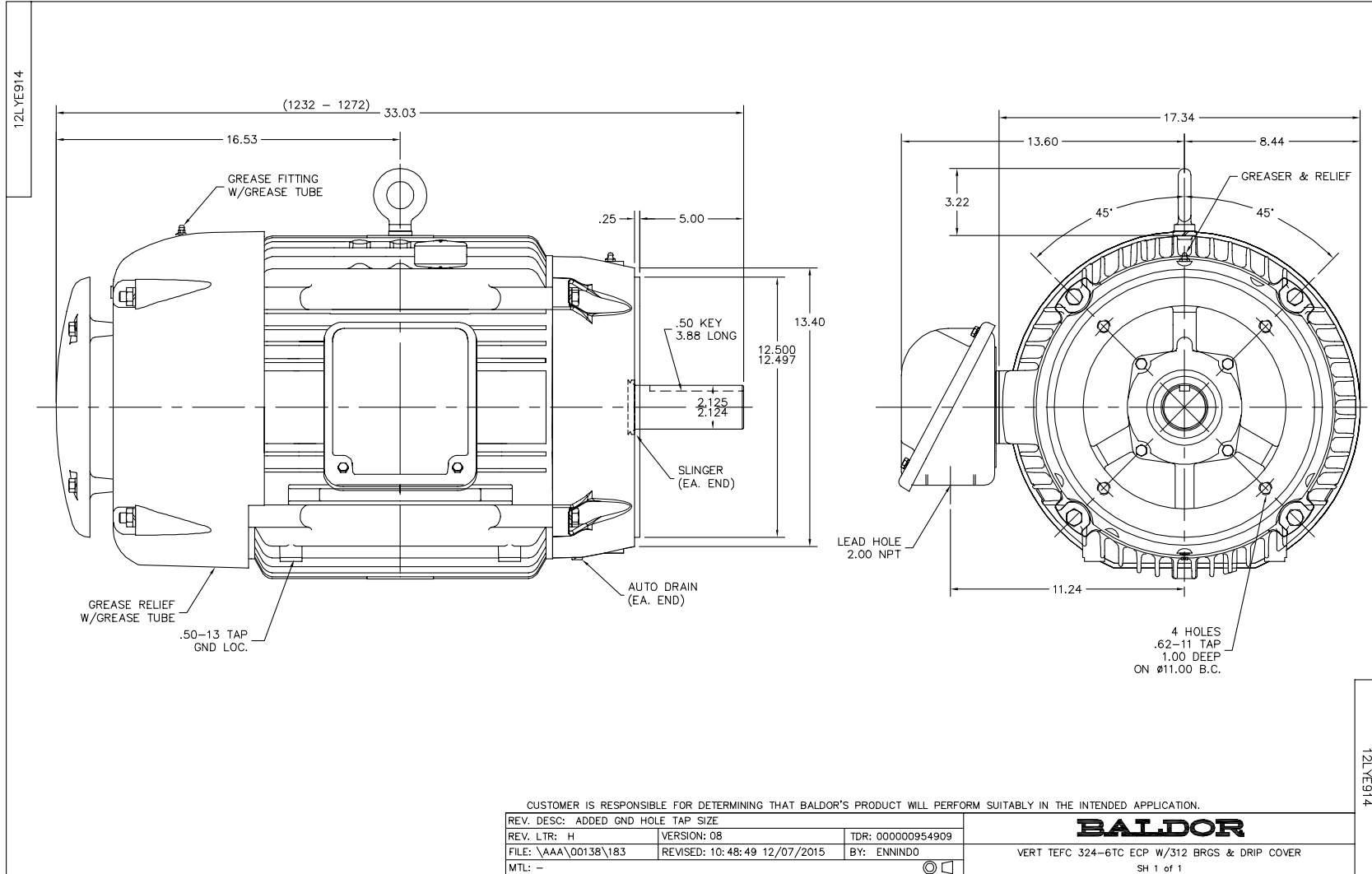
**Load Characteristics 460 V, 60 Hz, 25 HP**

| <b>% of Rated Load</b> | <b>25</b> | <b>50</b> | <b>75</b> | <b>100</b> | <b>125</b> | <b>150</b> | <b>S.F.</b> |
|------------------------|-----------|-----------|-----------|------------|------------|------------|-------------|
| <b>Power Factor</b>    | 43        | 65        | 75        | 79         | 81         | 81         | 80          |
| <b>Efficiency</b>      | 89.1      | 92.8      | 93.5      | 93.2       | 92.6       | 91.5       | 92.8        |
| <b>Speed</b>           | 1195.4    | 1191.8    | 1188.2    | 1183.9     | 1179.3     | 1172.9     | 1181        |
| <b>Line amperes</b>    | 15.6      | 19.7      | 25.4      | 31.9       | 39.2       | 49.1       | 36.3        |

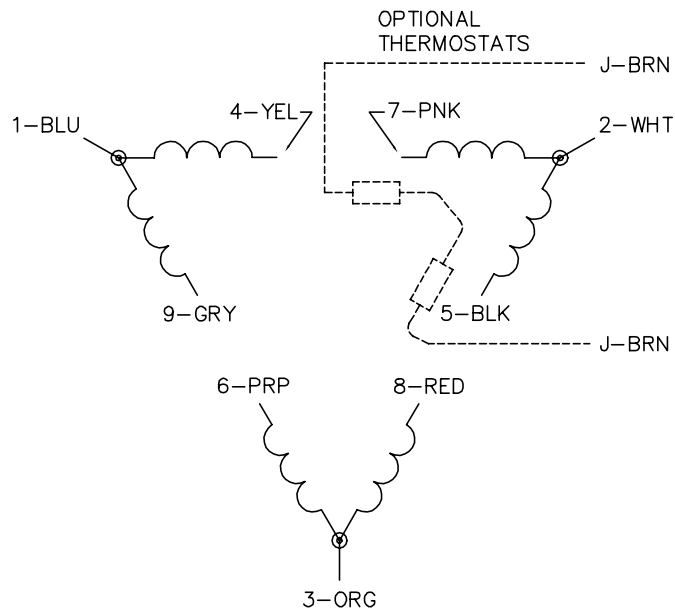


Performance Graph at 460V, 60Hz, 25.0HP Typical performance - Not guaranteed values

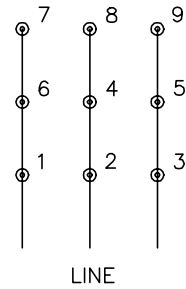




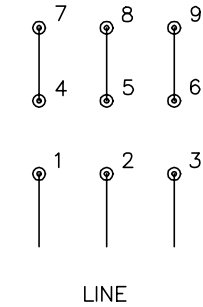
CD0180



LOW VOLTAGE  
(2D)



HIGH VOLTAGE  
(1D)



NOTES:

1. INTERCHANGE ANY TWO LINE LEADS TO REVERSE ROTATION.
2. OPTIONAL THERMOSTATS ARE PROVIDED WHEN SPECIFIED.
3. ACTUAL NUMBER OF INTERNAL PARALLEL CIRCUITS MAY BE A MULTIPLE OF THOSE SHOWN ABOVE.
4. LEAD COLORS ARE OPTIONAL. LEADS MUST ALWAYS BE NUMBERED AS SHOWN.

CD0180

|                                   |                              |                   |
|-----------------------------------|------------------------------|-------------------|
| REV. DESC: ADD CLASS CONN00000007 |                              |                   |
| REV. LTR: D                       | VERSION: 01                  | TDR: 000001099922 |
| FILE: \AAA\00005\148              | REVISED: 10:25:29 02/19/2019 | BY: ENBRIRO       |
| MTL: -                            | © □                          |                   |

**BALDOR - RELIANCE®**

3PH, DV, 9 LEADS, DELTA CONNECTION

SH 1 of 1

Marketing maintained PDF of MN416:

<http://www.baldor.com/support/Literature/Load.ashx/MN416?ManNumber=MN416>