

BALDOR® • RELIANCE 

Product Information Packet

VEJMM3116T-5

1HP,1750RPM,3PH,60HZ,143JM,3524M,OPEN,F1

| Part Detail | | | | | | | |
|-------------|--------|-------------|------------|-------------|--------|---------------|----|
| Revision: | Z | Status: | PRD/A | Change #: | | Proprietary: | No |
| Type: | AC | Elec. Spec: | 35WGS494 | CD Diagram: | CD0006 | Mfg Plant: | |
| Mech. Spec: | 35E422 | Layout: | 35LYE422 | Poles: | 04 | Created Date: | |
| Base: | N | Eff. Date: | 07-15-2020 | Leads: | 3#18 | | |

| Specs | | | |
|---------------------------------|-------------------------|--------------------------------|--------------------|
| Catalog Number: | VEJMM3116T-5 | Inverter Code: | Inverter Ready |
| Enclosure: | OPEN | KVA Code: | L |
| Frame: | 143JM | Lifting Lugs: | No Lifting Lugs |
| Frame Material: | Steel | Locked Bearing Indicator: | Locked Bearing |
| Output @ Frequency: | 1.000 HP @ 60 HZ | Motor Lead Quantity/Wire Size: | 3 @ 18 AWG |
| Synchronous Speed @ Frequency: | 1800 RPM @ 60 HZ | Motor Lead Exit: | Ko Box |
| Voltage @ Frequency: | 575.0 V @ 60 HZ | Motor Lead Termination: | Flying Leads |
| XP Class and Group: | None | Motor Type: | 3524M |
| XP Division: | Not Applicable | Mounting Arrangement: | F1 |
| Agency Approvals: | CSA | Power Factor: | 78 |
| | CSA EEV | Product Family: | General Purpose |
| | UR | Pulley End Bearing Type: | Ball |
| Auxillary Box: | No Auxillary Box | Pulley Face Code: | C-Face |
| Auxillary Box Lead Termination: | None | Pulley Shaft Indicator: | Tapped & Key |
| Base Indicator: | No Mounting | Rodent Screen: | Included |
| Bearing Grease Type: | Polyrex EM (-20F +300F) | Shaft Extension Location: | Pulley End |
| Blower: | None | Shaft Ground Indicator: | No Shaft Grounding |
| Current @ Voltage: | 1.100 A @ 575.0 V | Shaft Rotation: | Reversible |

| | | | |
|---------------------------------------|---------------------------|------------------------------------|---------------------|
| Design Code: | B | Shaft Slinger Indicator: | Shaft Slinger |
| Drip Cover: | Drip Cover | Speed Code: | Single Speed |
| Duty Rating: | CONT | Motor Standards: | NEMA |
| Electrically Isolated Bearing: | Not Electrically Isolated | Starting Method: | Direct on line |
| Feedback Device: | NO FEEDBACK | Thermal Device - Bearing: | None |
| Front Face Code: | Drip Cover Mounting | Thermal Device - Winding: | None |
| Front Shaft Indicator: | None | Vibration Sensor Indicator: | No Vibration Sensor |
| Heater Indicator: | No Heater | Winding Thermal 1: | None |
| Insulation Class: | F | Winding Thermal 2: | None |

| Nameplate NP1259L | | | | | | | | | | |
|-------------------|-----------------------|--|------|----|----------------|------|--|----|----|---|
| CAT.NO. | VEJMM3116T-5 | | | | | | | | | |
| SPEC. | 35E422S494G1 | | | | | | | | | |
| HP | 1 | | | | | | | | | |
| VOLTS | 575 | | | | | | | | | |
| AMP | 1.1 | | | | | | | | | |
| RPM | 1750 | | | | | | | | | |
| FRAME | 143JM | | | | HZ | 60 | | | PH | 3 |
| SER.F. | 1.15 | | CODE | L | DES | B | | CL | F | |
| NEMA-NOM-EFF | 86.5 | | PF | 78 | | | | | | |
| RATING | 40C AMB-CONT | | | | | | | | | |
| CC | 010A | | | | USABLE AT 208V | | | | | |
| DE | 6206 | | | | ODE | 6203 | | | | |
| ENCL | OPEN | | SN | | | | | | | |
| | INVERTER DUTY 20:1 VT | | | | | | | | | |

| Parts List | | |
|-------------|--|----------|
| Part Number | Description | Quantity |
| SA067295 | SA 35E422S494G1 | 1.000 EA |
| RA061333 | RA 35E422S494G1 | 1.000 EA |
| NS2512A01 | INSULATOR, CONDUIT BOX X | 1.000 EA |
| 35CB3007 | 35 CB CASTING W/.88 DIA. LEAD HOLE | 1.000 EA |
| 51XB1016A07 | 10-16 X 7/16 HXWSSLD SERTYB | 2.000 EA |
| 11XW1032G06 | 10-32 X .38, TAPTITE II, HEX WSHR SLTD U | 1.000 EA |
| 35EP3209C00 | MASTER ODE,203 BRG,.683SH,GRSR@6,DRIP CV | 1.000 EA |
| HA1100A03 | SCREEN, RODENT | 1.000 EA |
| 51XT1032A04 | 10-32X1/4 HX WA SL SR TYT (F/S) | 4.000 EA |
| HW1000A10 | #10 FLAT WASHER (SAE) | 4.000 EA |
| HW4500A01 | 1641B(ALEMITE)400 UNIV, GREASE FITT | 1.000 EA |
| HW5100A03 | WAVY WASHER (W1543-017) | 1.000 EA |
| 35EP3401A05 | B/OPEN FACE MTD. ENDPLATE 35 FRAME 206 B | 1.000 EA |
| 35AD2001 | AIR BAFFLE | 1.000 EA |
| 15XF0632A06 | 6-32 X 3/8 PHILL PAN HD TYPE F | 4.000 EA |
| HA1102A08 | RODENT SCREEN 35 OPEN FACE MTD | 1.000 EA |
| 51XT1032A04 | 10-32X1/4 HX WA SL SR TYT (F/S) | 4.000 EA |
| HW1000A10 | #10 FLAT WASHER (SAE) | 4.000 EA |
| HW4500A01 | 1641B(ALEMITE)400 UNIV, GREASE FITT | 1.000 EA |
| 51XN1032A16 | 10-32 X 1.000 HX WS SL SR | 2.000 EA |
| 35FH4006A04 | DRIP COVER SPECIAL, W/ PRIMER | 1.000 EA |
| 51XW1032A06 | 10-32 X .38, TAPTITE II, HEX WSHR SLTD S | 3.000 EA |
| 35CB4521 | 35 LIPPED CB LID (GALV & PHOSPH) | 1.000 EA |
| 51XW0832A07 | 8-32 X .44, TAPTITE II, HEX WSHR SLTD SE | 4.000 EA |

| Parts List (continued) | | |
|-------------------------------|---|-----------------|
| Part Number | Description | Quantity |
| HA1005A02 | SLINGER, OD 2.00, ID 1.14, 206 BRG, | 1.000 EA |
| HW2501D13 | KEY, 3/16 SQ X 1.375 | 1.000 EA |
| HA7000A01 | KEY RETAINER 7/8" DIA SHAFT | 1.000 EA |
| 85XU0407S04 | 4X1/4 U DRIVE PIN STAINLESS | 2.000 EA |
| MJ1000A02 | GREASE, MOBIL POLYREX EM - 124047 | 0.050 LB |
| 35FN3002A05SP | EXFN, PLASTIC, 6.376 OD, .638 ID | 1.000 EA |
| 51XB1214A16 | 12-14X1.00 HXWSSLD SERTYB | 1.000 EA |
| MG1000Y03 | MUNSELL 2.53Y 6.70/ 4.60, GLOSS 20, | 0.017 GA |
| HA3100A15 | THRUBOLT 10-32 X 8.375 | 4.000 EA |
| LB1119N | WARNING LABEL | 1.000 EA |
| NP1259L | ALUM SUPER-E UL CSA-EEV CC NEMA PREMIUM | 1.000 EA |
| 36PA1000 | PKG GRP, PRINT PK1016A06 | 1.000 EA |
| PK3082 | STYROFOAM CRADLE | 1.000 EA |
| MN416A01 | TAG-INSTAL-MAINT no wire (2100/bx) 4/22 | 1.000 EA |
| LB1417 | LABEL CARTON 6X4 PERFORATED BLANK ROLLS | 1.000 EA |
| FE-0000001 | ZRTG FE ASSEMBLY | 1.000 EA |

AC Induction Motor Performance Data

Record # 9032

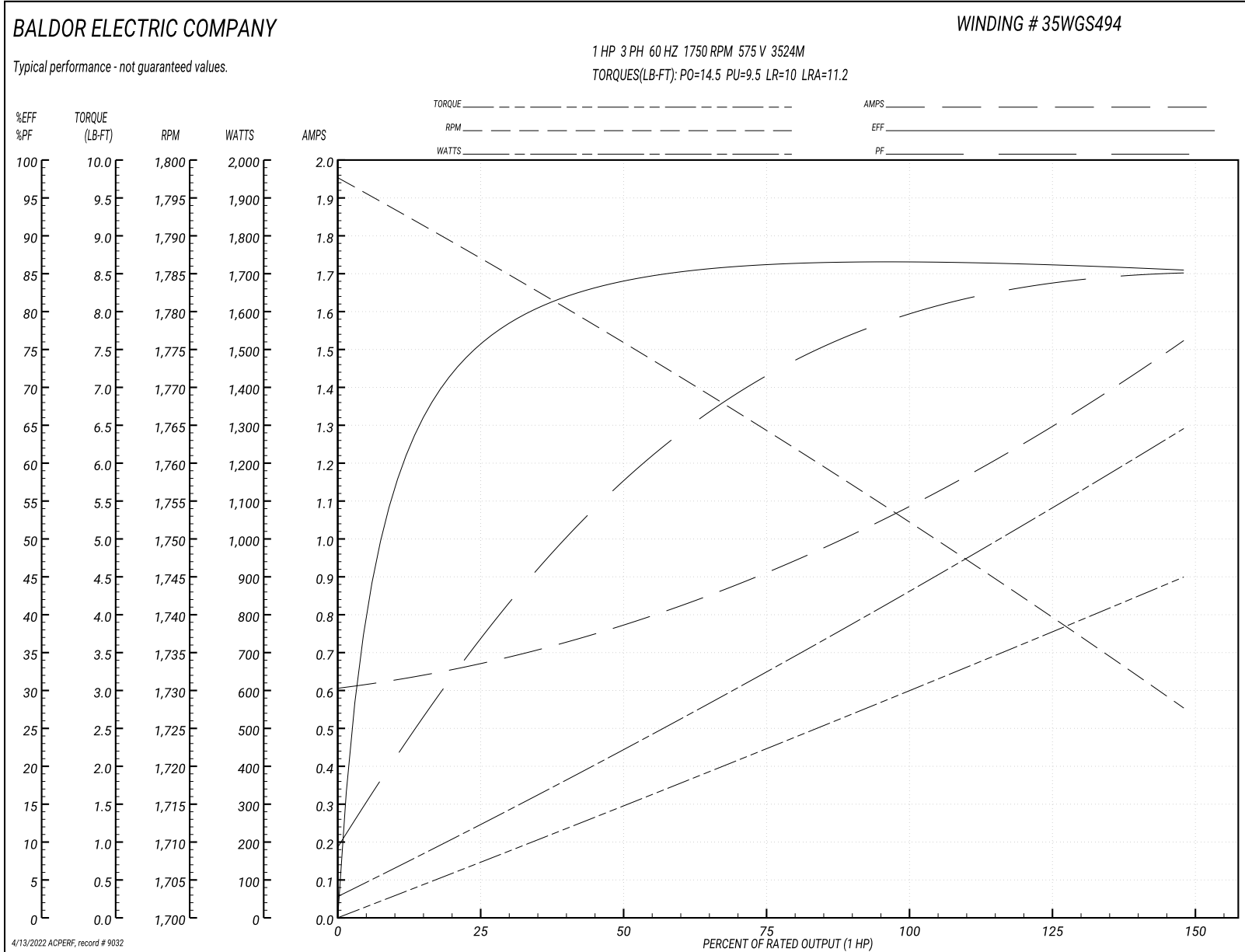
Typical performance - not guaranteed values

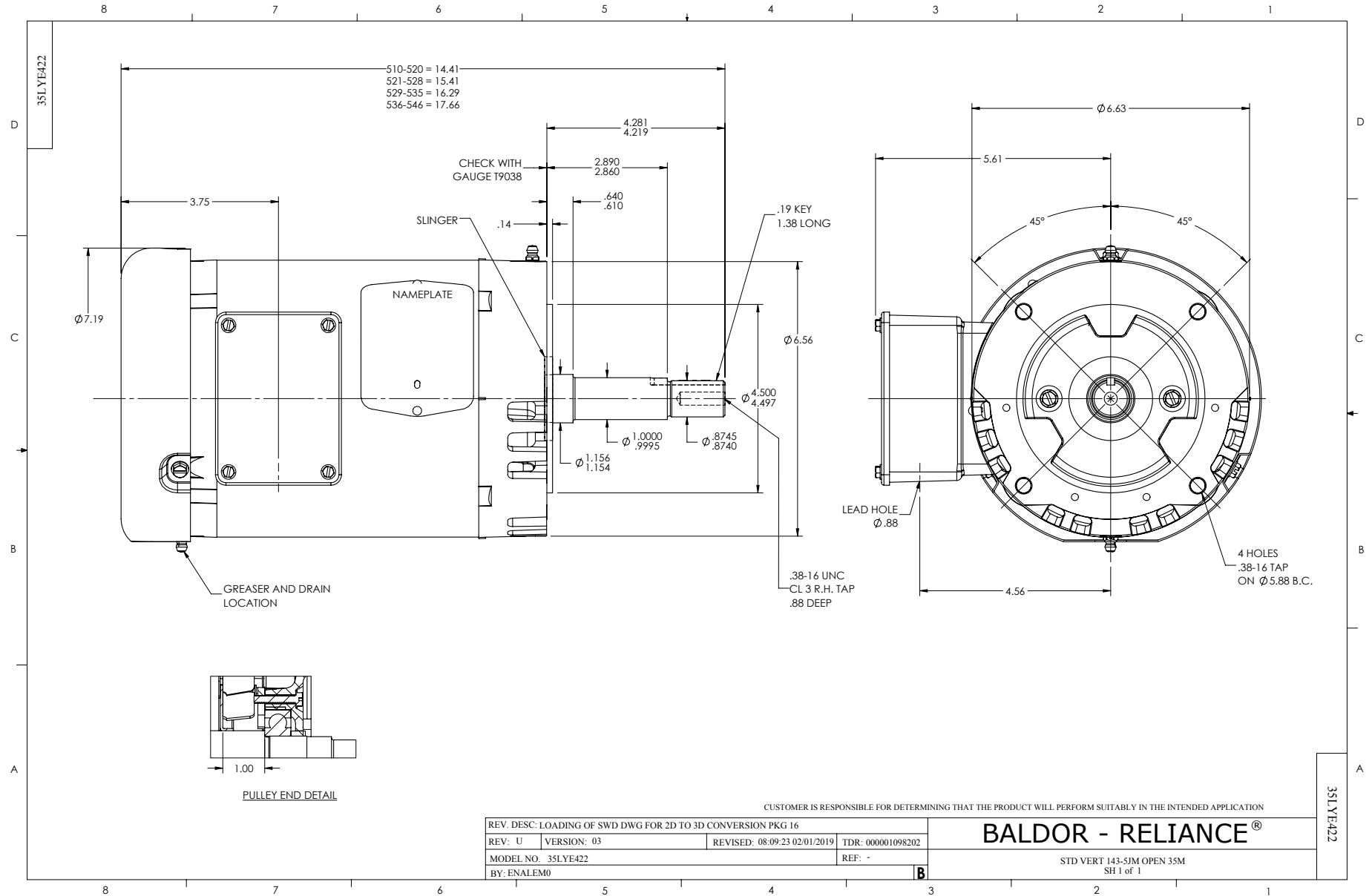
| Winding: 35WGS494-R004 | | Type: 3524M | | Enclosure: TEFC | |
|-------------------------------|-------------------|----------------------------|---|------------------------------|---------|
| Nameplate Data | | | 575 V, 60 Hz: Single Voltage Motor | | |
| Rated Output (HP) | 1 | Full Load Torque | 3 LB-FT | | |
| Volts | 575 | Start Configuration | direct on line | | |
| Full Load Amps | 1.1 | Breakdown Torque | 14.5 LB-FT | | |
| R.P.M. | 1750 | Pull-up Torque | 9.5 LB-FT | | |
| Hz | 60 Phase | 3 | Locked-rotor Torque | 10 LB-FT | |
| NEMA Design Code | B KVA Code | L | Starting Current | 11.2 A | |
| Service Factor (S.F.) | 1.15 | No-load Current | 0.61 A | | |
| NEMA Nom. Eff. | 86.5 | Power Factor | 78 | Line-line Res. @ 25°C | 24.87 Ω |
| Rating - Duty | 40C AMB-CONT | | Temp. Rise @ Rated Load | 27°C | |
| S.F. Amps | | | Temp. Rise @ S.F. Load | 31°C | |
| | | | Locked-rotor Power Factor | 62 | |
| | | | Rotor inertia | 0.142 LB-FT ² | |

Load Characteristics 575 V, 60 Hz, 1 HP

| % of Rated Load | 25 | 50 | 75 | 100 | 125 | 150 | S.F. |
|------------------------|-----------|-----------|-----------|------------|------------|------------|-------------|
| Power Factor | 39 | 58 | 72 | 79 | 85 | 86 | 0 |
| Efficiency | 75.8 | 83.8 | 86.2 | 86.6 | 86.5 | 85.3 | 0 |
| Speed | 1786 | 1777 | 1762 | 1753 | 1741 | 1727 | 0 |
| Line amperes | 0.67 | 0.77 | 0.91 | 1.1 | 1.29 | 1.52 | 1.22 |

Performance Graph at 575V, 60Hz, 1.0HP Typical performance - Not guaranteed values





CD0006



NOTES:

1. THREE LEAD MOTOR MAY BE EITHER WYE CONNECTED OR DELTA CONNECTED.
2. INTERCHANGE ANY TWO LINE LEADS TO REVERSE ROTATION.
3. OPTIONAL THERMOSTATS ARE PROVIDED WHEN SPECIFIED.
4. ACTUAL NUMBER OF INTERNAL PARALLEL CIRCUITS MAY VARY.
5. LEAD COLORS ARE OPTIONAL. LEADS MUST BE NUMBERED AS SHOWN.

CD0006

| | | |
|-----------------------------------|------------------------------|-------------------|
| REV. DESC: ADD CLASS CONN00000007 | | |
| REV. LTR: E | VERSION: 01 | TDR: 000001099922 |
| FILE: \AAA\00005\141 | REVISED: 10:24:49 02/19/2019 | BY: ENBRIRO |
| MTL: - | © □ | |

BALDOR - RELIANCE®

3PH, SV, 3 LEADS, WYE OR DELTA CONNECTED

SH 1 of 1