

**BALDOR® • RELIANCE** 

**Product Information Packet**

**VEM3557T**

**1.5HP, 1165RPM, 3PH, 60HZ, 145TC, 3632M, TEFC**

| Part Detail |        |             |            |             |        |               |            |
|-------------|--------|-------------|------------|-------------|--------|---------------|------------|
| Revision:   | D      | Status:     | PRD/A      | Change #:   |        | Proprietary:  | No         |
| Type:       | AC     | Elec. Spec: | 36WGS916   | CD Diagram: | CD0005 | Mfg Plant:    |            |
| Mech. Spec: | 36J231 | Layout:     | 36LYJ231   | Poles:      | 06     | Created Date: | 04-29-2015 |
| Base:       | N      | Eff. Date:  | 04-08-2021 | Leads:      | 9#16   |               |            |

| Specs                           |                         |                                |                 |
|---------------------------------|-------------------------|--------------------------------|-----------------|
| Catalog Number:                 | VEM3557T                | Heater Indicator:              | No Heater       |
| Enclosure:                      | TEFC                    | Insulation Class:              | F               |
| Frame:                          | 145TC                   | Inverter Code:                 | Inverter Ready  |
| Frame Material:                 | Steel                   | KVA Code:                      | K               |
| Output @ Frequency:             | 1.500 HP @ 60 HZ        | Lifting Lugs:                  | No Lifting Lugs |
| Synchronous Speed @ Frequency:  | 1200 RPM @ 60 HZ        | Locked Bearing Indicator:      | Locked Bearing  |
| Voltage @ Frequency:            | 460.0 V @ 60 HZ         | Motor Lead Quantity/Wire Size: | 9 @ 16 AWG      |
|                                 | 230.0 V @ 60 HZ         | Motor Lead Exit:               | Ko Box          |
| XP Class and Group:             | None                    | Motor Lead Termination:        | Flying Leads    |
| XP Division:                    | Not Applicable          | Motor Type:                    | 3632M           |
| Agency Approvals:               | UR                      | Mounting Arrangement:          | F1              |
|                                 | CSA EEV                 | Power Factor:                  | 67              |
|                                 | CSA                     | Product Family:                | General Purpose |
| Auxillary Box:                  | No Auxillary Box        | Pulley End Bearing Type:       | Ball            |
| Auxillary Box Lead Termination: | None                    | Pulley Face Code:              | C-Face          |
| Base Indicator:                 | No Mounting             | Pulley Shaft Indicator:        | Standard        |
| Bearing Grease Type:            | Polyrex EM (-20F +300F) | Rodent Screen:                 | None            |
| Blower:                         | None                    | Shaft Extension Location:      | Pulley End      |

|                                       |                           |                                    |                     |
|---------------------------------------|---------------------------|------------------------------------|---------------------|
| <b>Current @ Voltage:</b>             | 2.400 A @ 460.0 V         | <b>Shaft Ground Indicator:</b>     | No Shaft Grounding  |
|                                       | 4.800 A @ 230.0 V         | <b>Shaft Rotation:</b>             | Reversible          |
|                                       | 5.000 A @ 208.0 V         | <b>Shaft Slinger Indicator:</b>    | No Slinger          |
| <b>Design Code:</b>                   | B                         | <b>Speed Code:</b>                 | Single Speed        |
| <b>Drip Cover:</b>                    | No Drip Cover             | <b>Motor Standards:</b>            | NEMA                |
| <b>Duty Rating:</b>                   | CONT                      | <b>Starting Method:</b>            | Direct on line      |
| <b>Electrically Isolated Bearing:</b> | Not Electrically Isolated | <b>Thermal Device - Bearing:</b>   | None                |
| <b>Feedback Device:</b>               | NO FEEDBACK               | <b>Thermal Device - Winding:</b>   | None                |
| <b>Front Face Code:</b>               | Standard                  | <b>Vibration Sensor Indicator:</b> | No Vibration Sensor |
| <b>Front Shaft Indicator:</b>         | None                      | <b>Winding Thermal 1:</b>          | None                |
|                                       |                           | <b>Winding Thermal 2:</b>          | None                |

|                                  |              |  |             |            |                       |    |  |              |           |   |
|----------------------------------|--------------|--|-------------|------------|-----------------------|----|--|--------------|-----------|---|
| <b>Nameplate NP3441LUA</b>       |              |  |             |            |                       |    |  |              |           |   |
| <b>CAT.NO.</b>                   | VEM3557T     |  |             |            |                       |    |  |              |           |   |
| <b>SPEC</b>                      | 36J231S916G1 |  |             |            |                       |    |  |              |           |   |
| <b>HP</b>                        | 1.5          |  |             |            |                       |    |  |              |           |   |
| <b>VOLTS</b>                     | 230/460      |  |             |            |                       |    |  |              |           |   |
| <b>AMPS</b>                      | 4.8/2.4      |  |             |            |                       |    |  |              |           |   |
| <b>RPM</b>                       | 1165         |  |             |            |                       |    |  |              |           |   |
| <b>FRAME</b>                     | 145TC        |  |             |            | <b>HZ</b>             | 60 |  |              | <b>PH</b> | 3 |
| <b>SF</b>                        | 1.15         |  | <b>CODE</b> | K          | <b>DES</b>            | B  |  | <b>CLASS</b> | F         |   |
| <b>NEMA NOM. EFF</b>             | 87.5         |  | <b>PF</b>   | 67         |                       |    |  |              |           |   |
| <b>RATING</b>                    | 40C AMB-CONT |  |             |            |                       |    |  |              |           |   |
| <b>CC</b>                        | 010A         |  |             |            | <b>USABLE AT 208V</b> |    |  |              |           | 5 |
| <b>ENCL</b>                      | TEFC         |  | <b>SER</b>  |            |                       |    |  |              |           |   |
| <b>DE</b>                        | 6206         |  |             | <b>ODE</b> | 6205                  |    |  |              |           |   |
| <b>VPWM INVERTER READY</b>       |              |  |             |            |                       |    |  |              |           |   |
| <b>CT6-60H(10:1)VT3-60H(20:1</b> |              |  |             |            |                       |    |  |              |           |   |
| 50Hz 1.5HP 190/380V 4.8/2.4A     |              |  |             |            |                       |    |  |              | SF1.0     |   |

| Parts List    |  |          |
|---------------|--|----------|
| Part Number   | Description                              | Quantity |
| SA300034      | SA 36J231S916G1                          | 1.000 EA |
| RA287080      | RA 36J231S916G1                          | 1.000 EA |
| 36FN3000C01SP | EXFN, PLASTIC, 5.25 OD, .912 ID          | 1.000 EA |
| 36CB3004      | 36 CB CASTING W/1.09 DIA LEAD HOLE @ 6:0 | 1.000 EA |
| 36GS1000SP    | GASKET-CONDUIT BOX, .06 THICK #SV-330 LE | 1.000 EA |
| 51XB1016A08   | 10-16X 1/2HXWSSLD SERTYB                 | 2.000 EA |
| 11XW1032G06   | 10-32 X .38, TAPTITE II, HEX WSHR SLTD U | 1.000 EA |
| HW3001B01     | BRASS CUP WASHER, FOR #10 SCREW          | 1.000 EA |
| 36EP3104A01   | FREP MACH ASSEMBLY FOR ROUTING           | 1.000 EA |
| HW4500A01     | 1641B(ALEMITE)400 UNIV, GREASE FITT      | 1.000 EA |
| HW5100A05     | WVY WSHR F/205 & 304 BRGS                | 1.000 EA |
| 36EP3303A03   | STD PU ENDPLATE -ENCL- 206 BRG W/OUT T-S | 1.000 EA |
| HW4500A01     | 1641B(ALEMITE)400 UNIV, GREASE FITT      | 1.000 EA |
| 10XN2520A24   | 1/4-20X 1 1/2 HEX HD X                   | 4.000 EA |
| HW1001A25     | LOCKWASHER 1/4, ZINC PLT .493 OD, .255 I | 4.000 EA |
| 51XB1214A16   | 12-14X1.00 HXWSSLD SERTYB                | 1.000 EA |
| 36FH4009A102  | IEC FH GREASER PRIMED                    | 1.000 EA |
| 51XW1032A06   | 10-32 X .38, TAPTITE II, HEX WSHR SLTD S | 3.000 EA |
| 36CB4516      | 750LIPPED CB LID - GALVANNEAL            | 1.000 EA |
| 37GS1001      | GASKET, CONDUIT BOX LID, .06 THICK LEXID | 1.000 EA |
| 51XW0832A07   | 8-32 X .44, TAPTITE II, HEX WSHR SLTD SE | 4.000 EA |
| HW2501D13     | KEY, 3/16 SQ X 1.375                     | 1.000 EA |
| HA7000A01     | KEY RETAINER 7/8" DIA SHAFT              | 1.000 EA |
| 85XU0407S04   | 4X1/4 U DRIVE PIN STAINLESS              | 2.000 EA |

| <b>Parts List (continued)</b> |  |                 |
|-------------------------------|--|-----------------|
| <b>Part Number</b>            | <b>Description</b>                       | <b>Quantity</b> |
| MJ1000A02                     | GREASE, MOBIL POLYREX EM - 124047        | 0.050 LB        |
| MG1000Y03                     | MUNSELL 2.53Y 6.70/ 4.60, GLOSS 20,      | 0.022 GA        |
| HA3101A25                     | THRUBOLT 1/4-20 X 11.000 OHIO ROD        | 4.000 EA        |
| LC0005E01                     | CONN.DIA./WARNING LABEL (LC0005/LB1119N) | 1.000 EA        |
| NP3441LUA                     | ALUM SUPER-E VPWM INV READY UL CSA-EEV C | 1.000 EA        |
| 36PA1001                      | PKG GRP, PRINT PK1017A06                 | 1.000 EA        |
| PK3082                        | STYROFOAM CRADLE                         | 1.000 EA        |
| MN416A01                      | TAG-INSTAL-MAINT no wire (2100/bx) 4/22  | 1.000 EA        |

**AC Induction Motor Performance Data**

Record # 38403

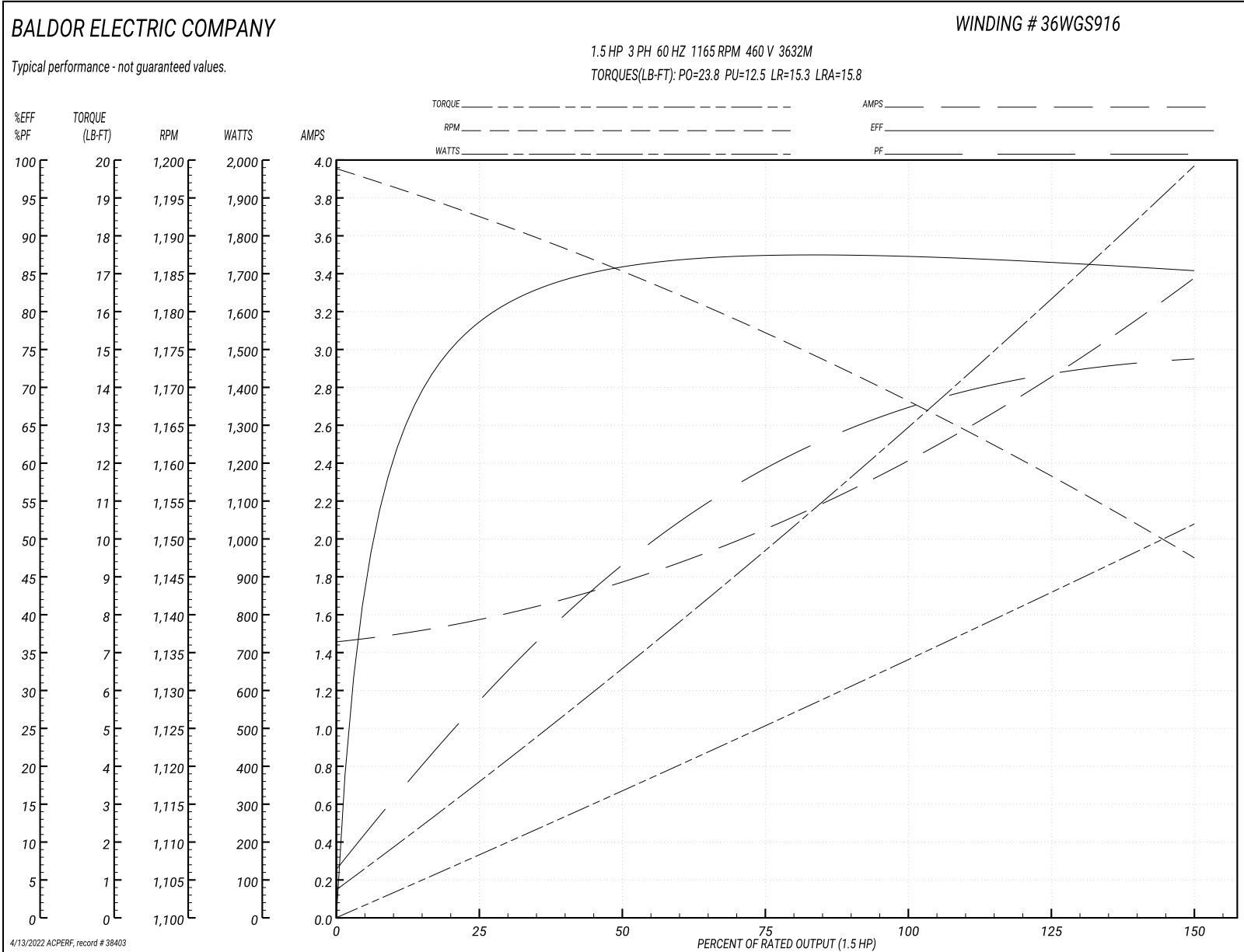
Typical performance - not guaranteed values

| <b>Winding: 36WGS916-R004</b> |                   | <b>Type: 3632M</b>         |  | <b>Enclosure: TEFC</b>       |          |  |
|-------------------------------|-------------------|----------------------------|--|------------------------------|----------|--|
| <b>Nameplate Data</b>         |                   |                            | <b>460 V, 60 Hz:<br/>High Voltage Connection</b> |                              |          |  |
| <b>Rated Output (HP)</b>      | 1.5               | <b>Full Load Torque</b>    | 6.86 LB-FT                                       |                              |          |  |
| <b>Volts</b>                  | 230/460           | <b>Start Configuration</b> | direct on line                                   |                              |          |  |
| <b>Full Load Amps</b>         | 4.8/2.4           | <b>Breakdown Torque</b>    | 23.8 LB-FT                                       |                              |          |  |
| <b>R.P.M.</b>                 | 1165              | <b>Pull-up Torque</b>      | 12.5 LB-FT                                       |                              |          |  |
| <b>Hz</b>                     | 60 <b>Phase</b>   | 3                          | <b>Locked-rotor Torque</b>                       | 15.3 LB-FT                   |          |  |
| <b>NEMA Design Code</b>       | <b>B KVA Code</b> | K                          | <b>Starting Current</b>                          | 15.8 A                       |          |  |
| <b>Service Factor (S.F.)</b>  | 1.15              | <b>No-load Current</b>     | 1.47 A   |                              |          |  |
| <b>NEMA Nom. Eff.</b>         | 87.5              | <b>Power Factor</b>        | 67   | <b>Line-line Res. @ 25°C</b> | 7.3716 Ω |  |
| <b>Rating - Duty</b>          | 40C               | <b>AMB-CONT</b>            | <b>Temp. Rise @ Rated Load</b>                   |                              | 34°C     |  |
| <b>S.F. Amps</b>              |                   |                            | <b>Temp. Rise @ S.F. Load</b>                    |                              | 41°C     |  |
|                               |                   |                            | <b>Locked-rotor Power Factor</b>                 | 30                           |          |  |
|                               |                   |                            | <b>Rotor inertia</b>                             | 0.301 LB-FT <sup>2</sup>     |          |  |

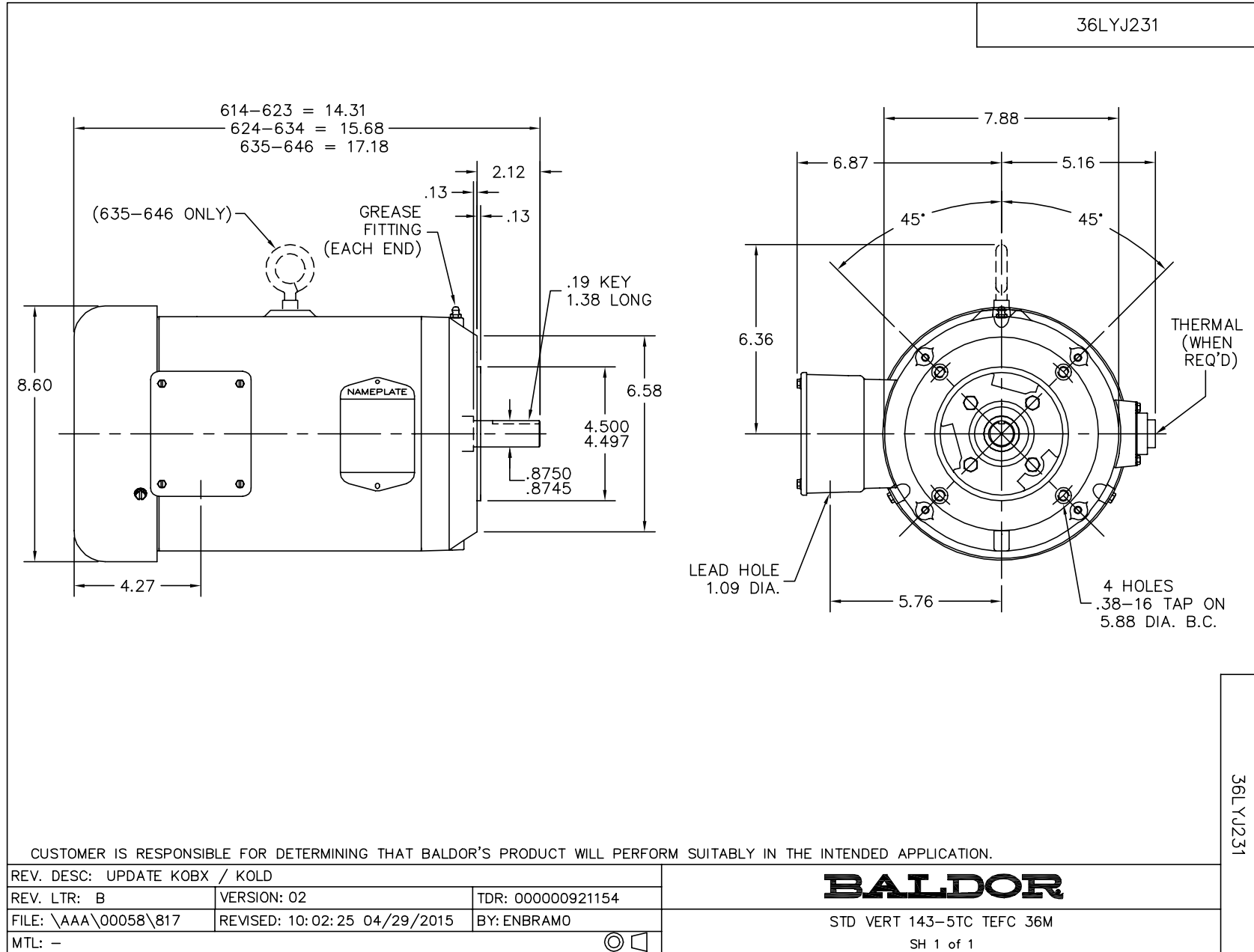
**Load Characteristics 460 V, 60 Hz, 1.5 HP**

| <b>% of Rated Load</b> | <b>25</b> | <b>50</b> | <b>75</b> | <b>100</b> | <b>125</b> | <b>150</b> | <b>S.F.</b> |
|------------------------|-----------|-----------|-----------|------------|------------|------------|-------------|
| <b>Power Factor</b>    | 30        | 48        | 59        | 67         | 71         | 74         | 69          |
| <b>Efficiency</b>      | 79.1      | 86        | 87.5      | 87.5       | 86.5       | 85.2       | 86.9        |
| <b>Speed</b>           | 1192.2    | 1184.8    | 1176.8    | 1168.1     | 1158.2     | 1147.5     | 1162        |
| <b>Line amperes</b>    | 1.57      | 1.77      | 2.07      | 2.43       | 2.88       | 3.36       | 2.7         |

Performance Graph at 460V, 60Hz, 1.5HP Typical performance - Not guaranteed values







CD0005

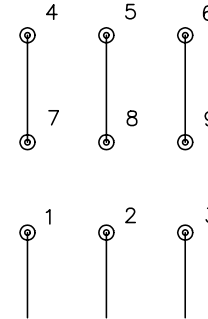


LOW VOLTAGE  
(2Y)



LINE

HIGH VOLTAGE  
(1Y)



LINE

NOTES:

1. INTERCHANGE ANY TWO LINE LEADS TO REVERSE ROTATION.
2. OPTIONAL THERMOSTATS ARE PROVIDED WHEN SPECIFIED.
3. ACTUAL NUMBER OF INTERNAL PARALLEL CIRCUITS MAY BE A MULTIPLE OF THOSE SHOWN ABOVE.
4. LEAD COLORS ARE OPTIONAL. LEADS MUST ALWAYS BE NUMBERED AS SHOWN.

REV. DESC: REVISE TO SHOW OPTIONAL COLORS

REV. LTR: E BY: JLP

REVISED: 01/19/99 10:15

TDR: 0171435

90000

FILE: AAA00005140

MDL: -

MTL: -

**BALDOR ELECTRIC Co.**

3PH, DV, 9 LEADS

CD0005