



GE INDUSTRIAL MOTORS
a **WOLONG** company

Product Technical Information

July 17, 2020

Data shown is for the current revision model #. Ensure your nameplate model # matches.

| | |
|----------------------------|-----------------------|
| Model Number: | 5KE365DAJ6020B |
| Catalog Number: | VF108 |
| Instruction Manual: | GEI-M1045 |
| Connection Diagram: | GEM2034E-FIG254 |
| Outline Drawing: | 148CB36VMHKCCAA0001 |

Accessory Connection Diagrams

| | | | |
|------------------------------|------|------------------------------|------|
| Bearing Thermocouple: | None | Heater: | None |
| RTD: | None | Thermistor: | None |
| Thermostat: | None | Winding Thermocouple: | None |
| Bearing RTD: | None | | |

Table of Contents

| | |
|-----------------------------|----|
| Specification | 01 |
| Performance Characteristics | 02 |
| Outline Drawing | 03 |
| Connection Drawing(s) | 04 |
| Spare parts | 05 |

Marks:

| | | | |
|----------------------------|-----------------------|-------------------------------|--------------|
| MODEL NUMBER: | 5KE365DAJ6020B | Estimated Weight: | 850 Lbs |
| Outline Drawing: | 148CB36VMHKCCAA0001 | Time Rating: | CONT |
| Connection Diagram: | GEM2034E-FIG254 | Enclosure: | WPI |
| Instruction Book: | GEI-M1045 | Encl Construction: | OPEN |
| Design Code: | 36BD1275A | Ambient Max(°C): | 40 |
| Type: | KE | Alt Ambient Max(°C): | -- |
| Frame: | L365TP16 | Insulation Class: | H |
| Phases: | 3 | NEMA Design: | B |
| Poles: | 4 | Nominal Efficiency: | 94.1 % |
| Output Power: | 75HP 55.5KW | Guaranteed Efficiency: | 93.0 % |
| RPM: | 1785 | 3/4 Load Efficiency: | 94.9 % |
| Voltage: | 230/460 | KVA Code: | G |
| Hertz: | 60 | Max KVAR: | 25.0 |
| Amps - FL: | 179.0/89.5 | Power Factor: | 83.0 |
| Service Factor: | 1.15 | Bearing - DE: | 6212C3 |
| Alt Service Factor: | -- | Bearing - ODE: | 235A2523AD01 |

Enclosure is Weather Protected One

Stamped Nameplate Notes:

NEMA ENCLOSURE WP-I, CSA ENCL DP
 ROT CCW FACING TOP LEAD/PH SEQ 1-2-3/1-2-3
 INVERTER DUTY PER NEMA MG1 PART 31
 ALTERNATE RATING FOR PWM CONTROL:1.0SF 40C AMBIENT
 VAR TORQUE RANGE 5 -60 HZ
 UPPER BRG LUBE OIL: 3.7 QTS
 0 DEG C TO 40 DEG C : ISO 32(MINERAL OR SYNTHETIC)
 -15 DEG C TO 0 DEG C : ISO 32 SYNTHETIC



Additional Information:

4P, VERT HOLLOW SHAFT HIGH THRUST (1D)
C/BOX 700 CU IN - 3.00" NPT
OIL RESISTANT SLEEVING ON LEADS
BEARING LIFE 8760 HRS AT 6244 LB THRUST
CG:15.23 IN FROM P-BASE FACE, STAT DEF:0.0033 IN
RCF:3300 CPM AT C/BOX SIDE, 3270 CPM AT
90 DEG FROM C/ BOX SIDE
NON-REVERSE BALL CARRIER,
BOLTED COUPLING, BX = 1.251, EW=0.25
FIRE PUMP MOTOR, UL FILE # 47088, VOL 22
WYE START DELTA RUN AT BOTH VOLTAGES
PART WINDING START AT LOW VOLTAGE ONLY
"CONNECTIONS TO BE VERIFIED BEFORE USING THIS MODEL"



Performance Characteristics

1st Winding 1st Connection

Design: 36BD1275A

Marks:

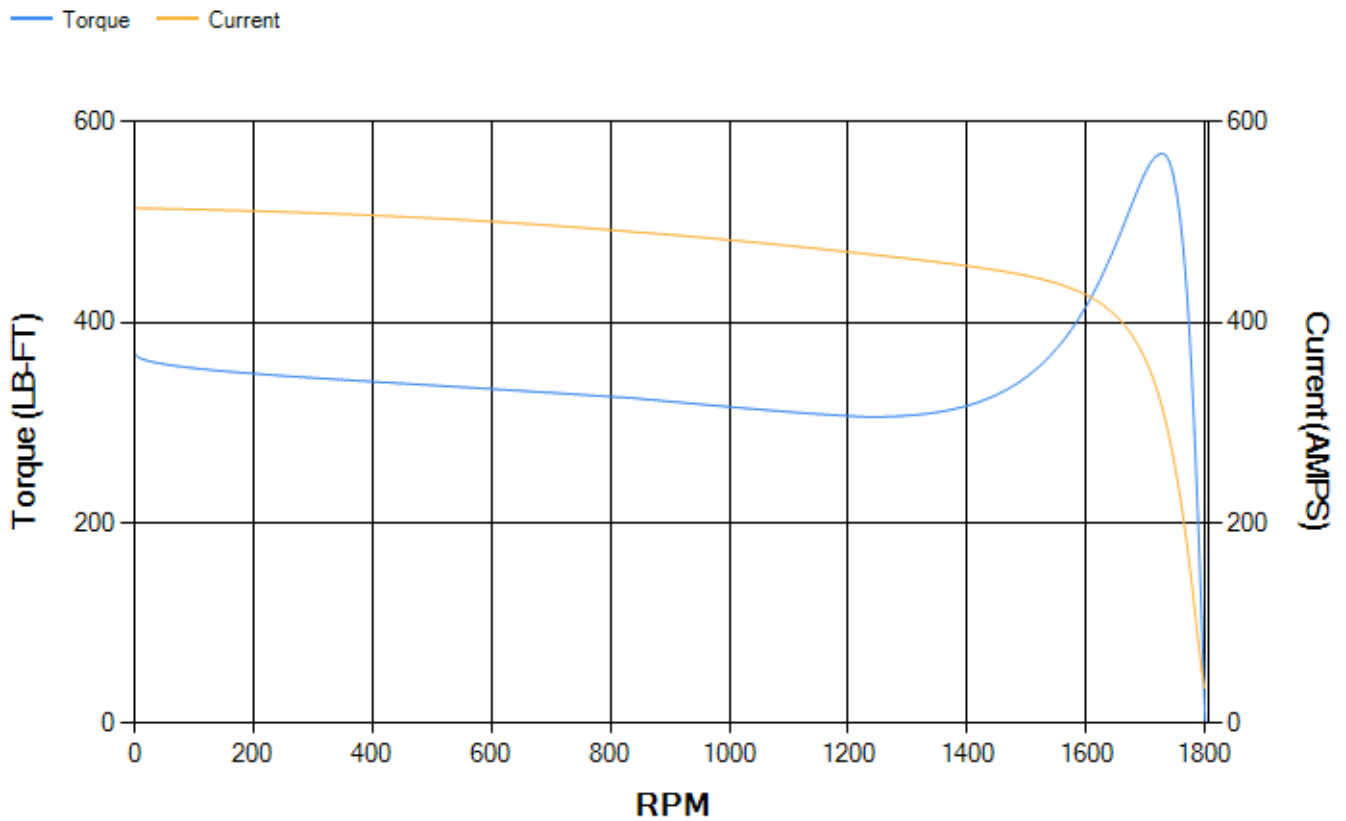
| LOAD % | 125.0 | 115.0 | 100.0 | 75.0 | 50.0 | 25.0 | 0.0 |
|--------|--------|--------|-------|-------|-------|-------|-------|
| % EFF | 94.26 | 94.48 | 94.94 | 94.91 | 94.41 | 91.51 | 0.00 |
| % PF | 84.84 | 84.36 | 83.11 | 78.84 | 69.1 | 46.79 | 3.85 |
| AMPS | 109.71 | 101.27 | 88.74 | 70.35 | 53.8 | 40.99 | 34.85 |

| | | | | | |
|--------------------|--------|--------------------|--------|--------------------|--------|
| TORQ(FL)#FT | 220.8 | TORQ(LR)%FL | 167.18 | TORQ(BD)%FL | 256.82 |
| AMPS(LR) | 514.14 | PF AT START | 0.33 | | |

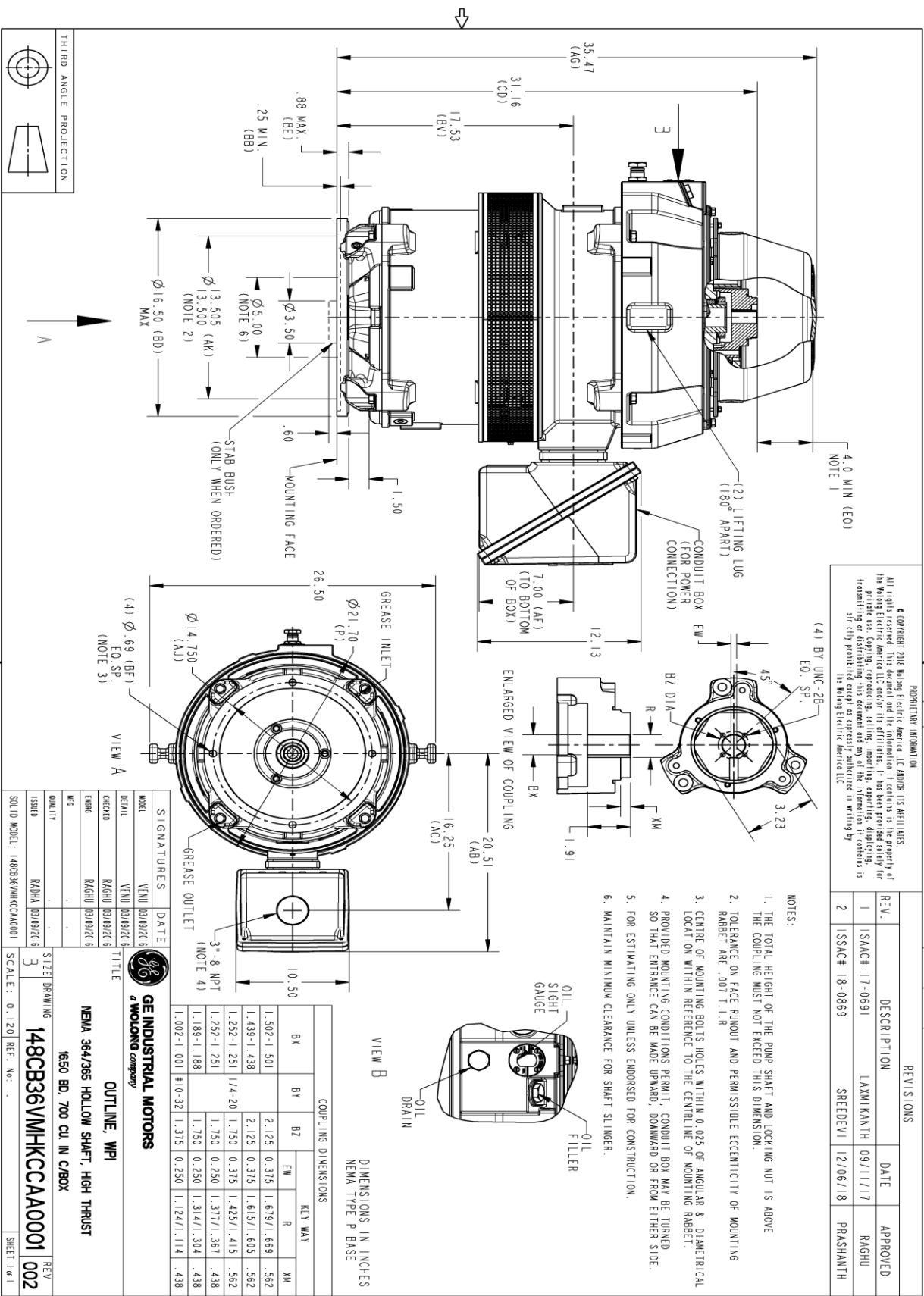
This motor is capable of two cold or one hot start with a maximum connected load inertia of 1750 Lb-Ft Sq (73.68 Kg-meter Sq) at 100% voltage, where the load torque varies with the square of the speed. Acceleration time with maximum inertia and the above load type is 37 seconds. Safe stall time at 100% voltage is 66 seconds cold, 45 seconds hot. Rotor inertia is 14.12 Lb-Ft Sq (0.59 Kg-meter Sq).

| | | | |
|---------------------------|-------|---------------------------|-------|
| Open Circuit A-C: | 0.694 | Short Circuit D-C: | 0.024 |
| Short Circuit A-C: | 0.039 | X/R Ratio: | 8.991 |
| Stator Slots: | 60 | Rotor Slots: | 50 |

Speed Torque Current Curve (First Connection, First Speed)



Marks:



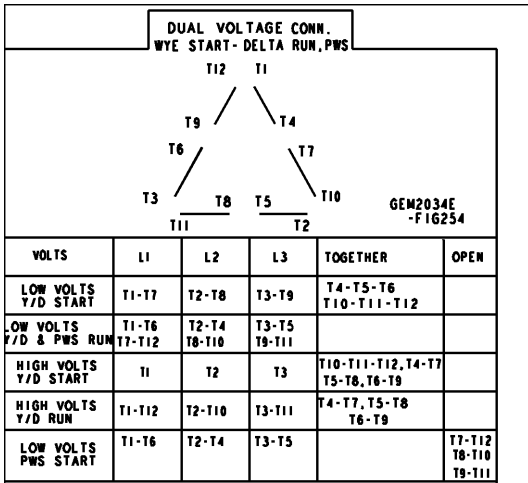
PROPRIETARY INFORMATION
 © COPYRIGHT 2018 Wolog Electric America LLC AND/OR ITS AFFILIATES. All rights reserved. This document and the information it contains is the property of the Wolog Electric America LLC and/or its affiliates. It has been provided solely for the use of the customer for whom it was prepared. No other use, reproduction, or transmission of any kind is permitted without the express written consent of Wolog Electric America LLC. This information is strictly prohibited except as expressly authorized in writing by the Wolog Electric America LLC.

| REV. | DESCRIPTION | DATE | APPROVED |
|------|----------------|----------------------|------------|
| 1 | ISAC# 17-0691 | LAXMI KANTH 09/11/17 | RAGHU |
| 2 | ISSAC# 18-0869 | SREDEVIL 12/06/18 | PRAASHANTH |

| SIZE | DRAWING NO. | REV | SHEET |
|------|---------------------|-----|-------|
| B | 148CB36VMHKCCAA0001 | 002 | 1 |

Marks:

Connection Diagram
GEM2034E-FIG254



| End shield Assembly | | |
|---------------------|---------------|----------------|
| Part Description | DE Side Part# | ODE Side Part# |
| End Shield | 115E7255AA1 | 115E7259LJ1 |
| Bearing | 235A2509BE01 | 235A2523AD01 |
| Slinger/Inproseal | 235A2300FM1 | |

| Fan & Fan Cover Assembly | |
|--------------------------|-------------|
| Part Description | Part# |
| Fan | |
| Fan Cover | 161C1053AA1 |

| Conduit & Accessories Box Assembly | |
|------------------------------------|-------------|
| Part Description | Part# |
| Conduit Box | 118D4408AD2 |

| Mechanical Accessories | |
|------------------------|-------|
| Part Description | Part# |
| Brake | |
| Tachometer | |

