



GE INDUSTRIAL MOTORS
a **WOLONG** company

Product Technical Information

July 17, 2020

Data shown is for the current revision model #. Ensure your nameplate model # matches.

Model Number:	5KE405DAJ6020C
Catalog Number:	VF110
Instruction Manual:	GEI-M1045
Connection Diagram:	GEM2034E-FIG261
Outline Drawing:	148CB40VMHKLGA0001

Accessory Connection Diagrams

Bearing Thermocouple:	None	Heater:	None
RTD:	None	Thermistor:	None
Thermostat:	None	Winding Thermocouple:	None
Bearing RTD:	None		

Table of Contents

Specification	01
Performance Characteristics	02
Outline Drawing	03
Connection Drawing(s)	04
Spare parts	05

Marks:

MODEL NUMBER:	5KE405DAJ6020C	Estimated Weight:	1210 Lbs
Outline Drawing:	148CB40VMHKLGA0001	Time Rating:	CONT
Connection Diagram:	GEM2034E-FIG261	Enclosure:	WPI
Instruction Book:	GEI-M1045	Encl Construction:	OPEN
Design Code:	40BD1196A	Ambient Max(°C):	40
Type:	KE	Alt Ambient Max(°C):	--
Frame:	L405TP16	Insulation Class:	H
Phases:	3	NEMA Design:	B
Poles:	4	Nominal Efficiency:	94.5 %
Output Power:	125HP 92.5KW	Guaranteed Efficiency:	93.6 %
RPM:	1775	3/4 Load Efficiency:	95.0 %
Voltage:	460	KVA Code:	G
Hertz:	60	Max KVAR:	35.5
Amps - FL:	146.0	Power Factor:	85.0
Service Factor:	1.15	Bearing - DE:	6215C3
Alt Service Factor:	--	Bearing - ODE:	235A2532AA01

Enclosure is Weather Protected One

Stamped Nameplate Notes:

NEMA ENCLOSURE WP-I, CSA ENCL DP
 ROT CCW FACING TOP LEAD/PH SEQ 1-2-3/1-2-3
 INVERTER DUTY PER NEMA MG1 PART 31
 ALTERNATE RATING FOR PWM CONTROL:1.0SF 40C AMBIENT
 VAR TORQUE RANGE 5 -60 HZ
 UPPER BRG LUBE OIL: 6 QTS
 0 DEG C TO 40 DEG C : ISO 32(MINERAL OR SYNTHETIC)
 -15 DEG C TO 0 DEG C : ISO 32 SYNTHETIC



Additional Information:

4P, VERT HOLLOW SHAFT HIGH THRUST (1D)
C/BOX 1260 CU IN - 2(4.00" NPT)
OIL RESISTANT SLEEVING ON LEADS
BEARING LIFE 8760 HRS AT 7539 LB THRUST
CG:18.50 IN FROM P-BASE FACE, STAT DEF:0.0032 IN
RCF:3240 CPM AT C/BOX SIDE, 3360 CPM AT
90 DEG FROM C/ BOX SIDE
NON-REVERSE BALL CARRIER,
BOLTED COUPLING, BX = 1.501, EW=0.375
FIRE PUMP MOTOR, UL FILE # 47088, VOL 22
WYE START DELTA RUN
PART WINDING START
ISAAC#19-0371 MADHAVA T



Performance Characteristics

1st Winding 1st Connection

Design: 40BD1196A

Marks:

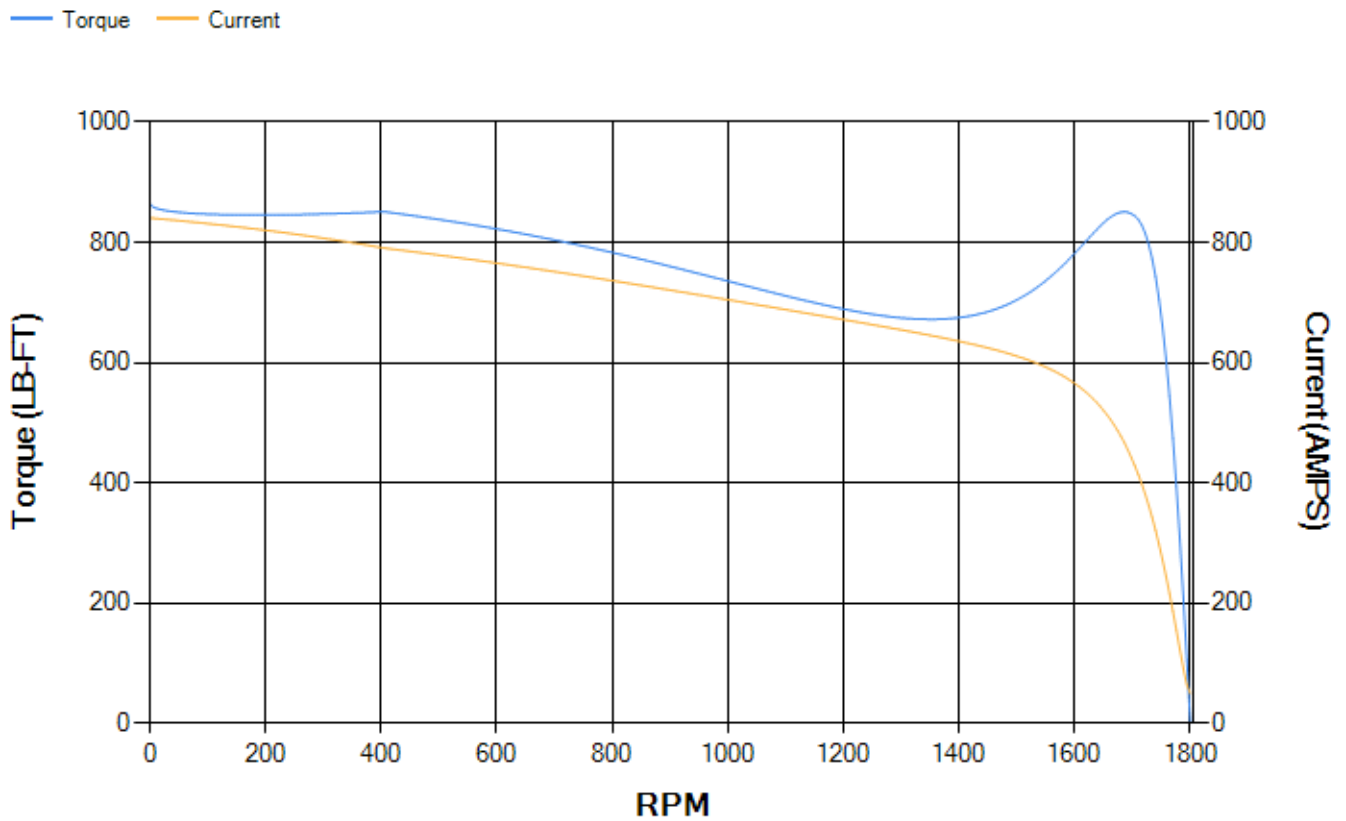
LOAD %	125.0	115.0	100.0	75.0	50.0	25.0	0.0
% EFF	93.89	94.2	94.79	94.98	94.75	92.42	0.00
% PF	85.95	85.8	85.08	81.95	73.77	52.27	4.06
AMPS	181.21	166.47	145.06	112.73	83.69	60.55	49.51

TORQ(FL)#FT	369.56	TORQ(LR)%FL	234.14	TORQ(BD)%FL	229.78
AMPS(LR)	840.6	PF AT START	0.43		

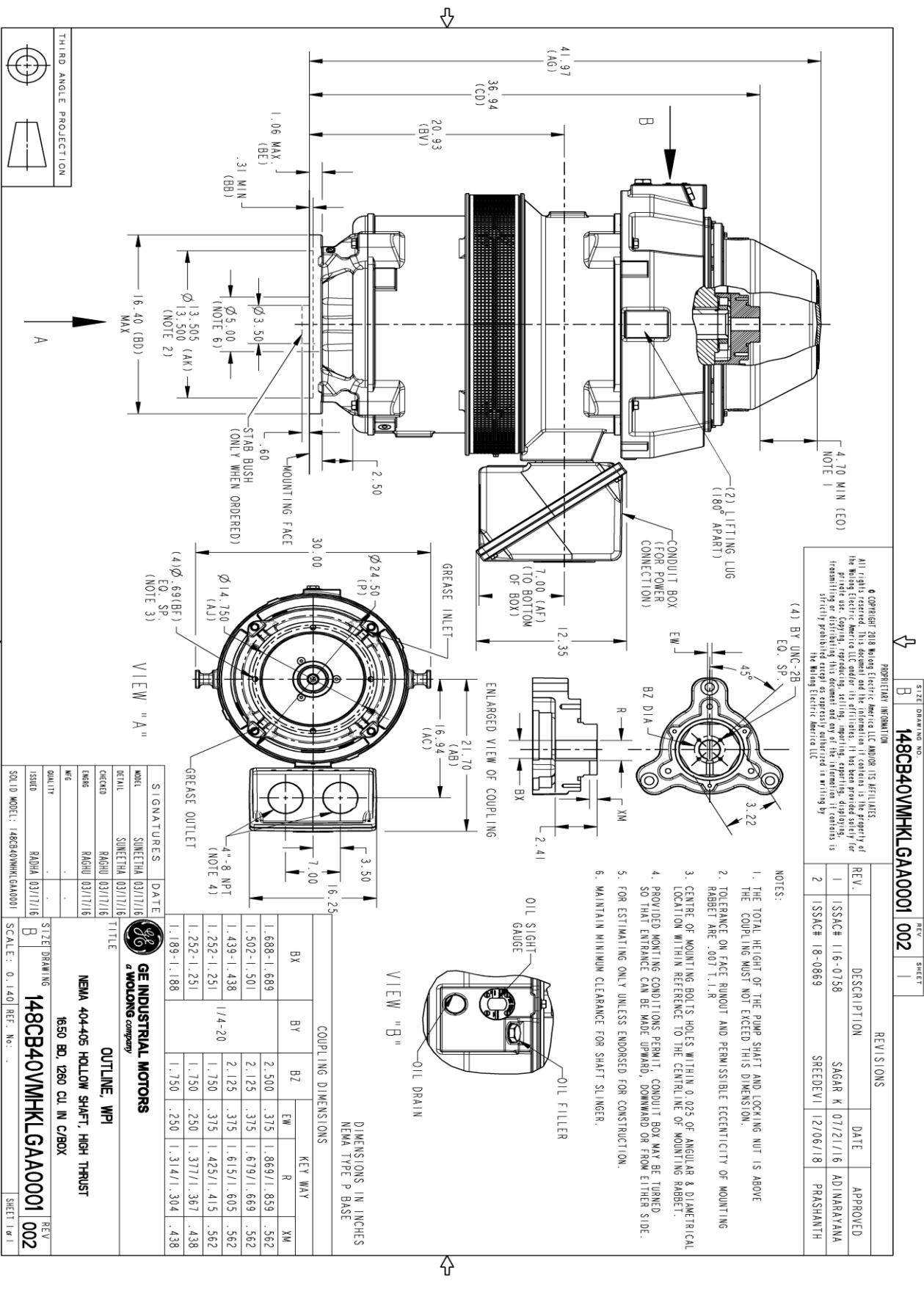
This motor is capable of two cold or one hot start with a maximum connected load inertia of 1826 Lb-Ft Sq (76.87 Kg-meter Sq) at 100% voltage, where the load torque varies with the square of the speed. Acceleration time with maximum inertia and the above load type is 17 seconds. Safe stall time at 100% voltage is 36 seconds cold, 20 seconds hot. Rotor inertia is 26.32 Lb-Ft Sq (1.11 Kg-meter Sq).

Open Circuit A-C:	0.569	Short Circuit D-C:	0.021
Short Circuit A-C:	0.026	X/R Ratio:	7.885
Stator Slots:	72	Rotor Slots:	58

Speed Torque Current Curve (First Connection, First Speed)



Marks:



THIRD ANGLE PROJECTION



SIZE DRAWING NO. B 148CB40VMHKLGA0001 002

SIGNATURES	DATE
MOEL SUNEETHA 03/17/16	
DETAIL SUNEETHA 03/17/16	
DESIGN RAGHU 03/17/16	
ENGR RAGHU 03/17/16	
QC	
QUALITY	
ISSUED RADHA 03/17/16	
SOLID MODEL: 148CB40VMHKLGA0001	

GE INDUSTRIAL MOTORS
 a Wolog company

OUTLINE, WPI

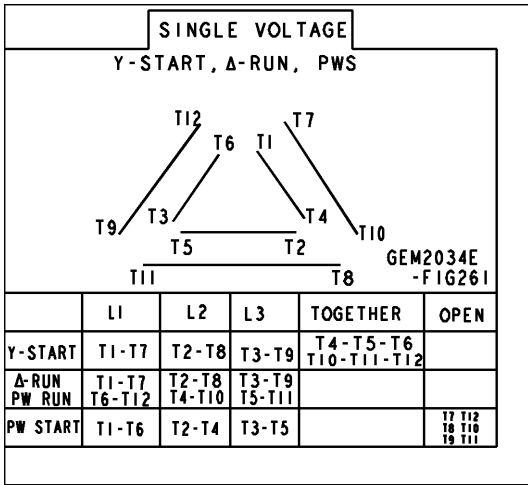
NEMA 40-405 HOLLOW SHAFT, HIGH THRUST

1650 BD, 1260 CL IN C/BOX

SCALE: 0.140 REF. NO. SHEET 1 OF 1

Marks:

Connection Diagram
GEM2034E-FIG261



End shield Assembly		
Part Description	DE Side Part#	ODE Side Part#
End Shield	115E7306AC1	115E7310LJ1
Bearing	235A2513AL01	235A2532AA01
Slinger/Inproseal	235A2300HW1	

Fan & Fan Cover Assembly	
Part Description	Part#
Fan	
Fan Cover	161C1054AA1

Conduit & Accessories Box Assembly	
Part Description	Part#
Conduit Box	179B9058G03

Mechanical Accessories	
Part Description	Part#
Brake	
Tachometer	

