



GE INDUSTRIAL MOTORS
a **WOLONG** company

Product Technical Information

July 17, 2020

Data shown is for the current revision model #. Ensure your nameplate model # matches.

Model Number:	5KE444DAJ6020B
Catalog Number:	VF111
Instruction Manual:	GEI-M1045
Connection Diagram:	GEM2034E-FIG261
Outline Drawing:	148CB44VMHKLGA0001

Accessory Connection Diagrams

Bearing Thermocouple:	None	Heater:	None
RTD:	None	Thermistor:	None
Thermostat:	None	Winding Thermocouple:	None
Bearing RTD:	None		

Table of Contents

Specification	01
Performance Characteristics	02
Outline Drawing	03
Connection Drawing(s)	04
Spare parts	05

Marks:

MODEL NUMBER:	5KE444DAJ6020B	Estimated Weight:	2280 Lbs
Outline Drawing:	148CB44VMHKLGA0001	Time Rating:	CONT
Connection Diagram:	GEM2034E-FIG261	Enclosure:	WPI
Instruction Book:	GEI-M1045	Encl Construction:	OPEN
Design Code:	44BD1212A	Ambient Max(°C):	40
Type:	KE	Alt Ambient Max(°C):	--
Frame:	L444TP16	Insulation Class:	H
Phases:	3	NEMA Design:	B
Poles:	4	Nominal Efficiency:	95.0 %
Output Power:	150HP 111KW	Guaranteed Efficiency:	94.1 %
RPM:	1785	3/4 Load Efficiency:	95.2 %
Voltage:	460	KVA Code:	G
Hertz:	60	Max KVAR:	48.7
Amps - FL:	176.0	Power Factor:	84.0
Service Factor:	1.15	Bearing - DE:	6217C3
Alt Service Factor:	--	Bearing - ODE:	235A2536AB01

Enclosure is Weather Protected One

Stamped Nameplate Notes:

NEMA ENCLOSURE WP-I, CSA ENCL DP
 ROT CCW FACING TOP LEAD/PH SEQ 1-2-3/1-2-3
 INVERTER DUTY PER NEMA MG1 PART 31
 ALTERNATE RATING FOR PWM CONTROL:1.0SF 40C AMBIENT
 VAR TORQUE RANGE 5 -60 HZ
 UPPER BRG LUBE OIL: 10.2 QTS
 0 DEG C TO 40 DEG C : ISO 32(MINERAL OR SYNTHETIC)
 -15 DEG C TO 0 DEG C : ISO 32 SYNTHETIC



Additional Information:

4P, VERT HOLLOW SHAFT HIGH THRUST (1D)
C/BOX 1260 CU IN - 2(4.00" NPT)
OIL RESISTANT SLEEVING ON LEADS
BEARING LIFE 8760 HRS AT 14462 LB THRUST
CG:22.60 IN FROM P-BASE FACE, STAT DEF:= 0.005 IN
RCF: 2764 CPM
NON-REVERSE BALL CARRIER,
BOLTED COUPLING, BX = 1.688, EW=0.375
FIRE PUMP MOTOR, UL FILE # 47088, VOL 22
WYE START DELTA RUN
PART WINDING START
ISAAC#19-0029, ISAAC # 18-0060



Performance Characteristics

1st Winding 1st Connection

Design: 44BD1212A

Marks:

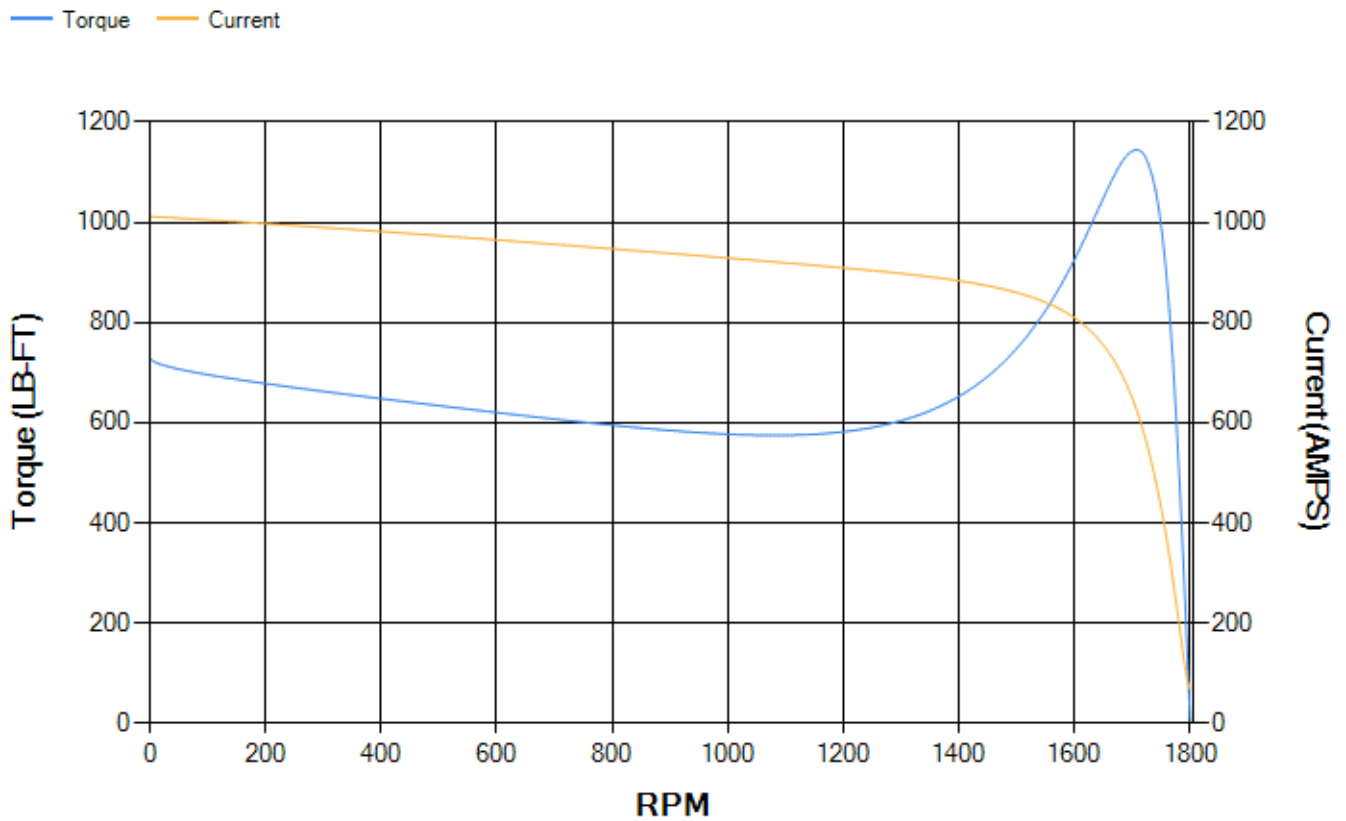
LOAD %	125.0	115.0	100.0	75.0	50.0	25.0	0.0
% EFF	94.64	94.84	95.27	95.19	94.67	91.84	0.00
% PF	85.53	85.08	83.88	79.74	70.18	47.82	3.99
AMPS	216.79	200.1	175.69	138.71	105.66	79.92	68.04

TORQ(FL)#FT	441.67	TORQ(LR)%FL	165.26	TORQ(BD)%FL	258.76
AMPS(LR)	1011.85	PF AT START	0.32		

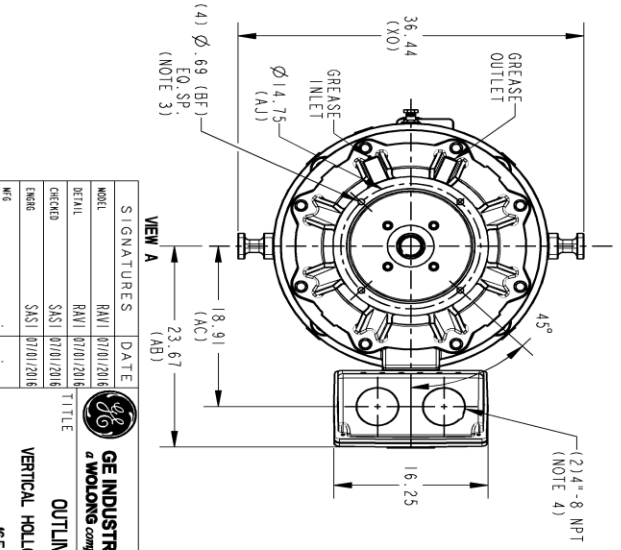
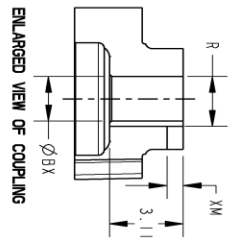
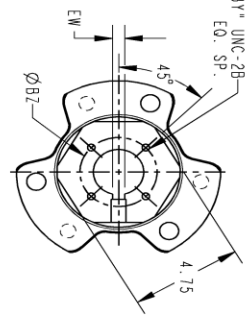
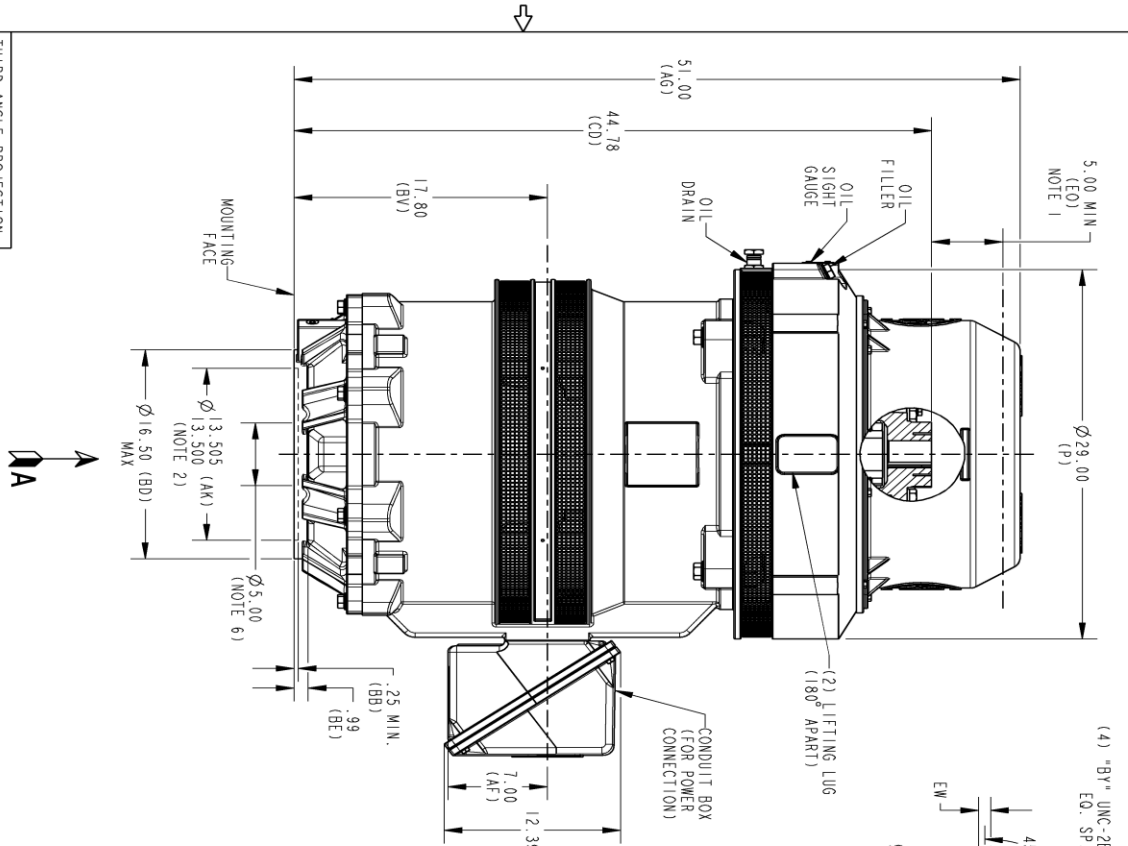
This motor is capable of two cold or one hot start with a maximum connected load inertia of 2257 Lb-Ft Sq (95.02 Kg-meter Sq) at 100% voltage, where the load torque varies with the square of the speed. Acceleration time with maximum inertia and the above load type is 25 seconds. Safe stall time at 100% voltage is 47 seconds cold, 30 seconds hot. Rotor inertia is 44.05 Lb-Ft Sq (1.85 Kg-meter Sq).

Open Circuit A-C:	0.694	Short Circuit D-C:	0.028
Short Circuit A-C:	0.043	X/R Ratio:	10.701
Stator Slots:	72	Rotor Slots:	58

Speed Torque Current Curve (First Connection, First Speed)



Marks:

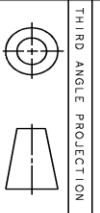


- NOTES:
1. THE TOTAL HEIGHT OF PUMP SHAFT AND LOCKING NUT ABOVE COUPLING MUST NOT EXCEED THIS DIMENSION.
 2. TOLERANCE ON FACE ROUNDOFF AND PERMISSIBLE ECCENTRICITY OF MOUNTING RABBET ARE .007 T.1.R
 3. CENTRE OF MOUNTING BOLTS HOLES WITHIN 0.025 OF ANGULAR & DIAMETRICAL LOCATION WITHIN REFERENCE TO THE CENTRELINE OF MOUNTING RABBET.
 4. PROVIDED MOUNTING CONDITIONS PERMIT, CONDUIT BOX MAY BE TURNED SO THAT ENTRANCE CAN BE MADE UPWARD, DOWNWARD OR FROM EITHER SIDE.
 5. FOR ESTIMATING ONLY UNLESS ENDORSED FOR CONSTRUCTION.
 6. MAINTAIN MINIMUM CLEARANCE FOR SHAFT SLINGER.

DIMENSIONS IN INCHES
NEMA TYPE P BASE
COUPLING DIMENSIONS

KEY WAY	R	XM
BX	BY	BZ
1.501	1/4-20	2.125
1.688	1/4-20	2.500
1.751	1/4-20	2.500
1.813	1/4-20	2.500
1.938	1/4-20	2.500
2.001	3/8-16	3.250
2.063	3/8-16	3.250
2.126	3/8-16	3.250
2.188	3/8-16	3.250
2.251	3/8-16	3.250
2.316	3/8-16	3.250
2.438	3/8-16	3.250
2.501	3/8-16	3.250

REV.	DESCRIPTION	DATE	APPROVED
1	ISAC# 17-0700	DHEERAJ 11/15/2017	VIJAYT
2	ISSAC# 18-0869	SREDEVIL 12/11/18	PRAZHANTH



GE INDUSTRIAL MOTORS
a WOLONG company

OUTLINE, NEMA WP1 444445
VERTICAL HOLLOW SHAFT-HIGH THRUST GRS LOWER
665 BD 1260 CU IN C/BOX

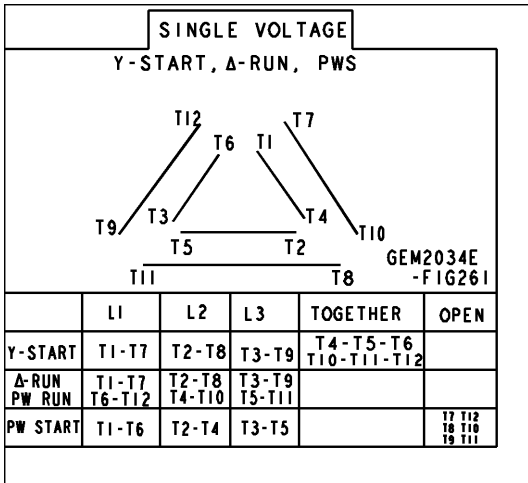
SIGNATURES DATE
 MODEL RAVI 07/01/2016
 DETAIL RAVI 07/01/2016
 CHECKER SASI 07/01/2016
 ENGR SASI 07/01/2016
 WEG
 QUALITY
 ISSUED
 SOLID MODEL: 148CB44VMHKLGA0001

SCALE: 0.120 REF. NO.:
 SIZE DRAWING
148CB44VMHKLGA0001
 SHEET 1 OF 1

SIZE DRAWING NO. **148CB44VMHKLGA0001** 002
 REV SHEET

Marks:

Connection Diagram
GEM2034E-FIG261



End shield Assembly		
Part Description	DE Side Part#	ODE Side Part#
End Shield	115E7660AA1	115E7670LM1
Bearing	235A2522AJ01	235A2536AB01
Slinger/Inproseal	149C4399G06	

Fan & Fan Cover Assembly	
Part Description	Part#
Fan	
Fan Cover	161C1050AA1

Conduit & Accessories Box Assembly	
Part Description	Part#
Conduit Box	179B9058G03

Mechanical Accessories	
Part Description	Part#
Brake	
Tachometer	

