



GE INDUSTRIAL MOTORS
a **WOLONG** company

Product Technical Information

November 6, 2022

Data shown is for the current revision model #. Ensure your nameplate model # matches.

Model Number:	5KE444DAJ6021B
Catalog Number:	VF112
Instruction Manual:	GEI-M1045
Connection Diagram:	GEM2034E-FIG261
Outline Drawing:	148CB44VMHKFGAA0001

Accessory Connection Diagrams

Bearing Thermocouple:	None	Heater:	None
RTD:	None	Thermistor:	None
Thermostat:	None	Winding Thermocouple:	None
Bearing RTD:	None		

Table of Contents

Specification	01
Performance Characteristics	02
Outline Drawing	03
Connection Drawing(s)	04
Spare parts	05

Marks:

MODEL NUMBER:	5KE444DAJ6021B	Estimated Weight:	2460 Lbs
Outline Drawing:	148CB44VMHKFGAA0001	Time Rating:	CONT
Connection Diagram:	GEM2034E-FIG261	Enclosure:	WPI
Instruction Book:	GEI-M1045	Encl Construction:	OPEN
Design Code:	44BD1215A	Ambient Max(°C):	40
Type:	KE	Alt Ambient Max(°C):	--
Frame:	L444TP16	Insulation Class:	H
Phases:	3	NEMA Design:	B
Poles:	4	Nominal Efficiency:	95.0 %
Output Power:	200HP 148KW	Guaranteed Efficiency:	94.1 %
RPM:	1785	3/4 Load Efficiency:	--
Voltage:	460	KVA Code:	G
Hertz:	60	Max KVAR:	57.9
Amps - FL:	227.0	Power Factor:	86.0
Service Factor:	1.15	Bearing - DE:	6217C3
Alt Service Factor:	--	Bearing - ODE:	235A2536AB01

Enclosure is Weather Protected One

Stamped Nameplate Notes:

NEMA ENCLOSURE WP-I, CSA ENCL DP
 ROT CCW FACING TOP LEAD/PH SEQ 1-2-3/1-2-3
 INVERTER DUTY PER NEMA MG1 PART 31
 ALTERNATE RATING FOR PWM CONTROL:1.0SF 40C AMBIENT
 VAR TORQUE RANGE 5 -60 HZ
 UPPER BRG LUBE OIL: 10.2 QTS
 0 DEG C TO 40 DEG C : ISO 32(MINERAL OR SYNTHETIC)
 -15 DEG C TO 0 DEG C : ISO 32 SYNTHETIC



Additional Information:

4P, VERT HOLLOW SHAFT HIGH THRUST (1D)
C/BOX 2500 CU IN - 2(4.00" NPT)
OIL RESISTANT SLEEVING ON LEADS
BEARING LIFE 8760 HRS AT 14462 LB THRUST
WYE START DELTA RUN
CG:22.60 IN FROM P-BASE FACE, STAT DEF:= 0.005 IN
RCF: 2641 CPM
NON-REVERSE BALL CARRIER,
BOLTED COUPLING, BX = 1.688, EW=0.375
FIRE PUMP MOTOR
UL FILE # 47088, VOL 22
PART WINDING START



Performance Characteristics

1st Winding 1st Connection

Design: 44BD1215A

Marks:

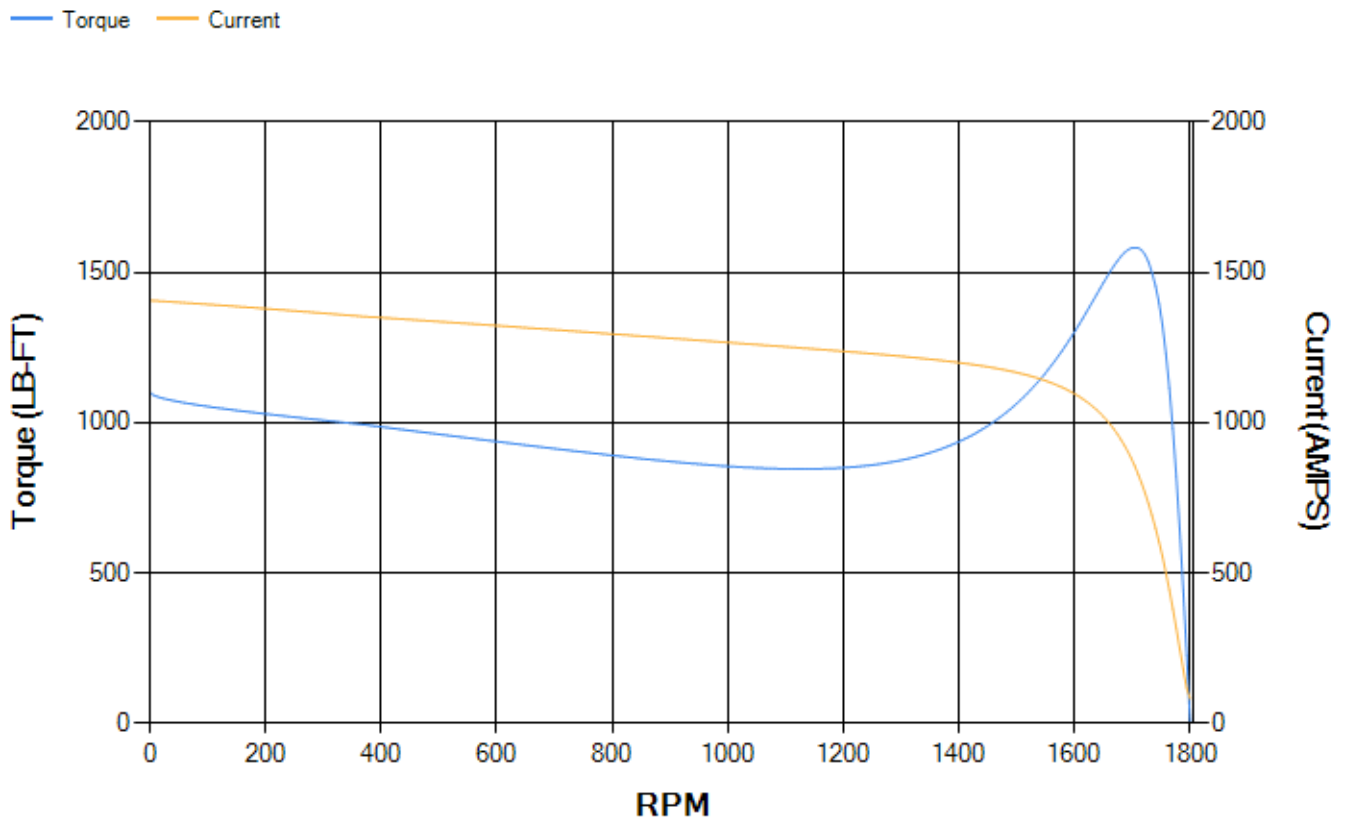
LOAD %	125.0	115.0	100.0	75.0	50.0	25.0	0.0
% EFF	95.24	95.44	95.88	95.86	95.53	93.3	0.00
% PF	87.06	86.71	85.74	82.18	73.47	51.4	3.56
AMPS	282.18	260.11	227.72	178.21	133.35	97.58	80.77

TORQ(FL)#FT 588.9 **TORQ(LR)%FL** 187.19 **TORQ(BD)%FL** 268.35
AMPS(LR) 1406.91 **PF AT START** 0.33

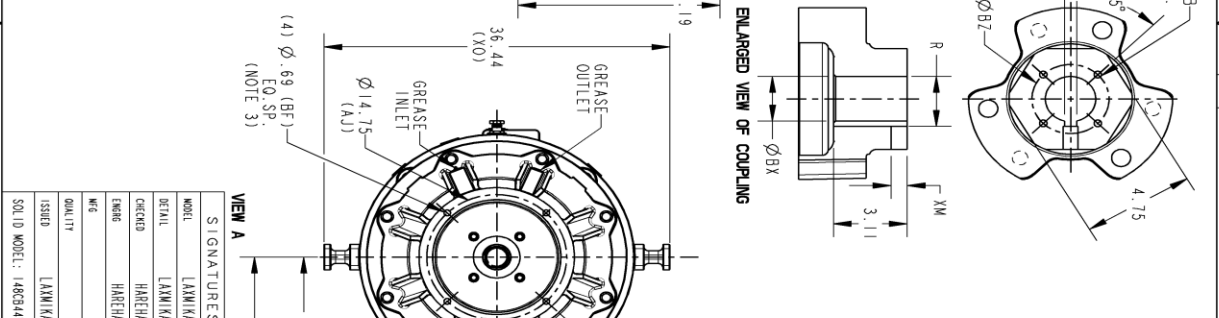
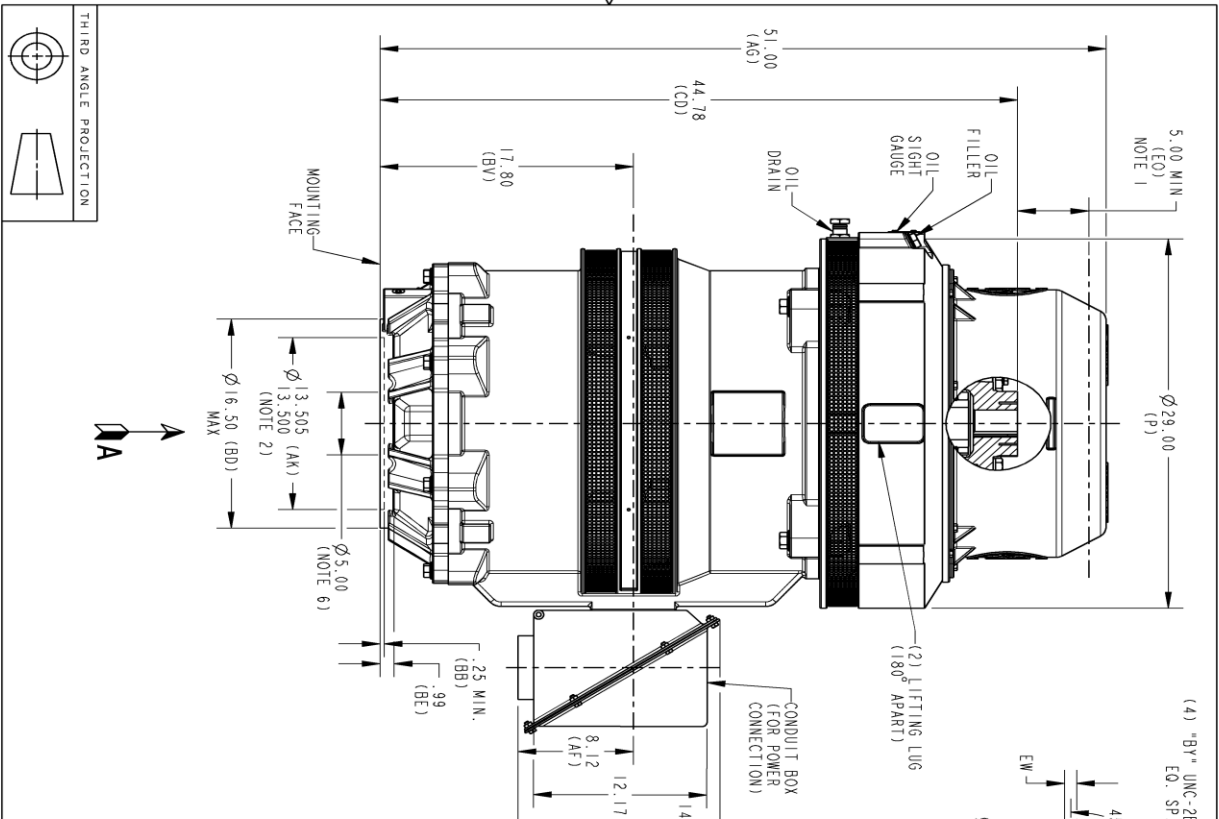
This motor is capable of two cold or one hot start with a maximum connected load inertia of 2878 Lb-Ft Sq (121.16 Kg-meter Sq)at 100% voltage, where the load torque varies with the square of the speed. Acceleration time with maximum inertia and the above load type is 21 seconds. Safe stall time at 100% voltage is 41 seconds cold, 26 seconds hot. Rotor inertia is 61 Lb-Ft Sq (2.57 Kg-meter Sq).

Open Circuit A-C: 0.765 **Short Circuit D-C:** 0.031
Short Circuit A-C: 0.04 **X/R Ratio:** 11.681
Stator Slots: 72 **Rotor Slots:** 58

Speed Torque Current Curve (First Connection, First Speed)



Marks:



REVISIONS

REV.	DESCRIPTION	DATE	APPROVED
1	ISSAC # 18-0869	12/11/18	PRASHANTH
2	ISSAC # 19-0101	BHARATH 02/20/19	DEEPAKANI

NOTES:

1. THE TOTAL HEIGHT OF PUMP SHAFT AND LOCKING NUT ABOVE COUPLING MUST NOT EXCEED THIS DIMENSION.
2. TOLERANCE ON FACE ROUNDOFF AND PERMISSIBLE ECCENTRICITY OF MOUNTING RABBIT ARE .007 T.1.R
3. CENTRE OF MOUNTING BOLTS WITHIN 0.025 OF ANGULAR & DIAMETRICAL LOCATION WITHIN REFERENCE TO THE CENTRAL LINE OF MOUNTING RABBIT.
4. PROVIDED MOUNTING CONDITIONS PERMIT, CONDUIT BOX MAY BE TURNED SO THAT ENTRANCE CAN BE MADE UPWARD, DOWNWARD OR FROM EITHER SIDE.
5. FOR ESTIMATING ONLY UNLESS ENDORSED FOR CONSTRUCTION.
6. MAINTAIN MINIMUM CLEARANCE FOR SHAFT SLINGER.

DIMENSIONS IN INCHES
NEMA TYPE P BASE

COUPLING DIMENSIONS	KEY WAY			
	BX	BY	BZ	EW
1.501	1/4-20	2.125	.315	1.569
1.588	1/4-20	2.500	.375	1.559
1.751	1/4-20	2.500	.315	1.922
1.813	1/4-20	2.500	.500	2.033
1.938	1/4-20	2.500	.500	2.160
2.001	3/8-16	3.250	.500	2.223
2.063	3/8-16	3.250	.500	2.287
2.126	3/8-16	3.250	.500	2.350
2.188	3/8-16	3.250	.500	2.414
2.251	3/8-16	3.250	.500	2.477
2.316	3/8-16	3.250	.500	2.551
2.438	3/8-16	3.250	.625	2.715
2.501	3/8-16	3.250	.625	2.778

SIGNATURES

MODEL	DATE	TITLE
LAXMIKANTH	06/19/2017	OUTLINE, NEMA WPI 444/445
LAXMIKANTH	06/19/2017	VERTICAL HOLLOW SHAFT, HIGH THRUST BRG LOWER
HARESHARAN	06/19/2017	
HARESHARAN	06/19/2017	

GE INDUSTRIAL MOTORS
a wolong company

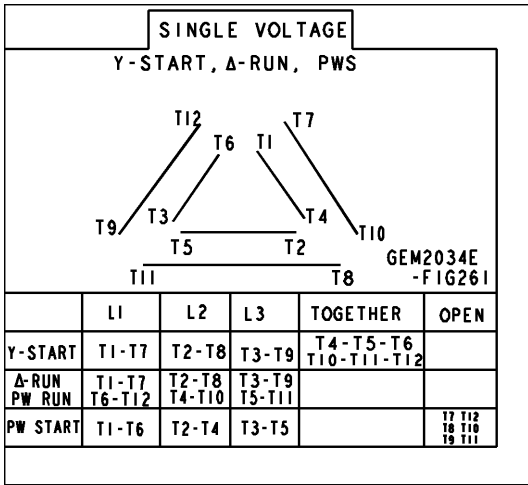
665 BD, 2500 CL IN C/BOX

148CB44VMHKFGAA0001 002

SCALE: 0.120 REF. NO.: 148CB44VMHKFGAA0001

Marks:

Connection Diagram
GEM2034E-FIG261



End shield Assembly		
Part Description	DE Side Part#	ODE Side Part#
End Shield	115E7660AA1	115E7670LM1
Bearing	235A2522AJ01	235A2536AB01
Slinger/Inproseal	149C4399G06	

Fan & Fan Cover Assembly	
Part Description	Part#
Fan	
Fan Cover	161C1050AA1

Conduit & Accessories Box Assembly	
Part Description	Part#
Conduit Box	179B9052G01

Mechanical Accessories	
Part Description	Part#
Brake	
Tachometer	

