

DATE March 15, 2017  
 Catalog No: VH1004FP

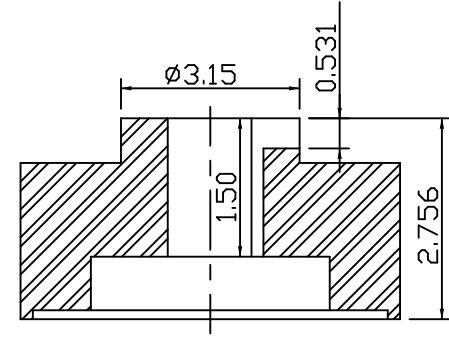
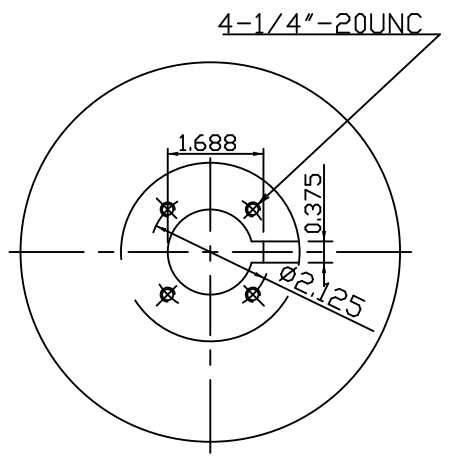
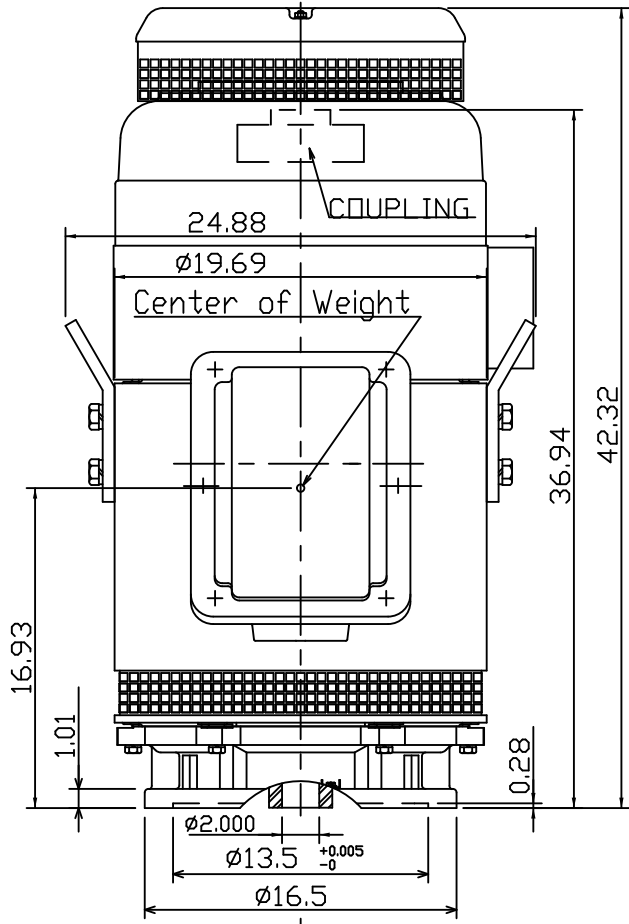
OUTLINE DIMENSIONS  
 3-PHASE INDUCTION MOTOR

MOTOR TYPE: AMRC  
 FRAME NO. 404TP

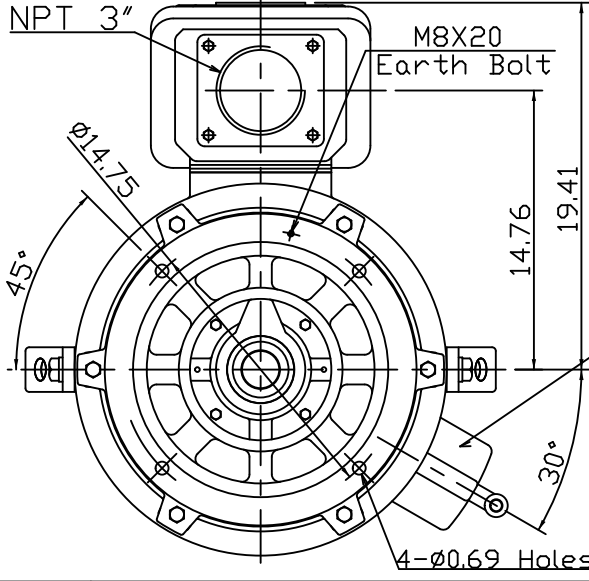
Pole	HP	kW	Hz	VOLT	r/min(rpm)
4	100	75	60	230/460	1800

Ins	Rating	Dimension in	Approx Weight	Bearings	
F	CONT.	inch	1279 lbs	DE: 6315C3	NDE: 7222B

NEMA Weather Protected TYPE IKWP I).Squirrel-cage Rotor.



Coupling Dimension



- Note:
1. Downthrust:8600lbs (L10:8800hrs)
  2. Rotation:C.C.W (View from Top)
  3. With Ball type N.R.R.
  4. Approx Reed Frequencies:53.7Hz
  5. Upper Bearing(Oil lube)  
 Kind of Oil:Turbine Oil  
 -300SSU/100°F(ISO VG68)  
 Quantity:1.06 Gallons

Oil Gauge,Oil Inlet and Outlet(UPPER BEARING)



DWG.	K.L.KUD	04 -20 11
CHKD.	K.L.KUD	04 -20 11
APPD.	M.C.TSAI	04 -20 11



DWG NO. 31057H811360

# TECO Westinghouse

ISSUED <b>01/07/09</b>	<b>PERFORMANCE DATA</b> <b>3-PHASE INDUCTION MOTOR</b>	ENCLOSURE <b>WP1</b>
TYPE <b>AMRCYC</b>		CATALOG# <b>VH1004FP</b>

### NAMEPLATE INFORMATION

OUTPUT		POLE	FRAME SIZE	VOLTAGE	HZ	RATED AMBIENT	INS. CLASS	NEMA DESIGN	TIME RATING	SERVICE FACTOR
HP	KW									
<b>100</b>	<b>75</b>	<b>4</b>	<b>404TP</b>	<b>230/460</b>	<b>60</b>	<b>40°C</b>	<b>F</b>	<b>B</b>	<b>CONT.</b>	<b>1.15</b>

### TYPICAL PERFORMANCE

FULL LOAD RPM	EFFICIENCY				POWER FACTOR			MAXIMUM POWER FACTOR CORRECTION
	FULL LOAD		3/4 LOAD %	1/2 LOAD %	F. L. %	3/4 LOAD %	1/2 LOAD %	
	NOM. %	MIN. %						
<b>1775</b>	<b>94.1</b>	<b>93.0</b>	<b>94.1</b>	<b>94.1</b>	<b>86.0</b>	<b>82.0</b>	<b>73.5</b>	<b>18.13 KVAR</b>

CURRENTS			NEMA KVA CODE LETTER
NO LOAD	FULL LOAD	LOCKED ROTOR	
<b>79.0/39.5</b>	<b>231/116</b>	<b>1450/725</b>	<b>G</b>

TORQUE				INERTIA			ACCEL TIME	
FULL LOAD lb-ft	LOCKED ROTOR %FLT	PULL UP %FLT	BREAK DOWN %FLT	ROTOR WR <sup>2</sup> lb-ft <sup>2</sup>	NEMA LOAD WK <sup>2</sup> lb-ft <sup>2</sup>	MAX ALLOWABLE WK <sup>2</sup> lb-ft <sup>2</sup>	NEMA LOAD WK <sup>2</sup> Sec	MAX ALLOWABLE WK <sup>2</sup> Sec
<b>295.78</b>	<b>200</b>	<b>180</b>	<b>270</b>	<b>19.763</b>	<b>441</b>	<b>1323</b>	<b>4.11</b>	<b>11.98</b>

SAFE STALL TIME IN SECONDS		ALLOWABLE STARTS PER HOUR		SOUND PRESSURE LEVEL @ 3 FT dB(A)
COLD	HOT	COLD	HOT	
<b>17</b>	<b>12</b>	<b>2</b>	<b>1</b>	

APPROVED:	<b>D. BRIGGS II</b>	DRAWING NO.	<b>31057VH1004FP</b>	REVISION	<b>0</b>
-----------	---------------------	-------------	----------------------	----------	----------

**TECO**

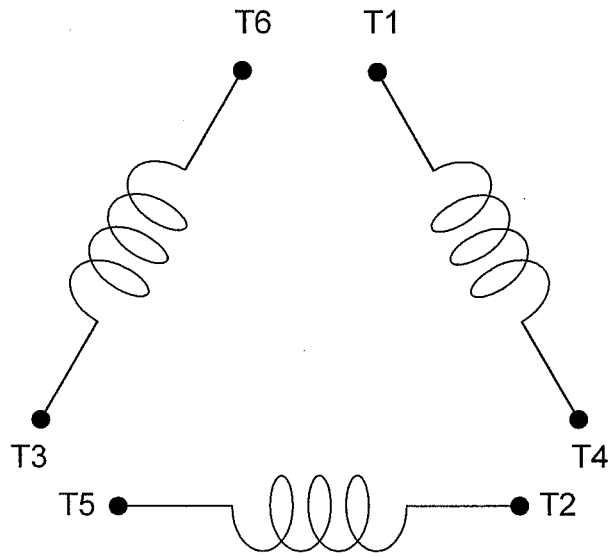
# CONNECTION DIAGRAM

MODEL

DATE :  
DEC.04.'02

For  $\Delta/\Delta$  connection

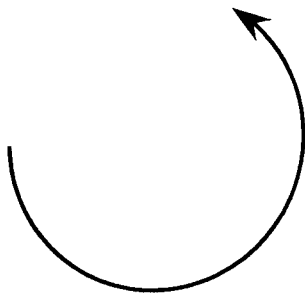
DAC-1545-1



**SCHEMATIC -  $\Delta/\Delta$  CONNECTION**

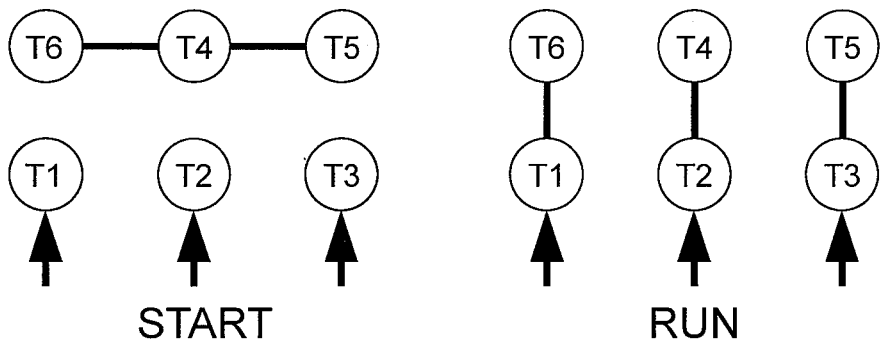
## ROTATION

(VIEWED FROM DRIVE END)

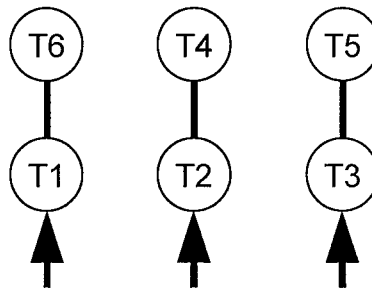


## CONNECTION

$\Delta-\Delta$  START



ACROSS-THE-LINE



承 認		
審 核	蔡	Dec.05.02
校 對	林	Dec.04.02
繪 製	林賢龍	DEC,04,'02

**東元電機股份有限公司**  
**TECO ELECTRIC & MACHINERY CO., LTD.**  
 TAIWAN R.O.C.

圖 號：  
**DAC-1545-1**