

6

5

4

3

2

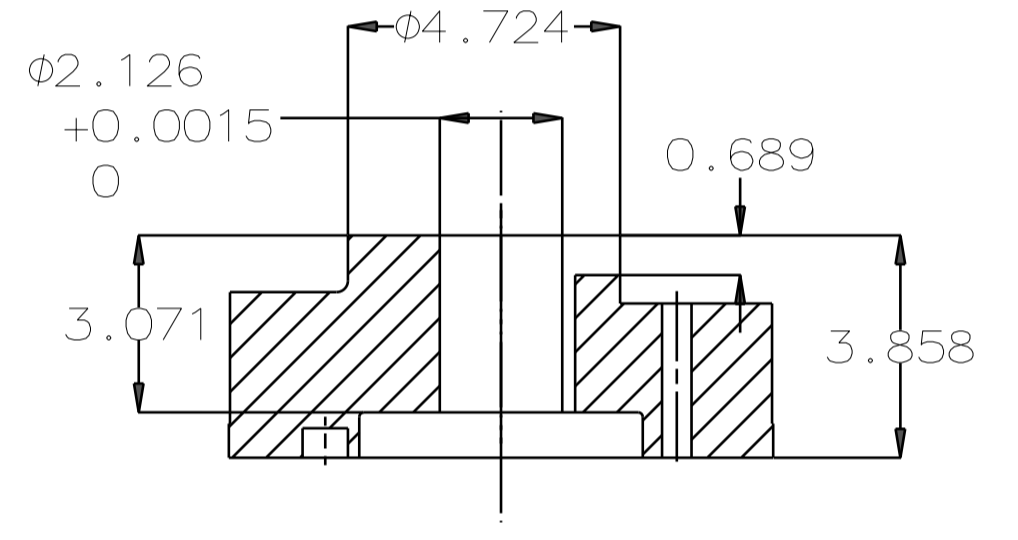
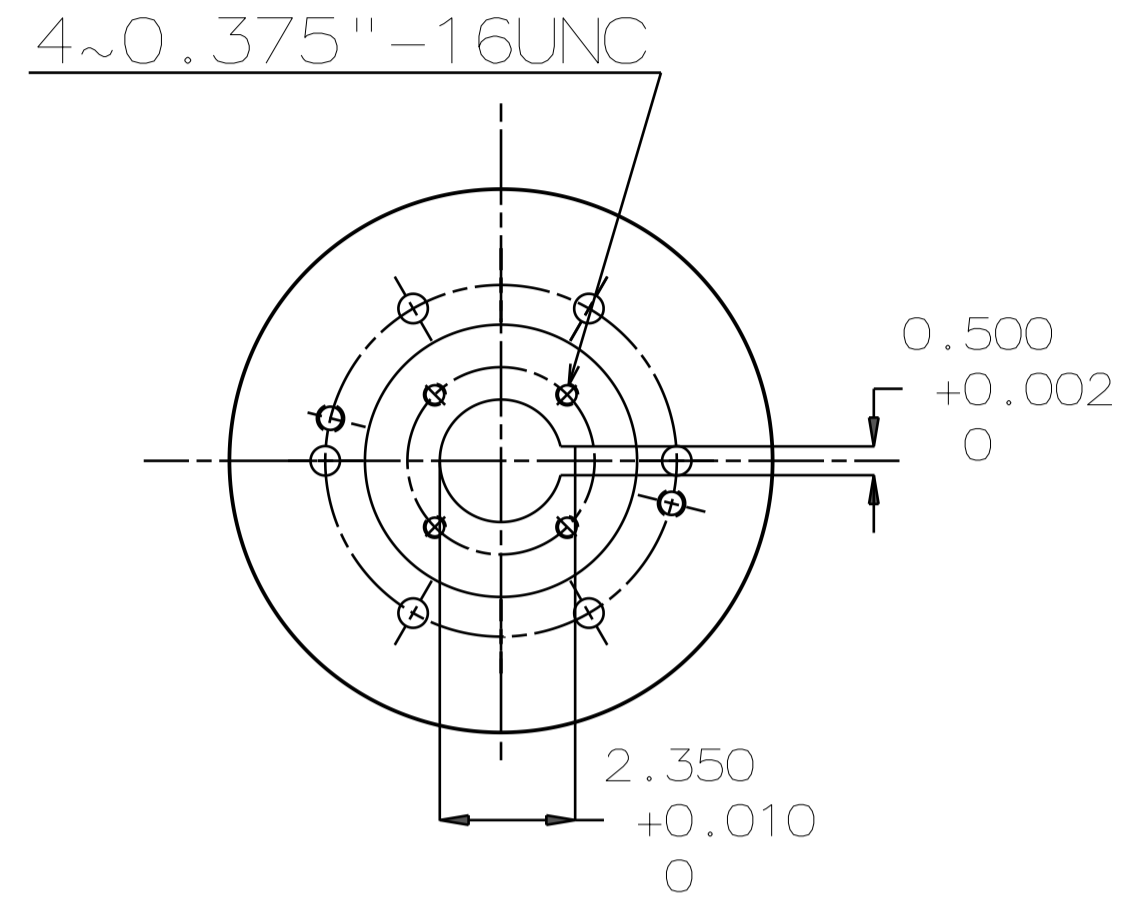
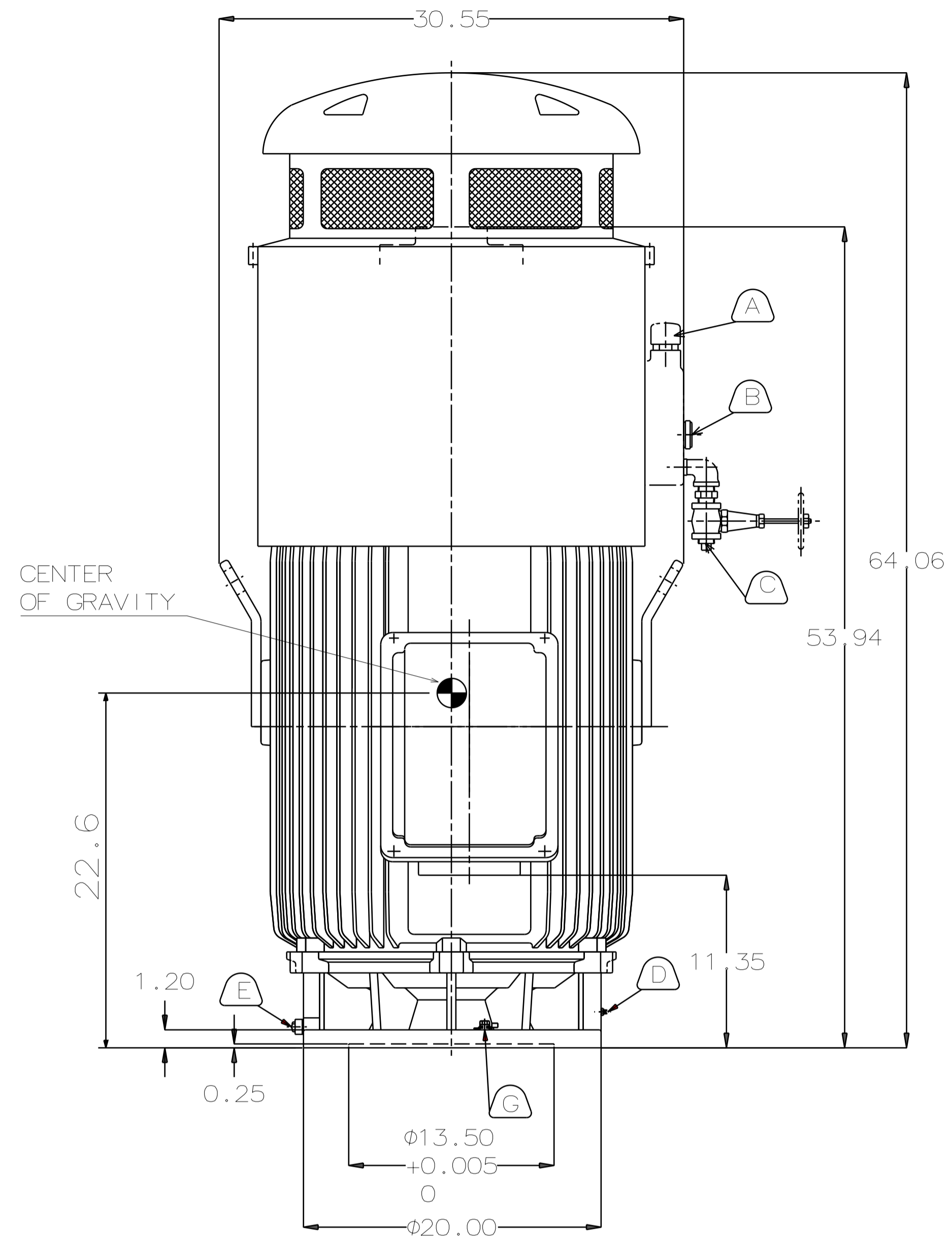
1

| TYPE | OUTPUT | | POLE | TIME RATING | VOLTAGE V | Hz | SYN. SPEED R.P.M |
|---------|--------|-------|------|-------------|-----------|----|------------------|
| | HP. | kW. | | | | | |
| AEEH-NH | 300 | 223.7 | 4 | CONT | 230/460 | 60 | 1800 |

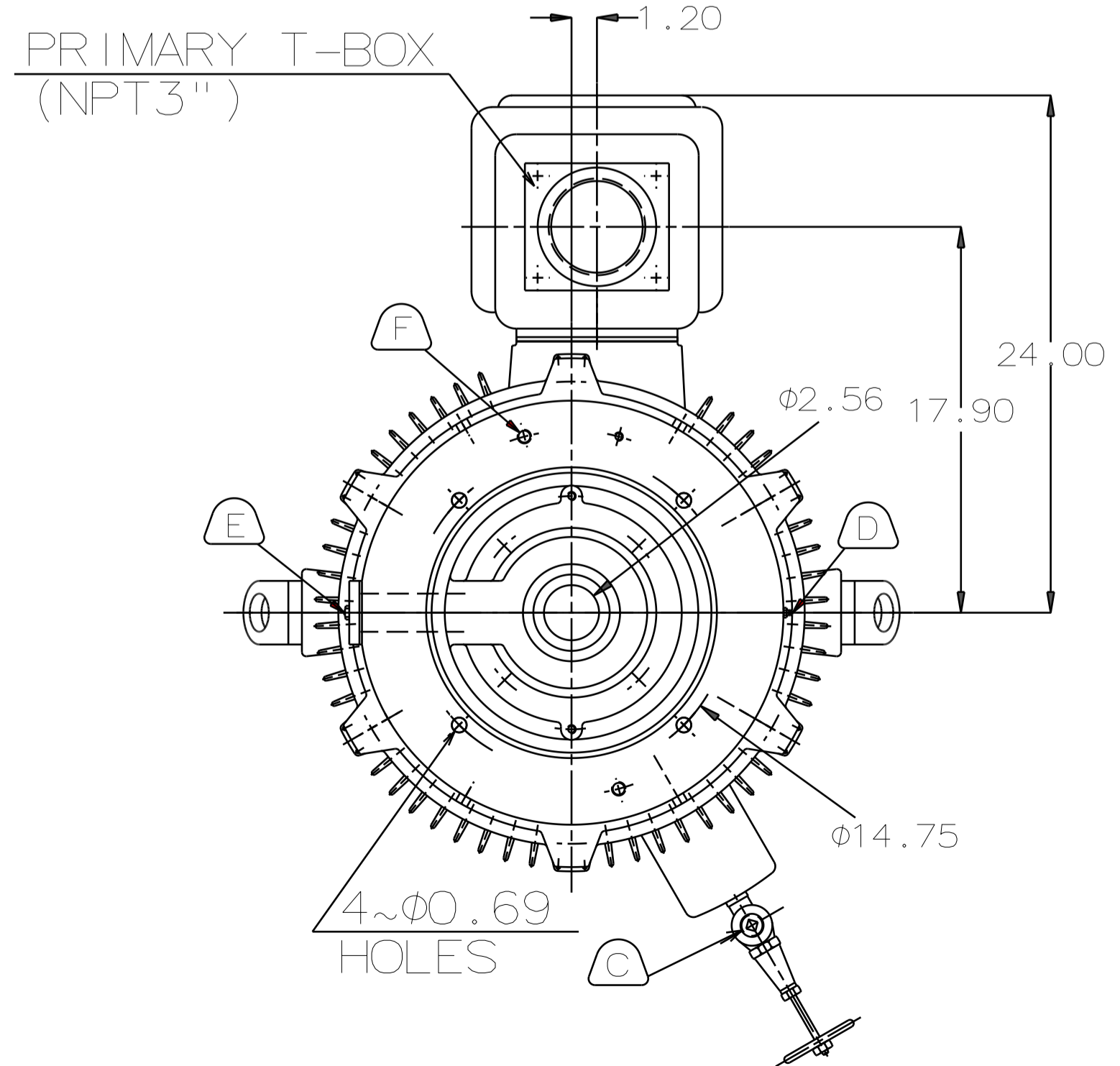
TOTALLY ENCLOSED FAN-COOLED VERTICAL HOLLOW SHAFT TYPE, SQUIRREL CAGE ROTOR

NOTE:

1. DIMENSIONS IN INCH
2. FRAME NO.449TP
3. F CLASS INSULATION, S.F.: 1.15
4. FOR DIRECT COUPLING.
5. BEARING SIZE:
UPPER BEARING: 7326B (UNINSULATED)
LOWER BEARING: 6318C3 (UNINSULATED)
6. LUBRICATION:
UPPER BEARING USE OIL.
OIL VISCOSITY: ISO VG68 [300SSU AT 100°F]
OIL QUANTITY: 1.8 GAL.
LOWER BEARING USE GREASE.(MOBIL POLYREX EM)
7. ROTATION: COUNTER-CLOCKWISE [VIEW FROM TOP].
8. WITH NON-REVERSE RATCHET MECHANISM.
9. WITH GIB KEY:0.500X0.500X3.071,1PCS
10. APPROXIMATE WEIGHT: 3070
11. REED FREQUENCY: 34 HZ
12. DOWNTHRUST: 10,100 LBS (L10-8800HRS)



COUPLING (ENLARGED VIEW)



- A OIL FILLER [UPPER BEARING]
- B OIL GAUGE [UPPER BEARING]
- C OIL DRAIN [UPPER BEARING]
- D GREASE INLET [LOWER BEARING]
- E GREASE DISCHARGER [LOWER BEARING]
- F 2~M16 VERTICAL JACKING HOLES 180° APART IN MOTOR BASE.
- G M10 TAPPED HOLE IN MOTOR BASE WITH GROUNDING TERMINAL [R38-10] & BOLT LOCATED AS SHOWN.

| | | | |
|-------|-------------|-------------------------|----------------|
| DATE | DEC 08 2016 | OUTLINE DIMENSIONS | |
| | VHTP3004 | 3-PHASE INDUCTION MOTOR | |
| DWN. | C.FU | APR.28.2015 | DWG NO. REV:00 |
| CHKD. | R.LEE | APR.28.2015 | 4B040L247 |
| APPD. | C.LIU | APR.28.2015 | |



6

5

4

3

2

1

| | | |
|------------------------|---|------------------------|
| ISSUED APR. 30 2015 | PERFORMANCE DATA HIGH THRUST SOLID SHAFT PUMP MOTORS LOW VOLTAGE SQUIRREL CAGE | MODEL AEEHED |
| REVISED | | |



TEFC, NEMA T-FRAME DESIGN B, CODE G, CLASS F, 40°C AMBIENT,
CONTINUOUS DUTY, 1.15 S.F. 230/460V 60HZ

ee C C 0 0 2 A

TYPICAL PERFORMANCE

(460V)

| HP | FULL LOAD RPM | FRAME SIZE (EHV) | EFFICIENCY | | | | POWER FACTOR | | | CURRENT | | TORQUE | | | ROTOR WR ² lb-ft ² | DOWN THRUST LBS | APPROX. ROTOR WEIGHT LBS | APPROX. WEIGHT LBS | REED FREQ. Hz |
|-----|---------------------|------------------------|----------------|------|-------------|-------------|--------------|-------------|-------------|--------------|-----------------|--------------|-----------------|----------------|--|-----------------------|-----------------------------------|--------------------------|---------------------|
| | | | FULL LOAD % | | 3/4 LOAD | 1/2 LOAD | FULL LOAD | 3/4 LOAD | 1/2 LOAD | FULL LOAD | LOCKED ROTOR | FULL LOAD | LOCKED ROTOR | BREAK- DOWN | | | | | |
| | | | NOM. | MIN. | NOM. | NOM. | % | % | % | A | A | lb-ft | %FLT | %FLT | | | | | |
| | | | | | | | | | | | | | | | | | | | |
| 100 | 1186 | 444VP | 95.0 | 94.1 | 94.9 | 94.5 | 79.8 | 74.8 | 64.8 | 123 | 791 | 442.9 | 100 | 220 | 56.8 | 10000 | 550 | 1980 | 43 |
| | 890 | 447VP | 94.5 | 93.6 | 94.4 | 94.0 | 76.0 | 71.0 | 61.0 | 130 | 791 | 590.2 | 100 | 220 | 119.6 | 12500 | 770 | 2450 | 44 |
| 125 | 1781 | 444VP | 95.4 | 94.5 | 95.3 | 94.9 | 85.6 | 80.6 | 70.6 | 143 | 988 | 368.7 | 100 | 210 | 36.1 | 8800 | 460 | 1990 | 43 |
| | 1186 | 445VP | 95.0 | 94.1 | 94.9 | 94.5 | 79.0 | 74.0 | 64.0 | 155 | 988 | 553.7 | 100 | 220 | 66.9 | 10000 | 610 | 2090 | 40 |
| | 889 | 447VP | 95.0 | 94.1 | 94.9 | 94.5 | 76.2 | 71.2 | 61.2 | 161 | 988 | 738.6 | 100 | 220 | 140.4 | 12500 | 850 | 2640 | 42 |
| 150 | 1781 | 445VP | 95.8 | 95.0 | 95.7 | 95.3 | 88.0 | 83.0 | 73.0 | 166 | 1186 | 442.4 | 100 | 210 | 47.9 | 8800 | 530 | 2050 | 40 |
| | 1188 | 447VP | 95.8 | 95.0 | 95.7 | 95.3 | 77.2 | 72.2 | 62.2 | 189 | 1186 | 663.3 | 100 | 210 | 97.7 | 11400 | 720 | 2500 | 43 |
| | 890 | 449VP | 95.0 | 94.1 | 94.9 | 94.5 | 76.6 | 71.6 | 61.6 | 192 | 1186 | 885.4 | 100 | 220 | 189.6 | 12500 | 1070 | 3060 | 35 |
| 200 | 1781 | 447VP | 96.2 | 95.4 | 96.1 | 95.7 | 82.5 | 77.5 | 67.5 | 235 | 1581 | 589.9 | 100 | 200 | 62.2 | 10000 | 610 | 2480 | 44 |
| | 1188 | 449VP | 95.8 | 95.0 | 95.7 | 95.3 | 76.6 | 71.6 | 61.6 | 254 | 1581 | 884.4 | 100 | 210 | 123.2 | 11400 | 850 | 2920 | 35 |
| 250 | 1783 | 449VP | 96.2 | 95.4 | 96.1 | 95.7 | 83.1 | 78.1 | 68.1 | 292 | 1977 | 736.6 | 100 | 210 | 79.3 | 10000 | 730 | 2910 | 35 |
| | 1188 | 449VP | 95.8 | 95.0 | 95.7 | 95.3 | 74.3 | 69.3 | 59.3 | 328 | 1977 | 1105.5 | 100 | 210 | 145.1 | 11400 | 940 | 3180 | 34 |
| 300 | 1783 | 449VP | 96.2 | 95.4 | 96.1 | 95.7 | 83.1 | 78.1 | 68.1 | 351 | 2372 | 883.9 | 100 | 220 | 93.0 | 10000 | 790 | 3140 | 34 |

NOTE : 1. THE ABOVE ARE TYPICAL VALUES BASED ON TEST ACCORDING TO ANSI/IEEE STANDARD 112 METHOD B.

2. BREAKDOWN & LOCKED ROTOR TORQUES ARE SHOWN AS AVERAGE EXPECTED VALUES.

3. EFFICIENCY, POWER FACTOR, SPEED AND TORQUE ARE THE SAME FOR OTHER VOLTAGES.
CURRENT VALUES VARY INVERSELY WITH VOLTAGE.

4. DECLARED EFFICIENCY HAVN'T TAKEN INTO ACCOUNT OF THRUST LOAD LOSSES

5. TOLERANCE ACCORDING TO NEMA MG1-12& IEC 34-1

6. THRUST LOAD LOSSES ESTIMATED OF ANGULAR CONTACT BALL BEARING AS FOLLOWS : (ACCORDING TO NEMA STANDARD MG1-12.7)

| FRAME SIZE | LOSS HP /100 RPM | RPM/1000 LB THRUST |
|-------------|------------------|--------------------|
| 444VP~445VP | | 0.0180 |
| 447VP~449VP | | 0.0194 |

7. REDUCING THE THRUST LOAD WILL INCREASE BEARING LIFE AS FOLLOWS :

| THRUST(%) | 100 | 82 | 73 | 62 | 56 | 51 |
|--------------------|------|-------|-------|-------|-------|-------|
| BEARING LIFE(Hrs.) | 8800 | 15000 | 20000 | 30000 | 40000 | 50000 |

8. DATA SUBJECT TO CHANGE WITHOUT NOTICE

9. **ee** C C 0 0 2 A IS SUITABLE FOR 4, 6 POLE UP TO 200HP.

10. 230/460 V UP TO 125HP, 150HP AND ABOVE, APPLY 460/(800) V ONLY

| | | | | | |
|-------|----------|--------------|--|---------|-------------------|
| APPD. | M.Y.HSU | APR. 30 2015 | TECO Electric & Machinery Co., Ltd. | DWG NO. | 3A057M071E |
| CHKD. | H.Y.WANG | APR. 30 2015 | | REV.00 | |
| DWN. | H.Y.WANG | APR. 30 2015 | | 1/1 | |

TECO

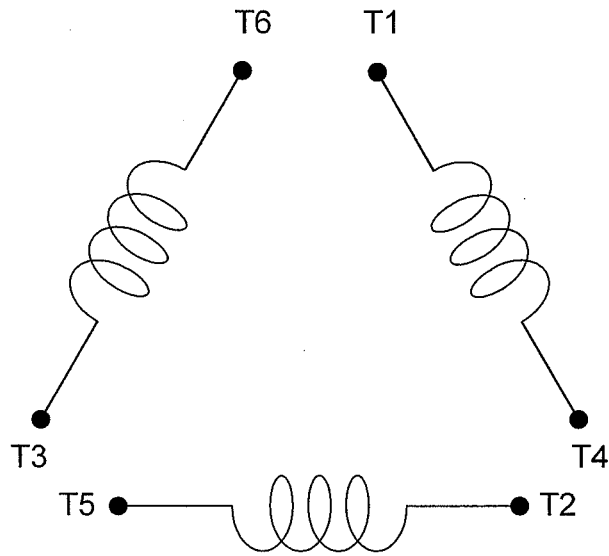
CONNECTION DIAGRAM

MODEL

DATE :
DEC.04.'02

For Δ/Δ connection

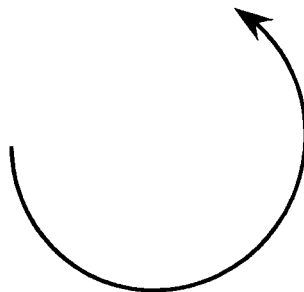
DAC-1545-1



SCHEMATIC - Δ/Δ CONNECTION

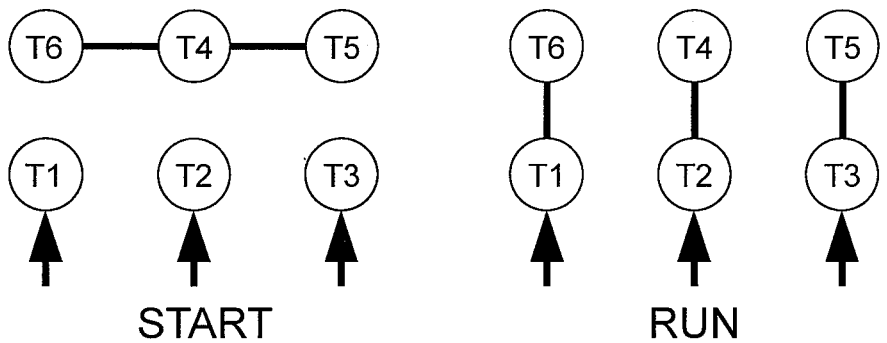
ROTATION

(VIEWED FROM DRIVE END)

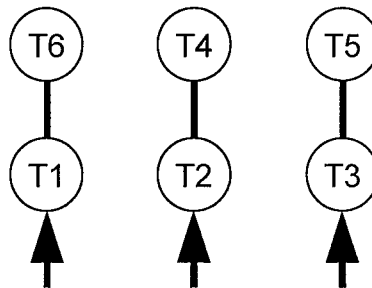


CONNECTION

$\Delta-\Delta$ START



ACROSS-THE-LINE



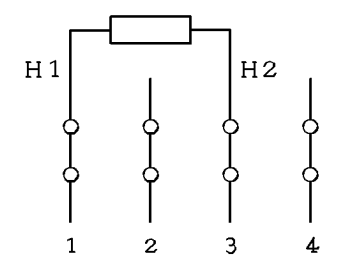
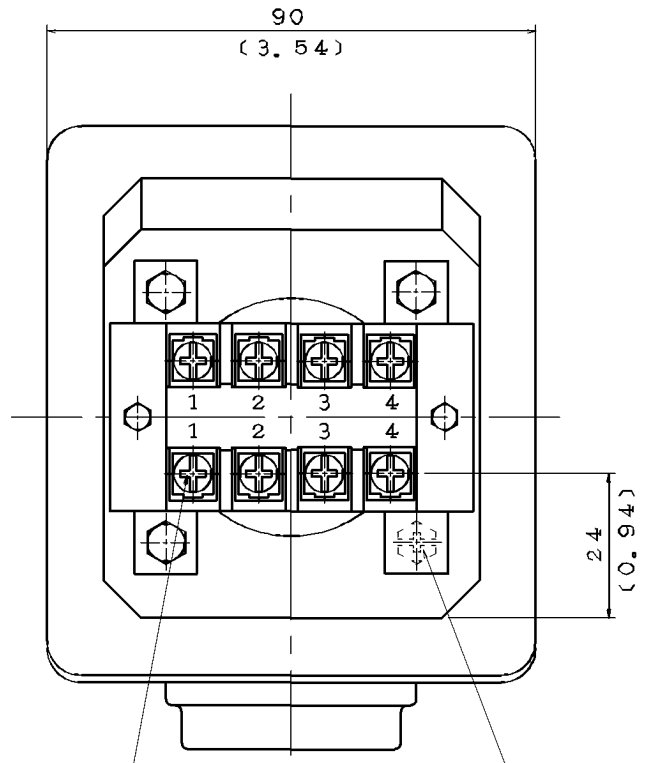
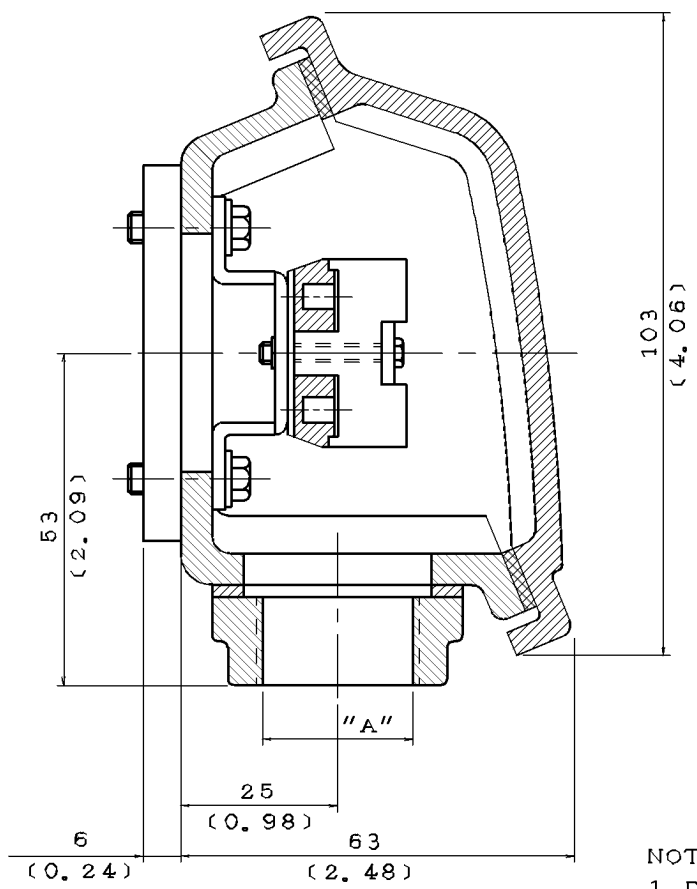
| | | |
|-----|-----|------------|
| 承 認 | | |
| 審 核 | 蔡 | Dec.05.02 |
| 校 對 | 林 | Dec.04.02 |
| 繪 製 | 林賢龍 | DEC,04,'02 |

東元電機股份有限公司
TECO ELECTRIC & MACHINERY CO., LTD.
 TAIWAN R.O.C.

圖 號：
DAC-1545-1

6 5 4 3 2 1

D
C
B
A



M4 SCREW FOR CONNECTION

M5 EARTH BOLT

- NOTE:
1. DIMENSIONS IN mm (inch)
 2. TW-06
 3. SPACE HEATER T-BOX.
 4. ENCLOSURE: IP55
 5. MATERIAL: CAST IRON

| ITEM | A |
|------|-----------|
| 01 | M20×1.5 |
| 02 | PF-0.5" |
| 03 | PF-0.75" |
| 04 | PT-0.5" |
| 05 | PT-0.75" |
| 06 | NPT-0.5" |
| 07 | NPT-0.75" |
| 08 | M25×1.5 |
| 09 | PF1" |
| 10 | NPT1" |
| 11 | PG16 |

DATE _____ SCHEMATIC DRAWING
TERMINAL BOX

| | | |
|-------|----------|------------|
| DWN. | H. HUANG | JUN 19 200 |
| CHKD. | H. HUANG | JUN 19 200 |
| APPD. | C. WANG | JUN 19 200 |

TECO Westinghouse

DWG NO. 3A040U272 REV:09

6 5 4 3 2 1