

**BALDOR® • RELIANCE** 

**Product Information Packet**

**VNM3541**

**.75HP,3480RPM,3PH,60HZ,56C,3520M,TENV,F1**

Part Detail							
Revision:	U	Status:	PRD/A	Change #:		Proprietary:	No
Type:	AC	Elec. Spec:	35WGR090	CD Diagram:	CD0005	Mfg Plant:	
Mech. Spec:	35E010	Layout:	35LYE010	Poles:	02	Created Date:	01-08-2008
Base:	N	Eff. Date:	06-11-2018	Leads:	9#18		

Specs			
Catalog Number:	VNM3541	Heater Indicator:	No Heater
Enclosure:	TENV	Insulation Class:	H
Frame:	56C	Inverter Code:	Inverter Ready
Frame Material:	Steel	KVA Code:	N
Output @ Frequency:	.750 HP @ 60 HZ	Lifting Lugs:	No Lifting Lugs
Synchronous Speed @ Frequency:	3600 RPM @ 60 HZ	Locked Bearing Indicator:	Locked Bearing
Voltage @ Frequency:	208.0 V @ 60 HZ	Motor Lead Quantity/Wire Size:	9 @ 18 AWG
	230.0 V @ 60 HZ	Motor Lead Exit:	Ko Box
	460.0 V @ 60 HZ	Motor Lead Termination:	Flying Leads
XP Class and Group:	None	Motor Type:	3520M
XP Division:	Not Applicable	Mounting Arrangement:	F1
Agency Approvals:	UR	Power Factor:	82
	CSA	Product Family:	General Purpose
Auxillary Box:	No Auxillary Box	Pulley End Bearing Type:	Ball
Auxillary Box Lead Termination:	None	Pulley Face Code:	C-Face
Base Indicator:	No Mounting	Pulley Shaft Indicator:	Standard
Bearing Grease Type:	Polyrex EM (-20F +300F)	Rodent Screen:	None
Blower:	None	Shaft Extension Location:	Pulley End

<b>Current @ Voltage:</b>	1.000 A @ 460.0 V	<b>Shaft Ground Indicator:</b>	No Shaft Grounding
	2.000 A @ 230.0 V	<b>Shaft Rotation:</b>	Reversible
	2.200 A @ 208.0 V	<b>Shaft Slinger Indicator:</b>	No Slinger
<b>Design Code:</b>	B	<b>Speed Code:</b>	Single Speed
<b>Drip Cover:</b>	No Drip Cover	<b>Motor Standards:</b>	NEMA
<b>Duty Rating:</b>	CONT	<b>Starting Method:</b>	Direct on line
<b>Electrically Isolated Bearing:</b>	Not Electrically Isolated	<b>Thermal Device - Bearing:</b>	None
<b>Feedback Device:</b>	NO FEEDBACK	<b>Thermal Device - Winding:</b>	None
<b>Front Face Code:</b>	Standard	<b>Vibration Sensor Indicator:</b>	No Vibration Sensor
<b>Front Shaft Indicator:</b>	None	<b>Winding Thermal 1:</b>	None
		<b>Winding Thermal 2:</b>	None

Nameplate NP1256L										
CAT.NO.	VNM3541									
SPEC.	35E010R090G2									
HP	.75									
VOLTS	208-230/460									
AMP	2.2-2/1									
RPM	3480									
FRAME	56C				HZ	60			PH	3
SER.F.	1.25		CODE	N	DES	B		CLASS	H	
NEMA-NOM-EFF	84		PF	82						
RATING	40C AMB-CONT									
CC								USABLE AT 208V	2.2	
DE	6205				ODE	6203				
ENCL	TENV		SN							
	SFA 2.6-2.4/1.2									

Parts List		
Part Number	Description	Quantity
SA166778	SA 35E010R090G2	1.000 EA
RA155140	RA 35E010R090G2	1.000 EA
S/P111-000-002	CORONA TEST, SUPER E MOTORS - FT. SMITH	1.000 EA
NS2512A01	INSULATOR, CONDUIT BOX X	1.000 EA
35CB3007	35 CB CASTING W/.88 DIA. LEAD HOLE	1.000 EA
36GS1000SP	GASKET-CONDUIT BOX, .06 THICK #SV-330 LE	1.000 EA
51XB1016A07	10-16 X 7/16 HXWSSLD SERTYB	2.000 EA
11XW1032G06	10-32 X .38, TAPTITE II, HEX WSHR SLTD U	1.000 EA
35EP3122F00	MASTER ODE,203 BRG,#26 DRN	1.000 EA
HW5100A03	WAVY WASHER (W1543-017)	1.000 EA
35EP3307F00	MASTER DE,205 BRG,.998SH,#26 DRN	1.000 EA
51XN1032A20	10-32 X 1 1/4 HX WS SL SR	2.000 EA
35CB4521GX	CONDUIT BOX LID KIT **ORDER INDIV PARTS	1.000 EA
51XW0832A07	8-32 X .44, TAPTITE II, HEX WSHR SLTD SE	4.000 EA
HA7000A04	KEY RETAINER 0.625 DIA SHAFTS	1.000 EA
85XU0407S04	4X1/4 U DRIVE PIN STAINLESS	2.000 EA
MJ1000A02	GREASE, MOBIL POLYREX EM - 124047	0.050 LB
HW2501D13	KEY, 3/16 SQ X 1.375	1.000 EA
MG1000G27	MED CHARCOAL METALLIC GREY 400-0096	0.017 GA
HA3100A12	THRUBOLT 10-32 X 7.375	4.000 EA
LC0005E01	CONN.DIA./WARNING LABEL (LC0005/LB1119N)	1.000 EA
NP1256L	ALUM UL CSA CC INDUSTRIAL MOTOR A60	1.000 EA
35PA1066	PKG GRP, PRINT PK1008A06	1.000 EA
PK3083	STYROFOAM PACKING CRADLE	1.000 EA

<b>Parts List (continued)</b>		
<b>Part Number</b>	<b>Description</b>	<b>Quantity</b>
MN416A01	TAG-INSTAL-MAINT no wire (2100/bx) 4/22	1.000 EA
PE-0000001	ZRTG PE ASSEMBLY	1.000 EA
PK3088	MICROFOAM, 8"X"8 PERF. SHEETS	1.000 EA
FE-0000001	ZRTG FE ASSEMBLY	1.000 EA

**AC Induction Motor Performance Data**

Record # 37297

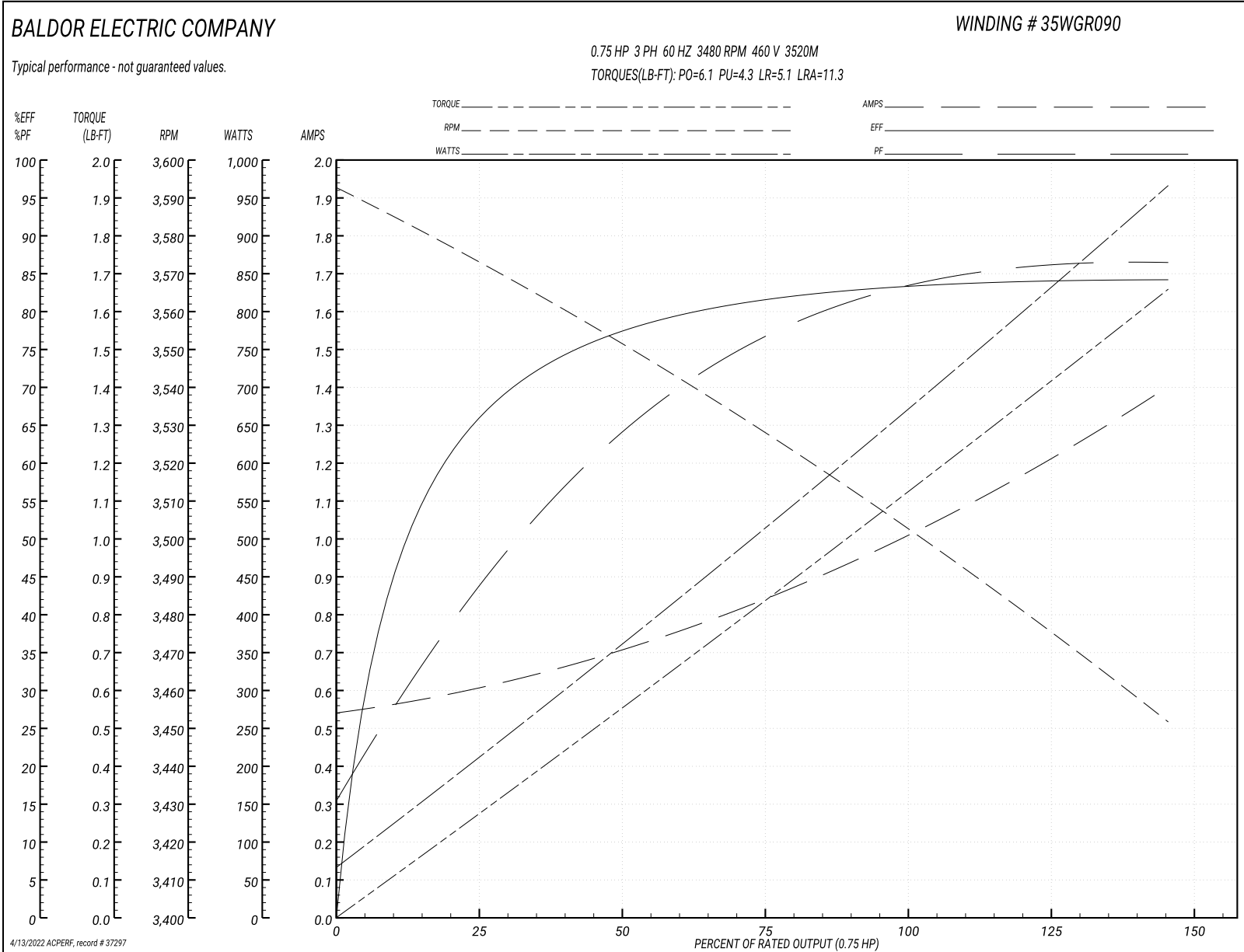
Typical performance - not guaranteed values

Winding: 35WGR090-R016			Type: 3520M			Enclosure: TENV		
<b>Nameplate Data</b>				<b>460 V, 60 Hz: High Voltage Connection</b>				
Rated Output (HP)	.75		Full Load Torque	1.12 LB-FT				
Volts	208-230/460		Start Configuration	direct on line				
Full Load Amps	2.2-2/1		Breakdown Torque	6.1 LB-FT				
R.P.M.	3480		Pull-up Torque	4.3 LB-FT				
Hz	60 Phase	3	Locked-rotor Torque	5.1 LB-FT				
NEMA Design Code	B	KVA Code	N	Starting Current	11.3 A			
Service Factor (S.F.)	1.25		No-load Current	0.545 A				
NEMA Nom. Eff.	84	Power Factor	82	Line-line Res. @ 25°C	15.4 Ω			
Rating - Duty	40C AMB-CONT		Temp. Rise @ Rated Load	52°C				
S.F. Amps	2.6-2.4/1.2		Temp. Rise @ S.F. Load	63°C				
			Locked-rotor Power Factor	53				
			Rotor inertia	0.0553 LB-FT <sup>2</sup>				

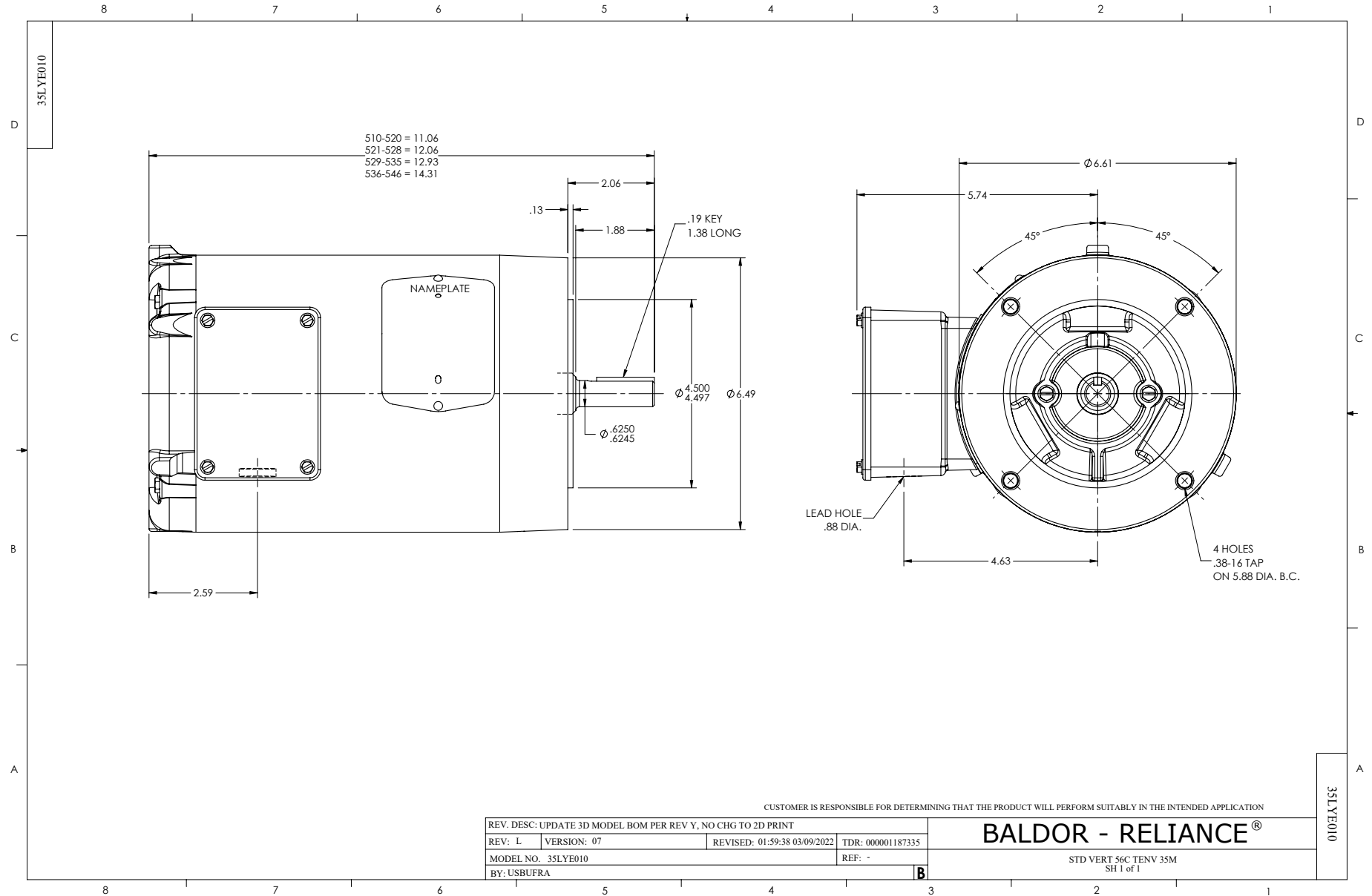
**Load Characteristics 460 V, 60 Hz, 0.75 HP**

% of Rated Load	25	50	75	100	125	150	S.F.
Power Factor	45	65	77	82	87	86	87
Efficiency	65	77.1	81.7	83.6	84.5	83.9	84.5
Speed	3573	3550	3528	3503	3478	3451	3478
Line amperes	0.599	0.71	0.848	1.02	1.18	1.41	1.18

Performance Graph at 460V, 60Hz, 0.75HP Typical performance - Not guaranteed values







CD0005

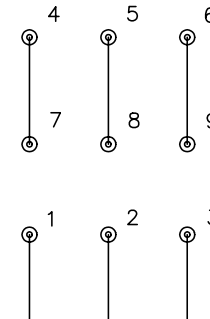


LOW VOLTAGE  
(2Y)



LINE

HIGH VOLTAGE  
(1Y)



LINE

NOTES:

1. INTERCHANGE ANY TWO LINE LEADS TO REVERSE ROTATION.
2. OPTIONAL THERMOSTATS ARE PROVIDED WHEN SPECIFIED.
3. ACTUAL NUMBER OF INTERNAL PARALLEL CIRCUITS MAY BE A MULTIPLE OF THOSE SHOWN ABOVE.
4. LEAD COLORS ARE OPTIONAL. LEADS MUST ALWAYS BE NUMBERED AS SHOWN.

REV. DESC: REVISE TO SHOW OPTIONAL COLORS			
REV. LTR: E	BY: JLP	REVISED: 01/19/99 10:15	TDR: 0171435
90000		FILE: AAA00005140	MDL: -
		MTL: -	

**BALDOR ELECTRIC Co.**

3PH, DV, 9 LEADS

CD0005