



# TORQUE AND CURRENT VS SPEED CURVE

Three Phase Induction Motor - Squirrel Cage

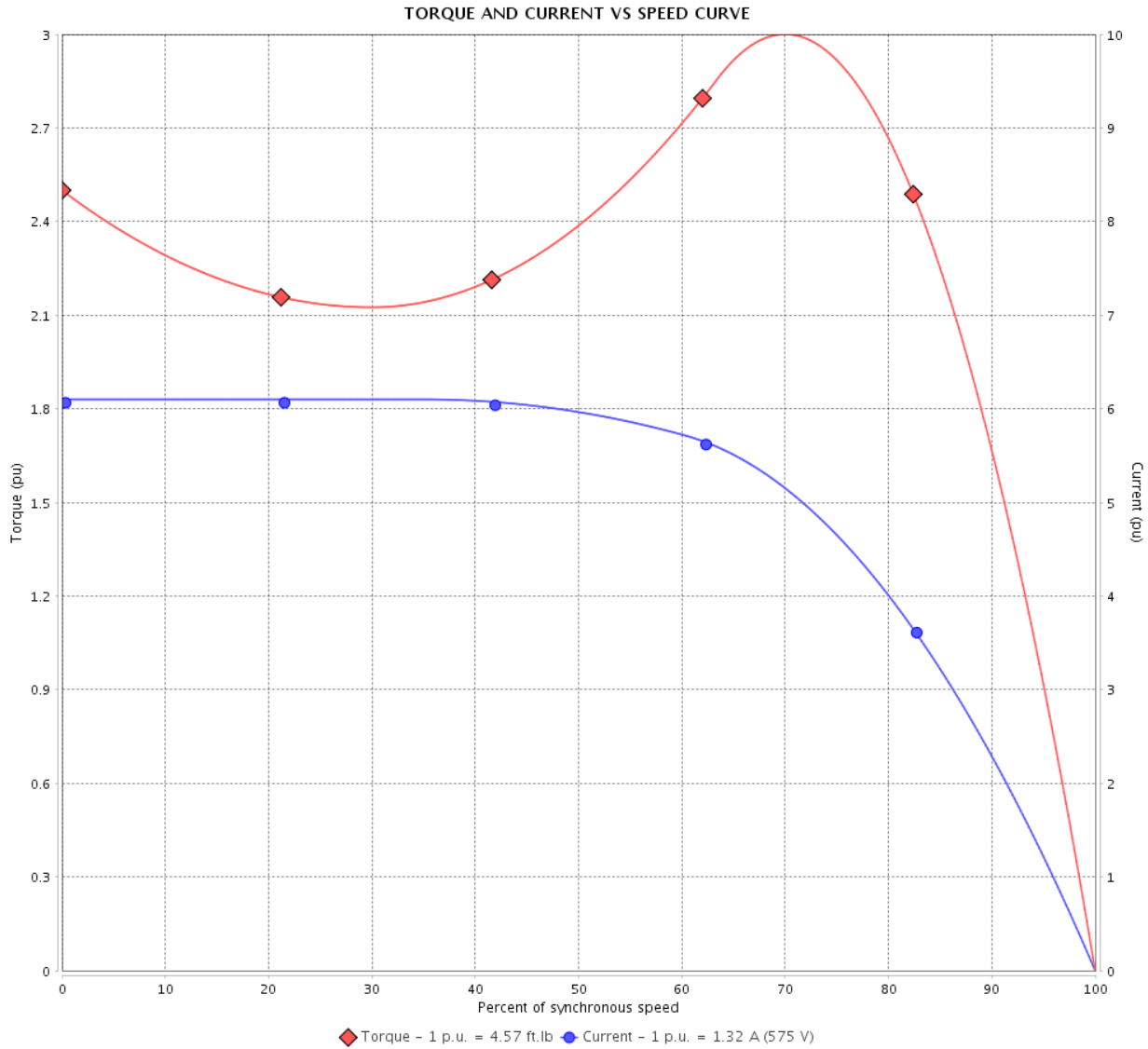


Customer :

Product line : NEMA Premium Efficiency Three-Phase

Product code : 12795528

Catalog # : 001120T3H145T-S



Performance : 575 V 60 Hz 6P

|                     |              |                       |                   |
|---------------------|--------------|-----------------------|-------------------|
| Rated current       | : 1.32 A     | Moment of inertia (J) | : 0.1419 sq.ft.lb |
| LRC                 | : 6.1        | Duty cycle            | : Cont.(S1)       |
| Rated torque        | : 4.57 ft.lb | Insulation class      | : F               |
| Locked rotor torque | : 250 %      | Service factor        | : 1.15            |
| Breakdown torque    | : 300 %      | Temperature rise      | : 80 K            |
| Rated speed         | : 1150 rpm   | Design                | : B               |

Locked rotor time : 43s (cold) 24s (hot)

| Rev.         | Changes Summary | Performed | Checked       | Date     |
|--------------|-----------------|-----------|---------------|----------|
|              |                 |           |               |          |
| Performed by |                 |           | Page<br>2 / 6 | Revision |
| Checked by   |                 |           |               |          |
| Date         | 11/04/2022      |           |               |          |

# LOAD PERFORMANCE CURVE

## Three Phase Induction Motor - Squirrel Cage

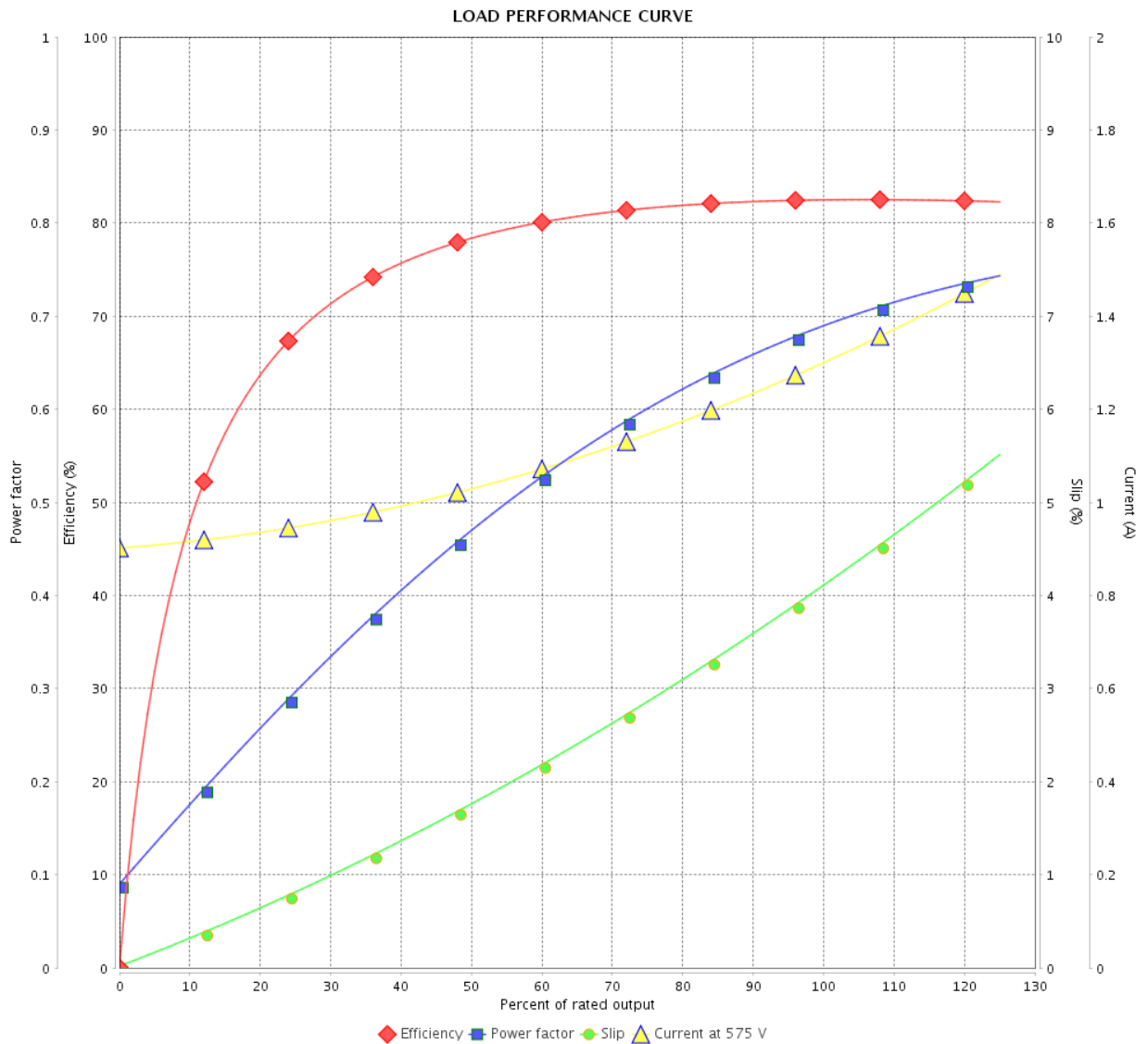


Customer :

Product line : NEMA Premium Efficiency Three-Phase

Product code : 12795528

Catalog # : 00112OT3H145T-S



Performance : 575 V 60 Hz 6P

Rated current : 1.32 A  
 LRC : 6.1  
 Rated torque : 4.57 ft.lb  
 Locked rotor torque : 250 %  
 Breakdown torque : 300 %  
 Rated speed : 1150 rpm

Moment of inertia (J) : 0.1419 sq.ft.lb  
 Duty cycle : Cont.(S1)  
 Insulation class : F  
 Service factor : 1.15  
 Temperature rise : 80 K  
 Design : B

| Rev.         | Changes Summary | Performed  | Checked | Date     |
|--------------|-----------------|------------|---------|----------|
|              |                 |            |         |          |
| Performed by |                 | Page       |         | Revision |
| Checked by   |                 | 3 / 6      |         |          |
| Date         |                 | 11/04/2022 |         |          |

# THERMAL LIMIT CURVE



## Three Phase Induction Motor - Squirrel Cage

Customer :

Product line : NEMA Premium Efficiency Three-Phase  
Product code : 12795528  
Catalog # : 00112OT3H145T-S

Performance : 575 V 60 Hz 6P

|                             |   |
|-----------------------------|---|
| Rated current : 1.32 A      | Moment of inertia (J) : 0.1419 sq.ft.lb |
| LRC : 6.1                   | Duty cycle : Cont.(S1)                  |
| Rated torque : 4.57 ft.lb   | Insulation class : F                    |
| Locked rotor torque : 250 % | Service factor : 1.15                   |
| Breakdown torque : 300 %    | Temperature rise : 80 K                 |
| Rated speed : 1150 rpm      | Design : B                              |

Heating constant

Cooling constant

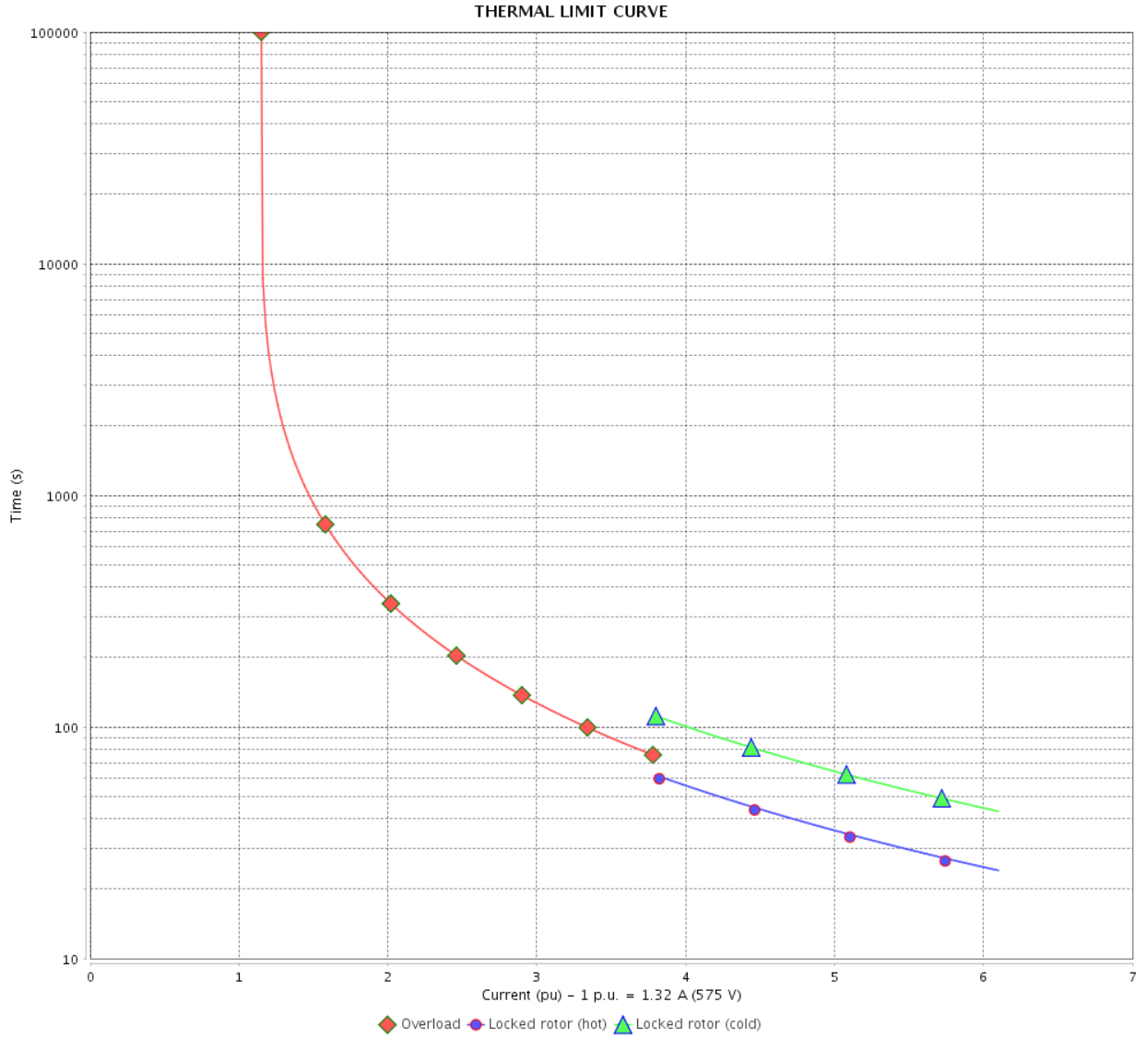
| Rev.         | Changes Summary | Performed | Checked | Date     |
|--------------|-----------------|-----------|---------|----------|
| Performed by |                 |           |         |          |
| Checked by   |                 |           | Page    | Revision |
| Date         | 11/04/2022      |           | 4 / 6   |          |

# THERMAL LIMIT CURVE

Three Phase Induction Motor - Squirrel Cage



Customer : \_\_\_\_\_



| Rev.         | Changes Summary | Performed     | Checked | Date     |
|--------------|-----------------|---------------|---------|----------|
|              |                 |               |         |          |
| Performed by |                 | Page<br>5 / 6 |         | Revision |
| Checked by   |                 |               |         |          |
| Date         |                 |               |         |          |

# VFD OPERATION CURVE

Three Phase Induction Motor - Squirrel Cage



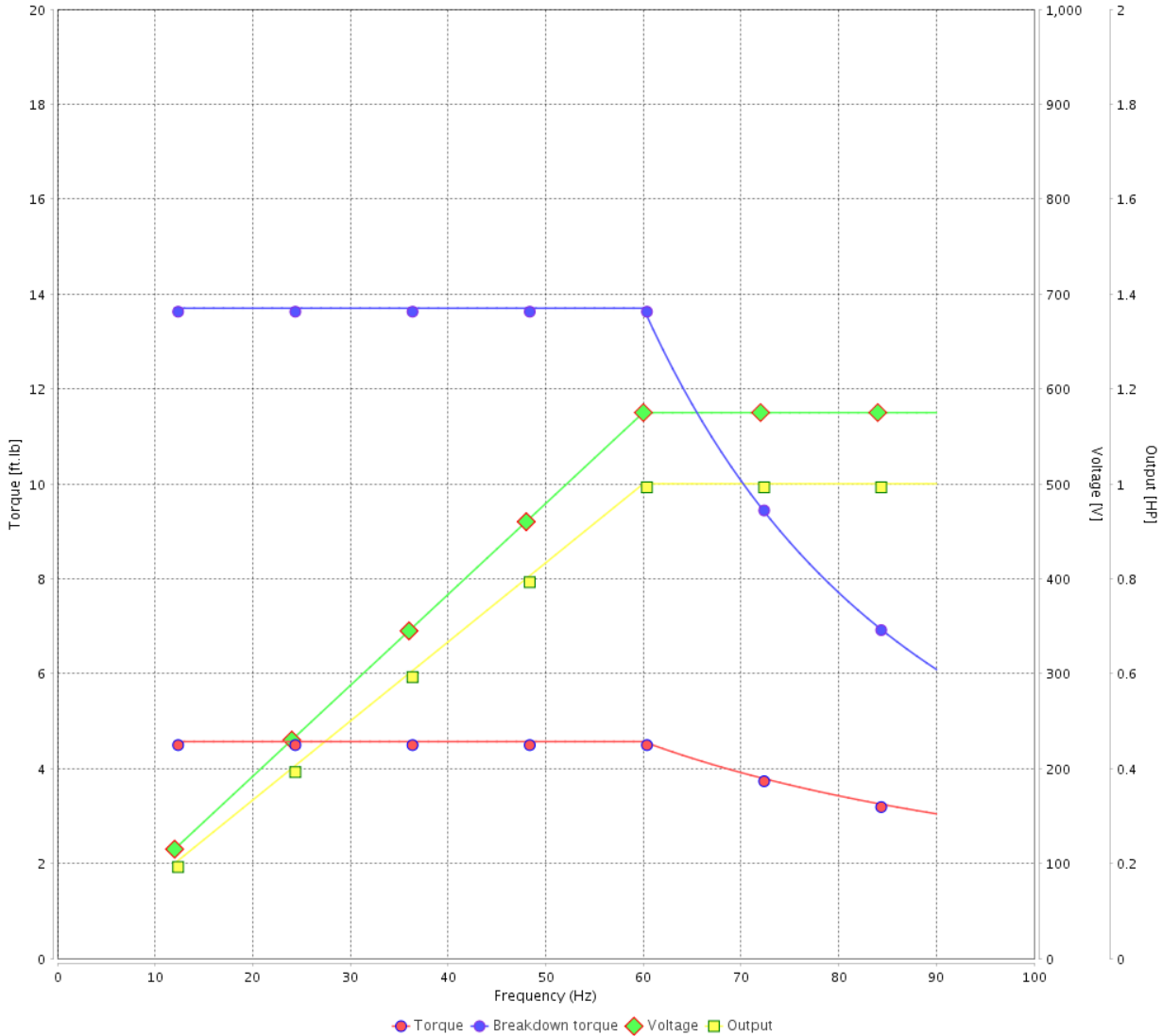
Customer : \_\_\_\_\_

Product line : NEMA Premium Efficiency Three-Phase

Product code : 12795528

Catalog # : 001120T3H145T-S

VFD OPERATION CURVE



Performance : 575 V 60 Hz 6P

Rated current : 1.32 A  
 LRC : 6.1  
 Rated torque : 4.57 ft.lb  
 Locked rotor torque : 250 %  
 Breakdown torque : 300 %  
 Rated speed : 1150 rpm

Moment of inertia (J) : 0.1419 sq.ft.lb  
 Duty cycle : Cont.(S1)  
 Insulation class : F  
 Service factor : 1.15  
 Temperature rise : 80 K  
 Design : B

| Rev.         | Changes Summary | Performed | Checked       | Date     |
|--------------|-----------------|-----------|---------------|----------|
|              |                 |           |               |          |
| Performed by |                 |           | Page<br>6 / 6 | Revision |
| Checked by   |                 |           |               |          |
| Date         | 11/04/2022      |           |               |          |

1 2 3 4 5 6

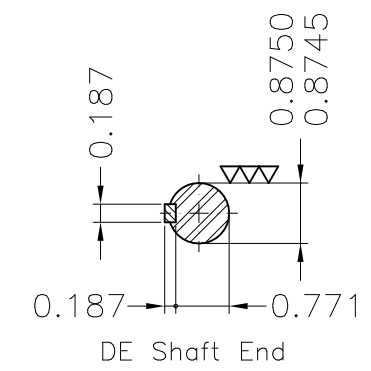
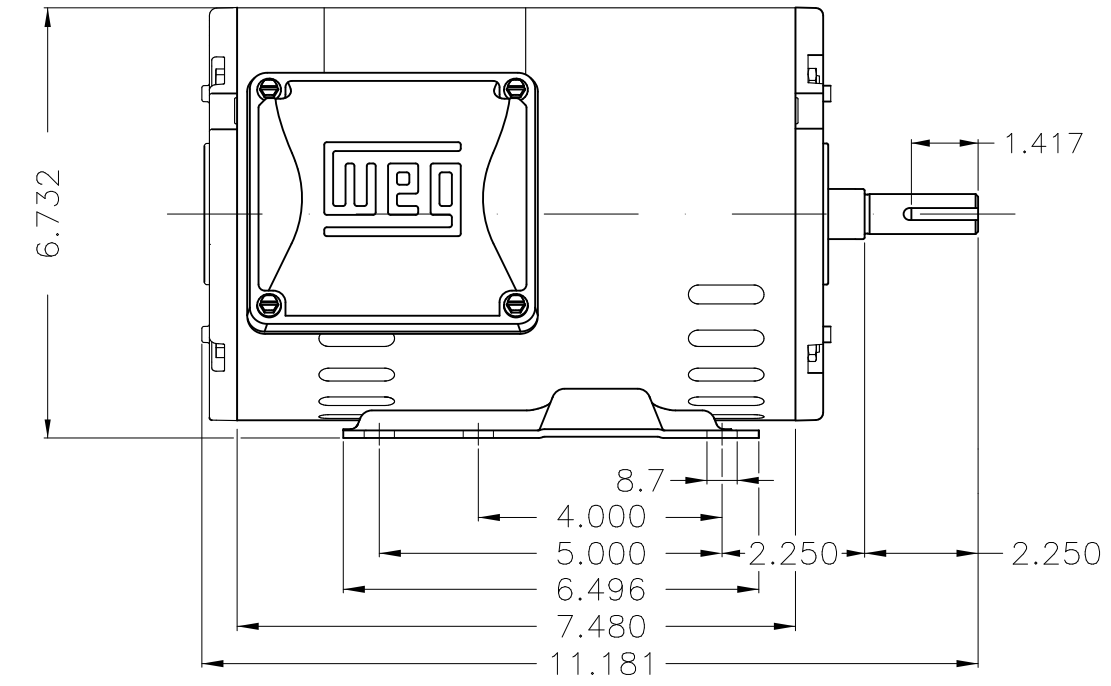
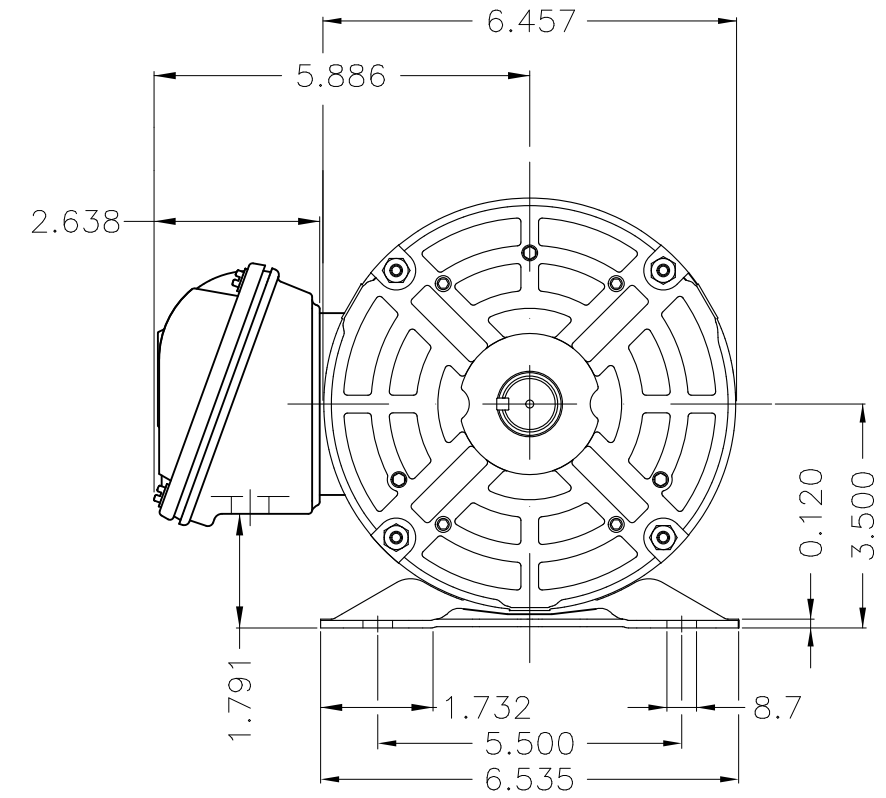
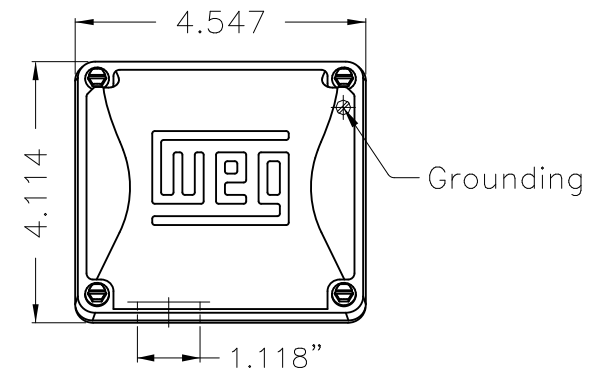
A

B

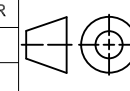
C

D

E




Color Munsell N 1 matte black  
 Painting plan 207N  
 Mounting F-1/B3R(D)

| ECM      | LOC       | SUMMARY OF MODIFICATIONS   | EXECUTED            | CHECKED | RELEASED | DATE | VER |
|----------|-----------|--|---------------------|---------|----------|------|-----|
| EXECUTED | PIRWBUSER |  THREE PH. MOTOR ROLLED STEEL PREM. EFF.<br>FRAME 143/5T IP21 ODP |                     |         |          |      |     |
| CHECKED  |           |  |                     |         |          |      |     |
| RELEASED |           |  |                     |         |          |      |     |
| REL DT.  | WMO       | Jaragua do Sul   | Product Engineering | SHEET   | 1 / 1    |      |     |

1 HP 06 Poles 60 Hz

A

PREVIEW  
 WDD



Dimensions in inches XME A3