

TORQUE AND CURRENT VS SPEED CURVE

Three Phase Induction Motor - Squirrel Cage



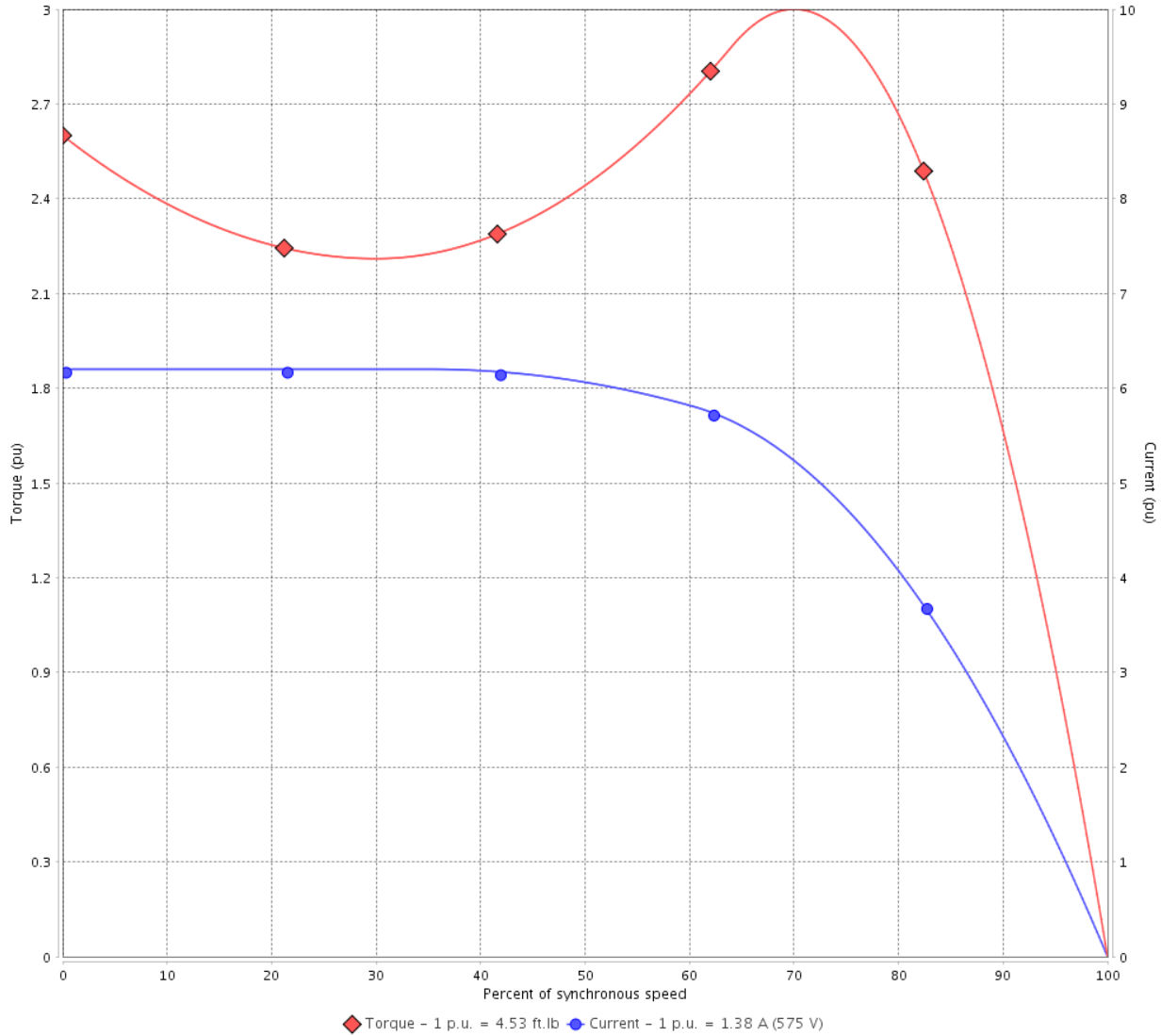
Customer :

Product line : NEMA Premium Efficiency Three-Phase

Product code : 11433736

Catalog # : 00112ST3HIE145T-W22

TORQUE AND CURRENT VS SPEED CURVE



Performance : 575 V 60 Hz 6P

Rated current	: 1.38 A	Moment of inertia (J)	: 0.1595 sq.ft.lb
LRC	: 6.2	Duty cycle	: Cont.(S1)
Rated torque	: 4.53 ft.lb	Insulation class	: F
Locked rotor torque	: 260 %	Service factor	: 1.25
Breakdown torque	: 300 %	Temperature rise	: 80 K
Rated speed	: 1160 rpm	Design	: B

Locked rotor time : 50s (cold) 28s (hot)

Rev.	Changes Summary	Performed	Checked	Date
Performed by			Page 2 / 6	Revision
Checked by				
Date	11/04/2022			

LOAD PERFORMANCE CURVE

Three Phase Induction Motor - Squirrel Cage

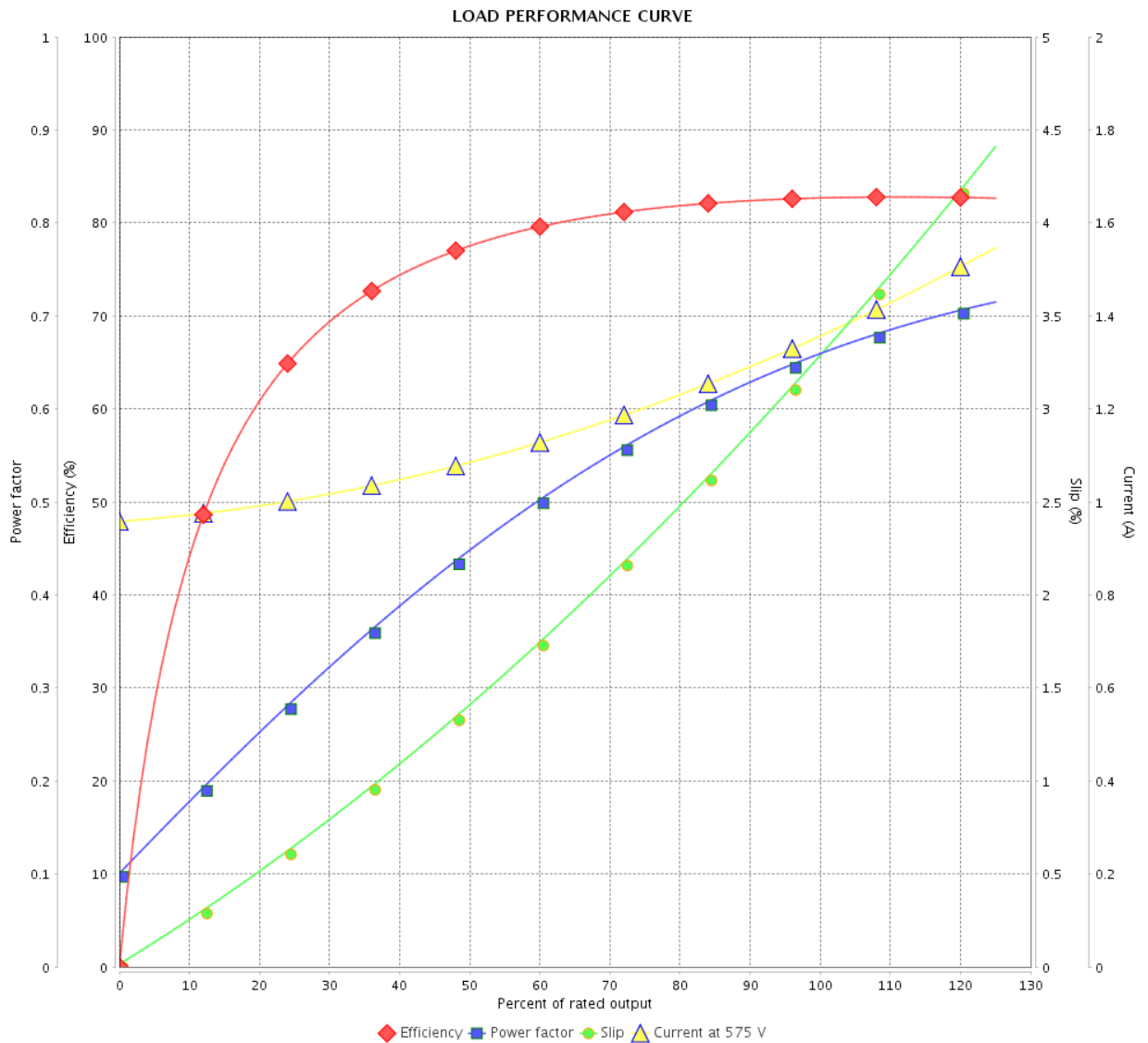


Customer :

Product line : NEMA Premium Efficiency Three-Phase

Product code : 11433736

Catalog # : 00112ST3HIE145T-W22



Performance : 575 V 60 Hz 6P

Rated current : 1.38 A
 LRC : 6.2
 Rated torque : 4.53 ft.lb
 Locked rotor torque : 260 %
 Breakdown torque : 300 %
 Rated speed : 1160 rpm

Moment of inertia (J) : 0.1595 sq.ft.lb
 Duty cycle : Cont.(S1)
 Insulation class : F
 Service factor : 1.25
 Temperature rise : 80 K
 Design : B

Rev.	Changes Summary	Performed	Checked	Date
Performed by			Page	Revision
Checked by			3 / 6	
Date	11/04/2022			

THERMAL LIMIT CURVE



Three Phase Induction Motor - Squirrel Cage

Customer :

Product line : NEMA Premium Efficiency Three-Phase
 Product code : 11433736
 Catalog # : 00112ST3HIE145T-W22

Performance : 575 V 60 Hz 6P

Rated current : 1.38 A	Moment of inertia (J) : 0.1595 sq.ft.lb
LRC : 6.2	Duty cycle : Cont.(S1)
Rated torque : 4.53 ft.lb	Insulation class : F
Locked rotor torque : 260 %	Service factor : 1.25
Breakdown torque : 300 %	Temperature rise : 80 K
Rated speed : 1160 rpm	Design : B

Heating constant

Cooling constant

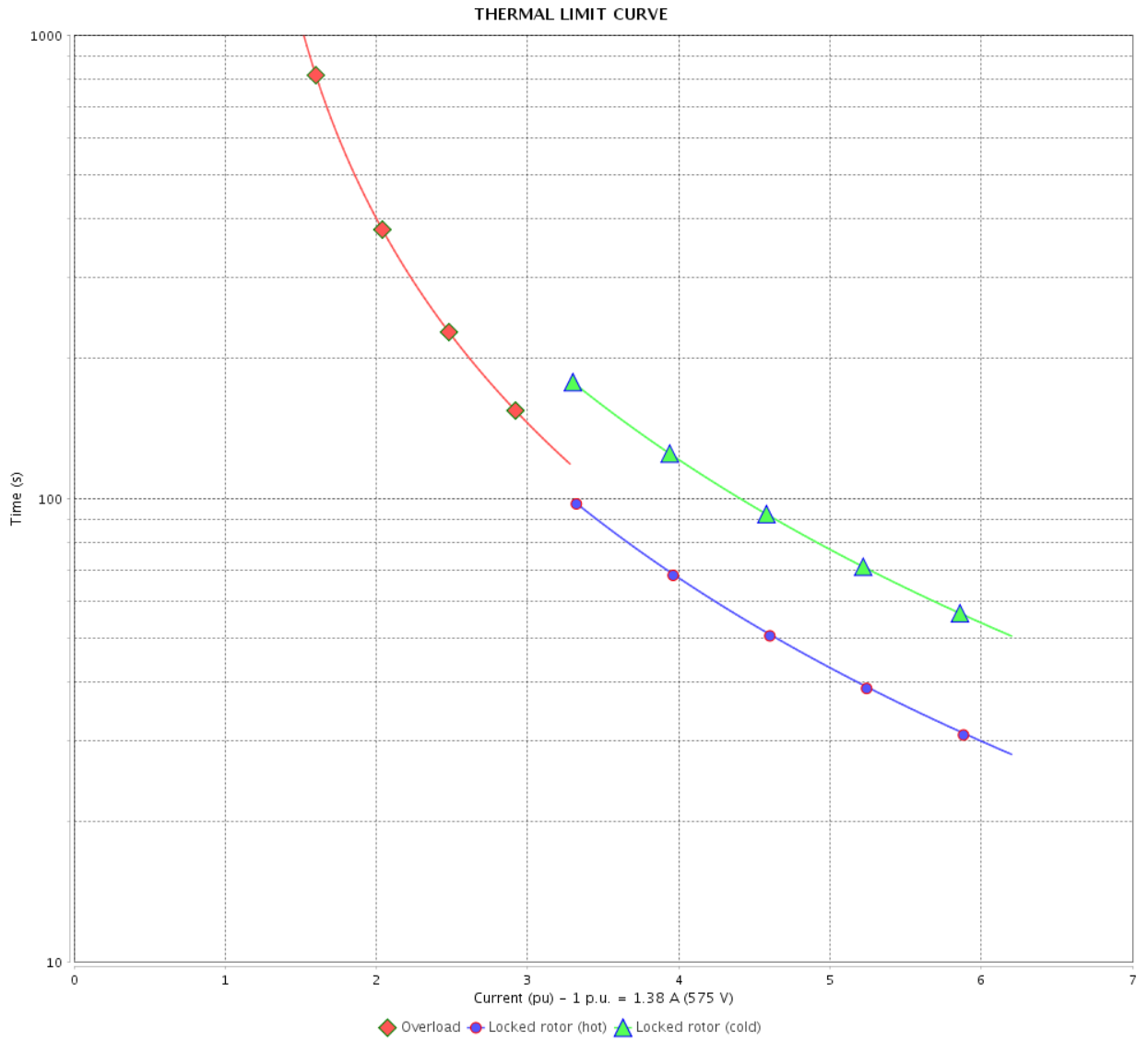
Rev.	Changes Summary	Performed	Checked	Date
Performed by			Page	Revision
Checked by				
Date	11/04/2022			

THERMAL LIMIT CURVE

Three Phase Induction Motor - Squirrel Cage



Customer : _____



Rev.	Changes Summary	Performed	Checked	Date
Performed by		Page 5 / 6		Revision
Checked by				
Date				

VFD OPERATION CURVE

Three Phase Induction Motor - Squirrel Cage



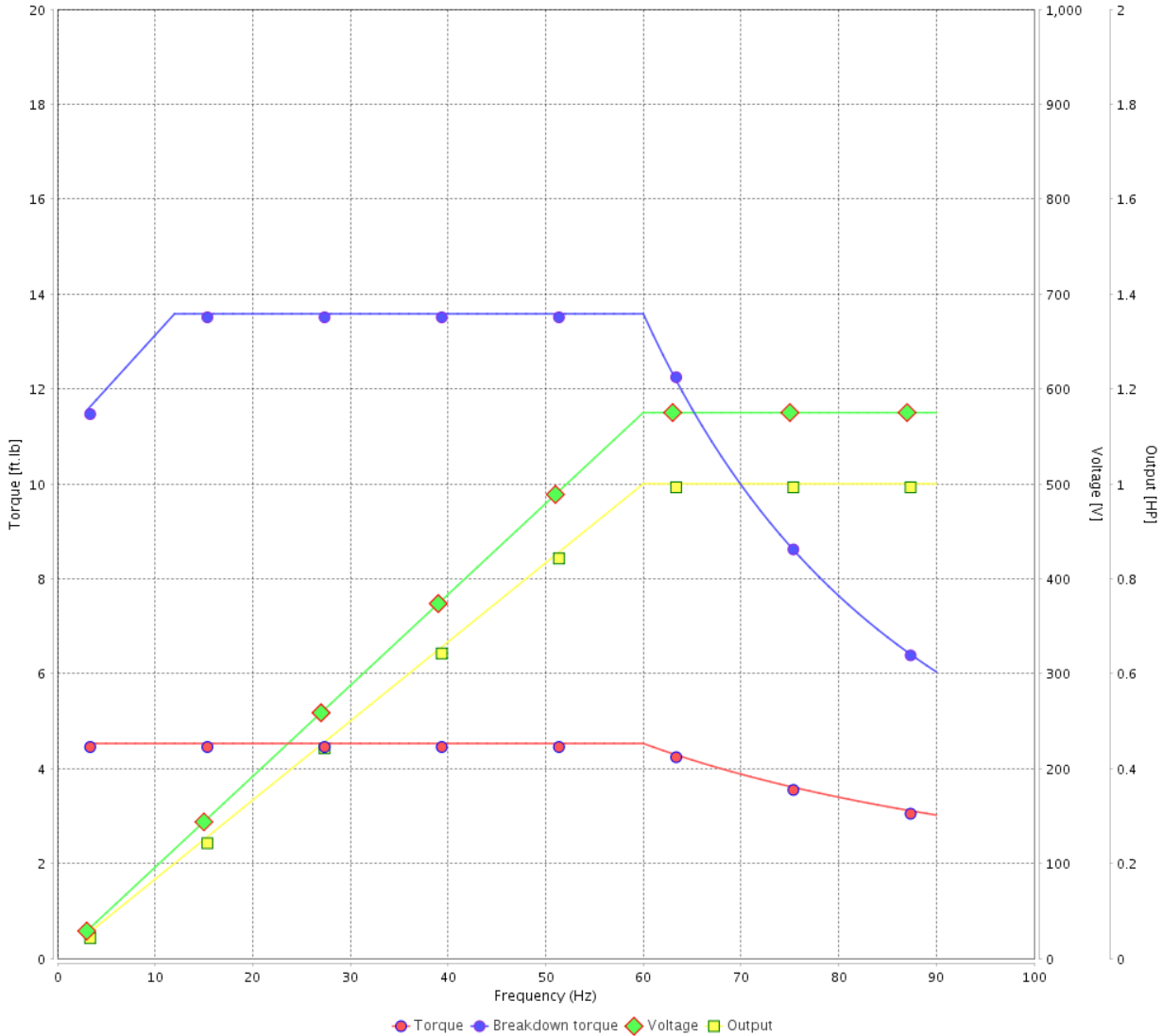
Customer :

Product line : NEMA Premium Efficiency Three-Phase

Product code : 11433736

Catalog # : 00112ST3HIE145T-W22

VFD OPERATION CURVE

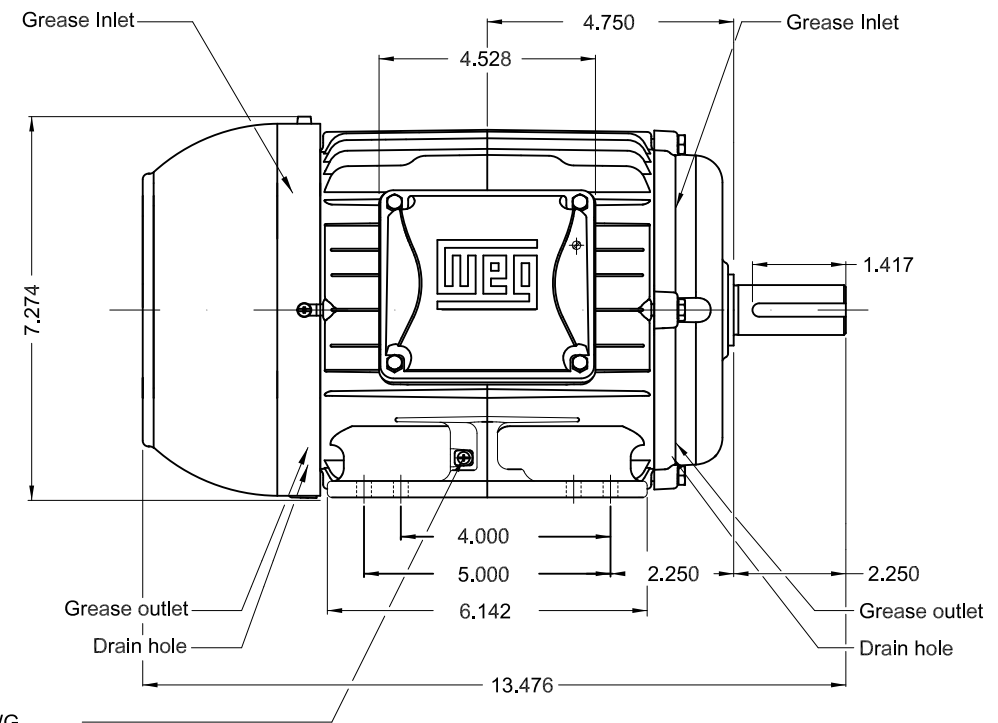
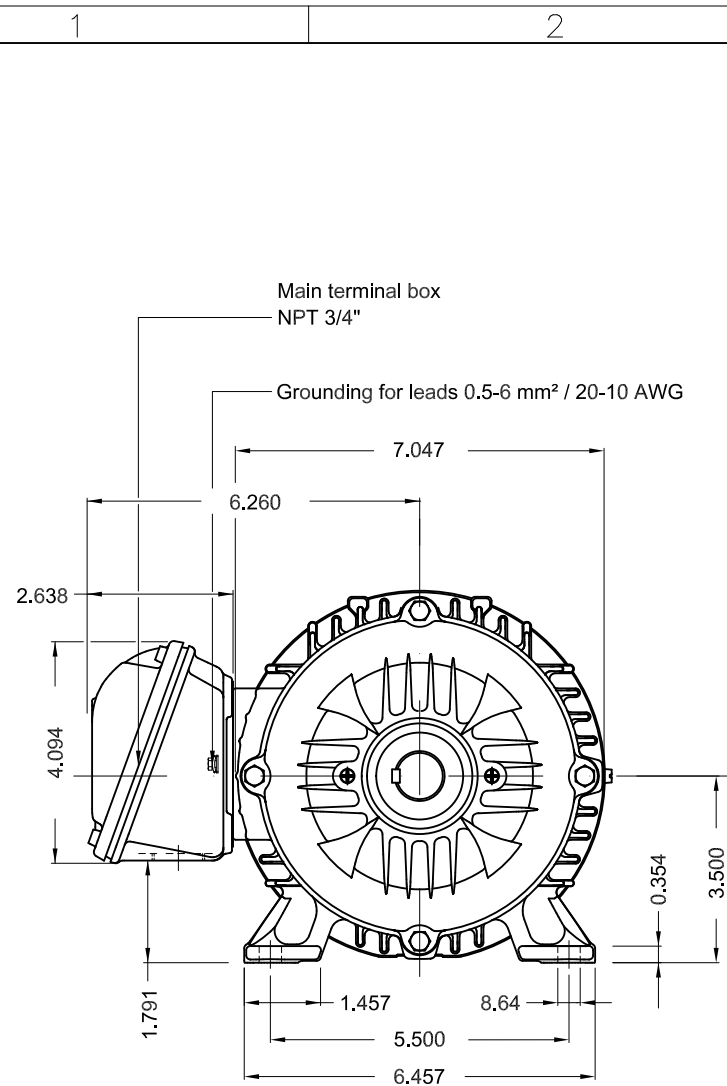


Performance : 575 V 60 Hz 6P

Rated current : 1.38 A
 LRC : 6.2
 Rated torque : 4.53 ft.lb
 Locked rotor torque : 260 %
 Breakdown torque : 300 %
 Rated speed : 1160 rpm

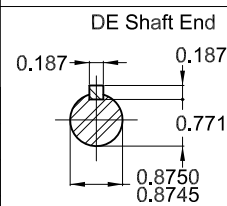
Moment of inertia (J) : 0.1595 sq.ft.lb
 Duty cycle : Cont.(S1)
 Insulation class : F
 Service factor : 1.25
 Temperature rise : 80 K
 Design : B

Rev.	Changes Summary	Performed	Checked	Date
Performed by			Page 6 / 6	Revision
Checked by				
Date	11/04/2022			



Grounding for leads 0.5-6 mm² / 20-10 AWG

Color RAL 5009
 Painting plan 202E
 Mounting NEMA F-1
 Mounting B3R(D)



1 HP 06 Poles 60 Hz

Dimensions in inches

ECM	LOC	SUMMARY OF MODIFICATIONS	EXECUTED	CHECKED	RELEASED	DATE	VER
EXECUTED	PIRWBUSER	THREE PH. MOTOR IEEE 841 W22 PREM. EFF.					
CHECKED		FRAME 143/5T IP55 TEFC					
RELEASED							
REL DT.	WMO	Jaragua do Sul	Product Engineering	SHEET	1 / 1		

PREVIEW
 WDD



MADE IN BRAZIL
11433736



NEMA
Premium

W22

IE000506W22IS

Inverter Duty Motor
Severe Duty

IEEE
841-2009



Class I, Div 2, Gr A, B, C and D - T3
Class I, Zone 2, IIC - T3
Class II, Div 2, Gr F and G - T5
For use on PWM: Gr. A, B, C, D, F and G,
VT 1000:1, CT 20:1, 1.00SF - T4A



FOR SAFE AREA
Mod. TE1BFOXON
CC029A

PH3 60Hz Fr. 143/5T 1000m.a.s.l. IP55 TEFC 66lb

V 575

A 1.38

HP 1.0

kW 0.75

SF 1.25

SFA 1.72

RPM 1160

PF 0.66

AMB 40°C

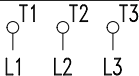
INS cl. F DT80K

NEMA NOM EFF 82.5%

DUTY CONT.

DES B Code K

GUARANT. EFF 80.0%



→ 6205-C3 (4g) 25BC02X30

→ 6204-C3 (4g) 20BC02X30

MOBIL POLYREX EM (20000h)

