



# TORQUE AND CURRENT VS SPEED CURVE

Three Phase Induction Motor - Squirrel Cage

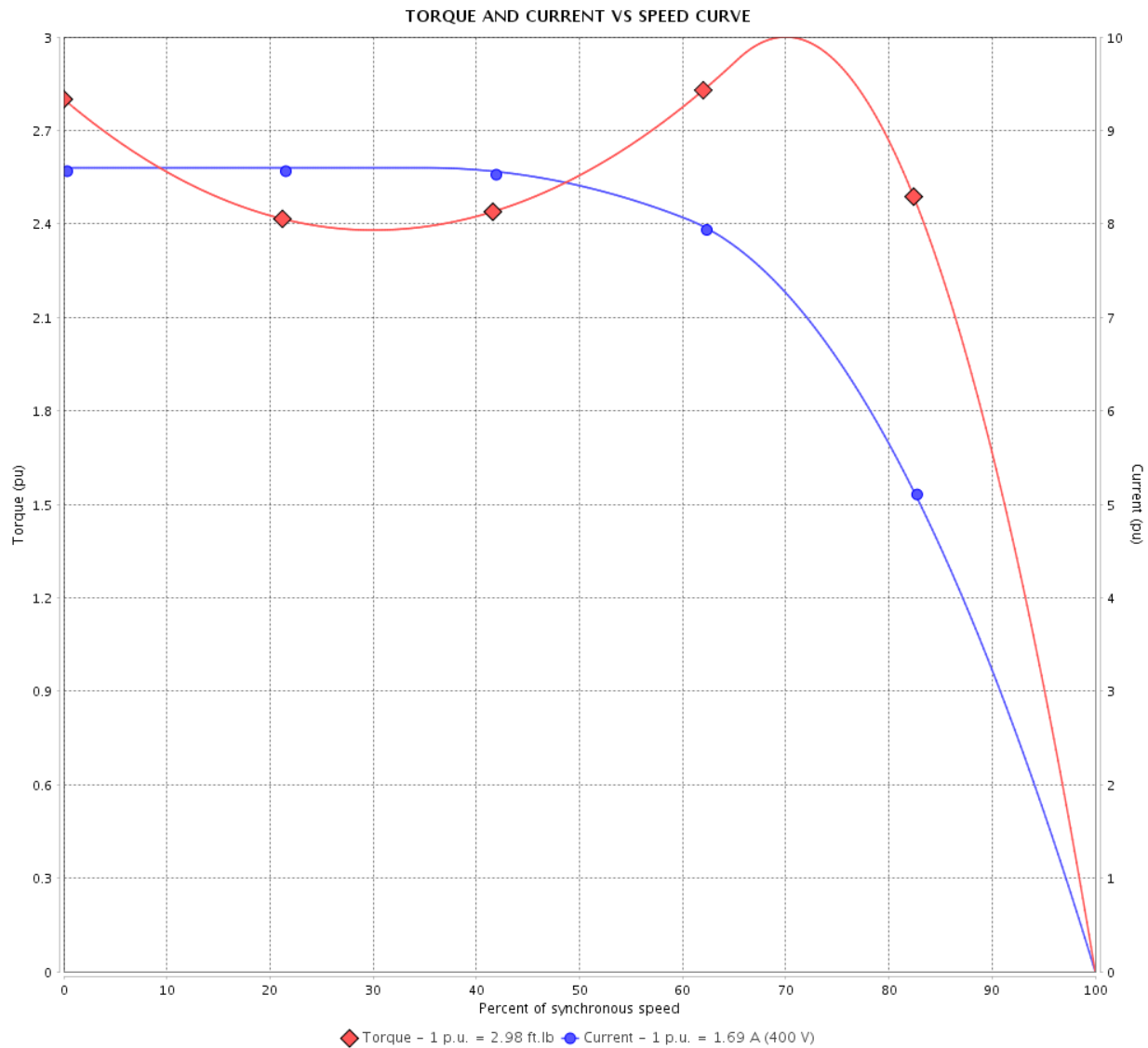


Customer :

Product line : JM Pump NEMA Premium Efficiency Three-Phase

Product code : 14807104

Catalog # : 00118ET3V143JM-S



Performance : 200/400 V 60 Hz 4P

Rated current	: 3.38/1.69 A	Moment of inertia (J)	: 0.1232 sq.ft.lb
LRC	: 8.6	Duty cycle	: Cont.(S1)
Rated torque	: 2.98 ft.lb	Insulation class	: F
Locked rotor torque	: 280 %	Service factor	: 1.15
Breakdown torque	: 300 %	Temperature rise	: 80 K
Rated speed	: 1765 rpm	Design	: B

Locked rotor time : 34s (cold) 19s (hot)

Rev.	Changes Summary	Performed	Checked	Date
Performed by			Page 2 / 6	Revision
Checked by				
Date	14/04/2022			

# LOAD PERFORMANCE CURVE

## Three Phase Induction Motor - Squirrel Cage

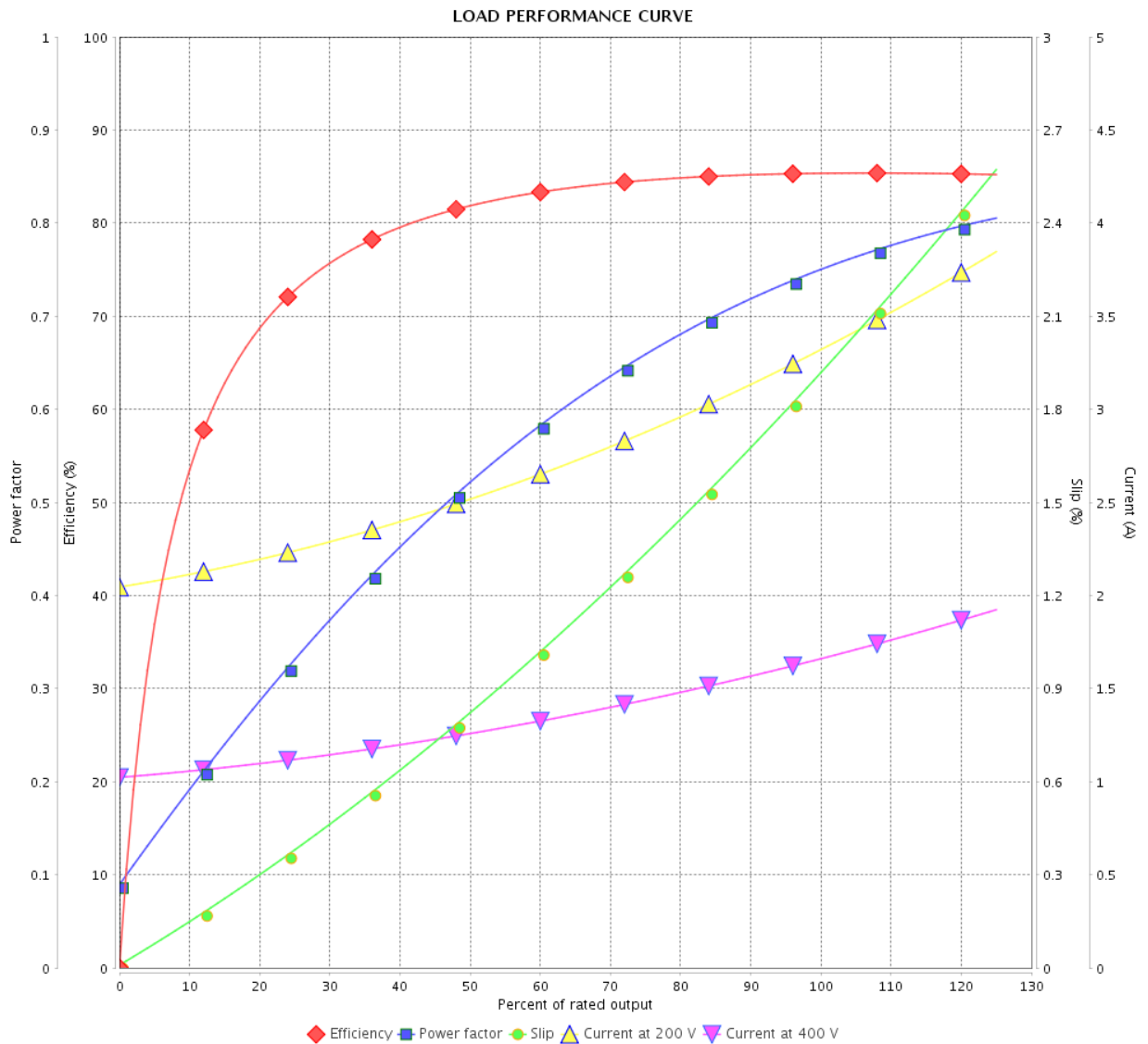


Customer :

Product line : JM Pump NEMA Premium  
Efficiency Three-Phase

Product code : 14807104

Catalog # : 00118ET3V143JM-S



Performance : 200/400 V 60 Hz 4P

Rated current : 3.38/1.69 A  
 LRC : 8.6  
 Rated torque : 2.98 ft.lb  
 Locked rotor torque : 280 %  
 Breakdown torque : 300 %  
 Rated speed : 1765 rpm

Moment of inertia (J) : 0.1232 sq.ft.lb  
 Duty cycle : Cont.(S1)  
 Insulation class : F  
 Service factor : 1.15  
 Temperature rise : 80 K  
 Design : B

Rev.	Changes Summary	Performed	Checked	Date
Performed by			Page	Revision
Checked by			3 / 6	
Date	14/04/2022			

# THERMAL LIMIT CURVE



## Three Phase Induction Motor - Squirrel Cage

Customer :

Product line : JM Pump NEMA Premium  
Efficiency Three-Phase

Product code : 14807104

Catalog # : 00118ET3V143JM-S

Performance : 200/400 V 60 Hz 4P

Rated current : 3.38/1.69 A  
LRC : 8.6  
Rated torque : 2.98 ft.lb  
Locked rotor torque : 280 %  
Breakdown torque : 300 %  
Rated speed : 1765 rpm

Moment of inertia (J) : 0.1232 sq.ft.lb  
Duty cycle : Cont.(S1)  
Insulation class : F  
Service factor : 1.15  
Temperature rise : 80 K  
Design : B

Heating constant

Cooling constant

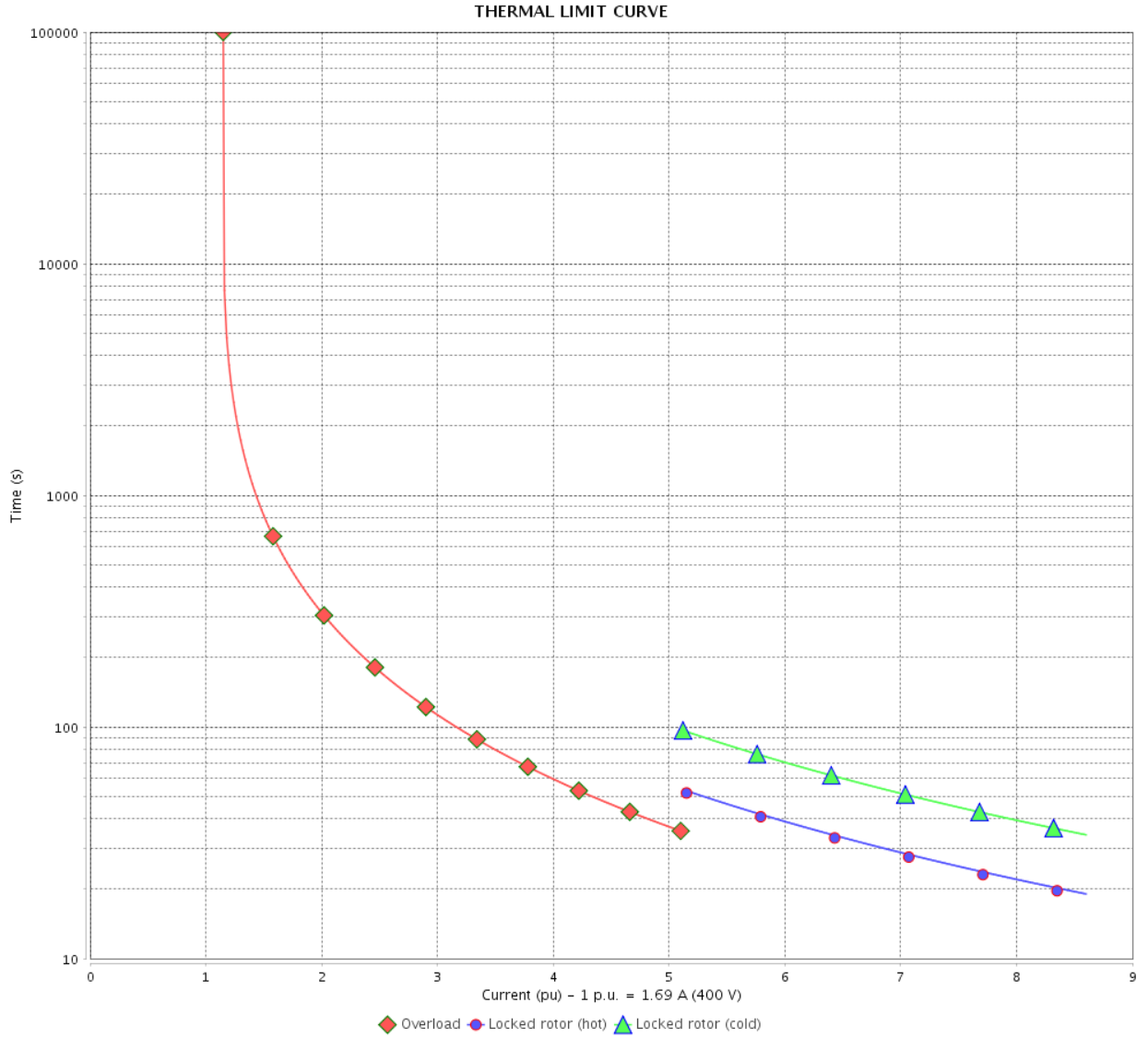
Rev.	Changes Summary	Performed	Checked	Date
Performed by				
Checked by			Page	Revision
Date	14/04/2022		4 / 6	

# THERMAL LIMIT CURVE

Three Phase Induction Motor - Squirrel Cage



Customer : \_\_\_\_\_



Rev.	Changes Summary	Performed	Checked	Date
Performed by		Page 5 / 6		Revision
Checked by				
Date				

# VFD OPERATION CURVE

Three Phase Induction Motor - Squirrel Cage



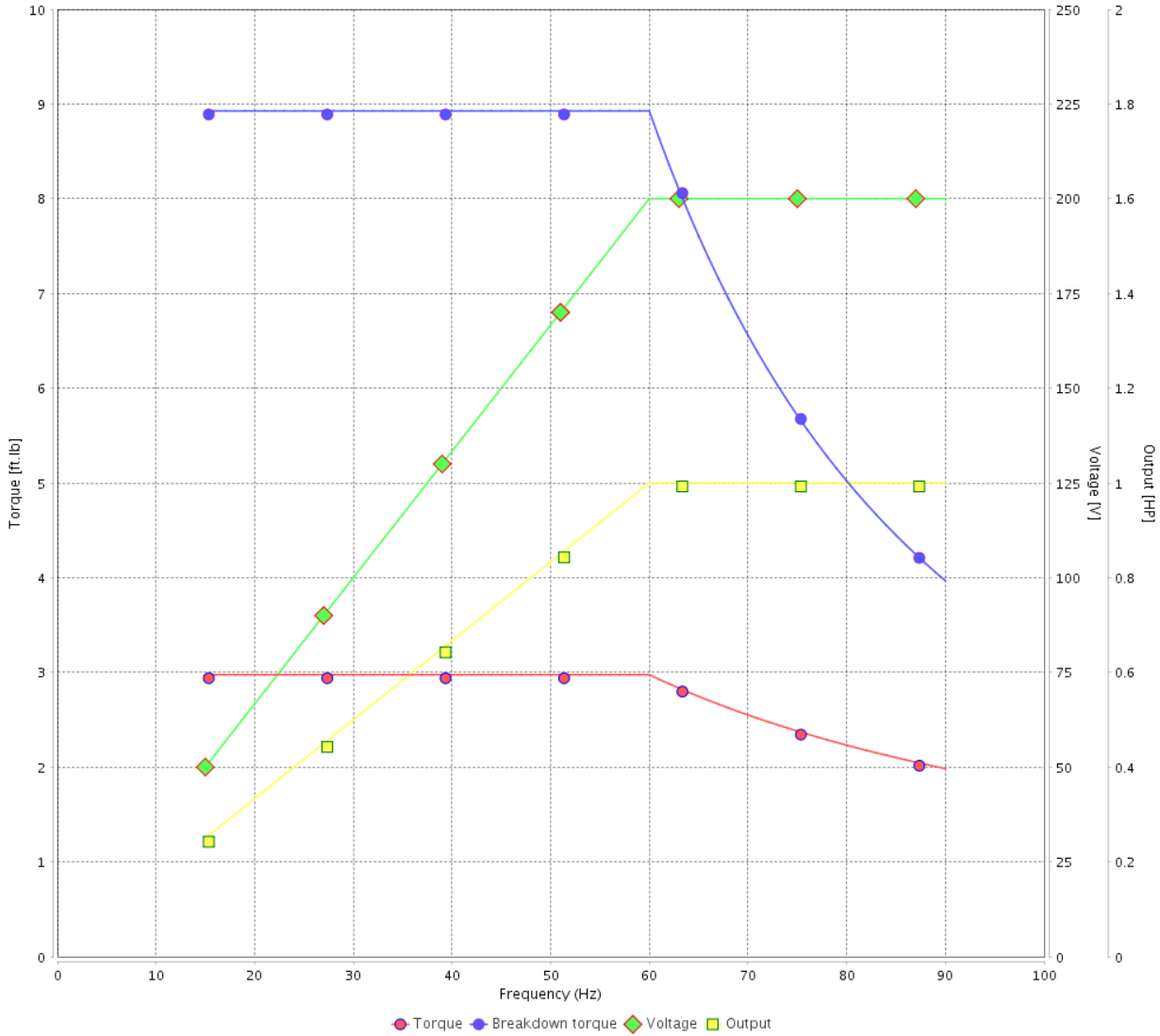
Customer :

Product line : JM Pump NEMA Premium Efficiency Three-Phase

Product code : 14807104

Catalog # : 00118ET3V143JM-S

VFD OPERATION CURVE



Performance : 200/400 V 60 Hz 4P

Rated current : 3.38/1.69 A  
 LRC : 8.6  
 Rated torque : 2.98 ft.lb  
 Locked rotor torque : 280 %  
 Breakdown torque : 300 %  
 Rated speed : 1765 rpm

Moment of inertia (J) : 0.1232 sq.ft.lb  
 Duty cycle : Cont.(S1)  
 Insulation class : F  
 Service factor : 1.15  
 Temperature rise : 80 K  
 Design : B

Rev.	Changes Summary	Performed	Checked	Date
Performed by			Page 6 / 6	Revision
Checked by				
Date	14/04/2022			

1 2 3 4 5 6

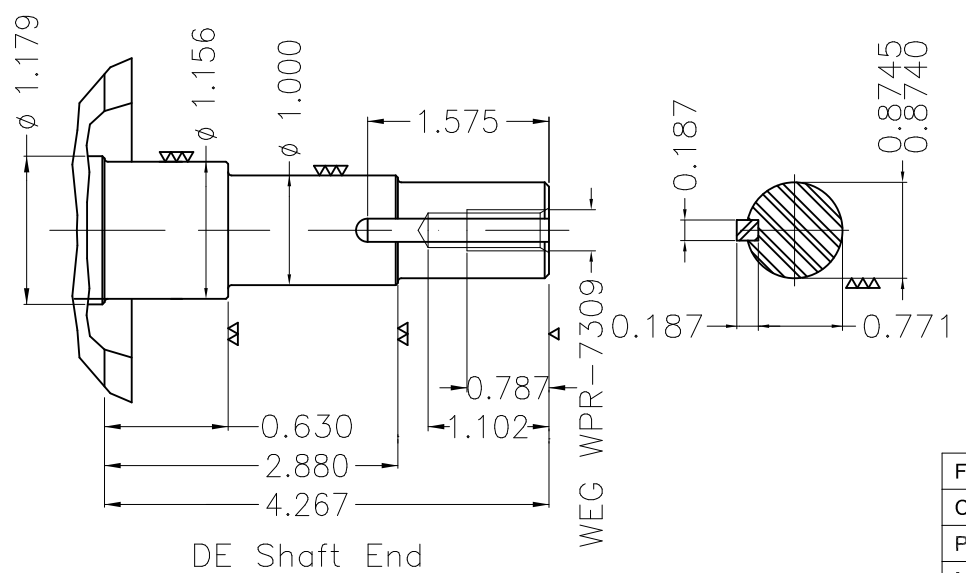
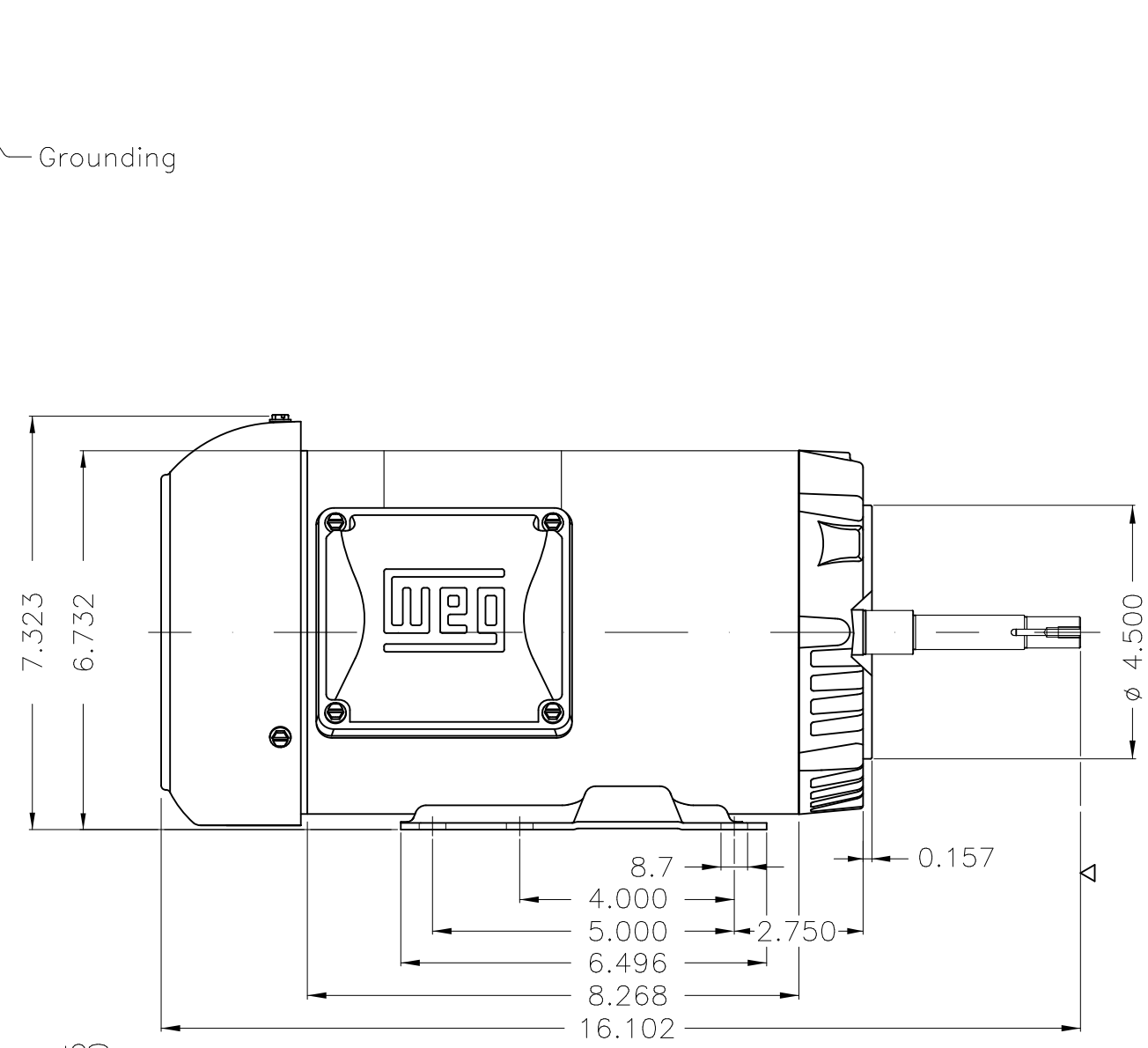
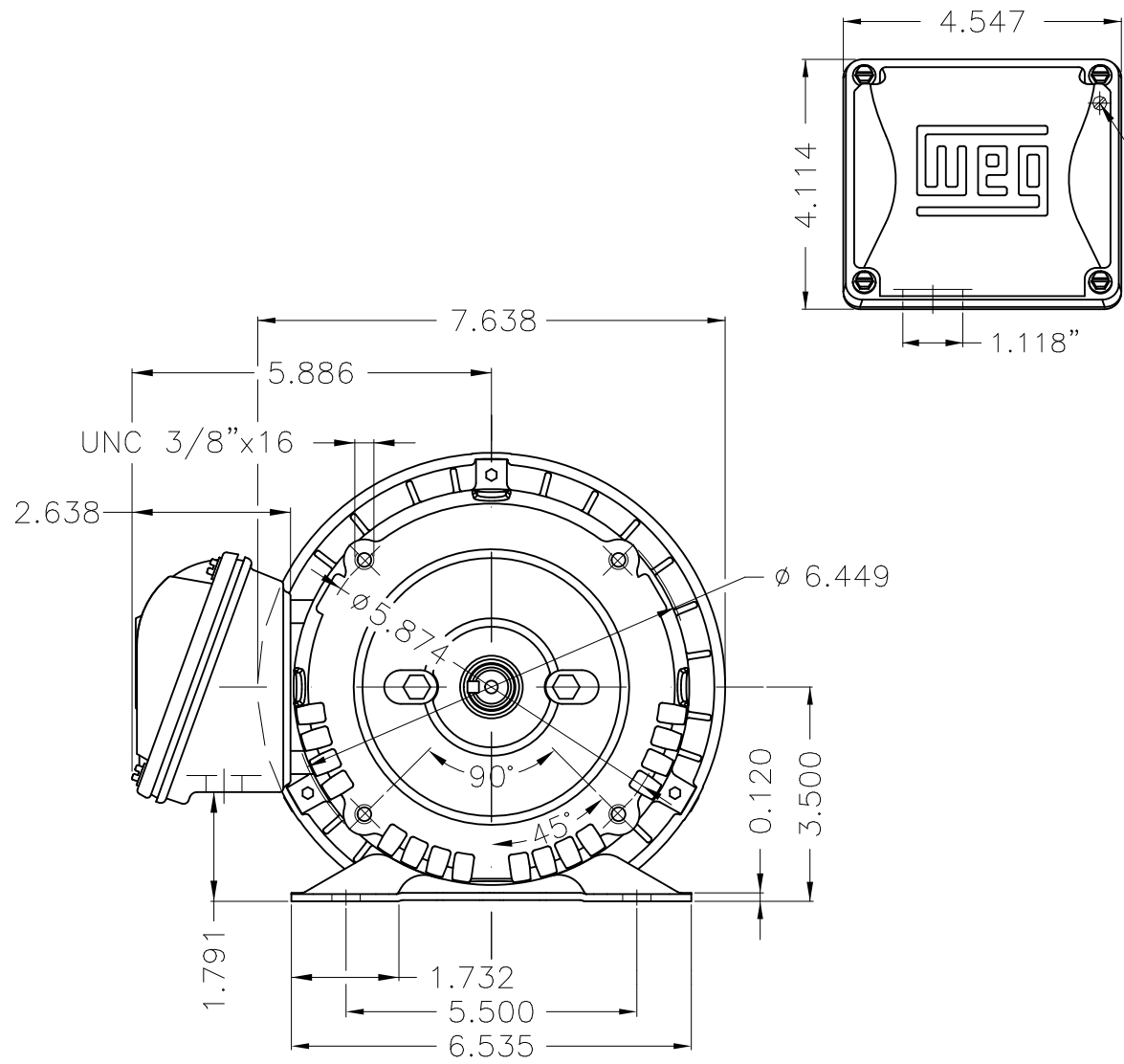
A

B

C

D

E



EUNC 3/8"-16 WEG WPR-7309

DE Shaft End

Fan cover - steel plate						
Color Munsell N 1 matte black						
Painting plan 207N						
Mounting F-1/B34R(D)						

ECM	LOC	SUMMARY OF MODIFICATIONS			EXECUTED	CHECKED	RELEASED	DATE	VER
EXECUTED	PIRBUSER		THREE PH. MOTOR ROLLED STEEL CLOSE COUPLED PUMP JN TYPE PSE 143						
CHECKED			FRAME 143/5JM IP55 TEFC						
RELEASED									
REL DT.		WMO	Jaragua do Sul	Product Engineering	SHEET	1 / 1			

1 HP 04 Poles 60 Hz

WEG's property. Forbidden reproduction without previous authorization.

Dimensions in inches XME A3

**NEMA  
Premium**

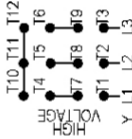
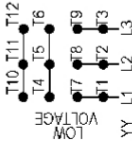
MADE IN MEXICO

**MAT: 14807104 CC029A****W01.TE0IC0X0N****MODEL 00118ET3V143JM-S****30MAR2022 B/N:**For 60Hz: Class I, Zone 2, IIC  
Class I, Div.2, Gr. A,B,C,D - T3DIV 2 Inverter Duty (SF1.00)  
CT 2:1/VT 1000:1

PH 3	Hz 60	HP 1.0
FR 143/5JM		KW 0.75
DUTY CONT.		V 200/400
ALT 1000 m.a.s.l.		A 3.38/1.69
INS CL F AT 80K	IP55	SFA 3.89/1.94
AMB 40°C	DES B	SF 1.15
ENCL TEFC	CODE M	PF 0.75
		RPM 1765
		NEMA NOM. EFF 85.5%

For safe area-inverter duty motor For use on VPWM 1000:1 VT, 4:1 CT

DE 6206-ZZ	ODE 6203-ZZ	MOBIL POLYREX EM
------------	-------------	------------------



T1-BLU T2-WHT  
 T3-ORG T4-YEL  
 T5-BLK T6-GRY  
 T7-PNK T8-RED  
 T9-BRK RED  
 T10-CURRY  
 T11-GRN T12-VLT



INTERCHANGE ANY TWO LINE WIRES TO REVERSE THE ROTATION

**WARNING:** Motor must be grounded in accordance with local and national electrical codes to prevent serious electrical shocks. Disconnect power source before servicing unit.

**AVERTISSEMENT:** Le moteur doit être mis à la terre

conformément aux codes électriques locaux et nationaux afin d'éviter tout choc électrique grave. Déconnectez l'alimentation avant l'entretien de la machine.

