

DATA SHEET

Three Phase Induction Motor - Squirrel Cage



Customer :		
Product line	: Premium Efficiency Three-Phase	
Product code	: 12809660	
Catalog #	: 00118OT3E56-S	
Frame	: 56	
Insulation class	: F	
Duty cycle	: Cont.(S1)	
Ambient temperature	: -20°C to +40°C	
Altitude	: 1000 m.a.s.l.	
Design	: A	
Cooling method	: IC01 - ODP	
Mounting	: F-1	
Rotation ¹	: Both (CW and CCW)	
Starting method	: Direct On Line	
Approx. weight ²	: 26.9 lb	
Moment of inertia (J)	: 0.0842 sq.ft.lb	
Output [HP]	1	
Poles	4	
Frequency [Hz]	60	
Rated voltage [V]	230/460	
Rated current [A]	3.14/1.57	
L. R. Amperes [A]	23.9/11.9	
LRC [A]	7.6x(Code L)	
No load current [A]	2.20/1.10	
Rated speed [RPM]	1760	
Slip [%]	2.22	
Rated torque [ft.lb]	2.98	
Locked rotor torque [%]	280	
Breakdown torque [%]	320	
Service factor	1.15	
Temperature rise	80 K	
Locked rotor time	30s (cold) 17s (hot)	
Noise level ²	52.0 dB(A)	
Efficiency (%)	25%	77.3
	50%	78.5
	75%	82.5
	100%	83.5
Power Factor	25%	0.27
	50%	0.49
	75%	0.63
	100%	0.72
Bearing type	: Drive end 6204 ZZ Non drive end 6202 ZZ	
Sealing	: Without Without Bearing Seal Bearing Seal	
Lubrication interval	: - -	
Lubricant amount	: - -	
Lubricant type	: Mobil Polyrex EM	
Foundation loads	Max. traction : 86 lb	
	Max. compression : 113 lb	
Notes		
USABLE @208V 3.47A SF 1.00 SFA 3.47A		
This revision replaces and cancel the previous one, which must be eliminated.		
(1) Looking the motor from the shaft end.		
(2) Measured at 1m and with tolerance of +3dB(A).		
(3) Approximate weight subject to changes after manufacturing process.		
(4) At 100% of full load.		
These are average values based on tests with sinusoidal power supply, subject to the tolerances stipulated in NEMA MG-1.		
Rev.	Changes Summary	
Performed by	Performed	
Checked by	Checked	
Date	Date	
14/04/2022		
Page	Revision	
1 / 13		

TORQUE AND CURRENT VS SPEED CURVE

Three Phase Induction Motor - Squirrel Cage



Customer :

Product line : Premium Efficiency Three-Phase

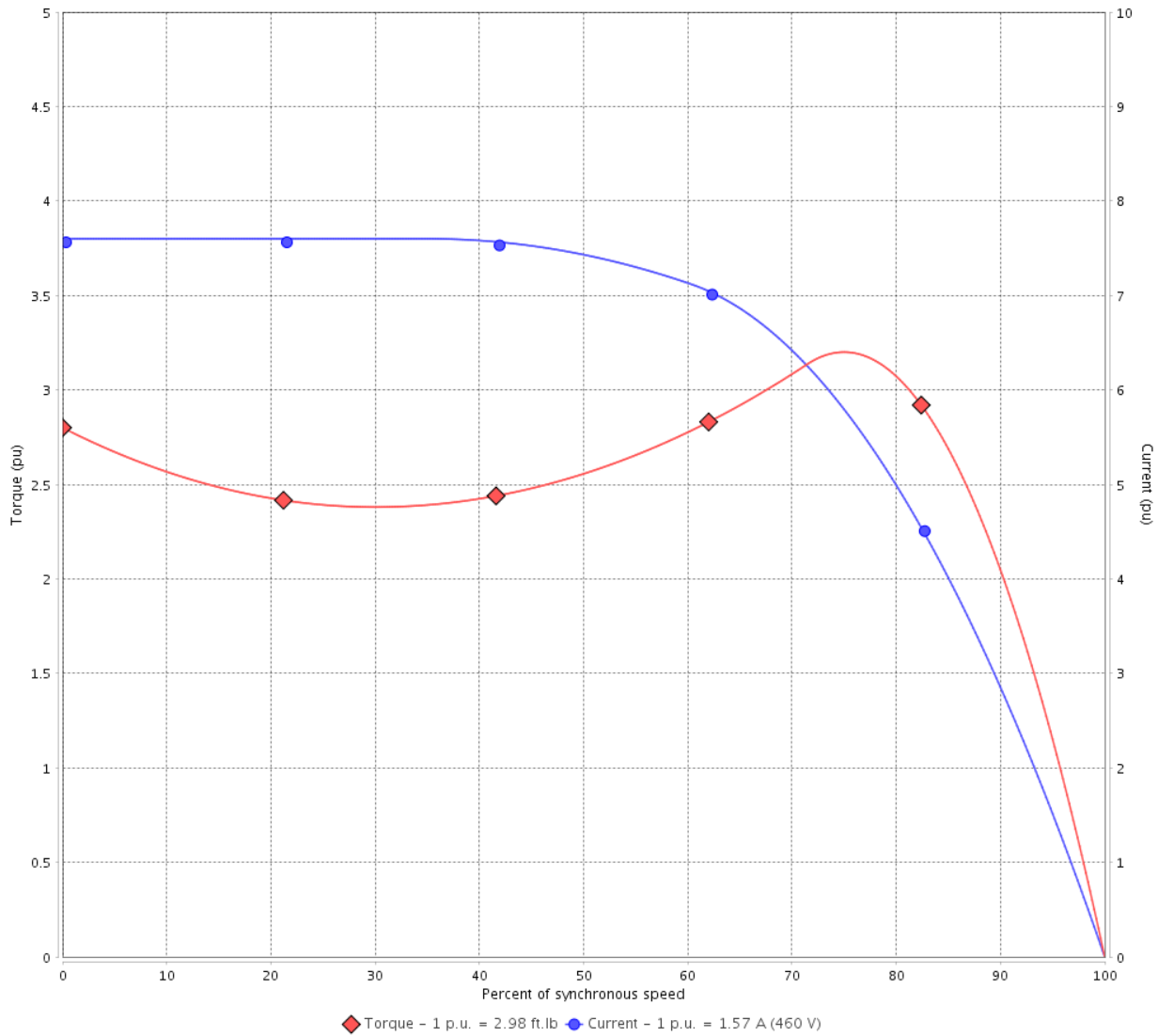
Product code :

12809660

Catalog # :

00118OT3E56-S

TORQUE AND CURRENT VS SPEED CURVE



Performance : 230/460 V 60 Hz 4P

Rated current : 3.14/1.57 A
 LRC : 7.6
 Rated torque : 2.98 ft.lb
 Locked rotor torque : 280 %
 Breakdown torque : 320 %
 Rated speed : 1760 rpm

Moment of inertia (J) : 0.0842 sq.ft.lb
 Duty cycle : Cont.(S1)
 Insulation class : F
 Service factor :
 Temperature rise : 80 K
 Design : A

Locked rotor time : 30s (cold) 17s (hot)

Rev.	Changes Summary	Performed	Checked	Date
Performed by		Page		Revision
Checked by		2 / 13		
Date	14/04/2022			

TORQUE AND CURRENT VS SPEED CURVE



Three Phase Induction Motor - Squirrel Cage

Customer :

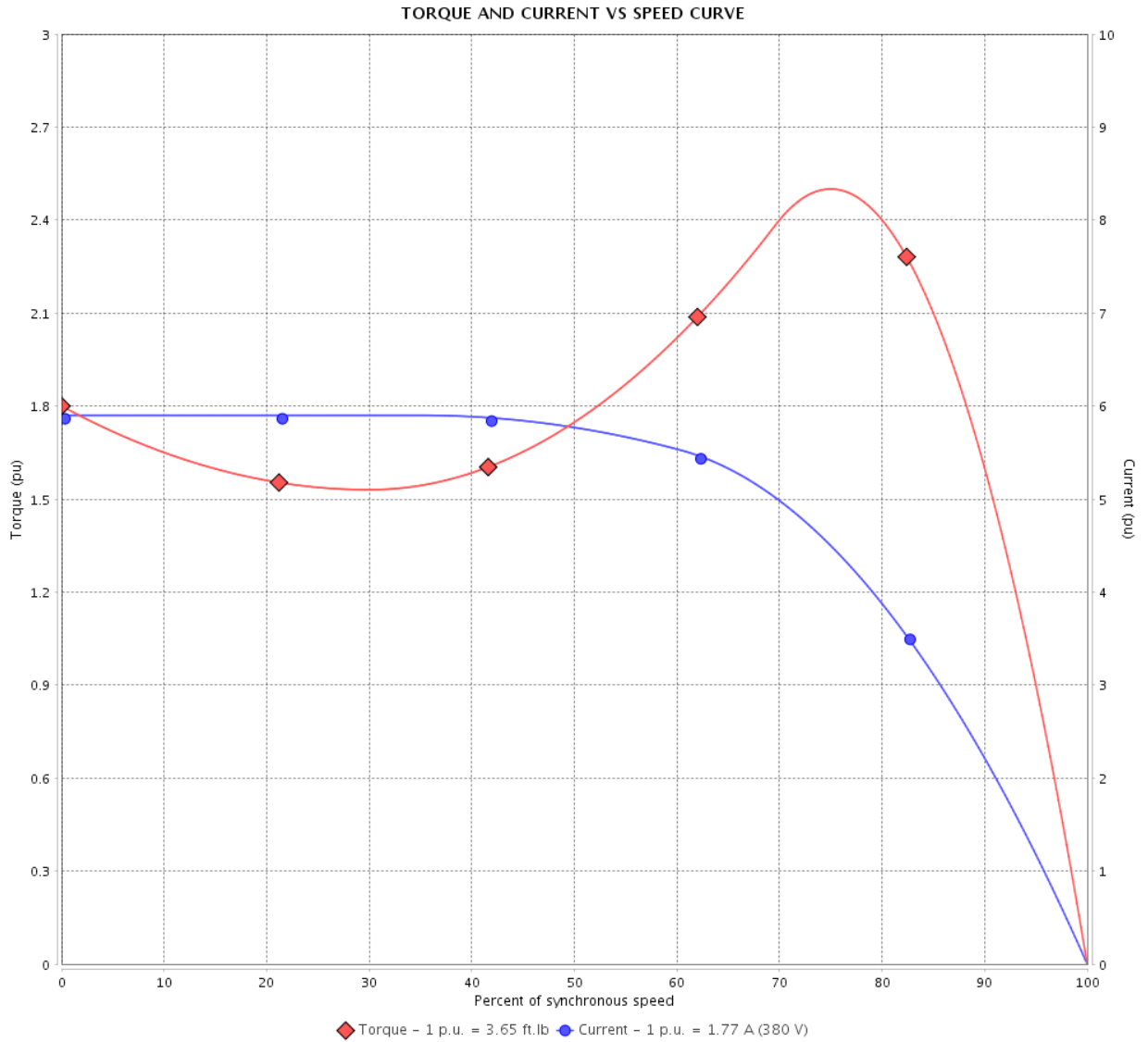
Product line : Premium Efficiency Three-Phase

Product code :

12809660

Catalog # :

00118OT3E56-S



Performance : 190/380 V 50 Hz 4P

Rated current : 3.54/1.77 A
 LRC : 5.9
 Rated torque : 3.65 ft.lb
 Locked rotor torque : 180 %
 Breakdown torque : 250 %
 Rated speed : 1440 rpm

Moment of inertia (J) : 0.0842 sq.ft.lb
 Duty cycle : Cont.(S1)
 Insulation class : F
 Service factor : 1.15
 Temperature rise : 80 K
 Design : A

Locked rotor time : 32s (cold) 18s (hot)

Rev.	Changes Summary	Performed	Checked	Date
Performed by			Page 3 / 13	Revision
Checked by				
Date	14/04/2022			

TORQUE AND CURRENT VS SPEED CURVE

Three Phase Induction Motor - Squirrel Cage



Customer :

Product line : Premium Efficiency Three-Phase

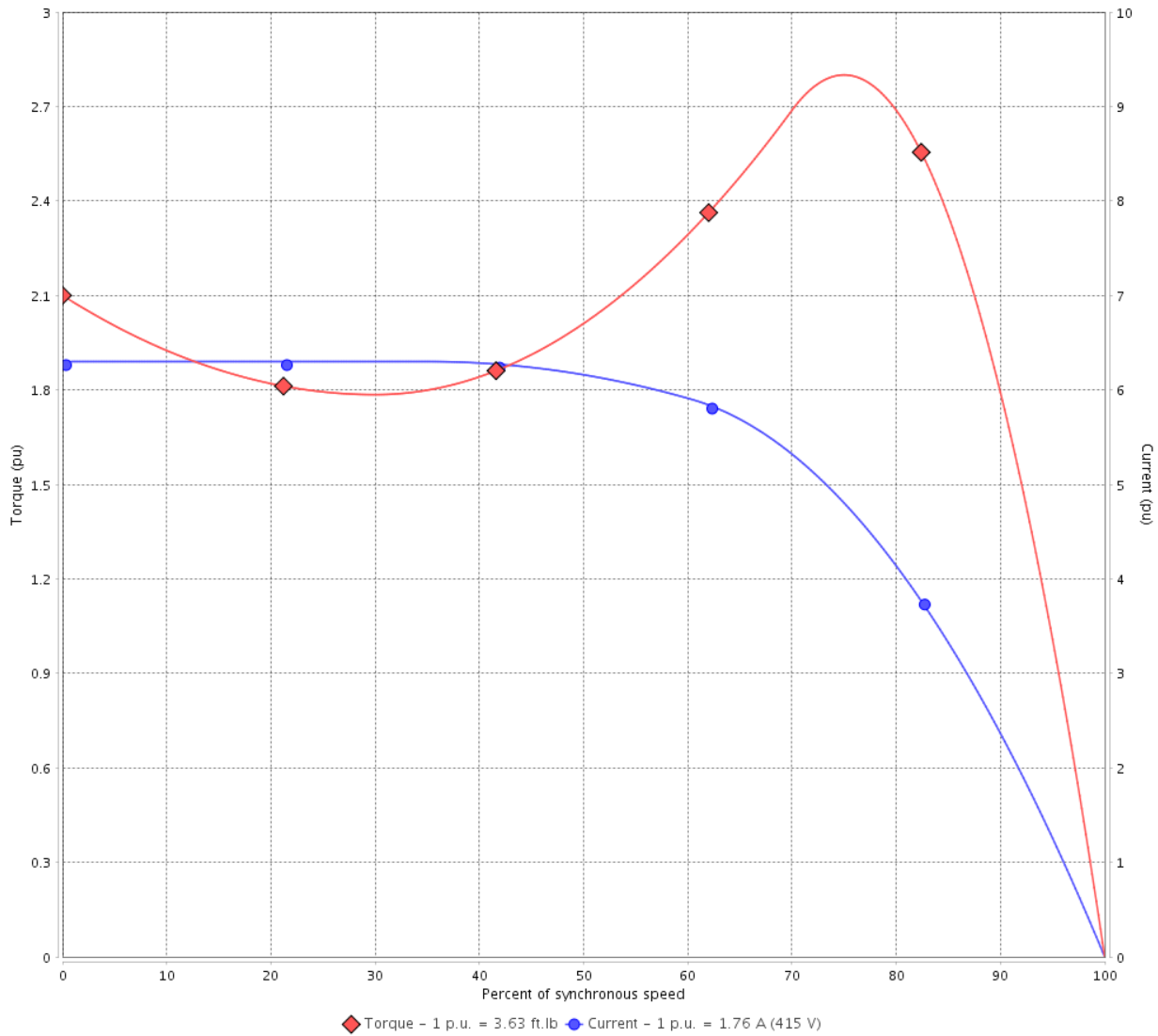
Product code :

12809660

Catalog # :

00118OT3E56-S

TORQUE AND CURRENT VS SPEED CURVE



Performance : 220/415 V 50 Hz 4P

Rated current : 3.32/1.76 A
 LRC : 6.3
 Rated torque : 3.63 ft.lb
 Locked rotor torque : 210 %
 Breakdown torque : 280 %
 Rated speed : 1445 rpm

Moment of inertia (J) : 0.0842 sq.ft.lb
 Duty cycle : Cont.(S1)
 Insulation class : F
 Service factor : 1.15
 Temperature rise : 80 K
 Design : A

Locked rotor time : 30s (cold) 17s (hot)

Rev.	Changes Summary	Performed	Checked	Date
Performed by			Page 4 / 13	Revision
Checked by				
Date	14/04/2022			

LOAD PERFORMANCE CURVE

Three Phase Induction Motor - Squirrel Cage



Customer : _____

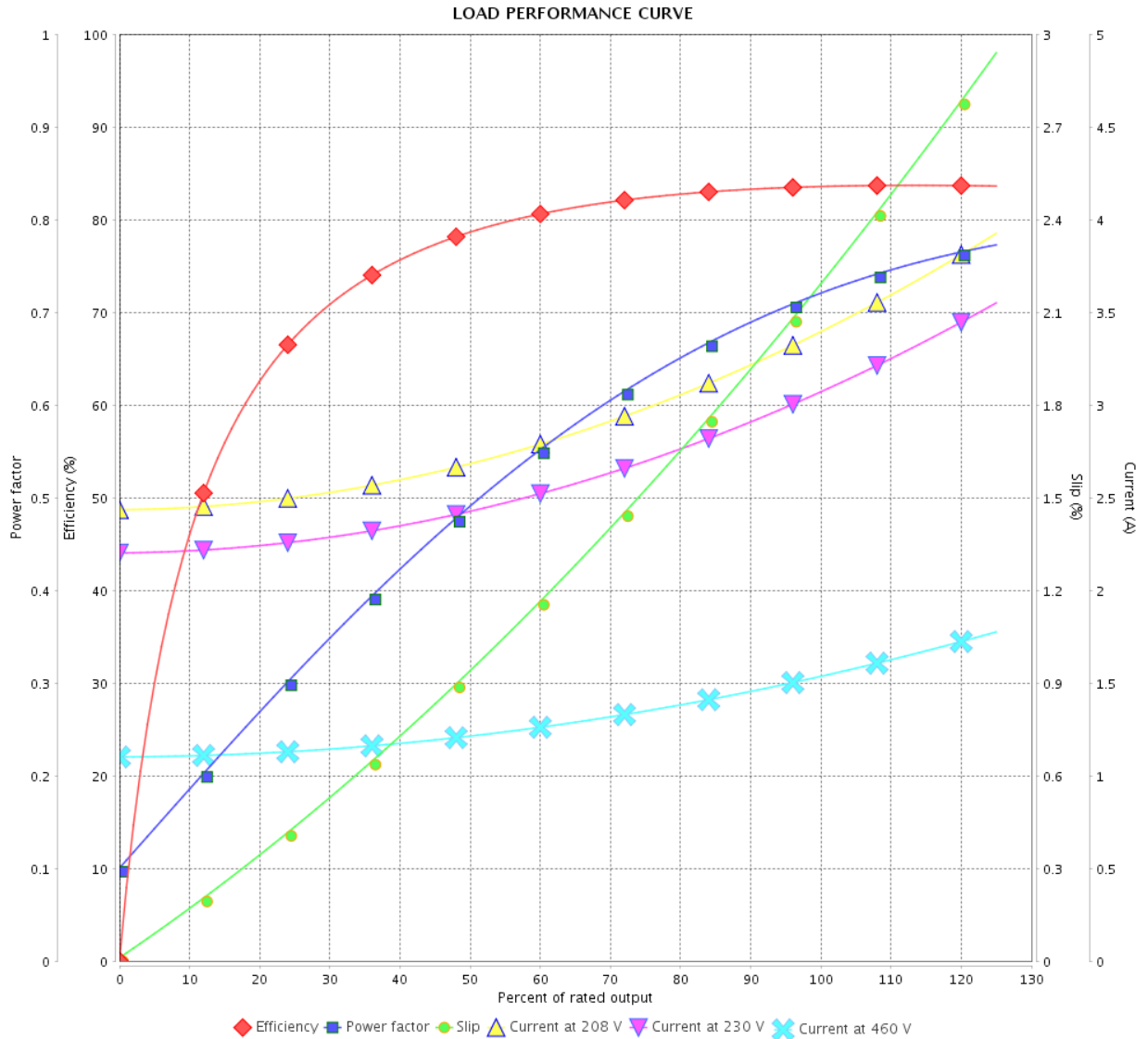
Product line : Premium Efficiency Three-Phase

Product code :

12809660

Catalog # :

00118OT3E56-S



Performance : 230/460 V 60 Hz 4P

Rated current : 3.14/1.57 A
 LRC : 7.6
 Rated torque : 2.98 ft.lb
 Locked rotor torque : 280 %
 Breakdown torque : 320 %
 Rated speed : 1760 rpm

Moment of inertia (J) : 0.0842 sq.ft.lb
 Duty cycle : Cont.(S1)
 Insulation class : F
 Service factor :
 Temperature rise : 80 K
 Design : A

Rev.	Changes Summary	Performed	Checked	Date
Performed by			Page	Revision
Checked by				
Date				

LOAD PERFORMANCE CURVE

Three Phase Induction Motor - Squirrel Cage



Customer : _____

Product line : Premium Efficiency Three-Phase

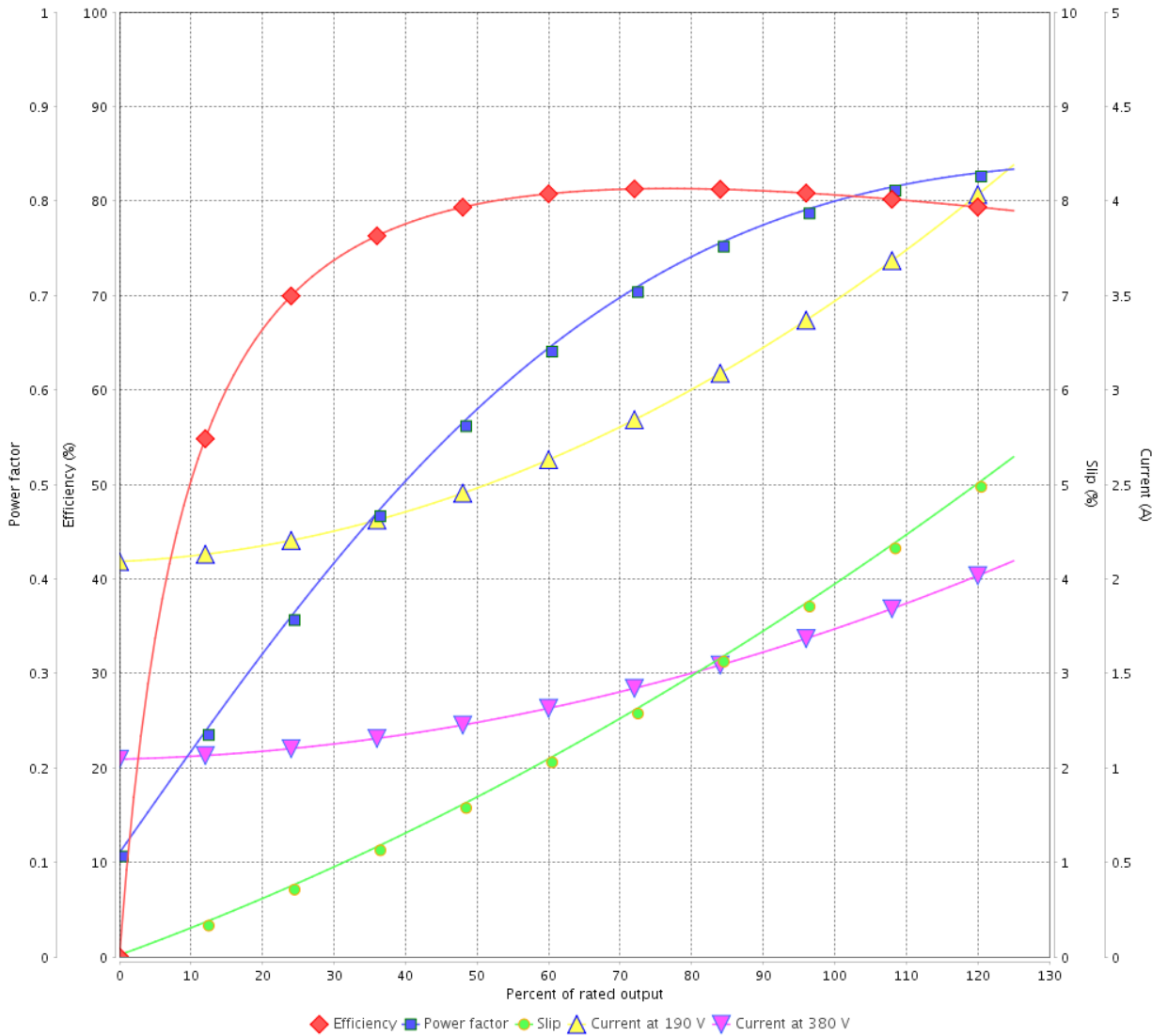
Product code :

12809660

Catalog # :

00118OT3E56-S

LOAD PERFORMANCE CURVE



Performance : 190/380 V 50 Hz 4P

Rated current : 3.54/1.77 A
 LRC : 5.9
 Rated torque : 3.65 ft.lb
 Locked rotor torque : 180 %
 Breakdown torque : 250 %
 Rated speed : 1440 rpm

Moment of inertia (J) : 0.0842 sq.ft.lb
 Duty cycle : Cont.(S1)
 Insulation class : F
 Service factor : 1.15
 Temperature rise : 80 K
 Design : A

Rev.	Changes Summary	Performed	Checked	Date
Performed by			Page	Revision
Checked by				
Date				

LOAD PERFORMANCE CURVE

Three Phase Induction Motor - Squirrel Cage



Customer : _____

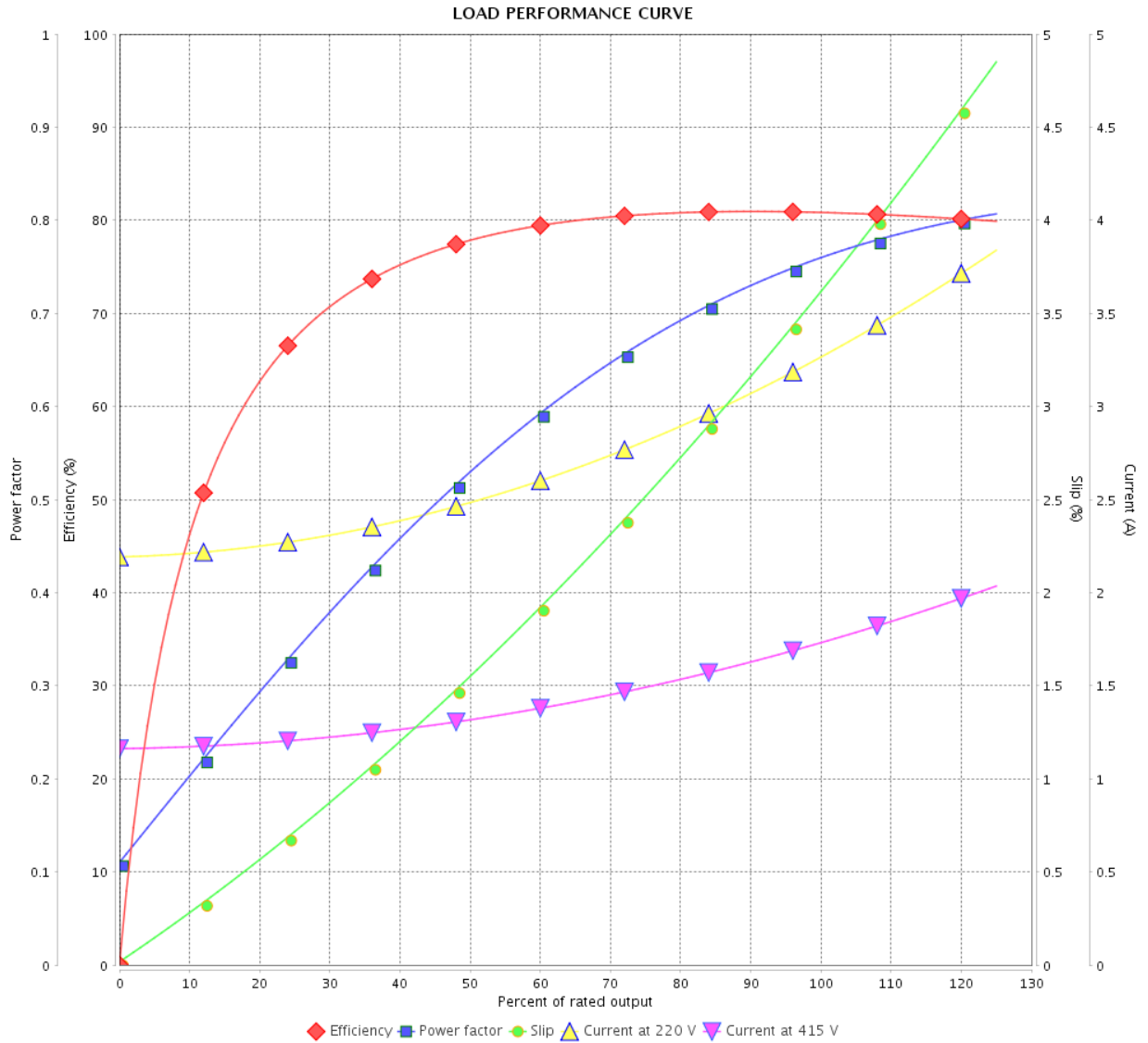
Product line : Premium Efficiency Three-Phase

Product code :

12809660

Catalog # :

00118OT3E56-S



Performance : 220/415 V 50 Hz 4P

Rated current : 3.32/1.76 A
 LRC : 6.3
 Rated torque : 3.63 ft.lb
 Locked rotor torque : 210 %
 Breakdown torque : 280 %
 Rated speed : 1445 rpm

Moment of inertia (J) : 0.0842 sq.ft.lb
 Duty cycle : Cont.(S1)
 Insulation class : F
 Service factor : 1.15
 Temperature rise : 80 K
 Design : A

Rev.	Changes Summary	Performed	Checked	Date
Performed by			Page	Revision
Checked by				
Date				

THERMAL LIMIT CURVE

Three Phase Induction Motor - Squirrel Cage



Customer : _____

Product line : Premium Efficiency Three-Phase

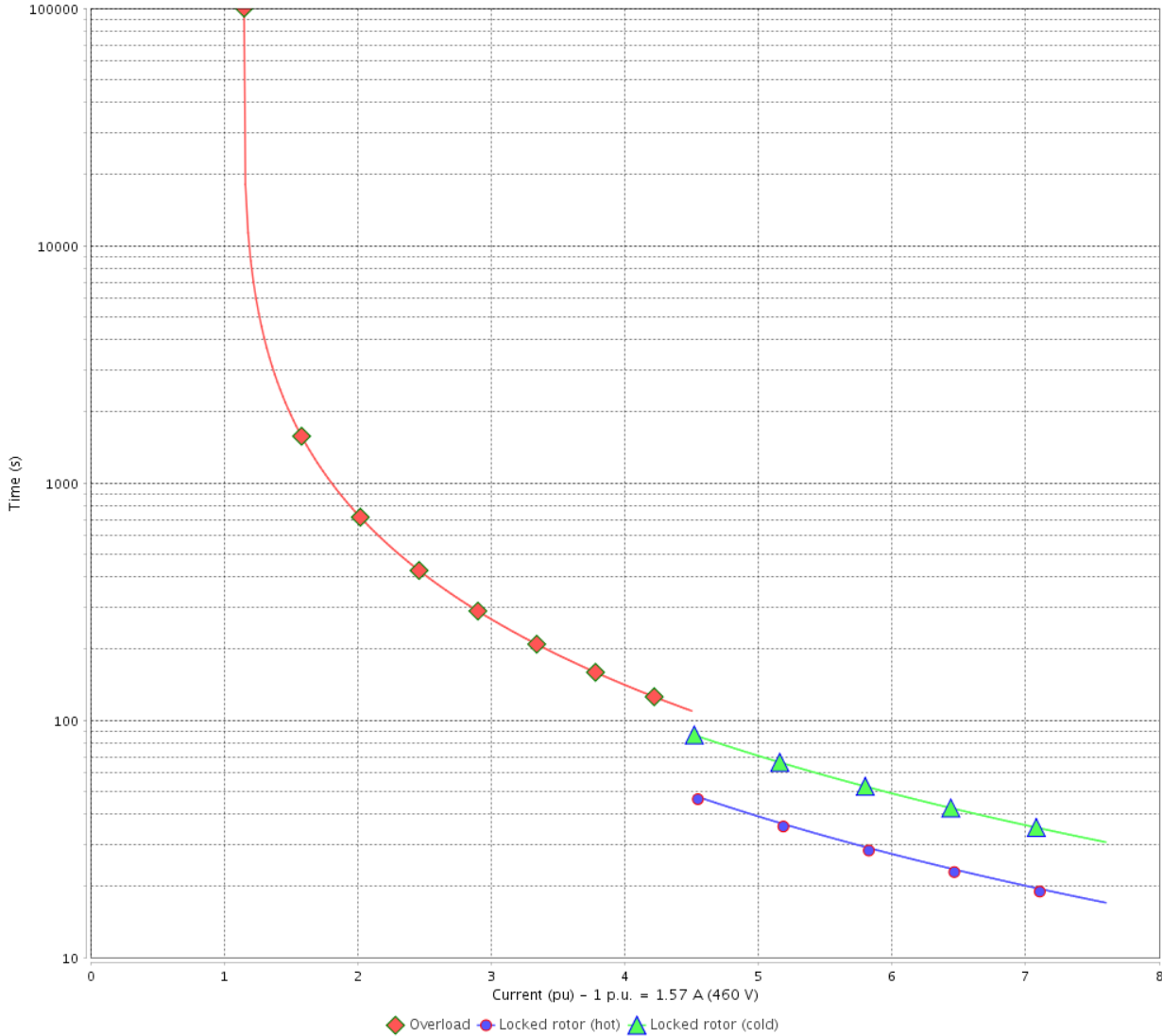
Product code :

12809660

Catalog # :

00118OT3E56-S

THERMAL LIMIT CURVE



Performance : 230/460 V 60 Hz 4P

Rated current : 3.14/1.57 A
 LRC : 7.6
 Rated torque : 2.98 ft.lb
 Locked rotor torque : 280 %
 Breakdown torque : 320 %
 Rated speed : 1760 rpm

Moment of inertia (J) : 0.0842 sq.ft.lb
 Duty cycle : Cont.(S1)
 Insulation class : F
 Service factor :
 Temperature rise : 80 K
 Design : A

Heating constant

Cooling constant

Rev.	Changes Summary	Performed	Checked	Date
Performed by			Page 8 / 13	Revision
Checked by				
Date	14/04/2022			

THERMAL LIMIT CURVE

Three Phase Induction Motor - Squirrel Cage



Customer : _____

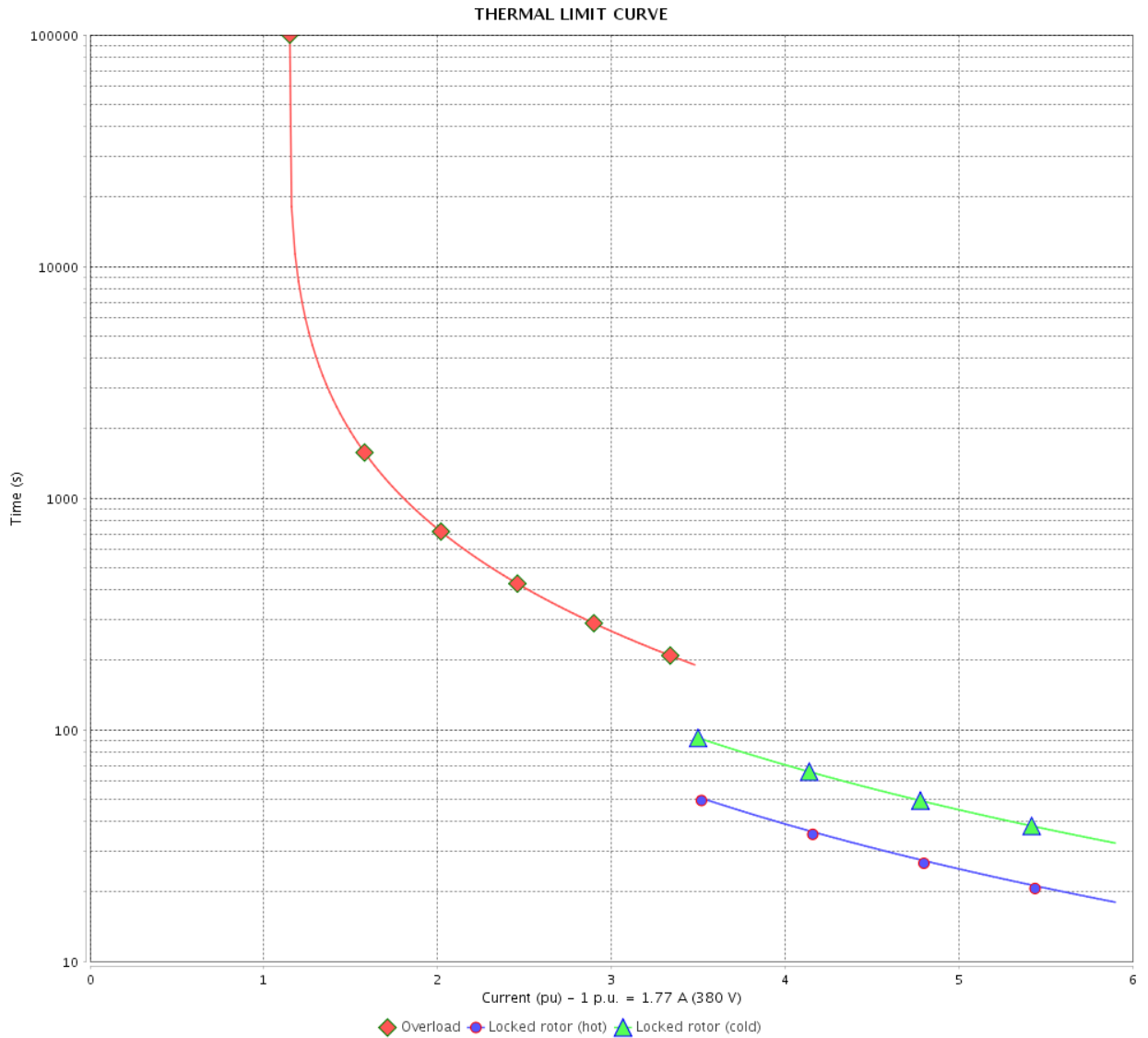
Product line : Premium Efficiency Three-Phase

Product code :

12809660

Catalog # :

00118OT3E56-S



Performance : 190/380 V 50 Hz 4P

Rated current : 3.54/1.77 A
 LRC : 5.9
 Rated torque : 3.65 ft.lb
 Locked rotor torque : 180 %
 Breakdown torque : 250 %
 Rated speed : 1440 rpm

Moment of inertia (J) : 0.0842 sq.ft.lb
 Duty cycle : Cont.(S1)
 Insulation class : F
 Service factor : 1.15
 Temperature rise : 80 K
 Design : A

Heating constant

Cooling constant

Rev.	Changes Summary	Performed	Checked	Date
Performed by				
Checked by				
Date				
		Page	Revision	
		9 / 13		

THERMAL LIMIT CURVE

Three Phase Induction Motor - Squirrel Cage



Customer : _____

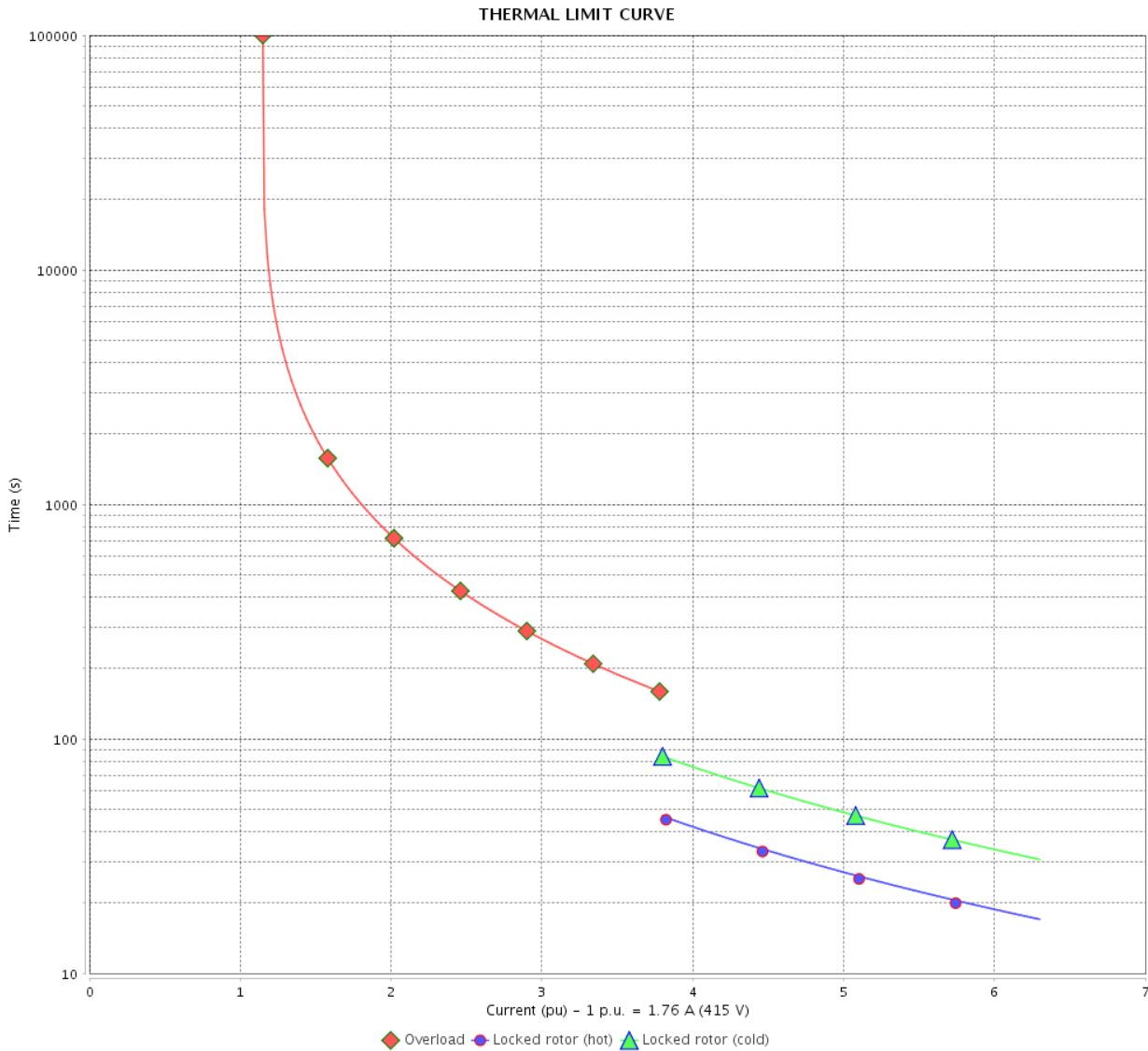
Product line : Premium Efficiency Three-Phase

Product code :

12809660

Catalog # :

00118OT3E56-S



Performance : 220/415 V 50 Hz 4P

Rated current : 3.32/1.76 A
 LRC : 6.3
 Rated torque : 3.63 ft.lb
 Locked rotor torque : 210 %
 Breakdown torque : 280 %
 Rated speed : 1445 rpm

Moment of inertia (J) : 0.0842 sq.ft.lb
 Duty cycle : Cont.(S1)
 Insulation class : F
 Service factor : 1.15
 Temperature rise : 80 K
 Design : A

Heating constant

Cooling constant

Rev.	Changes Summary	Performed	Checked	Date
Performed by		Page		Revision
Checked by		10 / 13		
Date		14/04/2022		

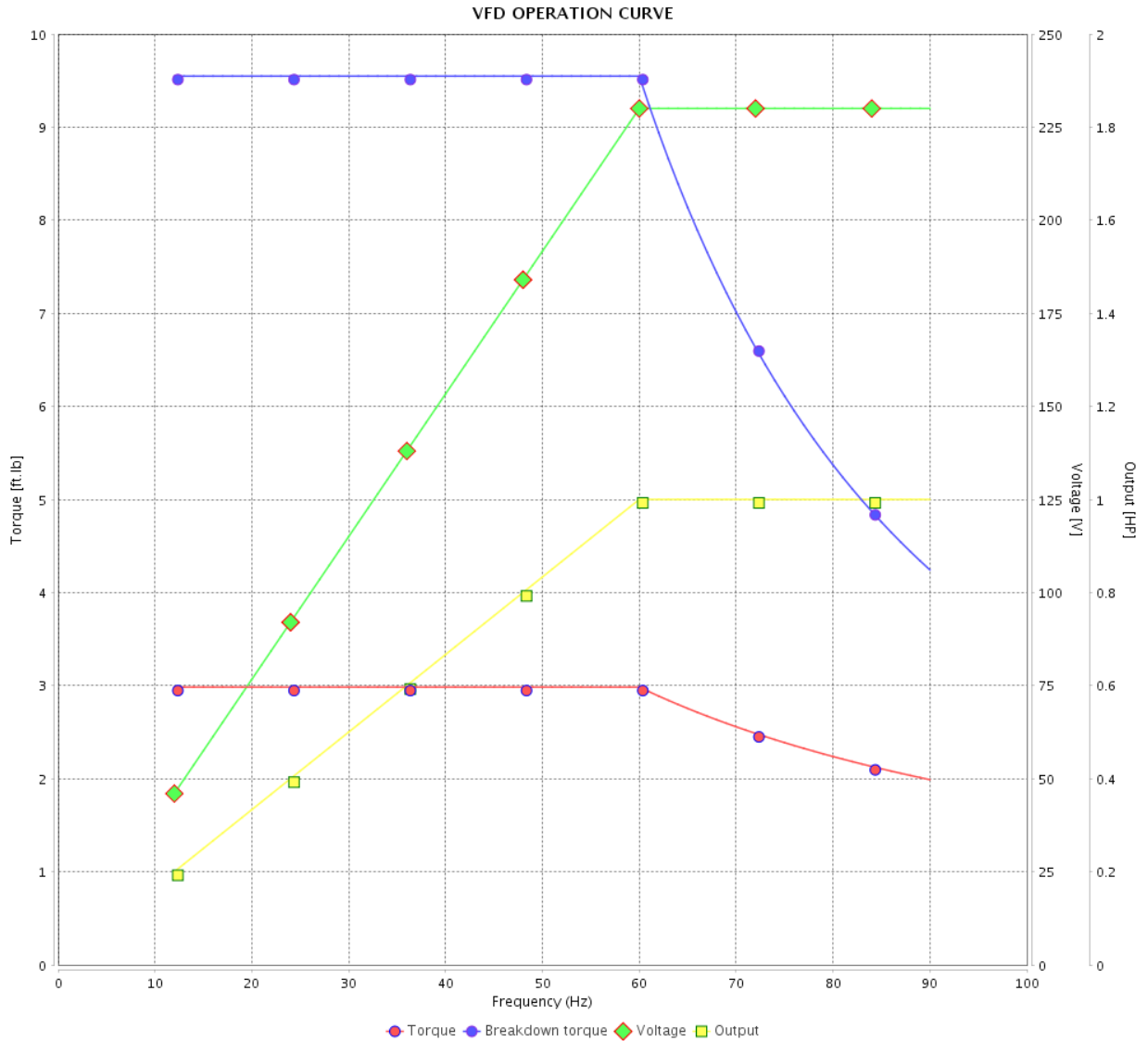
VFD OPERATION CURVE

Three Phase Induction Motor - Squirrel Cage



Customer : _____

Product line : Premium Efficiency Three-Phase Product code : 12809660
 Catalog # : _____ Catalog # : 00118OT3E56-S



Performance : 230/460 V 60 Hz 4P

Rated current : 3.14/1.57 A
 LRC : 7.6
 Rated torque : 2.98 ft.lb
 Locked rotor torque : 280 %
 Breakdown torque : 320 %
 Rated speed : 1760 rpm

Moment of inertia (J) : 0.0842 sq.ft.lb
 Duty cycle : Cont.(S1)
 Insulation class : F
 Service factor :
 Temperature rise : 80 K
 Design : A

Rev.	Changes Summary	Performed	Checked	Date
Performed by			Page	Revision
Checked by				
Date				

VFD OPERATION CURVE

Three Phase Induction Motor - Squirrel Cage



Customer :

Product line : Premium Efficiency Three-Phase

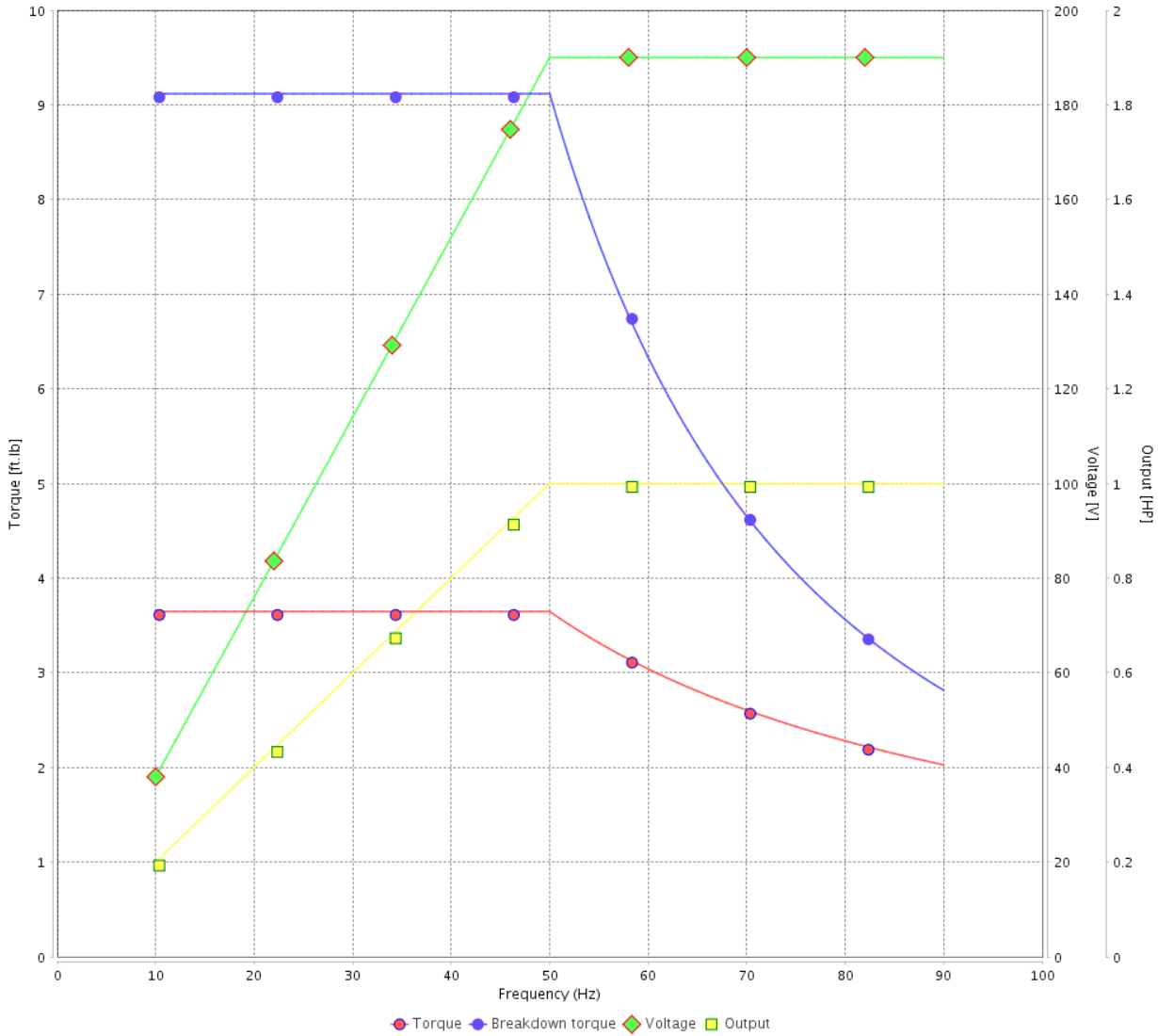
Product code :

12809660

Catalog # :

00118OT3E56-S

VFD OPERATION CURVE



Performance : 190/380 V 50 Hz 4P

Rated current : 3.54/1.77 A
 LRC : 5.9
 Rated torque : 3.65 ft.lb
 Locked rotor torque : 180 %
 Breakdown torque : 250 %
 Rated speed : 1440 rpm

Moment of inertia (J) : 0.0842 sq.ft.lb
 Duty cycle : Cont.(S1)
 Insulation class : F
 Service factor : 1.15
 Temperature rise : 80 K
 Design : A

Rev.	Changes Summary	Performed	Checked	Date
Performed by			Page	Revision
Checked by				
Date				

VFD OPERATION CURVE

Three Phase Induction Motor - Squirrel Cage



Customer :

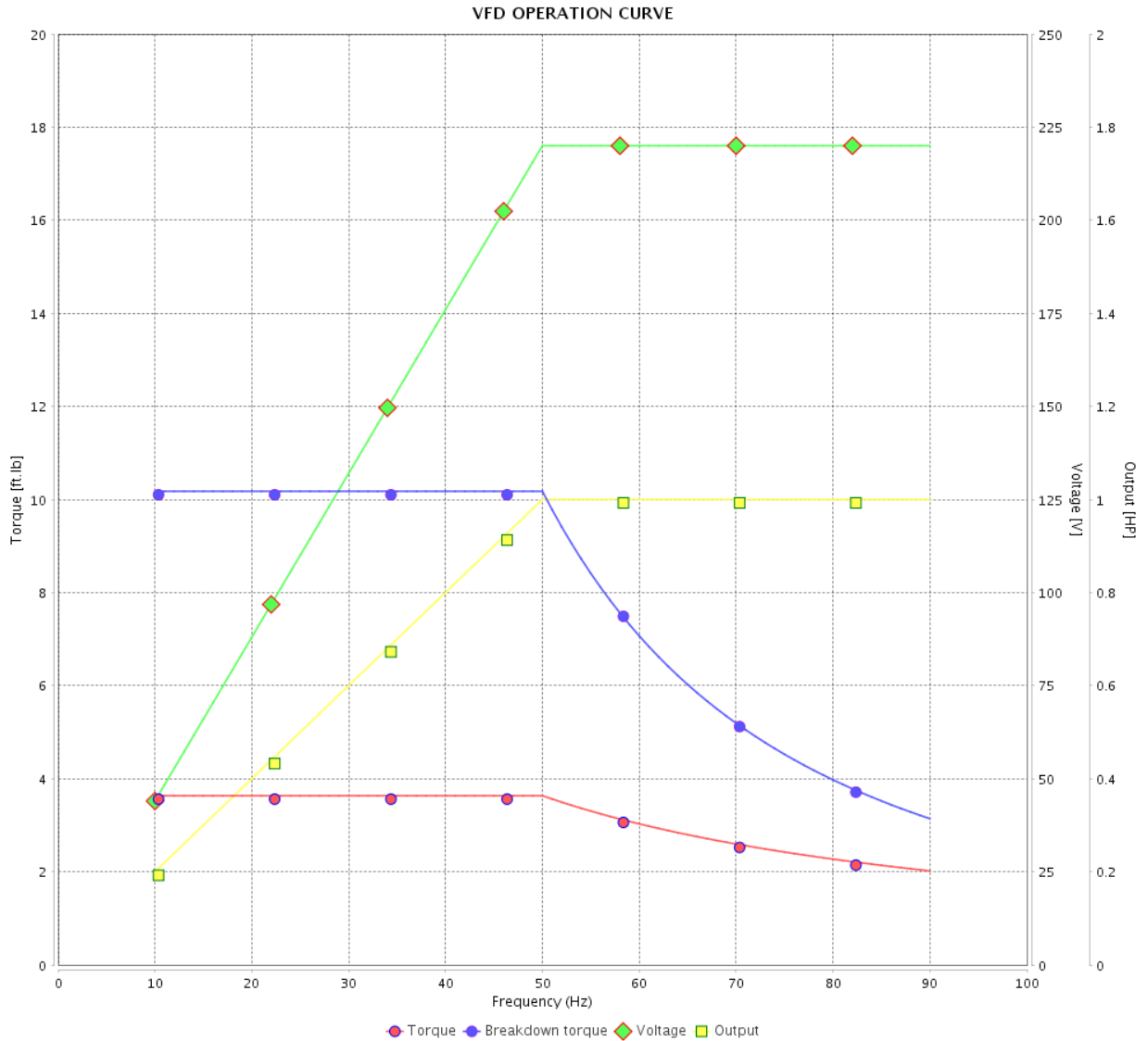
Product line : Premium Efficiency Three-Phase

Product code :

12809660

Catalog # :

00118OT3E56-S



Performance : 220/415 V 50 Hz 4P

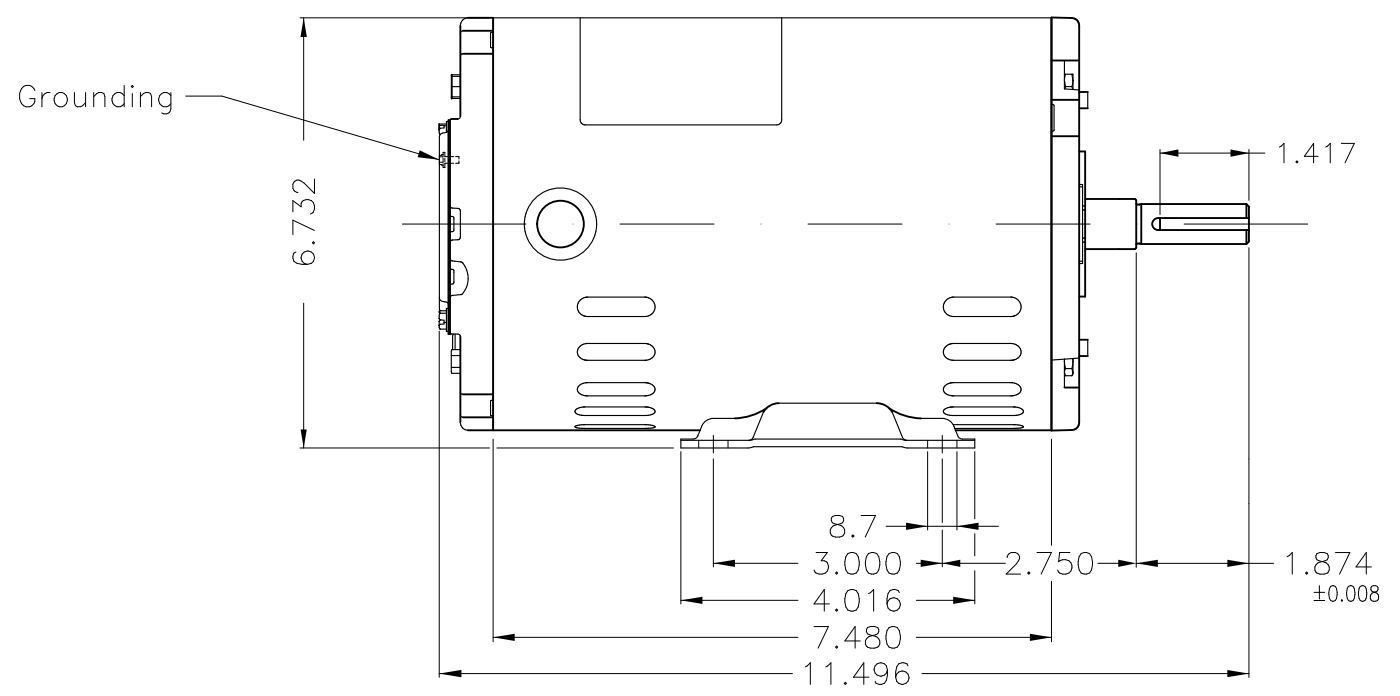
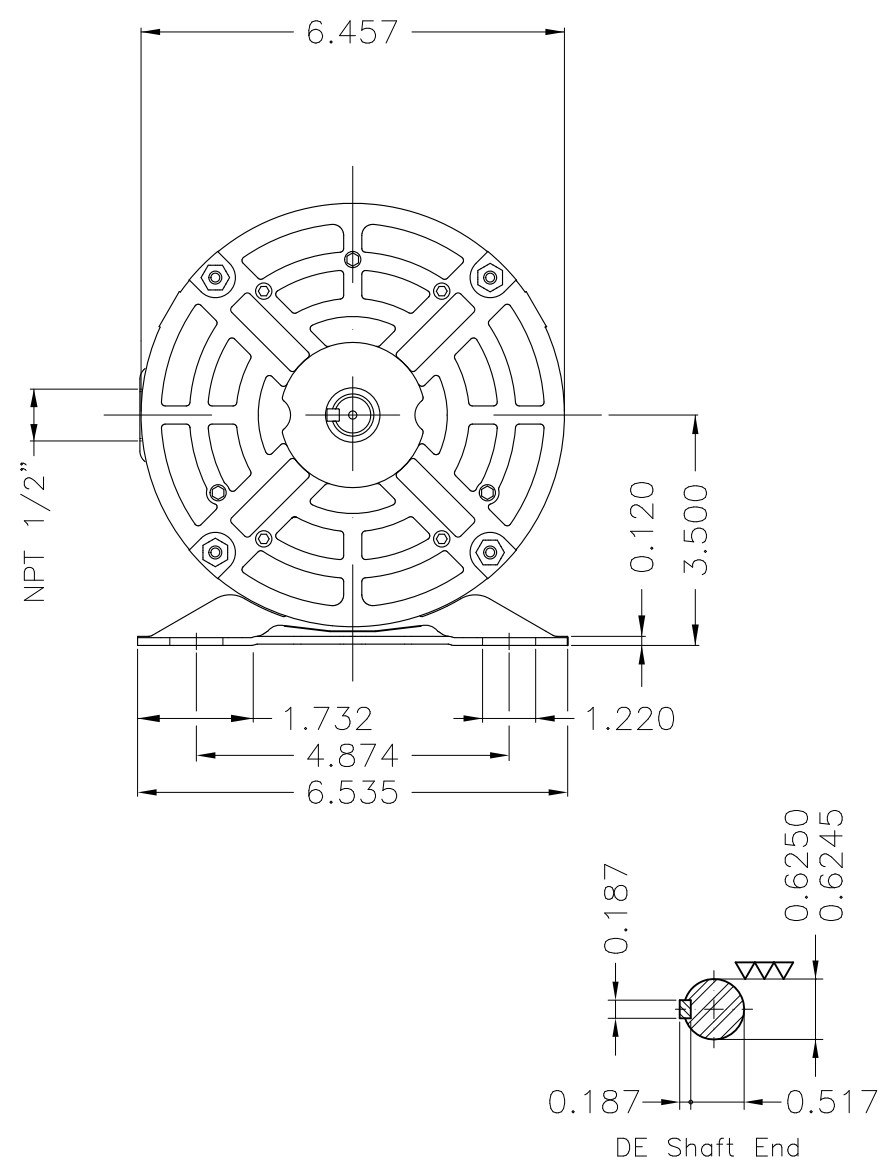
Rated current : 3.32/1.76 A
 LRC : 6.3
 Rated torque : 3.63 ft.lb
 Locked rotor torque : 210 %
 Breakdown torque : 280 %
 Rated speed : 1445 rpm

Moment of inertia (J) : 0.0842 sq.ft.lb
 Duty cycle : Cont.(S1)
 Insulation class : F
 Service factor : 1.15
 Temperature rise : 80 K
 Design : A

Rev.	Changes Summary	Performed	Checked	Date
Performed by			Page	Revision
Checked by				
Date				
			13 / 13	

1 2 3 4 5 6

A
B
C
D
E



Dimensions in inches

Without coating										
Mounting F-1/B3R(D)										
ECM	LOC	SUMMARY OF MODIFICATIONS				EXECUTED	CHECKED	RELEASED	DATE	VER
EXECUTED	PIRWUSER	THREE PH. MOTOR ROLLED STEEL PREM. EFF.				PREVIEW	WDD	SHEET	1 / 1	
CHECKED		FRAME 56 IP21 ODP								
RELEASED										
REL DT.		WMO	Jaragua do Sul	Product Engineering						

1 HP 04 Poles 60 Hz

A



NEMA
Premium



MADE IN MEXICO

MAT: 12809660

W01.T00IC0X0X

MODEL 001180T3E56-S

20APR2022 B/N:

PH 3	Hz 60	HP 1.0
FR 56		KW 0.75
DUTY CONT.		V 230/460
ALT 1000 m.a.s.l.		A 3.14/1.57
INS CL F AT 80K		SFA 3.61/1.81
AMB 40°C	DES A	SF 1.15
ENCL ODP	CODE L	PF 0.72
USABLE @ 208V 3.47A		RPM 1760
SF1.00		AVG.F.L. 83.5%

ALTERNATE RATING: 1.0HP 50Hz 190-220/380-415V SF1.15
3.54-3.34/1.77-1.77A 1440RPM EFF 80.6% (IE2) IEC 60034-1

Inverter duty motor For 80Hz use on VPWM 1000:1 VT, 5:1 CT

DE 6204-ZZ ODE 6202-ZZ MOBIL POLYREX EM



T1-BLU T2-WHT
 T3-ORG T4-YEL
 T5-BLK T6-GRY
 T7-PNK T8-RED
 T9-BRK RED

INTERCHANGE ANY TWO LINE WIRES TO REVERSE THE ROTATION

WARNING: Motor must be grounded in accordance with local and national electrical codes to prevent serious electrical shocks. Disconnect power source before servicing unit.



AVERTISSEMENT: Le moteur doit être mis à la terre conformément aux codes électriques locaux et nationaux afin d'éviter tout choc électrique grave. Déconnectez l'alimentation avant l'entretien de la machine.

