

# DATA SHEET

## Three Phase Induction Motor - Squirrel Cage



Customer	:		
Product line	: Premium Efficiency Three-Phase	Product code :	12809659
		Catalog # :	00118OT3E56C-S
Frame	: 56C	Cooling method	: IC01 - ODP
Insulation class	: F	Mounting	: F-1
Duty cycle	: Cont.(S1)	Rotation <sup>1</sup>	: Both (CW and CCW)
Ambient temperature	: -20°C to +40°C	Starting method	: Direct On Line
Altitude	: 1000 m.a.s.l.	Approx. weight <sup>2</sup>	: 27.3 lb
Design	: A	Moment of inertia (J)	: 0.0842 sq.ft.lb
Output [HP]	1	1	1
Poles	4	4	4
Frequency [Hz]	60	50	50
Rated voltage [V]	230/460	190/380	220/415
Rated current [A]	3.14/1.57	3.54/1.77	3.32/1.76
L. R. Amperes [A]	23.9/11.9	20.9/10.4	20.9/11.1
LRC [A]	7.6x(Code L)	5.9x(Code H)	6.3x(Code J)
No load current [A]	2.20/1.10	2.09/1.05	2.19/1.16
Rated speed [RPM]	1760	1440	1445
Slip [%]	2.22	4.00	3.67
Rated torque [ft.lb]	2.98	3.65	3.63
Locked rotor torque [%]	280	180	210
Breakdown torque [%]	320	250	280
Service factor		1.15	1.15
Temperature rise	80 K	80 K	80 K
Locked rotor time	30s (cold) 17s (hot)	32s (cold) 18s (hot)	30s (cold) 17s (hot)
Noise level <sup>2</sup>	52.0 dB(A)	49.0 dB(A)	49.0 dB(A)
Efficiency (%)	25%	77.3	77.3
	50%	78.5	77.8
	75%	82.5	80.7
	100%	83.5	80.8
Power Factor	25%	0.27	0.29
	50%	0.49	0.53
	75%	0.63	0.67
	100%	0.72	0.76
Bearing type	: Drive end 6204 ZZ Non drive end 6202 ZZ	Foundation loads	
Sealing	: Without Without Bearing Seal Bearing Seal	Max. traction	: 86 lb
		Max. compression	: 113 lb
Lubrication interval	: - -		
Lubricant amount	: - -		
Lubricant type	: Mobil Polyrex EM		
Notes			
USABLE @208V 3.47A SF 1.00 SFA 3.47A			
This revision replaces and cancel the previous one, which must be eliminated. (1) Looking the motor from the shaft end. (2) Measured at 1m and with tolerance of +3dB(A). (3) Approximate weight subject to changes after manufacturing process. (4) At 100% of full load.		These are average values based on tests with sinusoidal power supply, subject to the tolerances stipulated in NEMA MG-1.	
Rev.	Changes Summary	Performed	Checked
			Date
Performed by			
Checked by			Page
Date	14/04/2022		Revision
			1 / 13

# TORQUE AND CURRENT VS SPEED CURVE

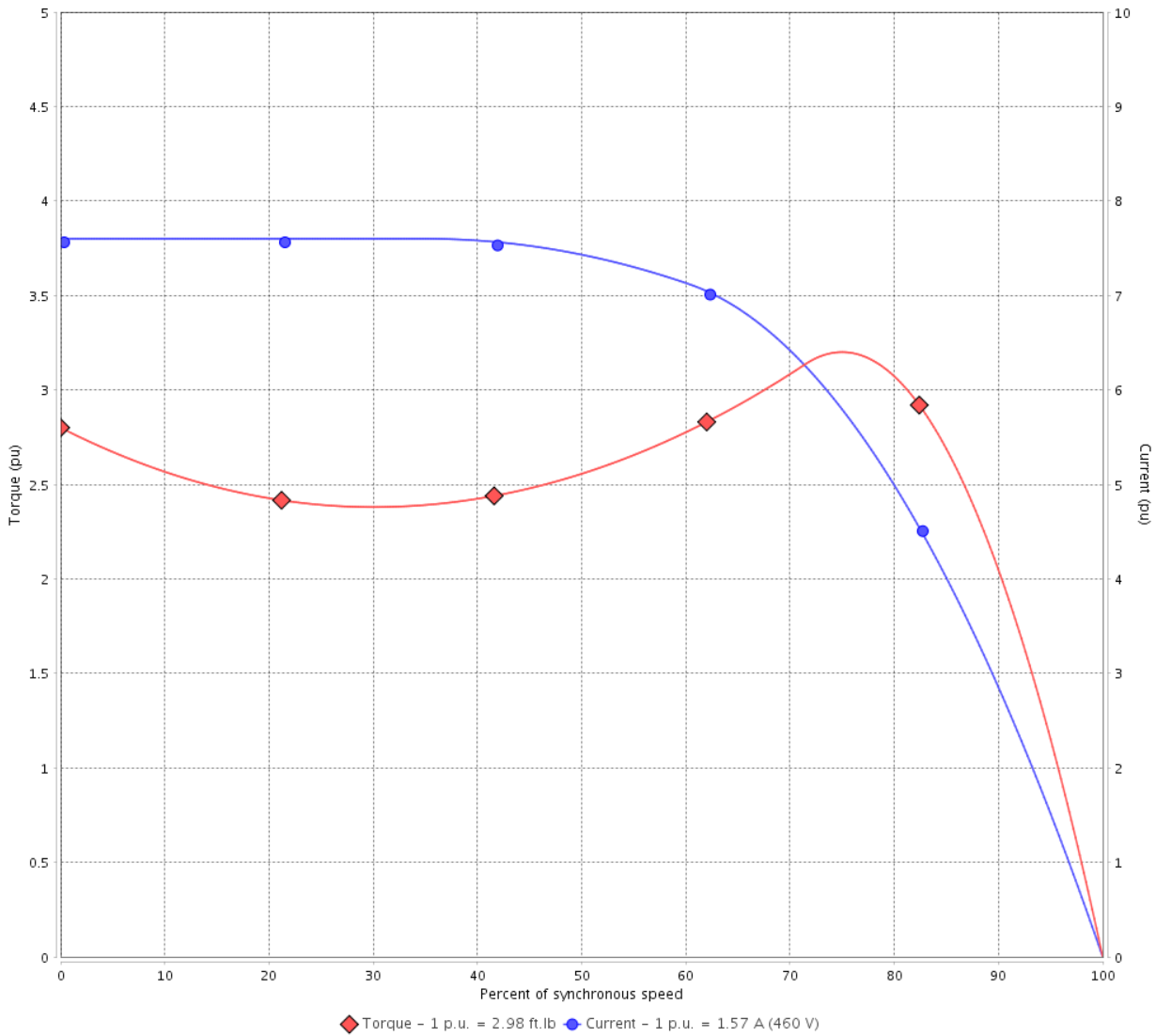
Three Phase Induction Motor - Squirrel Cage



Customer :

Product line : Premium Efficiency Three-Phase      Product code : 12809659  
 Catalog # : 00118OT3E56C-S

TORQUE AND CURRENT VS SPEED CURVE



Performance : 230/460 V 60 Hz 4P

Rated current	: 3.14/1.57 A	Moment of inertia (J)	: 0.0842 sq.ft.lb
LRC	: 7.6	Duty cycle	: Cont.(S1)
Rated torque	: 2.98 ft.lb	Insulation class	: F
Locked rotor torque	: 280 %	Service factor	:
Breakdown torque	: 320 %	Temperature rise	: 80 K
Rated speed	: 1760 rpm	Design	: A

Locked rotor time : 30s (cold) 17s (hot)

Rev.	Changes Summary	Performed	Checked	Date
Performed by		Page		Revision
Checked by		2 / 13		
Date	14/04/2022			

# TORQUE AND CURRENT VS SPEED CURVE



## Three Phase Induction Motor - Squirrel Cage

Customer :

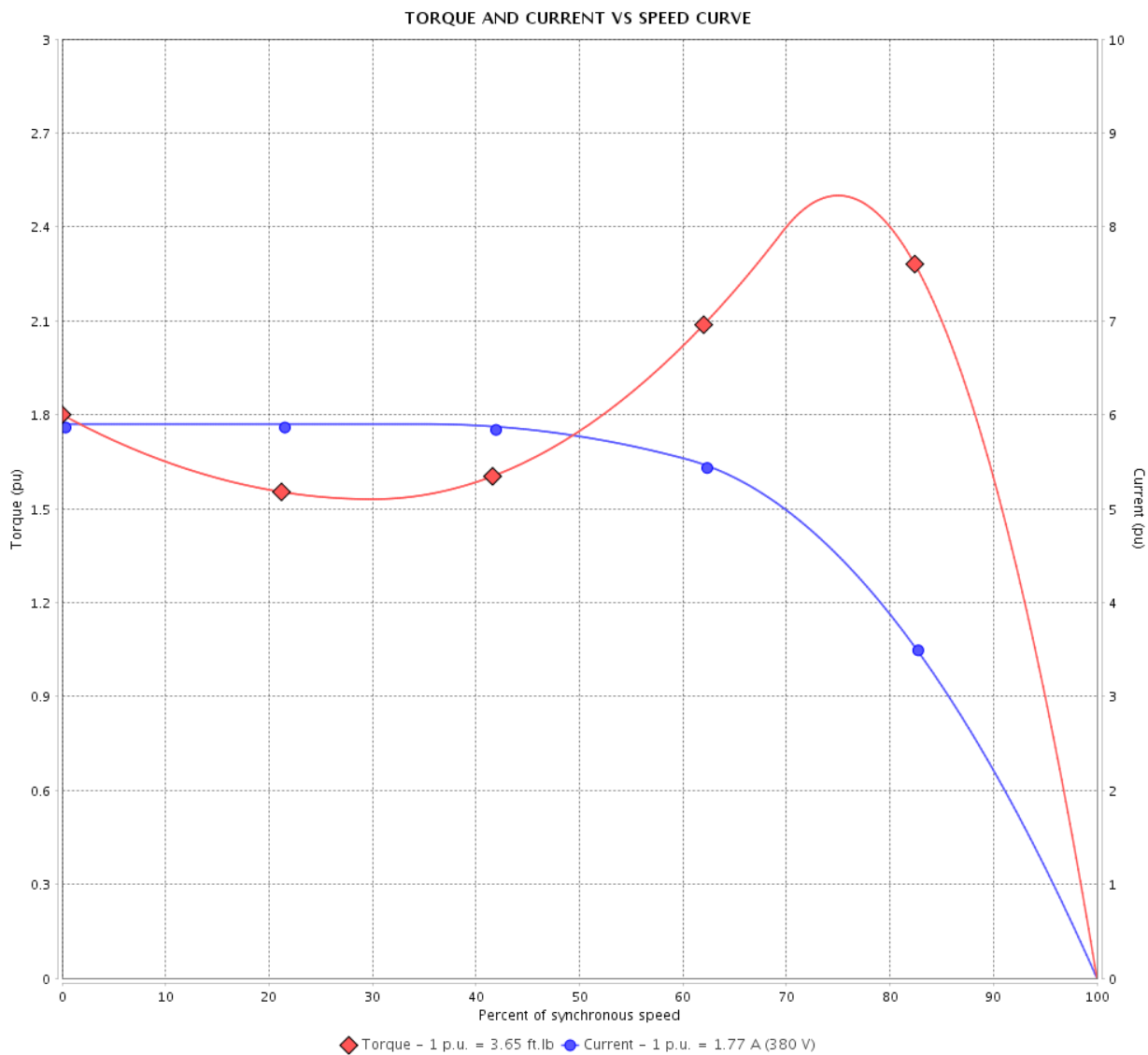
Product line : Premium Efficiency Three-Phase

Product code :

12809659

Catalog # :

00118OT3E56C-S



Performance : 190/380 V 50 Hz 4P

Rated current : 3.54/1.77 A  
 LRC : 5.9  
 Rated torque : 3.65 ft.lb  
 Locked rotor torque : 180 %  
 Breakdown torque : 250 %  
 Rated speed : 1440 rpm

Moment of inertia (J) : 0.0842 sq.ft.lb  
 Duty cycle : Cont.(S1)  
 Insulation class : F  
 Service factor : 1.15  
 Temperature rise : 80 K  
 Design : A

Locked rotor time : 32s (cold) 18s (hot)

Rev.	Changes Summary	Performed	Checked	Date
Performed by			Page 3 / 13	Revision
Checked by				
Date	14/04/2022			

# TORQUE AND CURRENT VS SPEED CURVE

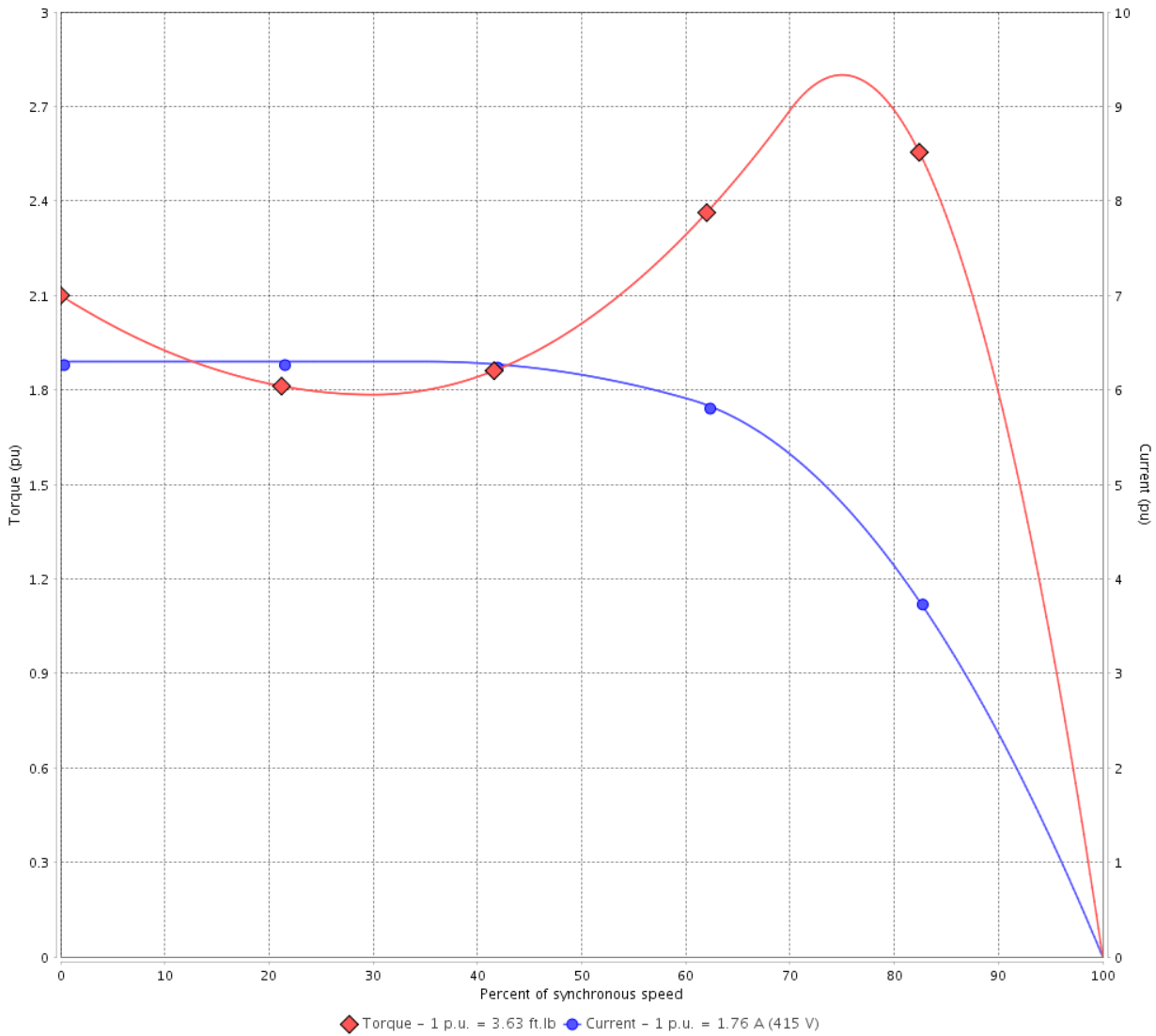
Three Phase Induction Motor - Squirrel Cage



Customer :

Product line : Premium Efficiency Three-Phase      Product code : 12809659  
 Catalog # : 00118OT3E56C-S

TORQUE AND CURRENT VS SPEED CURVE



Performance : 220/415 V 50 Hz 4P

Rated current	: 3.32/1.76 A	Moment of inertia (J)	: 0.0842 sq.ft.lb
LRC	: 6.3	Duty cycle	: Cont.(S1)
Rated torque	: 3.63 ft.lb	Insulation class	: F
Locked rotor torque	: 210 %	Service factor	: 1.15
Breakdown torque	: 280 %	Temperature rise	: 80 K
Rated speed	: 1445 rpm	Design	: A

Locked rotor time : 30s (cold) 17s (hot)

Rev.	Changes Summary	Performed	Checked	Date
Performed by			Page 4 / 13	Revision
Checked by				
Date	14/04/2022			

# LOAD PERFORMANCE CURVE

Three Phase Induction Motor - Squirrel Cage



Customer : \_\_\_\_\_

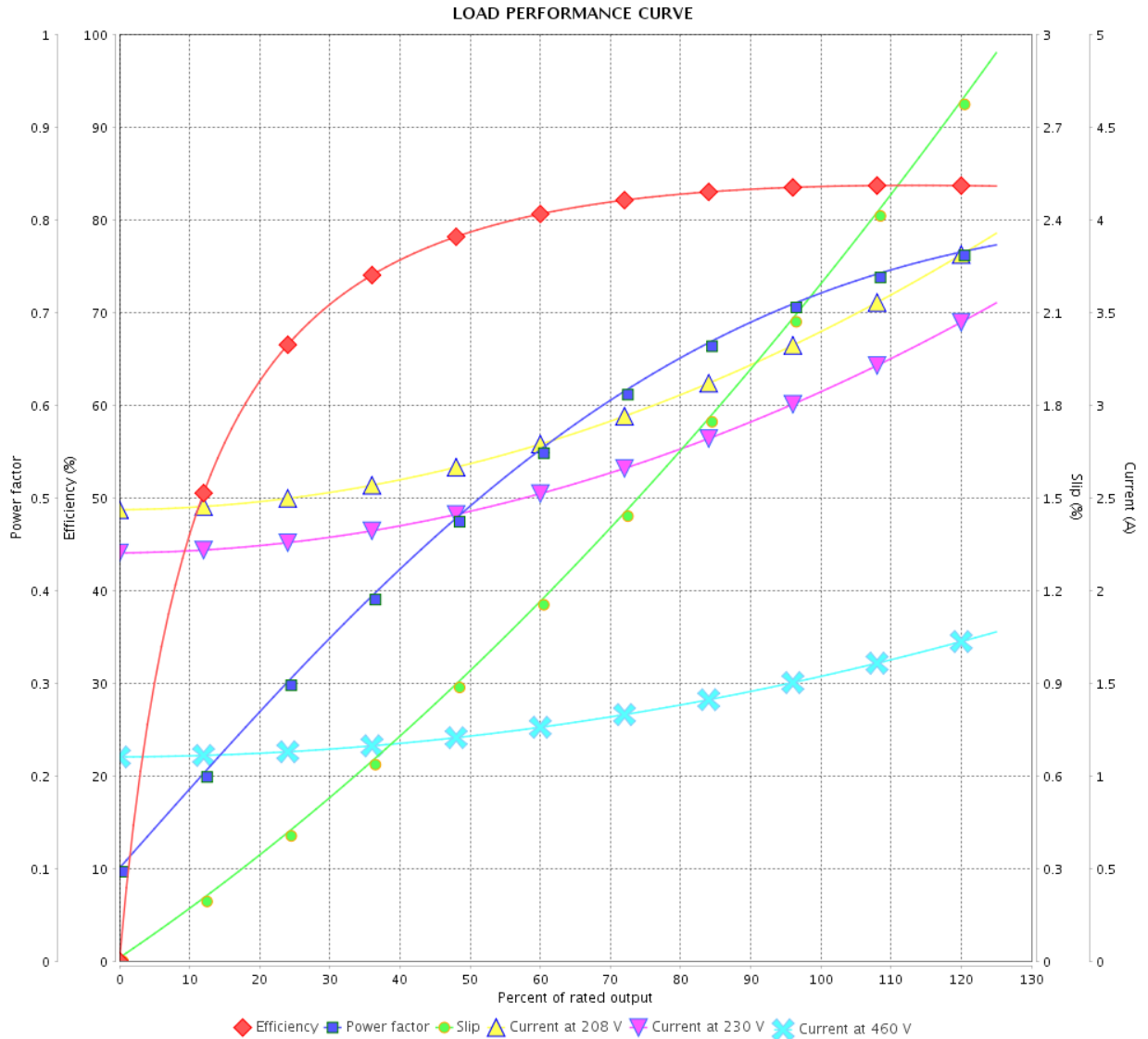
Product line : Premium Efficiency Three-Phase

Product code :

12809659

Catalog # :

00118OT3E56C-S



Performance : 230/460 V 60 Hz 4P

Rated current : 3.14/1.57 A  
 LRC : 7.6  
 Rated torque : 2.98 ft.lb  
 Locked rotor torque : 280 %  
 Breakdown torque : 320 %  
 Rated speed : 1760 rpm

Moment of inertia (J) : 0.0842 sq.ft.lb  
 Duty cycle : Cont.(S1)  
 Insulation class : F  
 Service factor :  
 Temperature rise : 80 K  
 Design : A

Rev.	Changes Summary	Performed	Checked	Date
Performed by			Page	Revision
Checked by				
Date				

# LOAD PERFORMANCE CURVE

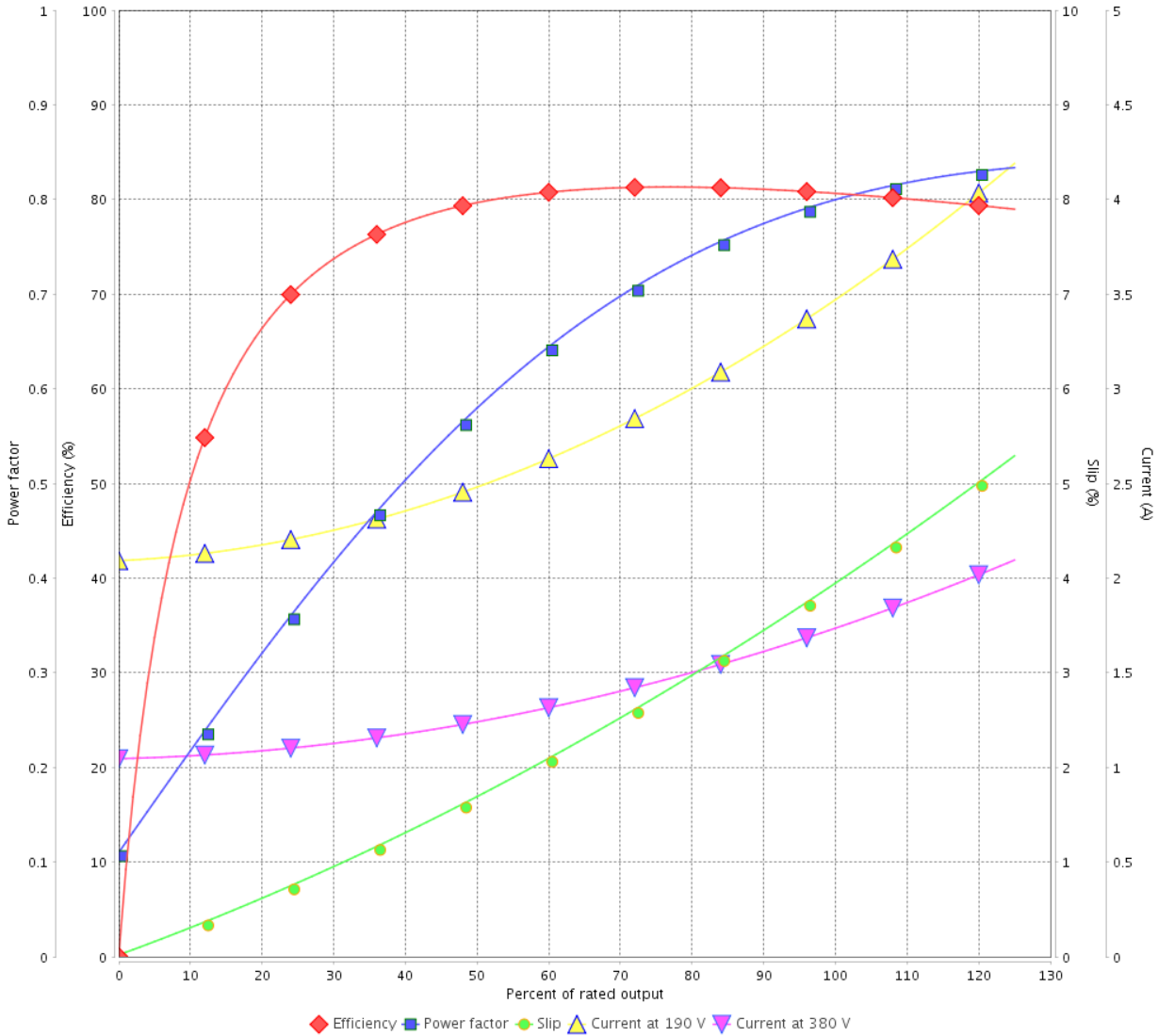
Three Phase Induction Motor - Squirrel Cage



Customer : \_\_\_\_\_

Product line : Premium Efficiency Three-Phase      Product code : 12809659  
 Catalog # : 00118OT3E56C-S

LOAD PERFORMANCE CURVE



Performance : 190/380 V 50 Hz 4P

Rated current	: 3.54/1.77 A	Moment of inertia (J)	: 0.0842 sq.ft.lb
LRC	: 5.9	Duty cycle	: Cont.(S1)
Rated torque	: 3.65 ft.lb	Insulation class	: F
Locked rotor torque	: 180 %	Service factor	: 1.15
Breakdown torque	: 250 %	Temperature rise	: 80 K
Rated speed	: 1440 rpm	Design	: A

Rev.	Changes Summary	Performed	Checked	Date
Performed by			Page	Revision
Checked by			6 / 13	
Date	14/04/2022			

# LOAD PERFORMANCE CURVE

## Three Phase Induction Motor - Squirrel Cage



Customer : \_\_\_\_\_

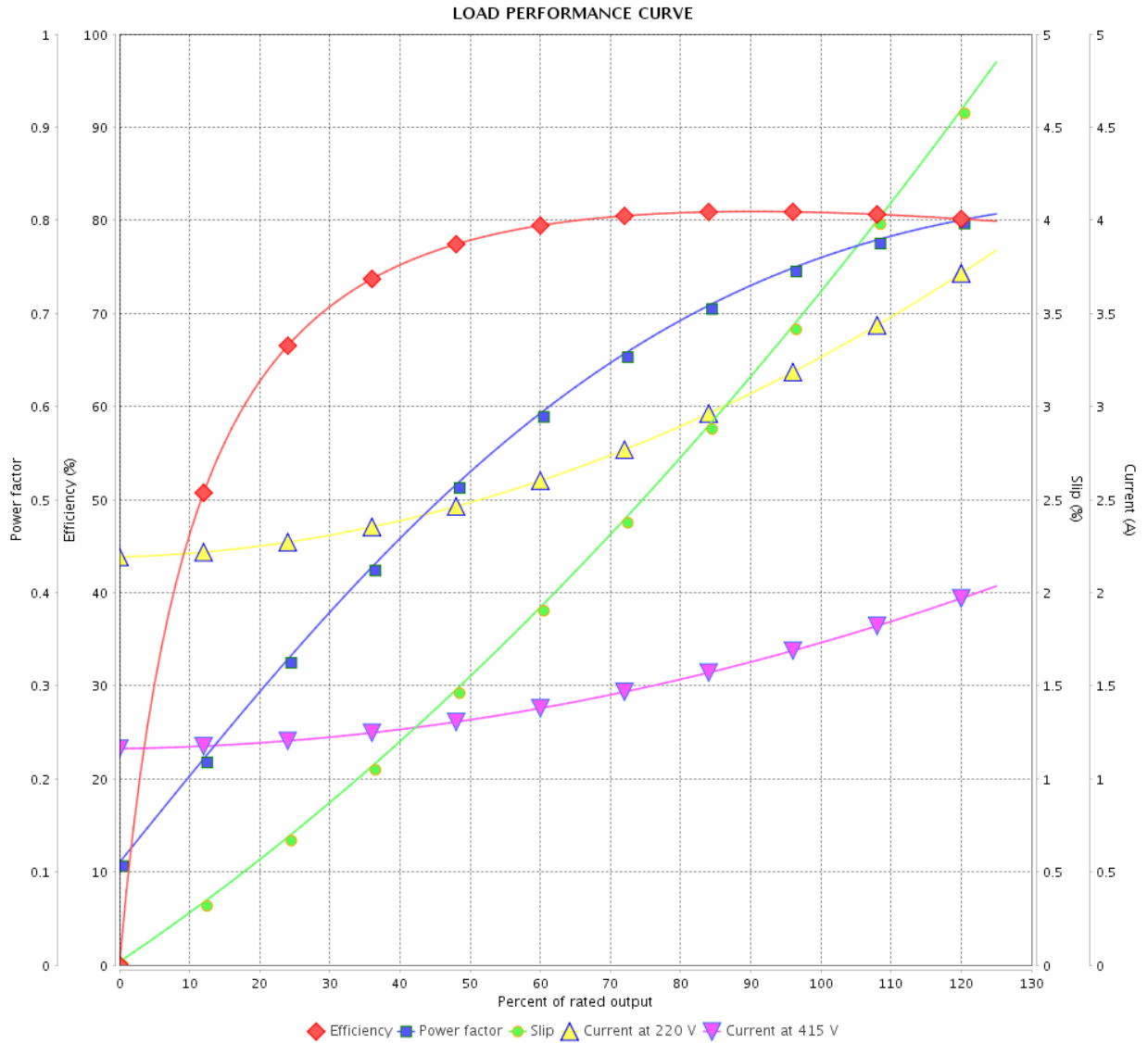
Product line : Premium Efficiency Three-Phase

Product code :

12809659

Catalog # :

00118OT3E56C-S



Performance : 220/415 V 50 Hz 4P

Rated current : 3.32/1.76 A  
 LRC : 6.3  
 Rated torque : 3.63 ft.lb  
 Locked rotor torque : 210 %  
 Breakdown torque : 280 %  
 Rated speed : 1445 rpm

Moment of inertia (J) : 0.0842 sq.ft.lb  
 Duty cycle : Cont.(S1)  
 Insulation class : F  
 Service factor : 1.15  
 Temperature rise : 80 K  
 Design : A

Rev.	Changes Summary	Performed	Checked	Date
Performed by			Page	Revision
Checked by				
Date				

# THERMAL LIMIT CURVE

## Three Phase Induction Motor - Squirrel Cage



Customer : \_\_\_\_\_

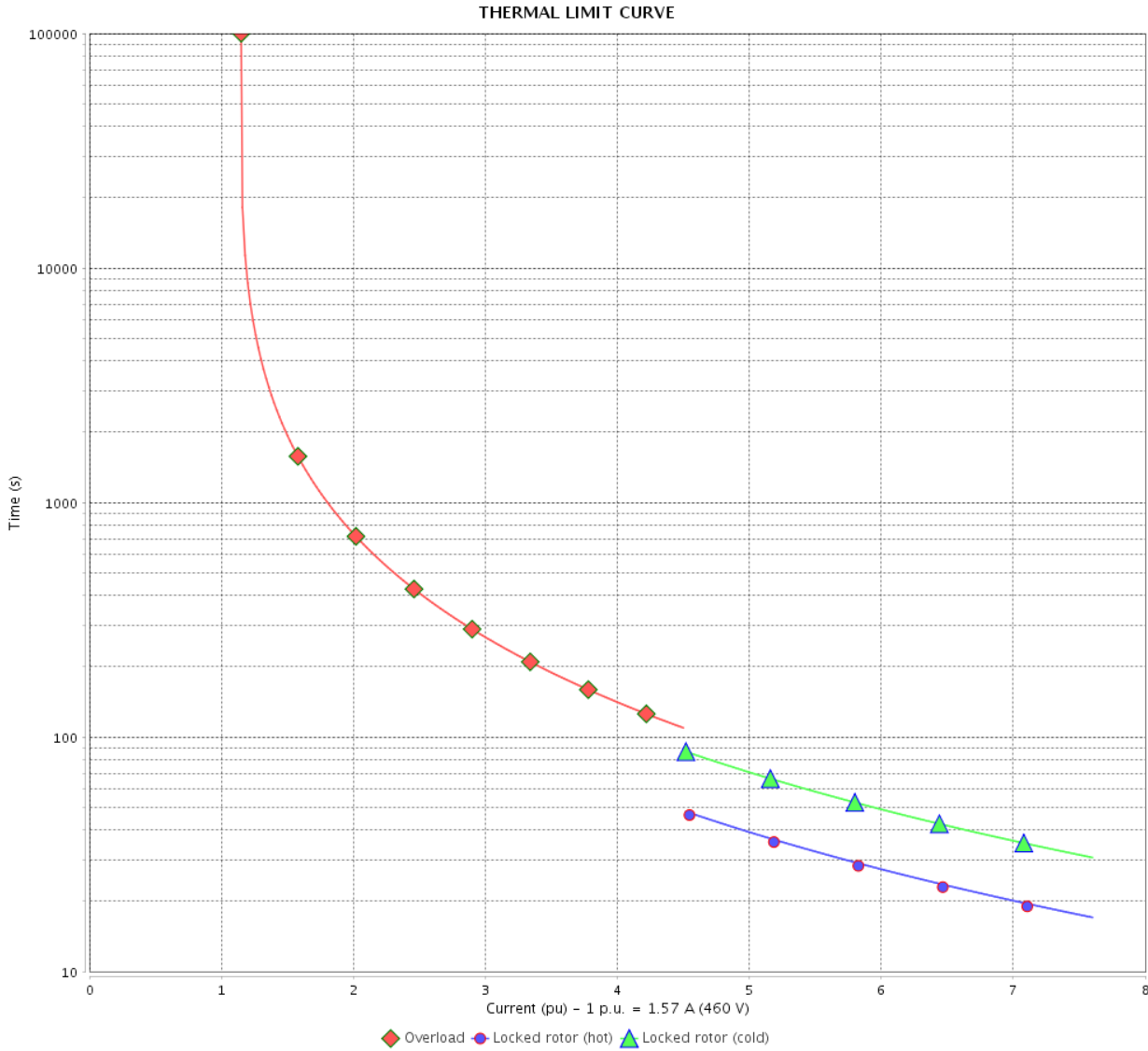
Product line : Premium Efficiency Three-Phase

Product code :

12809659

Catalog # :

00118OT3E56C-S



Performance : 230/460 V 60 Hz 4P

Rated current : 3.14/1.57 A  
 LRC : 7.6  
 Rated torque : 2.98 ft.lb  
 Locked rotor torque : 280 %  
 Breakdown torque : 320 %  
 Rated speed : 1760 rpm

Moment of inertia (J) : 0.0842 sq.ft.lb  
 Duty cycle : Cont.(S1)  
 Insulation class : F  
 Service factor :  
 Temperature rise : 80 K  
 Design : A

Heating constant

Cooling constant

Rev.	Changes Summary	Performed	Checked	Date
Performed by				
Checked by				
Date				
		Page	Revision	
		8 / 13		



# THERMAL LIMIT CURVE

## Three Phase Induction Motor - Squirrel Cage



Customer : \_\_\_\_\_

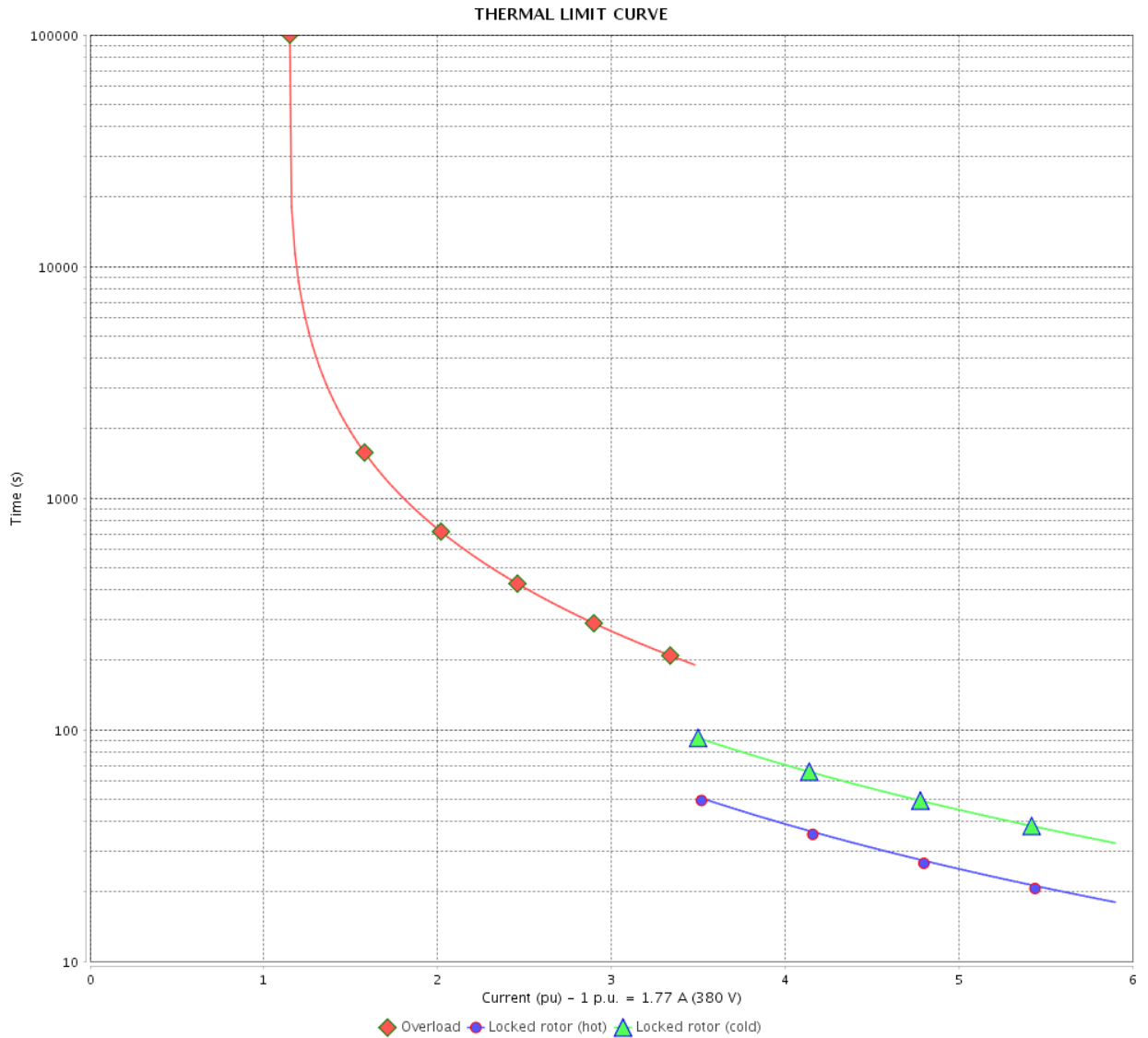
Product line : Premium Efficiency Three-Phase

Product code :

12809659

Catalog # :

00118OT3E56C-S



Performance : 190/380 V 50 Hz 4P

Rated current : 3.54/1.77 A  
 LRC : 5.9  
 Rated torque : 3.65 ft.lb  
 Locked rotor torque : 180 %  
 Breakdown torque : 250 %  
 Rated speed : 1440 rpm

Moment of inertia (J) : 0.0842 sq.ft.lb  
 Duty cycle : Cont.(S1)  
 Insulation class : F  
 Service factor : 1.15  
 Temperature rise : 80 K  
 Design : A

Heating constant

Cooling constant

Rev.	Changes Summary	Performed	Checked	Date
Performed by				
Checked by				
Date				
		Page	Revision	
		9 / 13		

# THERMAL LIMIT CURVE

## Three Phase Induction Motor - Squirrel Cage



Customer : \_\_\_\_\_

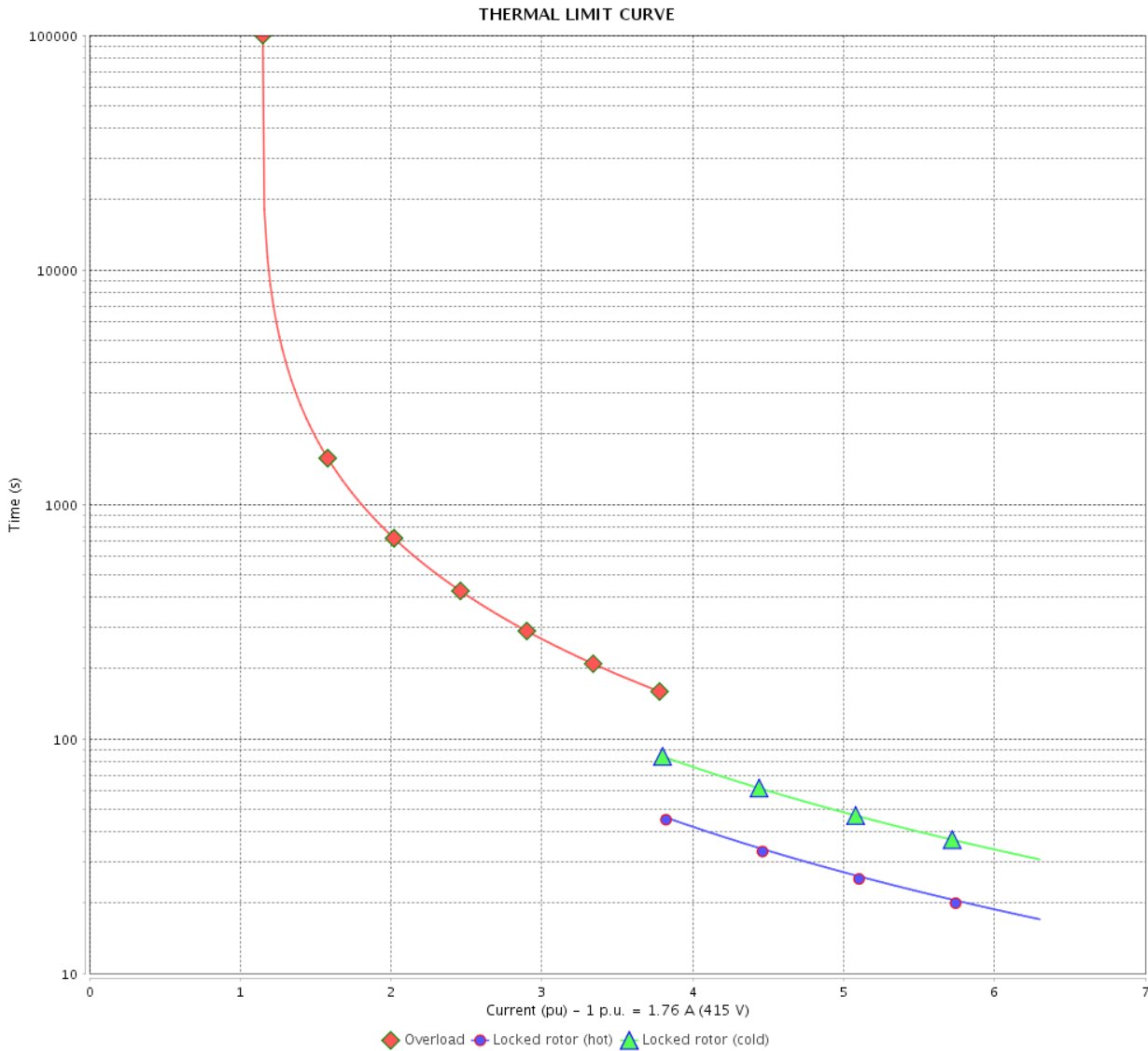
Product line : Premium Efficiency Three-Phase

Product code :

12809659

Catalog # :

001180T3E56C-S



Performance : 220/415 V 50 Hz 4P

Rated current : 3.32/1.76 A  
 LRC : 6.3  
 Rated torque : 3.63 ft.lb  
 Locked rotor torque : 210 %  
 Breakdown torque : 280 %  
 Rated speed : 1445 rpm

Moment of inertia (J) : 0.0842 sq.ft.lb  
 Duty cycle : Cont.(S1)  
 Insulation class : F  
 Service factor : 1.15  
 Temperature rise : 80 K  
 Design : A

Heating constant

Cooling constant

Rev.	Changes Summary	Performed	Checked	Date
Performed by		Page		Revision
Checked by		10 / 13		
Date		14/04/2022		

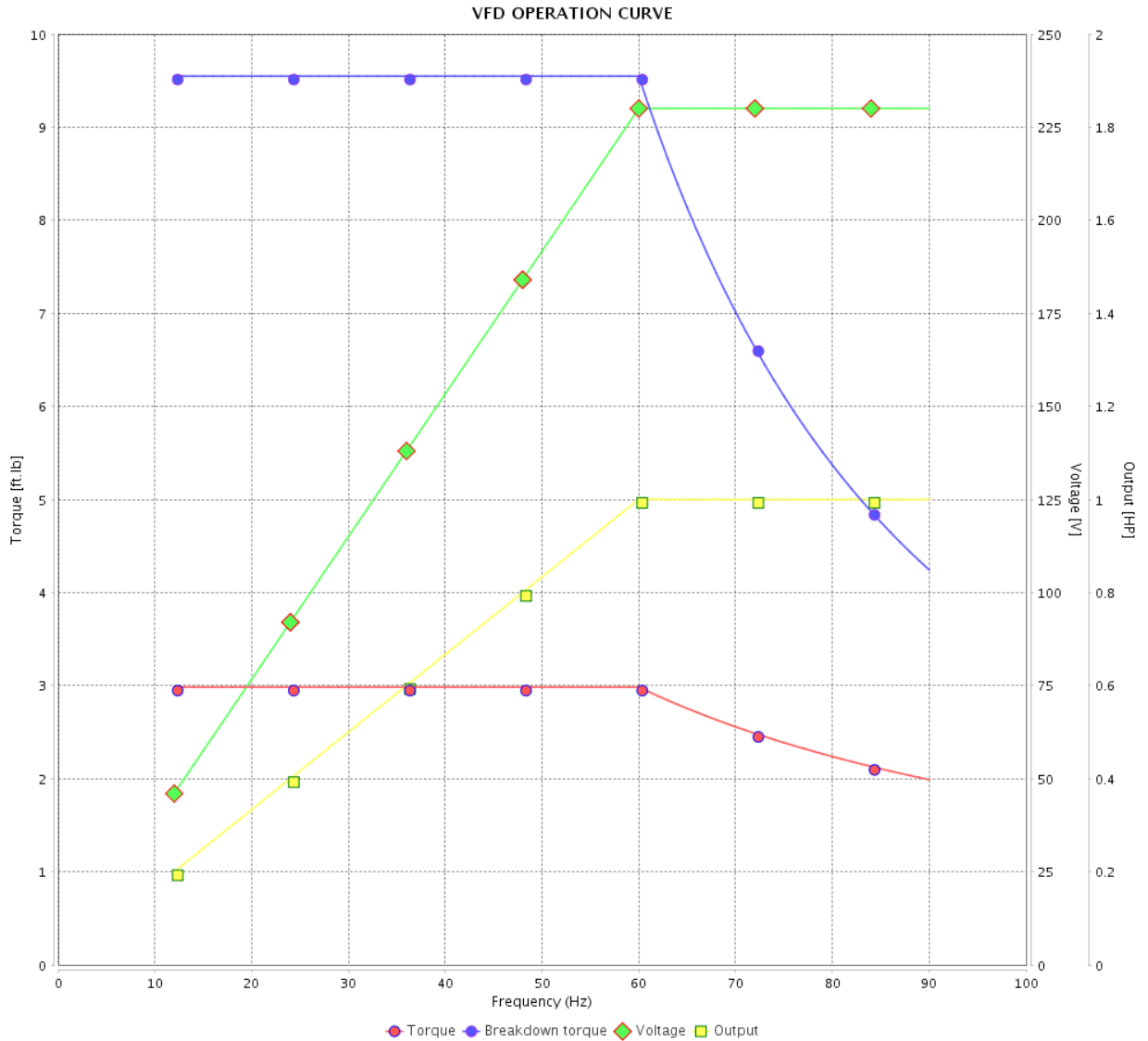
# VFD OPERATION CURVE

## Three Phase Induction Motor - Squirrel Cage



Customer : \_\_\_\_\_

Product line : Premium Efficiency Three-Phase      Product code : 12809659  
 Catalog # : \_\_\_\_\_      Catalog # : 00118OT3E56C-S



Performance : 230/460 V 60 Hz 4P

Rated current : 3.14/1.57 A  
 LRC : 7.6  
 Rated torque : 2.98 ft.lb  
 Locked rotor torque : 280 %  
 Breakdown torque : 320 %  
 Rated speed : 1760 rpm

Moment of inertia (J) : 0.0842 sq.ft.lb  
 Duty cycle : Cont.(S1)  
 Insulation class : F  
 Service factor :  
 Temperature rise : 80 K  
 Design : A

Rev.	Changes Summary	Performed	Checked	Date
Performed by			Page	Revision
Checked by				
Date				

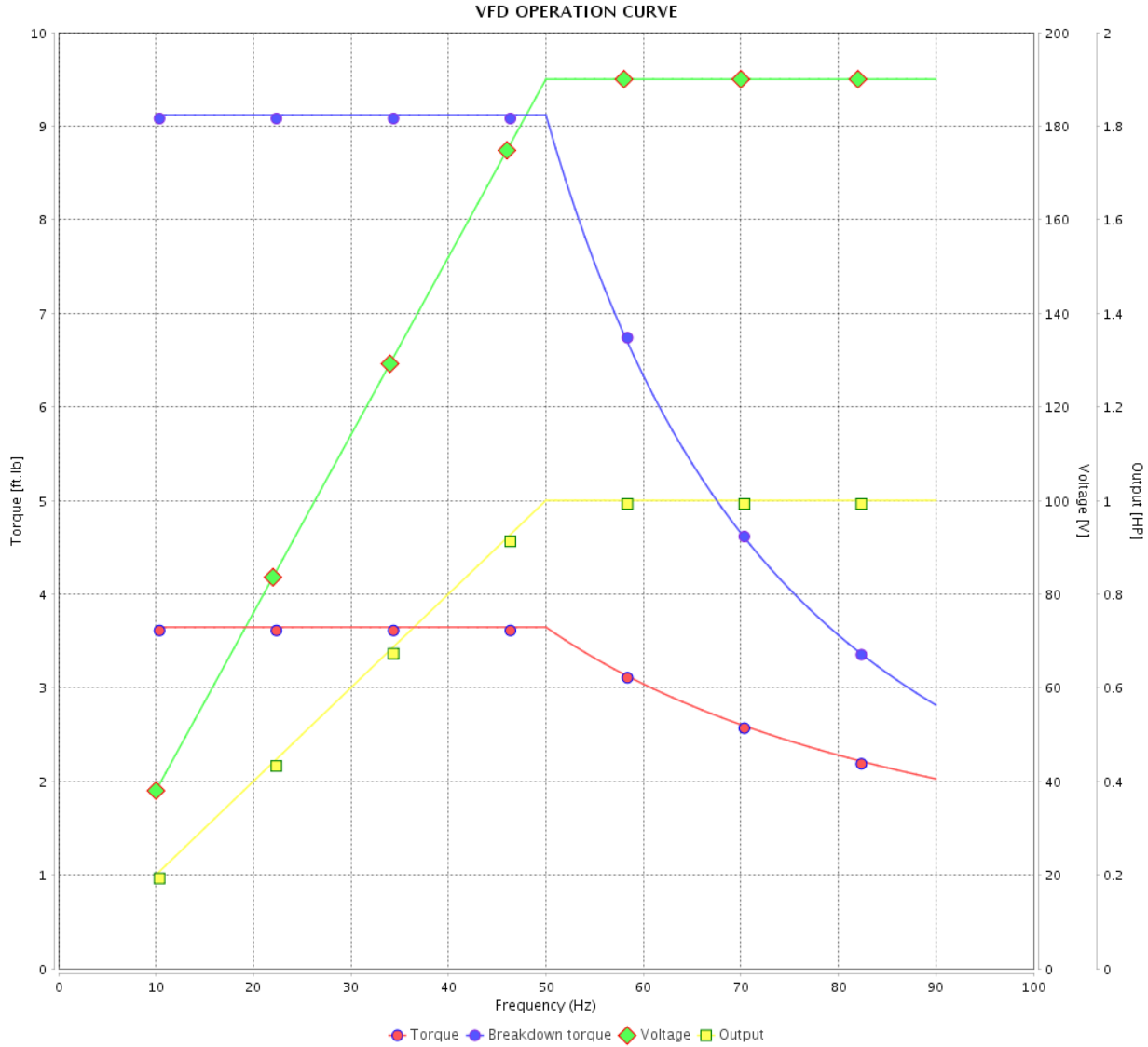
# VFD OPERATION CURVE

Three Phase Induction Motor - Squirrel Cage



Customer :

Product line : Premium Efficiency Three-Phase      Product code : 12809659  
 Catalog # : 00118OT3E56C-S



Performance : 190/380 V 50 Hz 4P

Rated current	: 3.54/1.77 A	Moment of inertia (J)	: 0.0842 sq.ft.lb
LRC	: 5.9	Duty cycle	: Cont.(S1)
Rated torque	: 3.65 ft.lb	Insulation class	: F
Locked rotor torque	: 180 %	Service factor	: 1.15
Breakdown torque	: 250 %	Temperature rise	: 80 K
Rated speed	: 1440 rpm	Design	: A

Rev.	Changes Summary	Performed	Checked	Date
Performed by			Page 12 / 13	Revision
Checked by				
Date	14/04/2022			

# VFD OPERATION CURVE

## Three Phase Induction Motor - Squirrel Cage



Customer :

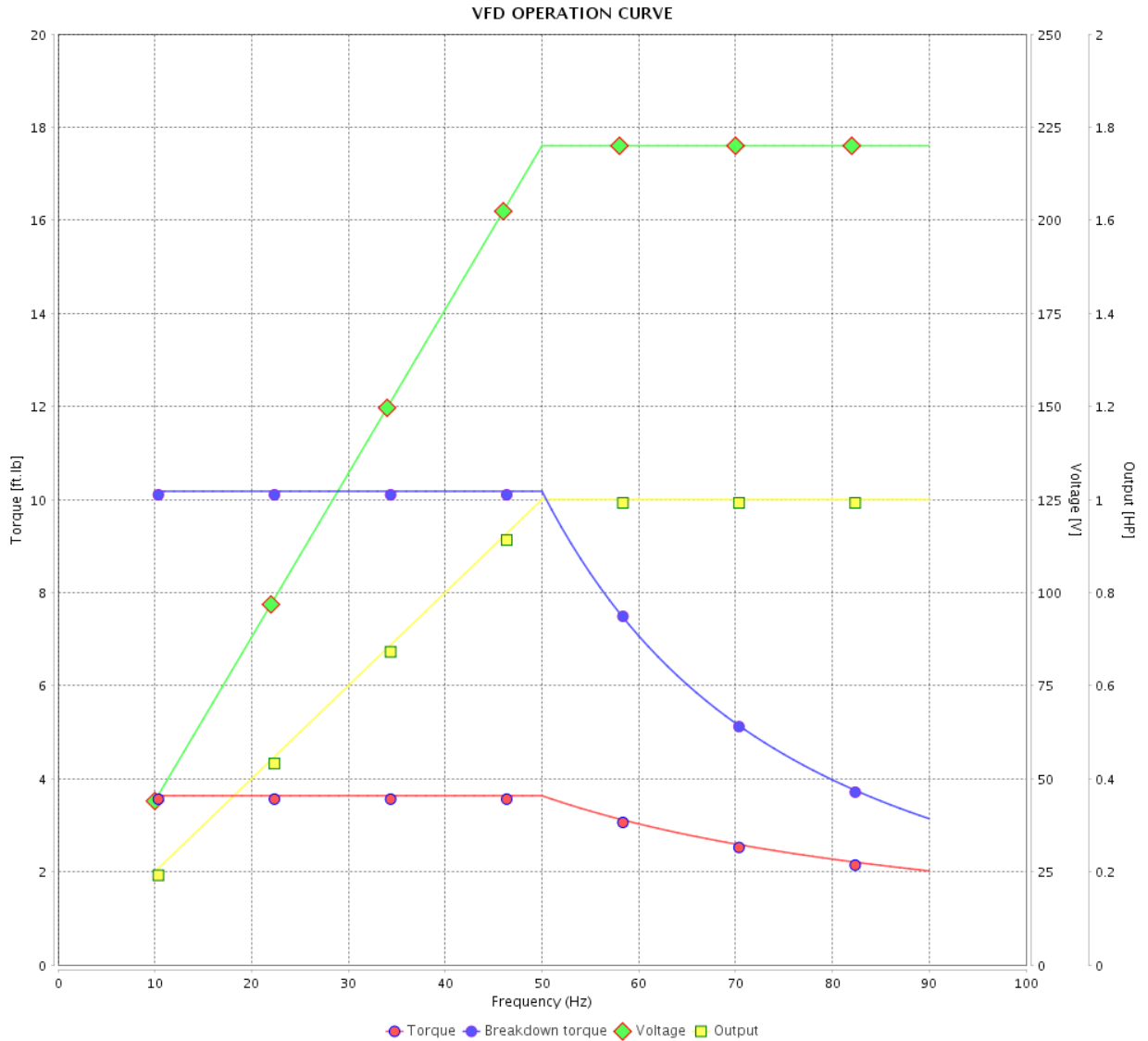
Product line : Premium Efficiency Three-Phase

Product code :

12809659

Catalog # :

00118OT3E56C-S



Performance : 220/415 V 50 Hz 4P

Rated current : 3.32/1.76 A  
 LRC : 6.3  
 Rated torque : 3.63 ft.lb  
 Locked rotor torque : 210 %  
 Breakdown torque : 280 %  
 Rated speed : 1445 rpm

Moment of inertia (J) : 0.0842 sq.ft.lb  
 Duty cycle : Cont.(S1)  
 Insulation class : F  
 Service factor : 1.15  
 Temperature rise : 80 K  
 Design : A

Rev.	Changes Summary	Performed	Checked	Date
Performed by			Page 13 / 13	Revision
Checked by				
Date	14/04/2022			

1 2 3 4 5 6

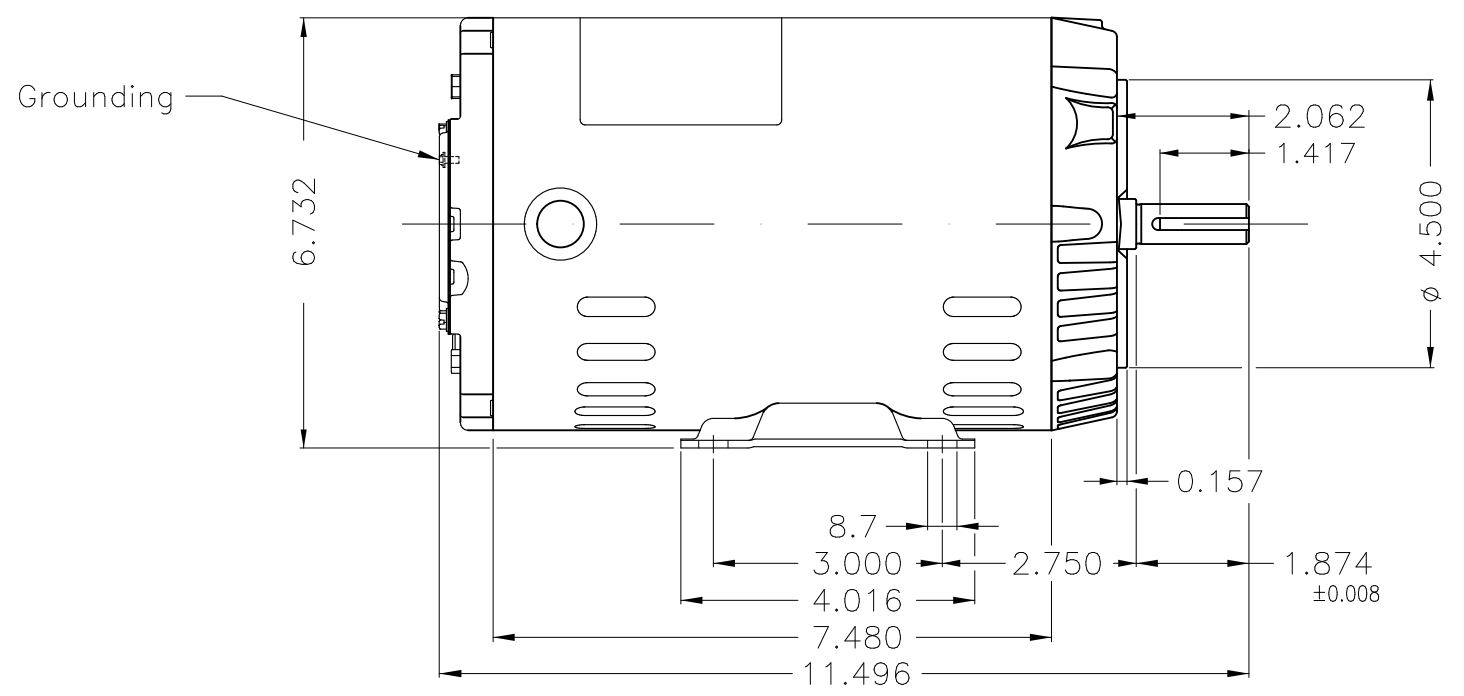
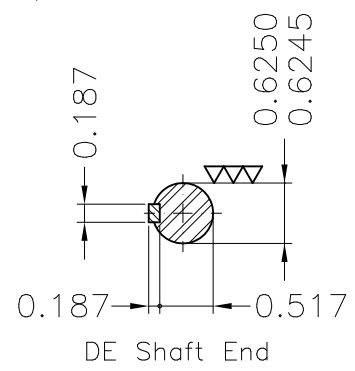
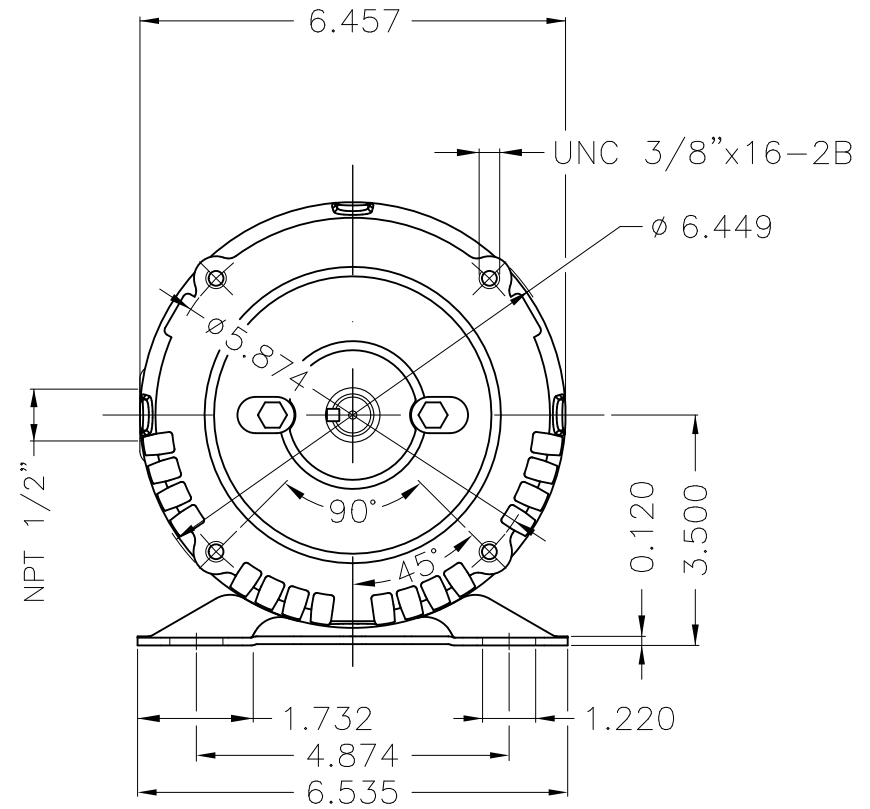
A

B

C

D

E



Dimensions in inches

Without coating										
Mounting F-1/B34R(D)										
ECM	LOC	SUMMARY OF MODIFICATIONS				EXECUTED	CHECKED	RELEASED	DATE	VER
EXECUTED	PIRWUSER	THREE PH. MOTOR ROLLED STEEL PREM. EFF.					<b>PREVIEW</b> WDD			
CHECKED		FRAME 56C IP21 ODP								
RELEASED										
REL DT.		WMO	Jaragua do Sul	Product Engineering	SHEET	1 / 1				

1 HP 04 Poles 60 Hz

A

XME A3



**NEMA**  
**Premium**



MADE IN MEXICO

**MAT: 12809659**

**W01.T00IC0X0X**

**MODEL 001180T3E56C-S**

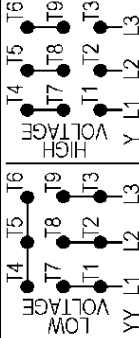
**15MAR2022 B/N:**

<b>PH 3</b>	<b>Hz 60</b>	<b>HP 1.0</b>
<b>FR 56C</b>		<b>KW 0.75</b>
<b>DUTY CONT.</b>		<b>V 230/460</b>
<b>ALT 1000 m.a.s.l.</b>		<b>A 3.14/1.57</b>
<b>INS CL F AT 80K</b>		<b>SFA 3.61/1.81</b>
<b>AMB 40°C</b>	<b>DES A</b>	<b>SF 1.15</b>
<b>ENCL ODP</b>	<b>CODE L</b>	<b>PF 0.72</b>
<b>USABLE @ 208V 3.47A</b>		<b>RPM 1760</b>
<b>SF1.00</b>		<b>AVG.F.L. 83.5%</b>

**ALTERNATE RATING: 1.0HP 50Hz 190-220/380-415V SF1.15**  
**3.54-3.34/1.77-1.77A 1440RPM EFF 80.6% (IE2) IEC 60034-1**

Inverter duty motor For 80Hz use on VPWM 1000:1 VT, 5:1 CT

<b>DE 6204-ZZ</b>	<b>ODE 6202-ZZ</b>	<b>MOBIL POLYREX EM</b>
-------------------	--------------------	-------------------------



T1-BLU T2-WHT  
 T3-ORG T4-YEL  
 T5-BLK T6-GRY  
 T7-PNK T8-RED  
 T9-BRK RED

INTERCHANGE ANY TWO LINE WIRES TO REVERSE THE ROTATION

**WARNING:** Motor must be grounded in accordance with local and national electrical codes to prevent serious electrical shocks. Disconnect power source before servicing unit.



**AVERTISSEMENT:** Le moteur doit être mis à la terre conformément aux codes électriques locaux et nationaux afin d'éviter tout choc électrique grave. Déconnectez l'alimentation avant l'entretien de la machine.

