

DATA SHEET

Three Phase Induction Motor - Squirrel Cage



Customer :			
Product line	: 00021 Premium Efficiency Three-Phase	Product code :	13230227
		Catalog # :	00118OT3ERB56-S
Frame	: 56	Cooling method	: IC01 - ODP
Insulation class	: F	Mounting	: F-1
Duty cycle	: Cont.(S1)	Rotation ¹	: Both (CW and CCW)
Ambient temperature	: -20°C to +40°C	Starting method	: Direct On Line
Altitude	: 1000 m.a.s.l.	Approx. weight ²	: 30.3 lb
Design	: A	Moment of inertia (J)	: 0.0842 sq.ft.lb
Output [HP]	1	1	1
Poles	4	4	4
Frequency [Hz]	60	50	50
Rated voltage [V]	230/460	190/380	220/415
Rated current [A]	3.14/1.57	3.54/1.77	3.32/1.76
L. R. Amperes [A]	23.9/11.9	20.9/10.4	20.9/11.1
LRC [A]	7.6x(Code L)	5.9x(Code H)	6.3x(Code J)
No load current [A]	2.20/1.10	2.09/1.05	2.19/1.16
Rated speed [RPM]	1760	1440	1445
Slip [%]	2.22	4.00	3.67
Rated torque [ft.lb]	2.98	3.65	3.63
Locked rotor torque [%]	280	180	210
Breakdown torque [%]	320	250	280
Service factor		1.15	1.15
Temperature rise	80 K	80 K	80 K
Locked rotor time	30s (cold) 17s (hot)	32s (cold) 18s (hot)	30s (cold) 17s (hot)
Noise level ²	52.0 dB(A)	49.0 dB(A)	49.0 dB(A)
Efficiency (%)	25%	77.3	77.3
	50%	78.5	79.6
	75%	82.5	81.4
	100%	83.5	80.6
Power Factor	25%	0.27	0.29
	50%	0.49	0.53
	75%	0.63	0.67
	100%	0.72	0.76
Bearing type	: <u>Drive end</u> 6204 ZZ <u>Non drive end</u> 6202 ZZ	Foundation loads	
Sealing	: Without Without Bearing Seal Bearing Seal	Max. traction	: 85 lb
		Max. compression	: 115 lb
Lubrication interval	: - -		
Lubricant amount	: - -		
Lubricant type	: Mobil Polyrex EM		
Notes USABLE @208V 3.47A SF 1.00 SFA 3.47A			
This revision replaces and cancel the previous one, which must be eliminated. (1) Looking the motor from the shaft end. (2) Measured at 1m and with tolerance of +3dB(A). (3) Approximate weight subject to changes after manufacturing process. (4) At 100% of full load.		These are average values based on tests with sinusoidal power supply, subject to the tolerances stipulated in NEMA MG-1.	
Rev.	Changes Summary	Performed	Checked
			Date
Performed by			
Checked by			Page
Date	11/04/2022		Revision
			1 / 16

TORQUE AND CURRENT VS SPEED CURVE

Three Phase Induction Motor - Squirrel Cage



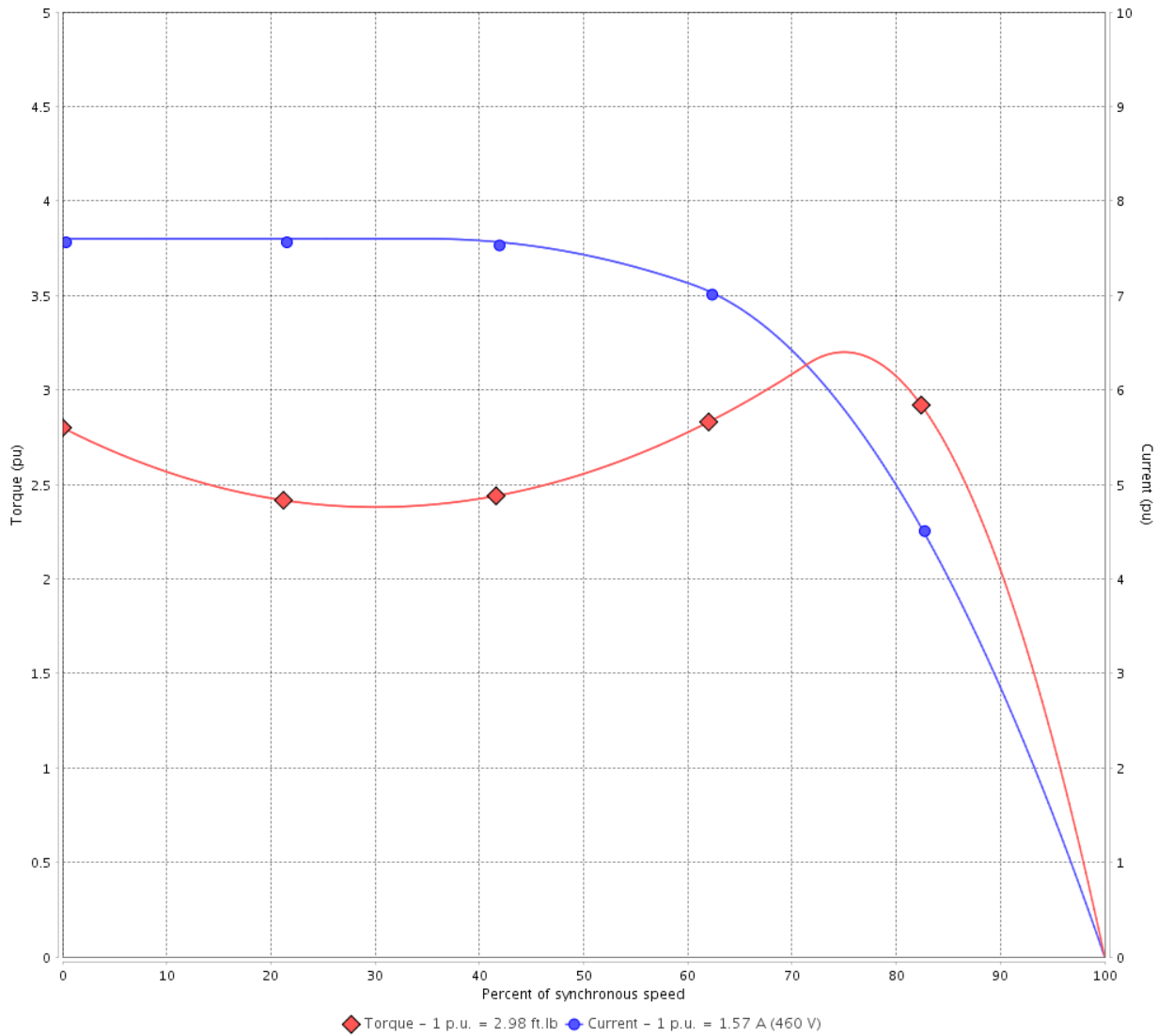
Customer :

Product line : 00021 Premium Efficiency Three-Phase

Product code : 13230227

Catalog # : 00118OT3ERB56-S

TORQUE AND CURRENT VS SPEED CURVE



Performance : 230/460 V 60 Hz 4P

Rated current	: 3.14/1.57 A	Moment of inertia (J)	: 0.0842 sq.ft.lb
LRC	: 7.6	Duty cycle	: Cont.(S1)
Rated torque	: 2.98 ft.lb	Insulation class	: F
Locked rotor torque	: 280 %	Service factor	:
Breakdown torque	: 320 %	Temperature rise	: 80 K
Rated speed	: 1760 rpm	Design	: A

Locked rotor time : 30s (cold) 17s (hot)

Rev.	Changes Summary	Performed	Checked	Date
Performed by			Page 2 / 16	Revision
Checked by				
Date	11/04/2022			

TORQUE AND CURRENT VS SPEED CURVE



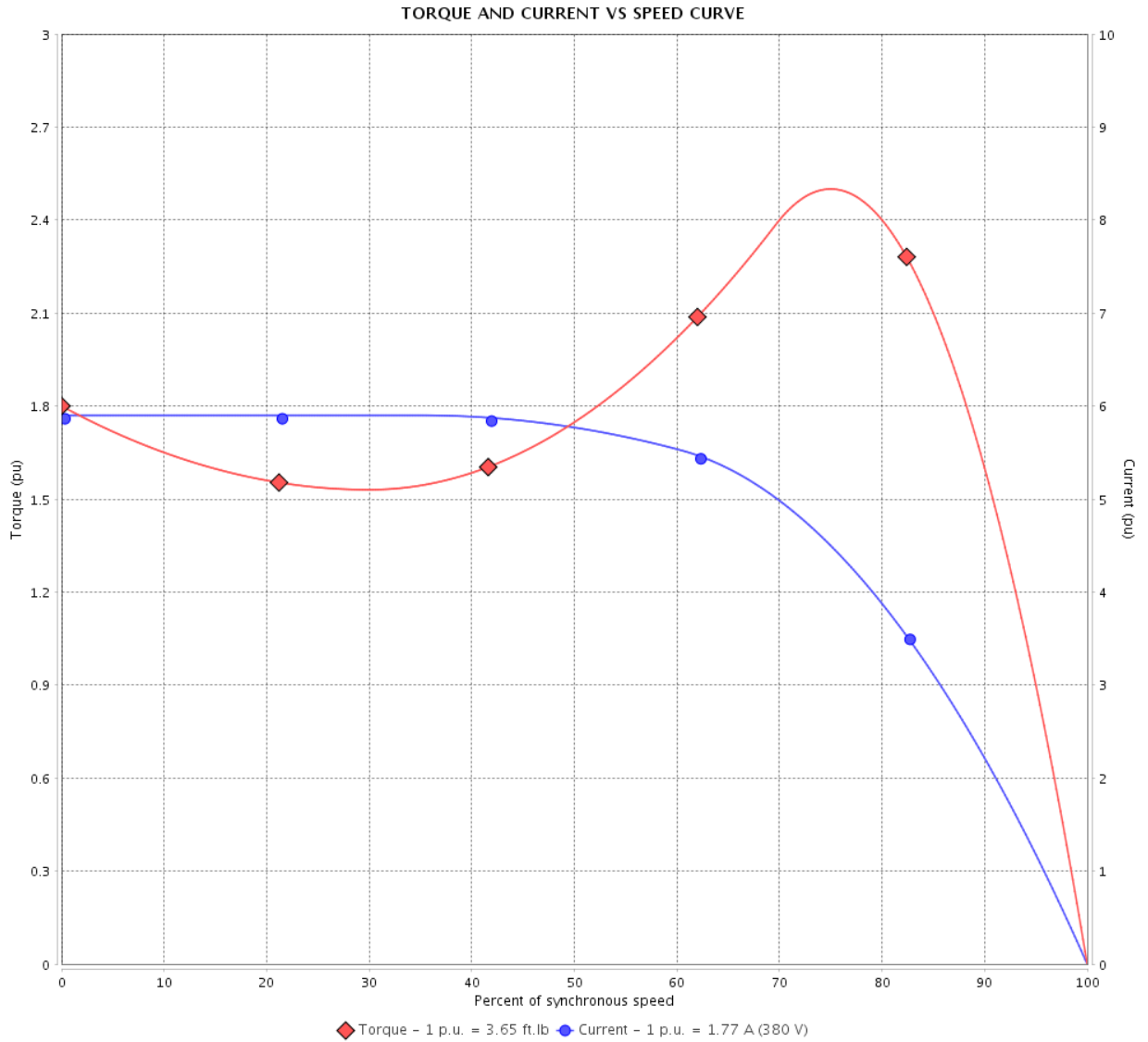
Three Phase Induction Motor - Squirrel Cage

Customer :

Product line : 00021 Premium Efficiency Three-Phase

Product code : 13230227

Catalog # : 00118OT3ERB56-S



Performance : 190/380 V 50 Hz 4P

Rated current : 3.54/1.77 A
 LRC : 5.9
 Rated torque : 3.65 ft.lb
 Locked rotor torque : 180 %
 Breakdown torque : 250 %
 Rated speed : 1440 rpm

Moment of inertia (J) : 0.0842 sq.ft.lb
 Duty cycle : Cont.(S1)
 Insulation class : F
 Service factor : 1.15
 Temperature rise : 80 K
 Design : A

Locked rotor time : 32s (cold) 18s (hot)

Rev.	Changes Summary	Performed	Checked	Date
Performed by			Page 3 / 16	Revision
Checked by				
Date	11/04/2022			

TORQUE AND CURRENT VS SPEED CURVE

Three Phase Induction Motor - Squirrel Cage



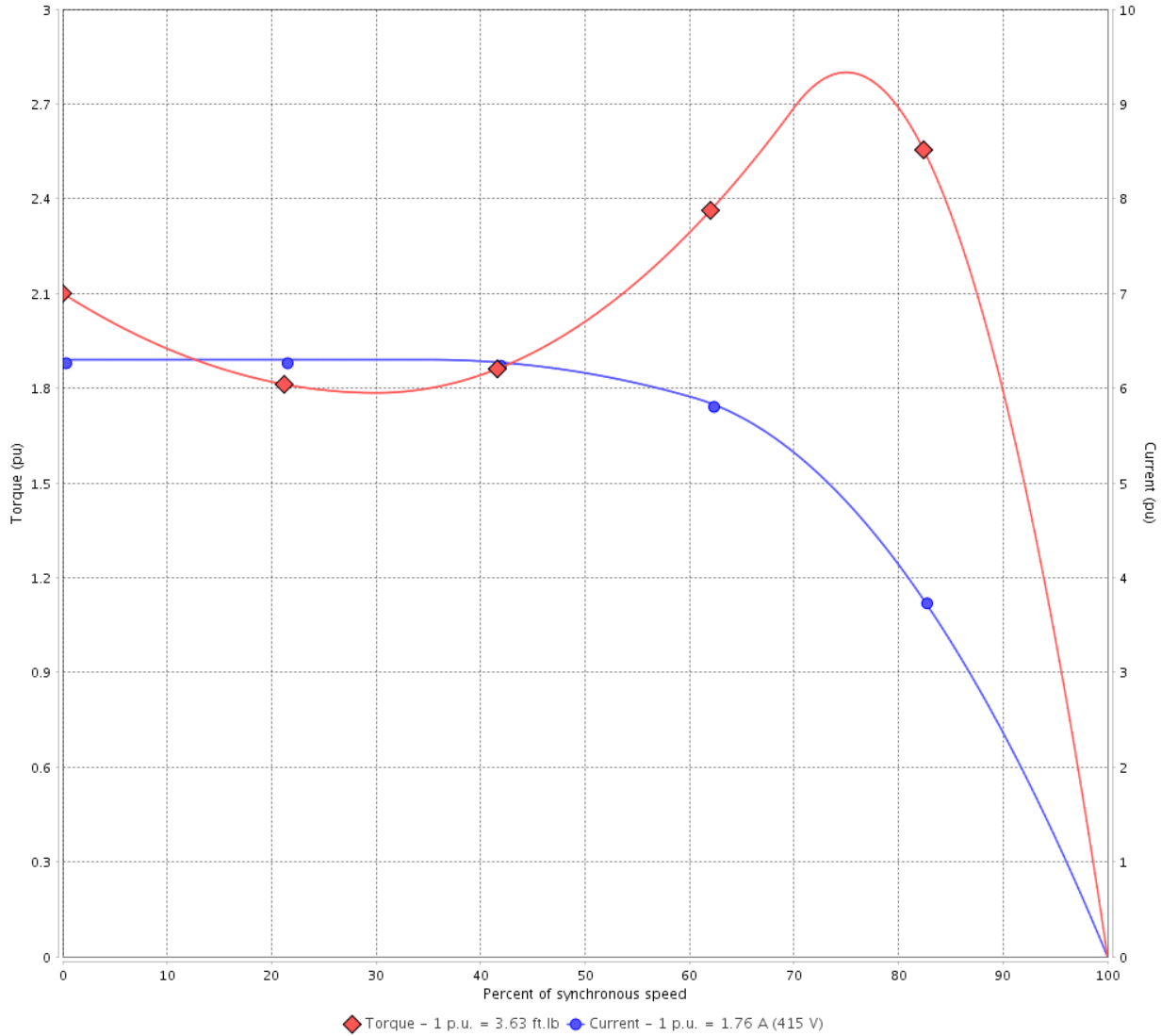
Customer :

Product line : 00021 Premium Efficiency Three-Phase

Product code : 13230227

Catalog # : 00118OT3ERB56-S

TORQUE AND CURRENT VS SPEED CURVE



Performance : 220/415 V 50 Hz 4P

Rated current : 3.32/1.76 A
 LRC : 6.3
 Rated torque : 3.63 ft.lb
 Locked rotor torque : 210 %
 Breakdown torque : 280 %
 Rated speed : 1445 rpm

Moment of inertia (J) : 0.0842 sq.ft.lb
 Duty cycle : Cont.(S1)
 Insulation class : F
 Service factor : 1.15
 Temperature rise : 80 K
 Design : A

Locked rotor time : 30s (cold) 17s (hot)

Rev.	Changes Summary	Performed	Checked	Date
Performed by			Page 4 / 16	Revision
Checked by				
Date	11/04/2022			

LOAD PERFORMANCE CURVE

Three Phase Induction Motor - Squirrel Cage

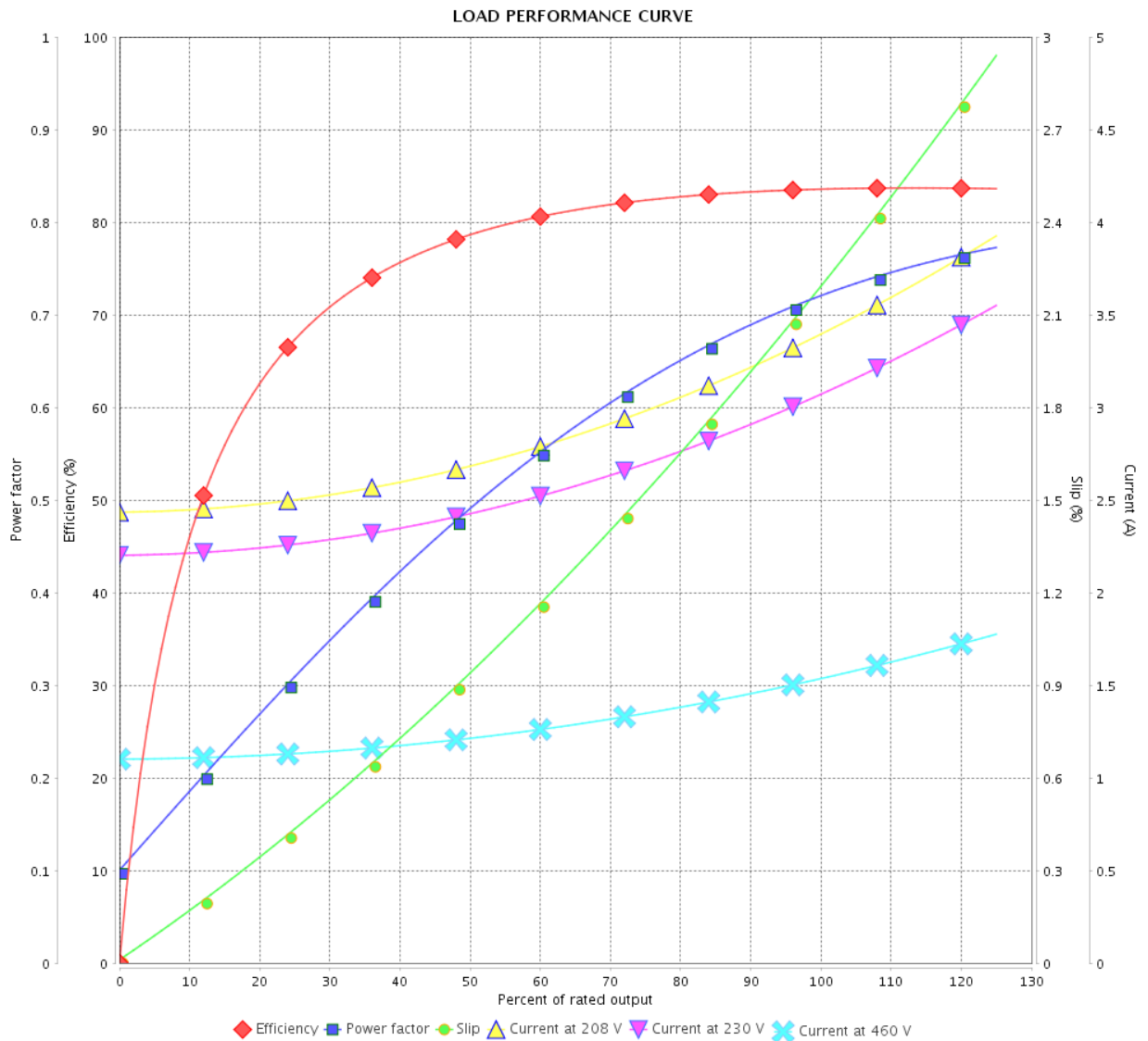


Customer :

Product line : 00021 Premium Efficiency Three-Phase

Product code : 13230227

Catalog # : 00118OT3ERB56-S



Performance : 230/460 V 60 Hz 4P

Rated current : 3.14/1.57 A
 LRC : 7.6
 Rated torque : 2.98 ft.lb
 Locked rotor torque : 280 %
 Breakdown torque : 320 %
 Rated speed : 1760 rpm

Moment of inertia (J) : 0.0842 sq.ft.lb
 Duty cycle : Cont.(S1)
 Insulation class : F
 Service factor :
 Temperature rise : 80 K
 Design : A

Rev.	Changes Summary	Performed	Checked	Date
Performed by			Page	Revision
Checked by			5 / 16	
Date	11/04/2022			

LOAD PERFORMANCE CURVE

Three Phase Induction Motor - Squirrel Cage



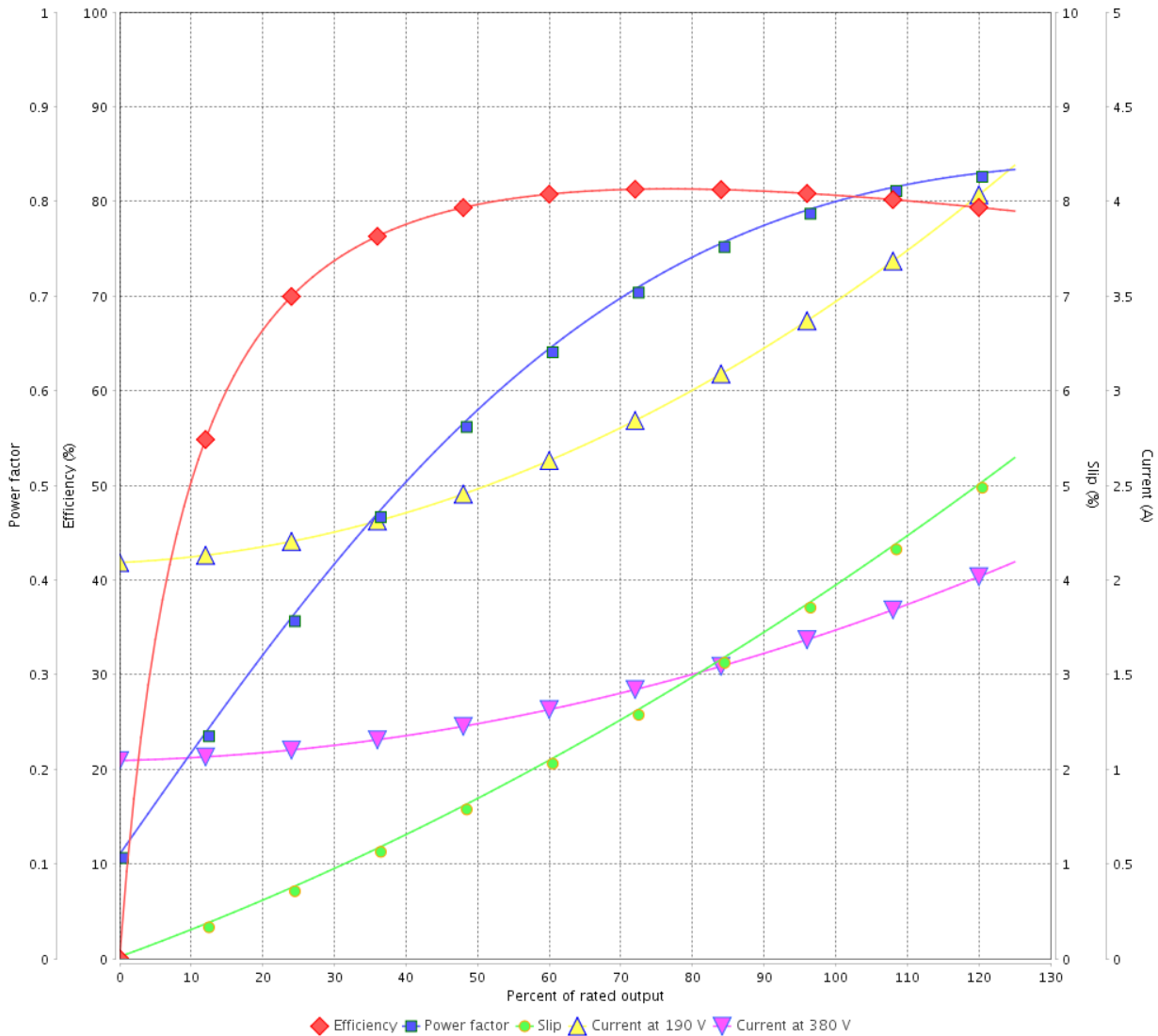
Customer :

Product line : 00021 Premium Efficiency Three-Phase

Product code : 13230227

Catalog # : 00118OT3ERB56-S

LOAD PERFORMANCE CURVE



Performance : 190/380 V 50 Hz 4P

Rated current : 3.54/1.77 A
 LRC : 5.9
 Rated torque : 3.65 ft.lb
 Locked rotor torque : 180 %
 Breakdown torque : 250 %
 Rated speed : 1440 rpm

Moment of inertia (J) : 0.0842 sq.ft.lb
 Duty cycle : Cont.(S1)
 Insulation class : F
 Service factor : 1.15
 Temperature rise : 80 K
 Design : A

Rev.	Changes Summary	Performed	Checked	Date
Performed by			Page	Revision
Checked by			6 / 16	
Date	11/04/2022			

LOAD PERFORMANCE CURVE

Three Phase Induction Motor - Squirrel Cage

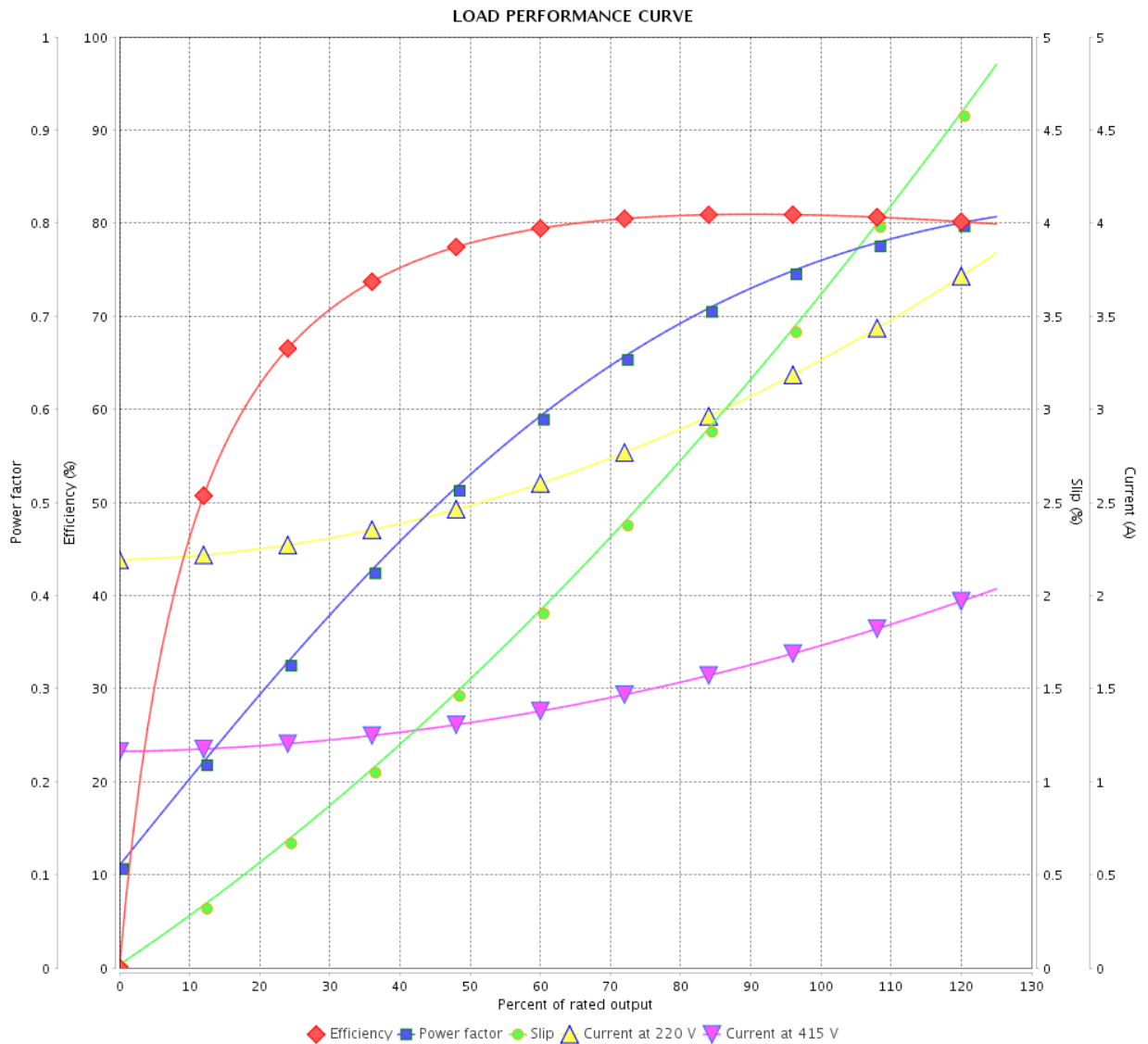


Customer :

Product line : 00021 Premium Efficiency Three-Phase

Product code : 13230227

Catalog # : 00118OT3ERB56-S



Performance : 220/415 V 50 Hz 4P

Rated current : 3.32/1.76 A
 LRC : 6.3
 Rated torque : 3.63 ft.lb
 Locked rotor torque : 210 %
 Breakdown torque : 280 %
 Rated speed : 1445 rpm

Moment of inertia (J) : 0.0842 sq.ft.lb
 Duty cycle : Cont.(S1)
 Insulation class : F
 Service factor : 1.15
 Temperature rise : 80 K
 Design : A

Rev.	Changes Summary	Performed	Checked	Date
Performed by		Page		Revision
Checked by		7 / 16		
Date		11/04/2022		

THERMAL LIMIT CURVE



Three Phase Induction Motor - Squirrel Cage

Customer :

Product line : 00021 Premium Efficiency Three-Phase
Product code : 13230227
Catalog # : 00118OT3ERB56-S

Performance : 230/460 V 60 Hz 4P

Rated current	: 3.14/1.57 A	Moment of inertia (J)	: 0.0842 sq.ft.lb
LRC	: 7.6	Duty cycle	: Cont.(S1)
Rated torque	: 2.98 ft.lb	Insulation class	: F
Locked rotor torque	: 280 %	Service factor	:
Breakdown torque	: 320 %	Temperature rise	: 80 K
Rated speed	: 1760 rpm	Design	: A

Heating constant

Cooling constant

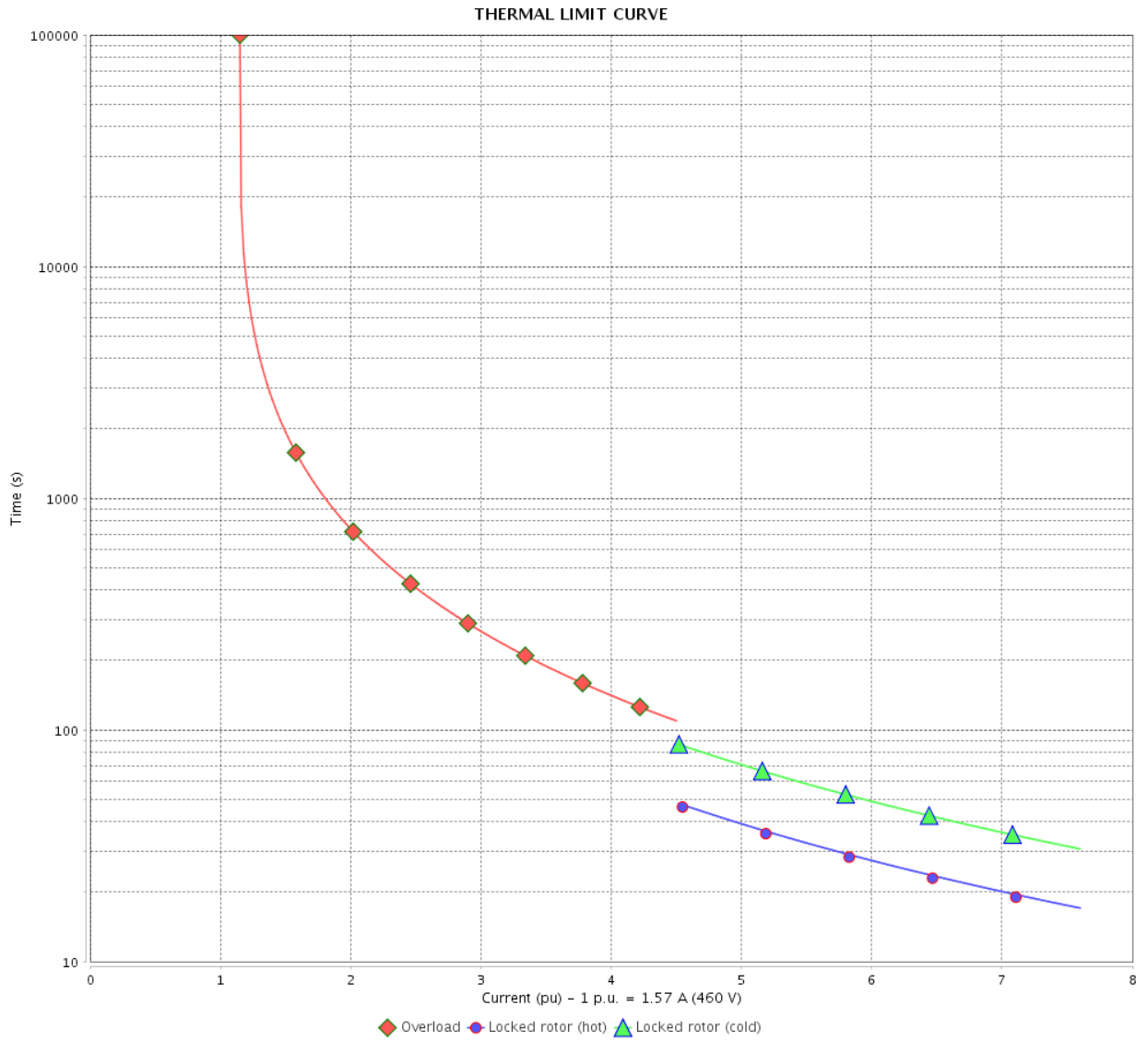
Rev.	Changes Summary	Performed	Checked	Date
Performed by				
Checked by			Page	Revision
Date	11/04/2022		8 / 16	

THERMAL LIMIT CURVE

Three Phase Induction Motor - Squirrel Cage



Customer : _____



Rev.	Changes Summary	Performed	Checked	Date
Performed by		Page		Revision
Checked by		9 / 16		
Date		11/04/2022		

THERMAL LIMIT CURVE



Three Phase Induction Motor - Squirrel Cage

Customer :

Product line : 00021 Premium Efficiency Three-Phase
Product code : 13230227
Catalog # : 00118OT3ERB56-S

Performance : 190/380 V 50 Hz 4P

Rated current	: 3.54/1.77 A	Moment of inertia (J)	: 0.0842 sq.ft.lb
LRC	: 5.9	Duty cycle	: Cont.(S1)
Rated torque	: 3.65 ft.lb	Insulation class	: F
Locked rotor torque	: 180 %	Service factor	: 1.15
Breakdown torque	: 250 %	Temperature rise	: 80 K
Rated speed	: 1440 rpm	Design	: A

Heating constant

Cooling constant

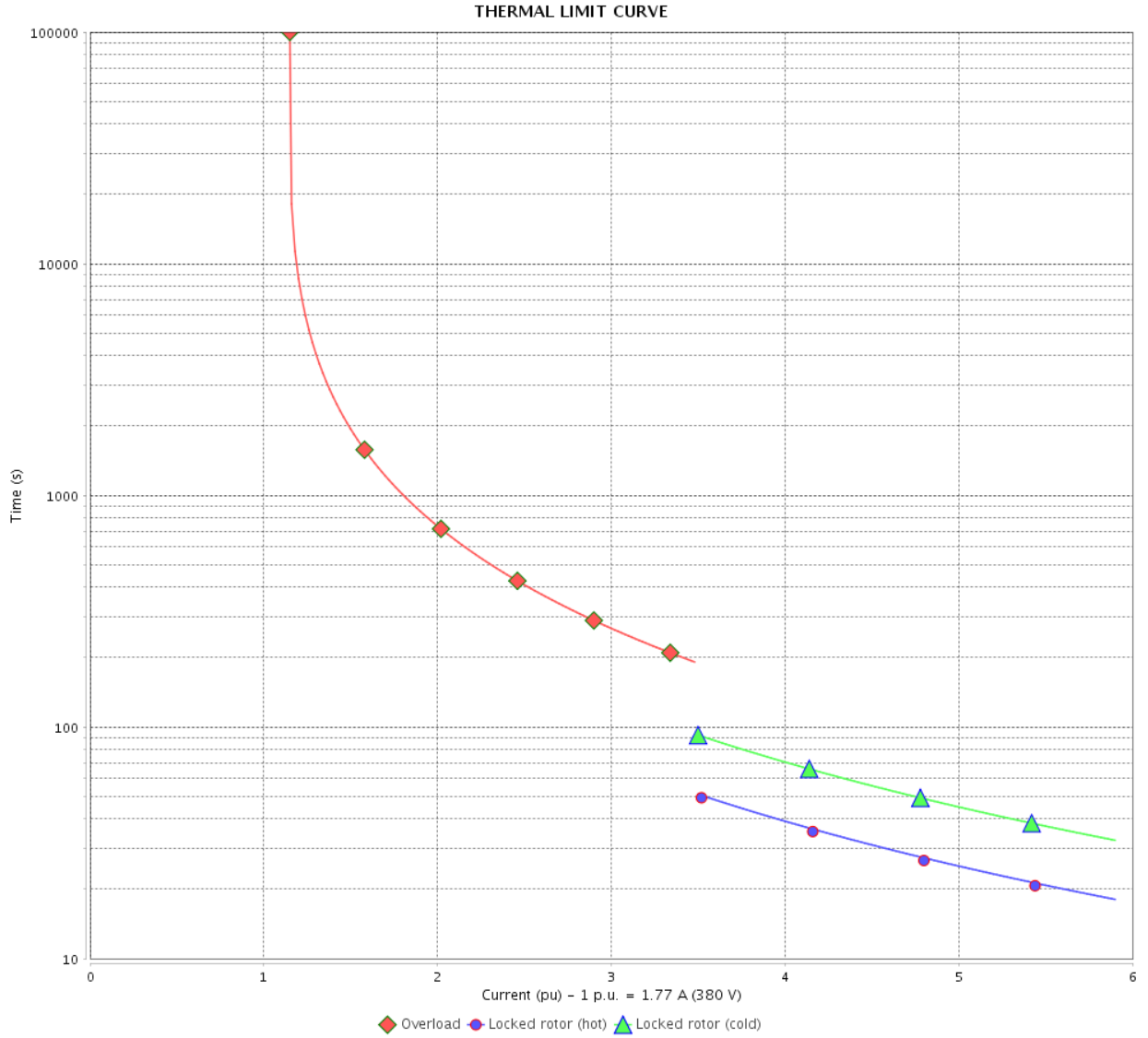
Rev.	Changes Summary	Performed	Checked	Date
Performed by				
Checked by			Page	Revision
Date	11/04/2022		10 / 16	

THERMAL LIMIT CURVE

Three Phase Induction Motor - Squirrel Cage



Customer : _____



Rev.	Changes Summary	Performed	Checked	Date
Performed by		Page		Revision
Checked by		11 / 16		
Date		11/04/2022		

THERMAL LIMIT CURVE



Three Phase Induction Motor - Squirrel Cage

Customer :

Product line : 00021 Premium Efficiency Three-Phase
 Product code : 13230227
 Catalog # : 00118OT3ERB56-S

Performance : 220/415 V 50 Hz 4P

Rated current : 3.32/1.76 A	Moment of inertia (J) : 0.0842 sq.ft.lb
LRC : 6.3	Duty cycle : Cont.(S1)
Rated torque : 3.63 ft.lb	Insulation class : F
Locked rotor torque : 210 %	Service factor : 1.15
Breakdown torque : 280 %	Temperature rise : 80 K
Rated speed : 1445 rpm	Design : A

Heating constant

Cooling constant

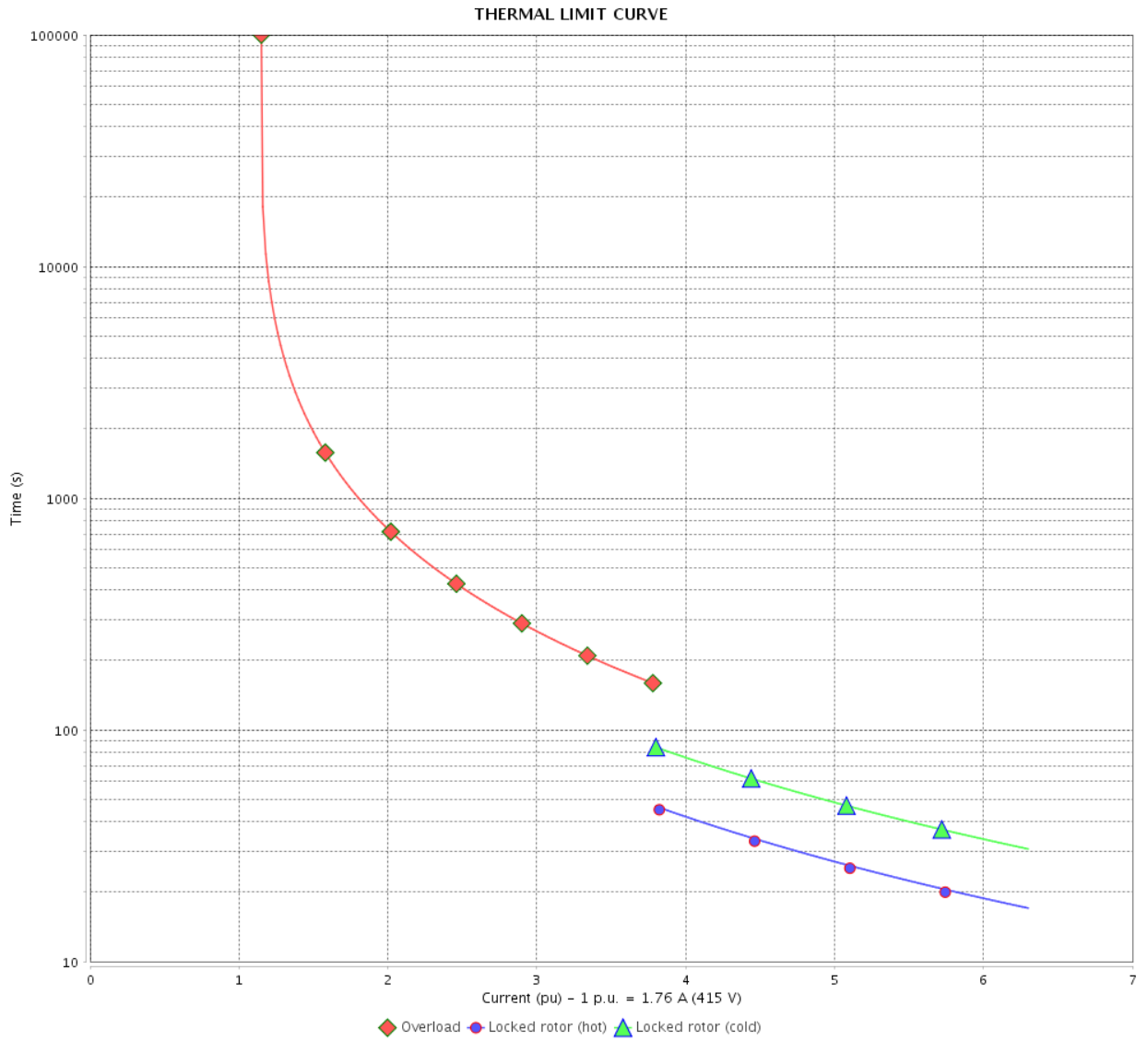
Rev.	Changes Summary	Performed	Checked	Date
Performed by			Page 12 / 16	Revision
Checked by				
Date	11/04/2022			

THERMAL LIMIT CURVE

Three Phase Induction Motor - Squirrel Cage



Customer : _____



Rev.	Changes Summary	Performed	Checked	Date
Performed by		Page 13 / 16		Revision
Checked by				
Date				

VFD OPERATION CURVE

Three Phase Induction Motor - Squirrel Cage

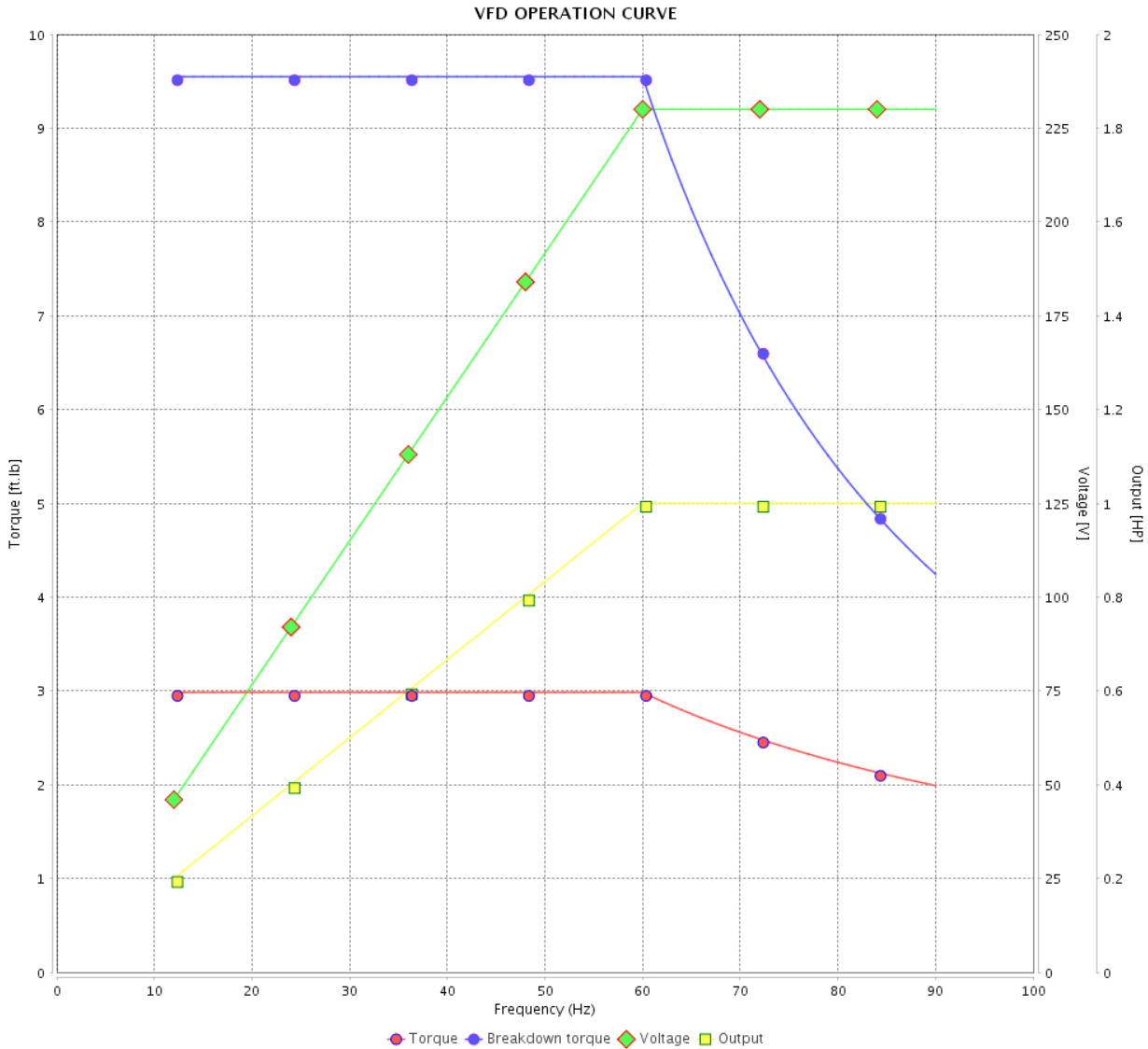


Customer :

Product line : 00021 Premium Efficiency Three-Phase

Product code : 13230227

Catalog # : 00118OT3ERB56-S



Performance : 230/460 V 60 Hz 4P

Rated current : 3.14/1.57 A
 LRC : 7.6
 Rated torque : 2.98 ft.lb
 Locked rotor torque : 280 %
 Breakdown torque : 320 %
 Rated speed : 1760 rpm

Moment of inertia (J) : 0.0842 sq.ft.lb
 Duty cycle : Cont.(S1)
 Insulation class : F
 Service factor :
 Temperature rise : 80 K
 Design : A

Rev.	Changes Summary	Performed	Checked	Date
Performed by			Page	Revision
Checked by				
Date				

VFD OPERATION CURVE

Three Phase Induction Motor - Squirrel Cage

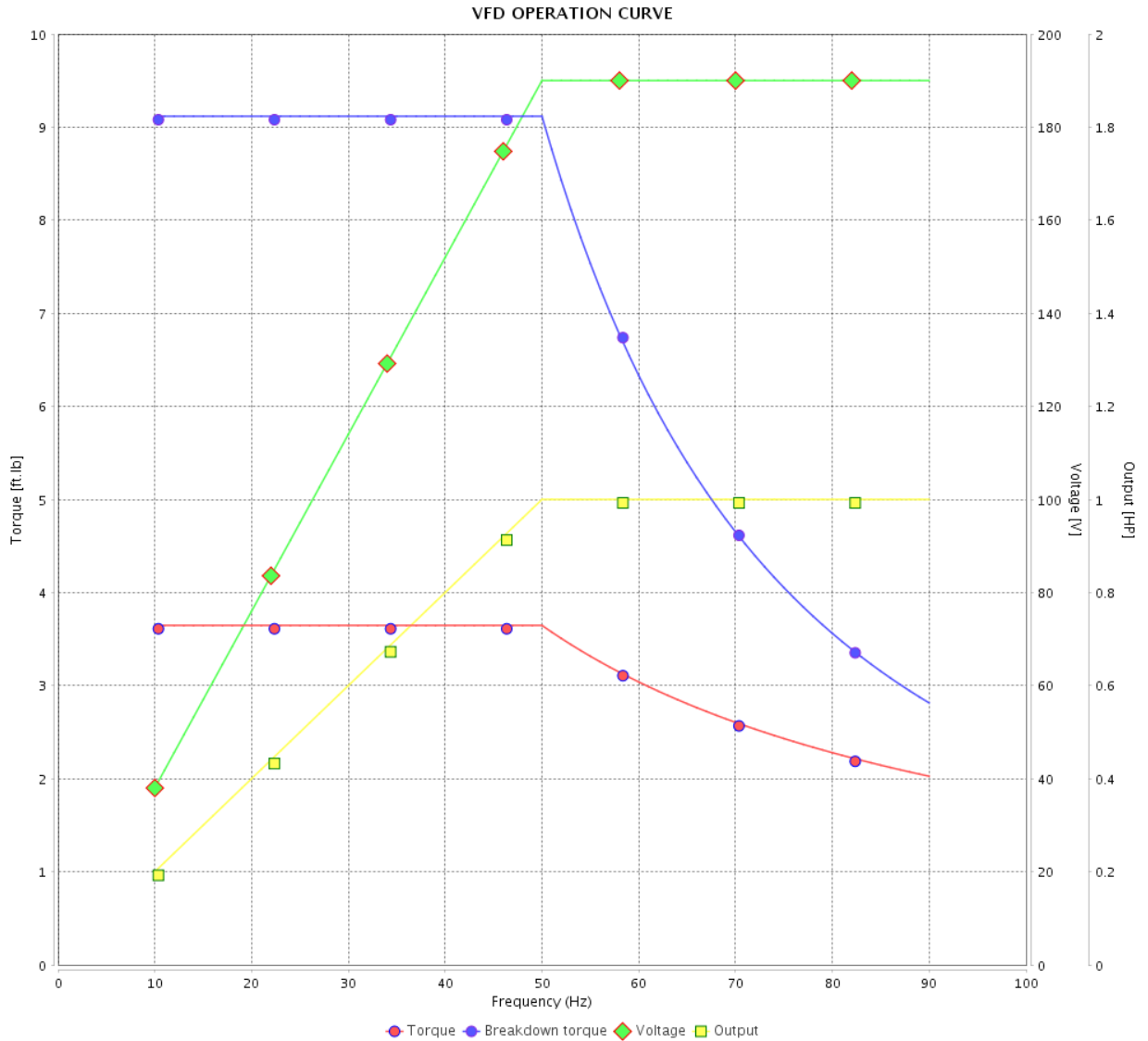


Customer :

Product line : 00021 Premium Efficiency Three-Phase

Product code : 13230227

Catalog # : 00118OT3ERB56-S



Performance : 190/380 V 50 Hz 4P

Rated current : 3.54/1.77 A
 LRC : 5.9
 Rated torque : 3.65 ft.lb
 Locked rotor torque : 180 %
 Breakdown torque : 250 %
 Rated speed : 1440 rpm

Moment of inertia (J) : 0.0842 sq.ft.lb
 Duty cycle : Cont.(S1)
 Insulation class : F
 Service factor : 1.15
 Temperature rise : 80 K
 Design : A

Rev.	Changes Summary	Performed	Checked	Date
Performed by		Page		Revision
Checked by		15 / 16		
Date		11/04/2022		

VFD OPERATION CURVE

Three Phase Induction Motor - Squirrel Cage



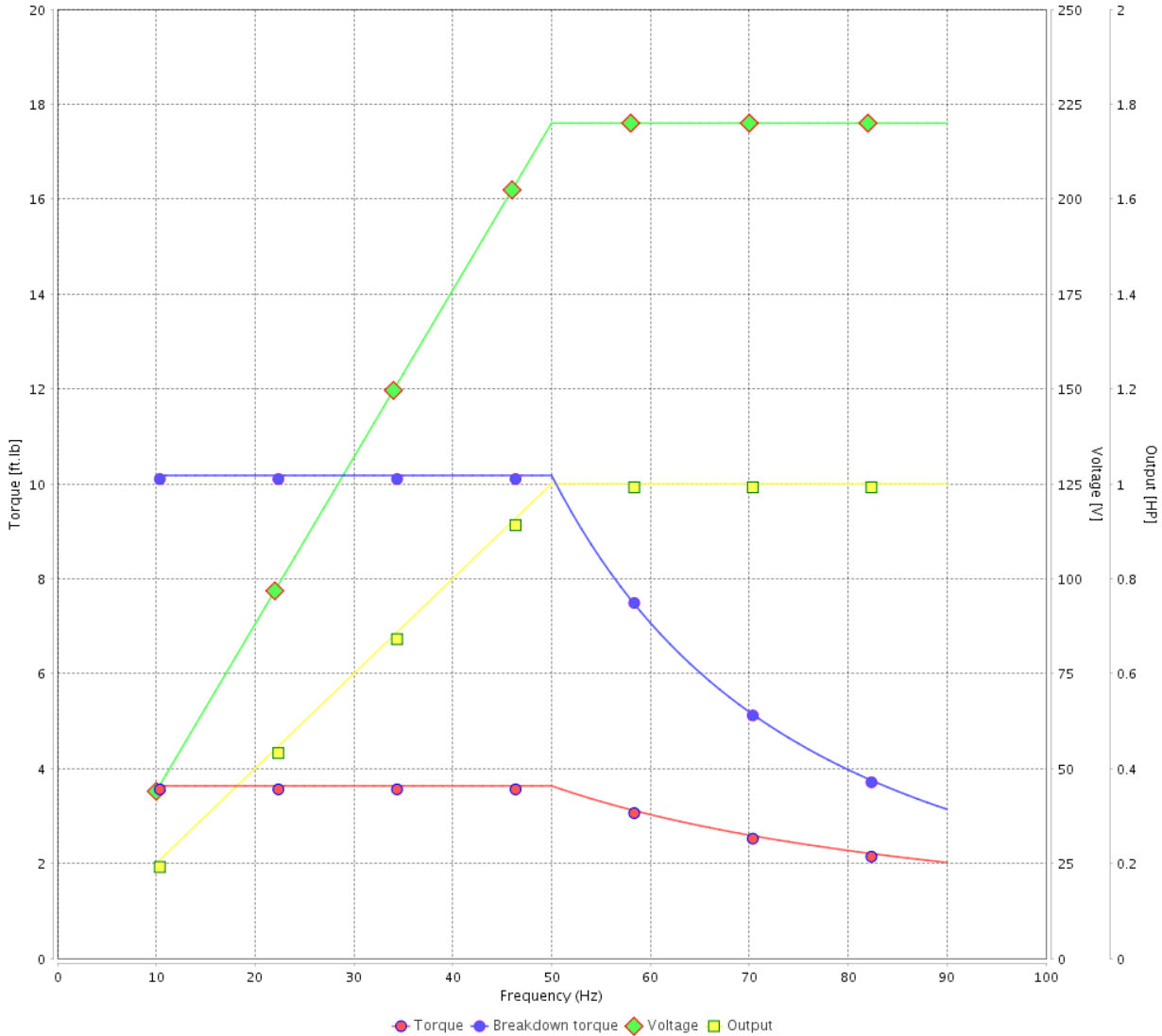
Customer :

Product line : 00021 Premium Efficiency Three-Phase

Product code : 13230227

Catalog # : 00118OT3ERB56-S

VFD OPERATION CURVE



Performance : 220/415 V 50 Hz 4P

Rated current : 3.32/1.76 A
 LRC : 6.3
 Rated torque : 3.63 ft.lb
 Locked rotor torque : 210 %
 Breakdown torque : 280 %
 Rated speed : 1445 rpm

Moment of inertia (J) : 0.0842 sq.ft.lb
 Duty cycle : Cont.(S1)
 Insulation class : F
 Service factor : 1.15
 Temperature rise : 80 K
 Design : A

Rev.	Changes Summary	Performed	Checked	Date
Performed by			Page	Revision
Checked by				
Date				

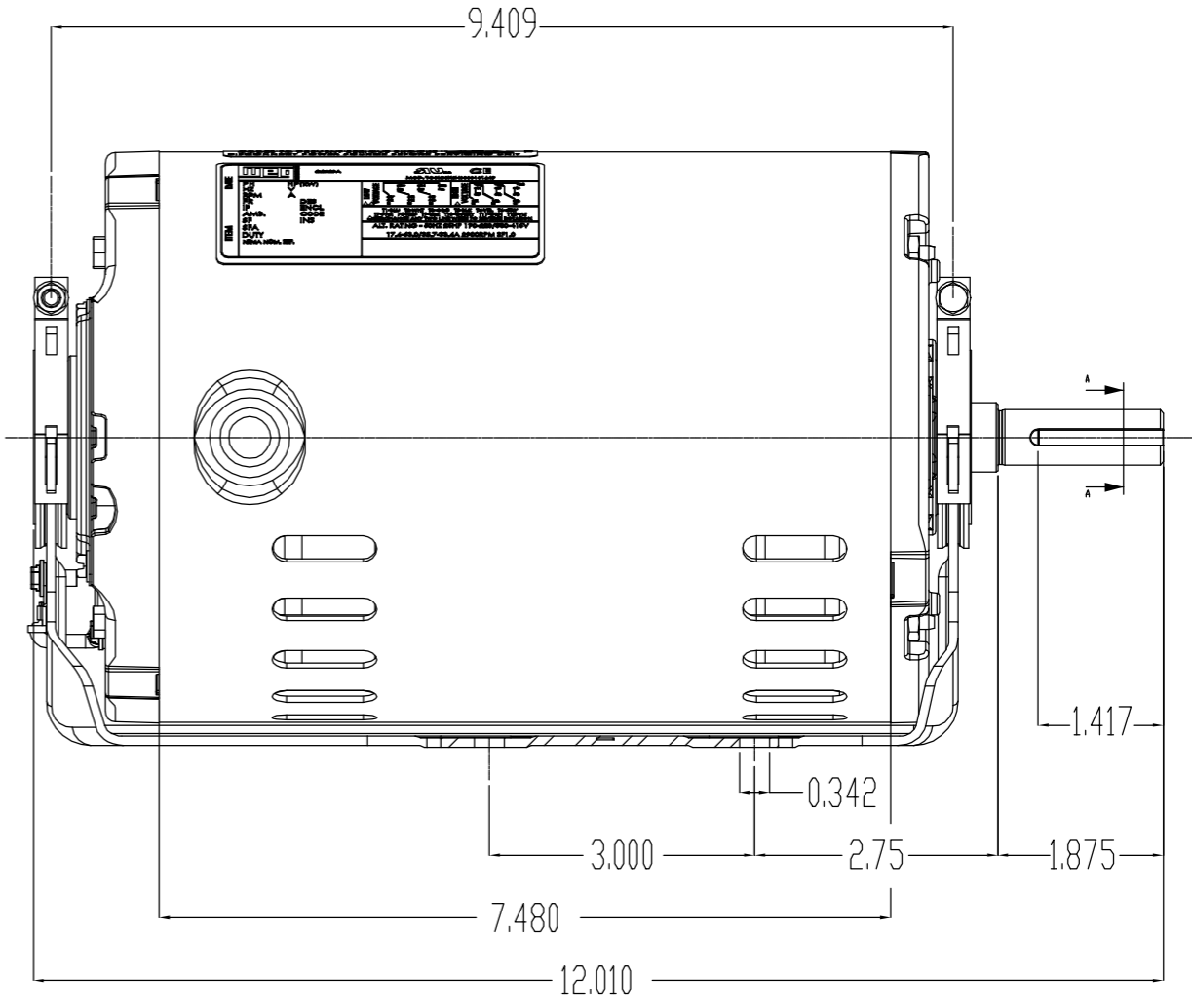
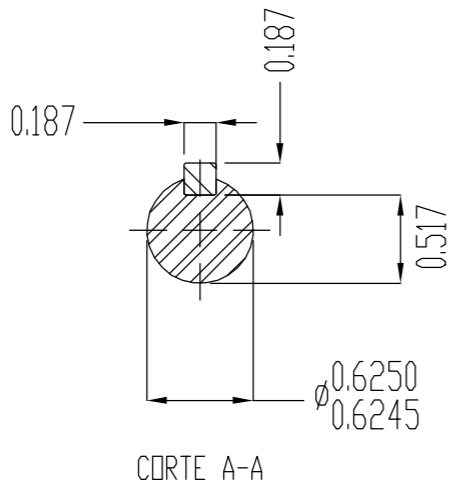
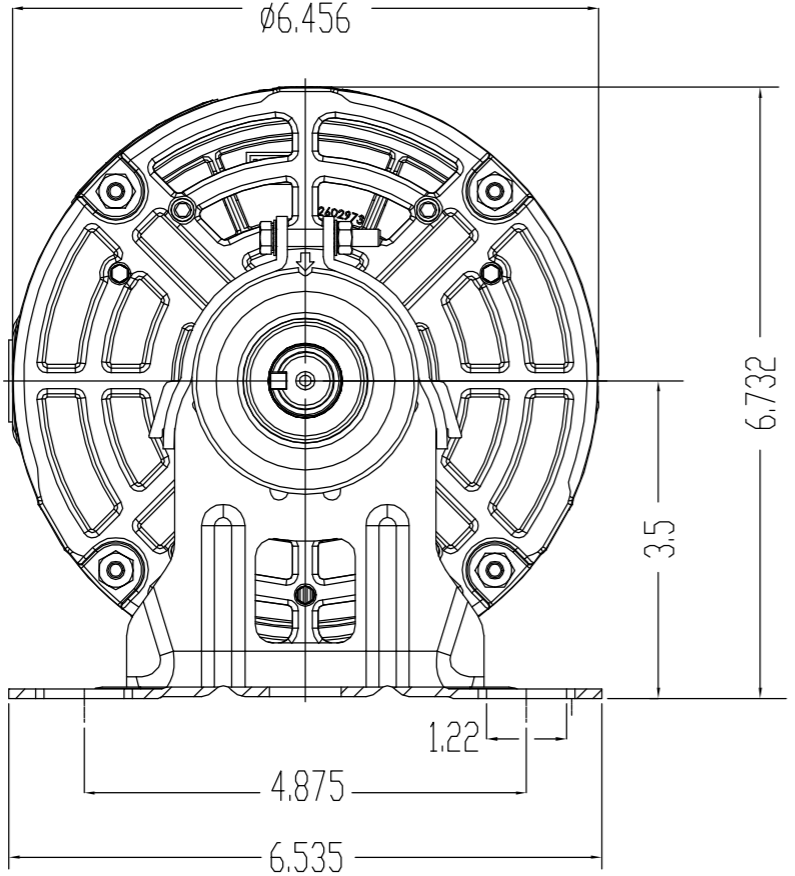
EJE/SHAFT	
ESTÁNDAR/STANDARD	X
OPCIONAL/OPTIONAL	
ESPECIAL/SPECIAL	

Dimensões em polegada
Dimensions in inches

PRELIMINARY DOCUMENT
Not to be used for installation purposes.

THIS IS AN UPDATED REVISION, THE PREVIOUS ONE MUST BE DISREGARDED.

A
B
C
D
E



Torque de aperto a 1 N.m. nos Parafusos das Abacadeiras / Tighten torque 1 N.m. for clamp bolts						
Forma constructiva B3D / Mounting - B3D						
500001151780		CAMBIO DE DESCRIPCION EN SAP	YSALAS		CTOLEDO	11.03.2016
500001148207		EMISION INICIAL	YSALAS		CTOLEDO	01.03.2016 00
ECM	LOC	SUMMARY OF MODIFICATIONS	EXECUTED	CHECKED	RELEASED	DATE VER
EXECUTED	YSALAS	THREE PHASE ODP ROLLED STEEL				
CHECKED		56				
RELEASED	CTOLEDO					
REL DT	01.03.2016	WMX	HUEHUETOCA	PRODUCT ENGINEERING	SHEET	01 / 01

1 HP 04 Poles 60Hz Transfer 10083462 to RS

A

10004110395
000 | 01
WEG

UNCONTROLLED COPY
RELEASED
ZME A3

WEG
NEMA
Premium

MADE IN MEXICO

MAT: 13230227

W01.T00IC0X0X

MODEL 001180T3ERB56-S
19SET2019

PH 3	FR	56	HP(KW)	1.0(0.75)	Hz	60
V	230/460		RPM	1760		
A	3.14/1.57		DUTY CONT.			

SFA	3.61/1.81		CODE	L	DES	A
SF 1.15	INS	CL F AT 80K	AMB	40°C	ENCL	ODP
PF 0.72		AVG. F.L. EFF.	83.5%			

ALT 1000 m.a.s.l. USABLE @ 208V 3.47A SF1.00

ALTERNATE RATING: 1.0HP 50Hz 190-220/380-415V SF1.15
3.54-3.34/1.77-1.77A 1440RPM EFF 80.6% (IE2) IEC 60034-1

INTERCHANGE ANY TWO LINE WIRES TO REVERSE THE ROTATION

Inverter duty motor For 60Hz use on VPWM 1000:1 VT, 5:1 CT

DE: 6204-ZZ ODE: 6202-ZZ MOBIL POLYREX EM

WARNING: Motor must be grounded in accordance with local and national electrical codes to prevent serious electrical shocks. Disconnect power source before servicing unit.

AVERTISSEMENT: Le moteur doit être mis à la terre conformément aux codes électriques locaux et nationaux afin d'éviter tout choc électrique grave. Déconnectez l'alimentation avant l'entretien de la machine.

