

DATA SHEET



Three Phase Induction Motor - Squirrel Cage

Customer :																			
Product line : Premium Efficiency Three-Phase	Product code : 12809661 Catalog # : 00118OT3H56CFL-S																		
Frame : 56C Output : 1 HP (0.75 kW) Poles : 4 Frequency : 60 Hz Rated voltage : 575 V Rated current : 1.26 A L. R. Amperes : 9.55 A LRC : 7.6x(Code L) No load current : 0.880 A Rated speed : 1760 rpm Slip : 2.22 % Rated torque : 2.98 ft.lb Locked rotor torque : 280 % Breakdown torque : 320 % Insulation class : F Service factor : 1.15 Moment of inertia (J) : 0.0842 sq.ft.lb Design : A	Locked rotor time : 30s (cold) 17s (hot) Temperature rise : 80 K Duty cycle : Cont.(S1) Ambient temperature : -20°C to +40°C Altitude : 1000 m.a.s.l. Cooling method : IC01 - ODP Mounting : F-1 Rotation ¹ : Both (CW and CCW) Noise level ² : 52.0 dB(A) Starting method : Direct On Line Approx. weight ³ : 26.2 lb																		
<table border="1" style="width:100%; border-collapse: collapse;"> <tr> <td>Output</td> <td>25%</td> <td>50%</td> <td>75%</td> <td>100%</td> </tr> <tr> <td>Efficiency (%)</td> <td>77.3</td> <td>78.5</td> <td>82.5</td> <td>83.5</td> </tr> <tr> <td>Power Factor</td> <td>0.27</td> <td>0.49</td> <td>0.63</td> <td>0.72</td> </tr> </table>	Output	25%	50%	75%	100%	Efficiency (%)	77.3	78.5	82.5	83.5	Power Factor	0.27	0.49	0.63	0.72	Foundation loads Max. traction : 80 lb Max. compression : 107 lb			
Output	25%	50%	75%	100%															
Efficiency (%)	77.3	78.5	82.5	83.5															
Power Factor	0.27	0.49	0.63	0.72															
<table style="width:100%; border-collapse: collapse;"> <tr> <td></td> <td style="text-align: center;"><u>Drive end</u></td> <td style="text-align: center;"><u>Non drive end</u></td> </tr> <tr> <td>Bearing type :</td> <td style="text-align: center;">6204 ZZ</td> <td style="text-align: center;">6202 ZZ</td> </tr> <tr> <td>Sealing :</td> <td style="text-align: center;">Without Bearing Seal</td> <td style="text-align: center;">Without Bearing Seal</td> </tr> <tr> <td>Lubrication interval :</td> <td style="text-align: center;">-</td> <td style="text-align: center;">-</td> </tr> <tr> <td>Lubricant amount :</td> <td style="text-align: center;">-</td> <td style="text-align: center;">-</td> </tr> <tr> <td>Lubricant type :</td> <td colspan="2" style="text-align: center;">Mobil Polyrex EM</td> </tr> </table>			<u>Drive end</u>	<u>Non drive end</u>	Bearing type :	6204 ZZ	6202 ZZ	Sealing :	Without Bearing Seal	Without Bearing Seal	Lubrication interval :	-	-	Lubricant amount :	-	-	Lubricant type :	Mobil Polyrex EM	
	<u>Drive end</u>	<u>Non drive end</u>																	
Bearing type :	6204 ZZ	6202 ZZ																	
Sealing :	Without Bearing Seal	Without Bearing Seal																	
Lubrication interval :	-	-																	
Lubricant amount :	-	-																	
Lubricant type :	Mobil Polyrex EM																		
Notes																			
This revision replaces and cancel the previous one, which must be eliminated. (1) Looking the motor from the shaft end. (2) Measured at 1m and with tolerance of +3dB(A). (3) Approximate weight subject to changes after manufacturing process. (4) At 100% of full load.																			
These are average values based on tests with sinusoidal power supply, subject to the tolerances stipulated in NEMA MG-1.																			
Rev.	Changes Summary	Performed	Checked	Date															
Performed by																			
Checked by			Page	Revision															
Date	11/04/2022		1 / 5																

TORQUE AND CURRENT VS SPEED CURVE

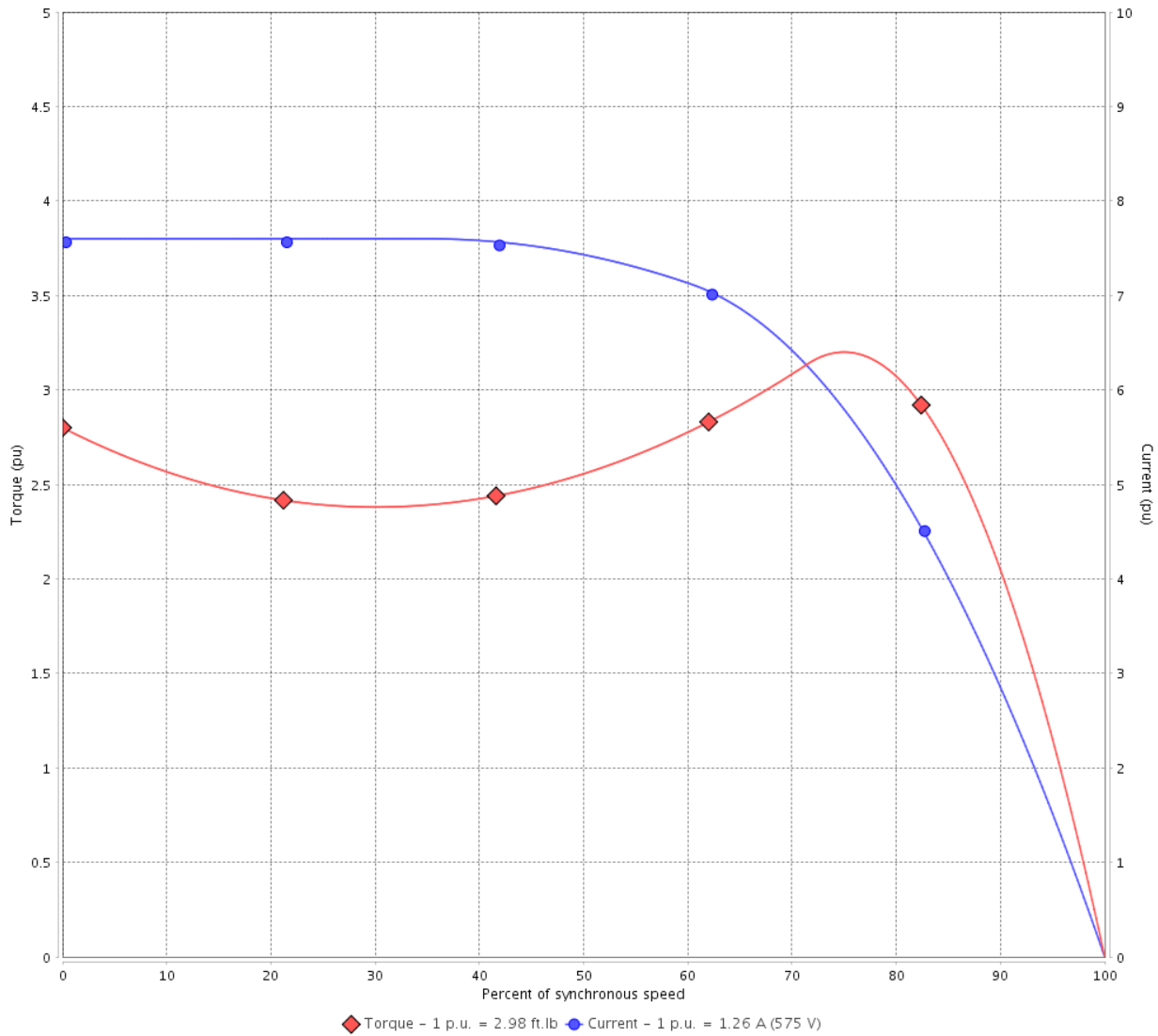
Three Phase Induction Motor - Squirrel Cage



Customer :

Product line : Premium Efficiency Three-Phase Product code : 12809661
 Catalog # : 00118OT3H56CFL-S

TORQUE AND CURRENT VS SPEED CURVE



Performance : 575 V 60 Hz 4P

Rated current	: 1.26 A	Moment of inertia (J)	: 0.0842 sq.ft.lb
LRC	: 7.6	Duty cycle	: Cont.(S1)
Rated torque	: 2.98 ft.lb	Insulation class	: F
Locked rotor torque	: 280 %	Service factor	: 1.15
Breakdown torque	: 320 %	Temperature rise	: 80 K
Rated speed	: 1760 rpm	Design	: A

Locked rotor time : 30s (cold) 17s (hot)

Rev.	Changes Summary	Performed	Checked	Date
Performed by			Page 2 / 5	Revision
Checked by				
Date	11/04/2022			

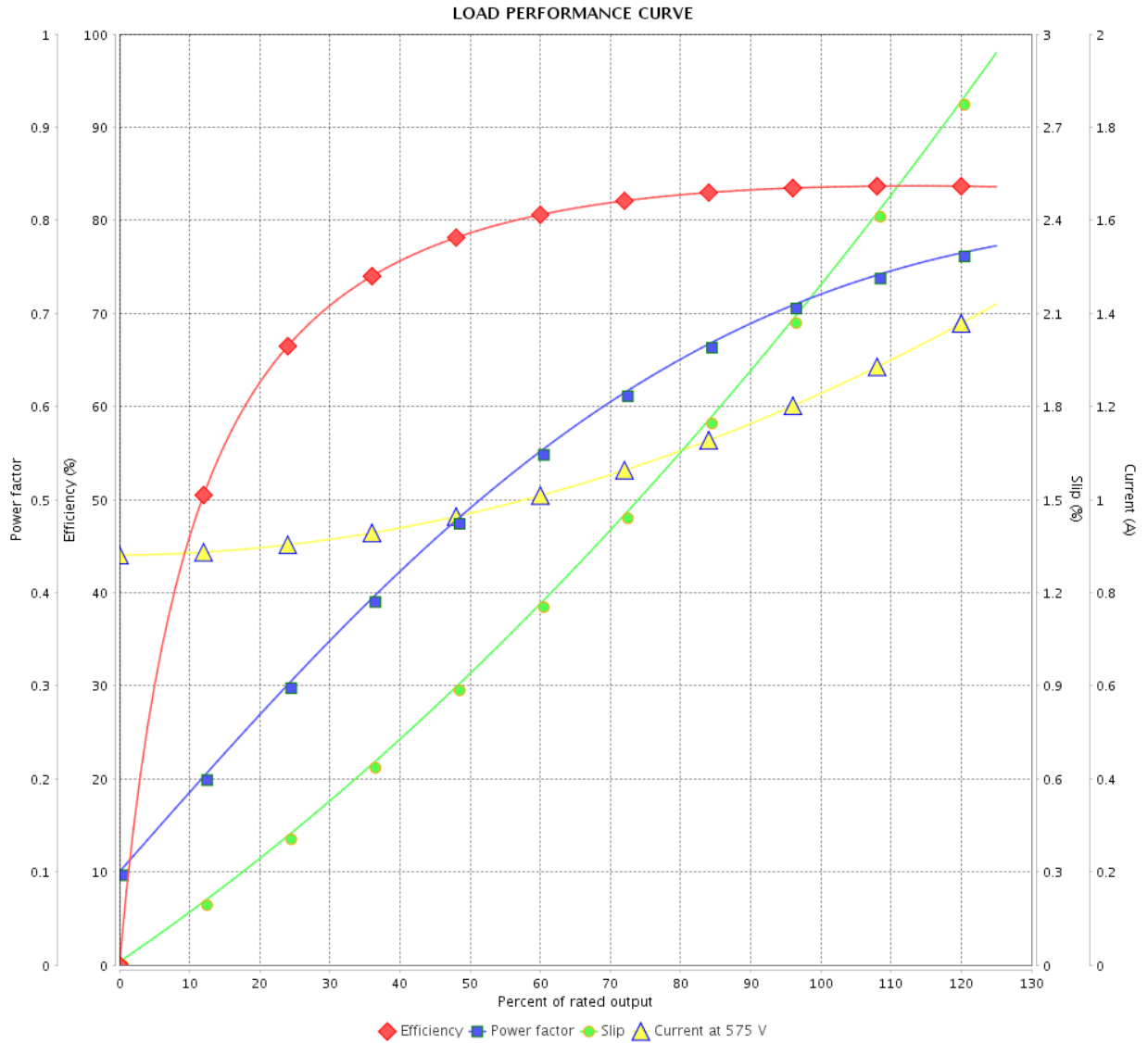
LOAD PERFORMANCE CURVE

Three Phase Induction Motor - Squirrel Cage



Customer : _____

Product line : Premium Efficiency Three-Phase Product code : 12809661
 Catalog # : _____ 00118OT3H56CFL-S



Performance : 575 V 60 Hz 4P

Rated current : 1.26 A	Moment of inertia (J) : 0.0842 sq.ft.lb
LRC : 7.6	Duty cycle : Cont.(S1)
Rated torque : 2.98 ft.lb	Insulation class : F
Locked rotor torque : 280 %	Service factor : 1.15
Breakdown torque : 320 %	Temperature rise : 80 K
Rated speed : 1760 rpm	Design : A

Rev.	Changes Summary	Performed	Checked	Date
Performed by			Page	Revision
Checked by				
Date				

THERMAL LIMIT CURVE

Three Phase Induction Motor - Squirrel Cage



Customer :

Product line : Premium Efficiency Three-Phase

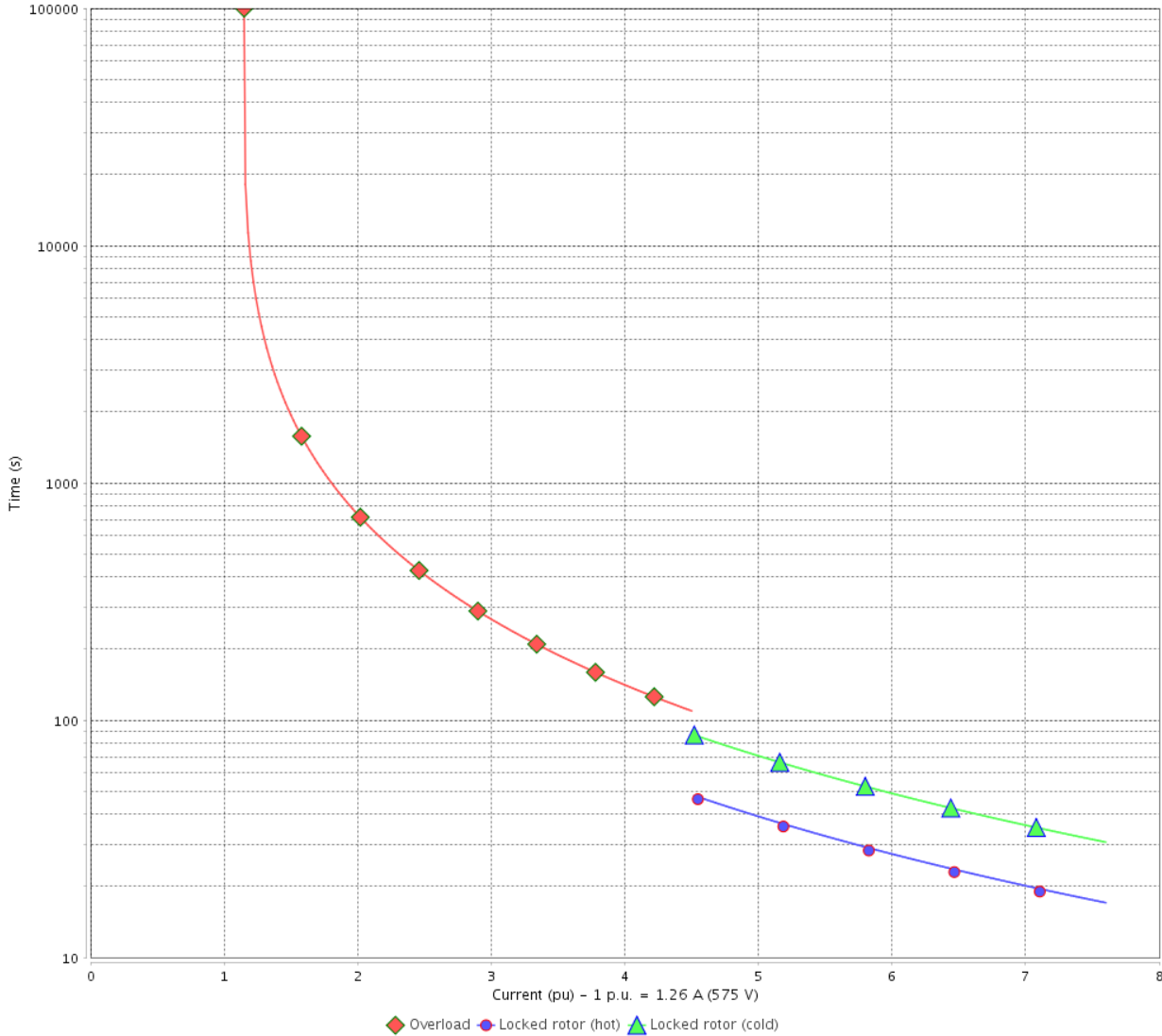
Product code :

12809661

Catalog # :

001180T3H56CFL-S

THERMAL LIMIT CURVE



Performance : 575 V 60 Hz 4P

Rated current : 1.26 A
 LRC : 7.6
 Rated torque : 2.98 ft.lb
 Locked rotor torque : 280 %
 Breakdown torque : 320 %
 Rated speed : 1760 rpm

Moment of inertia (J) : 0.0842 sq.ft.lb
 Duty cycle : Cont.(S1)
 Insulation class : F
 Service factor : 1.15
 Temperature rise : 80 K
 Design : A

Heating constant

Cooling constant

Rev.	Changes Summary	Performed	Checked	Date
Performed by			Page 4 / 5	Revision
Checked by				
Date	11/04/2022			

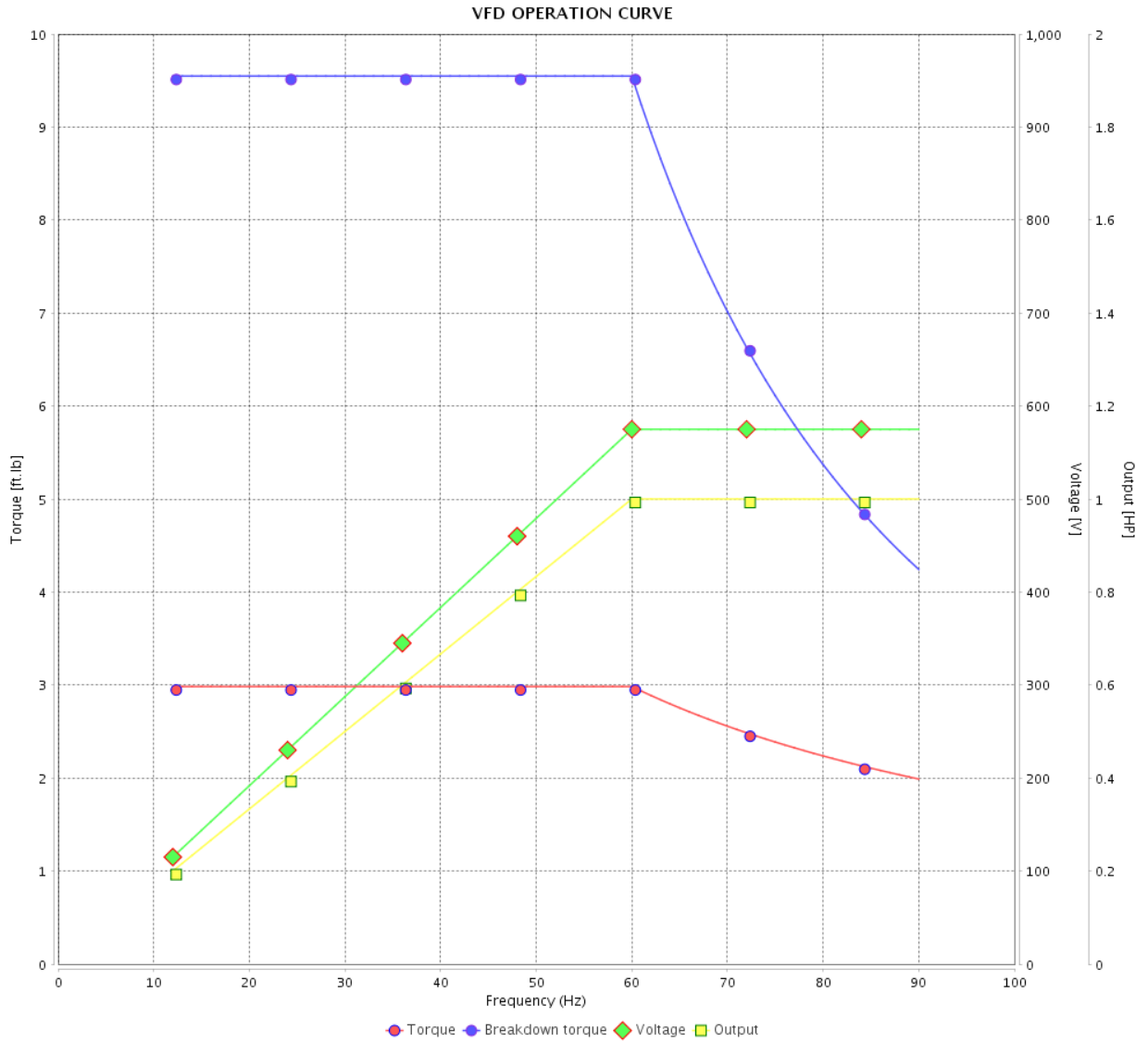
VFD OPERATION CURVE

Three Phase Induction Motor - Squirrel Cage



Customer : _____

Product line : Premium Efficiency Three-Phase Product code : 12809661
 Catalog # : _____ Catalog # : 00118OT3H56CFL-S



Performance : 575 V 60 Hz 4P

Rated current : 1.26 A
 LRC : 7.6
 Rated torque : 2.98 ft.lb
 Locked rotor torque : 280 %
 Breakdown torque : 320 %
 Rated speed : 1760 rpm

Moment of inertia (J) : 0.0842 sq.ft.lb
 Duty cycle : Cont.(S1)
 Insulation class : F
 Service factor : 1.15
 Temperature rise : 80 K
 Design : A

Rev.	Changes Summary	Performed	Checked	Date
Performed by			Page	Revision
Checked by				
Date	11/04/2022	5 / 5		

1 2 3 4 5 6

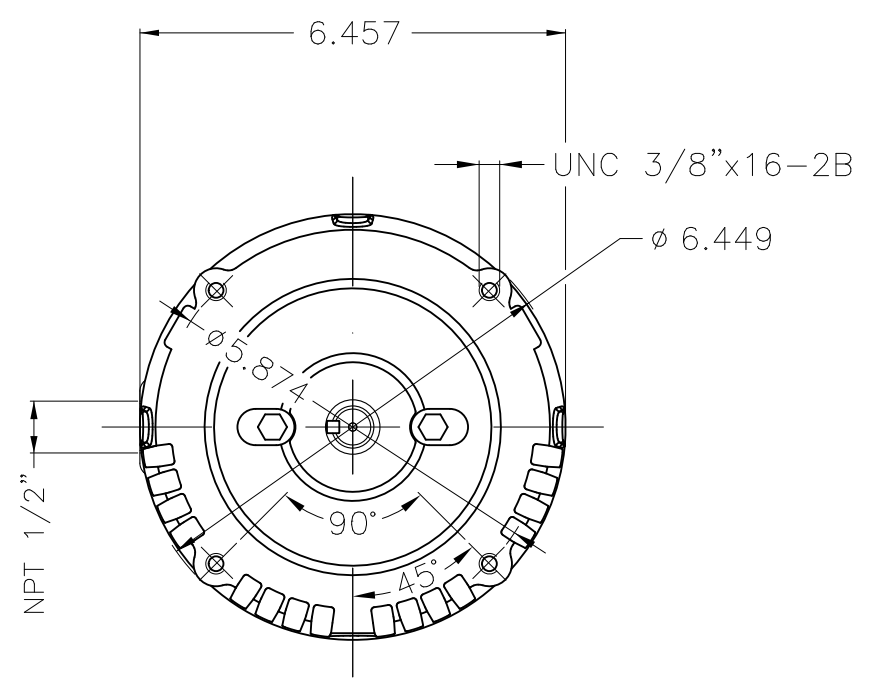
A

B

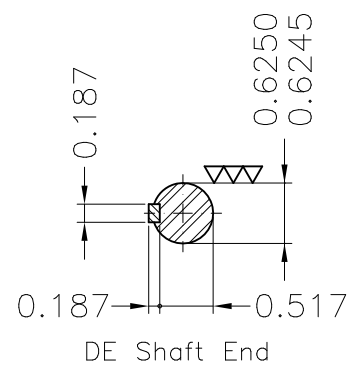
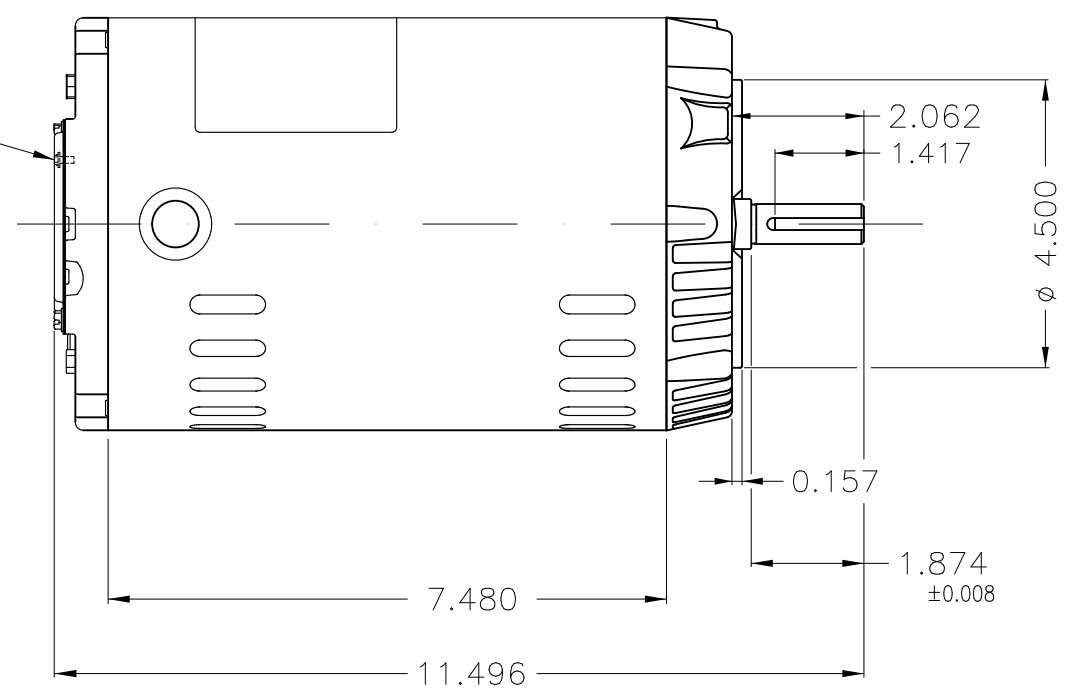
C

D

E



Grounding



Dimensions in inches

Without coating										
Mounting F-1/B14R(D)										
ECM	LOC	SUMMARY OF MODIFICATIONS				EXECUTED	CHECKED	RELEASED	DATE	VER
EXECUTED	PIRWUSER	THREE PH. MOTOR ROLLED STEEL PREM. EFF.					PREVIEW WDD			
CHECKED		FRAME 56C IP21 ODP								
RELEASED										
REL DT.		WMO	Jaragua do Sul	Product Engineering	SHEET	1 / 1				

1 HP 04 Poles 60 Hz

A

XME A3



NEMA
Premium



MADE IN MEXICO

MAT: 12809661

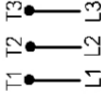
W01.T00IC0X0X

MODEL 001180T3H56CFL-S
14OCT2021 B/N:

PH 3	Hz 60	HP 1.0
FR 56C		KW 0.75
DUTY CONT.		V 575
ALT 1000 m.a.s.l		A 1.26
INS CL F AT 80K		SFA 1.45
AMB 40°C	DES A	SF 1.15
ENCL ODP	CODE L	PF 0.72
		RPM 1760
		AVG.F.L. 83.5%
		EFF.

Inverter duty motor For use on VPWM 1000:1 VT, 5:1 CT

DE 6204-ZZ	ODE 6202-ZZ	MOBIL POLYREX EM
-------------------	--------------------	-------------------------



T1-BLU

T2-WHT

T3-ORG



INTERCHANGE ANY TWO LINE WIRES TO REVERSE THE ROTATION

WARNING: Motor must be grounded in accordance with local and national electrical codes to prevent serious electrical shocks. Disconnect power source before servicing unit.



AVERTISSEMENT: Le moteur doit être mis à la terre

conformément aux codes électriques locaux et nationaux afin d'éviter tout choc électrique grave. Déconnectez l'alimentation avant l'entretien de la machine.

