

TORQUE AND CURRENT VS SPEED CURVE

Three Phase Induction Motor - Squirrel Cage



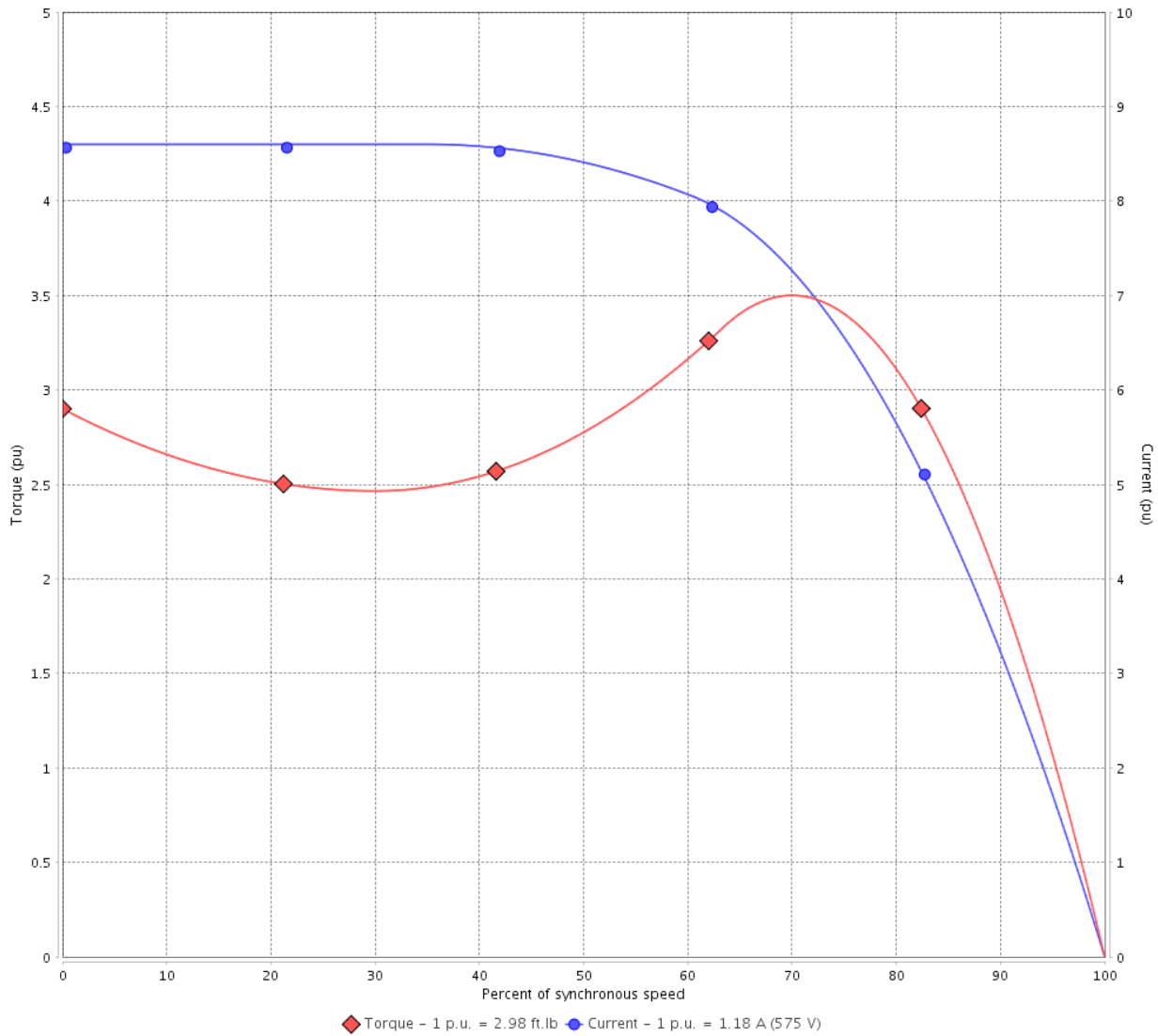
Customer :

Product line : NEMA Premium Efficiency Three-Phase

Product code : 12367209

Catalog # : 00118ST3HIE143T-W22

TORQUE AND CURRENT VS SPEED CURVE



Performance : 575 V 60 Hz 4P

Rated current	: 1.18 A	Moment of inertia (J)	: 0.1172 sq.ft.lb
LRC	: 8.6	Duty cycle	: Cont.(S1)
Rated torque	: 2.98 ft.lb	Insulation class	: F
Locked rotor torque	: 290 %	Service factor	: 1.25
Breakdown torque	: 350 %	Temperature rise	: 80 K
Rated speed	: 1760 rpm	Design	: B

Locked rotor time : 32s (cold) 18s (hot)

Rev.	Changes Summary	Performed	Checked	Date
Performed by			Page 2 / 6	Revision
Checked by				
Date	11/04/2022			

LOAD PERFORMANCE CURVE

Three Phase Induction Motor - Squirrel Cage

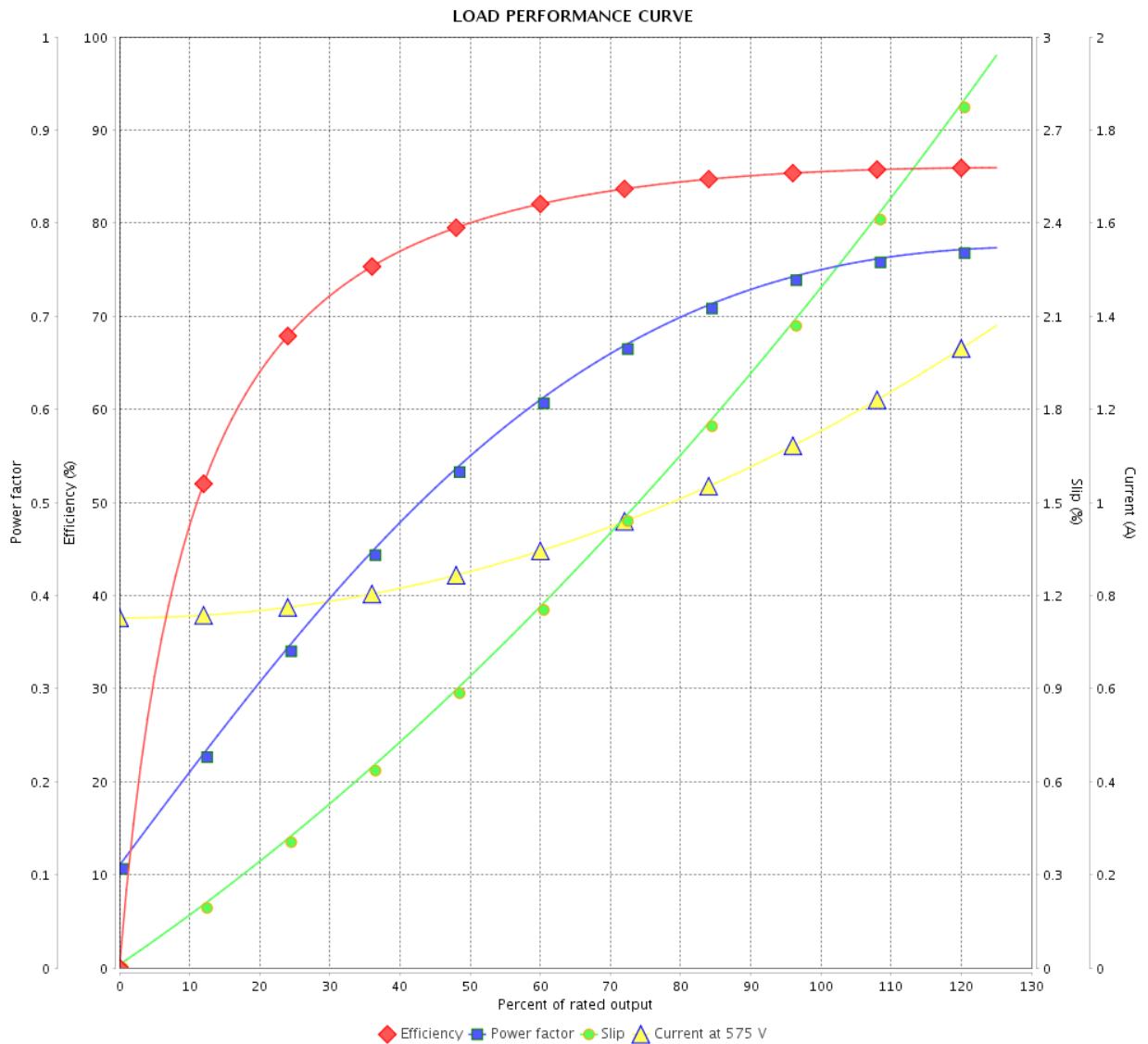


Customer : _____

Product line : NEMA Premium Efficiency Three-Phase

Product code : 12367209

Catalog # : 00118ST3HIE143T-W22



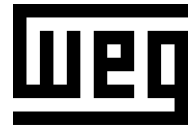
Performance : 575 V 60 Hz 4P

Rated current : 1.18 A
 LRC : 8.6
 Rated torque : 2.98 ft.lb
 Locked rotor torque : 290 %
 Breakdown torque : 350 %
 Rated speed : 1760 rpm

Moment of inertia (J) : 0.1172 sq.ft.lb
 Duty cycle : Cont.(S1)
 Insulation class : F
 Service factor : 1.25
 Temperature rise : 80 K
 Design : B

Rev.	Changes Summary	Performed	Checked	Date
Performed by		Page		Revision
Checked by		3 / 6		
Date	11/04/2022			

THERMAL LIMIT CURVE



Three Phase Induction Motor - Squirrel Cage

Customer :

Product line : NEMA Premium Efficiency Three-Phase
Product code : 12367209
Catalog # : 00118ST3HIE143T-W22

Performance : 575 V 60 Hz 4P

Rated current	: 1.18 A	Moment of inertia (J)	: 0.1172 sq.ft.lb
LRC	: 8.6	Duty cycle	: Cont.(S1)
Rated torque	: 2.98 ft.lb	Insulation class	: F
Locked rotor torque	: 290 %	Service factor	: 1.25
Breakdown torque	: 350 %	Temperature rise	: 80 K
Rated speed	: 1760 rpm	Design	: B

Heating constant

Cooling constant

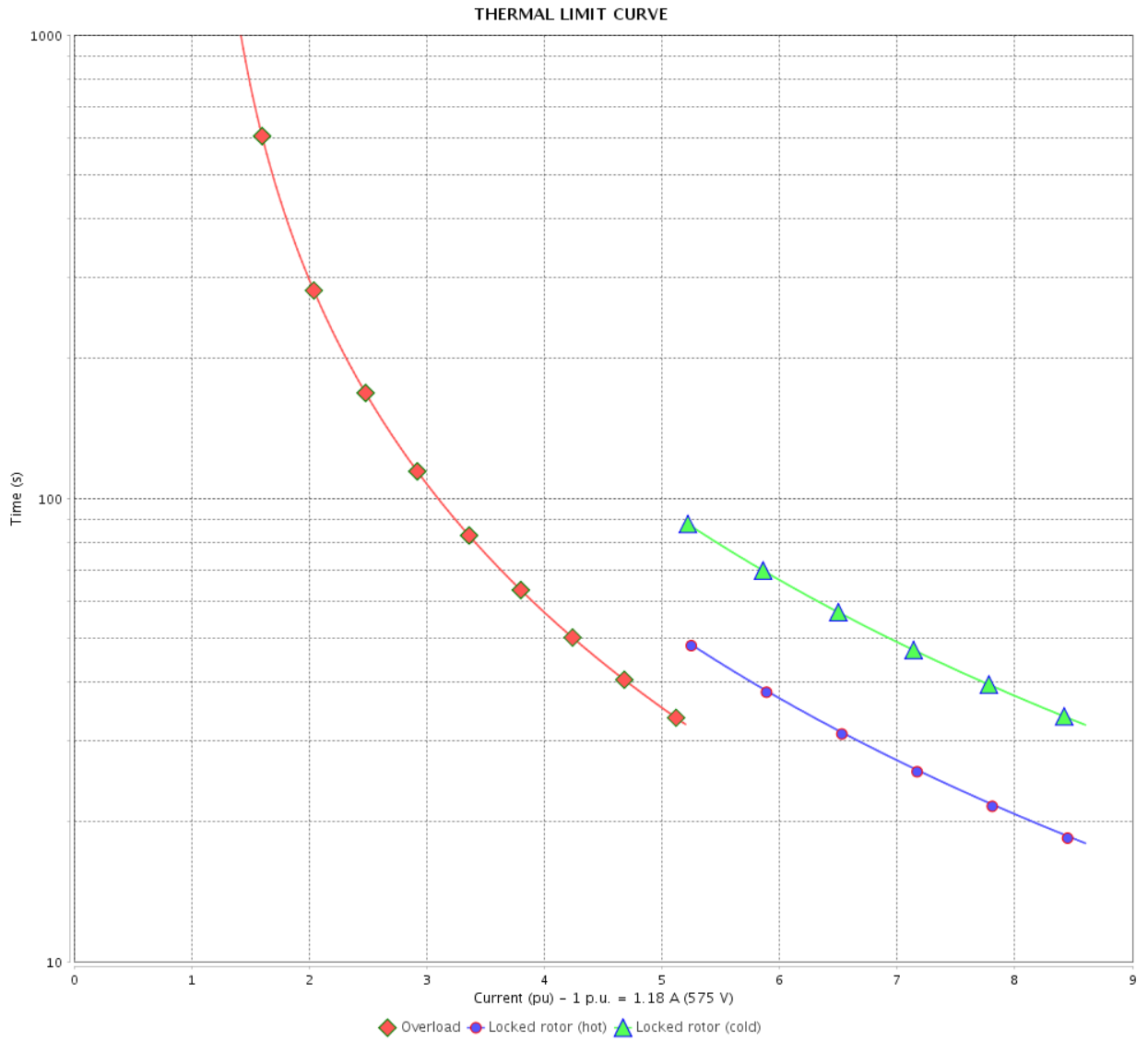
Rev.	Changes Summary	Performed	Checked	Date
Performed by				
Checked by			Page	Revision
Date	11/04/2022		4 / 6	

THERMAL LIMIT CURVE

Three Phase Induction Motor - Squirrel Cage



Customer : _____



Rev.	Changes Summary	Performed	Checked	Date
Performed by		Page		Revision
Checked by		5 / 6		
Date		11/04/2022		

VFD OPERATION CURVE

Three Phase Induction Motor - Squirrel Cage



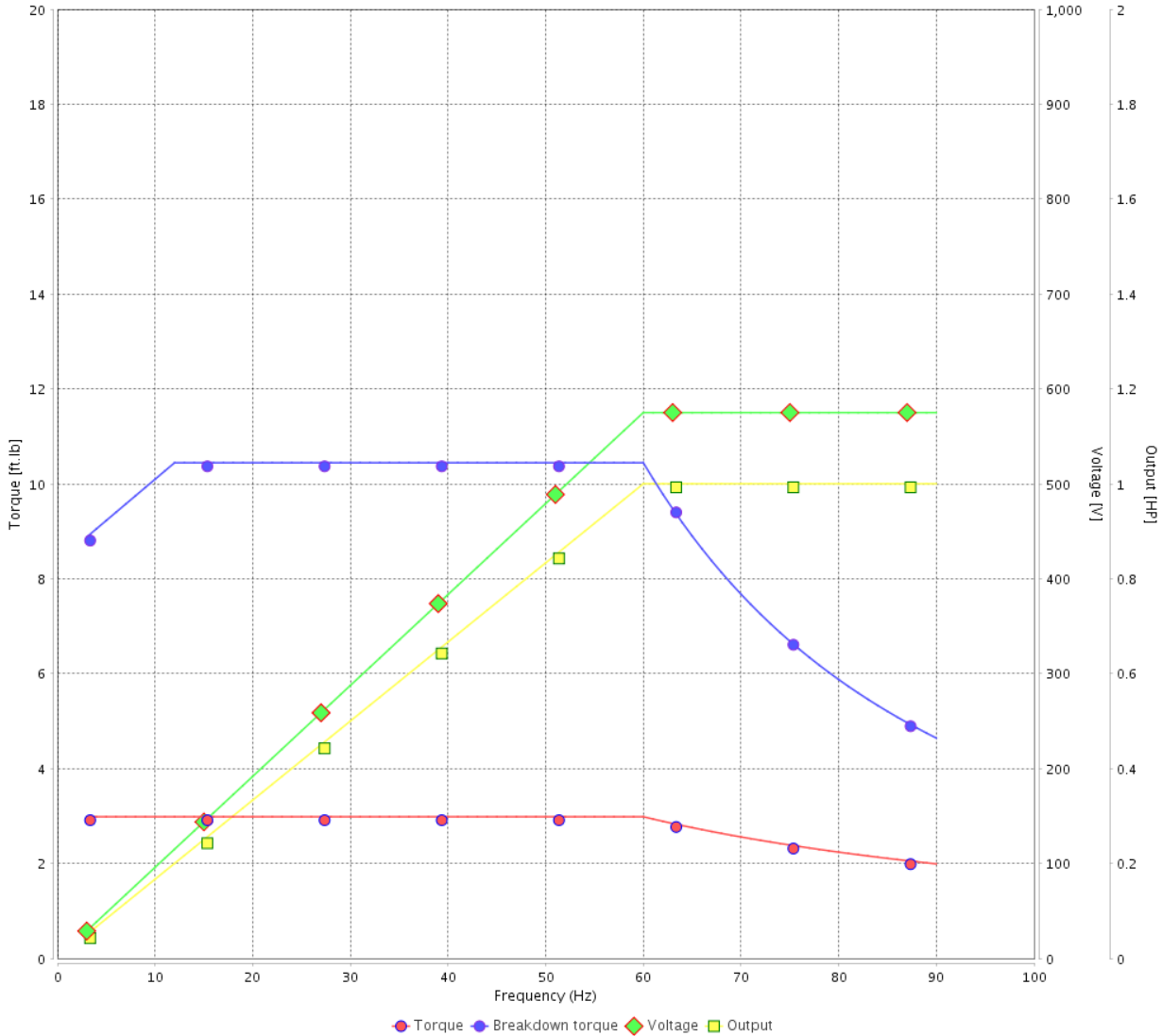
Customer :

Product line : NEMA Premium Efficiency Three-Phase

Product code : 12367209

Catalog # : 00118ST3HIE143T-W22

VFD OPERATION CURVE

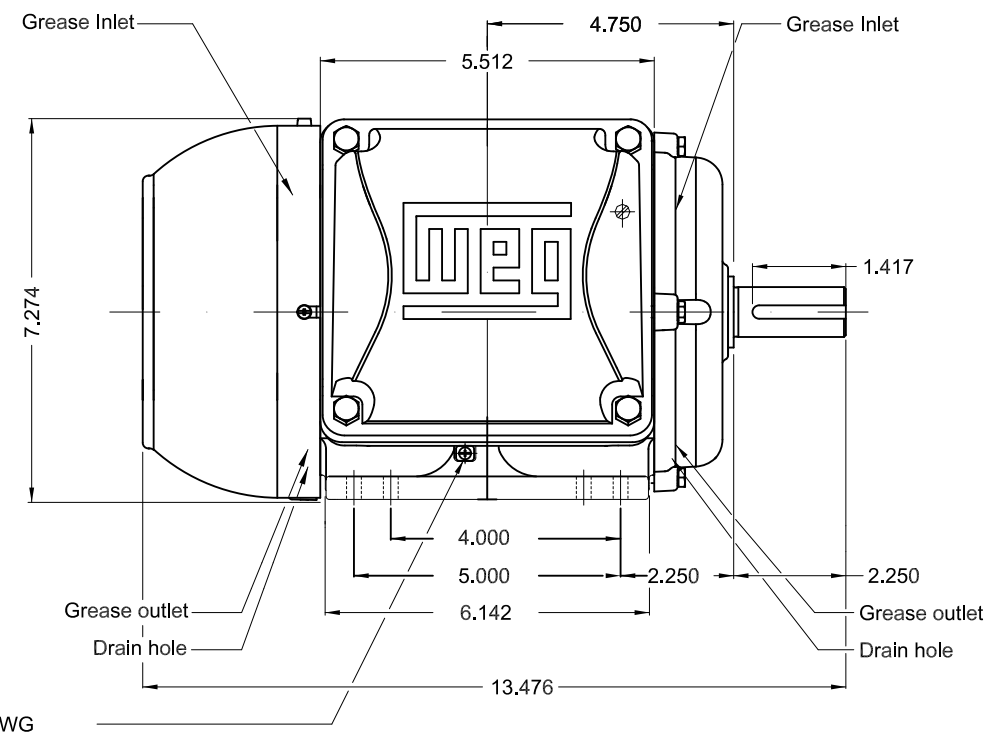
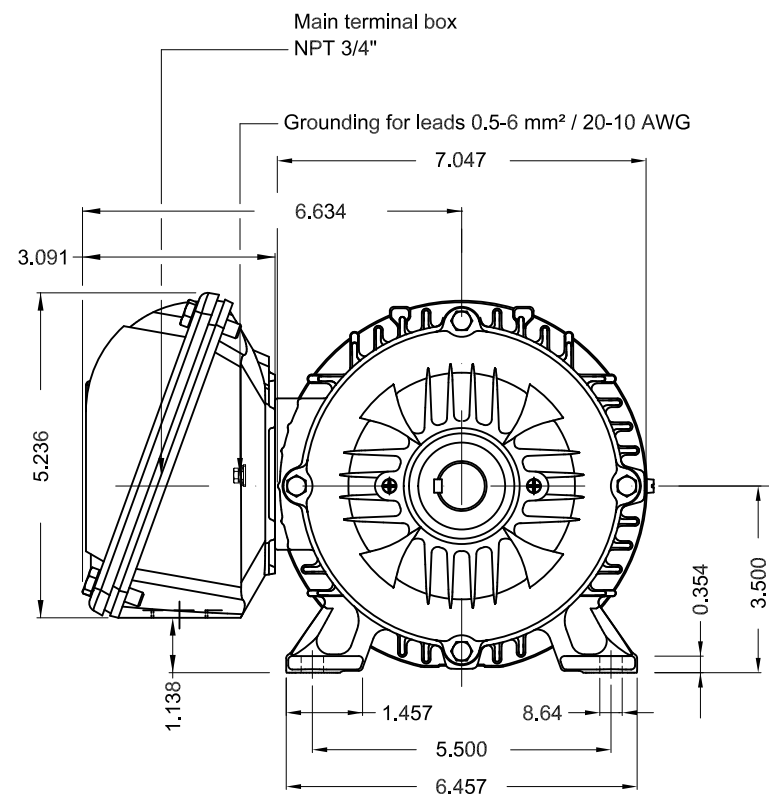


Performance : 575 V 60 Hz 4P

Rated current : 1.18 A
 LRC : 8.6
 Rated torque : 2.98 ft.lb
 Locked rotor torque : 290 %
 Breakdown torque : 350 %
 Rated speed : 1760 rpm

Moment of inertia (J) : 0.1172 sq.ft.lb
 Duty cycle : Cont.(S1)
 Insulation class : F
 Service factor : 1.25
 Temperature rise : 80 K
 Design : B

Rev.	Changes Summary	Performed	Checked	Date
Performed by			Page 6 / 6	Revision
Checked by				
Date	11/04/2022			

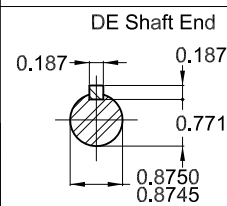


Grounding for leads 0.5-6 mm² / 20-10 AWG

1 HP 04 Poles 60 Hz

Dimensions in inches

Color RAL 5009
 Painting plan 202E
 Mounting B3R(D)



ECM	LOC	SUMMARY OF MODIFICATIONS	EXECUTED	CHECKED	RELEASED	DATE	VER
EXECUTED	PIRWBUSER	THREE PH. MOTOR IEEE 841 W22 PREM. EFF.					
CHECKED		FRAME 143/5T IP55 TEFC					
RELEASED							
REL DT.	WMO	Jaragua do Sul	Product Engineering				

PREVIEW
 WDD



SHEET 1 / 1

MADE IN BRAZIL
12367209



NEMA
Premium

W22

IE000504W22IS

Inverter Duty Motor
Severe Duty

IEEE
841-2009



Class I, Div 2, Gr A, B, C and D - T3
Class I, Zone 2, IIC - T3
Class II, Div 2, Gr F and G - T5
For use on PWM: Gr. A, B, C, D, F and G,
VT 1000:1, CT 20:1, 1.00SF - T4A



FOR SAFE AREA
Mod. TE1BFOXON
CC029A

PH3 60Hz Fr. 143/5T 1000m.a.s.l. IP55 TEFC 57lb

V 575

A 1.18

HP 1.0

kW 0.75

SF 1.25

SFA 1.47

RPM 1760

PF 0.75

AMB 40°C

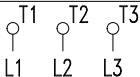
INS cl. F DT80K

NEMA NOM EFF 85.5%

DUTY CONT.

DES B Code M

GUARANT. EFF 82.5%



575V



→ 6205-C3 (4g) 25BC02X30

→ 6204-C3 (4g) 20BC02X30



MOBIL POLYREX EM (20000h)