

DATA SHEET



Three Phase Induction Motor - Squirrel Cage

Customer :						
Product line		: NEMA Premium Efficiency Three-Phase		Product code :	14284312	
				Catalog # :	00118XT3H143T	
Frame	: 143/5T		Locked rotor time	: 32s (cold) 18s (hot)		
Output	: 1 HP (0.75 kW)		Temperature rise	: 80 K		
Poles	: 4		Duty cycle	: Cont.(S1)		
Frequency	: 60 Hz		Ambient temperature	: -20°C to +40°C		
Rated voltage	: 575 V		Altitude	: 1000 m.a.s.l.		
Rated current	: 1.14 A		Protection degree	: IP55		
L. R. Amperes	: 9.84 A		Cooling method	: IC411 - TEFC		
LRC	: 8.6x(Code M)		Mounting	: F-1		
No load current	: 0.748 A		Rotation ¹	: Both (CW and CCW)		
Rated speed	: 1760 rpm		Noise level ²	: 51.0 dB(A)		
Slip	: 2.22 %		Starting method	: Direct On Line		
Rated torque	: 2.99 ft.lb		Approx. weight ³	: 67.7 lb		
Locked rotor torque	: 290 %					
Breakdown torque	: 370 %					
Insulation class	: F					
Service factor	: 1.15					
Moment of inertia (J)	: 0.0975 sq.ft.lb					
Design	: B					
Output	25%	50%	75%	100%	Foundation loads	
Efficiency (%)	77.3	80.0	82.5	85.5	Max. traction : 62 lb	
Power Factor	0.32	0.57	0.70	0.77	Max. compression : 130 lb	
			<u>Drive end</u>		<u>Non drive end</u>	
Bearing type	:		6205 2RS		6204 2RS	
Sealing	:		Oil Seal		Lip Seal	
Lubrication interval	:		-		-	
Lubricant amount	:		-		-	
Lubricant type	:		Mobil Polyrex EM			
Notes						
This revision replaces and cancel the previous one, which must be eliminated. (1) Looking the motor from the shaft end. (2) Measured at 1m and with tolerance of +3dB(A). (3) Approximate weight subject to changes after manufacturing process. (4) At 100% of full load.			These are average values based on tests with sinusoidal power supply, subject to the tolerances stipulated in NEMA MG-1.			
Rev.	Changes Summary			Performed	Checked	Date
Performed by						
Checked by					Page	Revision
Date	11/04/2022				1 / 7	

DATA SHEET

Three Phase Induction Motor - Squirrel Cage



Customer : _____

Thermal protection

ID	Application	Type	Quantity	Sensing Temperature
1	Winding	Thermostat - 2 wires	1 x Phase	155 °C

Rev.	Changes Summary	Performed	Checked	Date
Performed by				
Checked by			Page	Revision
Date	11/04/2022		2 / 7	

TORQUE AND CURRENT VS SPEED CURVE



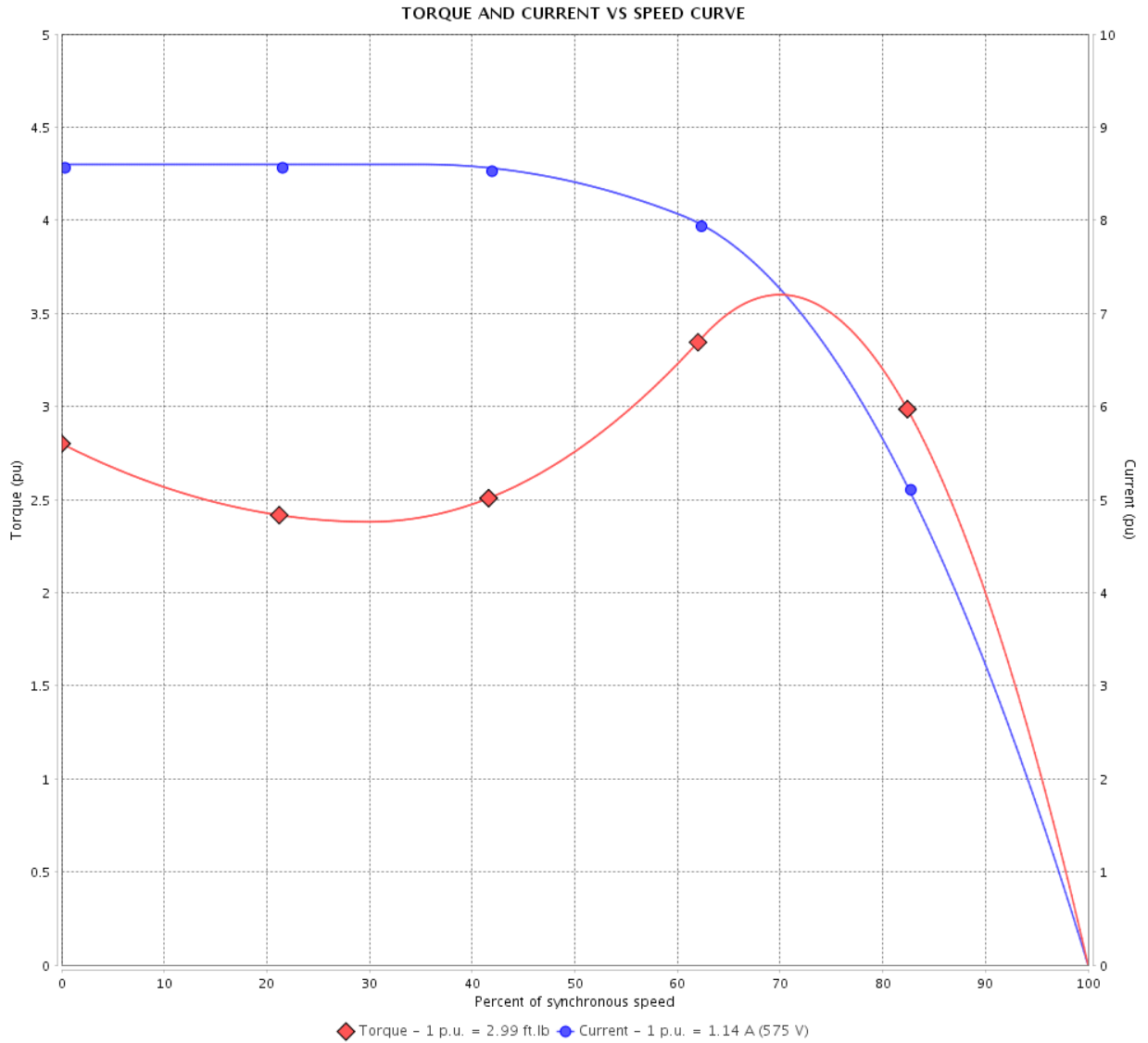
Three Phase Induction Motor - Squirrel Cage

Customer :

Product line : NEMA Premium Efficiency Three-Phase

Product code : 14284312

Catalog # : 00118XT3H143T



Performance : 575 V 60 Hz 4P

Rated current	: 1.14 A	Moment of inertia (J)	: 0.0975 sq.ft.lb
LRC	: 8.6	Duty cycle	: Cont.(S1)
Rated torque	: 2.99 ft.lb	Insulation class	: F
Locked rotor torque	: 290 %	Service factor	: 1.15
Breakdown torque	: 370 %	Temperature rise	: 80 K
Rated speed	: 1760 rpm	Design	: B

Locked rotor time : 32s (cold) 18s (hot)

Rev.	Changes Summary	Performed	Checked	Date
Performed by			Page 3 / 7	Revision
Checked by				
Date	11/04/2022			

LOAD PERFORMANCE CURVE

Three Phase Induction Motor - Squirrel Cage



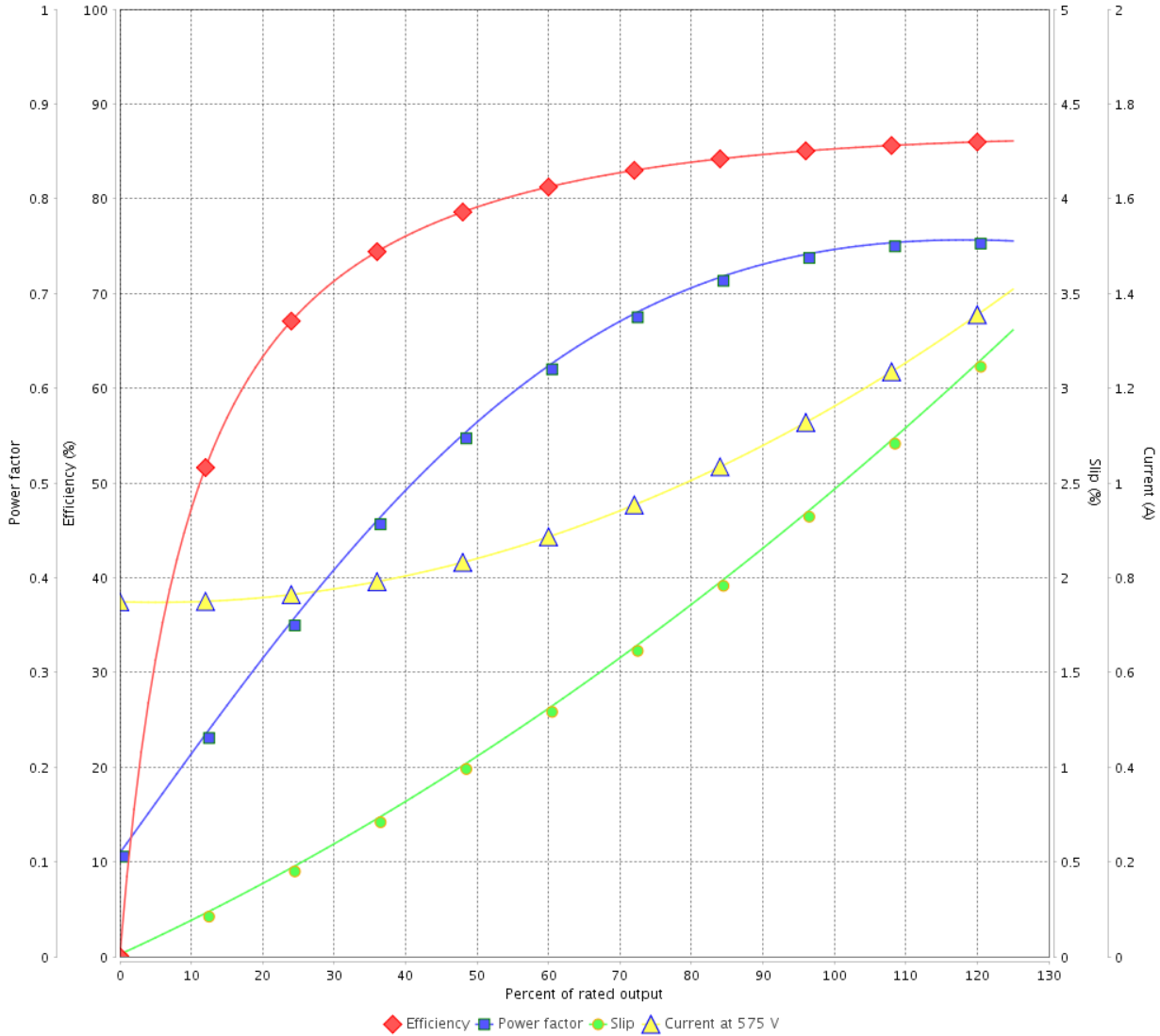
Customer : _____

Product line : NEMA Premium Efficiency Three-Phase

Product code : 14284312

Catalog # : 00118XT3H143T

LOAD PERFORMANCE CURVE



Performance : 575 V 60 Hz 4P

Rated current : 1.14 A
 LRC : 8.6
 Rated torque : 2.99 ft.lb
 Locked rotor torque : 290 %
 Breakdown torque : 370 %
 Rated speed : 1760 rpm

Moment of inertia (J) : 0.0975 sq.ft.lb
 Duty cycle : Cont.(S1)
 Insulation class : F
 Service factor : 1.15
 Temperature rise : 80 K
 Design : B

Rev.	Changes Summary	Performed	Checked	Date
Performed by			Page 4 / 7	Revision
Checked by				
Date	11/04/2022			

THERMAL LIMIT CURVE



Three Phase Induction Motor - Squirrel Cage

Customer :

Product line : NEMA Premium Efficiency Three-Phase
 Product code : 14284312
 Catalog # : 00118XT3H143T

Performance : 575 V 60 Hz 4P

Rated current : 1.14 A	Moment of inertia (J) : 0.0975 sq.ft.lb
LRC : 8.6	Duty cycle : Cont.(S1)
Rated torque : 2.99 ft.lb	Insulation class : F
Locked rotor torque : 290 %	Service factor : 1.15
Breakdown torque : 370 %	Temperature rise : 80 K
Rated speed : 1760 rpm	Design : B

Heating constant

Cooling constant

Rev.	Changes Summary	Performed	Checked	Date
Performed by			Page 5 / 7	Revision
Checked by				
Date	11/04/2022			

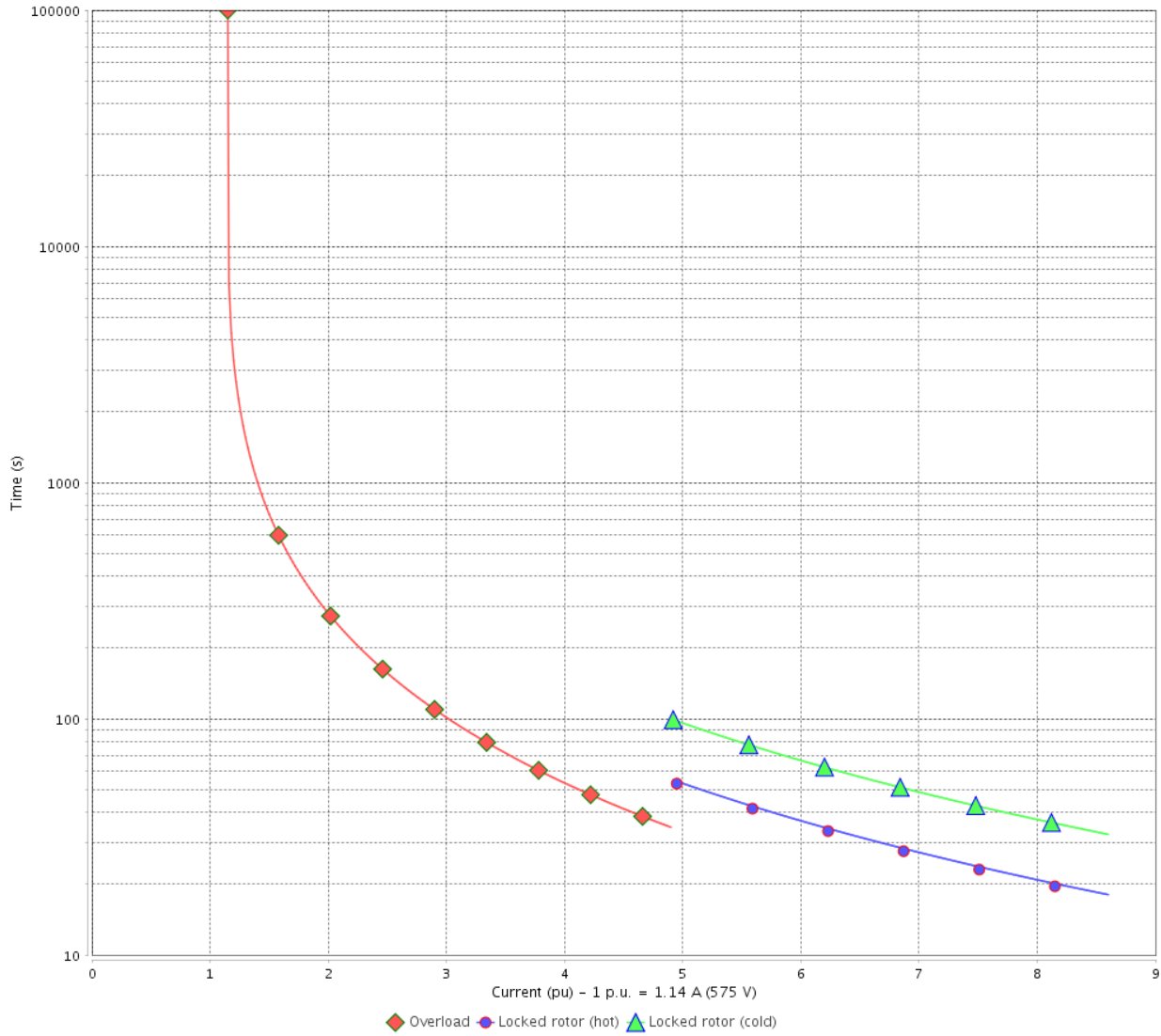
THERMAL LIMIT CURVE

Three Phase Induction Motor - Squirrel Cage



Customer : _____

THERMAL LIMIT CURVE



Rev.	Changes Summary	Performed	Checked	Date
Performed by		Page		Revision
Checked by		6 / 7		
Date	11/04/2022			

VFD OPERATION CURVE

Three Phase Induction Motor - Squirrel Cage

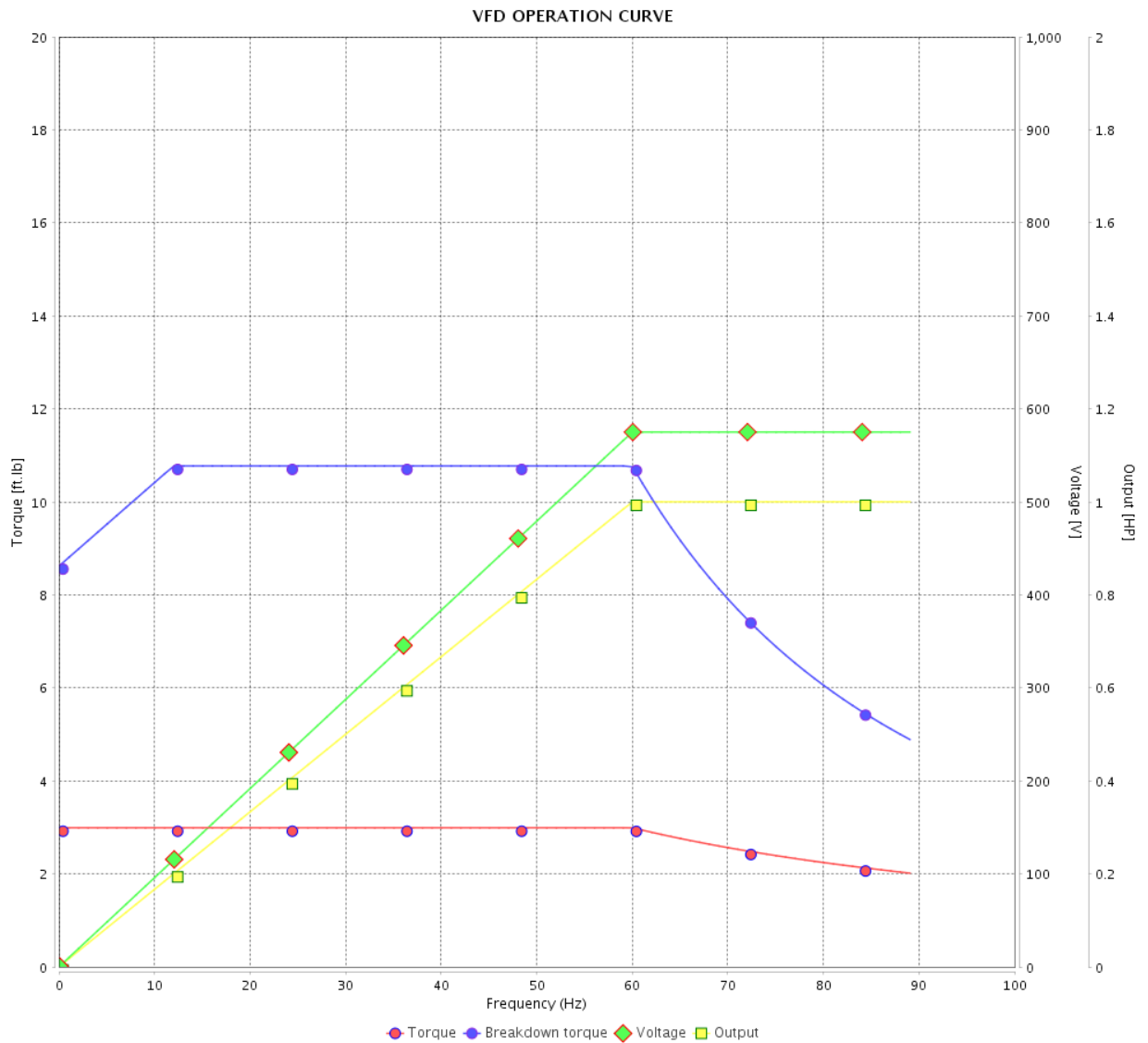


Customer :

Product line : NEMA Premium Efficiency Three-Phase

Product code : 14284312

Catalog # : 00118XT3H143T

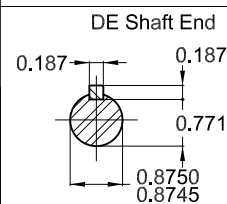
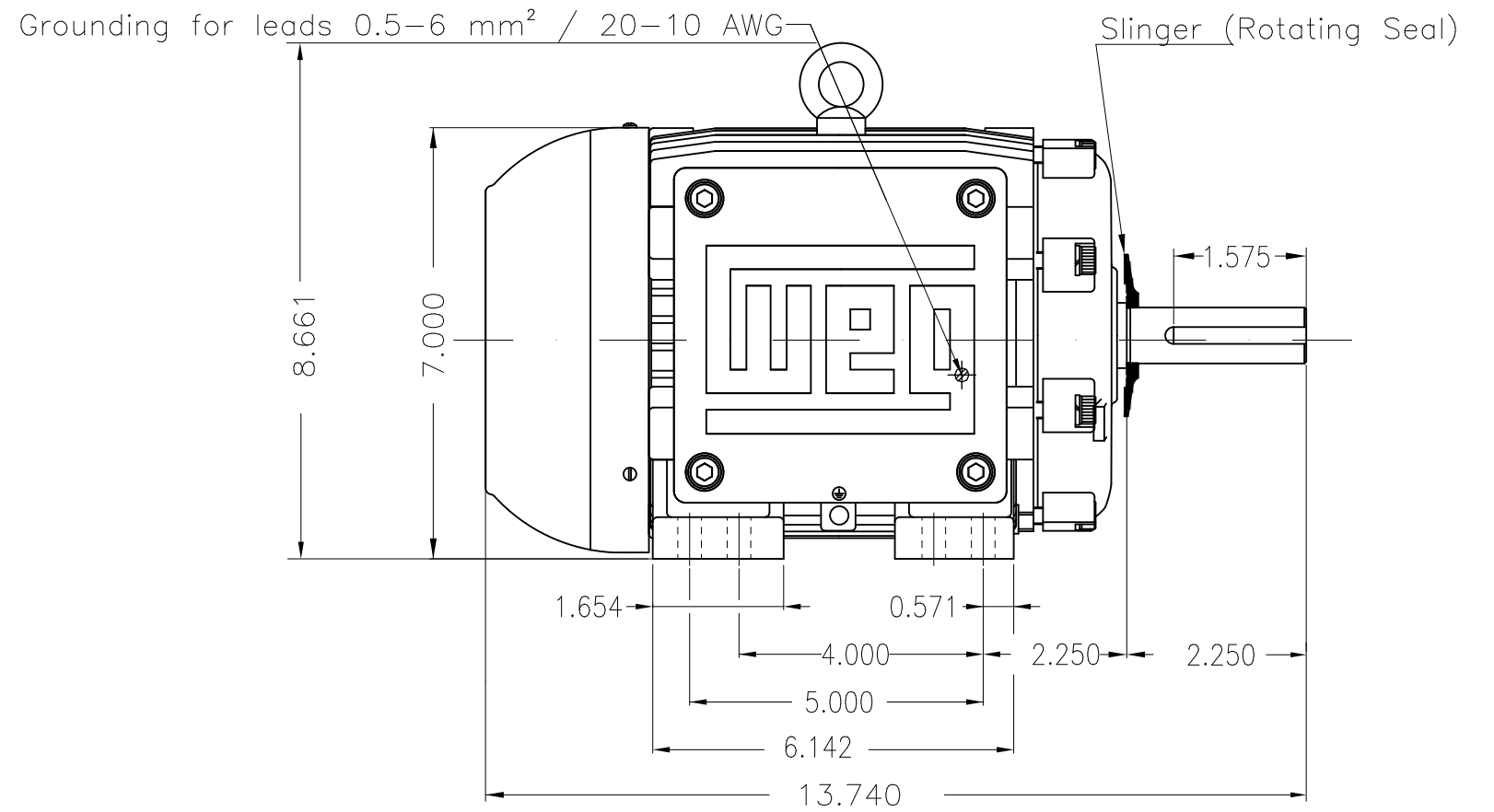
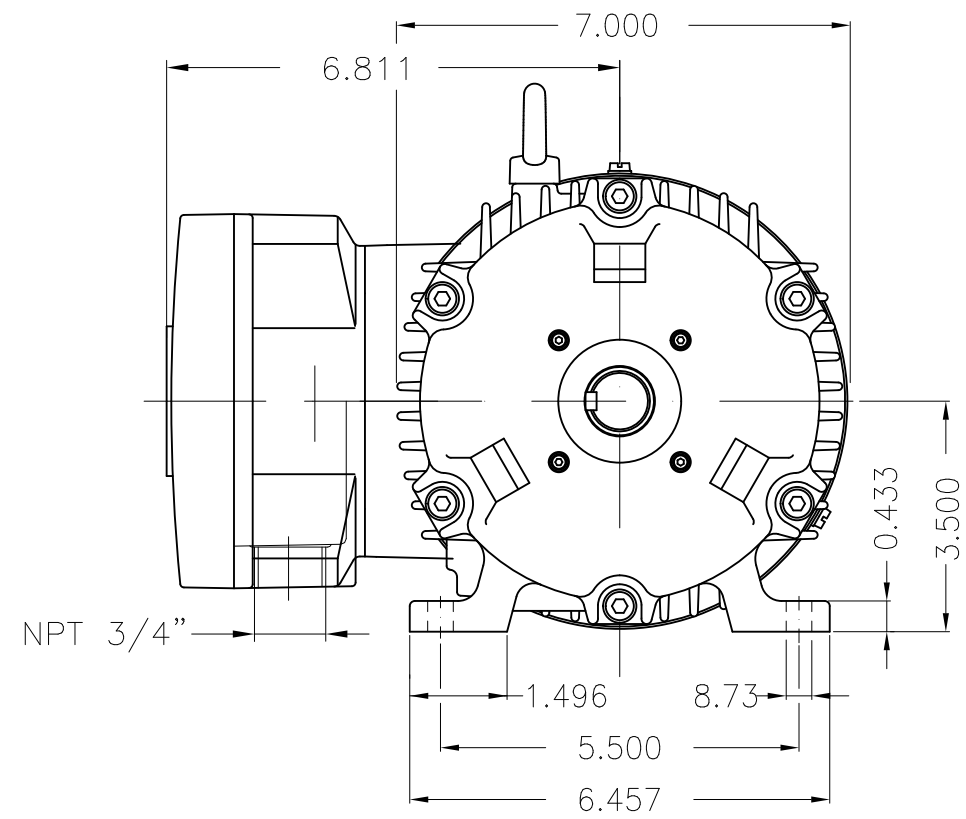


Performance : 575 V 60 Hz 4P

Rated current : 1.14 A
 LRC : 8.6
 Rated torque : 2.99 ft.lb
 Locked rotor torque : 290 %
 Breakdown torque : 370 %
 Rated speed : 1760 rpm

Moment of inertia (J) : 0.0975 sq.ft.lb
 Duty cycle : Cont.(S1)
 Insulation class : F
 Service factor : 1.15
 Temperature rise : 80 K
 Design : B

Rev.	Changes Summary	Performed	Checked	Date
Performed by				Page 7 / 7
Checked by				
Date	11/04/2022			



Color RAL 5009
Painting plan 202P
Mounting NEMA F-1
Mounting B3R(D)

1 HP 04 Poles 60 Hz

Dimensions in inches

ECM	LOC	SUMMARY OF MODIFICATIONS	EXECUTED	CHECKED	RELEASED	DATE	VER
EXECUTED	PIRWBUSER	THREE PH. MOTOR EXPLOSION PROOF PREM. EFF.					
CHECKED		FRAME 143/5T IP55 TEFC					
RELEASED							
REL DT.	WMO	Jaragua do Sul	Product Engineering				

PREVIEW
WDD



SHEET 1 / 1

MADE IN BRAZIL

**W21X NEMA**
Premium

14284312

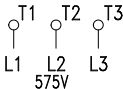
CC029A

Inverter Duty Motor
Severe Duty

LISTED

MODEL 00118XT3H143T

PH 3	FR 143/5T	
HP(kW) 1.0(0.75)		HZ 60 IP55
V 575		A 1.14
RPM 1760		NEMA NOM EFF 85.5%
PF 0.77	SFA 1.31	DES B
INS CL F Δ T 80 K	SF 1.15	ENCL TEFC
DUTY CONT.	CODE L	ALT 1000 m.a.s.l.
AMB 40°C		
AMB 55°C SF1.0		



→ 6205-2RS MOBIL POLYREX EM
 → 6204-2RS

68 Lbs



TEMP CODE T3C
 CSA/UL: Class I - Div. 1 - Groups C and D
 CSA: Class II - Div. 1 - Groups F and G
 CSA: Class I - Zone 1 - IIB

EXPLOSION PROOF MOTOR

FOR USE ON VPWM VFD 1000:1VT, 20:1CT, 1.0SF, T3C, AMB 40°C.