

DATA SHEET



Three Phase Induction Motor - Squirrel Cage

Customer :						
Product line		: Premium Efficiency Three-Phase		Product code :	13575373	
				Catalog # :	00136ET3HW56C-S	
Frame	: W56C		Locked rotor time	: 18s (cold) 10s (hot)		
Output	: 1 HP (0.75 kW)		Temperature rise	: 80 K		
Poles	: 2		Duty cycle	: Cont.(S1)		
Frequency	: 60 Hz		Ambient temperature	: -20°C to +40°C		
Rated voltage	: 575 V		Altitude	: 1000 m.a.s.l.		
Rated current	: 1.20 A		Protection degree	: IP55		
L. R. Amperes	: 10.6 A		Cooling method	: IC411 - TEFC		
LRC	: 8.8x(Code M)		Mounting	: F-1		
No load current	: 0.638 A		Rotation ¹	: Both (CW and CCW)		
Rated speed	: 3435 rpm		Noise level ²	: 65.0 dB(A)		
Slip	: 4.58 %		Starting method	: Direct On Line		
Rated torque	: 1.53 ft.lb		Approx. weight ³	: 21.9 lb		
Locked rotor torque	: 360 %					
Breakdown torque	: 380 %					
Insulation class	: F					
Service factor	: 1.15					
Moment of inertia (J)	: 0.0254 sq.ft.lb					
Output	25%	50%	75%	100%	Foundation loads	
Efficiency (%)	72.4	74.0	77.0	78.5	Max. traction : 46 lb	
Power Factor	0.38	0.63	0.75	0.80	Max. compression : 68 lb	
			<u>Drive end</u>		<u>Non drive end</u>	
Bearing type	:	6203 ZZ		6202 ZZ		
Sealing	:	V'Ring		Without Bearing Seal		
Lubrication interval	:	-		-		
Lubricant amount	:	-		-		
Lubricant type	:	Mobil Polyrex EM				
Notes						
This revision replaces and cancel the previous one, which must be eliminated. (1) Looking the motor from the shaft end. (2) Measured at 1m and with tolerance of +3dB(A). (3) Approximate weight subject to changes after manufacturing process. (4) At 100% of full load.			These are average values based on tests with sinusoidal power supply, subject to the tolerances stipulated in NEMA MG-1.			
Rev.	Changes Summary			Performed	Checked	Date
Performed by						
Checked by					Page	Revision
Date	11/04/2022				1 / 5	

TORQUE AND CURRENT VS SPEED CURVE

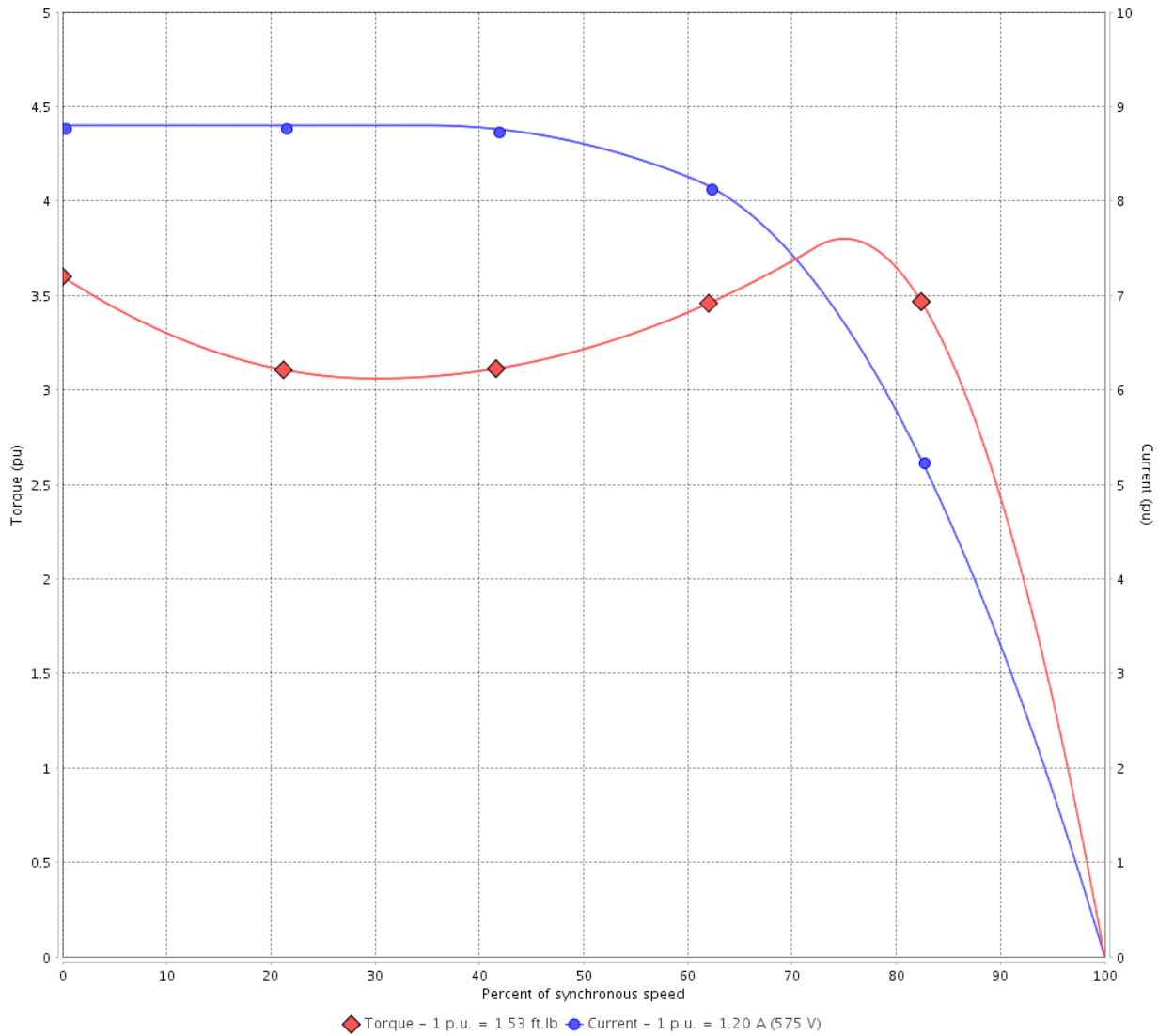
Three Phase Induction Motor - Squirrel Cage



Customer :

Product line : Premium Efficiency Three-Phase Product code : 13575373
 Catalog # : 00136ET3HW56C-S

TORQUE AND CURRENT VS SPEED CURVE



Performance : 575 V 60 Hz 2P

Rated current	: 1.20 A	Moment of inertia (J)	: 0.0254 sq.ft.lb
LRC	: 8.8	Duty cycle	: Cont.(S1)
Rated torque	: 1.53 ft.lb	Insulation class	: F
Locked rotor torque	: 360 %	Service factor	: 1.15
Breakdown torque	: 380 %	Temperature rise	: 80 K
Rated speed	: 3435 rpm		

Locked rotor time : 18s (cold) 10s (hot)

Rev.	Changes Summary	Performed	Checked	Date
Performed by		Page		Revision
Checked by		2 / 5		
Date	11/04/2022			

LOAD PERFORMANCE CURVE

Three Phase Induction Motor - Squirrel Cage



Customer : _____

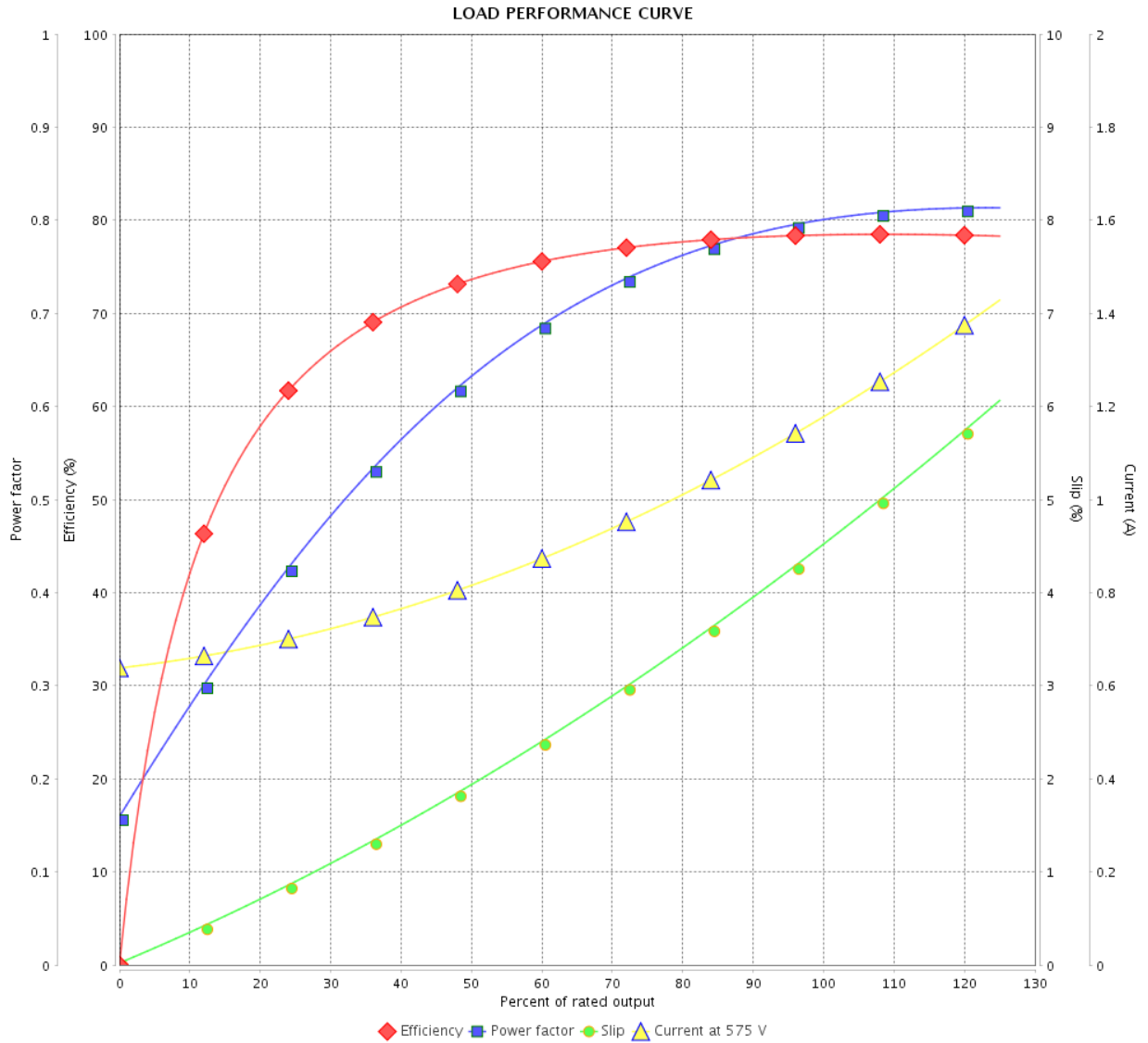
Product line : Premium Efficiency Three-Phase

Product code :

13575373

Catalog # :

00136ET3HW56C-S



Performance : 575 V 60 Hz 2P

Rated current : 1.20 A
 LRC : 8.8
 Rated torque : 1.53 ft.lb
 Locked rotor torque : 360 %
 Breakdown torque : 380 %
 Rated speed : 3435 rpm

Moment of inertia (J) : 0.0254 sq.ft.lb
 Duty cycle : Cont.(S1)
 Insulation class : F
 Service factor : 1.15
 Temperature rise : 80 K

Rev.	Changes Summary	Performed	Checked	Date
Performed by				
Checked by				
Date				
		Page	Revision	
		3 / 5		

THERMAL LIMIT CURVE

Three Phase Induction Motor - Squirrel Cage



Customer :

Product line : Premium Efficiency Three-Phase

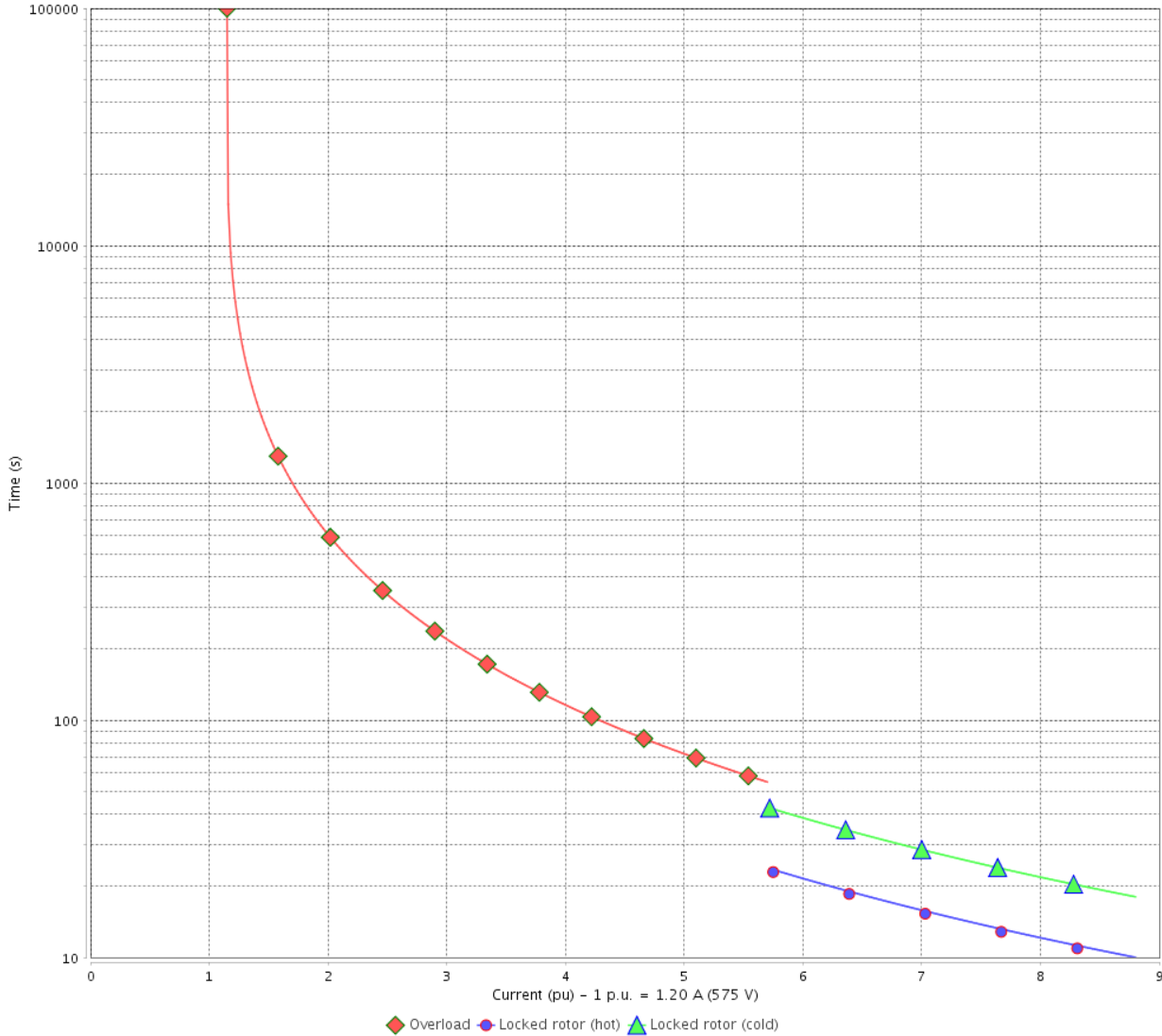
Product code :

13575373

Catalog # :

00136ET3HW56C-S

THERMAL LIMIT CURVE



Performance : 575 V 60 Hz 2P

Rated current : 1.20 A
 LRC : 8.8
 Rated torque : 1.53 ft.lb
 Locked rotor torque : 360 %
 Breakdown torque : 380 %
 Rated speed : 3435 rpm

Moment of inertia (J) : 0.0254 sq.ft.lb
 Duty cycle : Cont.(S1)
 Insulation class : F
 Service factor : 1.15
 Temperature rise : 80 K

Heating constant

Cooling constant

Rev.	Changes Summary	Performed	Checked	Date
Performed by			Page 4 / 5	Revision
Checked by				
Date	11/04/2022			

VFD OPERATION CURVE

Three Phase Induction Motor - Squirrel Cage



Customer : _____

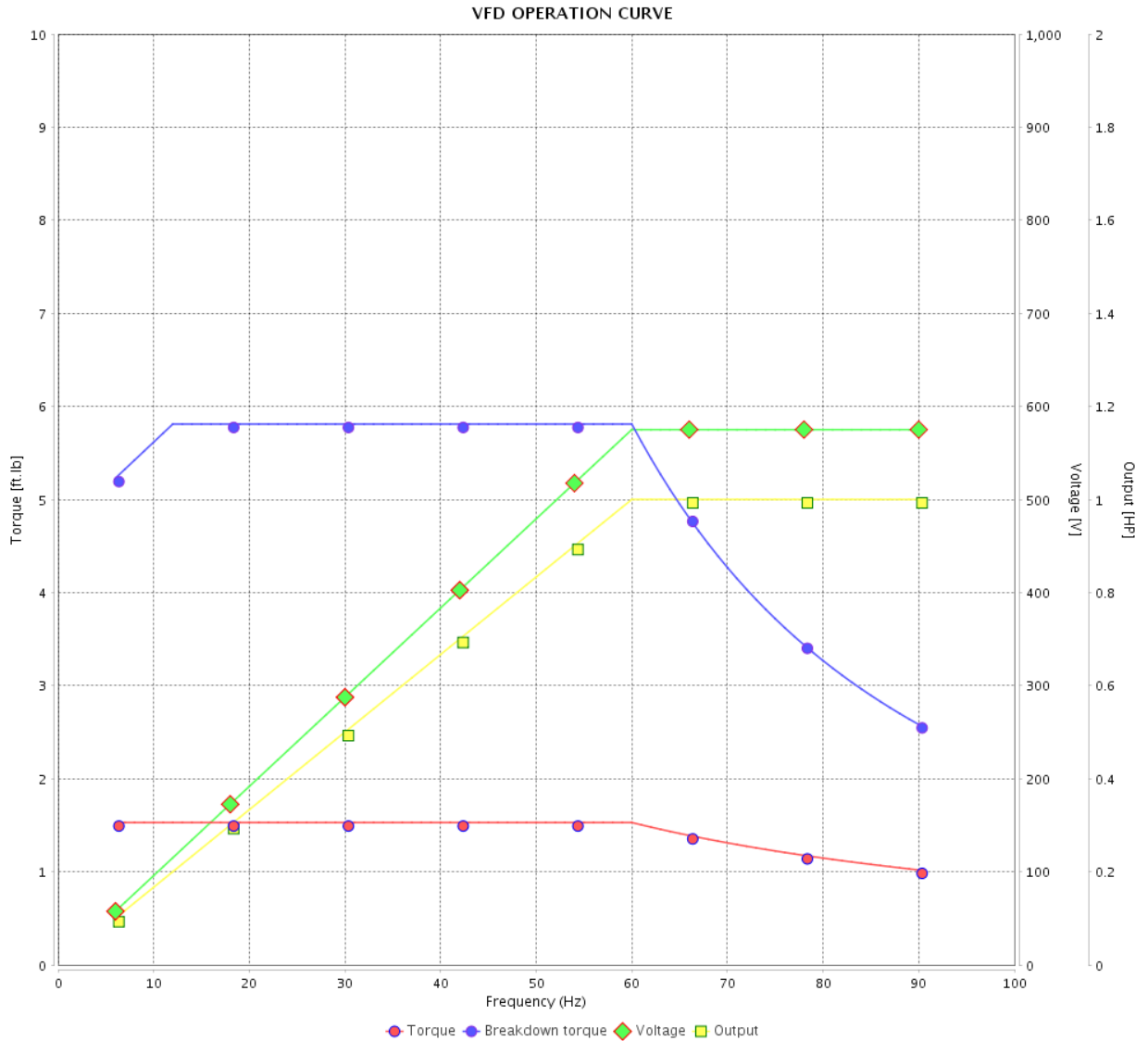
Product line : Premium Efficiency Three-Phase

Product code :

13575373

Catalog # :

00136ET3HW56C-S

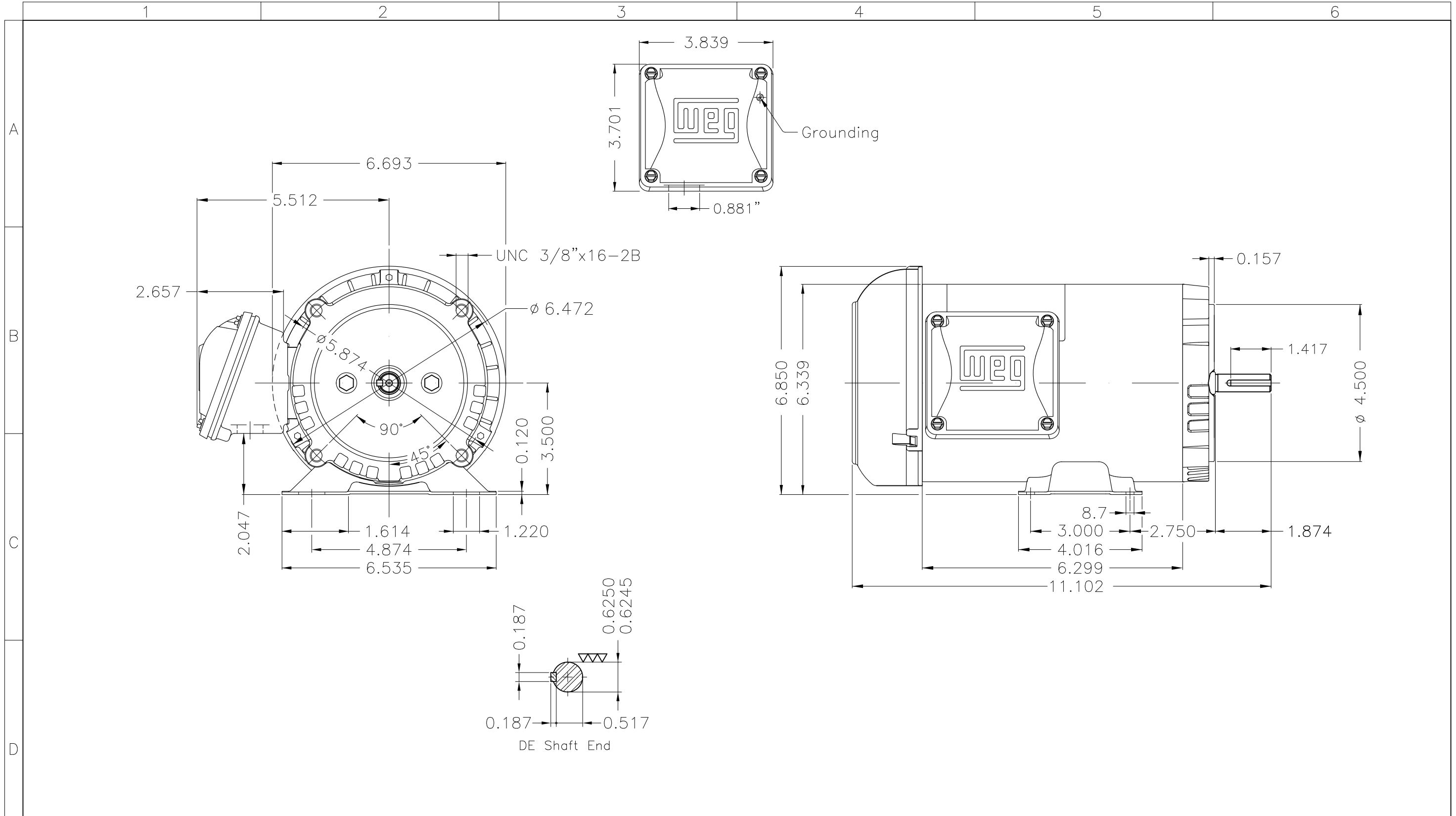


Performance : 575 V 60 Hz 2P

Rated current : 1.20 A
 LRC : 8.8
 Rated torque : 1.53 ft.lb
 Locked rotor torque : 360 %
 Breakdown torque : 380 %
 Rated speed : 3435 rpm


Moment of inertia (J) : 0.0254 sq.ft.lb
 Duty cycle : Cont.(S1)
 Insulation class : F
 Service factor : 1.15
 Temperature rise : 80 K

Rev.	Changes Summary	Performed	Checked	Date
Performed by			Page 5 / 5	Revision
Checked by				
Date	11/04/2022			



A
B
C
D
E

1 2 3 4 5 6

Color Munsell N 1 matte black											
Painting plan 207N											
Mounting F-1/B34R(D)											
ECM	LOC	SUMMARY OF MODIFICATIONS					EXECUTED	CHECKED	RELEASED	DATE	VER
EXECUTED	PIRWBUSER	THREE PH. MOTOR ROLLED STEEL PREM. EFF.					PREVIEW	WDD	SHEET	1 / 1	
CHECKED		FRAME W56C IP55 TEFC									
RELEASED											
REL DT.		WMO	Jaragua do Sul	Product Engineering							

1 HP 02 Poles 60 Hz

A



NEMA
Premium



MADE IN MEXICO

MAT: 13575373

W01.TE0IC0X0X

MODEL 00136ET3HW56C-S

13APR2022 B/N:

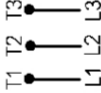
**For 60Hz: Class I, Zone 2, IIC
Class I, Div.2, Gr. A,B,C,D - T3**

**Div 2 Inverter Duty (SF1.00)
CT 2:1/VT 1000:1**

PH 3	Hz 60	HP 1.0
FR W58C		KW 0.75
DUTY CONT.		V 575
ALT 1000 m.a.s.l.		A 1.20
INS CL F AT 80K	IP55	SFA 1.38
AMB 40°C	DES -	SF 1.15
ENCL TEFC	CODE M	PF 0.80
		RPM 3435
		NEMA NOM. EFF 78.5%

For safe area-Inverter duty motor For use on VPWM 1000:1 VT, 5:1 CT

DE 6203-ZZ ODE 6202-ZZ MOBIL POLYREX EM



T1-BLU

T2-WHT

T3-ORG



INTERCHANGE ANY TWO LINE WIRES TO REVERSE THE ROTATION

WARNING: Motor must be grounded in accordance with local and national electrical codes to prevent serious electrical shocks. Disconnect power source before servicing unit.



AVERTISSEMENT: Le moteur doit être mis à la terre

conformément aux codes électriques locaux et nationaux afin d'éviter tout choc électrique grave. Déconnectez l'alimentation avant l'entretien de la machine.

