

# DATA SHEET



## Three Phase Induction Motor - Squirrel Cage

Customer :																			
Product line	: NEMA Premium Efficiency Three-Phase																		
Product code :	12675411																		
Catalog # :	00152ET3H182T-S																		
Frame : 182/4T Output : 1.5 HP (1.1 kW) Poles : 6 Frequency : 60 Hz Rated voltage : 575 V Rated current : 1.78 A L. R. Amperes : 12.3 A LRC : 6.9x(Code K) No load current : 1.09 A Rated speed : 1170 rpm Slip : 2.50 % Rated torque : 6.73 ft.lb Locked rotor torque : 240 % Breakdown torque : 340 % Insulation class : F Service factor : 1.15 Moment of inertia (J) : 0.2800 sq.ft.lb Design : B	Locked rotor time : 99s (cold) 55s (hot) Temperature rise : 80 K Duty cycle : Cont.(S1) Ambient temperature : -20°C to +40°C Altitude : 1000 m.a.s.l. Protection degree : IP55 Cooling method : IC411 - TEFC Mounting : F-1 Rotation <sup>1</sup> : Both (CW and CCW) Noise level <sup>2</sup> : 52.0 dB(A) Starting method : Direct On Line Approx. weight <sup>3</sup> : 70.9 lb																		
Output	25%    50%    75%    100%																		
Efficiency (%)	82.8    84.0    86.5    87.5																		
Power Factor	0.29    0.50    0.63    0.71																		
Foundation loads																			
Max. traction : 111 lb																			
Max. compression : 181 lb																			
	<table border="0" style="width:100%;"> <tr> <td style="width: 50%;"></td> <td style="text-align: center;"><u>Drive end</u></td> <td style="text-align: center;"><u>Non drive end</u></td> </tr> <tr> <td>Bearing type :</td> <td style="text-align: center;">6206 ZZ</td> <td style="text-align: center;">6205 ZZ</td> </tr> <tr> <td>Sealing :</td> <td style="text-align: center;">V'Ring</td> <td style="text-align: center;">Without Bearing Seal</td> </tr> <tr> <td>Lubrication interval :</td> <td style="text-align: center;">-</td> <td style="text-align: center;">-</td> </tr> <tr> <td>Lubricant amount :</td> <td style="text-align: center;">-</td> <td style="text-align: center;">-</td> </tr> <tr> <td>Lubricant type :</td> <td colspan="2" style="text-align: center;">Mobil Polyrex EM</td> </tr> </table>		<u>Drive end</u>	<u>Non drive end</u>	Bearing type :	6206 ZZ	6205 ZZ	Sealing :	V'Ring	Without Bearing Seal	Lubrication interval :	-	-	Lubricant amount :	-	-	Lubricant type :	Mobil Polyrex EM	
	<u>Drive end</u>	<u>Non drive end</u>																	
Bearing type :	6206 ZZ	6205 ZZ																	
Sealing :	V'Ring	Without Bearing Seal																	
Lubrication interval :	-	-																	
Lubricant amount :	-	-																	
Lubricant type :	Mobil Polyrex EM																		
Notes																			
This revision replaces and cancel the previous one, which must be eliminated. (1) Looking the motor from the shaft end. (2) Measured at 1m and with tolerance of +3dB(A). (3) Approximate weight subject to changes after manufacturing process. (4) At 100% of full load.																			
These are average values based on tests with sinusoidal power supply, subject to the tolerances stipulated in NEMA MG-1.																			
Rev.	Changes Summary	Performed	Checked	Date															
Performed by																			
Checked by			Page	Revision															
Date	12/04/2022		1 / 6																

# TORQUE AND CURRENT VS SPEED CURVE

## Three Phase Induction Motor - Squirrel Cage



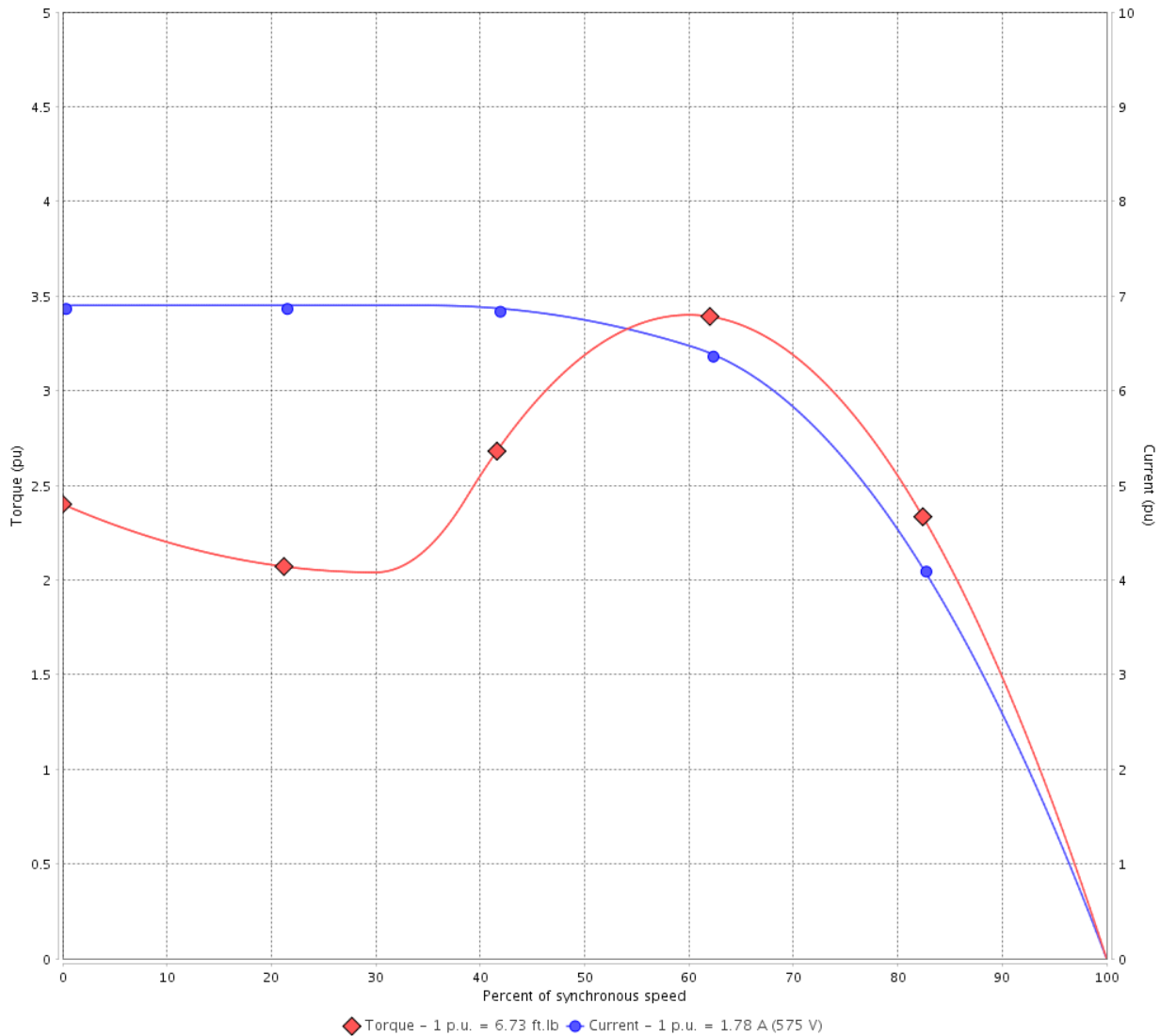
Customer :

Product line : NEMA Premium Efficiency Three-Phase

Product code : 12675411

Catalog # : 00152ET3H182T-S

TORQUE AND CURRENT VS SPEED CURVE



Performance : 575 V 60 Hz 6P

Rated current	: 1.78 A	Moment of inertia (J)	: 0.2800 sq.ft.lb
LRC	: 6.9	Duty cycle	: Cont.(S1)
Rated torque	: 6.73 ft.lb	Insulation class	: F
Locked rotor torque	: 240 %	Service factor	: 1.15
Breakdown torque	: 340 %	Temperature rise	: 80 K
Rated speed	: 1170 rpm	Design	: B

Locked rotor time : 99s (cold) 55s (hot)

Rev.	Changes Summary	Performed	Checked	Date
Performed by			Page 2 / 6	Revision
Checked by				
Date	12/04/2022			

# LOAD PERFORMANCE CURVE

## Three Phase Induction Motor - Squirrel Cage

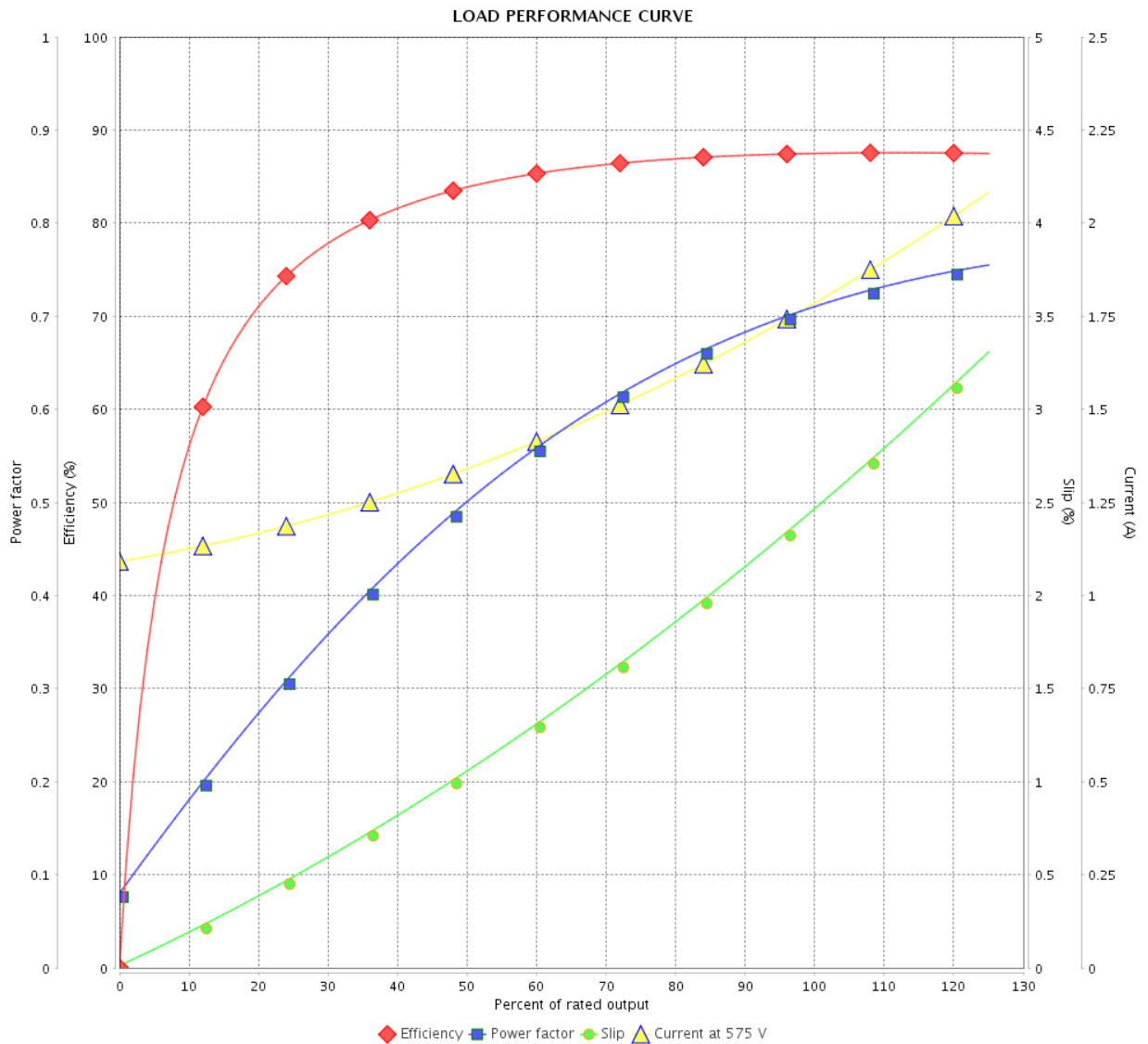


Customer :

Product line : NEMA Premium Efficiency Three-Phase

Product code : 12675411

Catalog # : 00152ET3H182T-S



Performance : 575 V 60 Hz 6P

Rated current : 1.78 A  
 LRC : 6.9  
 Rated torque : 6.73 ft.lb  
 Locked rotor torque : 240 %  
 Breakdown torque : 340 %  
 Rated speed : 1170 rpm

Moment of inertia (J) : 0.2800 sq.ft.lb  
 Duty cycle : Cont.(S1)  
 Insulation class : F  
 Service factor : 1.15  
 Temperature rise : 80 K  
 Design : B

Rev.	Changes Summary	Performed	Checked	Date
Performed by		Page		Revision
Checked by		3 / 6		
Date	12/04/2022			

# THERMAL LIMIT CURVE



## Three Phase Induction Motor - Squirrel Cage

Customer :

Product line : NEMA Premium Efficiency Three-Phase  
 Product code : 12675411  
 Catalog # : 00152ET3H182T-S

Performance : 575 V 60 Hz 6P

Rated current : 1.78 A	Moment of inertia (J) : 0.2800 sq.ft.lb
LRC : 6.9	Duty cycle : Cont.(S1)
Rated torque : 6.73 ft.lb	Insulation class : F
Locked rotor torque : 240 %	Service factor : 1.15
Breakdown torque : 340 %	Temperature rise : 80 K
Rated speed : 1170 rpm	Design : B

Heating constant

Cooling constant

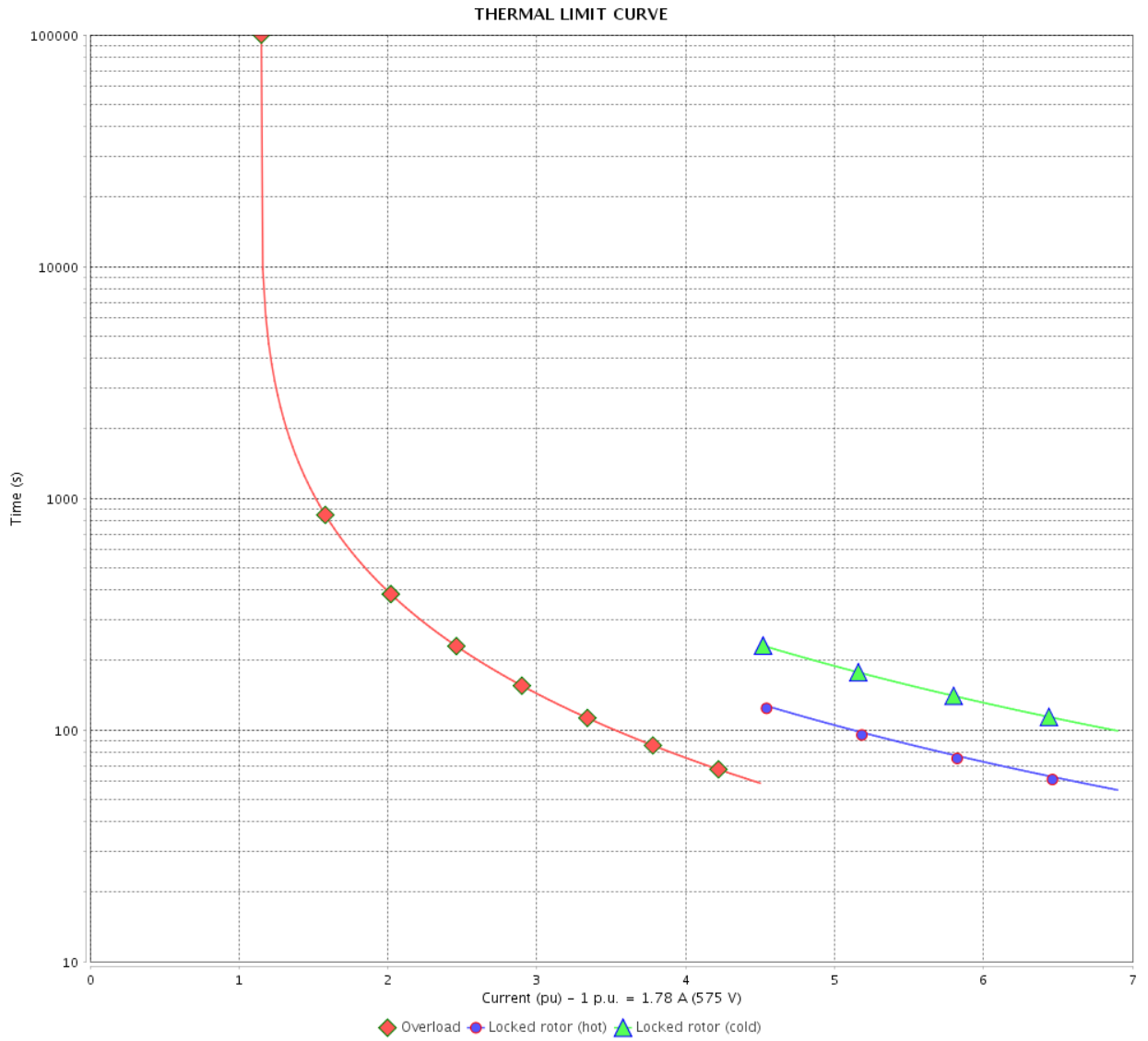
Rev.	Changes Summary	Performed	Checked	Date
Performed by			Page	Revision
Checked by				
Date	12/04/2022			

# THERMAL LIMIT CURVE

Three Phase Induction Motor - Squirrel Cage



Customer : \_\_\_\_\_



Rev.	Changes Summary	Performed	Checked	Date
Performed by		Page 5 / 6		Revision
Checked by				
Date				

# VFD OPERATION CURVE

Three Phase Induction Motor - Squirrel Cage



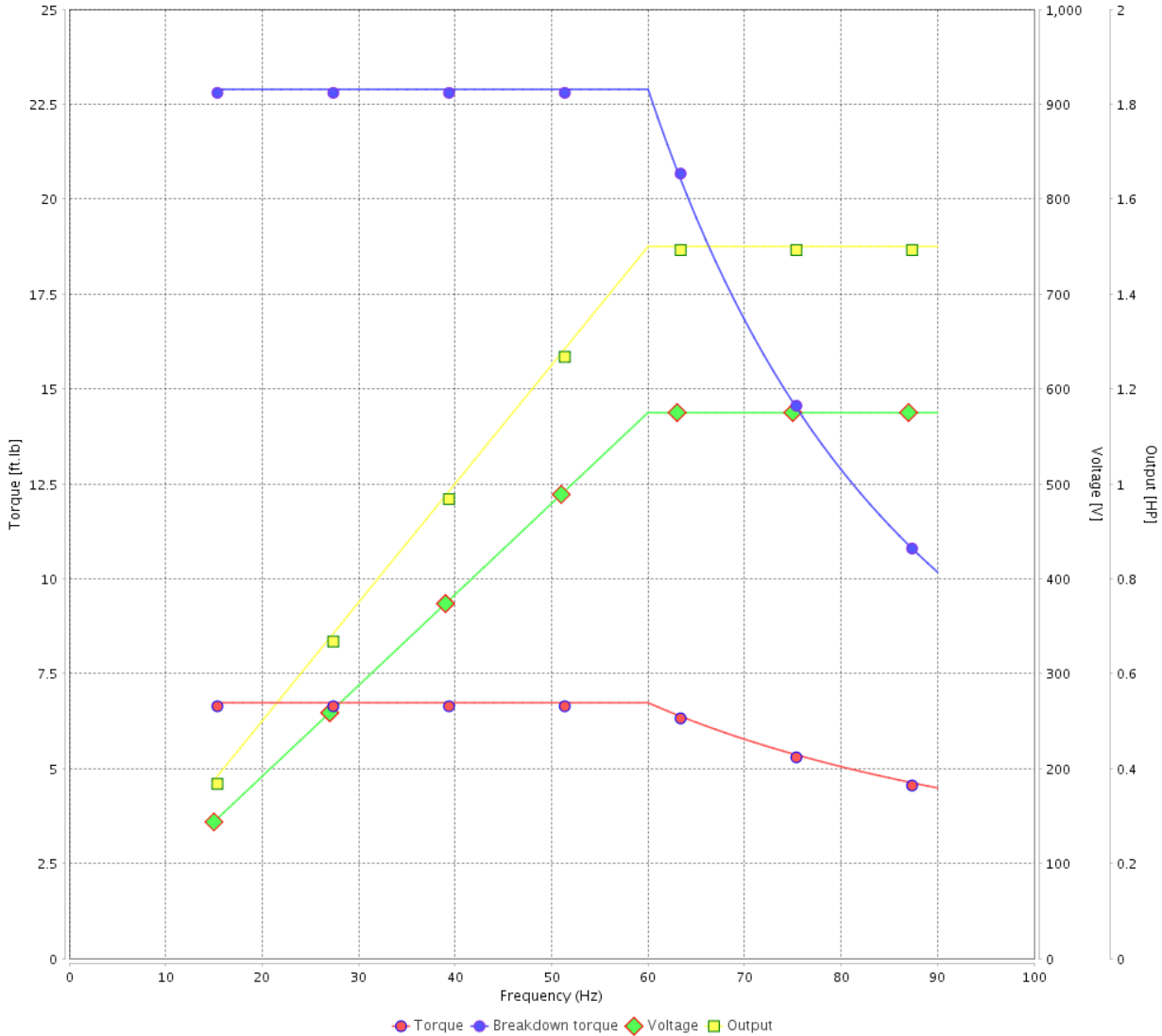
Customer :

Product line : NEMA Premium Efficiency Three-Phase

Product code : 12675411

Catalog # : 00152ET3H182T-S

VFD OPERATION CURVE



Performance : 575 V 60 Hz 6P

Rated current : 1.78 A  
 LRC : 6.9  
 Rated torque : 6.73 ft.lb  
 Locked rotor torque : 240 %  
 Breakdown torque : 340 %  
 Rated speed : 1170 rpm

Moment of inertia (J) : 0.2800 sq.ft.lb  
 Duty cycle : Cont.(S1)  
 Insulation class : F  
 Service factor : 1.15  
 Temperature rise : 80 K  
 Design : B

Rev.	Changes Summary	Performed	Checked	Date
Performed by			Page 6 / 6	Revision
Checked by				
Date	12/04/2022			

1 2 3 4 5 6

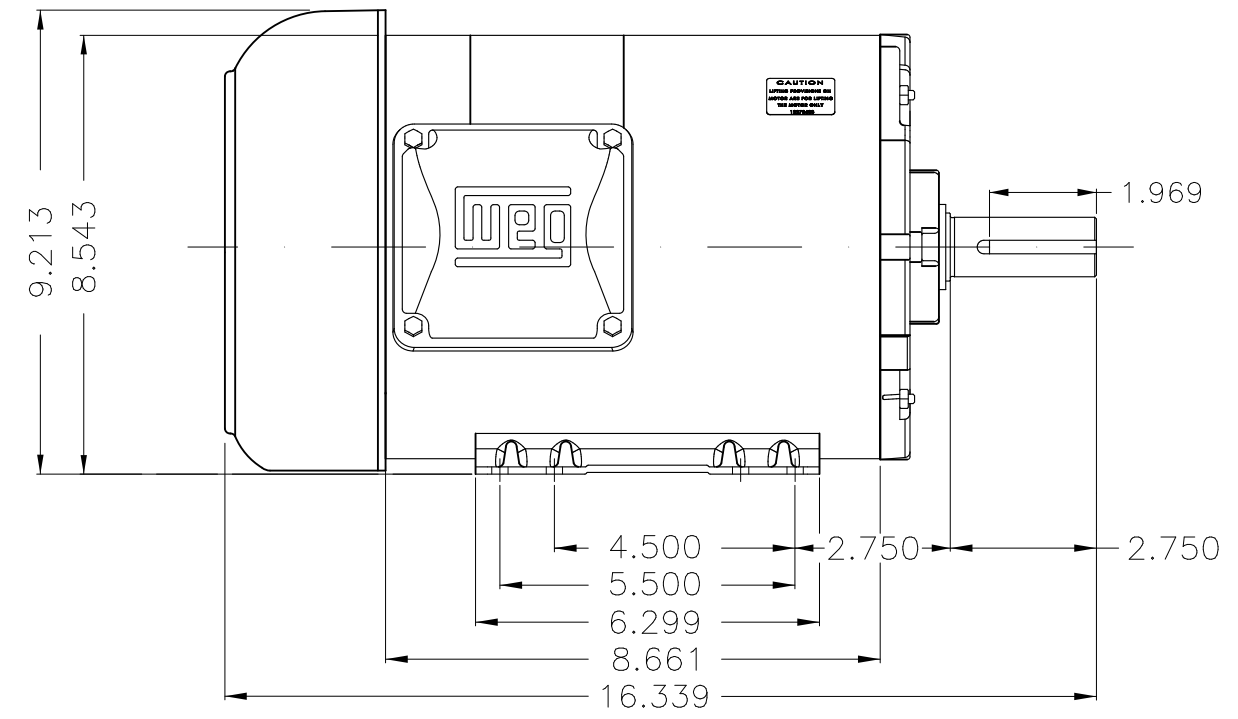
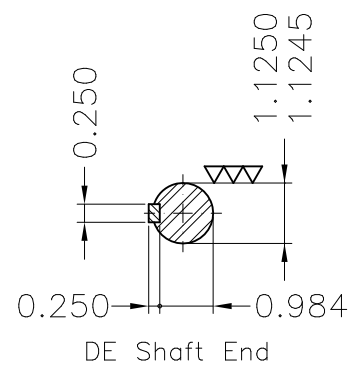
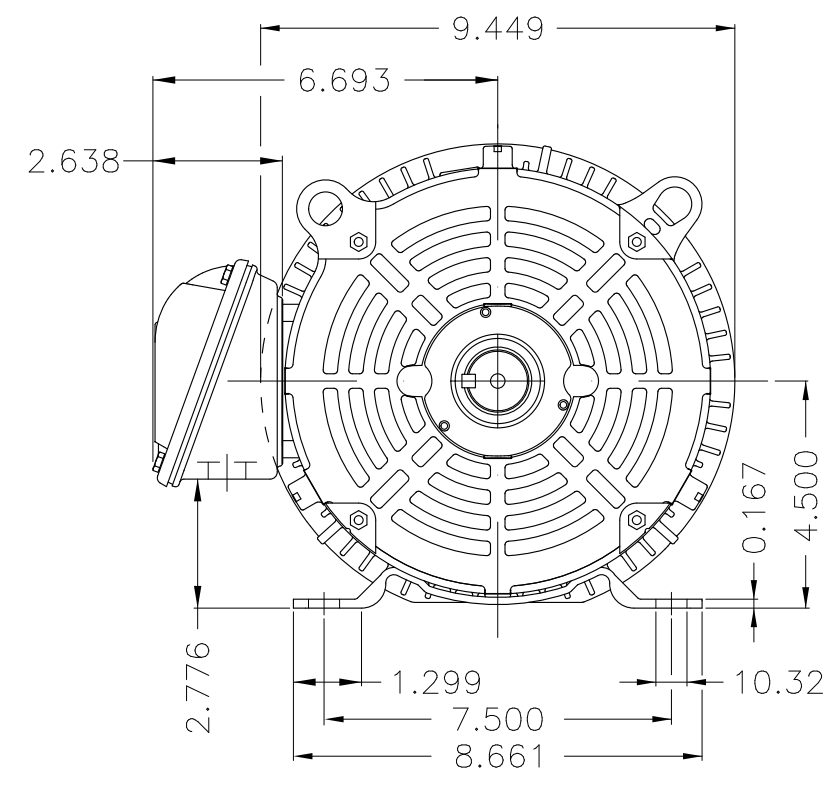
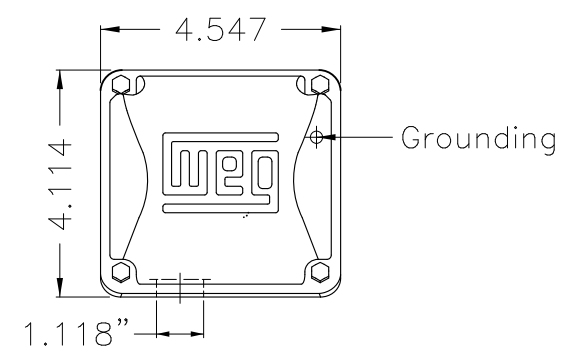
A

B

C

D

E



Color Munsell N 1 matte black  
 Painting plan 207N  
 Mounting F-1/B3R(D)

ECM	LOC	SUMMARY OF MODIFICATIONS	EXECUTED	CHECKED	RELEASED	DATE	VER
EXECUTED	PIRWUSER	THREE PH. MOTOR ROLLED STEEL PREM. EFF. FRAME 182/4T IP55 TEFC					
CHECKED							
RELEASED							
REL DT.	WMO	Jaragua do Sul	Product Engineering	SHEET		1 / 1	

1.5 HP 06 Poles 60 Hz

A

PREVIEW  
 WDD



**NEMA**  
**Premium**



MADE IN MEXICO

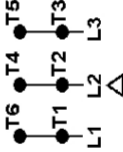
**MAT: 12675411 CC029A**  
**W01.TE0IC0X0N**  
**HT001506NPW01**  
**05NOV2021 S/N:**

**For 60Hz: Class I, Zone 2, IIC**  
**Class I, Div.2, Gr. A,B,C,D - T3**  
**Div 2 Inverter Duty (SF1.00)**  
**CT 2:1/VT 1000:1**

PH 3	Hz 60	HP 1.5
FR 182/4T		KW 1.1
DUTY CONT.		V 575
ALT 1000 m.a.s.l.		A 1.78
INS CL F AT 80K	IP55	SFA 2.05
AMB 40°C	DES B	SF 1.15
ENCL TEFC	CODE K	PF 0.71
		RPM 1170
		NEMA NOM. EFF 87.5%

**For safe area-inverter duty motor For use on VPWM 1000:1 VT, 4:1 CT**

**DE 6206-ZZ ODE 6205-ZZ MOBIL POLYREX EM**



T1-BLU  
T2-WHT  
T3-ORG  
T4-YEL  
T5-BLK  
T6-GRY

**INTERCHANGE ANY TWO LINE WIRES TO REVERSE THE ROTATION**

**WARNING:** Motor must be grounded in accordance with local and national electrical codes to prevent serious electrical shocks. Disconnect power source before servicing unit.



**AVERTISSEMENT:** Le moteur doit être mis à la terre

conformément aux codes électriques locaux et nationaux afin d'éviter tout choc électrique grave. Déconnectez l'alimentation avant l'entretien de la machine.

