

DATA SHEET



Three Phase Induction Motor - Squirrel Cage

Customer :

Product line : NEMA Premium Efficiency Three-Phase
 Product code : 14458609
 Catalog # : 00152XT3H182T

Frame	: 182/4T	Locked rotor time	: 63s (cold) 35s (hot)
Output	: 1.5 HP (1.1 kW)	Temperature rise	: 80 K
Poles	: 6	Duty cycle	: Cont.(S1)
Frequency	: 60 Hz	Ambient temperature	: -20°C to +40°C
Rated voltage	: 575 V	Altitude	: 1000 m.a.s.l.
Rated current	: 1.86 A	Protection degree	: IP55
L. R. Amperes	: 12.2 A	Cooling method	: IC411 - TEFC
LRC	: 6.6x(Code K)	Mounting	: F-1
No load current	: 1.12 A	Rotation ¹	: Both (CW and CCW)
Rated speed	: 1165 rpm	Noise level ²	: 52.0 dB(A)
Slip	: 2.92 %	Starting method	: Direct On Line
Rated torque	: 6.76 ft.lb	Approx. weight ³	: 123 lb
Locked rotor torque	: 229 %		
Breakdown torque	: 330 %		
Insulation class	: F		
Service factor	: 1.15		
Moment of inertia (J)	: 0.4212 sq.ft.lb		
Design	: B		

Output	25%	50%	75%	100%	Foundation loads	
Efficiency (%)	83.3	84.5	86.5	87.5	Max. traction	: 81 lb
Power Factor	0.27	0.47	0.59	0.68	Max. compression	: 204 lb

		<u>Drive end</u>	<u>Non drive end</u>
Bearing type	:	6307 2RS	6206 2RS
Sealing	:	Oil Seal	Lip Seal
Lubrication interval	:	-	-
Lubricant amount	:	-	-
Lubricant type	:	Mobil Polyrex EM	

Notes

This revision replaces and cancel the previous one, which must be eliminated.
 (1) Looking the motor from the shaft end.
 (2) Measured at 1m and with tolerance of +3dB(A).
 (3) Approximate weight subject to changes after manufacturing process.
 (4) At 100% of full load.

These are average values based on tests with sinusoidal power supply, subject to the tolerances stipulated in NEMA MG-1.

Rev.	Changes Summary		Performed	Checked	Date
Performed by					
Checked by					
Date	12/04/2022			Page 1 / 7	Revision

DATA SHEET

Three Phase Induction Motor - Squirrel Cage



Customer : _____

Thermal protection

ID	Application	Type	Quantity	Sensing Temperature
1	Winding	Thermostat - 2 wires	1 x Phase	155 °C

Rev.	Changes Summary	Performed	Checked	Date
Performed by				
Checked by			Page	Revision
Date	12/04/2022		2 / 7	

TORQUE AND CURRENT VS SPEED CURVE



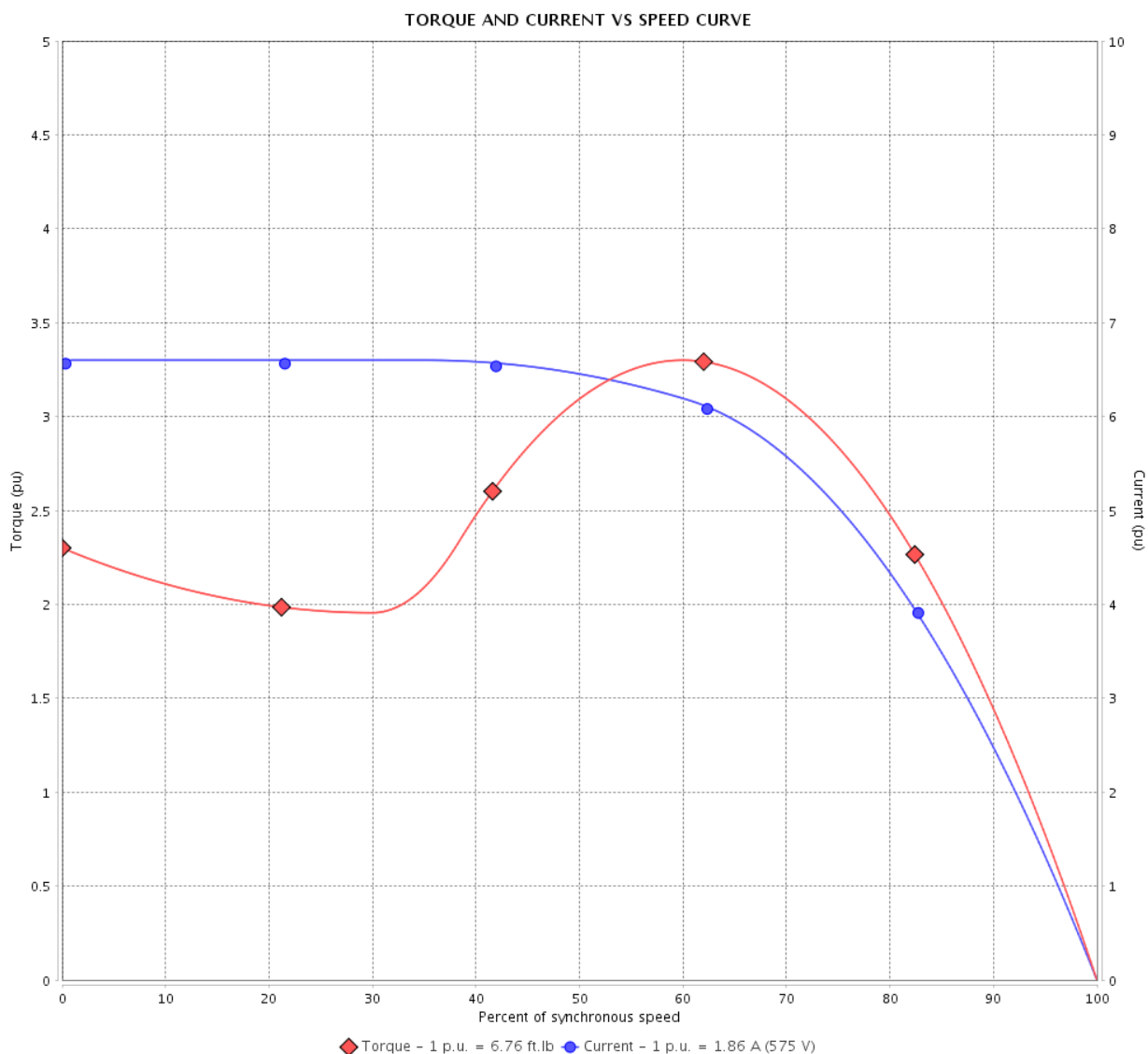
Three Phase Induction Motor - Squirrel Cage

Customer :

Product line : NEMA Premium Efficiency Three-Phase

Product code : 14458609

Catalog # : 00152XT3H182T



Performance : 575 V 60 Hz 6P

Rated current	: 1.86 A	Moment of inertia (J)	: 0.4212 sq.ft.lb
LRC	: 6.6	Duty cycle	: Cont.(S1)
Rated torque	: 6.76 ft.lb	Insulation class	: F
Locked rotor torque	: 229 %	Service factor	: 1.15
Breakdown torque	: 330 %	Temperature rise	: 80 K
Rated speed	: 1165 rpm	Design	: B

Locked rotor time : 63s (cold) 35s (hot)

Rev.	Changes Summary	Performed	Checked	Date
Performed by			Page 3 / 7	Revision
Checked by				
Date	12/04/2022			

LOAD PERFORMANCE CURVE

Three Phase Induction Motor - Squirrel Cage



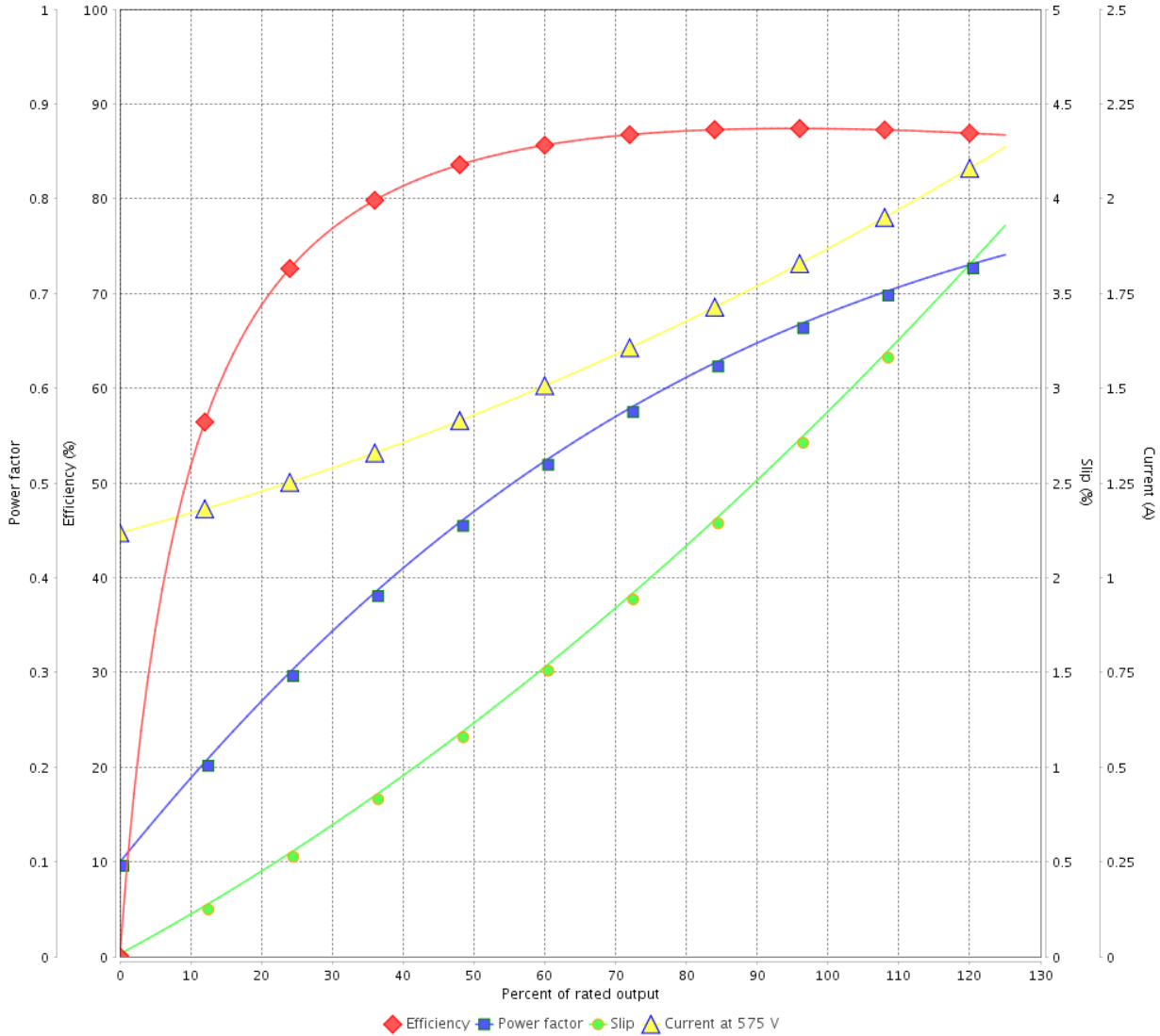
Customer :

Product line : NEMA Premium Efficiency Three-Phase

Product code : 14458609

Catalog # : 00152XT3H182T

LOAD PERFORMANCE CURVE



Performance : 575 V 60 Hz 6P

Rated current : 1.86 A
 LRC : 6.6
 Rated torque : 6.76 ft.lb
 Locked rotor torque : 229 %
 Breakdown torque : 330 %
 Rated speed : 1165 rpm

Moment of inertia (J) : 0.4212 sq.ft.lb
 Duty cycle : Cont.(S1)
 Insulation class : F
 Service factor : 1.15
 Temperature rise : 80 K
 Design : B

Rev.	Changes Summary	Performed	Checked	Date
Performed by			Page 4 / 7	Revision
Checked by				
Date	12/04/2022			

THERMAL LIMIT CURVE



Three Phase Induction Motor - Squirrel Cage

Customer :

Product line : NEMA Premium Efficiency Three-Phase
 Product code : 14458609
 Catalog # : 00152XT3H182T

Performance : 575 V 60 Hz 6P

Rated current : 1.86 A	Moment of inertia (J) : 0.4212 sq.ft.lb
LRC : 6.6	Duty cycle : Cont.(S1)
Rated torque : 6.76 ft.lb	Insulation class : F
Locked rotor torque : 229 %	Service factor : 1.15
Breakdown torque : 330 %	Temperature rise : 80 K
Rated speed : 1165 rpm	Design : B

Heating constant

Cooling constant

Rev.	Changes Summary	Performed	Checked	Date
Performed by			Page 5 / 7	Revision
Checked by				
Date	12/04/2022			

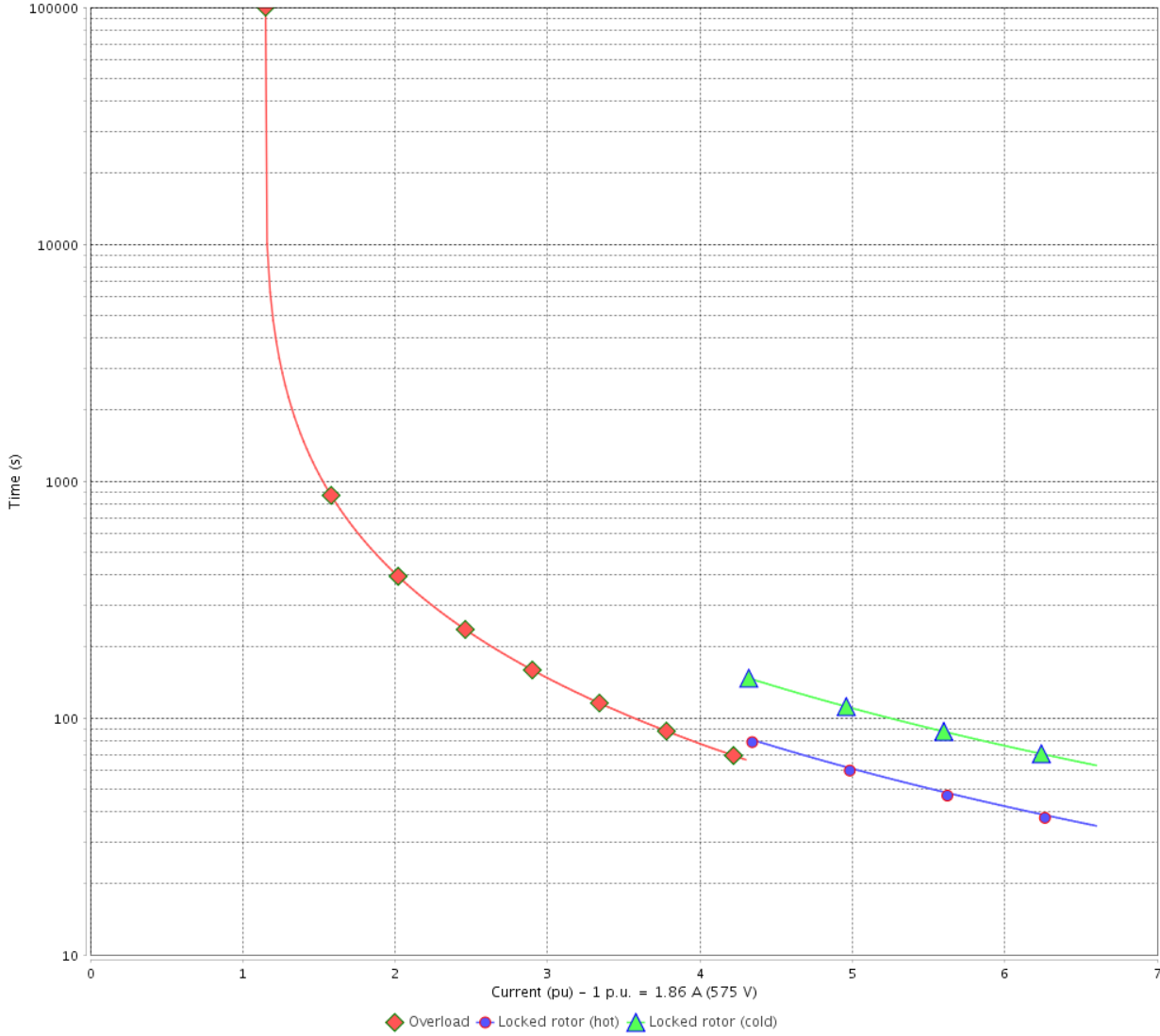
THERMAL LIMIT CURVE

Three Phase Induction Motor - Squirrel Cage



Customer : _____

THERMAL LIMIT CURVE



Rev.	Changes Summary	Performed	Checked	Date
Performed by			Page 6 / 7	Revision
Checked by				
Date				

VFD OPERATION CURVE

Three Phase Induction Motor - Squirrel Cage

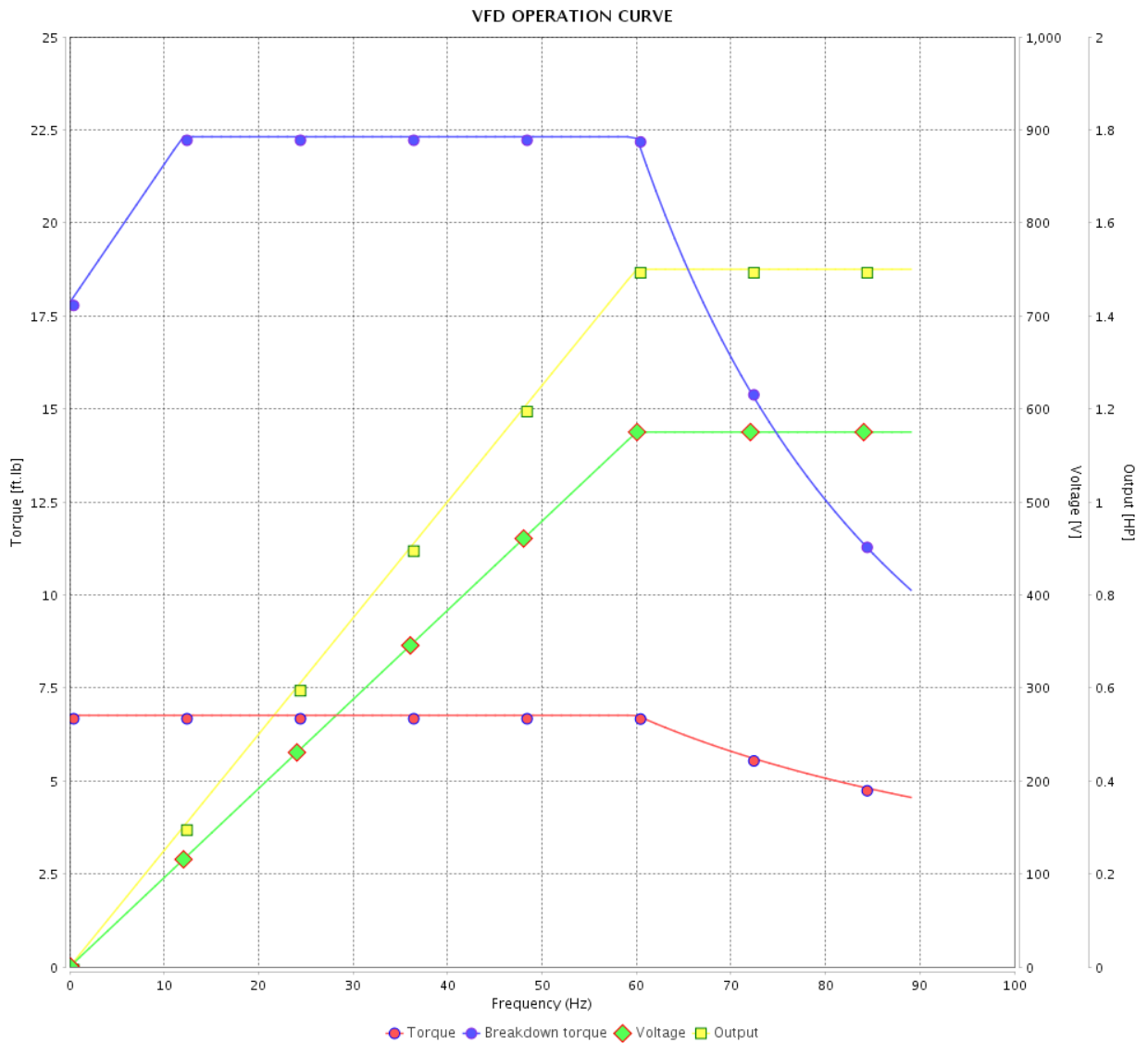


Customer :

Product line : NEMA Premium Efficiency Three-Phase

Product code : 14458609

Catalog # : 00152XT3H182T

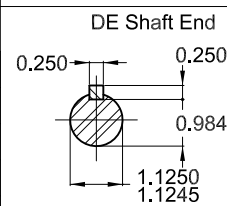
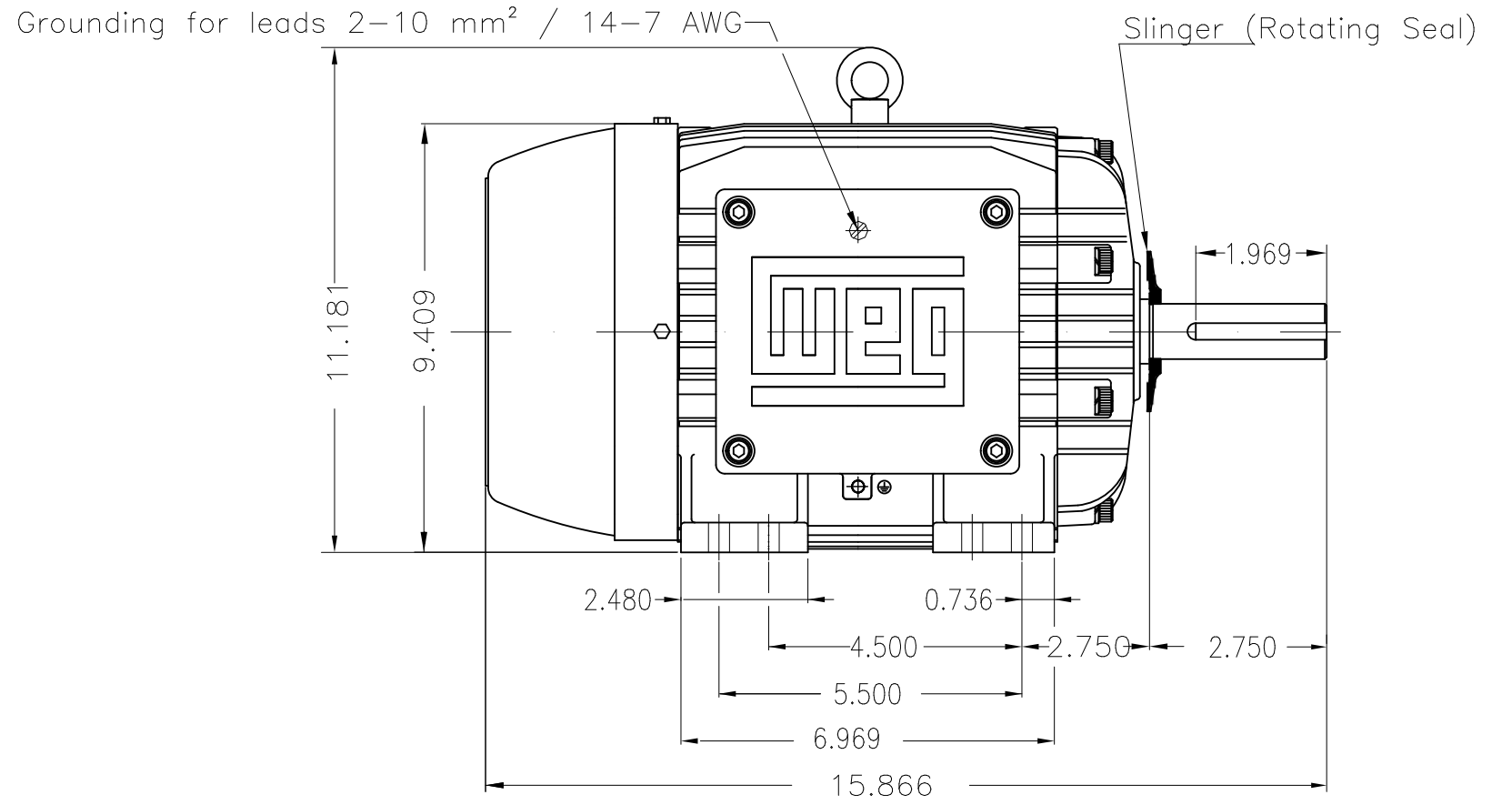
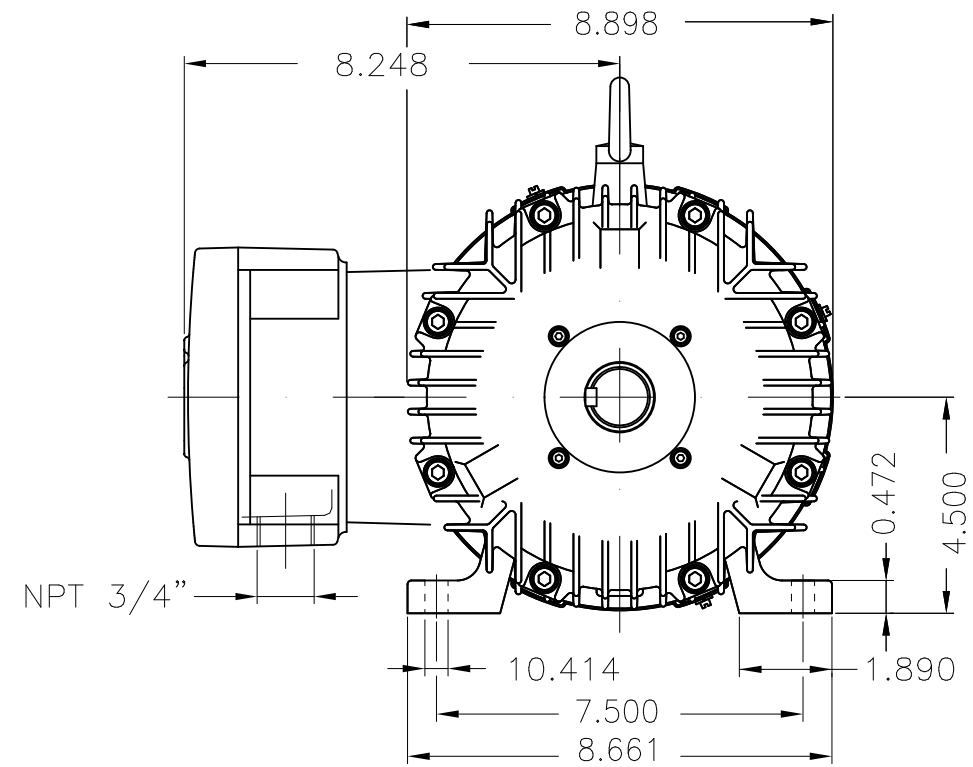


Performance : 575 V 60 Hz 6P

Rated current : 1.86 A
 LRC : 6.6
 Rated torque : 6.76 ft.lb
 Locked rotor torque : 229 %
 Breakdown torque : 330 %
 Rated speed : 1165 rpm

Moment of inertia (J) : 0.4212 sq.ft.lb
 Duty cycle : Cont.(S1)
 Insulation class : F
 Service factor : 1.15
 Temperature rise : 80 K
 Design : B

Rev.	Changes Summary	Performed	Checked	Date
Performed by				Page 7 / 7
Checked by				
Date	12/04/2022			



Packing - crate
 Color RAL 5009
 Painting plan 202P
 Mounting NEMA F-1
 Mounting B3R(D)

1.5 HP 06 Poles 60 Hz

Dimensions in inches

ECM	LOC	SUMMARY OF MODIFICATIONS	EXECUTED	CHECKED	RELEASED	DATE	VER
EXECUTED	PIRWBUSER	THREE PH. MOTOR EXPLOSION PROOF PREM. EFF.					
CHECKED		FRAME 182/4T IP55 TEFC					
RELEASED							
REL DT.	WMO	Jaragua do Sul	Product Engineering				

PREVIEW
 WDD



SHEET 1 / 1