

# DATA SHEET



## Three Phase Induction Motor - Squirrel Cage

Customer :				
Product line	: NEMA Premium Efficiency Three-Phase			
Product code :	14495395			
Catalog # :	00156XT3H143T			
Frame : 143/5T Output : 1.5 HP (1.1 kW) Poles : 2 Frequency : 60 Hz Rated voltage : 575 V Rated current : 1.64 A L. R. Amperes : 15.1 A LRC : 9.2x(Code M) No load current : 0.800 A Rated speed : 3500 rpm Slip : 2.78 % Rated torque : 2.25 ft.lb Locked rotor torque : 340 % Breakdown torque : 440 % Insulation class : F Service factor : 1.15 Moment of inertia (J) : 0.0413 sq.ft.lb Design : B	Locked rotor time : 36s (cold) 20s (hot) Temperature rise : 80 K Duty cycle : Cont.(S1) Ambient temperature : -20°C to +40°C Altitude : 1000 m.a.s.l. Protection degree : IP55 Cooling method : IC411 - TEFC Mounting : F-1 Rotation <sup>1</sup> : Both (CW and CCW) Noise level <sup>2</sup> : 68.0 dB(A) Starting method : Direct On Line Approx. weight <sup>3</sup> : 69.8 lb			
Output	25%    50%    75%    100%			
Efficiency (%)	76.9    78.5    82.5    84.0			
Power Factor	0.38    0.62    0.73    0.80			
Foundation loads				
Max. traction	: 51 lb			
Max. compression	: 121 lb			
Bearing type	: <u>Drive end</u> 6205 2RS <u>Non drive end</u> 6204 2RS			
Sealing	: Oil Seal    Lip Seal			
Lubrication interval	: -    -			
Lubricant amount	: -    -			
Lubricant type	: Mobil Polyrex EM			
Notes				
This revision replaces and cancel the previous one, which must be eliminated. (1) Looking the motor from the shaft end. (2) Measured at 1m and with tolerance of +3dB(A). (3) Approximate weight subject to changes after manufacturing process. (4) At 100% of full load.				
These are average values based on tests with sinusoidal power supply, subject to the tolerances stipulated in NEMA MG-1.				
Rev.	Changes Summary	Performed	Checked	Date
Performed by				
Checked by			Page	Revision
Date	12/04/2022		1 / 7	

# DATA SHEET

## Three Phase Induction Motor - Squirrel Cage



Customer : \_\_\_\_\_

### Thermal protection

ID	Application	Type	Quantity	Sensing Temperature
1	Winding	Thermostat - 2 wires	1 x Phase	155 °C

Rev.	Changes Summary	Performed	Checked	Date
Performed by				
Checked by			Page	Revision
Date	12/04/2022		2 / 7	

# TORQUE AND CURRENT VS SPEED CURVE



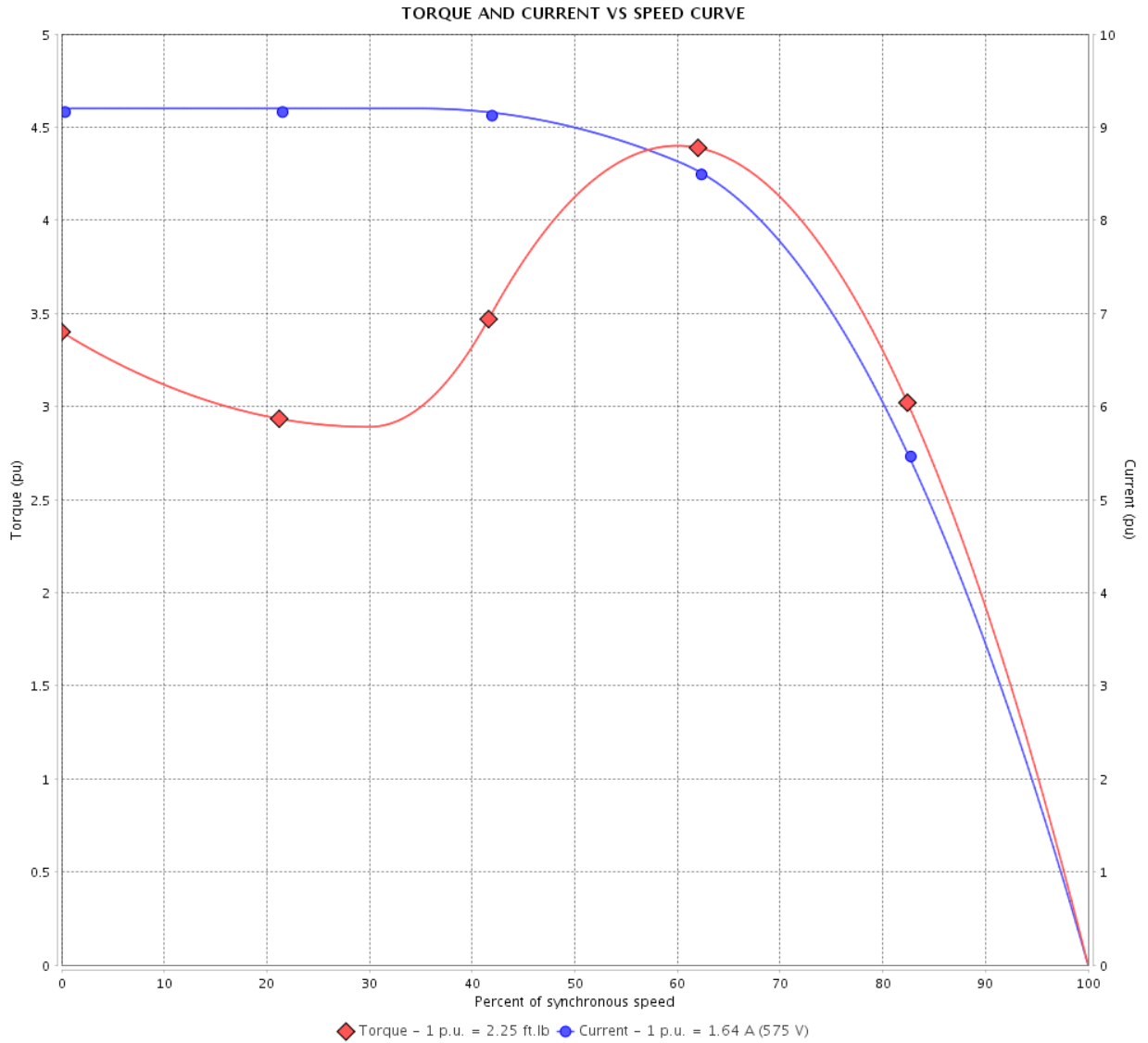
## Three Phase Induction Motor - Squirrel Cage

Customer :

Product line : NEMA Premium Efficiency Three-Phase

Product code : 14495395

Catalog # : 00156XT3H143T



Performance : 575 V 60 Hz 2P

Rated current	: 1.64 A	Moment of inertia (J)	: 0.0413 sq.ft.lb
LRC	: 9.2	Duty cycle	: Cont.(S1)
Rated torque	: 2.25 ft.lb	Insulation class	: F
Locked rotor torque	: 340 %	Service factor	: 1.15
Breakdown torque	: 440 %	Temperature rise	: 80 K
Rated speed	: 3500 rpm	Design	: B

Locked rotor time : 36s (cold) 20s (hot)

Rev.	Changes Summary	Performed	Checked	Date
Performed by			Page	Revision
Checked by			3 / 7	
Date	12/04/2022			

# LOAD PERFORMANCE CURVE

Three Phase Induction Motor - Squirrel Cage



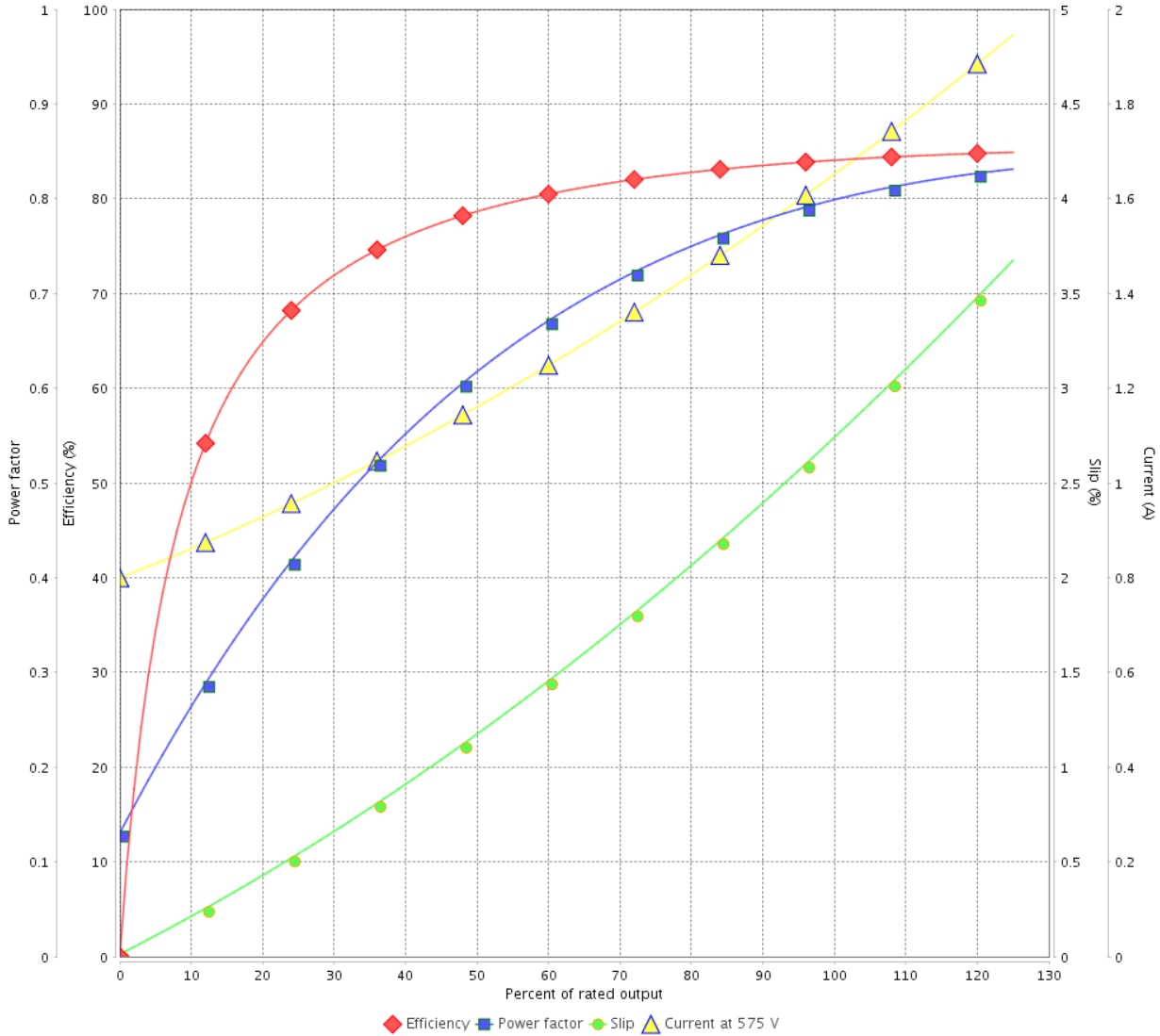
Customer :

Product line : NEMA Premium Efficiency Three-Phase

Product code : 14495395

Catalog # : 00156XT3H143T

LOAD PERFORMANCE CURVE



Performance : 575 V 60 Hz 2P

Rated current : 1.64 A  
 LRC : 9.2  
 Rated torque : 2.25 ft.lb  
 Locked rotor torque : 340 %  
 Breakdown torque : 440 %  
 Rated speed : 3500 rpm

Moment of inertia (J) : 0.0413 sq.ft.lb  
 Duty cycle : Cont.(S1)  
 Insulation class : F  
 Service factor : 1.15  
 Temperature rise : 80 K  
 Design : B

Rev.	Changes Summary	Performed	Checked	Date
Performed by		Page		Revision
Checked by		4 / 7		
Date	12/04/2022			

# THERMAL LIMIT CURVE



## Three Phase Induction Motor - Squirrel Cage

Customer :

Product line : NEMA Premium Efficiency Three-Phase  
 Product code : 14495395  
 Catalog # : 00156XT3H143T

Performance : 575 V 60 Hz 2P

Rated current : 1.64 A	Moment of inertia (J) : 0.0413 sq.ft.lb
LRC : 9.2	Duty cycle : Cont.(S1)
Rated torque : 2.25 ft.lb	Insulation class : F
Locked rotor torque : 340 %	Service factor : 1.15
Breakdown torque : 440 %	Temperature rise : 80 K
Rated speed : 3500 rpm	Design : B

Heating constant

Cooling constant

Rev.	Changes Summary	Performed	Checked	Date
Performed by			Page 5 / 7	Revision
Checked by				
Date	12/04/2022			

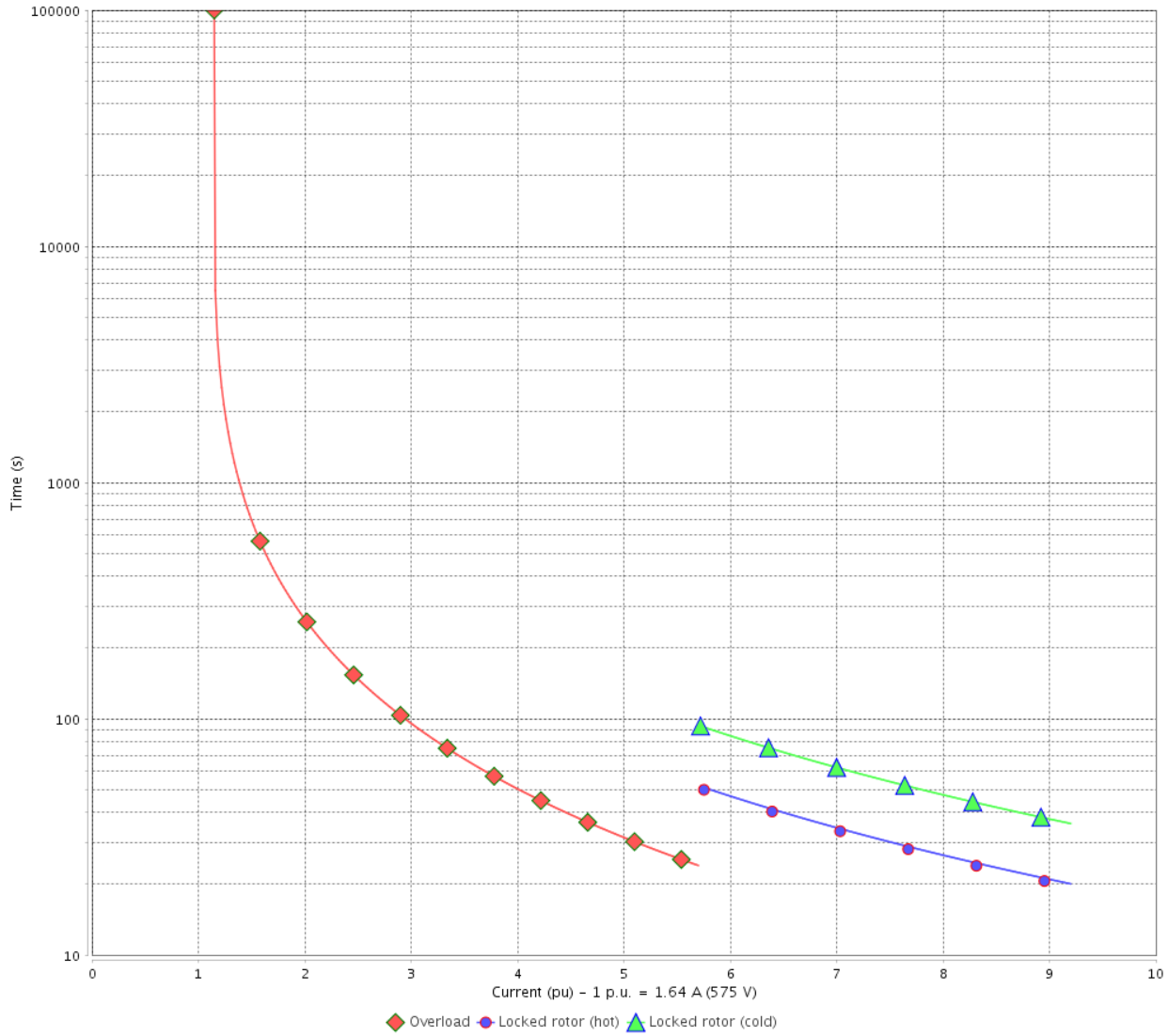
# THERMAL LIMIT CURVE

Three Phase Induction Motor - Squirrel Cage



Customer : \_\_\_\_\_

THERMAL LIMIT CURVE



Rev.	Changes Summary	Performed	Checked	Date
Performed by			Page 6 / 7	Revision
Checked by				
Date	12/04/2022			

# VFD OPERATION CURVE

Three Phase Induction Motor - Squirrel Cage

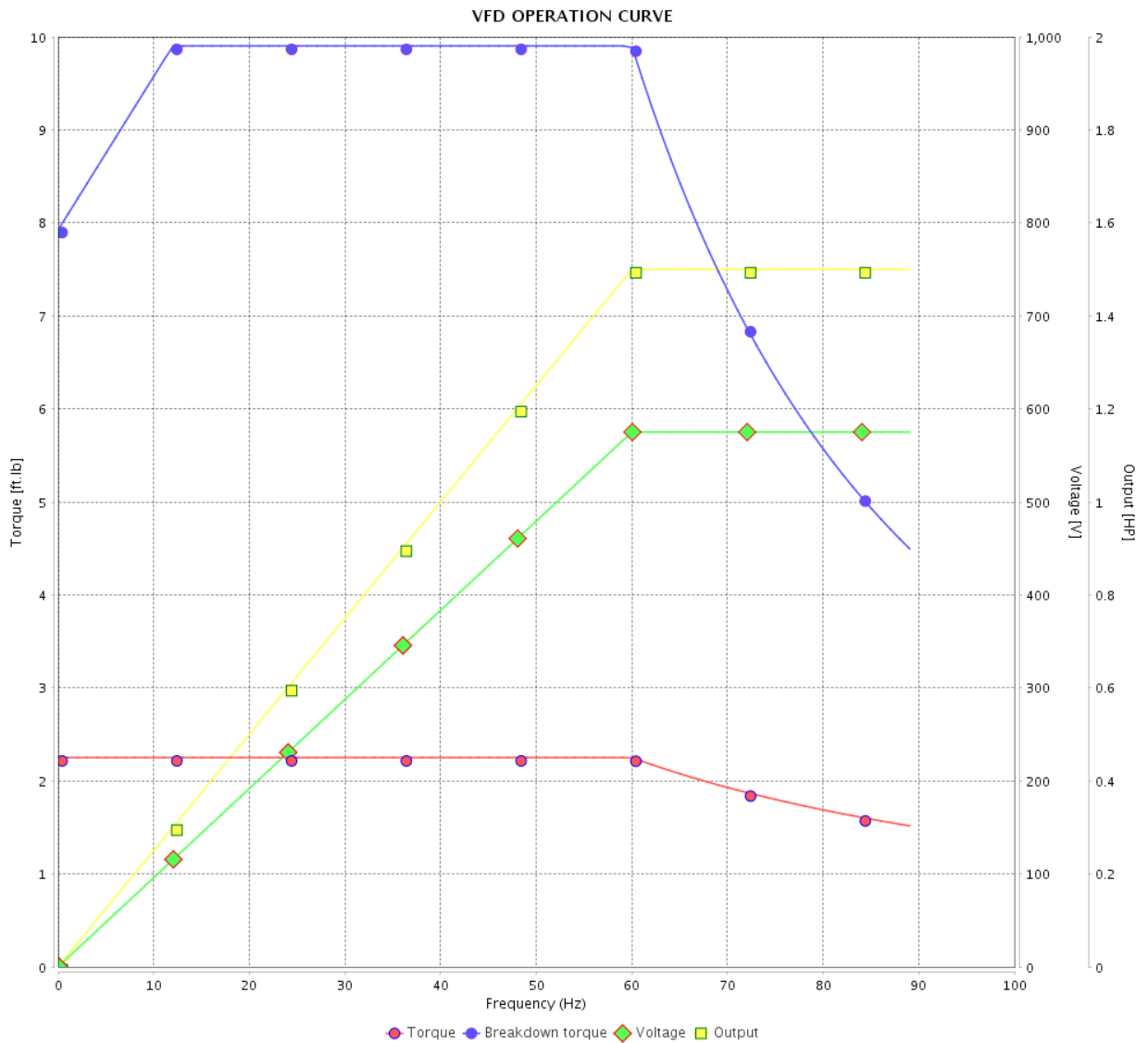


Customer :

Product line : NEMA Premium Efficiency Three-Phase

Product code : 14495395

Catalog # : 00156XT3H143T

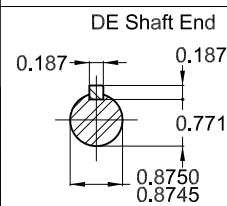
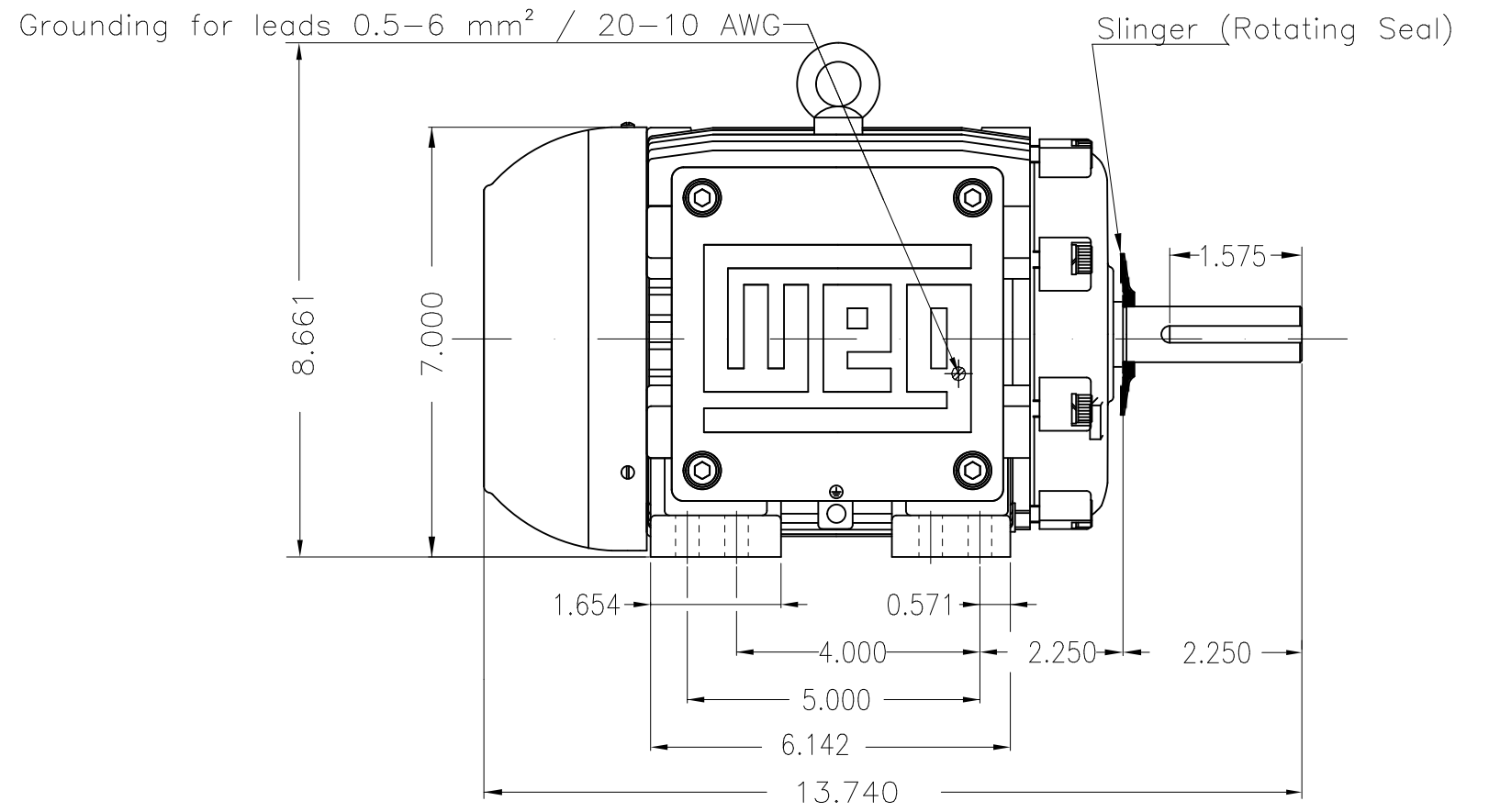
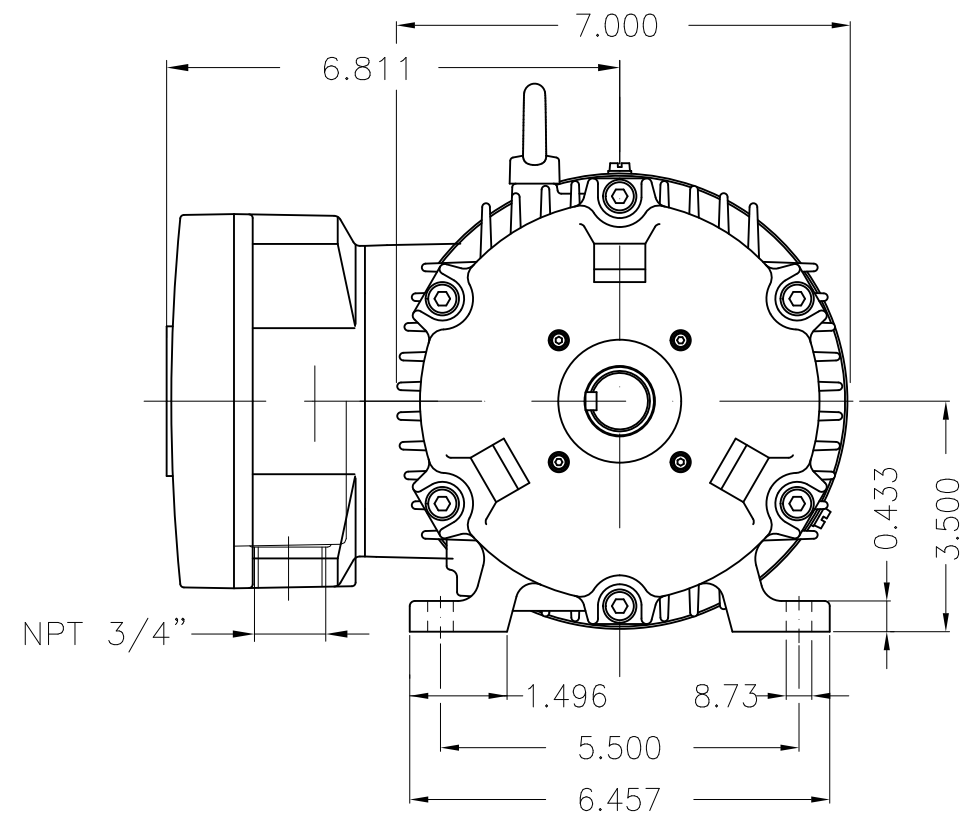


Performance : 575 V 60 Hz 2P

Rated current : 1.64 A  
 LRC : 9.2  
 Rated torque : 2.25 ft.lb  
 Locked rotor torque : 340 %  
 Breakdown torque : 440 %  
 Rated speed : 3500 rpm

Moment of inertia (J) : 0.0413 sq.ft.lb  
 Duty cycle : Cont.(S1)  
 Insulation class : F  
 Service factor : 1.15  
 Temperature rise : 80 K  
 Design : B

Rev.	Changes Summary	Performed	Checked	Date
Performed by				Page 7 / 7
Checked by				
Date	12/04/2022			



Color RAL 5009  
Painting plan 202P  
Mounting NEMA F-1  
Mounting B3R(D)

1.5 HP 02 Poles 60 Hz

Dimensions in inches

ECM	LOC	SUMMARY OF MODIFICATIONS	EXECUTED	CHECKED	RELEASED	DATE	VER
EXECUTED	PIRWBUSER	THREE PH. MOTOR EXPLOSION PROOF PREM. EFF.					
CHECKED		FRAME 143/5T IP55 TEFC					
RELEASED							
REL DT.	WMO	Jaragua do Sul	Product Engineering				

**PREVIEW**  
WDD



SHEET 1 / 1



MADE IN BRAZIL


**W21X NEMA**  
**Premium**

14495395



LISTED

CC029A

*Inverter Duty Motor*  
*Severe Duty*

MODEL 00156XT3H143T

PH 3 | FR 143/5T

HP(kW) 1.5(1.1)

HZ 60

IP55

V 575

A 1.64

RPM 3500

NEMA NOM EFF 84.0%

PF 0.8

SFA 1.89

DES B

INS CL F  $\Delta$ T 80 K | SF 1.15

ENCL TEFC

DUTY CONT.

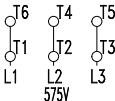
CODE M

ALT 1000

m.a.s.l.

AMB 40°C

AMB 55°C SF1.0



→ 6205-2RS MOBIL POLYREX EM

→ 6204-2RS

71 Lbs


 C US  
 Energy Verified

TEMP CODE T3C

CSA/UL: Class I - Div. 1 - Groups C and D

CSA: Class II - Div. 1 - Groups F and G

CSA: Class I - Zone 1 - IIB

EXPLOSION PROOF MOTOR

FOR USE ON VPWM VFD 1000:1VT, 20:1CT, 1.0SF, T3C, AMB 40°C.