

DATA SHEET



Three Phase Induction Motor - Squirrel Cage

Customer	:					
Product line	:	Premium Efficiency Three-Phase	Product code :	12809698		
			Catalog # :	00158OT3H56CFL-S		
Frame	:	56C	Locked rotor time	:	25s (cold) 14s (hot)	
Output	:	1.5 HP (1.1 kW)	Temperature rise	:	80 K	
Poles	:	4	Duty cycle	:	Cont.(S1)	
Frequency	:	60 Hz	Ambient temperature	:	-20°C to +40°C	
Rated voltage	:	575 V	Altitude	:	1000 m.a.s.l.	
Rated current	:	1.68 A	Cooling method	:	IC01 - ODP	
L. R. Amperes	:	14.8 A	Mounting	:	F-1	
LRC	:	8.8x(Code L)	Rotation ¹	:	Both (CW and CCW)	
No load current	:	1.04 A	Noise level ²	:	52.0 dB(A)	
Rated speed	:	1760 rpm	Starting method	:	Direct On Line	
Slip	:	2.22 %	Approx. weight ³	:	36.5 lb	
Rated torque	:	4.48 ft.lb				
Locked rotor torque	:	290 %				
Breakdown torque	:	350 %				
Insulation class	:	F				
Service factor	:	1.15				
Moment of inertia (J)	:	0.1296 sq.ft.lb				
Design	:	A				
Output	25%	50%	75%	100%	Foundation loads	
Efficiency (%)	82.9	84.0	85.5	86.5	Max. traction	: 135 lb
Power Factor	0.30	0.53	0.66	0.76	Max. compression	: 172 lb
Bearing type	:	<u>Drive end</u> 6204 ZZ	<u>Non drive end</u> 6202 ZZ			
Sealing	:	Without Bearing Seal	Without Bearing Seal			
Lubrication interval	:	-	-			
Lubricant amount	:	-	-			
Lubricant type	:	Mobil Polyrex EM				
Notes						
This revision replaces and cancel the previous one, which must be eliminated. (1) Looking the motor from the shaft end. (2) Measured at 1m and with tolerance of +3dB(A). (3) Approximate weight subject to changes after manufacturing process. (4) At 100% of full load.			These are average values based on tests with sinusoidal power supply, subject to the tolerances stipulated in NEMA MG-1.			
Rev.	Changes Summary			Performed	Checked	Date
Performed by						
Checked by					Page	Revision
Date	12/04/2022				1 / 5	

TORQUE AND CURRENT VS SPEED CURVE

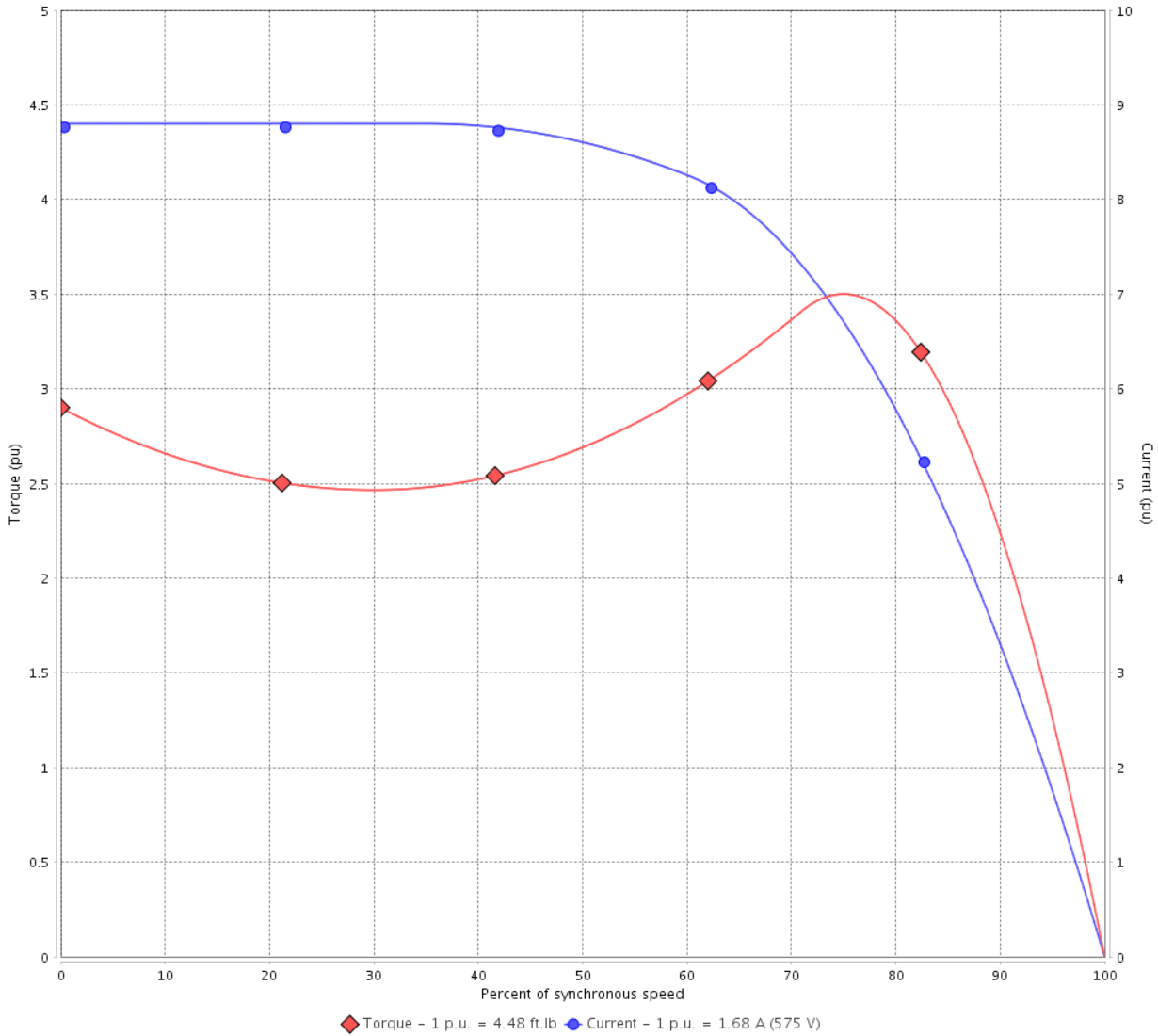
Three Phase Induction Motor - Squirrel Cage



Customer :

Product line : Premium Efficiency Three-Phase Product code : 12809698
 Catalog # : 001580T3H56CFL-S

TORQUE AND CURRENT VS SPEED CURVE



Performance : 575 V 60 Hz 4P

Rated current	: 1.68 A	Moment of inertia (J)	: 0.1296 sq.ft.lb
LRC	: 8.8	Duty cycle	: Cont.(S1)
Rated torque	: 4.48 ft.lb	Insulation class	: F
Locked rotor torque	: 290 %	Service factor	: 1.15
Breakdown torque	: 350 %	Temperature rise	: 80 K
Rated speed	: 1760 rpm	Design	: A

Locked rotor time : 25s (cold) 14s (hot)

Rev.	Changes Summary	Performed	Checked	Date
Performed by		Page		Revision
Checked by		2 / 5		
Date	12/04/2022			

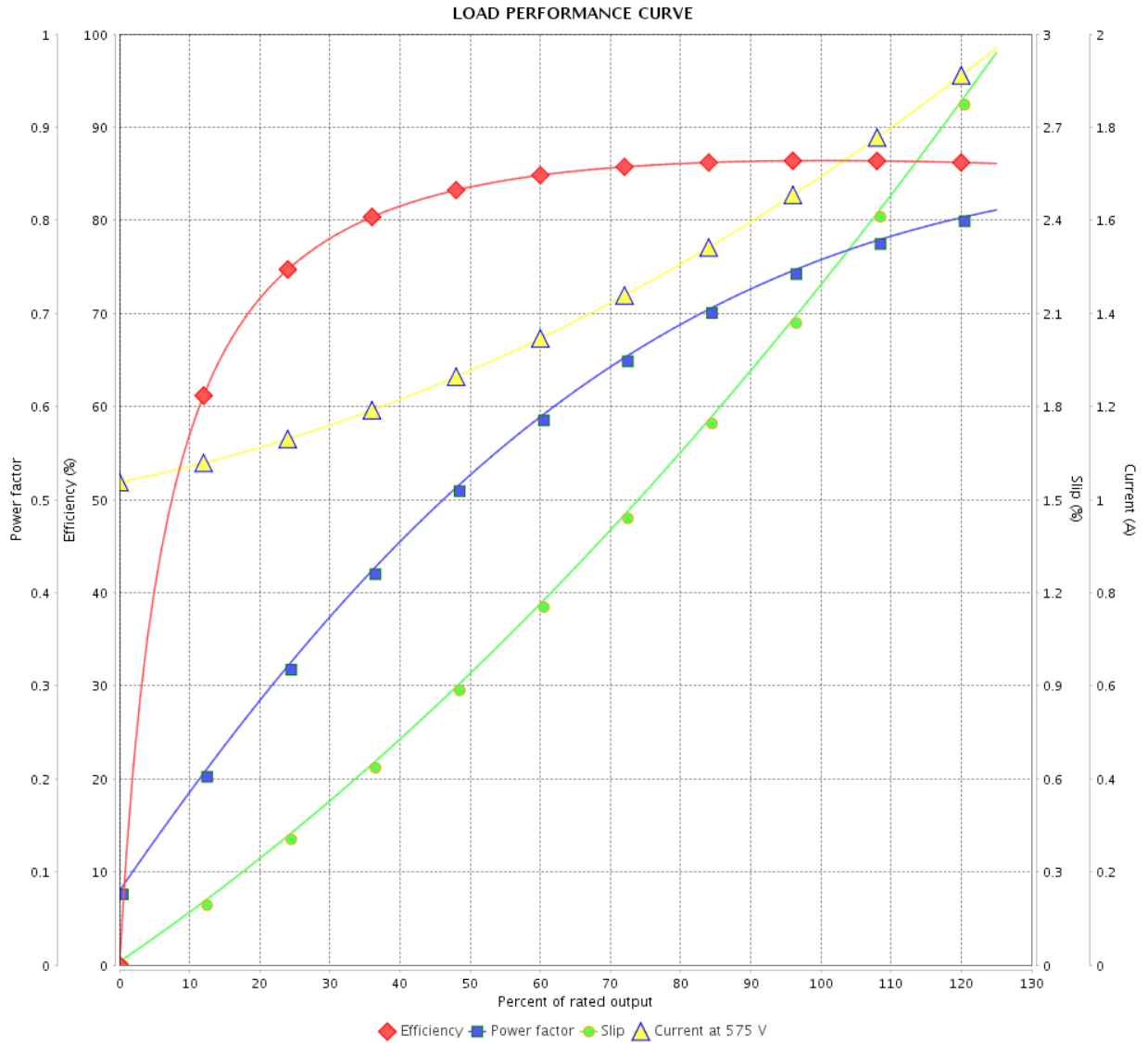
LOAD PERFORMANCE CURVE

Three Phase Induction Motor - Squirrel Cage



Customer : _____

Product line : Premium Efficiency Three-Phase Product code : 12809698
 Catalog # : 00158OT3H56CFL-S



Performance : 575 V 60 Hz 4P

Rated current	: 1.68 A	Moment of inertia (J)	: 0.1296 sq.ft.lb
LRC	: 8.8	Duty cycle	: Cont.(S1)
Rated torque	: 4.48 ft.lb	Insulation class	: F
Locked rotor torque	: 290 %	Service factor	: 1.15
Breakdown torque	: 350 %	Temperature rise	: 80 K
Rated speed	: 1760 rpm	Design	: A

Rev.	Changes Summary	Performed	Checked	Date
Performed by			Page 3 / 5	Revision
Checked by				
Date	12/04/2022			

THERMAL LIMIT CURVE

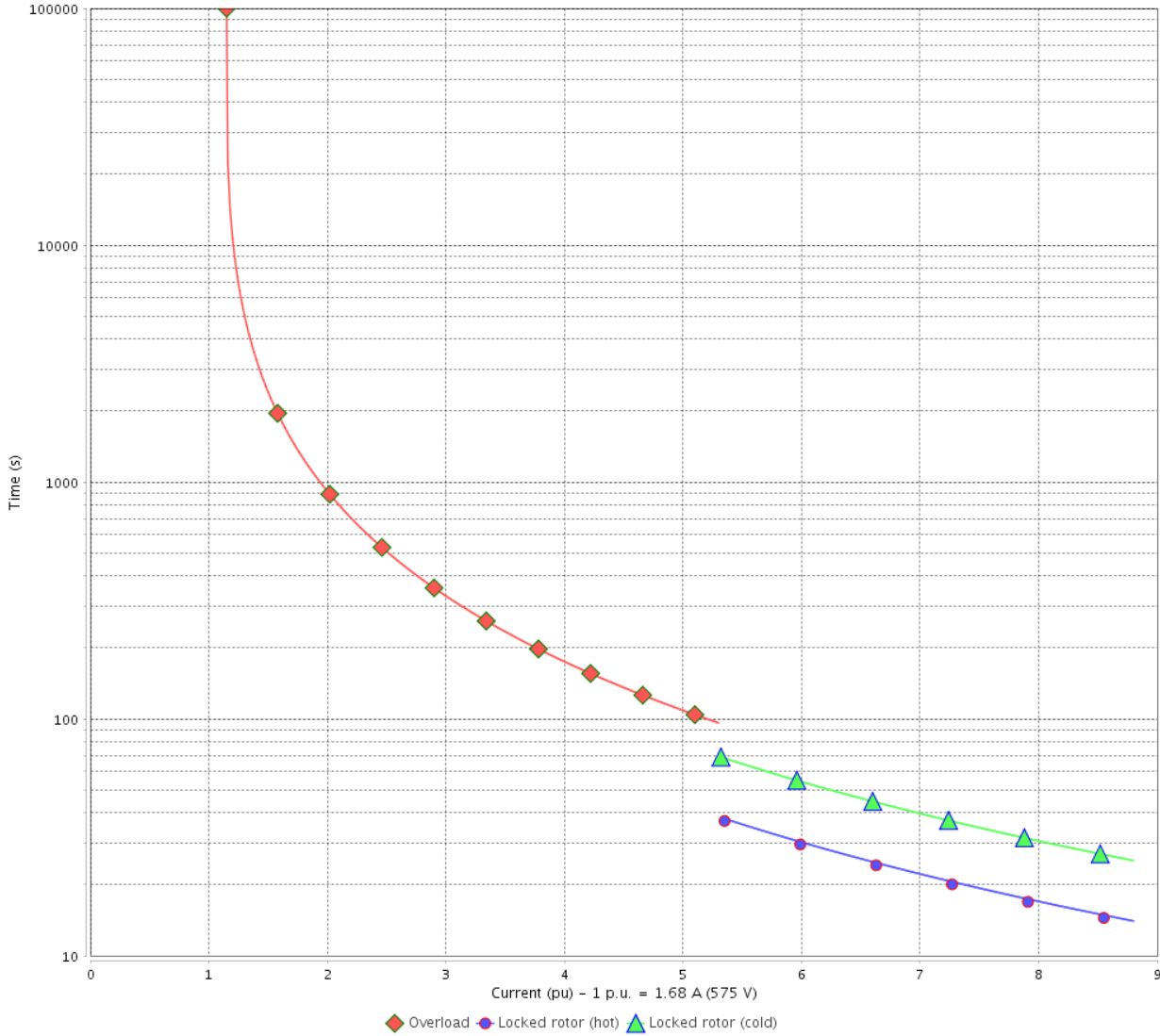
Three Phase Induction Motor - Squirrel Cage



Customer :

Product line : Premium Efficiency Three-Phase Product code : 12809698
 Catalog # : 00158OT3H56CFL-S

THERMAL LIMIT CURVE



Performance : 575 V 60 Hz 4P

Rated current	: 1.68 A	Moment of inertia (J)	: 0.1296 sq.ft.lb
LRC	: 8.8	Duty cycle	: Cont.(S1)
Rated torque	: 4.48 ft.lb	Insulation class	: F
Locked rotor torque	: 290 %	Service factor	: 1.15
Breakdown torque	: 350 %	Temperature rise	: 80 K
Rated speed	: 1760 rpm	Design	: A

Heating constant

Cooling constant

Rev.	Changes Summary	Performed	Checked	Date
Performed by			Page 4 / 5	Revision
Checked by				
Date	12/04/2022			

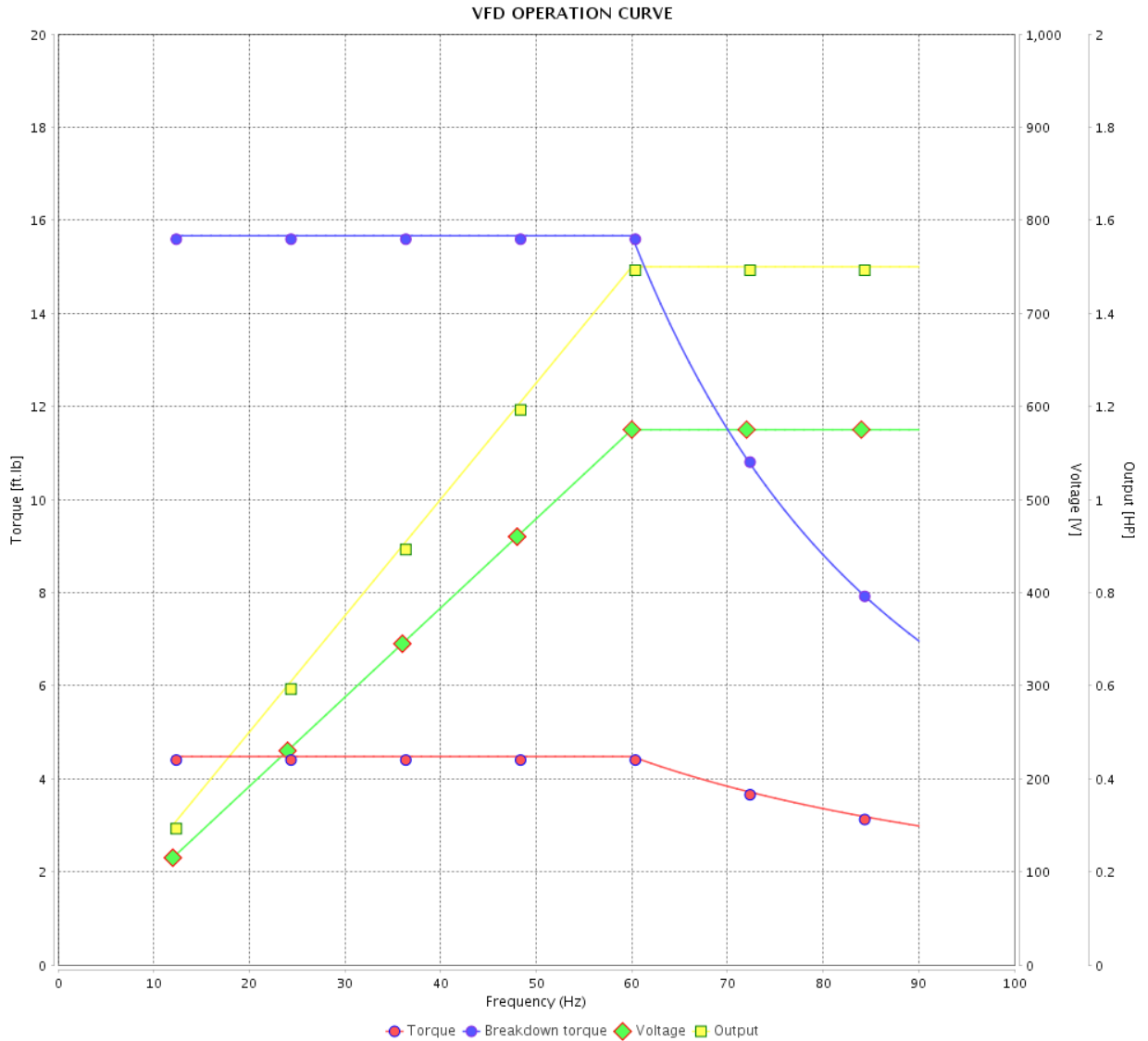
VFD OPERATION CURVE

Three Phase Induction Motor - Squirrel Cage



Customer :

Product line : Premium Efficiency Three-Phase Product code : 12809698
 Catalog # : 00158OT3H56CFL-S



Performance : 575 V 60 Hz 4P

Rated current : 1.68 A
 LRC : 8.8
 Rated torque : 4.48 ft.lb
 Locked rotor torque : 290 %
 Breakdown torque : 350 %
 Rated speed : 1760 rpm

Moment of inertia (J) : 0.1296 sq.ft.lb
 Duty cycle : Cont.(S1)
 Insulation class : F
 Service factor : 1.15
 Temperature rise : 80 K
 Design : A

Rev.	Changes Summary	Performed	Checked	Date
Performed by			Page	Revision
Checked by				
Date				

1 2 3 4 5 6

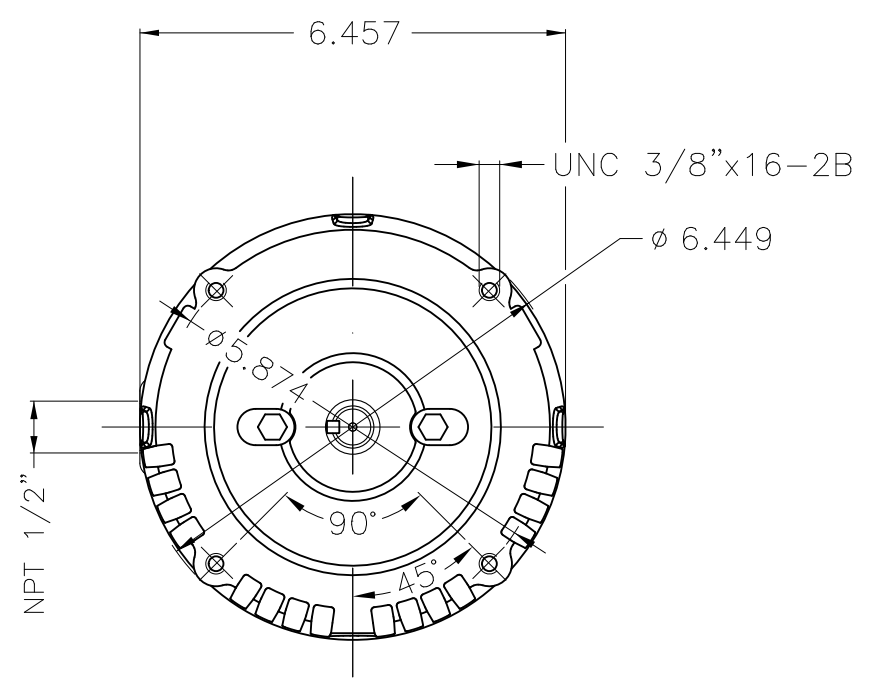
A

B

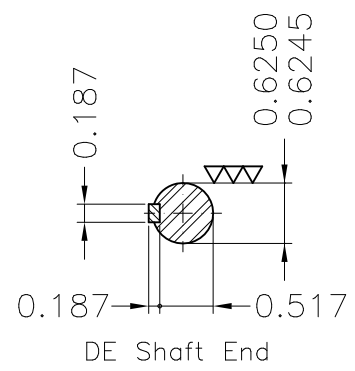
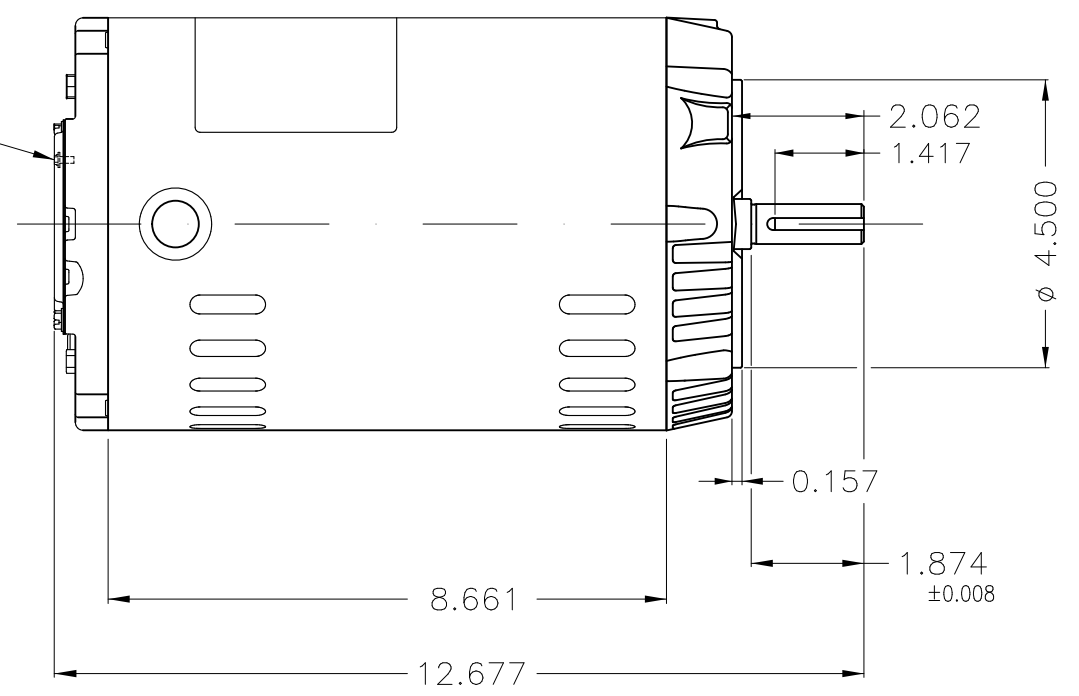
C

D

E



Grounding



Dimensions in inches

Without coating										
Mounting F-1/B14R(D)										
ECM	LOC	SUMMARY OF MODIFICATIONS				EXECUTED	CHECKED	RELEASED	DATE	VER
EXECUTED	PIRWUSER	THREE PH. MOTOR ROLLED STEEL PREM. EFF.					PREVIEW WDD			
CHECKED		FRAME 56C IP21 ODP								
RELEASED										
REL DT.		WMO	Jaragua do Sul	Product Engineering	SHEET	1 / 1				

1.5 HP 04 Poles 60 Hz

A

XME A3



NEMA
Premium



MADE IN MEXICO

MAT: 12809698

W01.T00IC0X0X

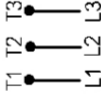
MODEL 00158OT3H56CFL-S

10MAR2022 B/N:

PH 3	Hz 60	HP 1.5
FR 56C		KW 1.1
DUTY CONT.		V 575
ALT 1000 m.a.s.l		A 1.68
INS CL F AT 80K		SFA 1.93
AMB 40°C	DES A	SF 1.15
ENCL ODP	CODE L	PF 0.76
		RPM 1760
		NEMA NOM. EFF 86.5%

Inverter duty motor For use on VPWM 1000:1 VT, 5:1 CT

DE 6204-ZZ	ODE 6202-ZZ	MOBIL POLYREX EM
------------	-------------	------------------



T1-BLU

T2-WHT

T3-ORG



INTERCHANGE ANY TWO LINE WIRES TO REVERSE THE ROTATION

WARNING: Motor must be grounded in accordance with local and national electrical codes to prevent serious electrical shocks. Disconnect power source before servicing unit.



AVERTISSEMENT: Le moteur doit être mis à la terre

conformément aux codes électriques locaux et nationaux afin d'éviter tout choc électrique grave. Déconnectez l'alimentation avant l'entretien de la machine.

