



# TORQUE AND CURRENT VS SPEED CURVE

Three Phase Induction Motor - Squirrel Cage



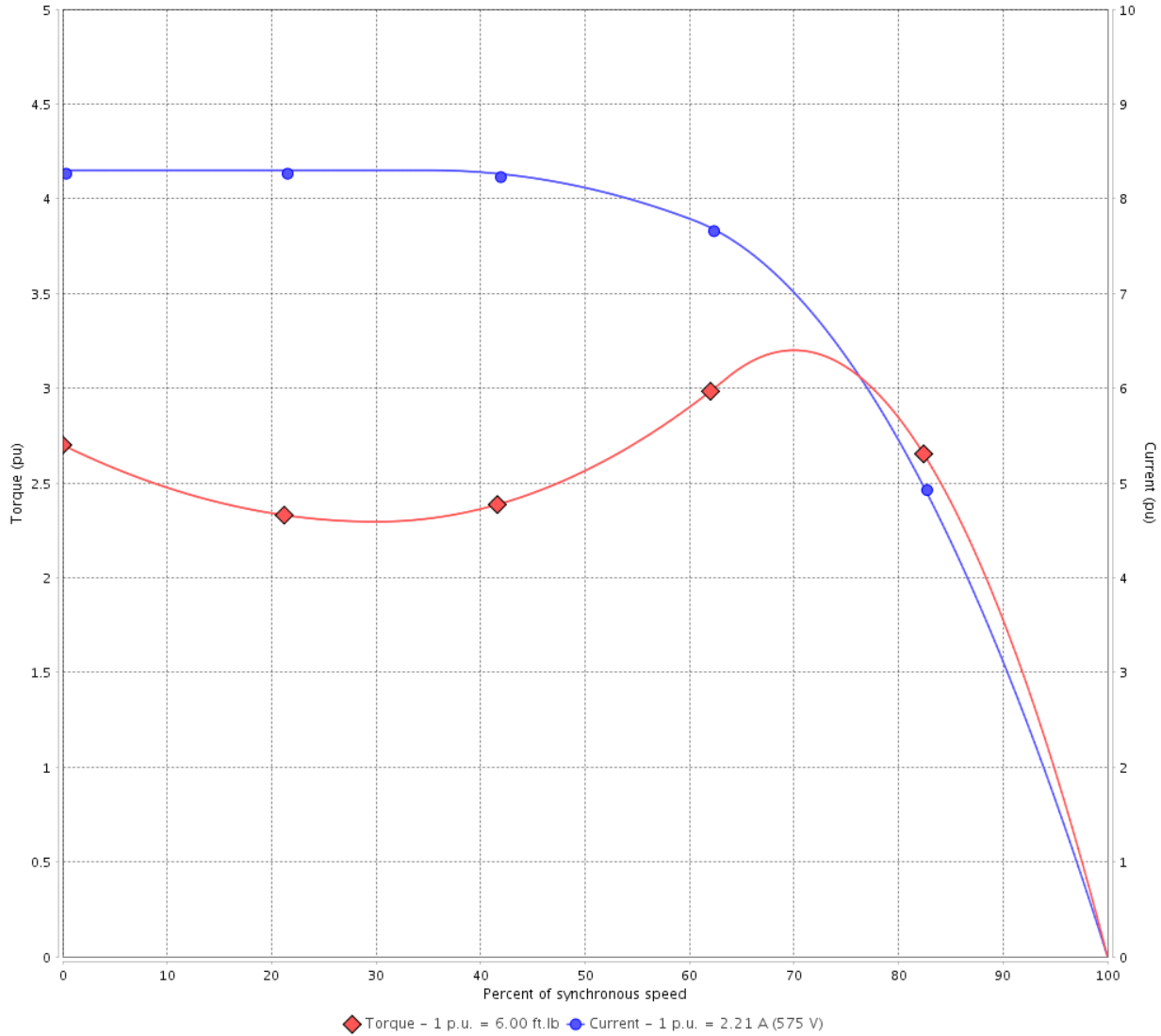
Customer :

Product line : NEMA Premium Efficiency Three-Phase

Product code : 15459789

Catalog # : 00218ST3HIER145TC-W2

TORQUE AND CURRENT VS SPEED CURVE



Performance : 575 V 60 Hz 4P

Rated current	: 2.21 A	Moment of inertia (J)	: 0.1561 sq.ft.lb
LRC	: 8.3	Duty cycle	: Cont.(S1)
Rated torque	: 6.00 ft.lb	Insulation class	: F
Locked rotor torque	: 270 %	Service factor	: 1.25
Breakdown torque	: 320 %	Temperature rise	: 80 K
Rated speed	: 1750 rpm	Design	: B

Locked rotor time : 23s (cold) 13s (hot)

Rev.	Changes Summary	Performed	Checked	Date
Performed by			Page 2 / 6	Revision
Checked by				
Date	01/06/2022			

# LOAD PERFORMANCE CURVE

## Three Phase Induction Motor - Squirrel Cage

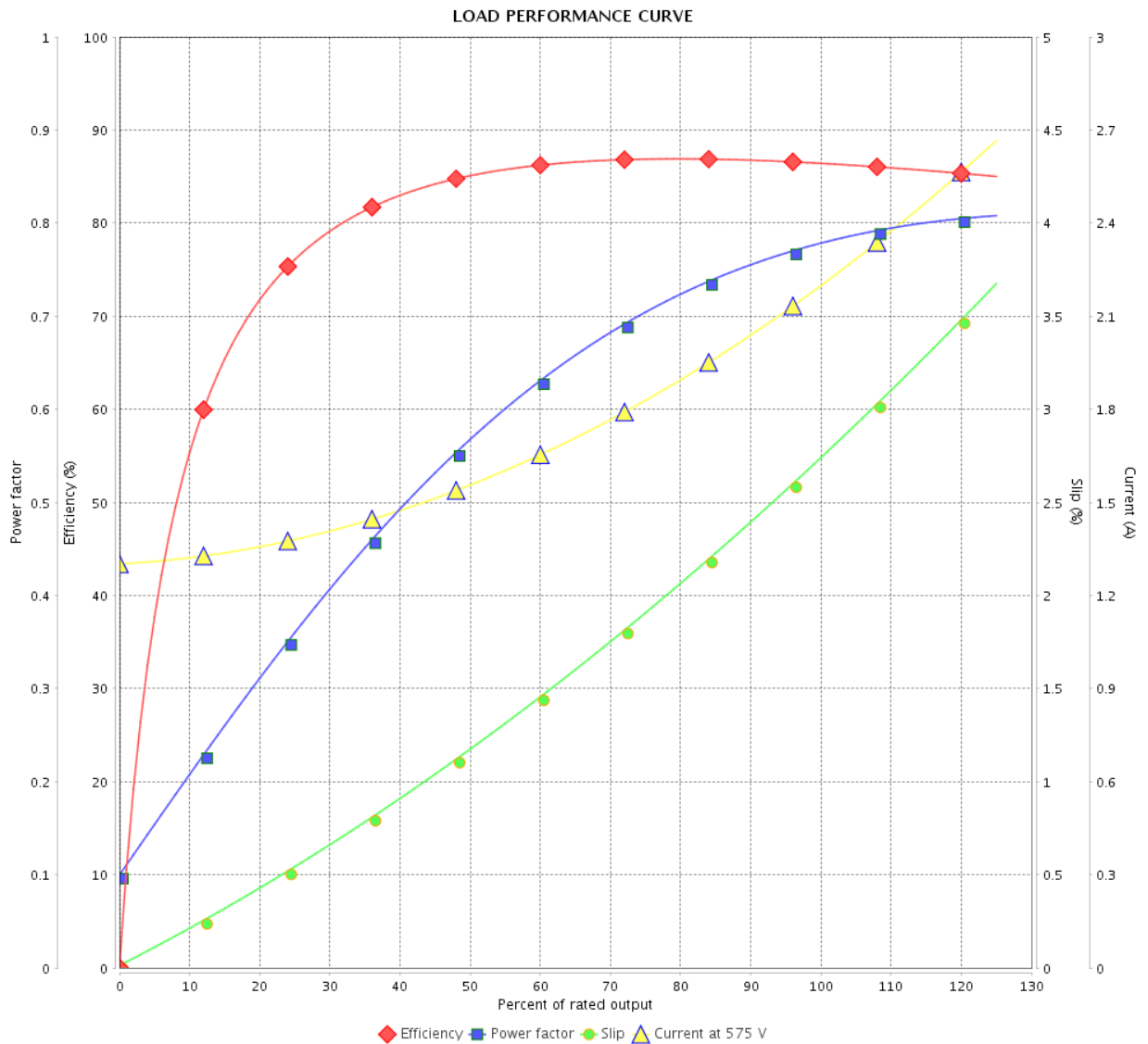


Customer : \_\_\_\_\_

Product line : NEMA Premium Efficiency Three-Phase

Product code : 15459789

Catalog # : 00218ST3HIER145TC-W2



Performance : 575 V 60 Hz 4P

Rated current : 2.21 A  
 LRC : 8.3  
 Rated torque : 6.00 ft.lb  
 Locked rotor torque : 270 %  
 Breakdown torque : 320 %  
 Rated speed : 1750 rpm

Moment of inertia (J) : 0.1561 sq.ft.lb  
 Duty cycle : Cont.(S1)  
 Insulation class : F  
 Service factor : 1.25  
 Temperature rise : 80 K  
 Design : B

Rev.	Changes Summary	Performed	Checked	Date
Performed by		Page		Revision
Checked by		3 / 6		
Date		01/06/2022		

# THERMAL LIMIT CURVE



## Three Phase Induction Motor - Squirrel Cage

Customer :

Product line : NEMA Premium Efficiency Three-Phase  
 Product code : 15459789  
 Catalog # : 00218ST3HIER145TC-W2

Performance : 575 V 60 Hz 4P

Rated current : 2.21 A	Moment of inertia (J) : 0.1561 sq.ft.lb
LRC : 8.3	Duty cycle : Cont.(S1)
Rated torque : 6.00 ft.lb	Insulation class : F
Locked rotor torque : 270 %	Service factor : 1.25
Breakdown torque : 320 %	Temperature rise : 80 K
Rated speed : 1750 rpm	Design : B

Heating constant

Cooling constant

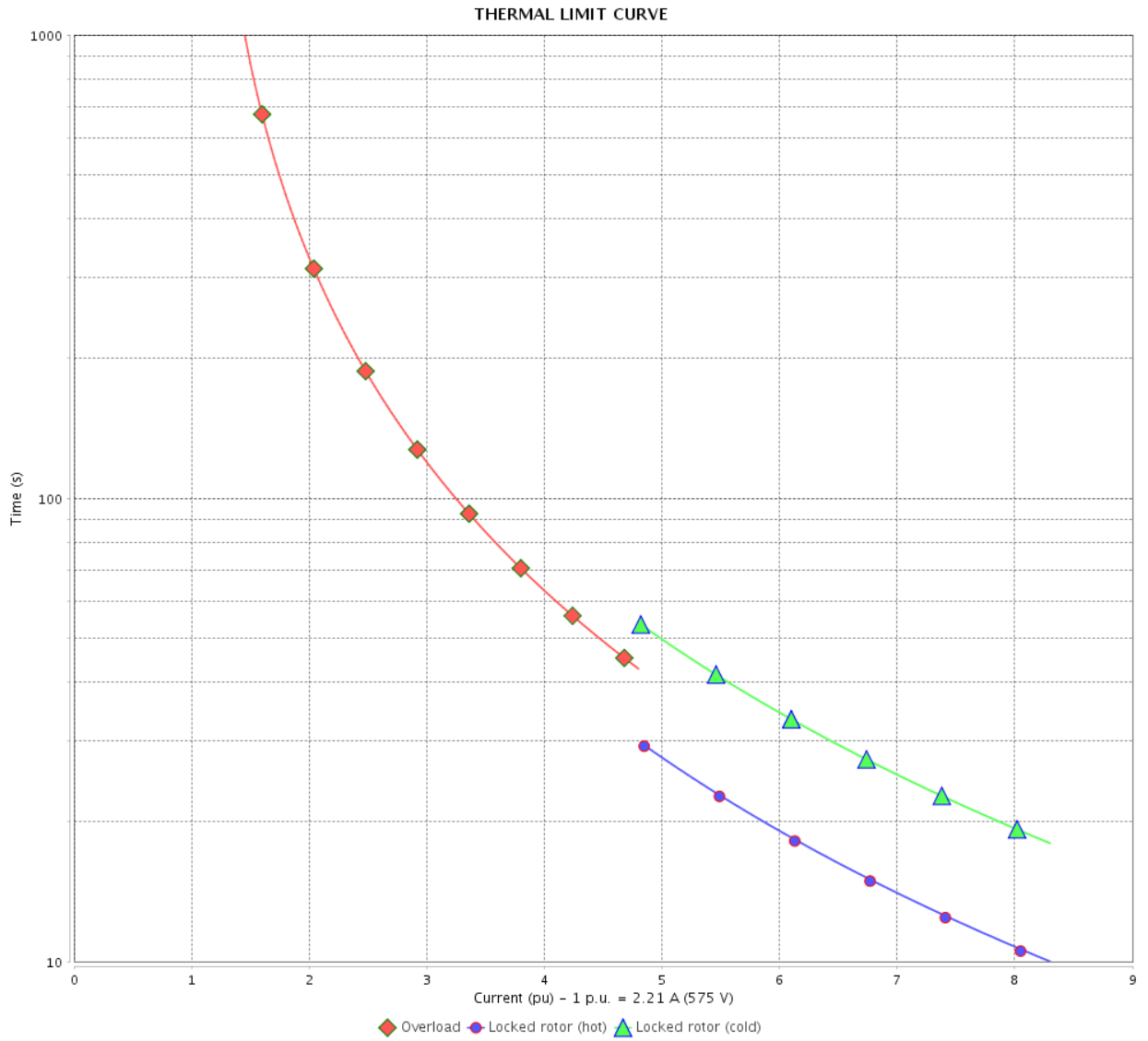
Rev.	Changes Summary	Performed	Checked	Date
Performed by			Page	Revision
Checked by				
Date	01/06/2022			

# THERMAL LIMIT CURVE

Three Phase Induction Motor - Squirrel Cage



Customer : \_\_\_\_\_



Rev.	Changes Summary	Performed	Checked	Date
Performed by		Page 5 / 6		Revision
Checked by				
Date				

# VFD OPERATION CURVE

Three Phase Induction Motor - Squirrel Cage

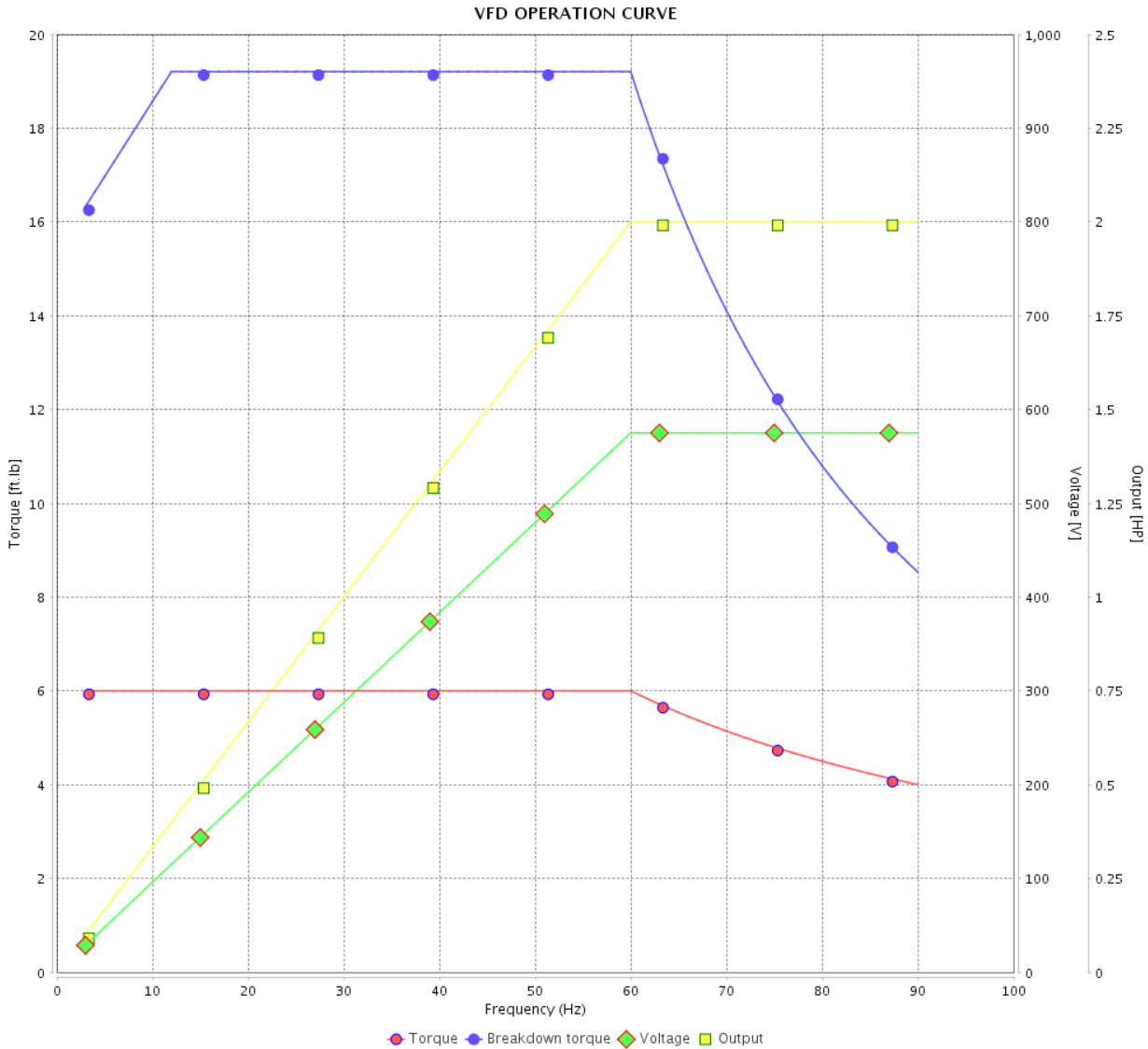


Customer :

Product line : NEMA Premium Efficiency Three-Phase

Product code : 15459789

Catalog # : 00218ST3HIER145TC-W2

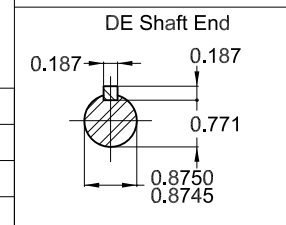
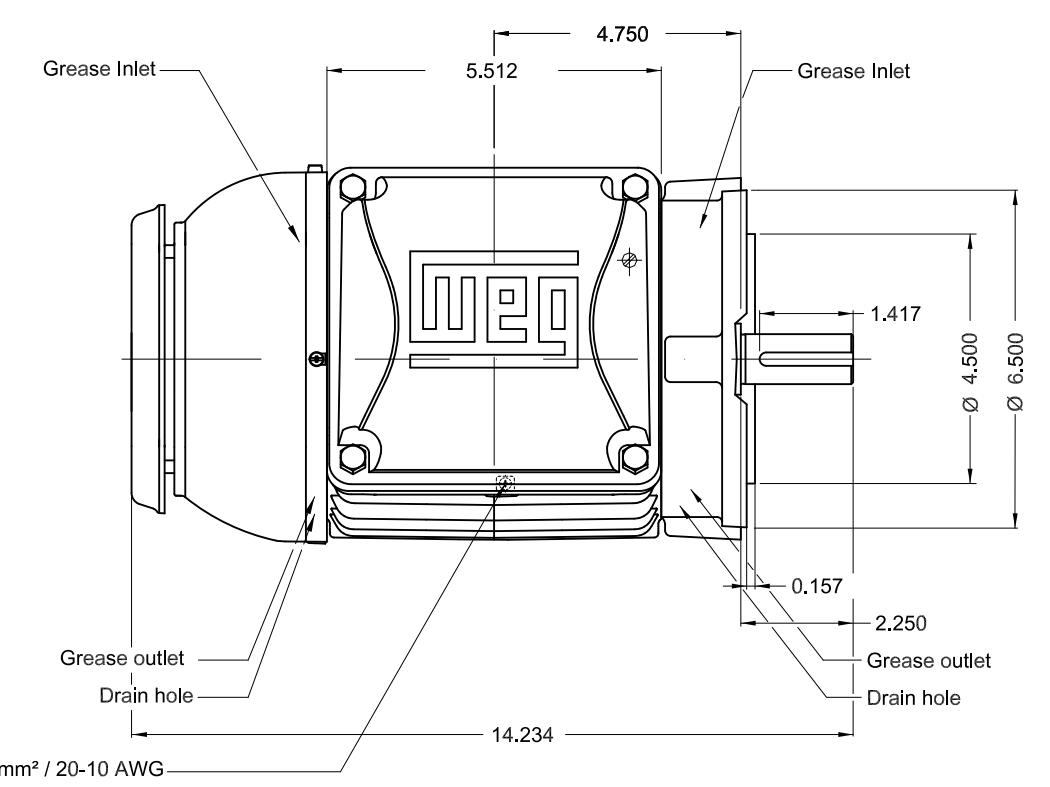
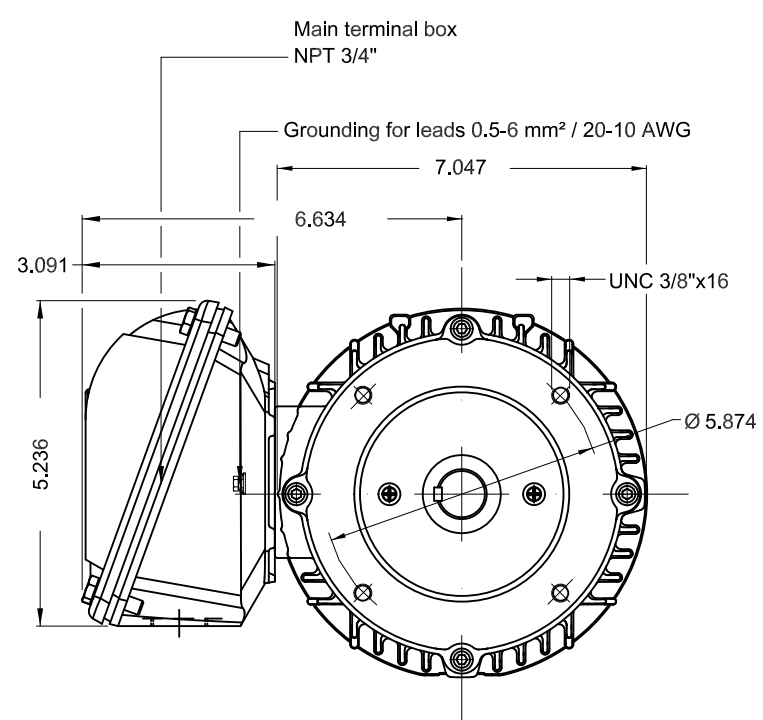


Performance : 575 V 60 Hz 4P

Rated current : 2.21 A  
 LRC : 8.3  
 Rated torque : 6.00 ft.lb  
 Locked rotor torque : 270 %  
 Breakdown torque : 320 %  
 Rated speed : 1750 rpm

Moment of inertia (J) : 0.1561 sq.ft.lb  
 Duty cycle : Cont.(S1)  
 Insulation class : F  
 Service factor : 1.25  
 Temperature rise : 80 K  
 Design : B

Rev.	Changes Summary	Performed	Checked	Date
Performed by			Page	Revision
Checked by				
Date				



Color RAL 5009
Painting plan 202E
Mounting NEMA W-6
Mounting V18

2 HP 04 Poles 60 Hz										A								
ECM										LOC	SUMMARY OF MODIFICATIONS			EXECUTED	CHECKED	RELEASED	DATE	VER
EXECUTED	HYBRISUSER		THREE PH. MOTOR IEEE 841 W22 PREM. EFF.		FRAME 145TC IP55 TEFC			PREVIEW		WDD		SHEET		1 / 1				
CHECKED																		
RELEASED																		
REL DT.			WMO Jaragua do Sul		Product Engineering													

Dimensions in inches XME A3



Class I, Div 2, Gr A, B, C and D - T3  
 Class I, Zone 2, IIC - T3  
 Class II, Div 2, Gr F and G - T5  
 For use on PWM: Gr. A, B, C, D, F and G,  
 VT 1000:1, CT 20:1, 1.00SF - T4A

MADE IN BRAZIL  
 15459789

MODEL 00218ST3HIER145TC-W2

Inverter Duty Motor  
 Severe Duty



FOR SAFE AREA  
 Mod. TE1BFOXON  
 CC029A

PH3 60Hz Fr. 145TC 1000m.a.s.l. IP55 TEFC 60lb

V 575

A 2.21

HP 2.0

kW 1.5

SF 1.25

SFA 2.76

RPM 1755

PF 0.79

AMB 40°C

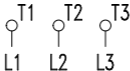
INS cl. F DT80K

NEMA NOM EFF 86.5%

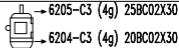
DUTY CONT.

DES B Code L

GUARANT. EFF 84.0%



575V



MOBIL POLYREX EM (20000h)

