

# DATA SHEET



## Three Phase Induction Motor - Squirrel Cage

Customer :																			
Product line	: NEMA Premium Efficiency Three-Phase																		
Product code :	11856861																		
Catalog # :	00309ET3H215T-W22																		
Frame : 213/5T Output : 3 HP (2.2 kW) Poles : 8 Frequency : 60 Hz Rated voltage : 575 V Rated current : 3.64 A L. R. Amperes : 24.8 A LRC : 6.8x(Code K) No load current : 2.17 A Rated speed : 870 rpm Slip : 3.33 % Rated torque : 18.1 ft.lb Locked rotor torque : 229 % Breakdown torque : 275 % Insulation class : F Service factor : 1.25 Moment of inertia (J) : 2.11 sq.ft.lb Design : B	Locked rotor time : 79s (cold) 44s (hot) Temperature rise : 80 K Duty cycle : Cont.(S1) Ambient temperature : -20°C to +40°C Altitude : 1000 m.a.s.l. Protection degree : IP55 Cooling method : IC411 - TEFC Mounting : F-1 Rotation <sup>1</sup> : Both (CW and CCW) Noise level <sup>2</sup> : 52.0 dB(A) Starting method : Direct On Line Approx. weight <sup>3</sup> : 182 lb																		
Output	25%    50%    75%    100%																		
Efficiency (%)	83.7    84.0    85.5    85.5																		
Power Factor	0.29    0.50    0.63    0.71																		
Foundation loads																			
Max. traction : 190 lb																			
Max. compression : 372 lb																			
	<table border="0"> <tr> <td></td> <td style="text-align: center;"><u>Drive end</u></td> <td style="text-align: center;"><u>Non drive end</u></td> </tr> <tr> <td>Bearing type :</td> <td style="text-align: center;">6308 ZZ</td> <td style="text-align: center;">6207 ZZ</td> </tr> <tr> <td>Sealing :</td> <td style="text-align: center;">V'Ring</td> <td style="text-align: center;">V'Ring</td> </tr> <tr> <td>Lubrication interval :</td> <td style="text-align: center;">-</td> <td style="text-align: center;">-</td> </tr> <tr> <td>Lubricant amount :</td> <td style="text-align: center;">-</td> <td style="text-align: center;">-</td> </tr> <tr> <td>Lubricant type :</td> <td colspan="2" style="text-align: center;">Mobil Polyrex EM</td> </tr> </table>		<u>Drive end</u>	<u>Non drive end</u>	Bearing type :	6308 ZZ	6207 ZZ	Sealing :	V'Ring	V'Ring	Lubrication interval :	-	-	Lubricant amount :	-	-	Lubricant type :	Mobil Polyrex EM	
	<u>Drive end</u>	<u>Non drive end</u>																	
Bearing type :	6308 ZZ	6207 ZZ																	
Sealing :	V'Ring	V'Ring																	
Lubrication interval :	-	-																	
Lubricant amount :	-	-																	
Lubricant type :	Mobil Polyrex EM																		
Notes																			
This revision replaces and cancel the previous one, which must be eliminated. (1) Looking the motor from the shaft end. (2) Measured at 1m and with tolerance of +3dB(A). (3) Approximate weight subject to changes after manufacturing process. (4) At 100% of full load.																			
These are average values based on tests with sinusoidal power supply, subject to the tolerances stipulated in NEMA MG-1.																			
Rev.	Changes Summary	Performed	Checked	Date															
Performed by																			
Checked by			Page	Revision															
Date	01/06/2022		1 / 6																

# TORQUE AND CURRENT VS SPEED CURVE

## Three Phase Induction Motor - Squirrel Cage



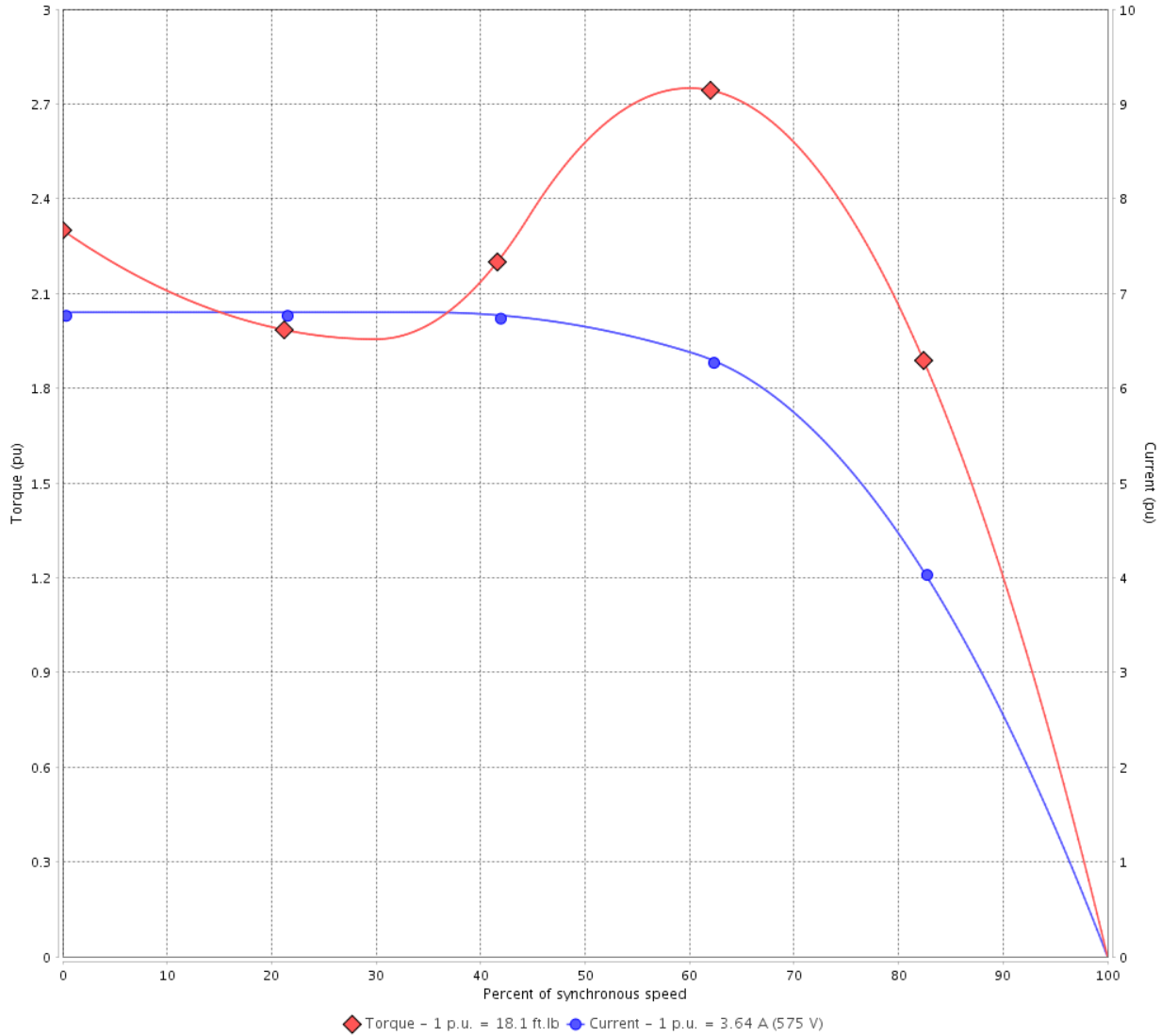
Customer :

Product line : NEMA Premium Efficiency Three-Phase

Product code : 11856861

Catalog # : 00309ET3H215T-W22

TORQUE AND CURRENT VS SPEED CURVE



Performance : 575 V 60 Hz 8P

Rated current	: 3.64 A	Moment of inertia (J)	: 2.11 sq.ft.lb
LRC	: 6.8	Duty cycle	: Cont.(S1)
Rated torque	: 18.1 ft.lb	Insulation class	: F
Locked rotor torque	: 229 %	Service factor	: 1.25
Breakdown torque	: 275 %	Temperature rise	: 80 K
Rated speed	: 870 rpm	Design	: B

Locked rotor time : 79s (cold) 44s (hot)

Rev.	Changes Summary	Performed	Checked	Date
Performed by			Page 2 / 6	Revision
Checked by				
Date	01/06/2022			

# LOAD PERFORMANCE CURVE

## Three Phase Induction Motor - Squirrel Cage

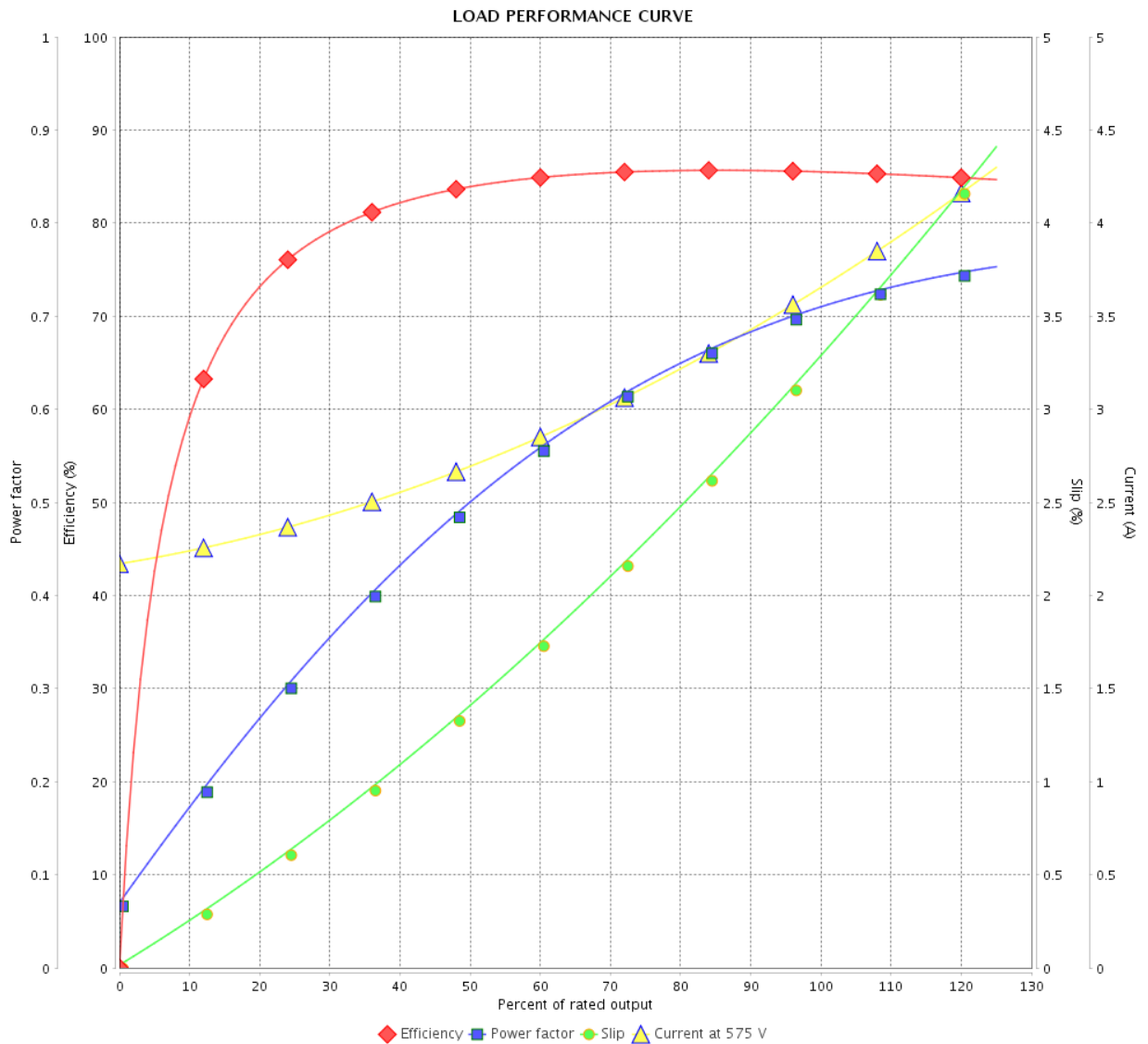


Customer : \_\_\_\_\_

Product line : NEMA Premium Efficiency Three-Phase

Product code : 11856861

Catalog # : 00309ET3H215T-W22



Performance : 575 V 60 Hz 8P

Rated current : 3.64 A  
 LRC : 6.8  
 Rated torque : 18.1 ft.lb  
 Locked rotor torque : 229 %  
 Breakdown torque : 275 %  
 Rated speed : 870 rpm

Moment of inertia (J) : 2.11 sq.ft.lb  
 Duty cycle : Cont.(S1)  
 Insulation class : F  
 Service factor : 1.25  
 Temperature rise : 80 K  
 Design : B

Rev.	Changes Summary	Performed	Checked	Date
Performed by		Page		Revision
Checked by		3 / 6		
Date		01/06/2022		

# THERMAL LIMIT CURVE



## Three Phase Induction Motor - Squirrel Cage

Customer :

Product line : NEMA Premium Efficiency Three-Phase  
Product code : 11856861  
Catalog # : 00309ET3H215T-W22

Performance : 575 V 60 Hz 8P

Rated current	: 3.64 A	Moment of inertia (J)	: 2.11 sq.ft.lb
LRC	: 6.8	Duty cycle	: Cont.(S1)
Rated torque	: 18.1 ft.lb	Insulation class	: F
Locked rotor torque	: 229 %	Service factor	: 1.25
Breakdown torque	: 275 %	Temperature rise	: 80 K
Rated speed	: 870 rpm	Design	: B

Heating constant

Cooling constant

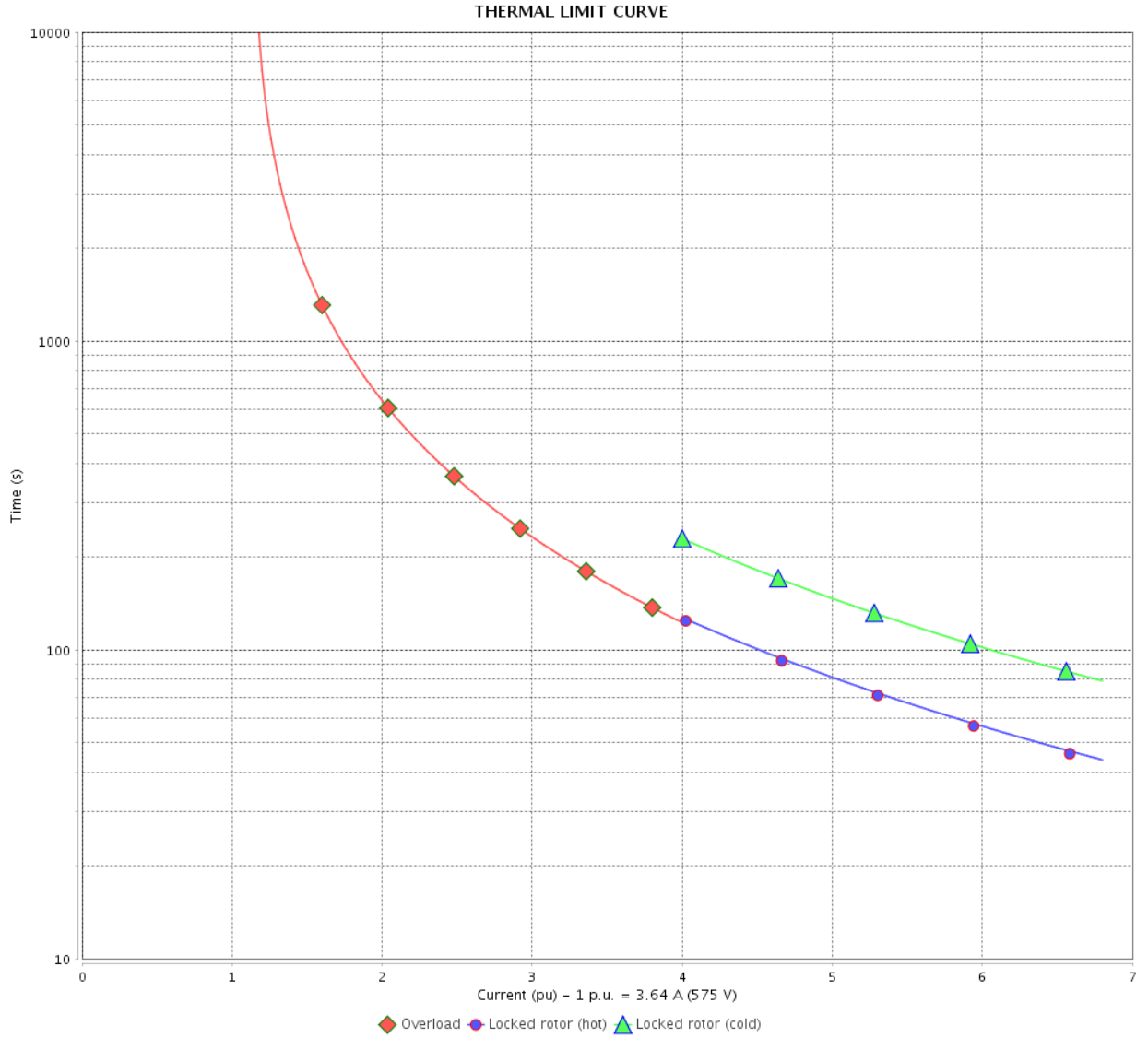
Rev.	Changes Summary	Performed	Checked	Date
Performed by				
Checked by			Page	Revision
Date	01/06/2022		4 / 6	

# THERMAL LIMIT CURVE

Three Phase Induction Motor - Squirrel Cage



Customer : \_\_\_\_\_



Rev.	Changes Summary	Performed	Checked	Date
Performed by		Page 5 / 6		Revision
Checked by				
Date				

# VFD OPERATION CURVE

Three Phase Induction Motor - Squirrel Cage

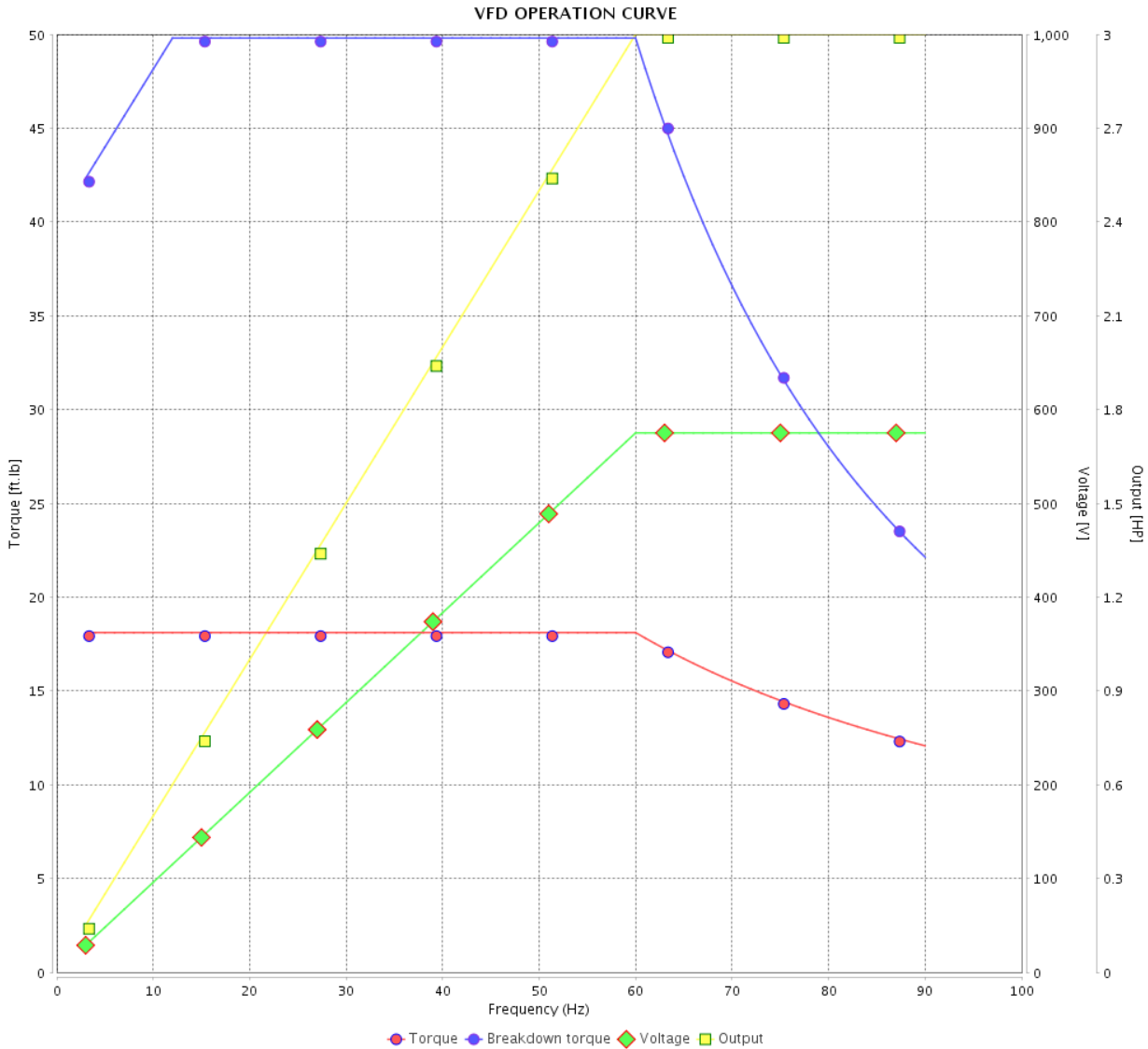


Customer : \_\_\_\_\_

Product line : NEMA Premium Efficiency Three-Phase

Product code : 11856861

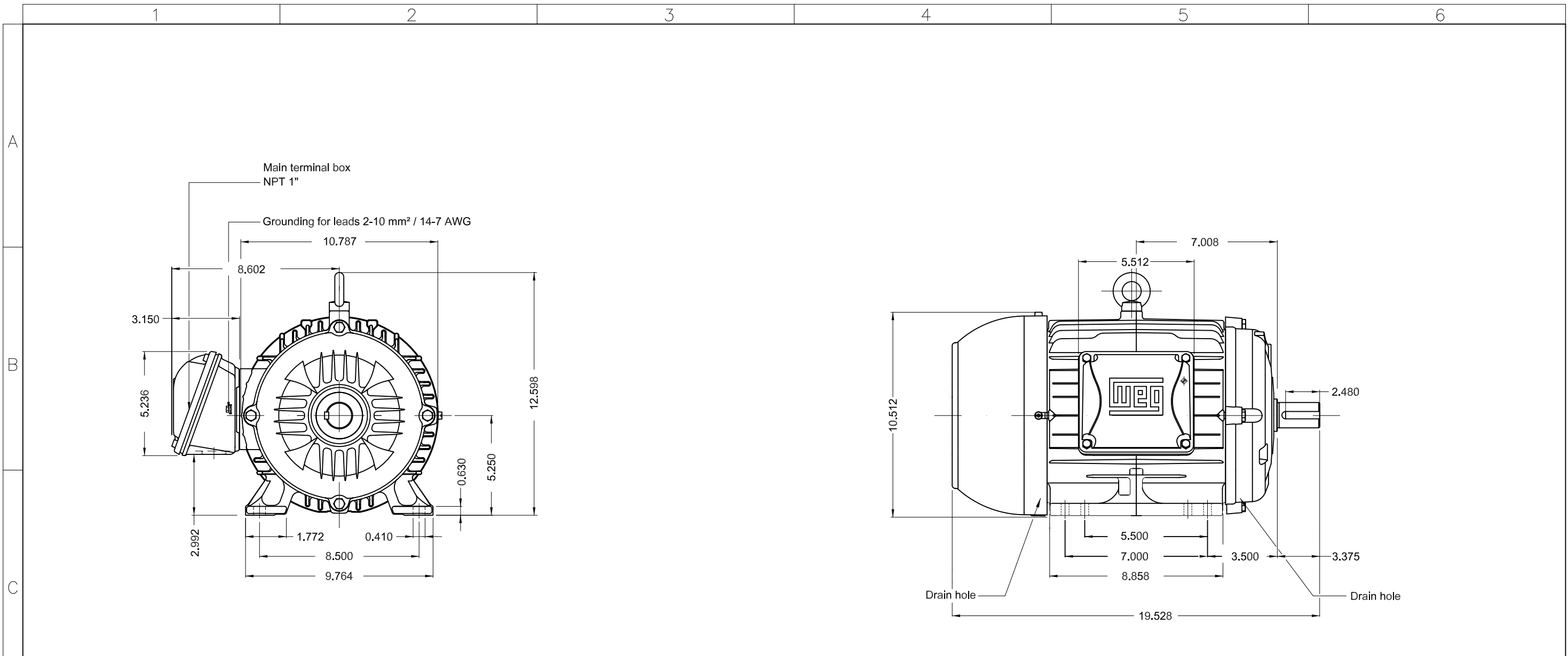
Catalog # : 00309ET3H215T-W22



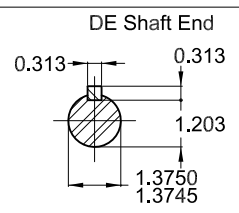
Performance : 575 V 60 Hz 8P

Rated current	: 3.64 A	Moment of inertia (J)	: 2.11 sq.ft.lb
LRC	: 6.8	Duty cycle	: Cont.(S1)
Rated torque	: 18.1 ft.lb	Insulation class	: F
Locked rotor torque	: 229 %	Service factor	: 1.25
Breakdown torque	: 275 %	Temperature rise	: 80 K
Rated speed	: 870 rpm	Design	: B

Rev.	Changes Summary	Performed	Checked	Date
Performed by			Page 6 / 6	Revision
Checked by				
Date	01/06/2022			



3 HP 08 Poles 60 Hz										A



Color RAL 5009  
 Painting plan 207A  
 Mounting B3R(D)

ECM	LOC	SUMMARY OF MODIFICATIONS	EXECUTED	CHECKED	RELEASED	DATE	VER
EXECUTED	HYBRISUSER	THREE PH. MOTOR W22 PREM. EFF.					
CHECKED		FRAME 213/5T IP55 TEFC					
RELEASED							
REL DT.	WMO	Jaragua do Sul	Product Engineering				

**PREVIEW**  
 WDD  
 SHEET 1 / 1

MADE IN BRAZIL  
11856861



MODEL 00309ET3H215T-W22

Inverter Duty Motor  
Severe Duty



Class I, Div 2, Gr A, B, C and D - T3  
Class I, Zone 2, IIC - T3  
Class II, Div 2, Gr F and G - T4  
For use on PWM: Gr. A, B, C, D and F,  
VT 1000:1, CT 20:1, 1.00SF - T3A



FOR SAFE AREA  
Mod. TE1BFOXON  
CC029A

PH3 60Hz Fr. 213/5T 1000m.a.s.l. IP55 TEFC 182lb

V 575

A 3.64

HP 3.0

kW 2.2

SF 1.25

SFA 4.55

RPM 870

PF 0.71

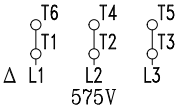
AMB 40°C

INS cl. F DT80K

NEMA NOM EFF 85.5%

DUTY CONT.

DES B Code K



MOBIL POLYREX EM