

DATA SHEET



Three Phase Induction Motor - Squirrel Cage

Customer :																			
Product line	: NEMA Premium Efficiency Three-Phase																		
Product code :	11433788																		
Catalog # :	00312ST3HIE213TC-W22																		
Frame : 213TC Output : 3 HP (2.2 kW) Poles : 6 Frequency : 60 Hz Rated voltage : 575 V Rated current : 3.53 A L. R. Amperes : 24.7 A LRC : 7.0x(Code K) No load current : 2.20 A Rated speed : 1175 rpm Slip : 2.08 % Rated torque : 13.4 ft.lb Locked rotor torque : 200 % Breakdown torque : 280 % Insulation class : F Service factor : 1.25 Moment of inertia (J) : 1.20 sq.ft.lb Design : B	Locked rotor time : 104s (cold) 58s (hot) Temperature rise : 80 K Duty cycle : Cont.(S1) Ambient temperature : -20°C to +40°C Altitude : 1000 m.a.s.l. Protection degree : IP55 Cooling method : IC411 - TEFC Mounting : F-1 Rotation ¹ : Both (CW and CCW) Noise level ² : 55.0 dB(A) Starting method : Direct On Line Approx. weight ³ : 160 lb																		
Output	25% 50% 75% 100%																		
Efficiency (%)	85.4 86.5 88.5 89.5																		
Power Factor	0.28 0.50 0.63 0.70																		
Foundation loads																			
Max. traction	: 131 lb																		
Max. compression	: 292 lb																		
	<table border="0"> <tr> <td></td> <td style="text-align: center;"><u>Drive end</u></td> <td style="text-align: center;"><u>Non drive end</u></td> </tr> <tr> <td>Bearing type</td> <td>: 6308 C3</td> <td>6207 C3</td> </tr> <tr> <td>Sealing</td> <td>: Inpro/Seal</td> <td>Inpro/Seal</td> </tr> <tr> <td>Lubrication interval</td> <td>: 20000 h</td> <td>20000 h</td> </tr> <tr> <td>Lubricant amount</td> <td>: 11 g</td> <td>7 g</td> </tr> <tr> <td>Lubricant type</td> <td colspan="2" style="text-align: center;">Mobil Polyrex EM</td> </tr> </table>		<u>Drive end</u>	<u>Non drive end</u>	Bearing type	: 6308 C3	6207 C3	Sealing	: Inpro/Seal	Inpro/Seal	Lubrication interval	: 20000 h	20000 h	Lubricant amount	: 11 g	7 g	Lubricant type	Mobil Polyrex EM	
	<u>Drive end</u>	<u>Non drive end</u>																	
Bearing type	: 6308 C3	6207 C3																	
Sealing	: Inpro/Seal	Inpro/Seal																	
Lubrication interval	: 20000 h	20000 h																	
Lubricant amount	: 11 g	7 g																	
Lubricant type	Mobil Polyrex EM																		
Notes																			
This revision replaces and cancel the previous one, which must be eliminated. (1) Looking the motor from the shaft end. (2) Measured at 1m and with tolerance of +3dB(A). (3) Approximate weight subject to changes after manufacturing process. (4) At 100% of full load.																			
These are average values based on tests with sinusoidal power supply, subject to the tolerances stipulated in NEMA MG-1.																			
Rev.	Changes Summary	Performed	Checked	Date															
Performed by																			
Checked by			Page	Revision															
Date	01/06/2022		1 / 6																

TORQUE AND CURRENT VS SPEED CURVE

Three Phase Induction Motor - Squirrel Cage



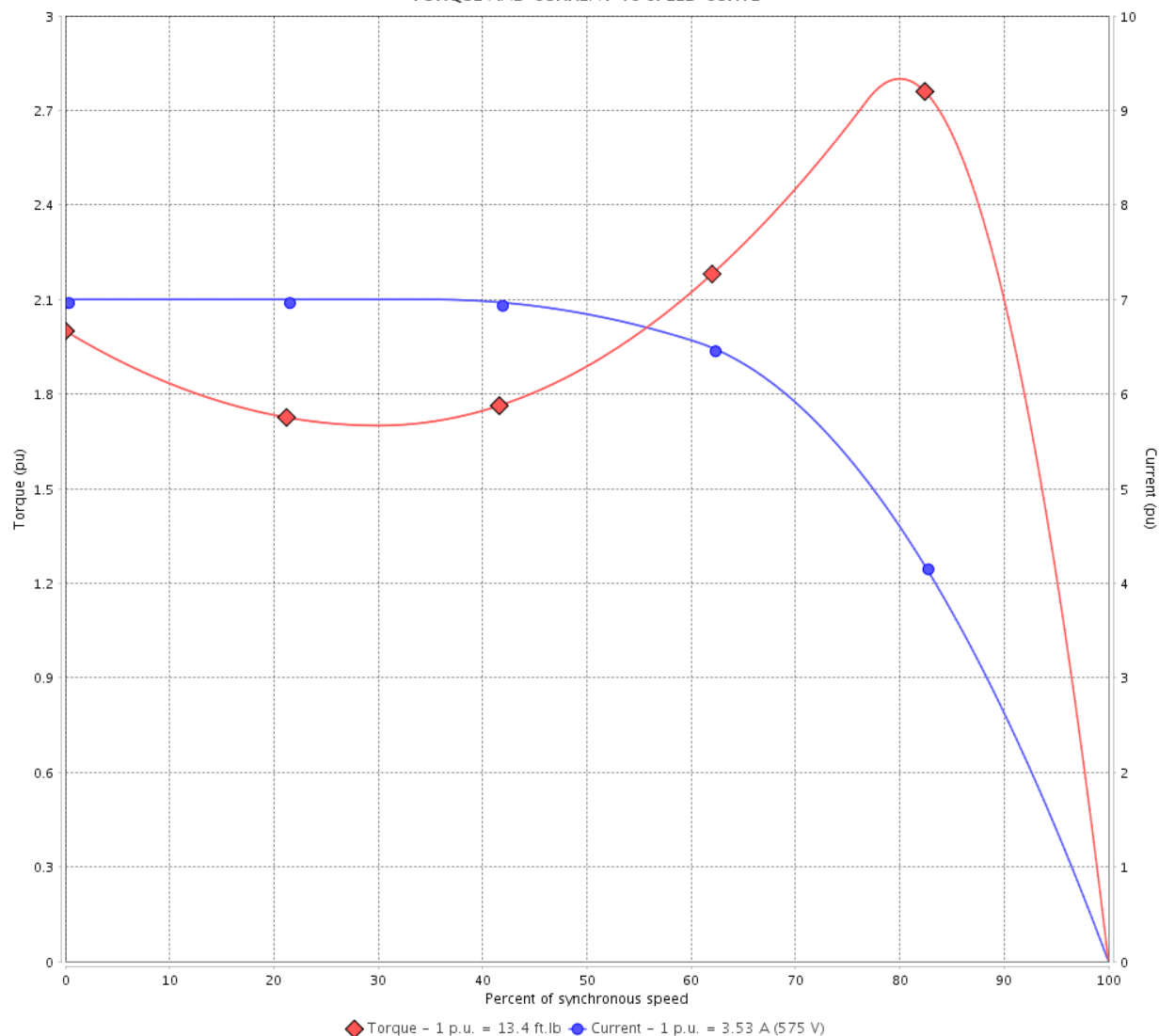
Customer :

Product line : NEMA Premium Efficiency Three-Phase

Product code : 11433788

Catalog # : 00312ST3HIE213TC-W22

TORQUE AND CURRENT VS SPEED CURVE



Performance : 575 V 60 Hz 6P

Rated current	: 3.53 A	Moment of inertia (J)	: 1.20 sq.ft.lb
LRC	: 7.0	Duty cycle	: Cont.(S1)
Rated torque	: 13.4 ft.lb	Insulation class	: F
Locked rotor torque	: 200 %	Service factor	: 1.25
Breakdown torque	: 280 %	Temperature rise	: 80 K
Rated speed	: 1175 rpm	Design	: B

Locked rotor time : 104s (cold) 58s (hot)

Rev.	Changes Summary	Performed	Checked	Date
Performed by			Page 2 / 6	Revision
Checked by				
Date	01/06/2022			

LOAD PERFORMANCE CURVE

Three Phase Induction Motor - Squirrel Cage

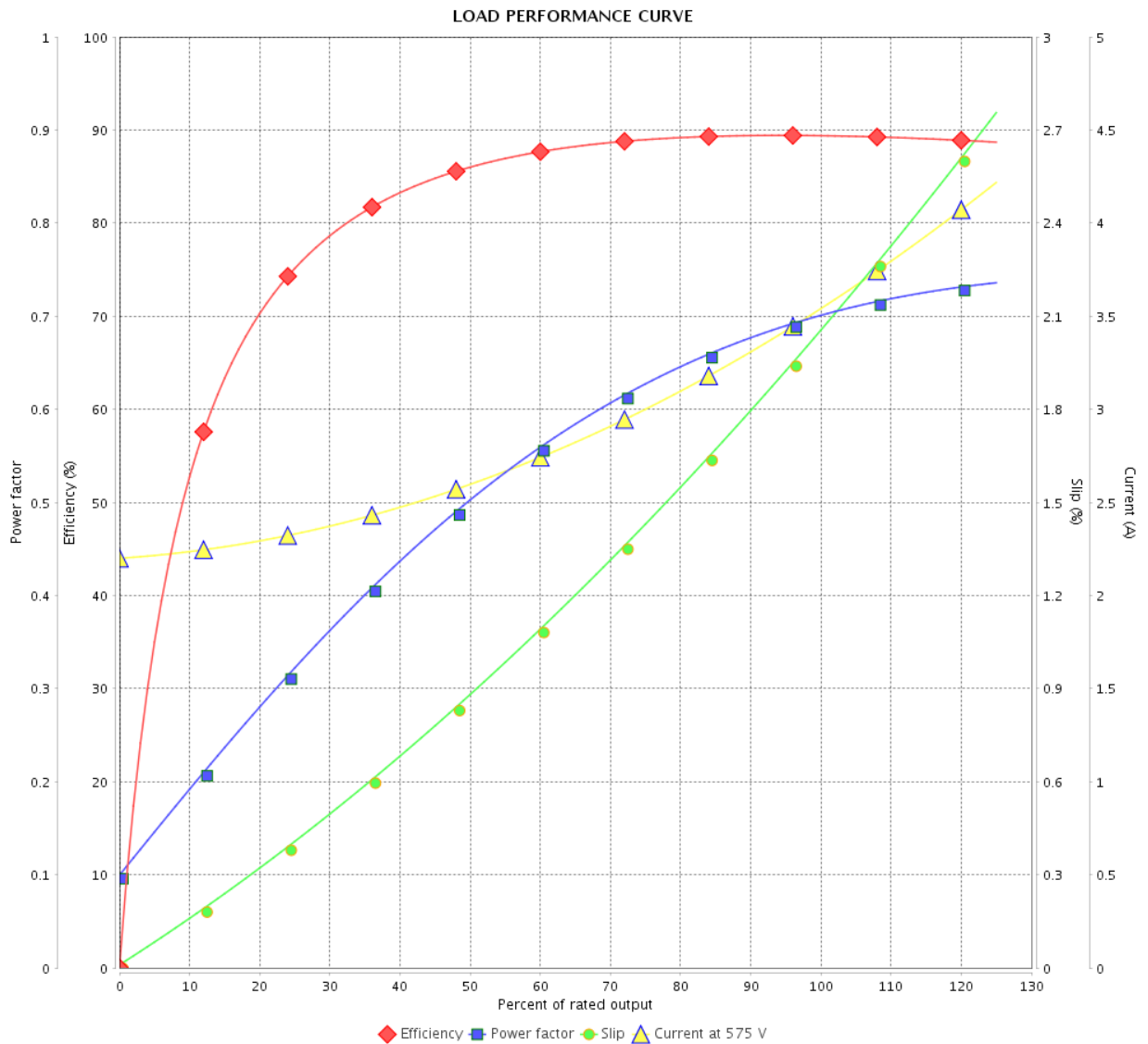


Customer : _____

Product line : NEMA Premium Efficiency Three-Phase

Product code : 11433788

Catalog # : 00312ST3HIE213TC-W22



Performance : 575 V 60 Hz 6P

Rated current : 3.53 A
 LRC : 7.0
 Rated torque : 13.4 ft.lb
 Locked rotor torque : 200 %
 Breakdown torque : 280 %
 Rated speed : 1175 rpm

Moment of inertia (J) : 1.20 sq.ft.lb
 Duty cycle : Cont.(S1)
 Insulation class : F
 Service factor : 1.25
 Temperature rise : 80 K
 Design : B

Rev.	Changes Summary	Performed	Checked	Date
Performed by			Page	Revision
Checked by			3 / 6	
Date	01/06/2022			

THERMAL LIMIT CURVE



Three Phase Induction Motor - Squirrel Cage

Customer :

Product line : NEMA Premium Efficiency Three-Phase
Product code : 11433788
Catalog # : 00312ST3HIE213TC-W22

Performance : 575 V 60 Hz 6P

Rated current	: 3.53 A	Moment of inertia (J)	: 1.20 sq.ft.lb
LRC	: 7.0	Duty cycle	: Cont.(S1)
Rated torque	: 13.4 ft.lb	Insulation class	: F
Locked rotor torque	: 200 %	Service factor	: 1.25
Breakdown torque	: 280 %	Temperature rise	: 80 K
Rated speed	: 1175 rpm	Design	: B

Heating constant

Cooling constant

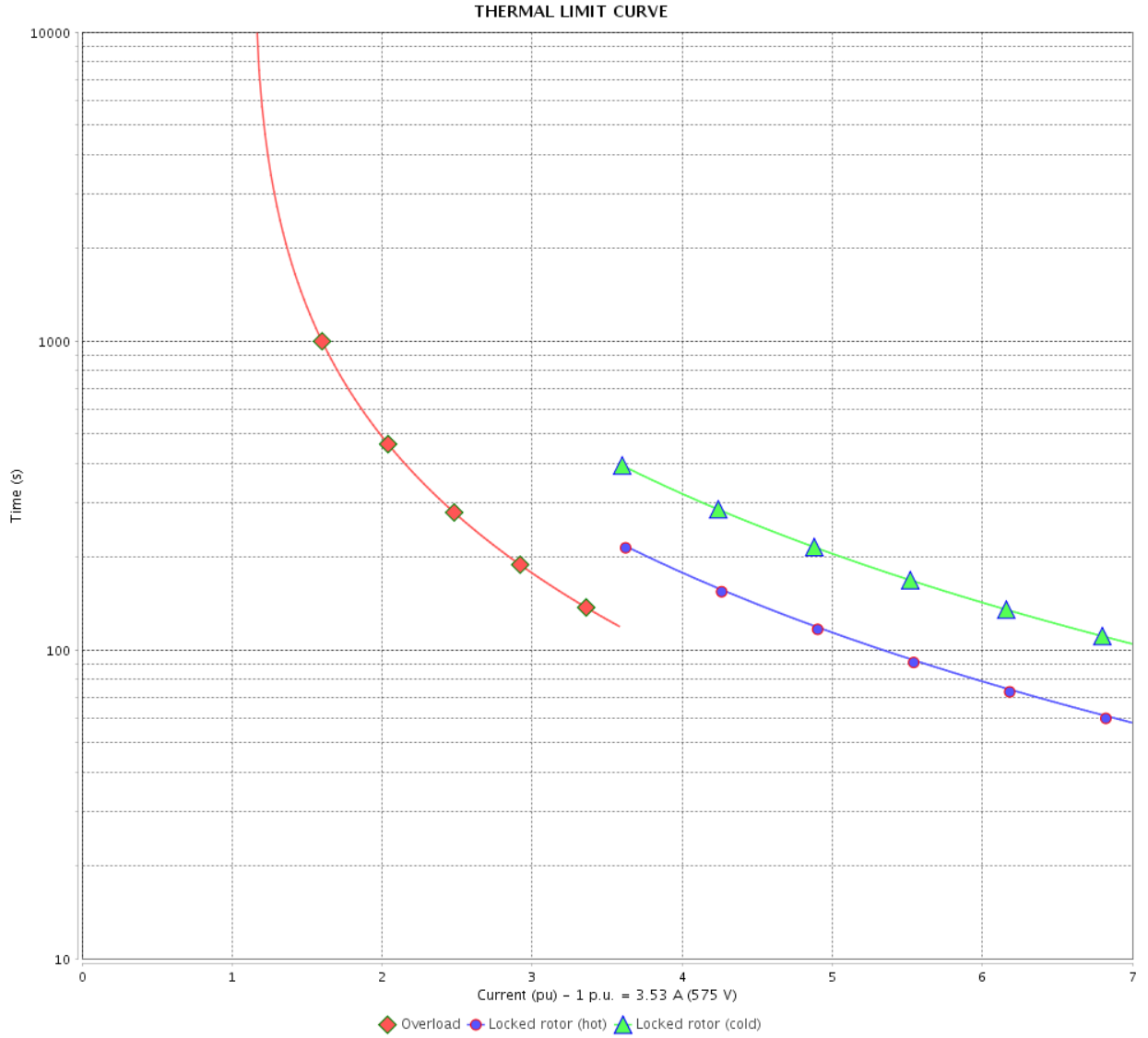
Rev.	Changes Summary	Performed	Checked	Date
Performed by				
Checked by			Page	Revision
Date	01/06/2022		4 / 6	

THERMAL LIMIT CURVE

Three Phase Induction Motor - Squirrel Cage



Customer : _____



Rev.	Changes Summary	Performed	Checked	Date
Performed by		Page		Revision
Checked by				
Date				

VFD OPERATION CURVE

Three Phase Induction Motor - Squirrel Cage

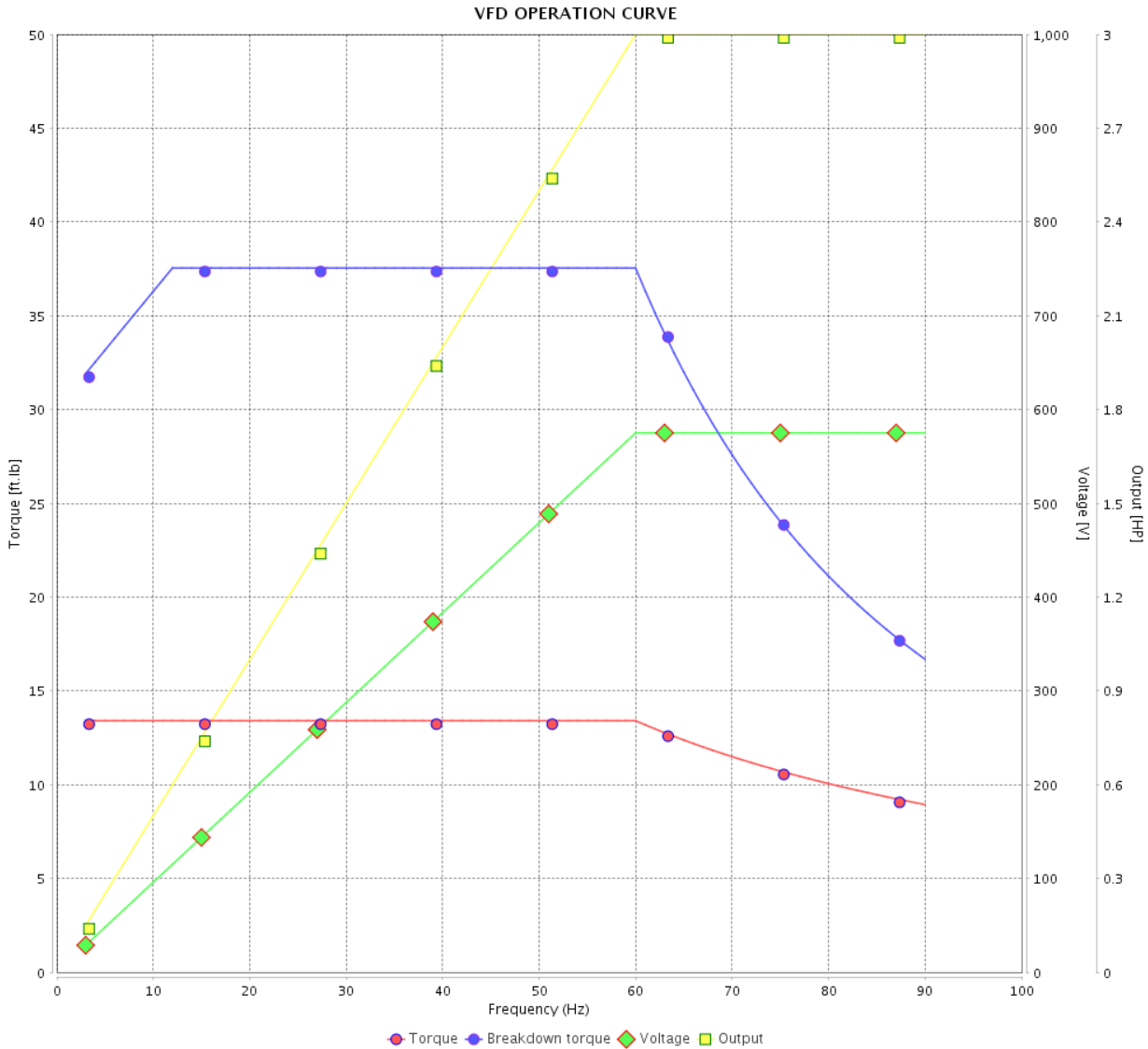


Customer : _____

Product line : NEMA Premium Efficiency Three-Phase

Product code : 11433788

Catalog # : 00312ST3HIE213TC-W22

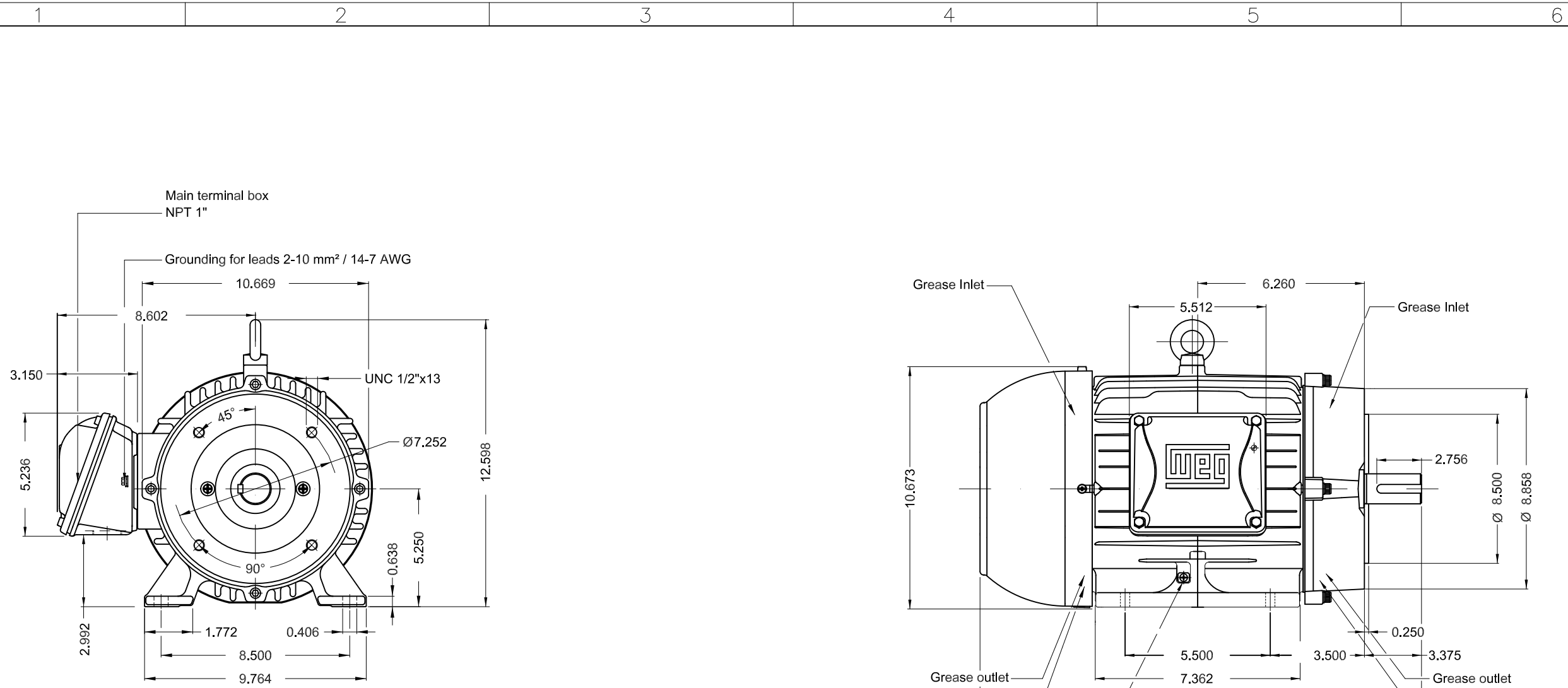


Performance : 575 V 60 Hz 6P

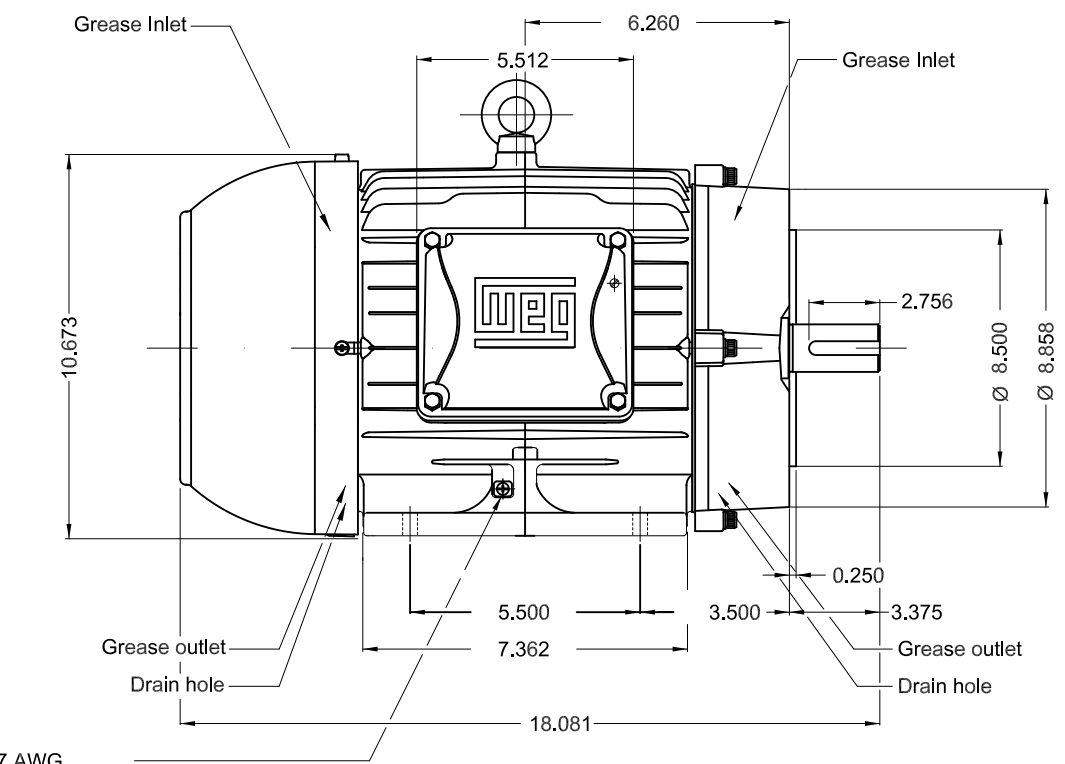
Rated current : 3.53 A
 LRC : 7.0
 Rated torque : 13.4 ft.lb
 Locked rotor torque : 200 %
 Breakdown torque : 280 %
 Rated speed : 1175 rpm

Moment of inertia (J) : 1.20 sq.ft.lb
 Duty cycle : Cont.(S1)
 Insulation class : F
 Service factor : 1.25
 Temperature rise : 80 K
 Design : B

Rev.	Changes Summary	Performed	Checked	Date
Performed by			Page 6 / 6	Revision
Checked by				
Date	01/06/2022			

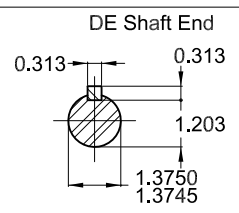


Grounding for leads 2-10 mm² / 14-7 AWG



3 HP 06 Poles 60 Hz A

Color RAL 5009
 Painting plan 202E
 Mounting B34R(D)



ECM	LOC	SUMMARY OF MODIFICATIONS	EXECUTED	CHECKED	RELEASED	DATE	VER
EXECUTED	HYBRISUSER	THREE PH. MOTOR IEEE 841 W22 PREM. EFF.					
CHECKED		FRAME 213TC IP55 TEFC					
RELEASED							
REL DT.	WMO	Jaragua do Sul	Product Engineering				

PREVIEW
 WDD



SHEET 1 / 1