

DATA SHEET



Three Phase Induction Motor - Squirrel Cage

Customer				
Product line	: NEMA Premium Efficiency Three-Phase	Product code :	13533093	
		Catalog # :	00318ST3HIE182T-W22	
Frame	: 182/4T	Locked rotor time	: 41s (cold) 23s (hot)	
Output	: 3 HP (2.2 kW)	Temperature rise	: 80 K	
Poles	: 4	Duty cycle	: Cont.(S1)	
Frequency	: 60 Hz	Ambient temperature	: -20°C to +40°C	
Rated voltage	: 575 V	Altitude	: 1000 m.a.s.l.	
Rated current	: 3.13 A	Protection degree	: IP55	
L. R. Amperes	: 25.3 A	Cooling method	: IC411 - TEFC	
LRC	: 8.1x(Code K)	Mounting	: F-1	
No load current	: 1.60 A	Rotation ¹	: Both (CW and CCW)	
Rated speed	: 1760 rpm	Noise level ²	: 56.0 dB(A)	
Slip	: 2.22 %	Starting method	: Direct On Line	
Rated torque	: 8.95 ft.lb	Approx. weight ³	: 109 lb	
Locked rotor torque	: 229 %			
Breakdown torque	: 340 %			
Insulation class	: F			
Service factor	: 1.25			
Moment of inertia (J)	: 0.3401 sq.ft.lb			
Design	: B			
Output	50%	75%	100%	Foundation loads
Efficiency (%)	87.5	88.5	89.5	Max. traction
Power Factor	0.61	0.73	0.79	Max. compression
				: 140 lb
				: 249 lb
		<u>Drive end</u>	<u>Non drive end</u>	
Bearing type	:	6207 C3	6206 C3	
Sealing	:	Inpro/Seal	Inpro/Seal	
Lubrication interval	:	20000 h	20000 h	
Lubricant amount	:	7 g	5 g	
Lubricant type	:	Mobil Polyrex EM		
Notes				
This revision replaces and cancel the previous one, which must be eliminated. (1) Looking the motor from the shaft end. (2) Measured at 1m and with tolerance of +3dB(A). (3) Approximate weight subject to changes after manufacturing process. (4) At 100% of full load.		These are average values based on tests with sinusoidal power supply, subject to the tolerances stipulated in NEMA MG-1.		
Rev.	Changes Summary		Performed	Checked
Performed by				
Checked by			Page	Revision
Date	13/04/2022		1 / 6	

TORQUE AND CURRENT VS SPEED CURVE

Three Phase Induction Motor - Squirrel Cage



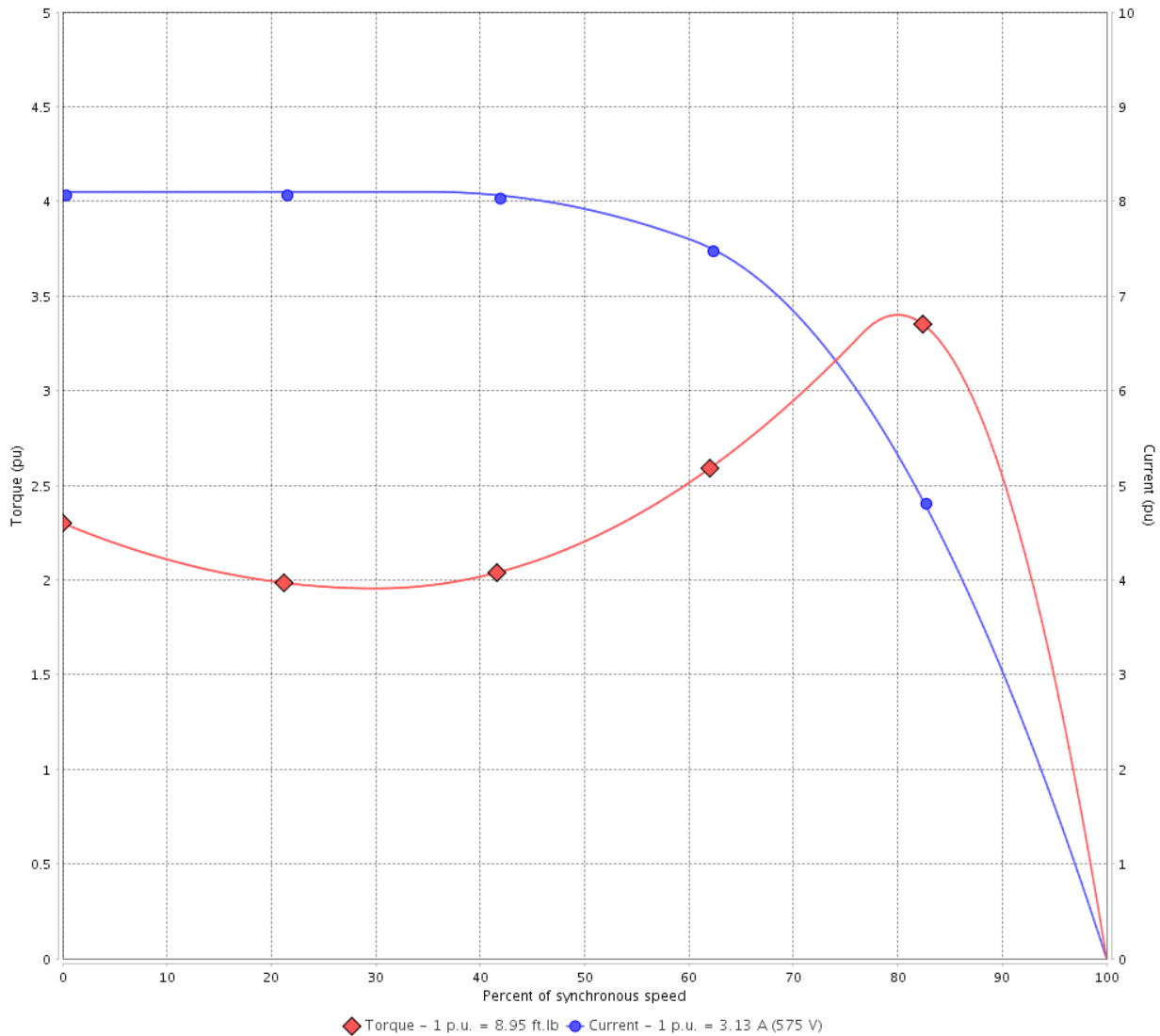
Customer :

Product line : NEMA Premium Efficiency Three-Phase

Product code : 13533093

Catalog # : 00318ST3HIE182T-W22

TORQUE AND CURRENT VS SPEED CURVE



Performance : 575 V 60 Hz 4P

Rated current	: 3.13 A	Moment of inertia (J)	: 0.3401 sq.ft.lb
LRC	: 8.1	Duty cycle	: Cont.(S1)
Rated torque	: 8.95 ft.lb	Insulation class	: F
Locked rotor torque	: 229 %	Service factor	: 1.25
Breakdown torque	: 340 %	Temperature rise	: 80 K
Rated speed	: 1760 rpm	Design	: B

Locked rotor time : 41s (cold) 23s (hot)

Rev.	Changes Summary	Performed	Checked	Date
Performed by			Page 2 / 6	Revision
Checked by				
Date	13/04/2022			

LOAD PERFORMANCE CURVE

Three Phase Induction Motor - Squirrel Cage

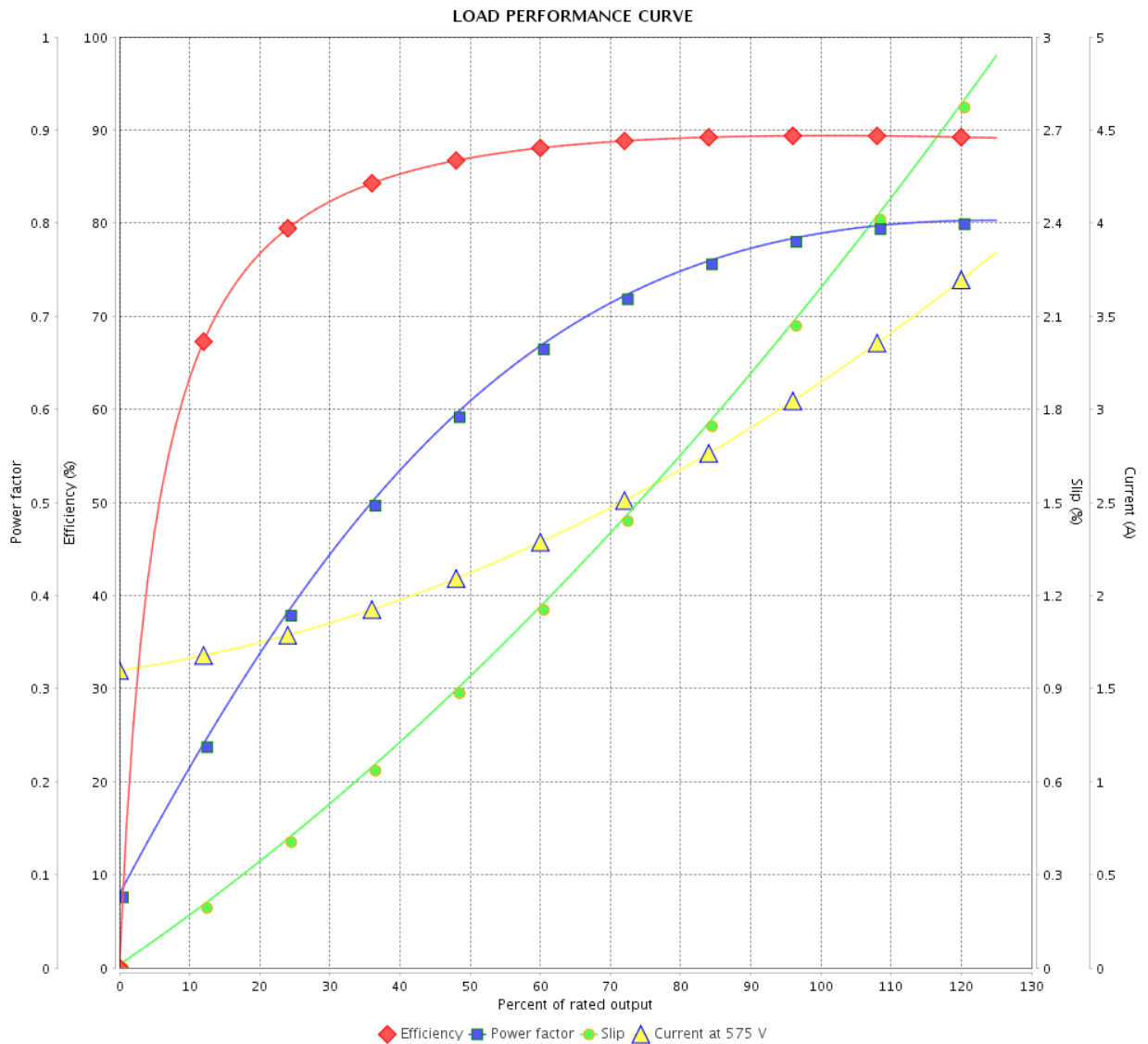


Customer :

Product line : NEMA Premium Efficiency Three-Phase

Product code : 13533093

Catalog # : 00318ST3HIE182T-W22



Performance : 575 V 60 Hz 4P

Rated current : 3.13 A
 LRC : 8.1
 Rated torque : 8.95 ft.lb
 Locked rotor torque : 229 %
 Breakdown torque : 340 %
 Rated speed : 1760 rpm

Moment of inertia (J) : 0.3401 sq.ft.lb
 Duty cycle : Cont.(S1)
 Insulation class : F
 Service factor : 1.25
 Temperature rise : 80 K
 Design : B

Rev.	Changes Summary	Performed	Checked	Date
Performed by			Page	Revision
Checked by				
Date				

THERMAL LIMIT CURVE

Three Phase Induction Motor - Squirrel Cage



Customer :

Product line : NEMA Premium Efficiency Three-Phase

Product code : 13533093

Catalog # : 00318ST3HIE182T-W22

Performance : 575 V 60 Hz 4P

Rated current : 3.13 A
LRC : 8.1
Rated torque : 8.95 ft.lb
Locked rotor torque : 229 %
Breakdown torque : 340 %
Rated speed : 1760 rpm

Moment of inertia (J) : 0.3401 sq.ft.lb
Duty cycle : Cont.(S1)
Insulation class : F
Service factor : 1.25
Temperature rise : 80 K
Design : B

Heating constant

Cooling constant

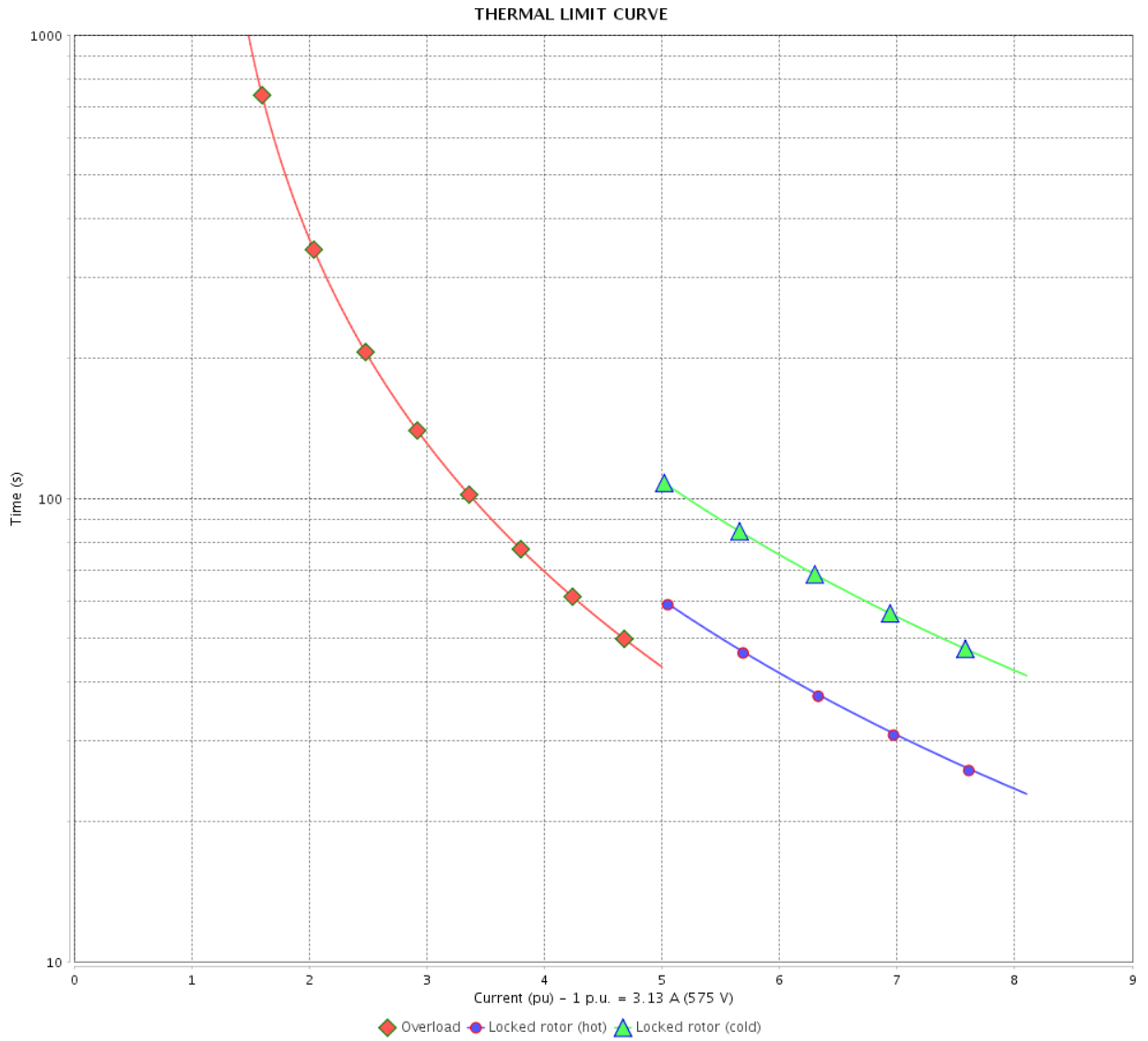
Rev.	Changes Summary	Performed	Checked	Date
Performed by				
Checked by			Page	Revision
Date	13/04/2022		4 / 6	

THERMAL LIMIT CURVE

Three Phase Induction Motor - Squirrel Cage



Customer : _____



Rev.	Changes Summary	Performed	Checked	Date
Performed by		Page 5 / 6		Revision
Checked by				
Date				

VFD OPERATION CURVE

Three Phase Induction Motor - Squirrel Cage

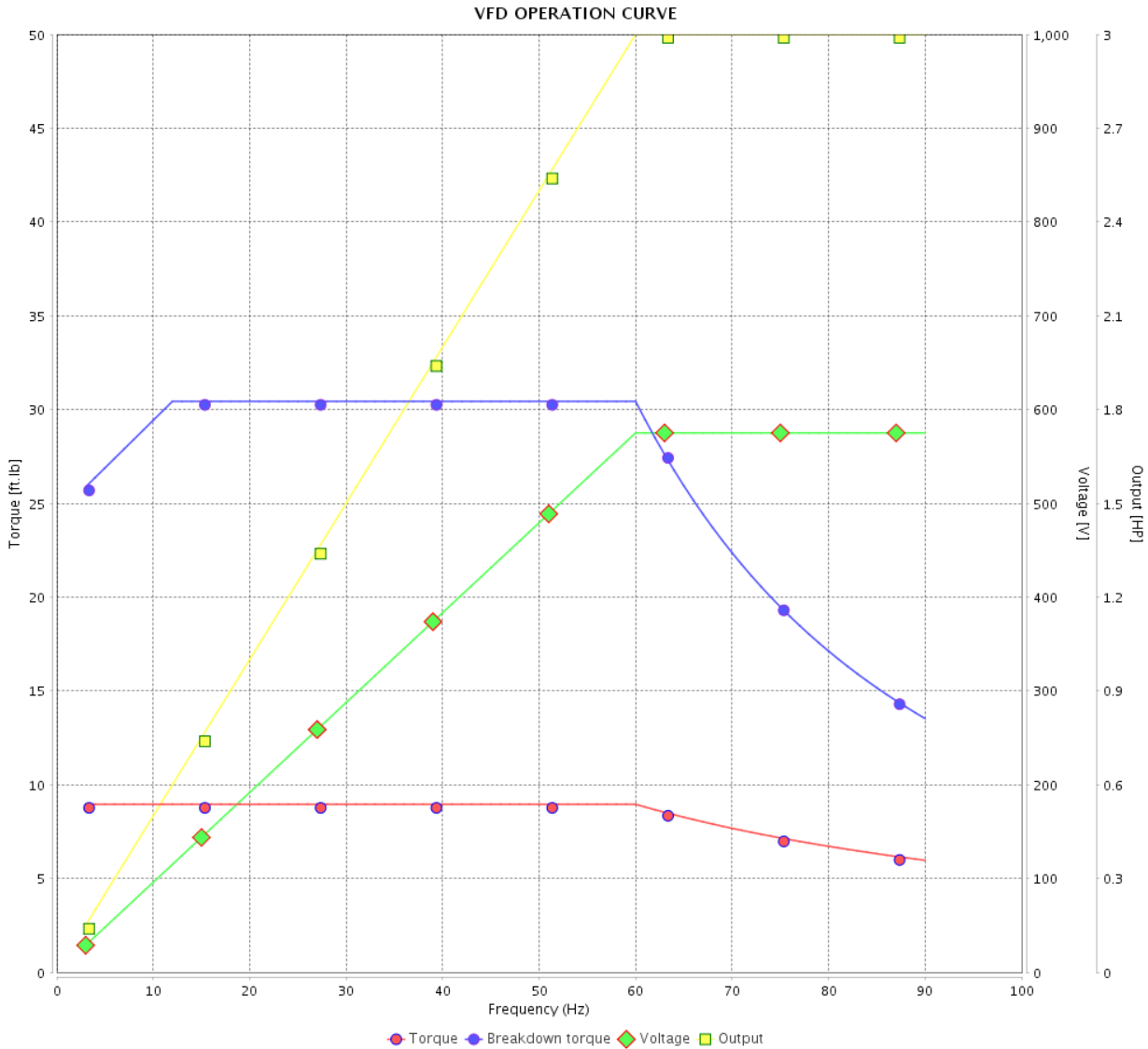


Customer : _____

Product line : NEMA Premium Efficiency Three-Phase

Product code : 13533093

Catalog # : 00318ST3HIE182T-W22



Performance : 575 V 60 Hz 4P

Rated current : 3.13 A
 LRC : 8.1
 Rated torque : 8.95 ft.lb
 Locked rotor torque : 229 %
 Breakdown torque : 340 %
 Rated speed : 1760 rpm

Moment of inertia (J) : 0.3401 sq.ft.lb
 Duty cycle : Cont.(S1)
 Insulation class : F
 Service factor : 1.25
 Temperature rise : 80 K
 Design : B

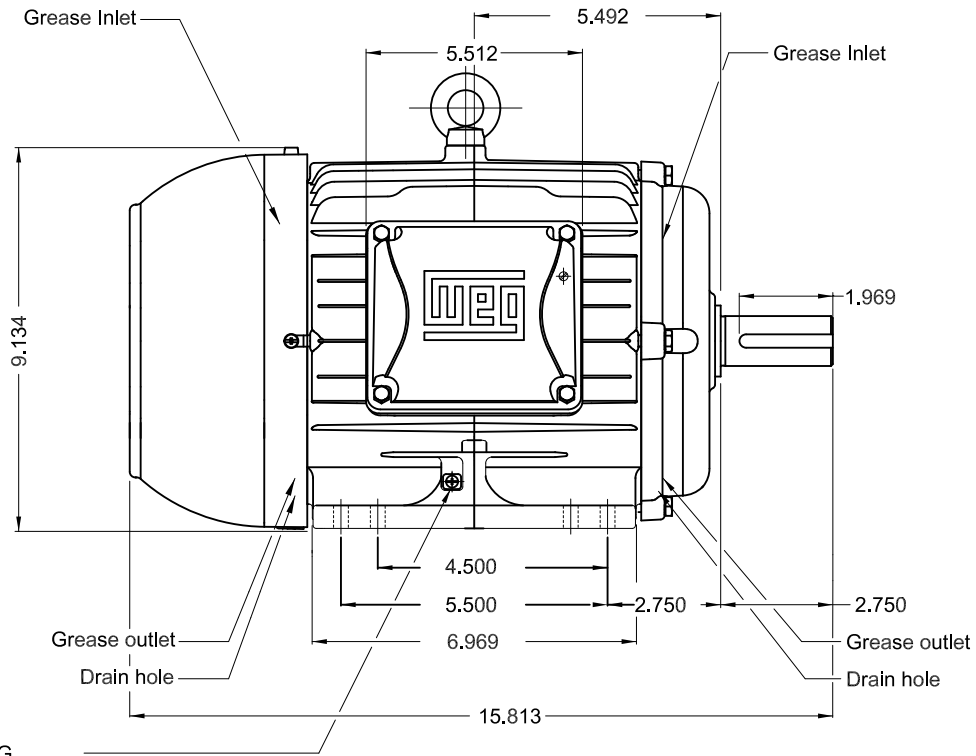
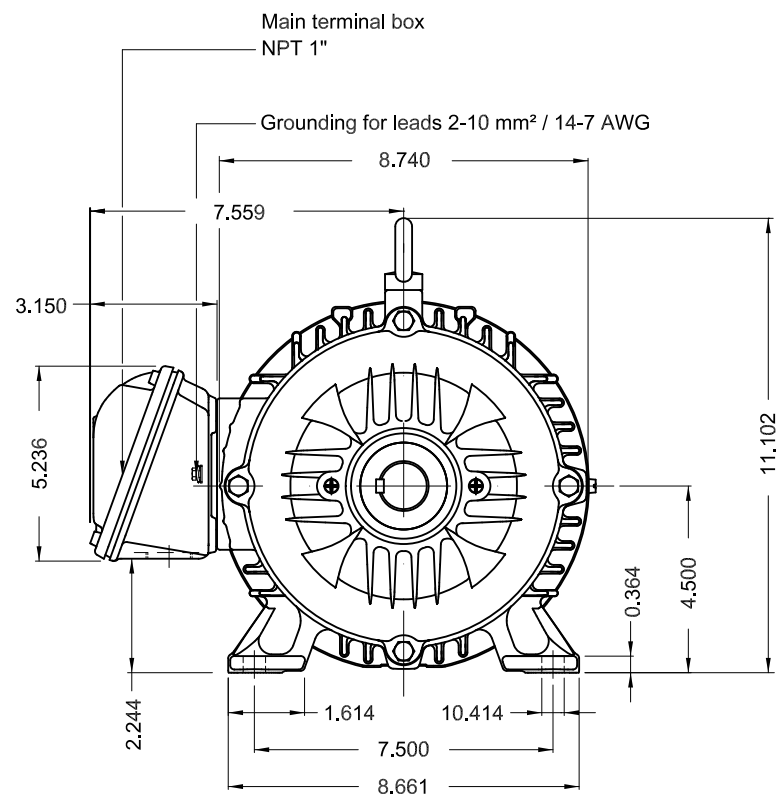
Rev.	Changes Summary	Performed	Checked	Date
Performed by			Page 6 / 6	Revision
Checked by				
Date	13/04/2022			

1 2 3 4 5 6

A

B

C

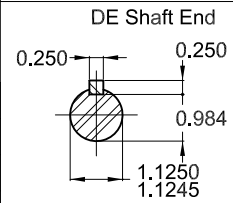


Grounding for leads 2-10 mm² / 14-7 AWG

D

E

Color RAL 5009
 Painting plan 202E
 Mounting NEMA F-1
 Mounting B3R(D)



3 HP 04 Poles 60 Hz A

ECM	LOC	SUMMARY OF MODIFICATIONS	EXECUTED	CHECKED	RELEASED	DATE	VER
EXECUTED	PIRWBUSER	THREE PH. MOTOR IEEE 841 W22 PREM. EFF.					
CHECKED		FRAME 182/4T IP55 TEFC					
RELEASED							
REL DT.	WMO	Jaragua do Sul	Product Engineering	SHEET	1 / 1		

PREVIEW
WDD



MADE IN BRAZIL
13533093



NEMA
Premium

W22

IE003504W22IS

Inverter Duty Motor
Severe Duty

IEEE
841-2009



Class I, Div 2, Gr A, B, C and D - T3
Class I, Zone 2, IIC - T3
Class II, Div 2, Gr F and G - T5
For use on PWM: Gr. A, B, C, D, F and G,
VT 1000:1, CT 20:1, 1.00SF - T4A



FOR SAFE AREA
Mod. TE1BFOXON
CC029A

PH3 60Hz Fr. 182/4T 1000m.a.s.l. IP55 TEFC 109lb

V 575

A 3.13

HP 3.0

kW 2.2

SF 1.25

SFA 3.91

RPM 1760

PF 0.79

AMB 40°C

INS cl. F DT80K

NEMA NOM EFF 89.5%

DUTY CONT.

DES B Code K

GUARANT. EFF 87.5%

