

DATA SHEET



Three Phase Induction Motor - Squirrel Cage

Customer :				
Product line	: NEMA Premium Efficiency Three-Phase			
Product code :	14308685			
Catalog # :	00318XT3H182JP			
Frame : 182/4TZ Output : 3 HP (2.2 kW) Poles : 4 Frequency : 60 Hz Rated voltage : 575 V Rated current : 3.13 A L. R. Amperes : 25.0 A LRC : 8.0x(Code K) No load current : 1.68 A Rated speed : 1760 rpm Slip : 2.22 % Rated torque : 8.95 ft.lb Locked rotor torque : 250 % Breakdown torque : 320 % Insulation class : F Service factor : 1.15 Moment of inertia (J) : 0.2781 sq.ft.lb Design : B	Locked rotor time : 50s (cold) 28s (hot) Temperature rise : 80 K Duty cycle : Cont.(S1) Ambient temperature : -20°C to +40°C Altitude : 1000 m.a.s.l. Protection degree : IP55 Cooling method : IC411 - TEFC Mounting : F-1 Rotation ¹ : Both (CW and CCW) Noise level ² : 56.0 dB(A) Starting method : Direct On Line Approx. weight ³ : 124 lb			
Output	25% 50% 75% 100%			
Efficiency (%)	86.4 87.5 88.5 89.5			
Power Factor	0.35 0.59 0.71 0.79			
Foundation loads				
Max. traction : 55 lb				
Max. compression : 111 lb				
Bearing type	: <u>Drive end</u> 6307 2RS <u>Non drive end</u> 6206 2RS			
Sealing	: Oil Seal Lip Seal			
Lubrication interval	: - -			
Lubricant amount	: - -			
Lubricant type	: Mobil Polyrex EM			
Notes				
This revision replaces and cancel the previous one, which must be eliminated. (1) Looking the motor from the shaft end. (2) Measured at 1m and with tolerance of +3dB(A). (3) Approximate weight subject to changes after manufacturing process. (4) At 100% of full load.				
These are average values based on tests with sinusoidal power supply, subject to the tolerances stipulated in NEMA MG-1.				
Rev.	Changes Summary	Performed	Checked	Date
Performed by				
Checked by			Page	Revision
Date	14/04/2022		1 / 7	

DATA SHEET

Three Phase Induction Motor - Squirrel Cage



Customer : _____

Thermal protection

ID	Application	Type	Quantity	Sensing Temperature
1	Winding	Thermostat - 2 wires	1 x Phase	155 °C

Rev.	Changes Summary	Performed	Checked	Date
Performed by				
Checked by			Page	Revision
Date	14/04/2022		2 / 7	

TORQUE AND CURRENT VS SPEED CURVE



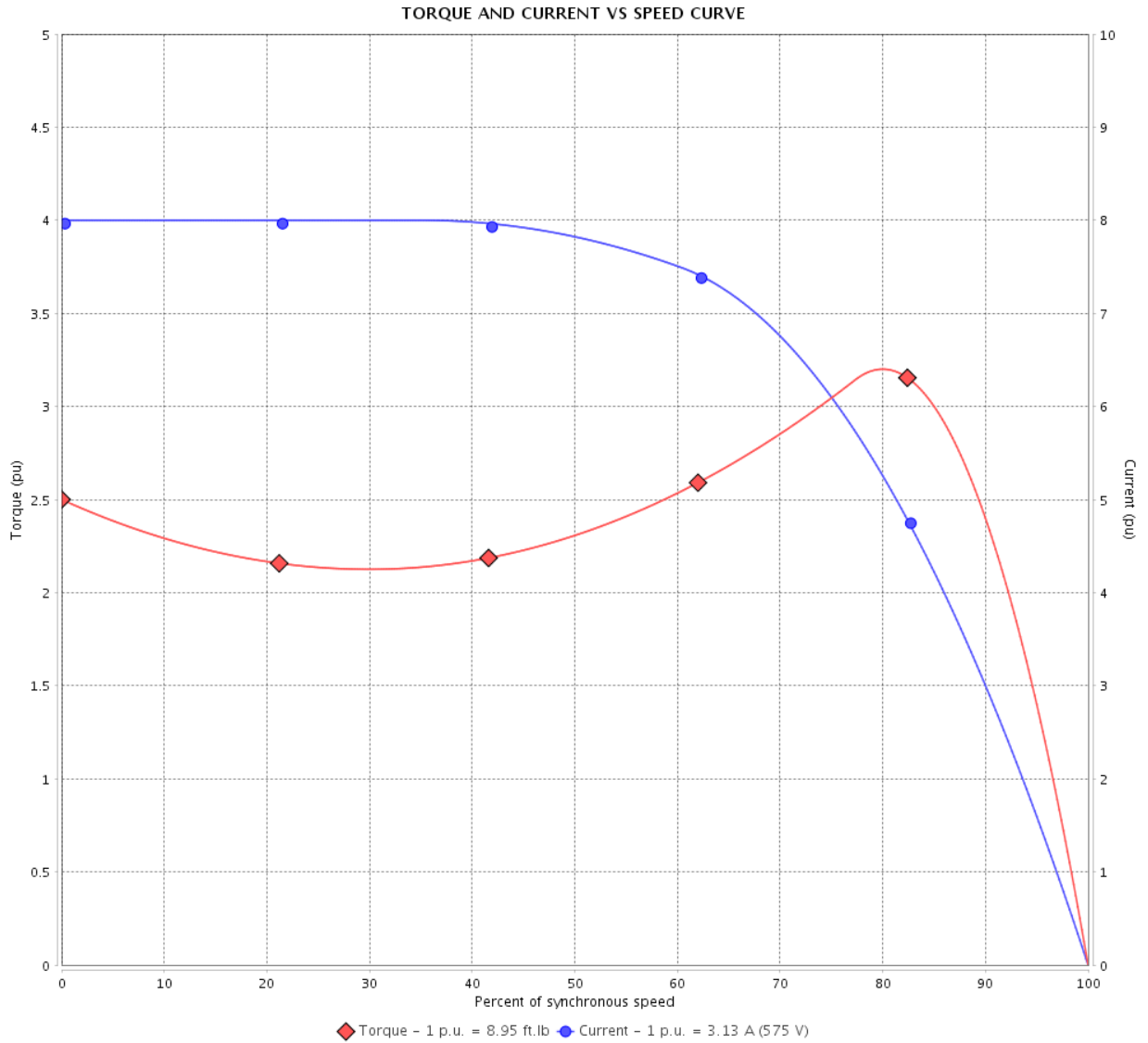
Three Phase Induction Motor - Squirrel Cage

Customer :

Product line : NEMA Premium Efficiency Three-Phase

Product code : 14308685

Catalog # : 00318XT3H182JP



Performance : 575 V 60 Hz 4P

Rated current	: 3.13 A	Moment of inertia (J)	: 0.2781 sq.ft.lb
LRC	: 8.0	Duty cycle	: Cont.(S1)
Rated torque	: 8.95 ft.lb	Insulation class	: F
Locked rotor torque	: 250 %	Service factor	: 1.15
Breakdown torque	: 320 %	Temperature rise	: 80 K
Rated speed	: 1760 rpm	Design	: B

Locked rotor time : 50s (cold) 28s (hot)

Rev.	Changes Summary	Performed	Checked	Date
Performed by			Page 3 / 7	Revision
Checked by				
Date	14/04/2022			

LOAD PERFORMANCE CURVE

Three Phase Induction Motor - Squirrel Cage

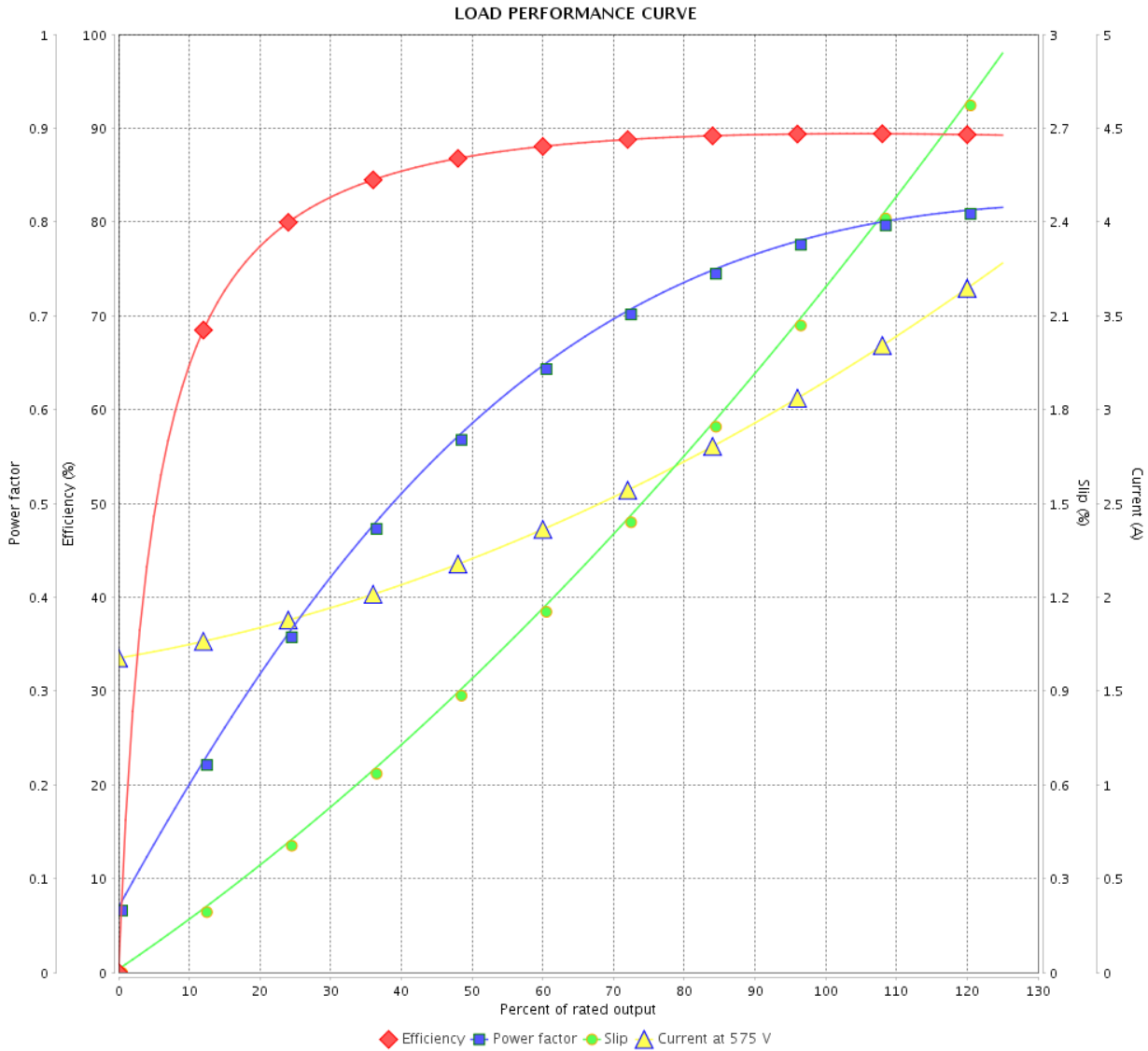


Customer :

Product line : NEMA Premium Efficiency Three-Phase

Product code : 14308685

Catalog # : 00318XT3H182JP



Performance : 575 V 60 Hz 4P

Rated current : 3.13 A
 LRC : 8.0
 Rated torque : 8.95 ft.lb
 Locked rotor torque : 250 %
 Breakdown torque : 320 %
 Rated speed : 1760 rpm

Moment of inertia (J) : 0.2781 sq.ft.lb
 Duty cycle : Cont.(S1)
 Insulation class : F
 Service factor : 1.15
 Temperature rise : 80 K
 Design : B

Rev.	Changes Summary	Performed	Checked	Date
Performed by				
Checked by				
Date				
		Page	Revision	
		4 / 7		

THERMAL LIMIT CURVE



Three Phase Induction Motor - Squirrel Cage

Customer :

Product line : NEMA Premium Efficiency Three-Phase
 Product code : 14308685
 Catalog # : 00318XT3H182JP

Performance : 575 V 60 Hz 4P

Rated current : 3.13 A	Moment of inertia (J) : 0.2781 sq.ft.lb
LRC : 8.0	Duty cycle : Cont.(S1)
Rated torque : 8.95 ft.lb	Insulation class : F
Locked rotor torque : 250 %	Service factor : 1.15
Breakdown torque : 320 %	Temperature rise : 80 K
Rated speed : 1760 rpm	Design : B

Heating constant

Cooling constant

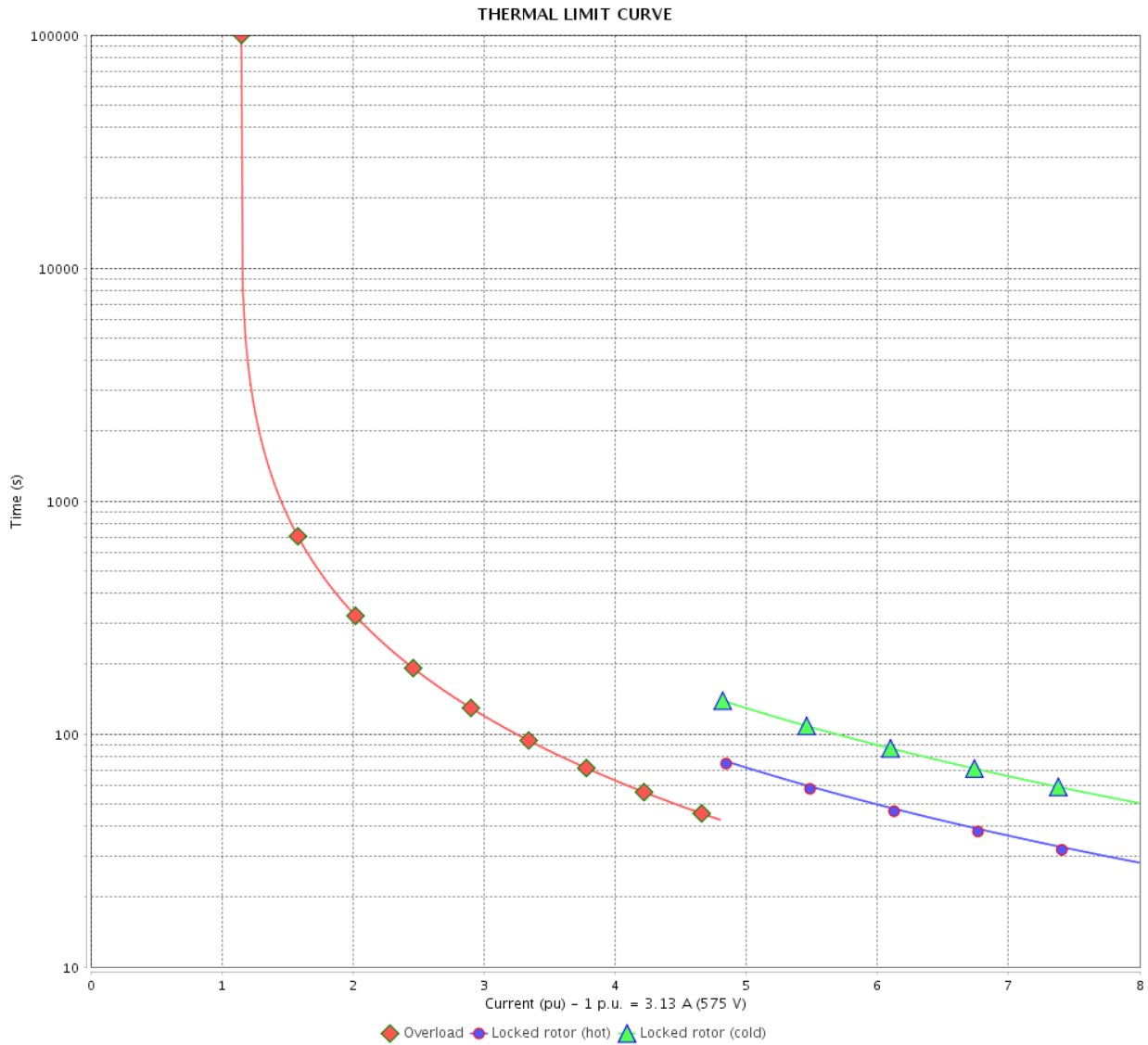
Rev.	Changes Summary	Performed	Checked	Date
Performed by			Page 5 / 7	Revision
Checked by				
Date	14/04/2022			

THERMAL LIMIT CURVE

Three Phase Induction Motor - Squirrel Cage



Customer : _____



Rev.	Changes Summary	Performed	Checked	Date
Performed by		Page 6 / 7		Revision
Checked by				
Date				

VFD OPERATION CURVE

Three Phase Induction Motor - Squirrel Cage

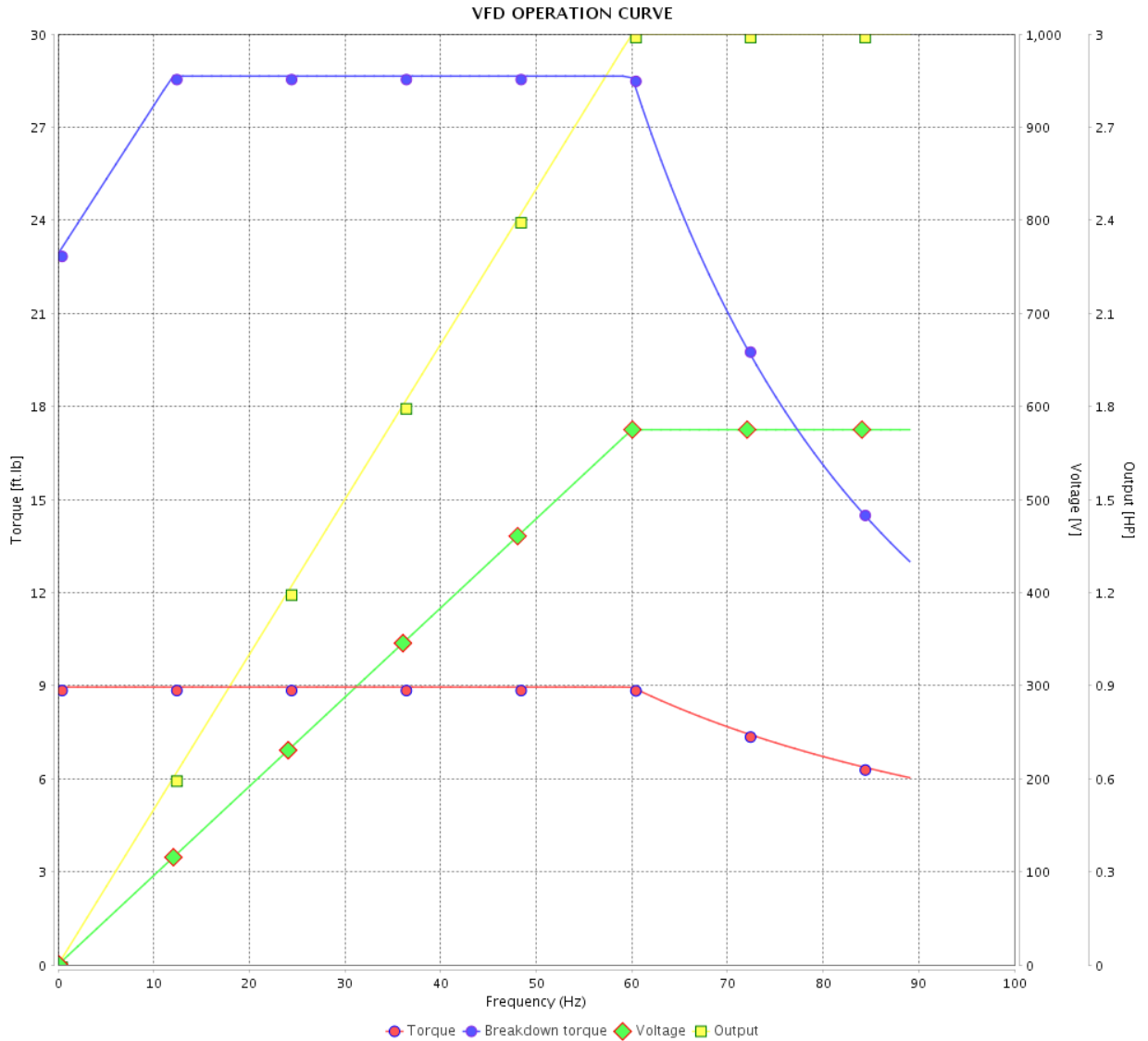


Customer :

Product line : NEMA Premium Efficiency Three-Phase

Product code : 14308685

Catalog # : 00318XT3H182JP



Performance : 575 V 60 Hz 4P

Rated current : 3.13 A
 LRC : 8.0
 Rated torque : 8.95 ft.lb
 Locked rotor torque : 250 %
 Breakdown torque : 320 %
 Rated speed : 1760 rpm

Moment of inertia (J) : 0.2781 sq.ft.lb
 Duty cycle : Cont.(S1)
 Insulation class : F
 Service factor : 1.15
 Temperature rise : 80 K
 Design : B

Rev.	Changes Summary	Performed	Checked	Date
Performed by				Page 7 / 7
Checked by				
Date	14/04/2022			

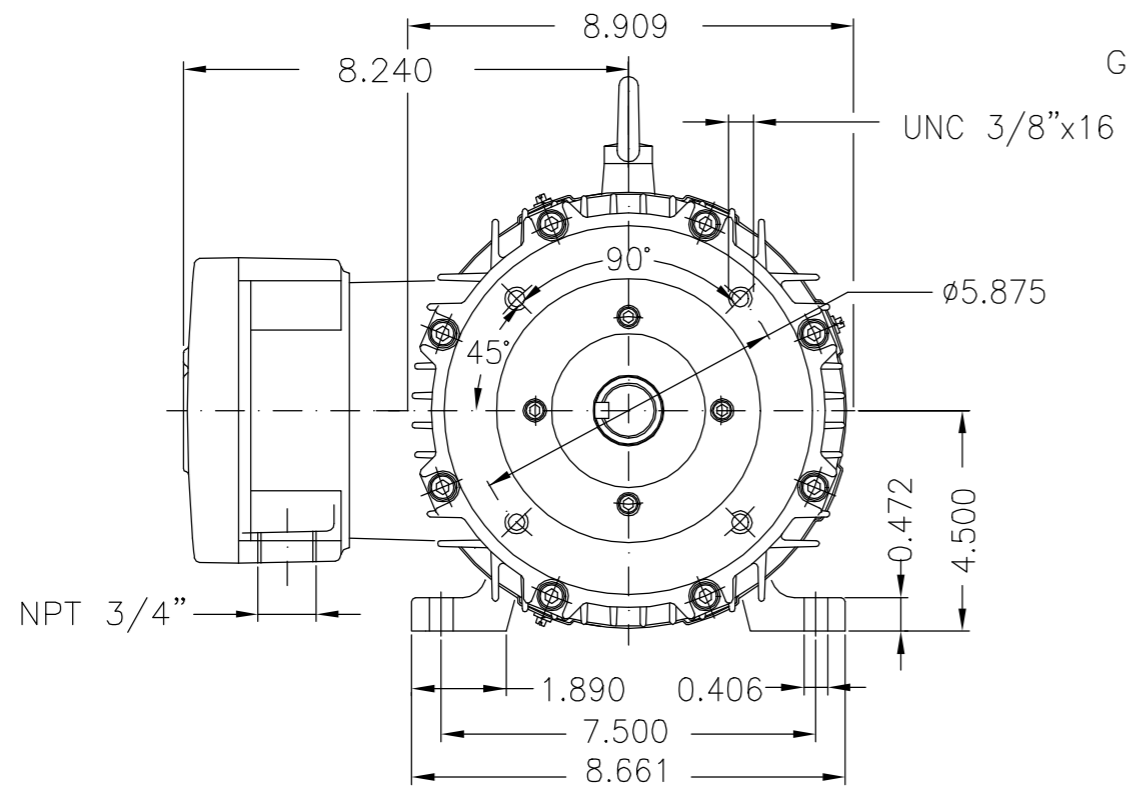
EIXO/SHAFT	
PADRÃO/STANDARD	
OPCIONAL/OPTIONAL	
ESPECIAL/SPECIAL	X

Dimensões em polegada
Dimensions in inches

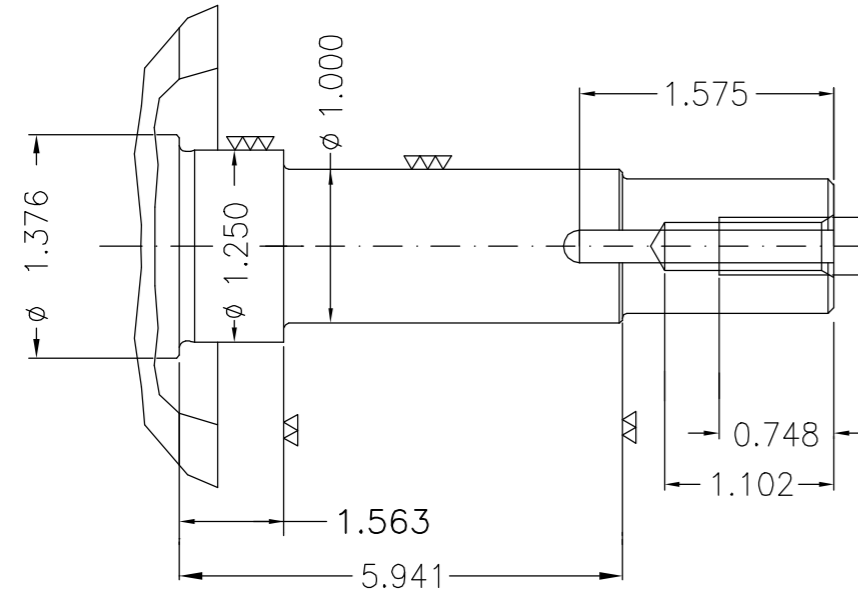
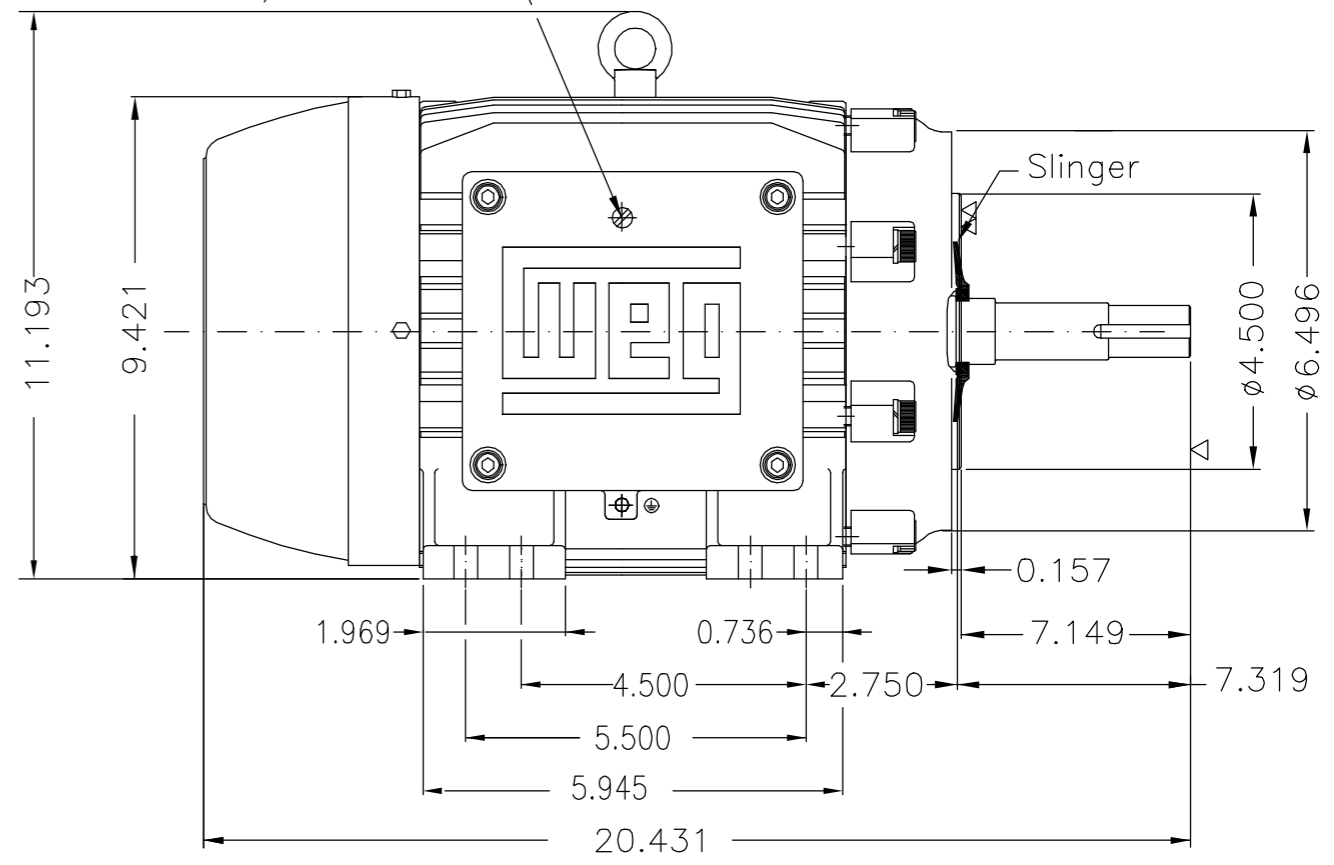
CERTIFIED WEG MOTORES
Certified document.
Not subject to changes.

THIS IS AN UPDATED REVISION, THE PREVIOUS ONE MUST BE DISREGARDED.

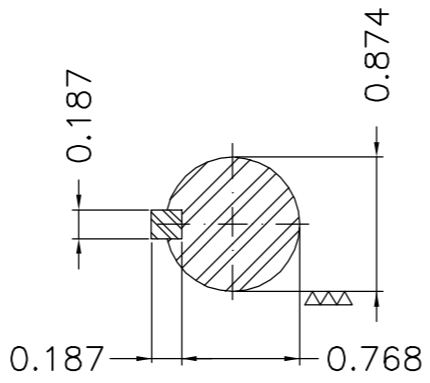
A
B
C
D
E



Grounding for leads 2-10 mm² / 14-7 AWG



DE Shaft End



EUNC 3/8"-16 WEG TBG253

Ponta de eixo JP / JP shaft end						
Tampa flangeada especial / Special flanged endshield						
Cor RAL 5009 / Color RAL 5009						
Plano de pintura 202P / Painting plan 202P						
Forma construtiva NEMA F-1 / Mounting NEMA F-1						
Forma construtiva B34D / Mounting B34R(D)						
WEG ELECTRIC CORPORATION - WEG						

500001594952		ALTERADO CONF. CLAIM 415204042	RICLAV	DALTONR	DALTONR	24.05.2019	05
500001501926		Corrigido representação dos pés	JAMORIM	DALTONR	DALTONR	13.09.2018	04
ECM	LOC	SUMMARY OF MODIFICATIONS	EXECUTED	CHECKED	RELEASED	DATE	VER
EXECUTED	NSCHMIDT	THREE-PHASE EXPLOSION PROOF MOTOR FRAME 182/4TZ IP55 TEFC	10005520452				
CHECKED	FERNANDOLUIS						
RELEASED	FERNANDOLUIS						
REL DT	07.02.2018	WMO	Jaragua do Sul	Product Engineering	SHEET	01 / 2	

3 HP 04 Poles 60Hz 414947131/0

A

UNCONTROLLED COPY RELEASED ZME A3

MADE IN BRAZIL


W21X NEMA
Premium

14308685



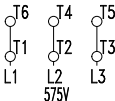
LISTED

CC029A

Inverter Duty Motor
Severe Duty

MODEL 00318XT3H182JP

PH 3	FR 182/4TZ		
HP(kW) 3.0(2.2)		HZ 60	IP55
V 575		A 3.13	
RPM 1760		NEMA NOM EFF 89.5%	
PF 0.79		SFA 3.60	DES B
INS CL F Δ T 80 K		SF 1.15	ENCL TEFC
DUTY CONT.		CODE K	ALT 1000 m.a.s.l.
AMB 40°C			


 → 6307-2RS MOBIL POLYREX EM
 → 6206-2RS

123 Lbs


 TEMP CODE T3C
 CSA/UL: Class I - Div. 1 - Groups C and D
 CSA: Class II - Div. 1 - Groups F and G
 CSA: Class I - Zone 1 - IIB

EXPLOSION PROOF MOTOR

FOR USE ON VPWM VFD 1000:1VT, 20:1CT, 1.0SF, T3C, AMB 40°C.