

DATA SHEET



Three Phase Induction Motor - Squirrel Cage

Customer :

Product line : NEMA Premium Efficiency Three-Phase
 Product code : 12675393
 Catalog # : 00336ET3H182T-S

Frame	: 182/4T	Locked rotor time	: 39s (cold) 22s (hot)
Output	: 3 HP (2.2 kW)	Temperature rise	: 80 K
Poles	: 2	Duty cycle	: Cont.(S1)
Frequency	: 60 Hz	Ambient temperature	: -20°C to +40°C
Rated voltage	: 575 V	Altitude	: 1000 m.a.s.l.
Rated current	: 2.94 A	Protection degree	: IP55
L. R. Amperes	: 25.8 A	Cooling method	: IC411 - TEFC
LRC	: 8.8x(Code K)	Mounting	: F-1
No load current	: 1.29 A	Rotation ¹	: Both (CW and CCW)
Rated speed	: 3515 rpm	Noise level ²	: 68.0 dB(A)
Slip	: 2.36 %	Starting method	: Direct On Line
Rated torque	: 4.48 ft.lb	Approx. weight ³	: 66.1 lb
Locked rotor torque	: 220 %		
Breakdown torque	: 300 %		
Insulation class	: F		
Service factor	: 1.15		
Moment of inertia (J)	: 0.1564 sq.ft.lb		
Design	: B		

Output	50%	75%	100%	Foundation loads	
Efficiency (%)	84.0	86.5	86.5	Max. traction	: 53 lb
Power Factor	0.71	0.82	0.87	Max. compression	: 119 lb

		<u>Drive end</u>	<u>Non drive end</u>
Bearing type	:	6206 ZZ	6205 ZZ
Sealing	:	V'Ring	Without Bearing Seal
Lubrication interval	:	-	-
Lubricant amount	:	-	-
Lubricant type	:	Mobil Polyrex EM	

Notes

This revision replaces and cancel the previous one, which must be eliminated.
 (1) Looking the motor from the shaft end.
 (2) Measured at 1m and with tolerance of +3dB(A).
 (3) Approximate weight subject to changes after manufacturing process.
 (4) At 100% of full load.

These are average values based on tests with sinusoidal power supply, subject to the tolerances stipulated in NEMA MG-1.

Rev.	Changes Summary	Performed	Checked	Date
Performed by				
Checked by			Page	Revision
Date	13/04/2022		1 / 6	

TORQUE AND CURRENT VS SPEED CURVE

Three Phase Induction Motor - Squirrel Cage



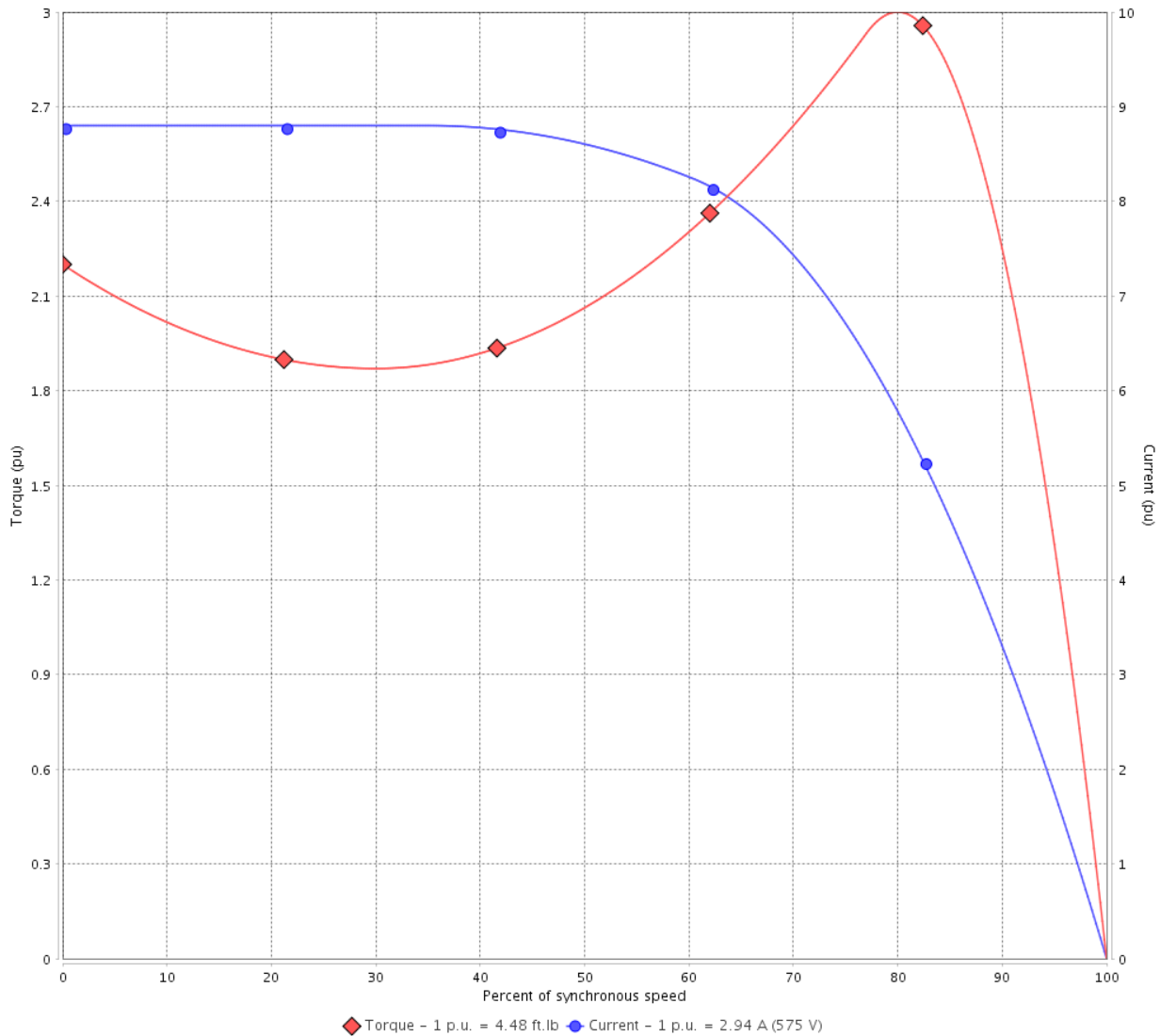
Customer :

Product line : NEMA Premium Efficiency Three-Phase

Product code : 12675393

Catalog # : 00336ET3H182T-S

TORQUE AND CURRENT VS SPEED CURVE



Performance : 575 V 60 Hz 2P

Rated current	: 2.94 A	Moment of inertia (J)	: 0.1564 sq.ft.lb
LRC	: 8.8	Duty cycle	: Cont.(S1)
Rated torque	: 4.48 ft.lb	Insulation class	: F
Locked rotor torque	: 220 %	Service factor	: 1.15
Breakdown torque	: 300 %	Temperature rise	: 80 K
Rated speed	: 3515 rpm	Design	: B

Locked rotor time : 39s (cold) 22s (hot)

Rev.	Changes Summary	Performed	Checked	Date
Performed by			Page 2 / 6	Revision
Checked by				
Date	13/04/2022			

LOAD PERFORMANCE CURVE

Three Phase Induction Motor - Squirrel Cage

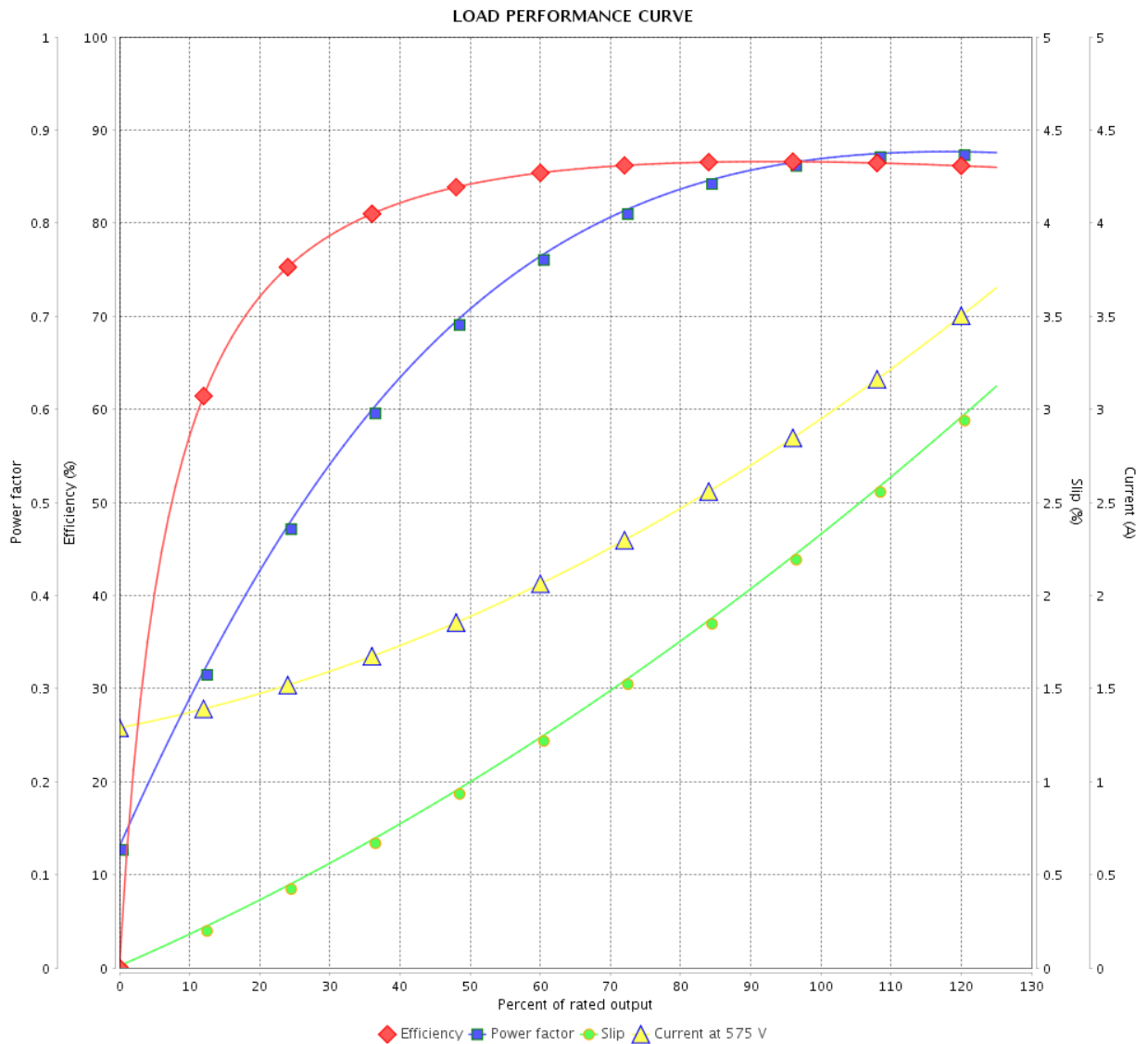


Customer : _____

Product line : NEMA Premium Efficiency Three-Phase

Product code : 12675393

Catalog # : 00336ET3H182T-S



Performance : 575 V 60 Hz 2P

Rated current : 2.94 A
 LRC : 8.8
 Rated torque : 4.48 ft.lb
 Locked rotor torque : 220 %
 Breakdown torque : 300 %
 Rated speed : 3515 rpm

Moment of inertia (J) : 0.1564 sq.ft.lb
 Duty cycle : Cont.(S1)
 Insulation class : F
 Service factor : 1.15
 Temperature rise : 80 K
 Design : B

Rev.	Changes Summary	Performed	Checked	Date
Performed by		Page		Revision
Checked by		3 / 6		
Date		13/04/2022		

THERMAL LIMIT CURVE



Three Phase Induction Motor - Squirrel Cage

Customer :

Product line : NEMA Premium Efficiency Three-Phase
Product code : 12675393
Catalog # : 00336ET3H182T-S

Performance : 575 V 60 Hz 2P

Rated current	: 2.94 A	Moment of inertia (J)	: 0.1564 sq.ft.lb
LRC	: 8.8	Duty cycle	: Cont.(S1)
Rated torque	: 4.48 ft.lb	Insulation class	: F
Locked rotor torque	: 220 %	Service factor	: 1.15
Breakdown torque	: 300 %	Temperature rise	: 80 K
Rated speed	: 3515 rpm	Design	: B

Heating constant

Cooling constant

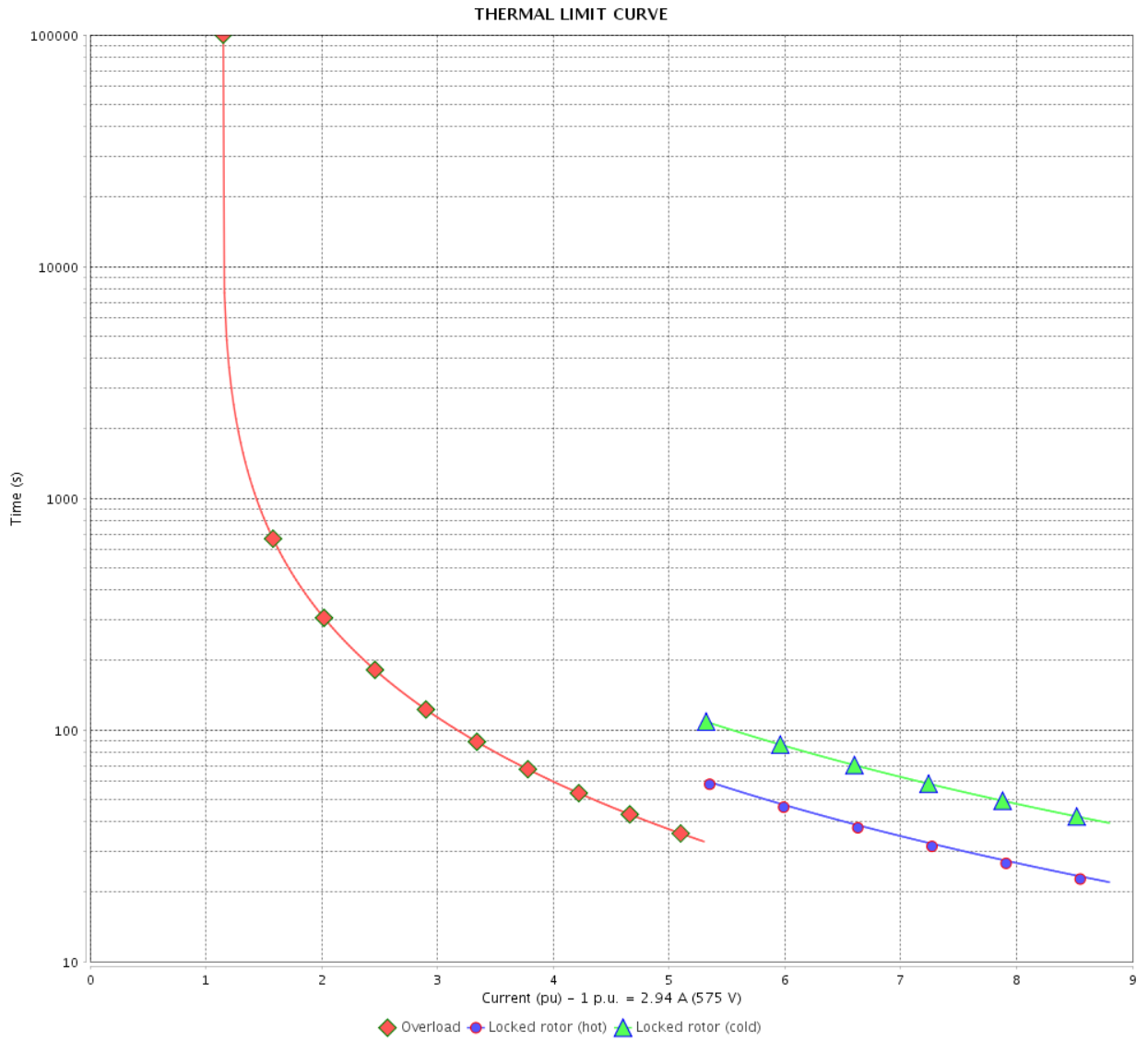
Rev.	Changes Summary	Performed	Checked	Date
Performed by				
Checked by			Page	Revision
Date	13/04/2022		4 / 6	

THERMAL LIMIT CURVE

Three Phase Induction Motor - Squirrel Cage



Customer : _____



Rev.	Changes Summary	Performed	Checked	Date
Performed by				
Checked by				
Date				
			Page 5 / 6	Revision

VFD OPERATION CURVE

Three Phase Induction Motor - Squirrel Cage

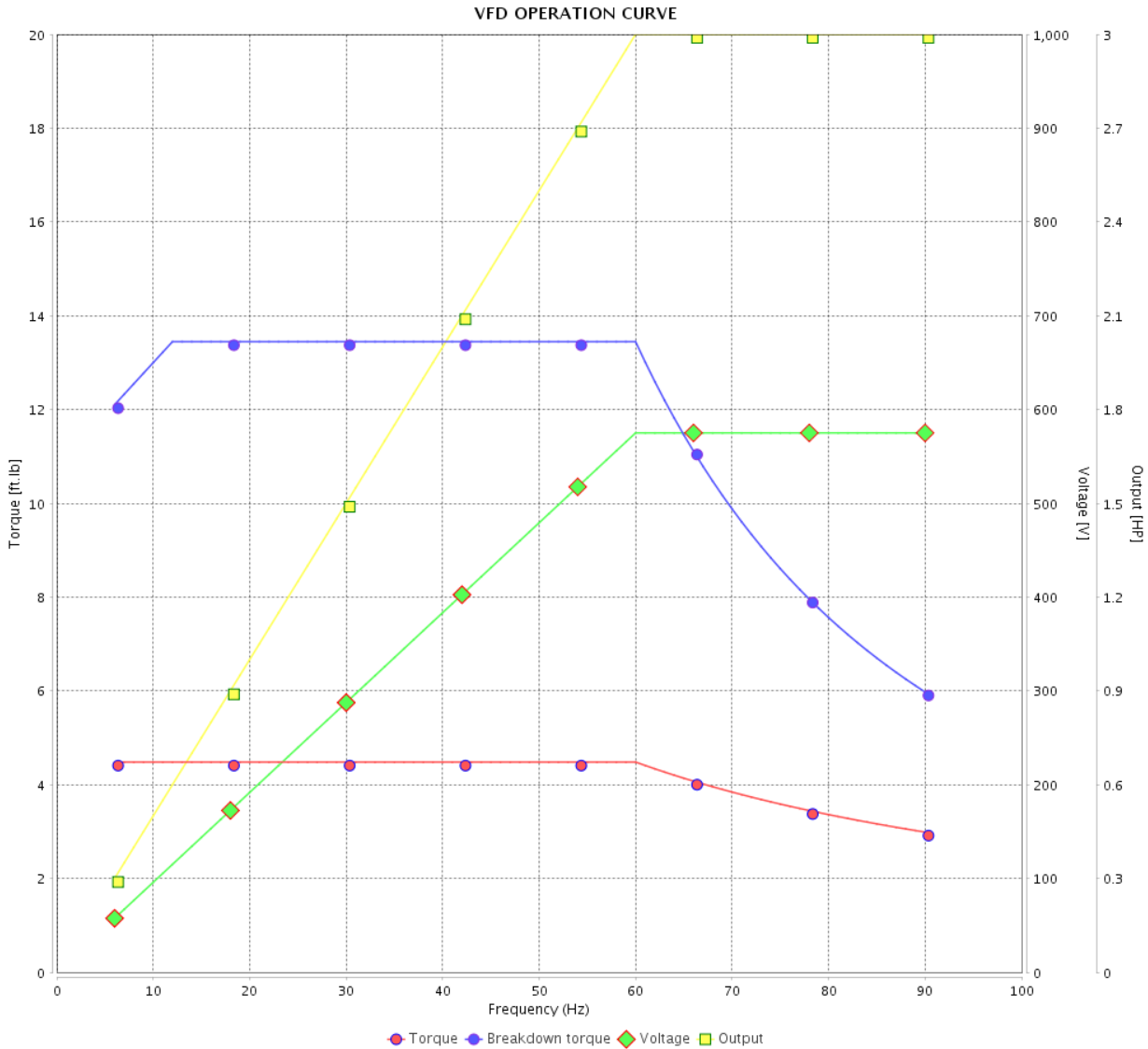


Customer : _____

Product line : NEMA Premium Efficiency Three-Phase

Product code : 12675393

Catalog # : 00336ET3H182T-S

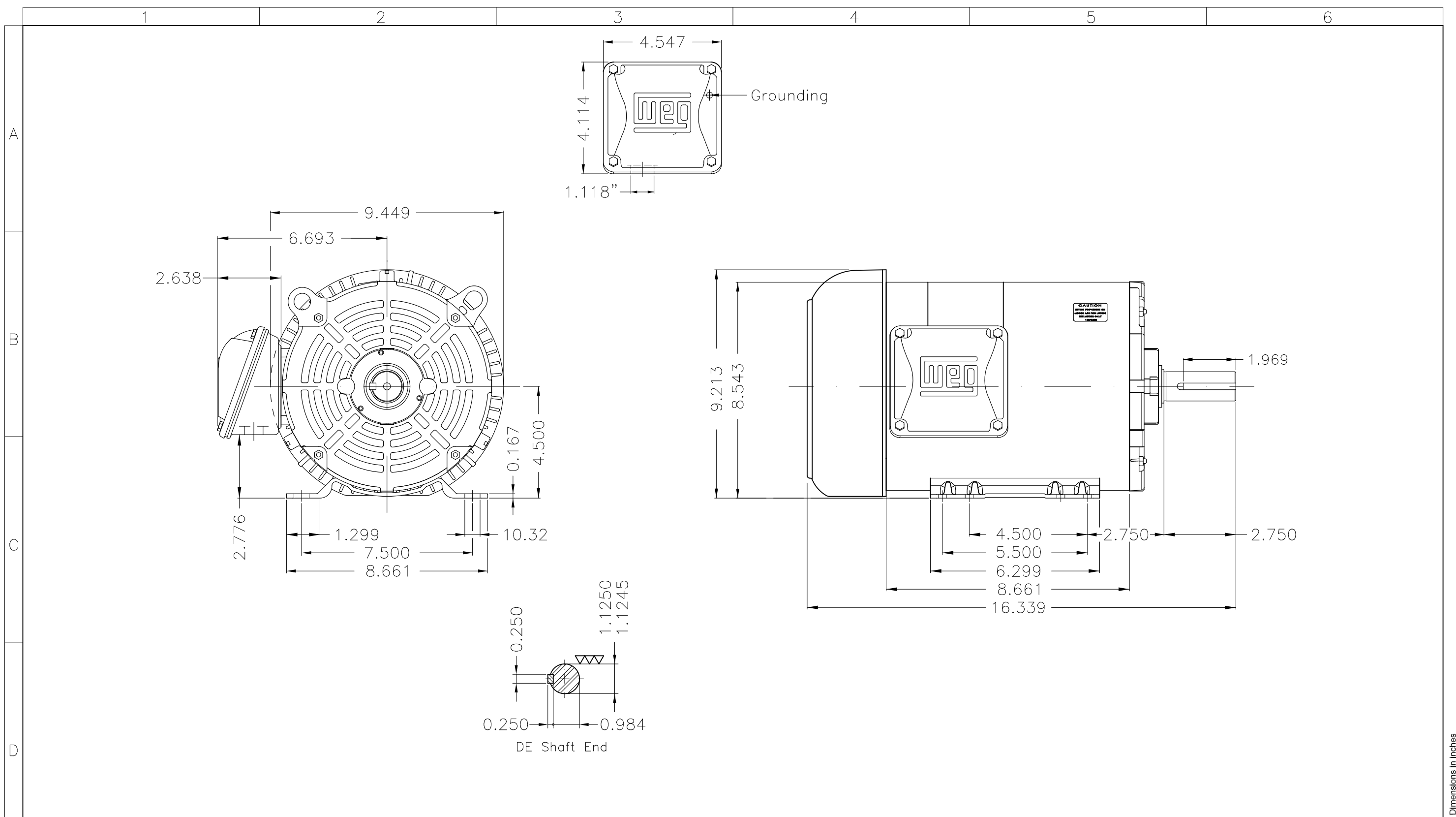


Performance : 575 V 60 Hz 2P

Rated current : 2.94 A
 LRC : 8.8
 Rated torque : 4.48 ft.lb
 Locked rotor torque : 220 %
 Breakdown torque : 300 %
 Rated speed : 3515 rpm

Moment of inertia (J) : 0.1564 sq.ft.lb
 Duty cycle : Cont.(S1)
 Insulation class : F
 Service factor : 1.15
 Temperature rise : 80 K
 Design : B

Rev.	Changes Summary	Performed	Checked	Date
Performed by			Page 6 / 6	Revision
Checked by				
Date	13/04/2022			



Color Munsell N 1 matte black										
Painting plan 207N										
Mounting F-1/B3R(D)										
ECM	LOC	SUMMARY OF MODIFICATIONS				EXECUTED	CHECKED	RELEASED	DATE	VER
EXECUTED	PIRWUSER	THREE PH. MOTOR ROLLED STEEL PREM. EFF.				PREVIEW	WDD	SHEET	1 / 1	
CHECKED		FRAME 182/4T IP55 TEFC								
RELEASED										
REL DT.		WMO	Jaragua do Sul	Product Engineering						

3 HP 02 Poles 60 Hz



NEMA
Premium



MADE IN MEXICO

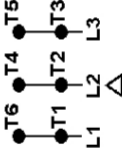
MAT: 12675393 CC029A
W01.TE0IC0X0N
HT003502NPW01
21FEB2022 S/N:

For 60Hz: Class I, Zone 2, IIC
Class I, Div.2, Gr. A,B,C,D - T3
Div 2 Inverter Duty (SF1.00)
CT 2:1/VT 1000:1

PH 3	Hz 60	HP 3.0
FR 182/4T		KW 2.2
DUTY CONT.		V 575
ALT 1000 m.a.s.l.		A 2.94
INS CL F AT 80K	IP55	SFA 3.38
AMB 40°C	DES B	SF 1.15
ENCL TEFC	CODE K	PF 0.87
		RPM 3515
		NEMA NOM. EFF 86.5%

For safe area-inverter duty motor For use on VPWM 1000:1 VT, 10:1 CT

DE 6206-ZZ ODE 6205-ZZ MOBIL POLYREX EM



T1-BLU
T2-WHT
T3-ORG
T4-YEL
T5-BLK
T6-GRY



INTERCHANGE ANY TWO LINE WIRES TO REVERSE THE ROTATION

WARNING: Motor must be grounded in accordance with local and national electrical codes to prevent serious electrical shocks. Disconnect power source before servicing unit.



AVERTISSEMENT: Le moteur doit être mis à la terre

conformément aux codes électriques locaux et nationaux afin d'éviter tout choc électrique grave. Déconnectez l'alimentation avant l'entretien de la machine.

