

DATA SHEET



Three Phase Induction Motor - Squirrel Cage

Customer :		
Product line	: NEMA Premium Efficiency Three-Phase	
Product code :	12938619	
Catalog # :	00518ET3E184T-SRT	
Frame	: 182/4T	
Insulation class	: F	
Duty cycle	: Cont.(S1)	
Ambient temperature	: -20°C to +40°C	
Altitude	: 1000 m.a.s.l.	
Protection degree	: IP55	
Design	: B	
Cooling method	: IC411 - TEFC	
Mounting	: F-1	
Rotation ¹	: Both (CW and CCW)	
Starting method	: Direct On Line	
Approx. weight ²	: 75.1 lb	
Moment of inertia (J)	: 0.3080 sq.ft.lb	
Output [HP]	5	
Poles	4	
Frequency [Hz]	60	
Rated voltage [V]	230/460	
Rated current [A]	13.0/6.49	
L. R. Amperes [A]	90.9/45.4	
LRC [A]	7.0x(Code J)	
No load current [A]	6.89/3.44	
Rated speed [RPM]	1750	
Slip [%]	2.78	
Rated torque [ft.lb]	15.0	
Locked rotor torque [%]	220	
Breakdown torque [%]	300	
Service factor	1.15	
Temperature rise	80 K	
Locked rotor time	28s (cold) 16s (hot)	
Noise level ²	56.0 dB(A)	
Efficiency (%)	25%	88.2
	50%	88.5
	75%	89.5
	100%	89.5
Power Factor	25%	0.35
	50%	0.60
	75%	0.73
	100%	0.80
Bearing type	: <u>Drive end</u> 6206 ZZ <u>Non drive end</u> 6205 ZZ	
Sealing	: V'Ring Without Bearing Seal	
Lubrication interval	: -	
Lubricant amount	: -	
Lubricant type	: Mobil Polyrex EM	
Foundation loads	Max. traction : 266 lb	
	Max. compression : 341 lb	
Notes USABLE @208V 14.4A SF 1.00 SFA 14.4A		
This revision replaces and cancel the previous one, which must be eliminated. (1) Looking the motor from the shaft end. (2) Measured at 1m and with tolerance of +3dB(A). (3) Approximate weight subject to changes after manufacturing process. (4) At 100% of full load.		
These are average values based on tests with sinusoidal power supply, subject to the tolerances stipulated in NEMA MG-1.		
Rev.	Changes Summary	
Performed by	Performed	
Checked by	Checked	
Date	Date	
13/04/2022		
Page	Revision	
1 / 16		

TORQUE AND CURRENT VS SPEED CURVE

Three Phase Induction Motor - Squirrel Cage



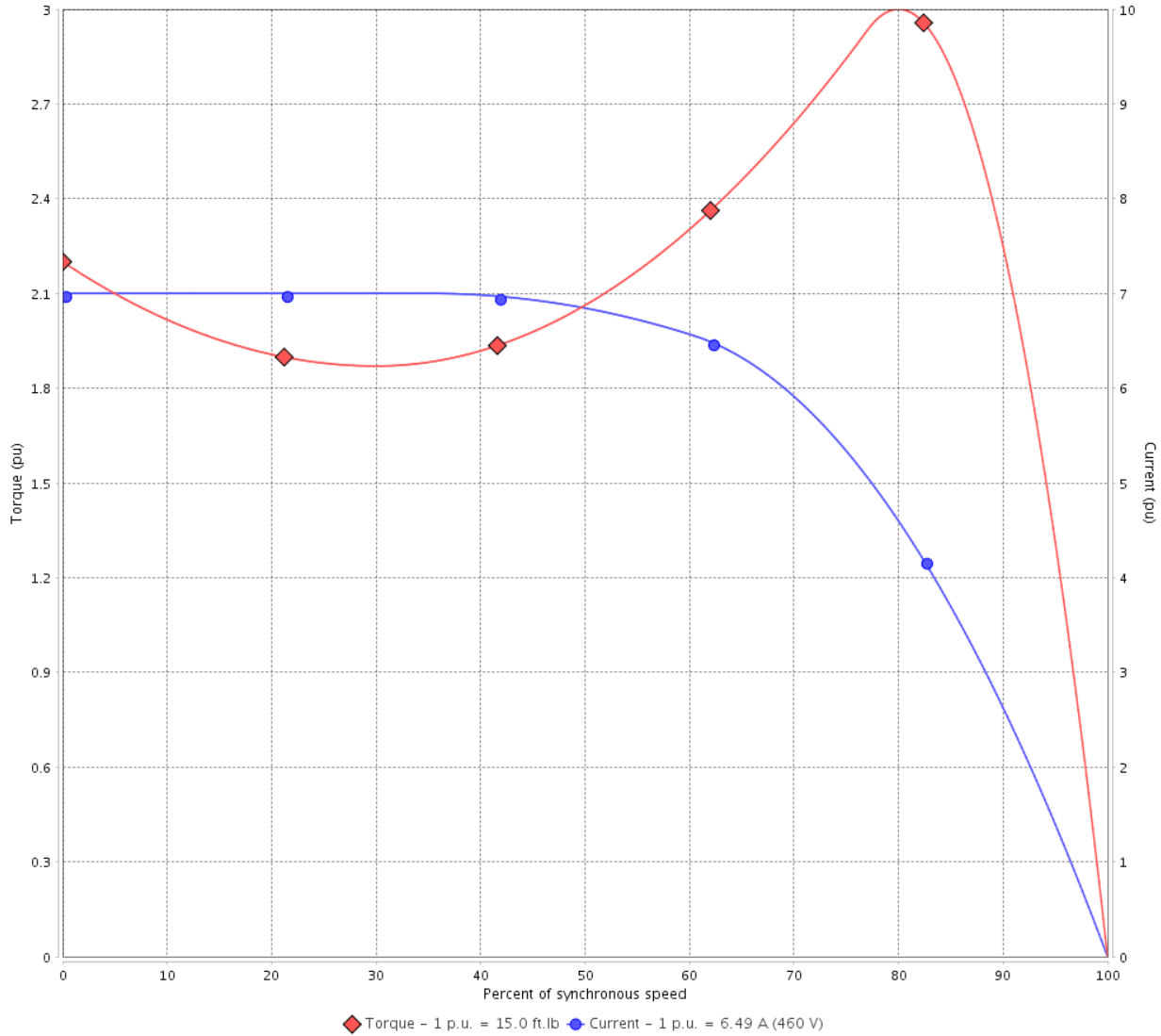
Customer :

Product line : NEMA Premium Efficiency Three-Phase

Product code : 12938619

Catalog # : 00518ET3E184T-SRT

TORQUE AND CURRENT VS SPEED CURVE



Performance : 230/460 V 60 Hz 4P

Rated current : 13.0/6.49 A
 LRC : 7.0
 Rated torque : 15.0 ft.lb
 Locked rotor torque : 220 %
 Breakdown torque : 300 %
 Rated speed : 1750 rpm

Moment of inertia (J) : 0.3080 sq.ft.lb
 Duty cycle : Cont.(S1)
 Insulation class : F
 Service factor : 1.15
 Temperature rise : 80 K
 Design : B

Locked rotor time : 28s (cold) 16s (hot)

Rev.	Changes Summary	Performed	Checked	Date
Performed by			Page 2 / 16	Revision
Checked by				
Date	13/04/2022			

TORQUE AND CURRENT VS SPEED CURVE



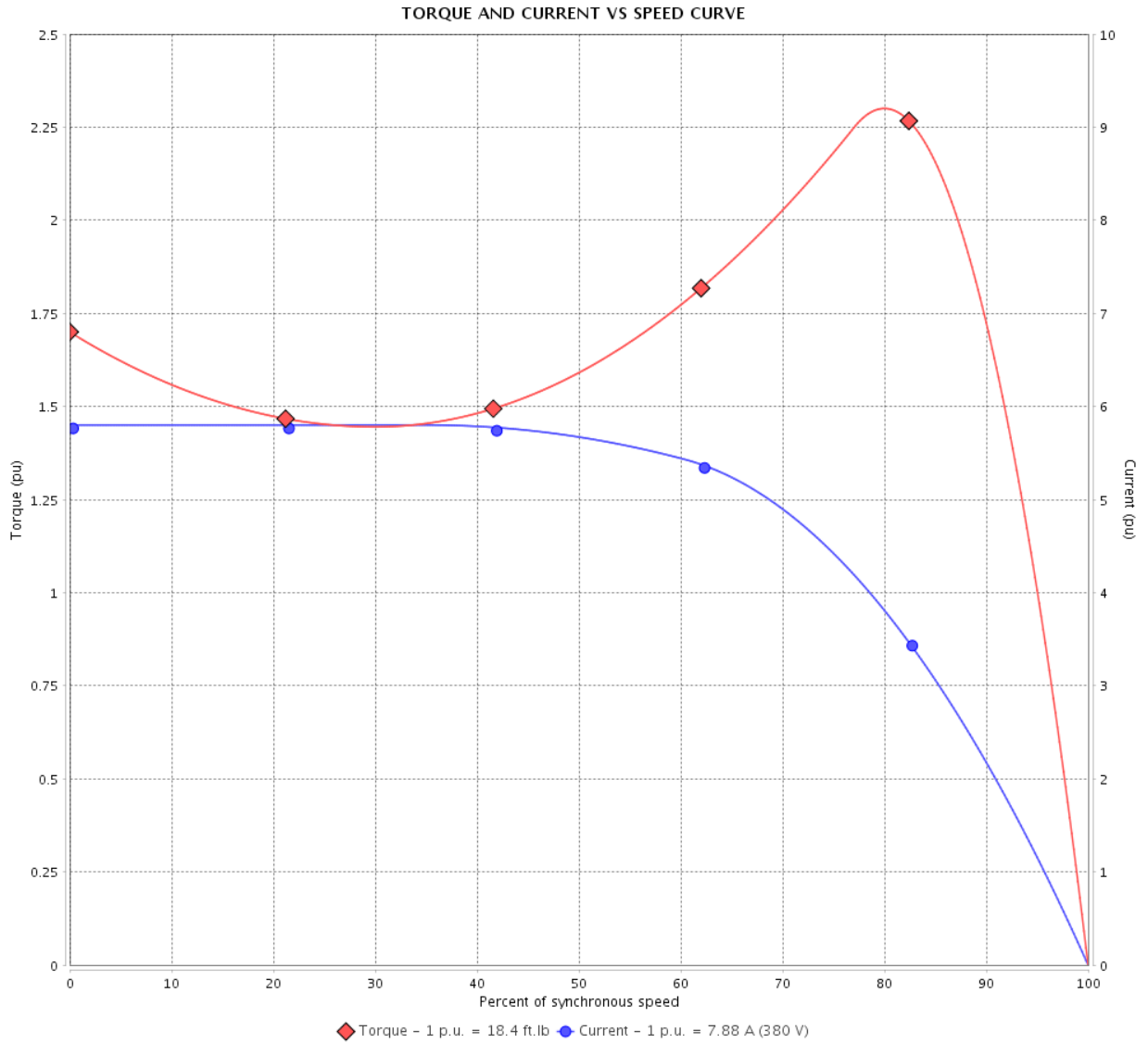
Three Phase Induction Motor - Squirrel Cage

Customer :

Product line : NEMA Premium Efficiency Three-Phase

Product code : 12938619

Catalog # : 00518ET3E184T-SRT



Performance : 190/380 V 50 Hz 4P IE1

Rated current	: 15.8/7.88 A	Moment of inertia (J)	: 0.3080 sq.ft.lb
LRC	: 5.8	Duty cycle	: Cont.(S1)
Rated torque	: 18.4 ft.lb	Insulation class	: F
Locked rotor torque	: 170 %	Service factor	: 1.00
Breakdown torque	: 229 %	Temperature rise	: 105 K
Rated speed	: 1425 rpm	Design	: B

Locked rotor time : 0s (cold) 0s (hot)

Rev.	Changes Summary	Performed	Checked	Date
Performed by			Page 3 / 16	Revision
Checked by				
Date	13/04/2022			

TORQUE AND CURRENT VS SPEED CURVE

Three Phase Induction Motor - Squirrel Cage



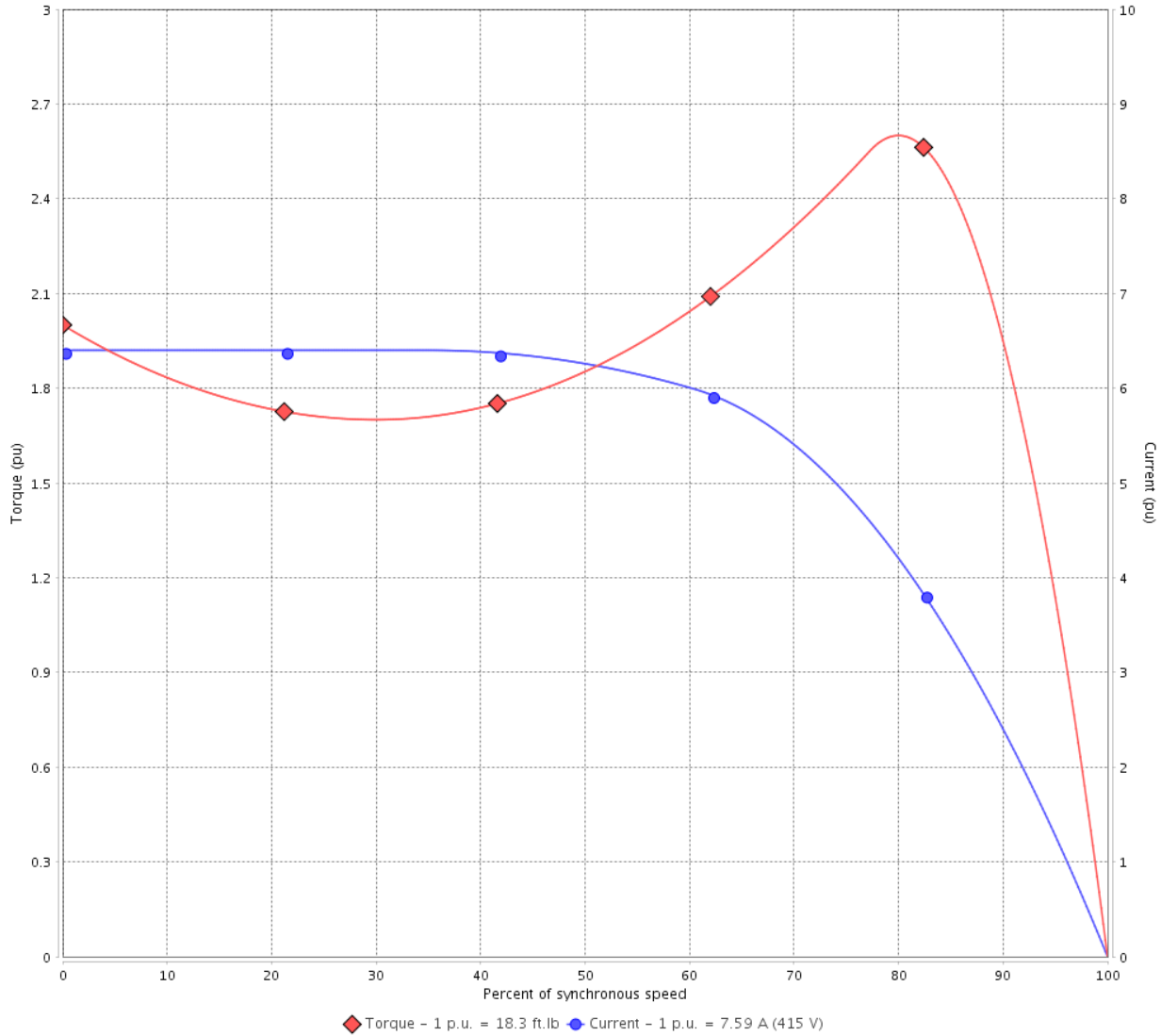
Customer :

Product line : NEMA Premium Efficiency Three-Phase

Product code : 12938619

Catalog # : 00518ET3E184T-SRT

TORQUE AND CURRENT VS SPEED CURVE



Performance : 220/415 V 50 Hz 4P IE1

Rated current	: 14.3/7.59 A	Moment of inertia (J)	: 0.3080 sq.ft.lb
LRC	: 6.4	Duty cycle	: Cont.(S1)
Rated torque	: 18.3 ft.lb	Insulation class	: F
Locked rotor torque	: 200 %	Service factor	: 1.00
Breakdown torque	: 260 %	Temperature rise	: 105 K
Rated speed	: 1435 rpm	Design	: B

Locked rotor time : 0s (cold) 0s (hot)

Rev.	Changes Summary	Performed	Checked	Date
Performed by			Page 4 / 16	Revision
Checked by				
Date	13/04/2022			

LOAD PERFORMANCE CURVE

Three Phase Induction Motor - Squirrel Cage

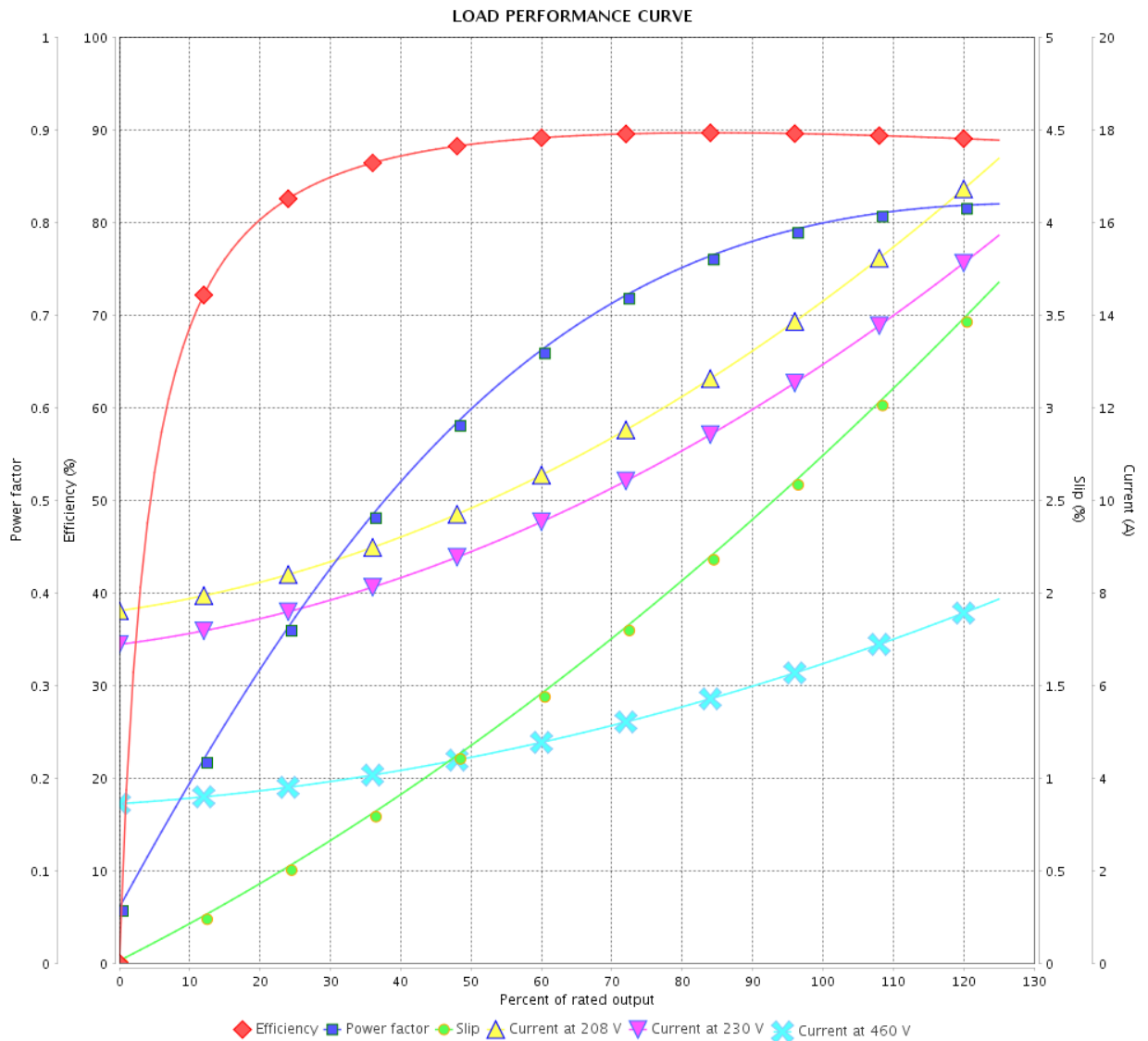


Customer :

Product line : NEMA Premium Efficiency Three-Phase

Product code : 12938619

Catalog # : 00518ET3E184T-SRT



Performance : 230/460 V 60 Hz 4P

Rated current : 13.0/6.49 A
 LRC : 7.0
 Rated torque : 15.0 ft.lb
 Locked rotor torque : 220 %
 Breakdown torque : 300 %
 Rated speed : 1750 rpm

Moment of inertia (J) : 0.3080 sq.ft.lb
 Duty cycle : Cont.(S1)
 Insulation class : F
 Service factor : 1.15
 Temperature rise : 80 K
 Design : B

Rev.	Changes Summary	Performed	Checked	Date
Performed by			Page	Revision
Checked by				
Date				

LOAD PERFORMANCE CURVE

Three Phase Induction Motor - Squirrel Cage



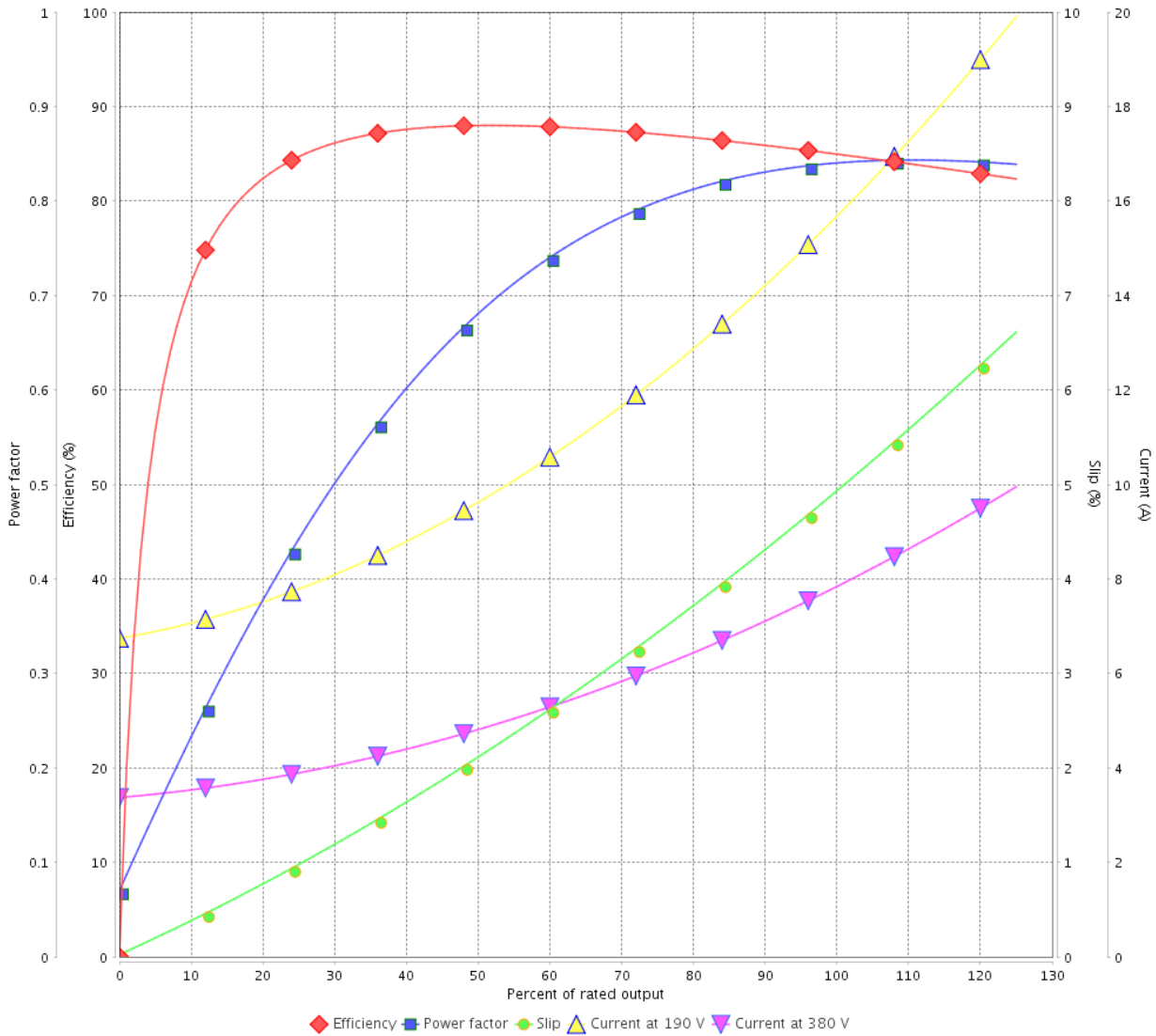
Customer :

Product line : NEMA Premium Efficiency Three-Phase

Product code : 12938619

Catalog # : 00518ET3E184T-SRT

LOAD PERFORMANCE CURVE



Performance : 190/380 V 50 Hz 4P IE1

Rated current : 15.8/7.88 A
 LRC : 5.8
 Rated torque : 18.4 ft.lb
 Locked rotor torque : 170 %
 Breakdown torque : 229 %
 Rated speed : 1425 rpm

Moment of inertia (J) : 0.3080 sq.ft.lb
 Duty cycle : Cont.(S1)
 Insulation class : F
 Service factor : 1.00
 Temperature rise : 105 K
 Design : B

Rev.	Changes Summary	Performed	Checked	Date
Performed by			Page 6 / 16	Revision
Checked by				
Date	13/04/2022			

LOAD PERFORMANCE CURVE

Three Phase Induction Motor - Squirrel Cage

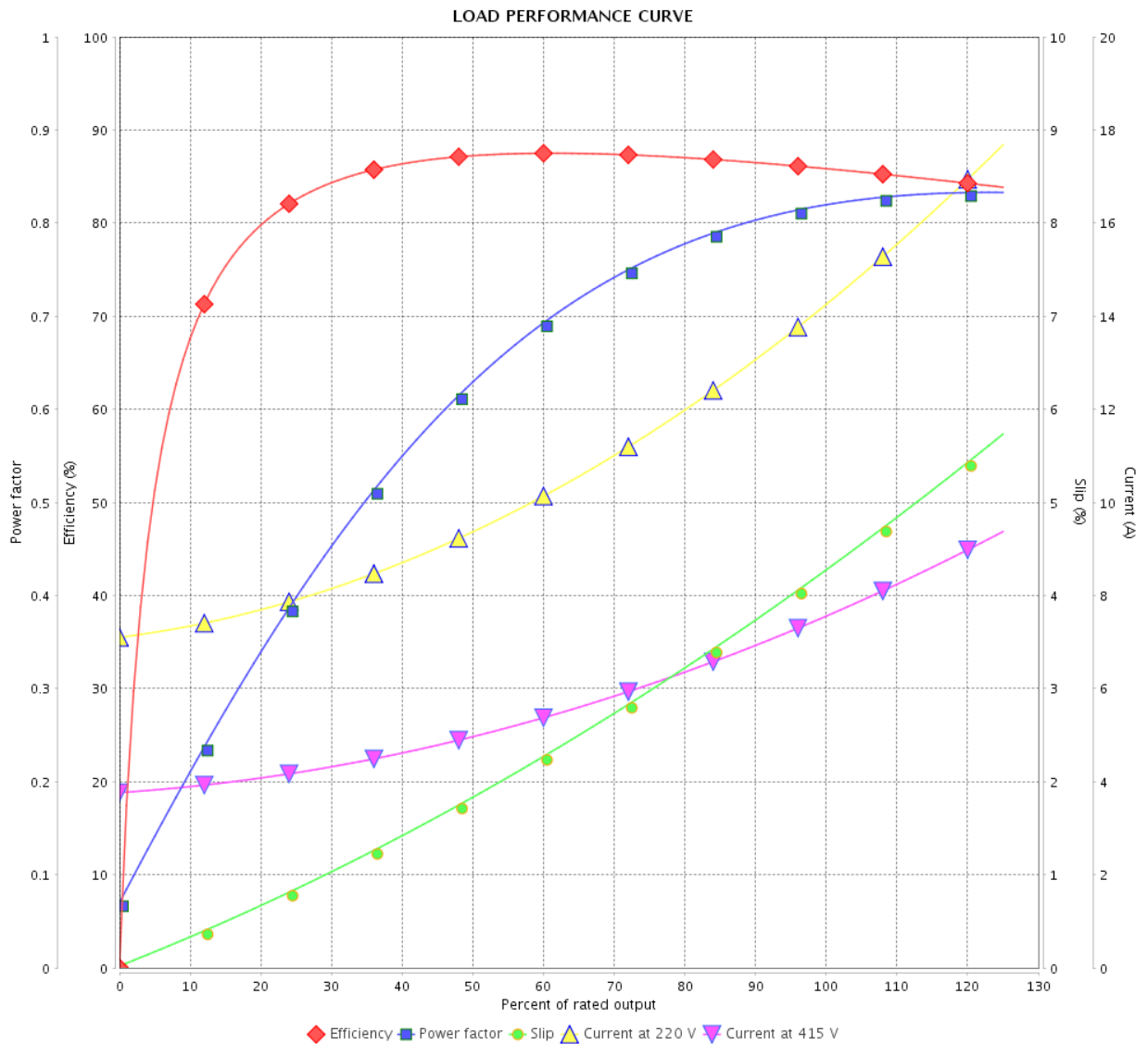


Customer :

Product line : NEMA Premium Efficiency Three-Phase

Product code : 12938619

Catalog # : 00518ET3E184T-SRT



Performance : 220/415 V 50 Hz 4P IE1

Rated current : 14.3/7.59 A
 LRC : 6.4
 Rated torque : 18.3 ft.lb
 Locked rotor torque : 200 %
 Breakdown torque : 260 %
 Rated speed : 1435 rpm

Moment of inertia (J) : 0.3080 sq.ft.lb
 Duty cycle : Cont.(S1)
 Insulation class : F
 Service factor : 1.00
 Temperature rise : 105 K
 Design : B

Rev.	Changes Summary	Performed	Checked	Date
Performed by			Page	Revision
Checked by			7 / 16	
Date	13/04/2022			

THERMAL LIMIT CURVE



Three Phase Induction Motor - Squirrel Cage

Customer :

Product line : NEMA Premium Efficiency Three-Phase
Product code : 12938619
Catalog # : 00518ET3E184T-SRT

Performance : 230/460 V 60 Hz 4P

Rated current	: 13.0/6.49 A	Moment of inertia (J)	: 0.3080 sq.ft.lb
LRC	: 7.0	Duty cycle	: Cont.(S1)
Rated torque	: 15.0 ft.lb	Insulation class	: F
Locked rotor torque	: 220 %	Service factor	: 1.15
Breakdown torque	: 300 %	Temperature rise	: 80 K
Rated speed	: 1750 rpm	Design	: B

Heating constant

Cooling constant

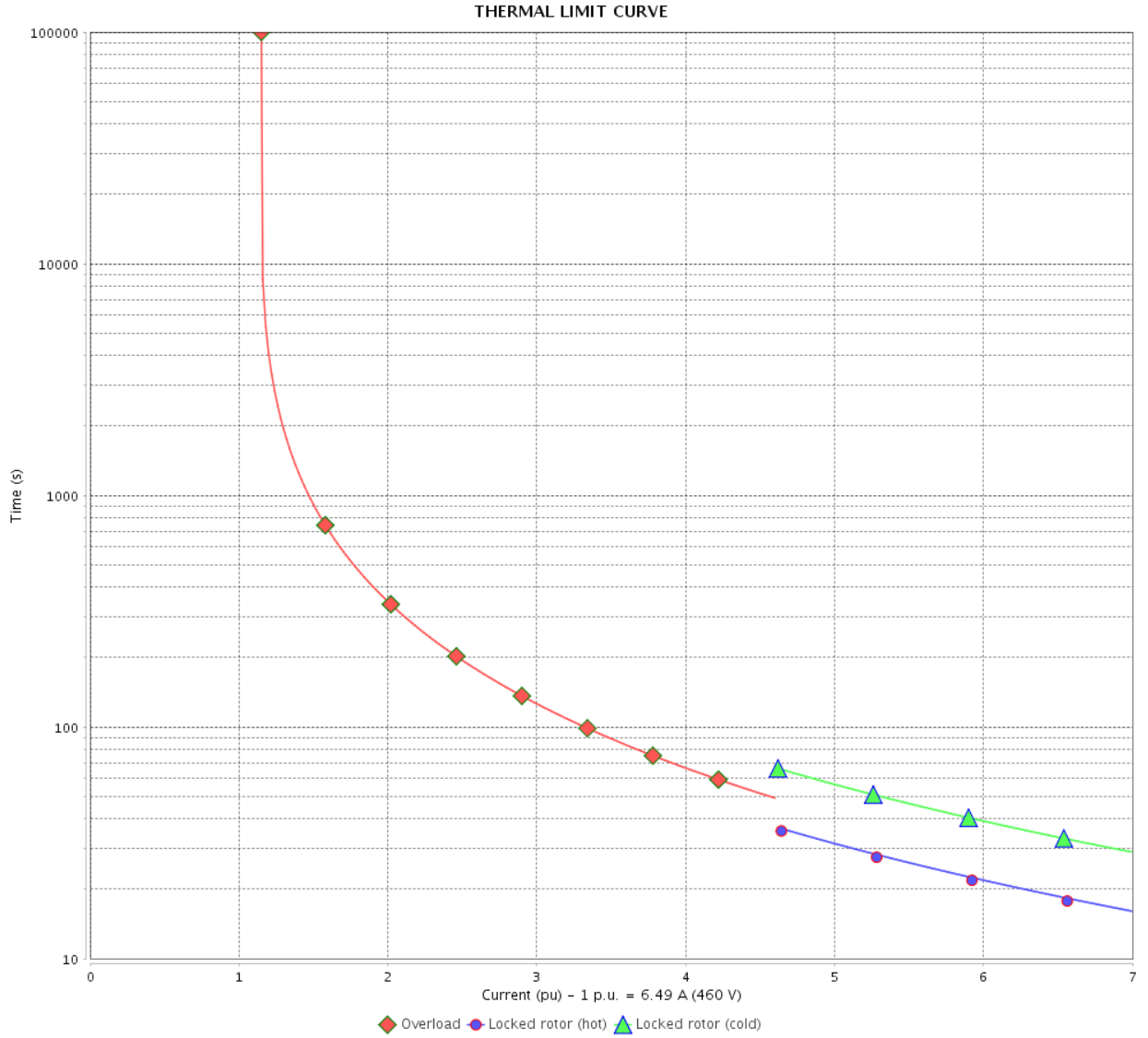
Rev.	Changes Summary	Performed	Checked	Date
Performed by				
Checked by			Page	Revision
Date	13/04/2022		8 / 16	

THERMAL LIMIT CURVE

Three Phase Induction Motor - Squirrel Cage



Customer : _____



Rev.	Changes Summary	Performed	Checked	Date
Performed by				
Checked by				
Date				
		Page	Revision	
		9 / 16		

THERMAL LIMIT CURVE

Three Phase Induction Motor - Squirrel Cage



Customer :

Product line : NEMA Premium Efficiency Three-Phase
Product code : 12938619
Catalog # : 00518ET3E184T-SRT

Performance : 190/380 V 50 Hz 4P IE1

Rated current	: 15.8/7.88 A	Moment of inertia (J)	: 0.3080 sq.ft.lb
LRC	: 5.8	Duty cycle	: Cont.(S1)
Rated torque	: 18.4 ft.lb	Insulation class	: F
Locked rotor torque	: 170 %	Service factor	: 1.00
Breakdown torque	: 229 %	Temperature rise	: 105 K
Rated speed	: 1425 rpm	Design	: B

Heating constant

Cooling constant

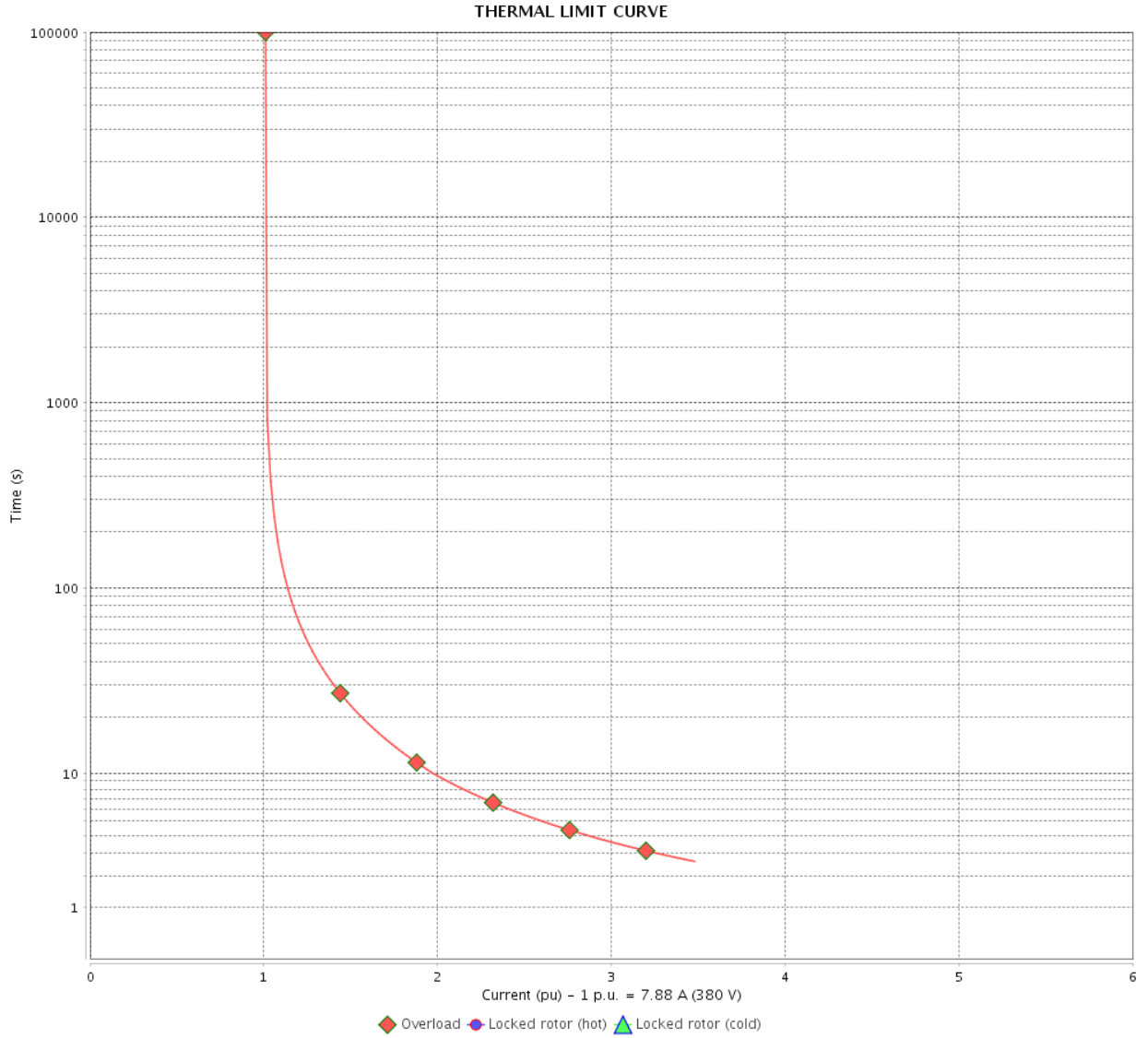
Rev.	Changes Summary	Performed	Checked	Date
Performed by				
Checked by			Page	Revision
Date	13/04/2022		10 / 16	

THERMAL LIMIT CURVE

Three Phase Induction Motor - Squirrel Cage



Customer : _____



Rev.	Changes Summary	Performed	Checked	Date
Performed by		Page		Revision
Checked by		11 / 16		
Date		13/04/2022		

THERMAL LIMIT CURVE



Three Phase Induction Motor - Squirrel Cage

Customer :

Product line : NEMA Premium Efficiency Three-Phase
Product code : 12938619
Catalog # : 00518ET3E184T-SRT

Performance : 220/415 V 50 Hz 4P IE1

Rated current	: 14.3/7.59 A	Moment of inertia (J)	: 0.3080 sq.ft.lb
LRC	: 6.4	Duty cycle	: Cont.(S1)
Rated torque	: 18.3 ft.lb	Insulation class	: F
Locked rotor torque	: 200 %	Service factor	: 1.00
Breakdown torque	: 260 %	Temperature rise	: 105 K
Rated speed	: 1435 rpm	Design	: B

Heating constant

Cooling constant

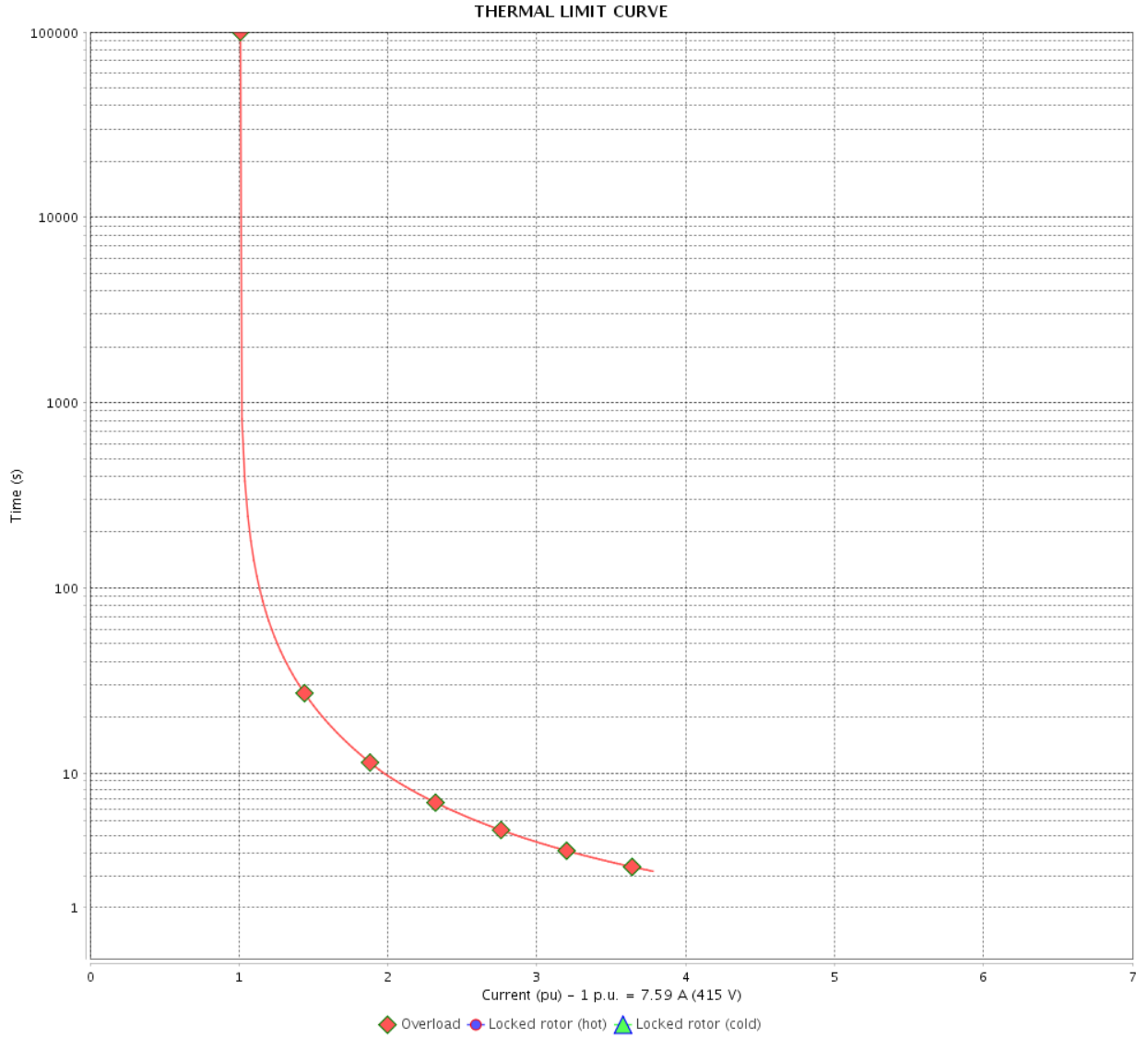
Rev.	Changes Summary	Performed	Checked	Date
Performed by				
Checked by			Page	Revision
Date	13/04/2022		12 / 16	

THERMAL LIMIT CURVE

Three Phase Induction Motor - Squirrel Cage



Customer : _____



Rev.	Changes Summary	Performed	Checked	Date
Performed by		Page		Revision
Checked by		13 / 16		
Date		13/04/2022		

VFD OPERATION CURVE

Three Phase Induction Motor - Squirrel Cage



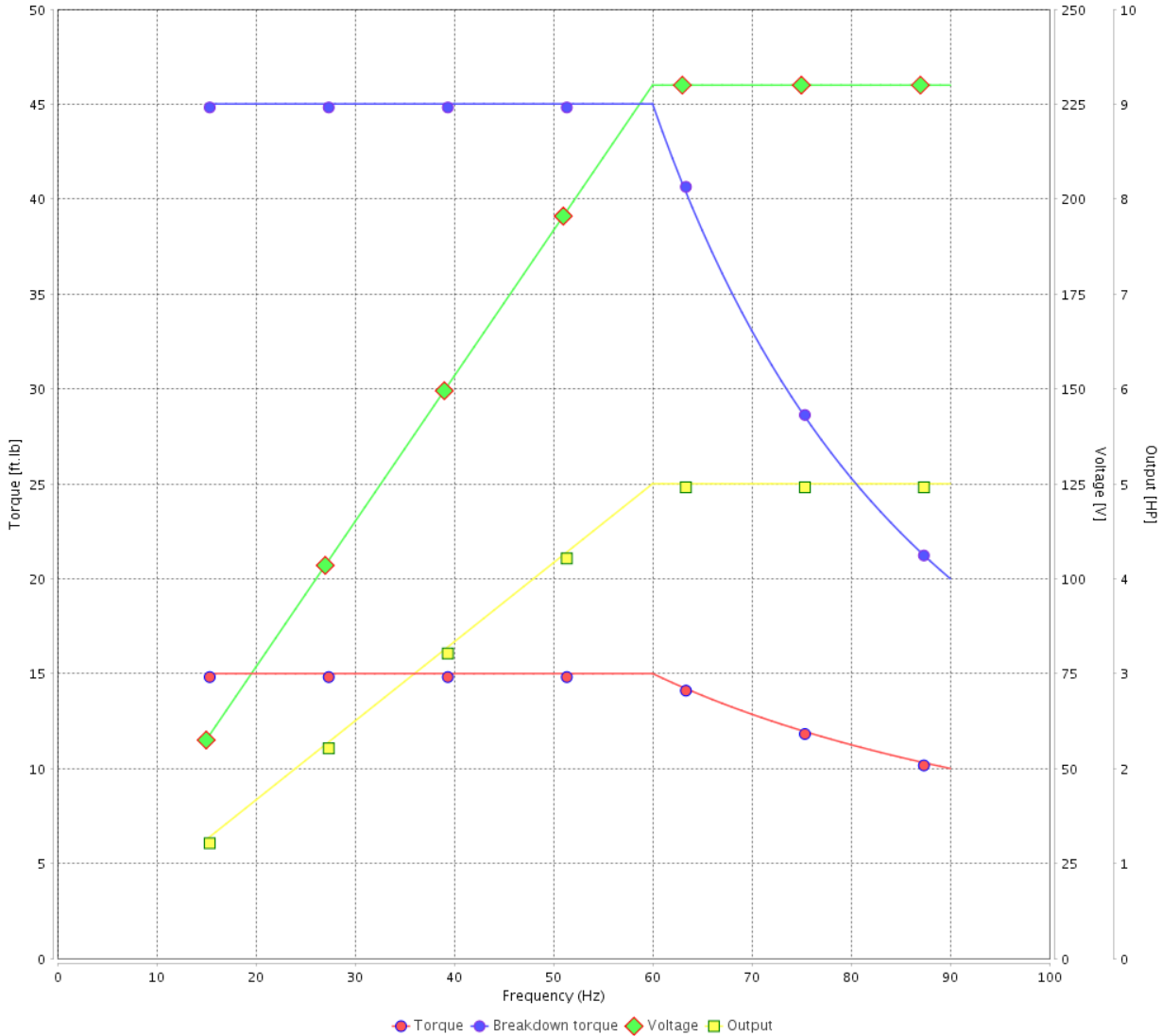
Customer :

Product line : NEMA Premium Efficiency Three-Phase

Product code : 12938619

Catalog # : 00518ET3E184T-SRT

VFD OPERATION CURVE



Performance : 230/460 V 60 Hz 4P

Rated current : 13.0/6.49 A
 LRC : 7.0
 Rated torque : 15.0 ft.lb
 Locked rotor torque : 220 %
 Breakdown torque : 300 %
 Rated speed : 1750 rpm

Moment of inertia (J) : 0.3080 sq.ft.lb
 Duty cycle : Cont.(S1)
 Insulation class : F
 Service factor : 1.15
 Temperature rise : 80 K
 Design : B

Rev.	Changes Summary	Performed	Checked	Date
Performed by			Page 14 / 16	Revision
Checked by				
Date	13/04/2022			

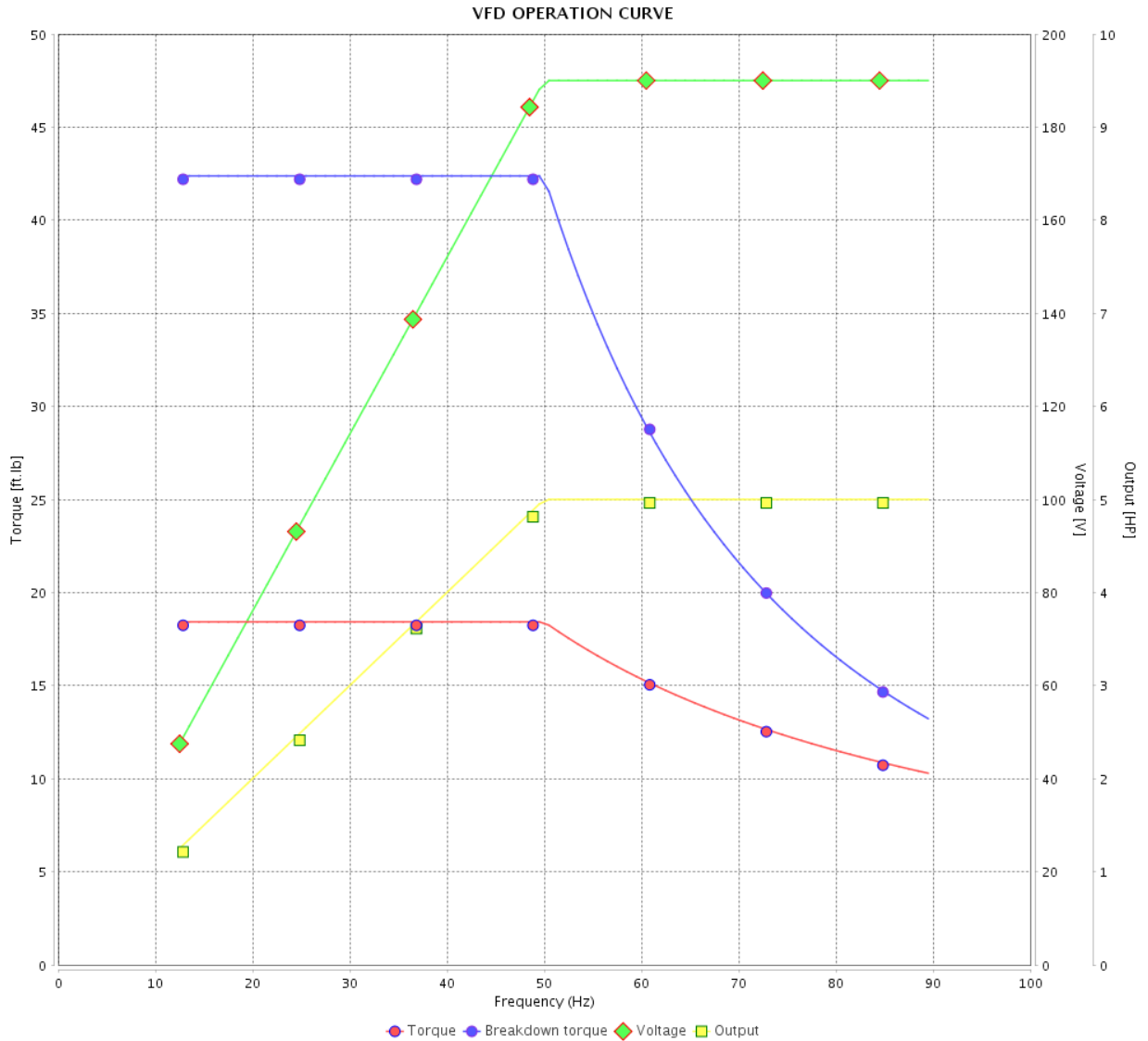
VFD OPERATION CURVE

Three Phase Induction Motor - Squirrel Cage



Customer :

Product line : NEMA Premium Efficiency Three-Phase
 Product code : 12938619
 Catalog # : 00518ET3E184T-SRT



Performance : 190/380 V 50 Hz 4P IE1

Rated current : 15.8/7.88 A
 LRC : 5.8
 Rated torque : 18.4 ft.lb
 Locked rotor torque : 170 %
 Breakdown torque : 229 %
 Rated speed : 1425 rpm

Moment of inertia (J) : 0.3080 sq.ft.lb
 Duty cycle : Cont.(S1)
 Insulation class : F
 Service factor : 1.00
 Temperature rise : 105 K
 Design : B

Rev.	Changes Summary	Performed	Checked	Date
Performed by			Page	Revision
Checked by			15 / 16	
Date	13/04/2022			

VFD OPERATION CURVE

Three Phase Induction Motor - Squirrel Cage



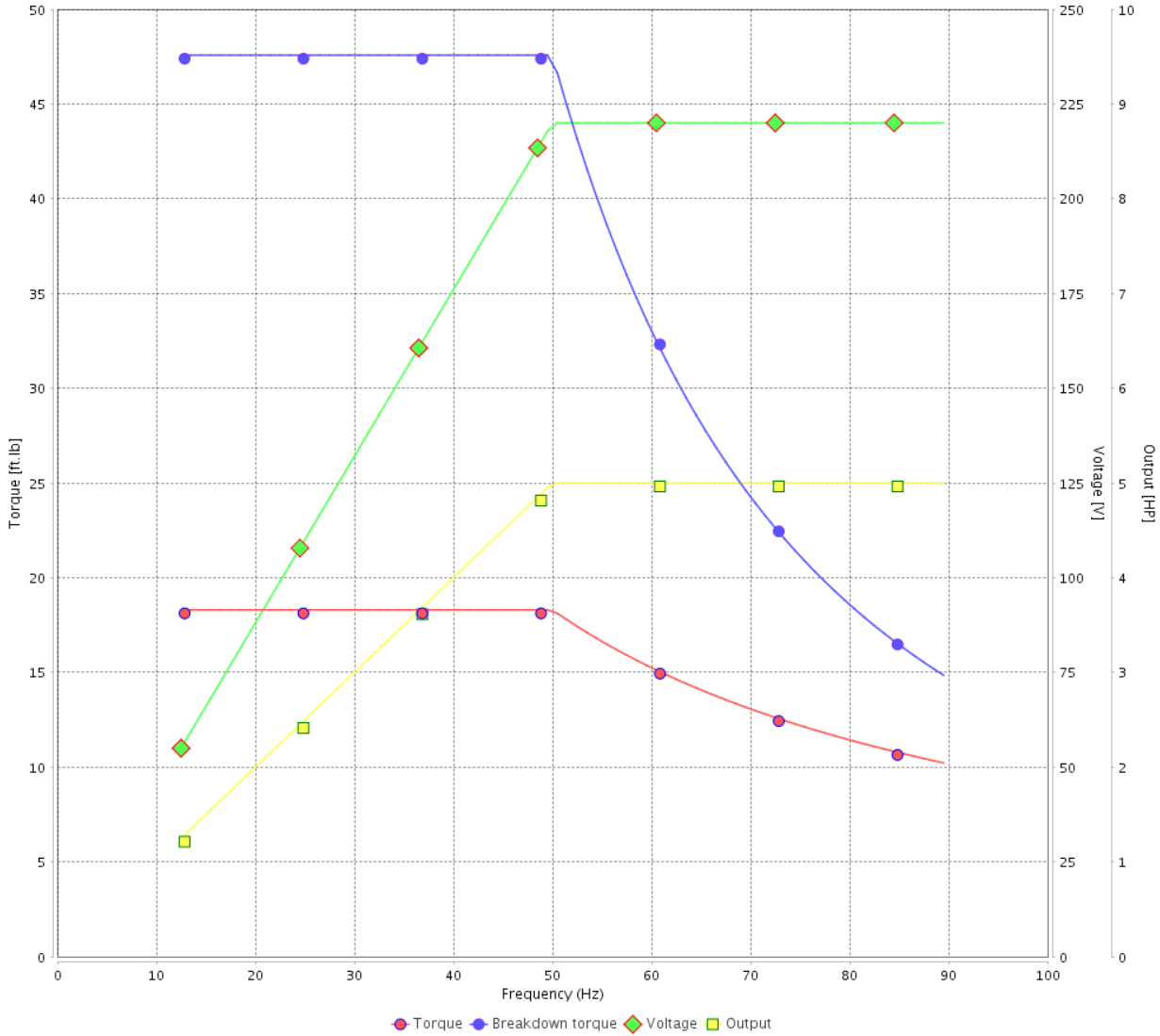
Customer :

Product line : NEMA Premium Efficiency Three-Phase

Product code : 12938619

Catalog # : 00518ET3E184T-SRT

VFD OPERATION CURVE



Performance : 220/415 V 50 Hz 4P IE1

Rated current : 14.3/7.59 A
 LRC : 6.4
 Rated torque : 18.3 ft.lb
 Locked rotor torque : 200 %
 Breakdown torque : 260 %
 Rated speed : 1435 rpm

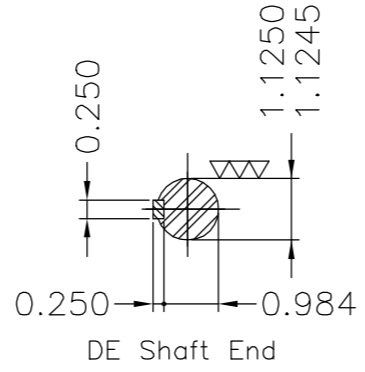
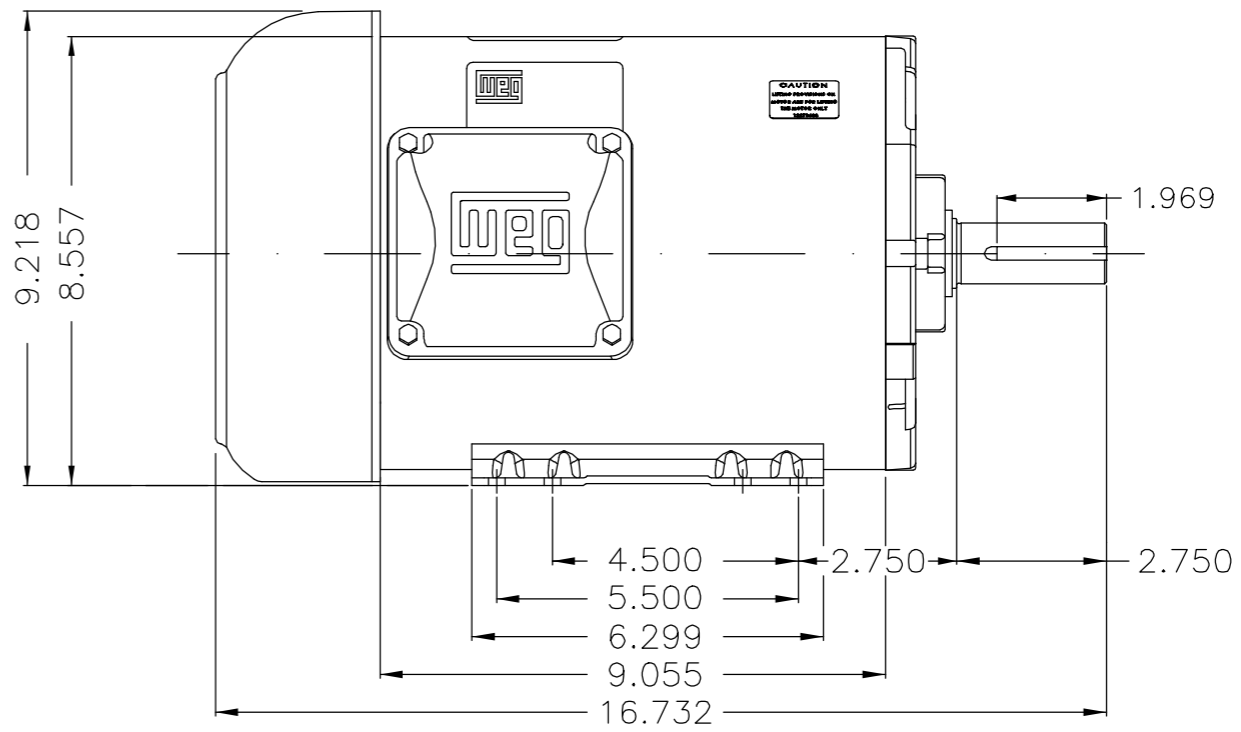
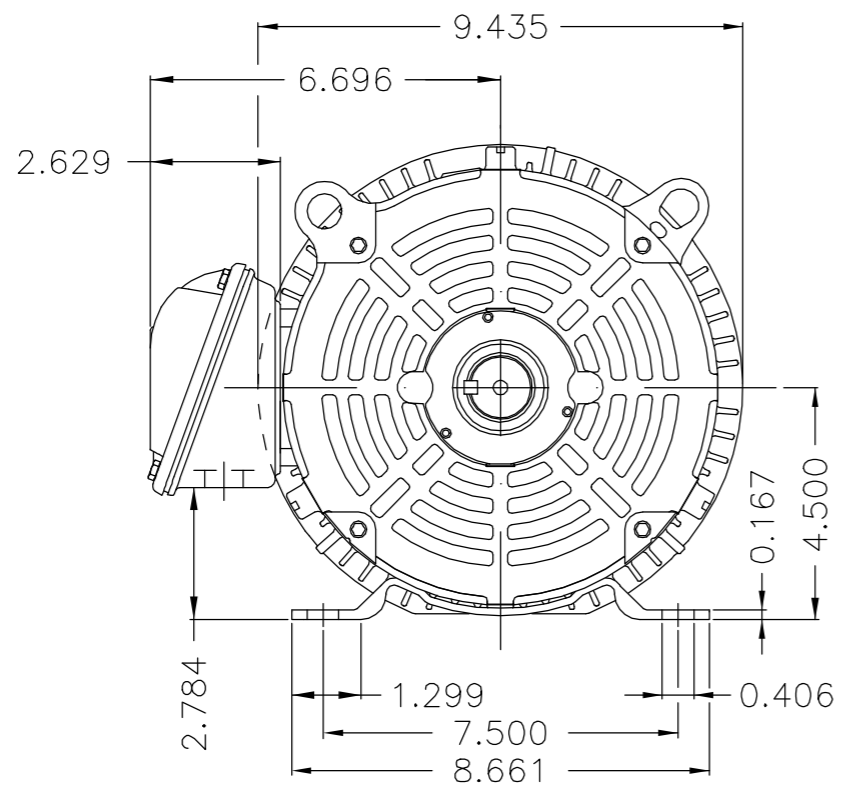
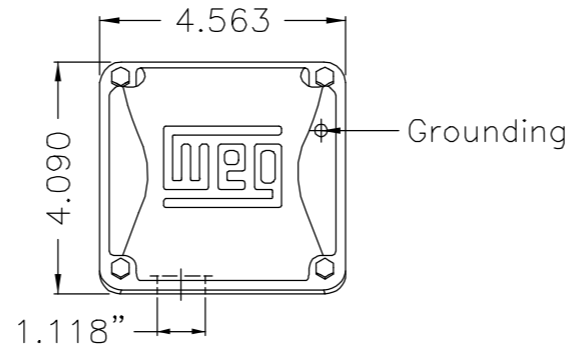
Moment of inertia (J) : 0.3080 sq.ft.lb
 Duty cycle : Cont.(S1)
 Insulation class : F
 Service factor : 1.00
 Temperature rise : 105 K
 Design : B

Rev.	Changes Summary	Performed	Checked	Date
Performed by			Page	Revision
Checked by				
Date				

EIXO/SHAFT	
PADRÃO/STANDARD	X
OPCIONAL/OPTIONAL	
ESPECIAL/SPECIAL	

Dimensões em polegadas
Dimensions in inches

THIS IS AN UPDATED REVISION, THE PREVIOUS ONE MUST BE DISREGARDED.



A
B
C
D
E

UNCONTROLLED COPY
RELEASED
ZME A3

Plano de pintura 207N / Painting plan 207N						
Forma construtiva B3D / Mounting F-1/B3R(D)						
WEG ELECTRIC CORP.						
500001146687		ATUALIZADO PLANO DE PINTURA	MENSOR	ODORIZZI	15.03.2016	01
500000938011		DOCUMENTO NOVO	PATRICKL	JTOGNERI	12.09.2014	00
ECM	LOC	SUMMARY OF MODIFICATIONS	EXECUTED	CHECKED	RELEASED	DATE VER
EXECUTED	PATRICKL	THREE P. MOTOR TEFC ROLLED STEEL NEMA P. FRAME 182/4T IP55	10003090668			
CHECKED			000	01		
RELEASED	JTOGNERI		SHEET 1 / 1			
REL DT	12.09.2014	WMO	JARAGUA DO SUL	ENGENHARIA DE PRODUTO		

5 HP 04 Poles 60Hz 413568203



NEMA
Premium



MADE IN MEXICO

MAT: 12938619 CC029A

W01.TE0IC0X0N

MODEL 00518ET3E184T-SRT

04APR2022 S/N:

**For 60Hz: Class I, Zone 2, IIC
Class I, Div.2, Gr. A,B,C,D - T3
Div 2 Inverter Duty (SF1.00)**

CT 2:1/VT 1000:1

PH 3	Hz 60	HP 5.0
FR 182/4T		KW 3.7
DUTY CONT.		V 230/460
ALT 1000 m.a.s.l.		A 13.0/6.49
INS CL F AT 80K	IP55	SFA 14.9/7.46
AMB 40°C	DES B	SF 1.15
ENCL TEFC	CODE J	PF 0.80
USABLE @ 208V 14.4A SF1.00		RPM 1750
		NEMA NOM. EFF 89.5%

ALTERNATE RATING: 5.0HP 50Hz 190-220/380-415V SF1.00
15.8-14.17.88-7.47A 1425RPM EFF 84.9% (IE1) IEC 60034-1

For safe area-inverter duty motor For 60Hz use on VPWM 1000:1 VT, 4:1 CT

DE 6206-ZZ	ODE 6205-ZZ	MOBIL POLYREX EM
-------------------	--------------------	-------------------------



INTERCHANGE ANY TWO LINE WIRES TO REVERSE THE ROTATION



WARNING: Motor must be grounded in accordance with local and national electrical codes to prevent serious electrical shocks. Disconnect power source before servicing unit.

AVERTISSEMENT: Le moteur doit être mis à la terre conformément aux codes électriques locaux et nationaux afin d'éviter tout choc électrique grave. Déconnectez l'alimentation avant l'entretien de la machine.

