



# TORQUE AND CURRENT VS SPEED CURVE

Three Phase Induction Motor - Squirrel Cage



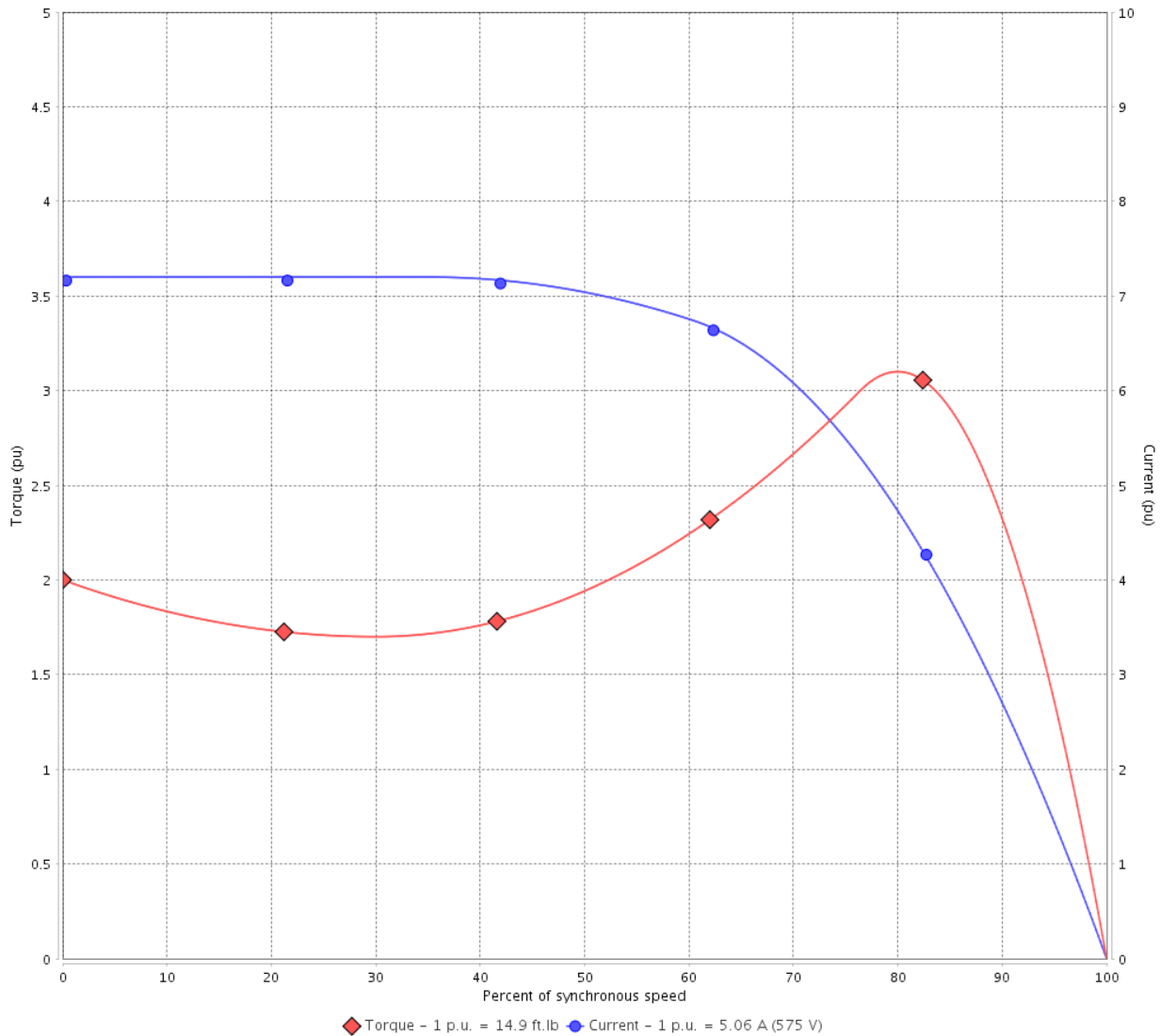
Customer :

Product line : NEMA Premium Efficiency Three-Phase

Product code : 12674734

Catalog # : 00518OT3H184TC-S

TORQUE AND CURRENT VS SPEED CURVE



Performance : 575 V 60 Hz 4P

Rated current	: 5.06 A	Moment of inertia (J)	: 0.4003 sq.ft.lb
LRC	: 7.2	Duty cycle	: Cont.(S1)
Rated torque	: 14.9 ft.lb	Insulation class	: F
Locked rotor torque	: 200 %	Service factor	: 1.15
Breakdown torque	: 310 %	Temperature rise	: 80 K
Rated speed	: 1760 rpm	Design	: B

Locked rotor time : 21s (cold) 12s (hot)

Rev.	Changes Summary	Performed	Checked	Date
Performed by			Page 2 / 6	Revision
Checked by				
Date	12/04/2022			

# LOAD PERFORMANCE CURVE

## Three Phase Induction Motor - Squirrel Cage

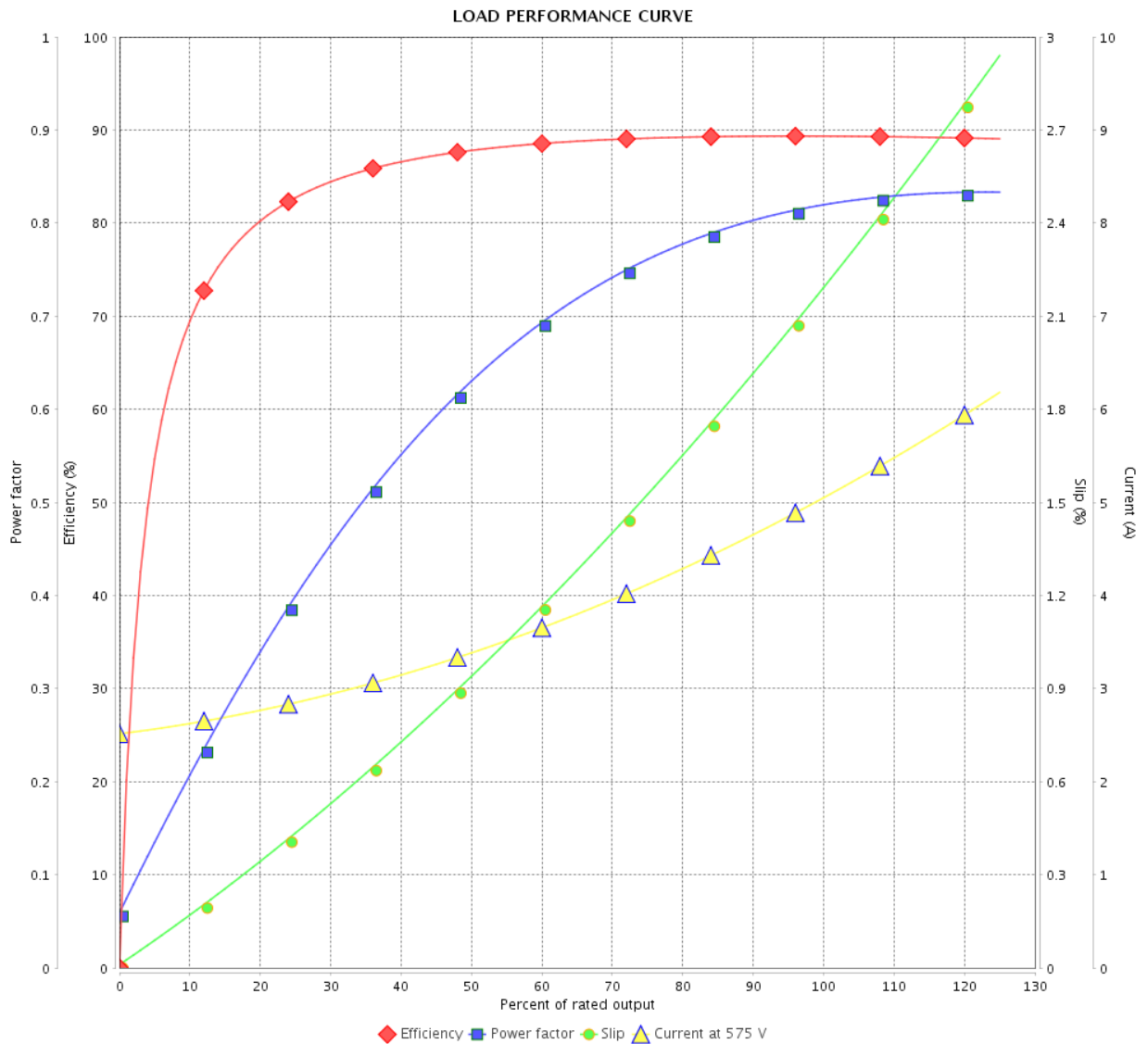


Customer :

Product line : NEMA Premium Efficiency Three-Phase

Product code : 12674734

Catalog # : 00518OT3H184TC-S



Performance : 575 V 60 Hz 4P

Rated current : 5.06 A  
 LRC : 7.2  
 Rated torque : 14.9 ft.lb  
 Locked rotor torque : 200 %  
 Breakdown torque : 310 %  
 Rated speed : 1760 rpm

Moment of inertia (J) : 0.4003 sq.ft.lb  
 Duty cycle : Cont.(S1)  
 Insulation class : F  
 Service factor : 1.15  
 Temperature rise : 80 K  
 Design : B

Rev.	Changes Summary	Performed	Checked	Date
Performed by			Page	Revision
Checked by			3 / 6	
Date	12/04/2022			

# THERMAL LIMIT CURVE



## Three Phase Induction Motor - Squirrel Cage

Customer :

Product line : NEMA Premium Efficiency Three-Phase  
Product code : 12674734  
Catalog # : 00518OT3H184TC-S

Performance : 575 V 60 Hz 4P

Rated current : 5.06 A	Moment of inertia (J) : 0.4003 sq.ft.lb
LRC : 7.2	Duty cycle : Cont.(S1)
Rated torque : 14.9 ft.lb	Insulation class : F
Locked rotor torque : 200 %	Service factor : 1.15
Breakdown torque : 310 %	Temperature rise : 80 K
Rated speed : 1760 rpm	Design : B

Heating constant

Cooling constant

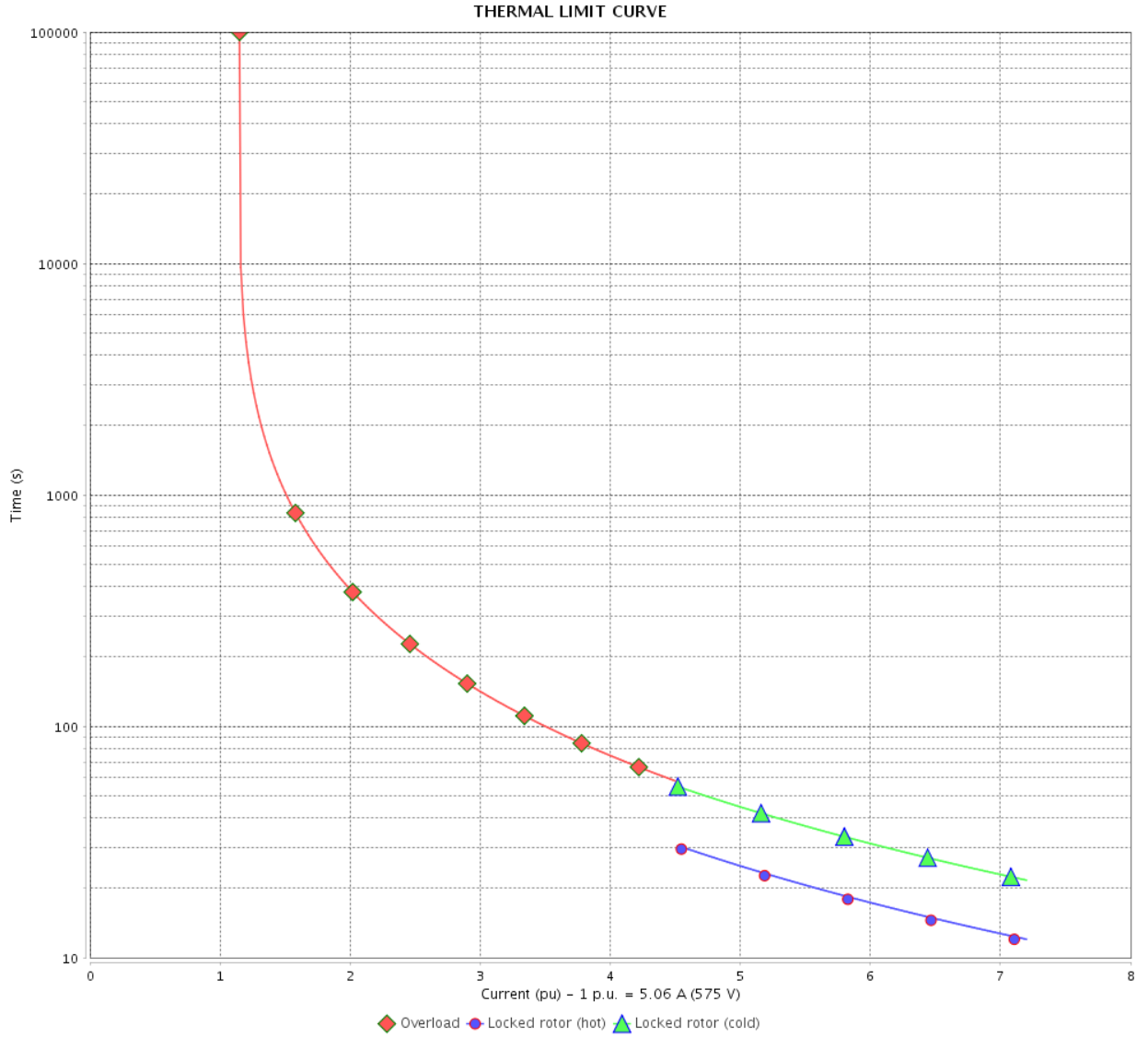
Rev.	Changes Summary	Performed	Checked	Date
Performed by				
Checked by			Page	Revision
Date	12/04/2022		4 / 6	

# THERMAL LIMIT CURVE

Three Phase Induction Motor - Squirrel Cage



Customer : \_\_\_\_\_



Rev.	Changes Summary	Performed	Checked	Date
Performed by		Page 5 / 6		Revision
Checked by				
Date				

# VFD OPERATION CURVE

Three Phase Induction Motor - Squirrel Cage

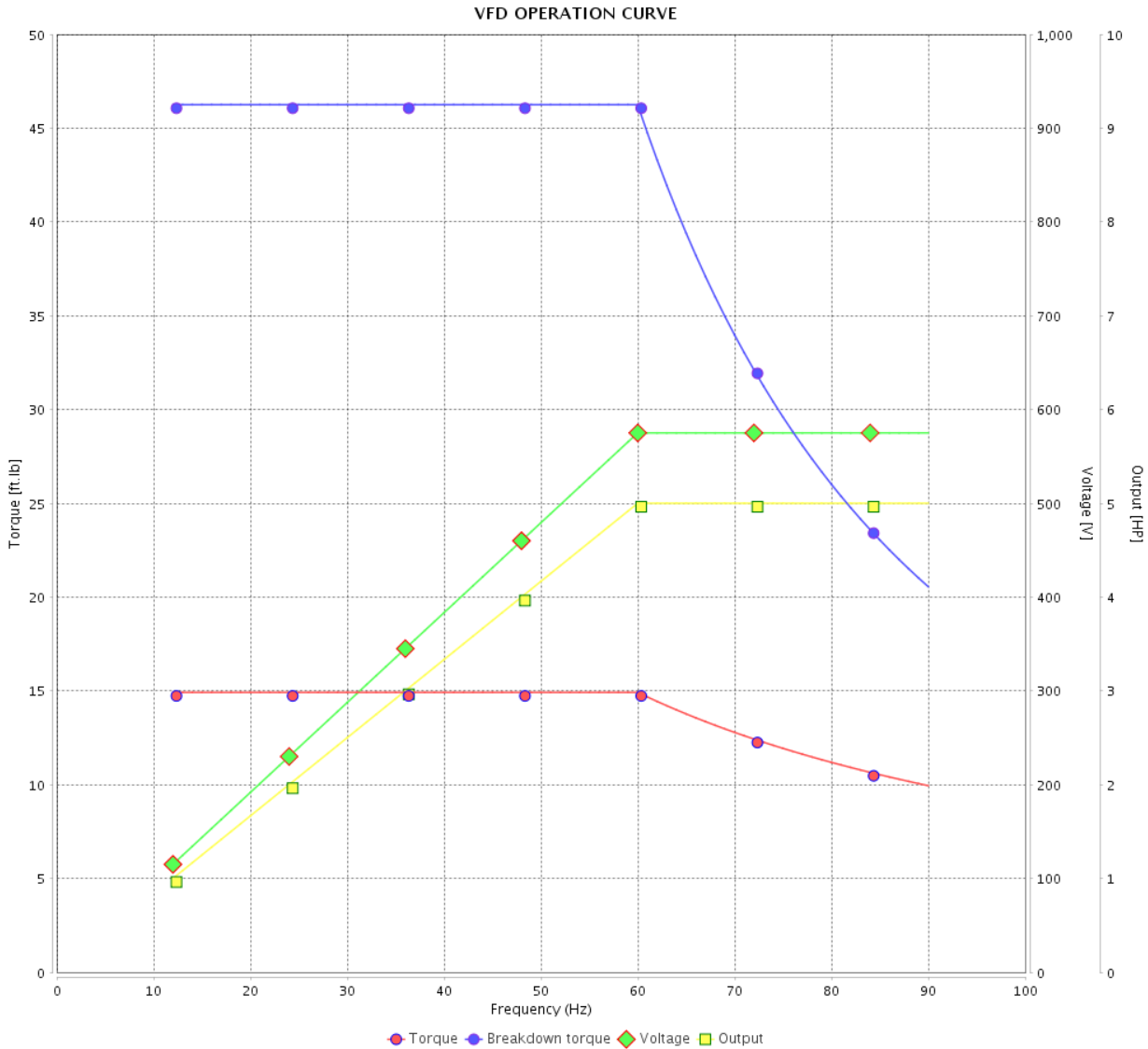


Customer : \_\_\_\_\_

Product line : NEMA Premium Efficiency Three-Phase

Product code : 12674734

Catalog # : 00518OT3H184TC-S

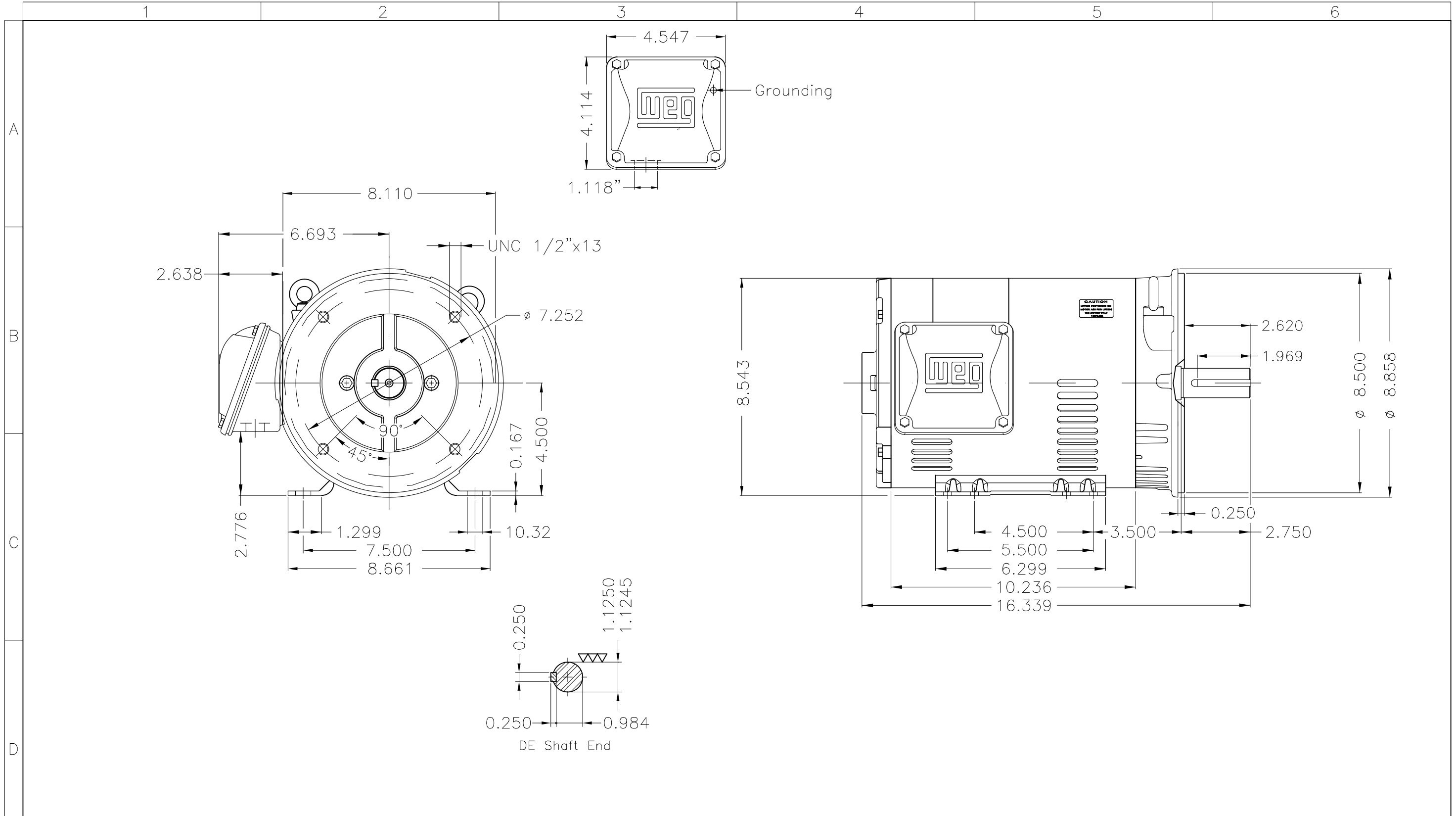



Performance : 575 V 60 Hz 4P

Rated current : 5.06 A  
 LRC : 7.2  
 Rated torque : 14.9 ft.lb  
 Locked rotor torque : 200 %  
 Breakdown torque : 310 %  
 Rated speed : 1760 rpm

Moment of inertia (J) : 0.4003 sq.ft.lb  
 Duty cycle : Cont.(S1)  
 Insulation class : F  
 Service factor : 1.15  
 Temperature rise : 80 K  
 Design : B

Rev.	Changes Summary	Performed	Checked	Date
Performed by			Page	Revision
Checked by				
Date				



Color Munsell N 1 matte black											
Painting plan 207N											
Mounting F-1/B34R(D)											
ECM	LOC	SUMMARY OF MODIFICATIONS					EXECUTED	CHECKED	RELEASED	DATE	VER
EXECUTED	PIRWBUSER	THREE PH. MOTOR ROLLED STEEL PREM. EFF.					PREVIEW	WDD	SHEET	1 / 1	
CHECKED		FRAME 182/4TC IP21 ODP									
RELEASED											
REL DT.		WMO	Jaragua do Sul	Product Engineering							

5 HP 04 Poles 60 Hz

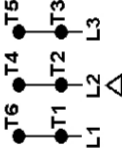
A

**NEMA**  
**Premium**

MADE IN MEXICO

**MAT: 12674734 CC029A****W01.T00IC0X0N****CP005504NPW01****18MAR2022 S/N:**

<b>PH 3</b>	<b>Hz 60</b>	<b>HP 5.0</b>
<b>FR 182/4TC</b>		<b>KW 3.7</b>
<b>DUTY CONT.</b>		<b>V 575</b>
<b>ALT 1000 m.a.s.l.</b>		<b>A 5.06</b>
<b>INS CL F AT 80K</b>		<b>SFA 5.82</b>
<b>AMB 40°C</b>	<b>DES B</b>	<b>SF 1.15</b>
<b>ENCL ODP</b>	<b>CODE J</b>	<b>PF 0.82</b>
		<b>RPM 1760</b>
		<b>NEMA</b>
		<b>NOM. EFF 89.5%</b>

**Inverter duty motor For use on VPWM 1000:1 VT, 5:1 CT****DE 6206-ZZ ODE 6205-ZZ MOBIL POLYREX EM**

T1-BLU  
T2-WHT  
T3-ORG  
T4-YEL  
T5-BLK  
T6-GRY

**INTERCHANGE ANY TWO LINE WIRES TO REVERSE THE ROTATION**

**WARNING:** Motor must be grounded in accordance with local and national electrical codes to prevent serious electrical shocks. Disconnect power source before servicing unit.



**AVERTISSEMENT:** Le moteur doit être mis à la terre

conformément aux codes électriques locaux et nationaux afin d'éviter tout choc électrique grave. Déconnectez l'alimentation avant l'entretien de la machine.

