

# DATA SHEET



## Three Phase Induction Motor - Squirrel Cage

Customer :																			
Product line	: NEMA Premium Efficiency Three-Phase																		
Product code :	13185154																		
Catalog # :	00536ET3E184T-SRT																		
Frame : 182/4T Output : 5 HP (3.7 kW) Poles : 2 Frequency : 60 Hz Rated voltage : 208-230/460 V Rated current : 13.0-11.8/5.90 A L. R. Amperes : 107-96.8/48.4 A LRC : 8.2x(Code J) No load current : 0.000-4.60/2.30 A Rated speed : 3490 rpm Slip : 3.06 % Rated torque : 7.50 ft.lb Locked rotor torque : 220 % Breakdown torque : 350 % Insulation class : F Service factor : 1.15 Moment of inertia (J) : 0.2079 sq.ft.lb Design : B	Locked rotor time : 39s (cold) 22s (hot) Temperature rise : 80 K Duty cycle : Cont.(S1) Ambient temperature : -20°C to +40°C Altitude : 1000 m.a.s.l. Protection degree : IP55 Cooling method : IC411 - TEFC Mounting : F-1 Rotation <sup>1</sup> : Both (CW and CCW) Starting method : Direct On Line Approx. weight <sup>3</sup> : 58.9 lb																		
Output	25%    50%    75%    100%																		
Efficiency (%)	0.000    87.5    88.5    88.5																		
Power Factor	0.00    0.76    0.85    0.89																		
Foundation loads																			
Max. traction	: 139 lb																		
Max. compression	: 197 lb																		
	<table border="0" style="width:100%;"> <tr> <td></td> <td style="text-align: center;"><u>Drive end</u></td> <td style="text-align: center;"><u>Non drive end</u></td> </tr> <tr> <td>Bearing type :</td> <td style="text-align: center;">6206 ZZ</td> <td style="text-align: center;">6205 ZZ</td> </tr> <tr> <td>Sealing :</td> <td style="text-align: center;">V'Ring</td> <td style="text-align: center;">Without Bearing Seal</td> </tr> <tr> <td>Lubrication interval :</td> <td style="text-align: center;">0 h</td> <td style="text-align: center;">0 h</td> </tr> <tr> <td>Lubricant amount :</td> <td style="text-align: center;">0 g</td> <td style="text-align: center;">0 g</td> </tr> <tr> <td>Lubricant type :</td> <td colspan="2" style="text-align: center;">Mobil Polyrex EM</td> </tr> </table>		<u>Drive end</u>	<u>Non drive end</u>	Bearing type :	6206 ZZ	6205 ZZ	Sealing :	V'Ring	Without Bearing Seal	Lubrication interval :	0 h	0 h	Lubricant amount :	0 g	0 g	Lubricant type :	Mobil Polyrex EM	
	<u>Drive end</u>	<u>Non drive end</u>																	
Bearing type :	6206 ZZ	6205 ZZ																	
Sealing :	V'Ring	Without Bearing Seal																	
Lubrication interval :	0 h	0 h																	
Lubricant amount :	0 g	0 g																	
Lubricant type :	Mobil Polyrex EM																		
Notes																			
This revision replaces and cancel the previous one, which must be eliminated. (1) Looking the motor from the shaft end. (2) Measured at 1m and with tolerance of +3dB(A). (3) Approximate weight subject to changes after manufacturing process. (4) At 100% of full load.																			
These are average values based on tests with sinusoidal power supply, subject to the tolerances stipulated in NEMA MG-1.																			
Rev.	Changes Summary	Performed	Checked	Date															
Performed by																			
Checked by			Page	Revision															
Date	13/04/2022		1 / 6																

# TORQUE AND CURRENT VS SPEED CURVE

Three Phase Induction Motor - Squirrel Cage



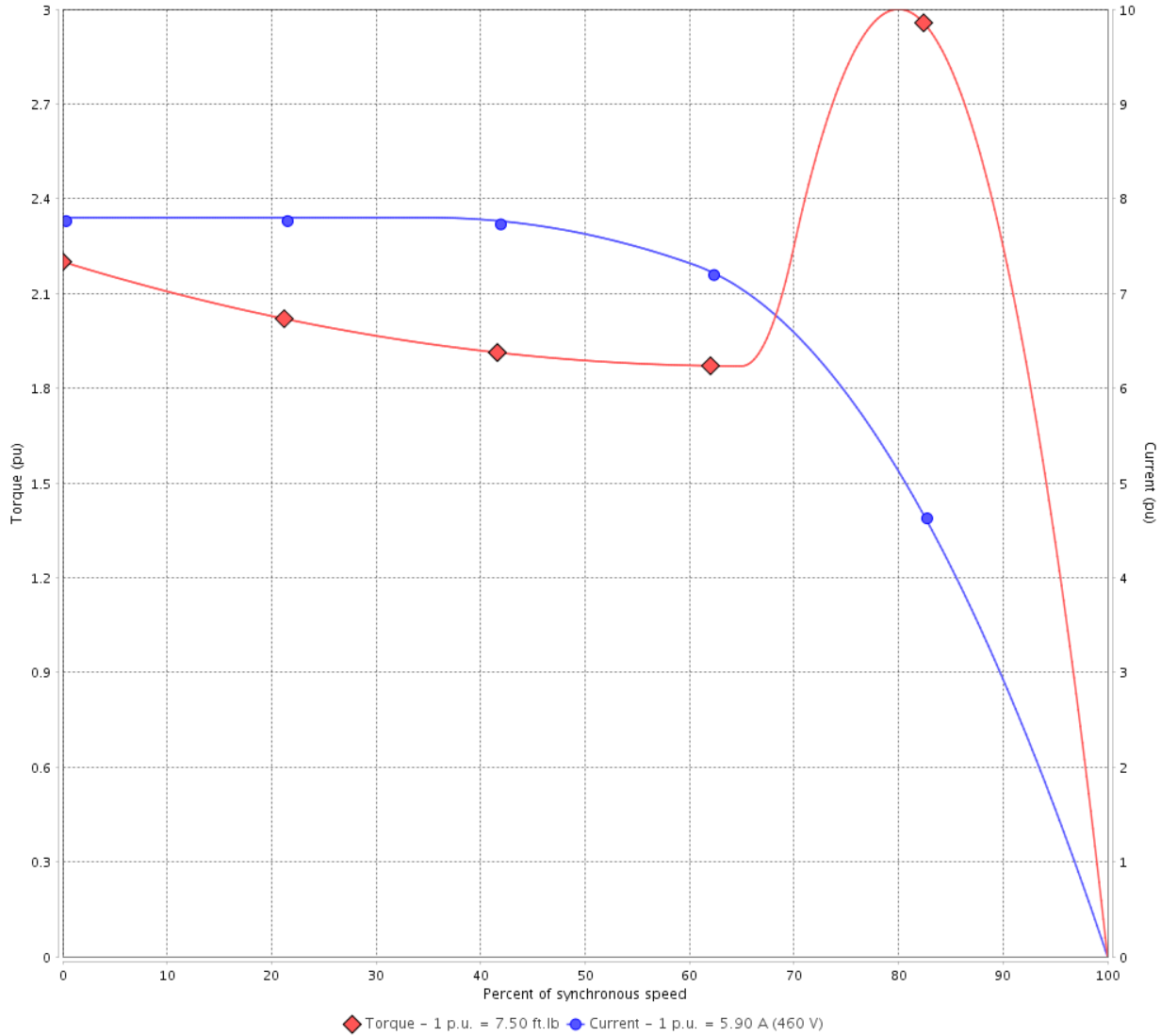
Customer :

Product line : NEMA Premium Efficiency Three-Phase

Product code : 13185154

Catalog # : 00536ET3E184T-SRT

TORQUE AND CURRENT VS SPEED CURVE



Performance : 208-230/460 V 60 Hz 2P

Rated current	: 13.0-11.8/5.90 A	Moment of inertia (J)	: 0.2079 sq.ft.lb
LRC	: 8.2	Duty cycle	: Cont.(S1)
Rated torque	: 7.50 ft.lb	Insulation class	: F
Locked rotor torque	: 220 %	Service factor	: 1.15
Breakdown torque	: 350 %	Temperature rise	: 80 K
Rated speed	: 3490 rpm	Design	: B

Locked rotor time : 39s (cold) 22s (hot)

Rev.	Changes Summary	Performed	Checked	Date
Performed by			Page 2 / 6	Revision
Checked by				
Date	13/04/2022			

# LOAD PERFORMANCE CURVE

## Three Phase Induction Motor - Squirrel Cage

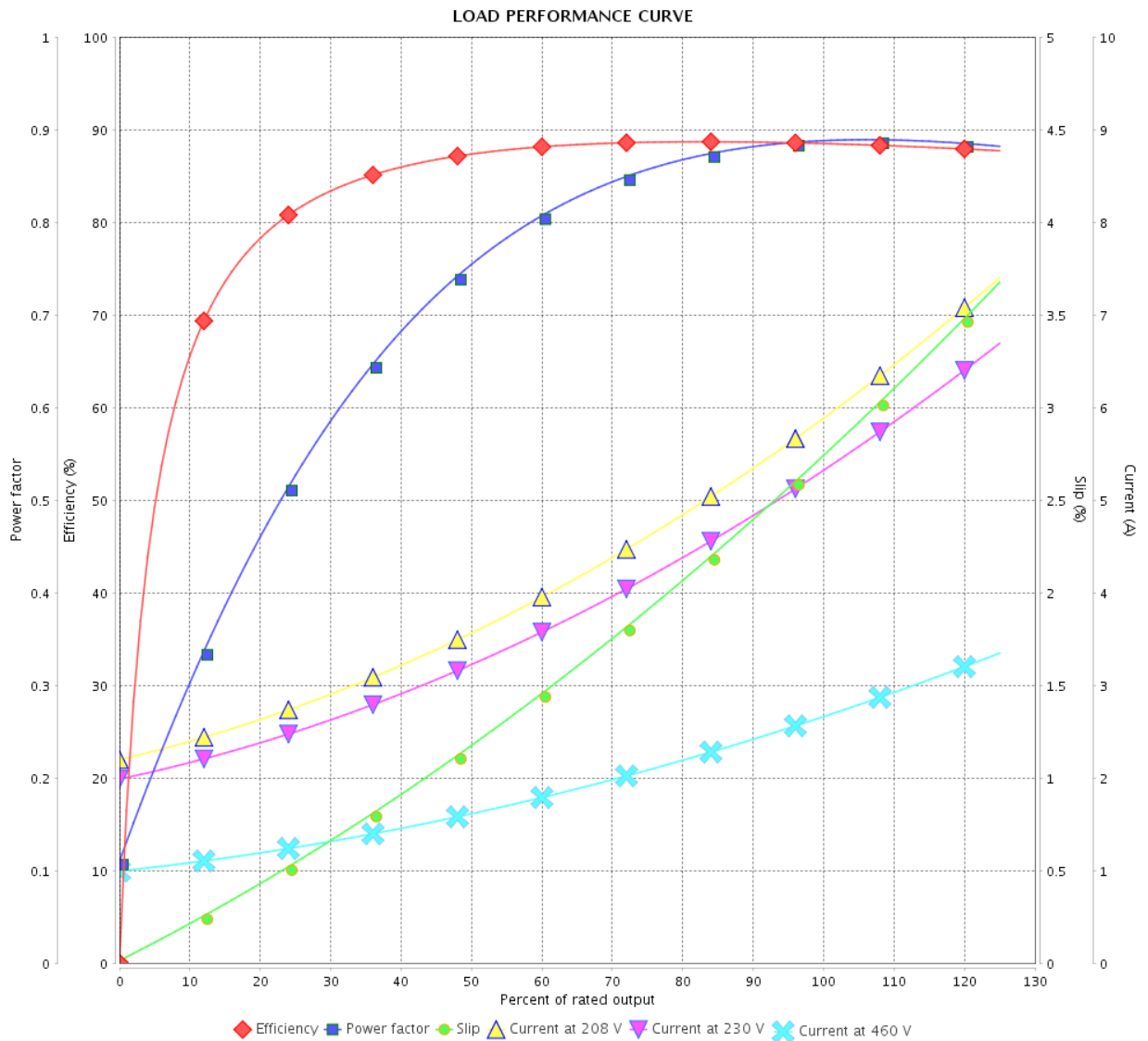


Customer :

Product line : NEMA Premium Efficiency Three-Phase

Product code : 13185154

Catalog # : 00536ET3E184T-SRT



Performance : 208-230/460 V 60 Hz 2P

Rated current : 13.0-11.8/5.90 A  
 LRC : 8.2  
 Rated torque : 7.50 ft.lb  
 Locked rotor torque : 220 %  
 Breakdown torque : 350 %  
 Rated speed : 3490 rpm

Moment of inertia (J) : 0.2079 sq.ft.lb  
 Duty cycle : Cont.(S1)  
 Insulation class : F  
 Service factor : 1.15  
 Temperature rise : 80 K  
 Design : B

Rev.	Changes Summary	Performed	Checked	Date
Performed by		Page		Revision
Checked by		3 / 6		
Date		13/04/2022		

# THERMAL LIMIT CURVE

## Three Phase Induction Motor - Squirrel Cage



Customer :

Product line : NEMA Premium Efficiency Three-Phase  
Product code : 13185154  
Catalog # : 00536ET3E184T-SRT

Performance : 208-230/460 V 60 Hz 2P

Rated current	: 13.0-11.8/5.90 A	Moment of inertia (J)	: 0.2079 sq.ft.lb
LRC	: 8.2	Duty cycle	: Cont.(S1)
Rated torque	: 7.50 ft.lb	Insulation class	: F
Locked rotor torque	: 220 %	Service factor	: 1.15
Breakdown torque	: 350 %	Temperature rise	: 80 K
Rated speed	: 3490 rpm	Design	: B

Heating constant

Cooling constant

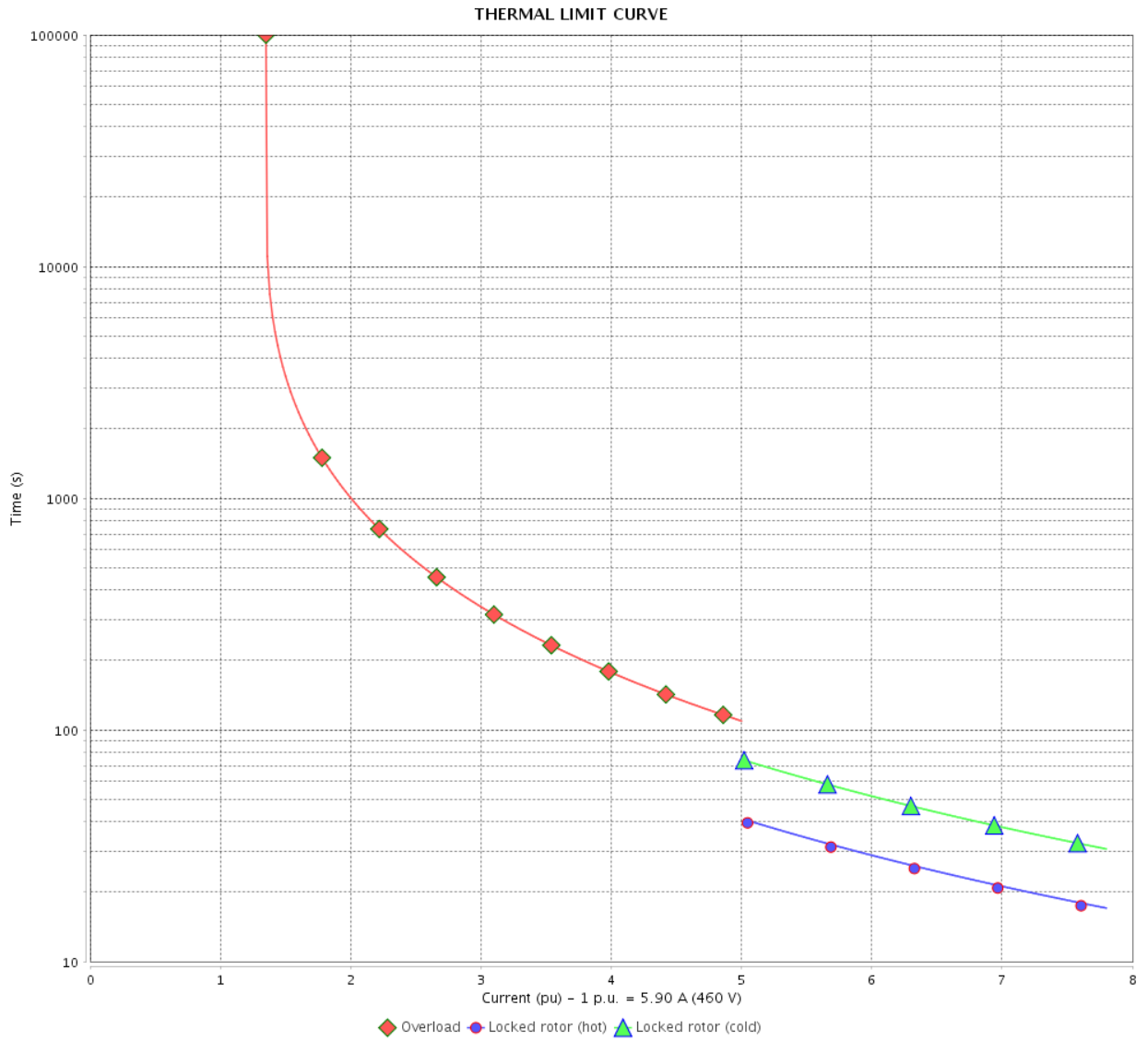
Rev.	Changes Summary	Performed	Checked	Date
Performed by				
Checked by			Page	Revision
Date	13/04/2022		4 / 6	

# THERMAL LIMIT CURVE

Three Phase Induction Motor - Squirrel Cage



Customer : \_\_\_\_\_



Rev.	Changes Summary	Performed	Checked	Date
Performed by		Page		Revision
Checked by				
Date				

# VFD OPERATION CURVE

Three Phase Induction Motor - Squirrel Cage

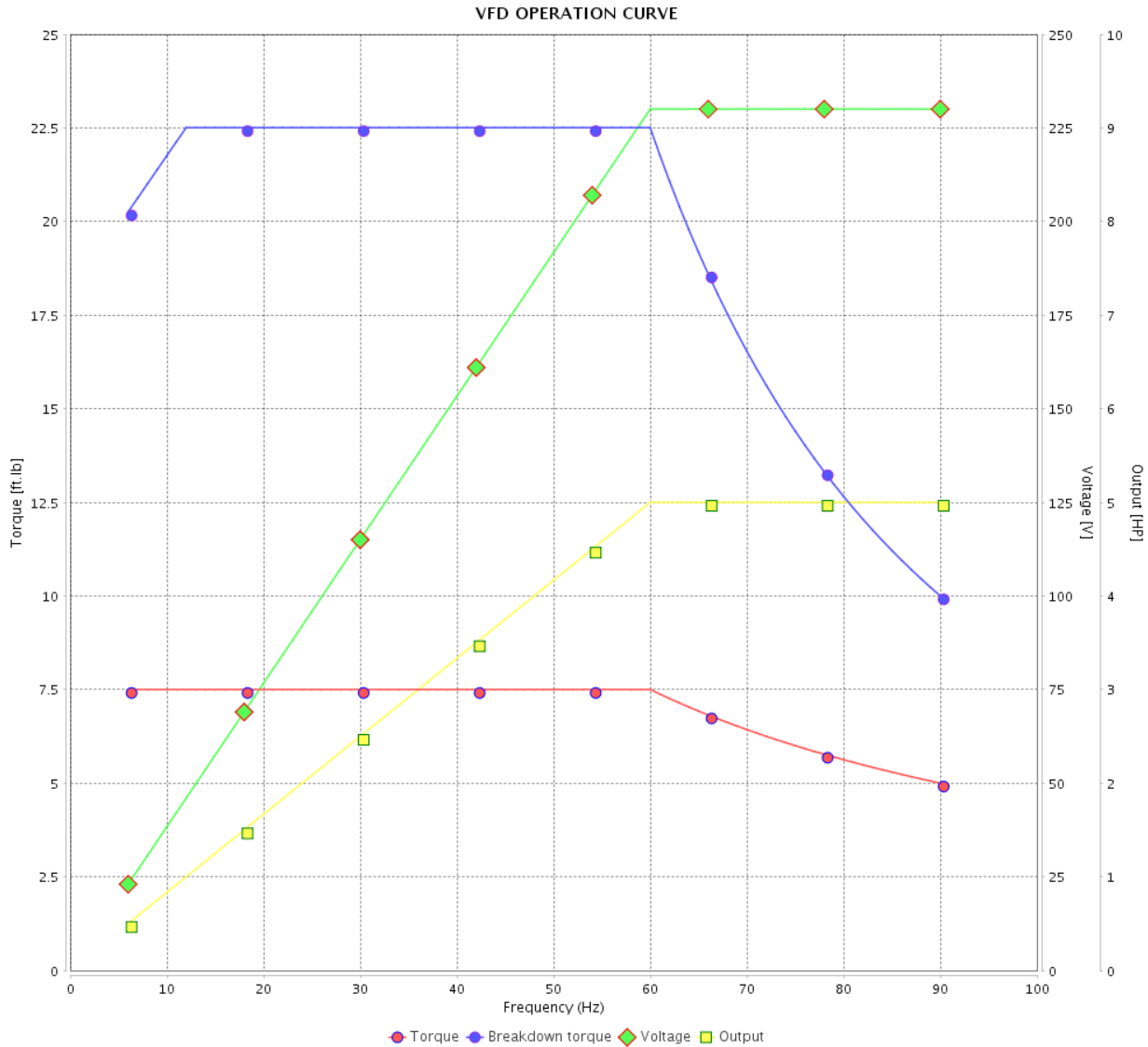


Customer :

Product line : NEMA Premium Efficiency Three-Phase

Product code : 13185154

Catalog # : 00536ET3E184T-SRT



Performance : 208-230/460 V 60 Hz 2P

Rated current : 13.0-11.8/5.90 A  
 LRC : 8.2  
 Rated torque : 7.50 ft.lb  
 Locked rotor torque : 220 %  
 Breakdown torque : 350 %  
 Rated speed : 3490 rpm

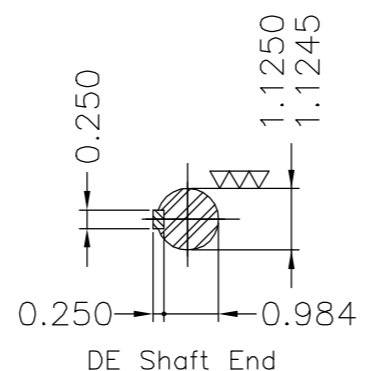
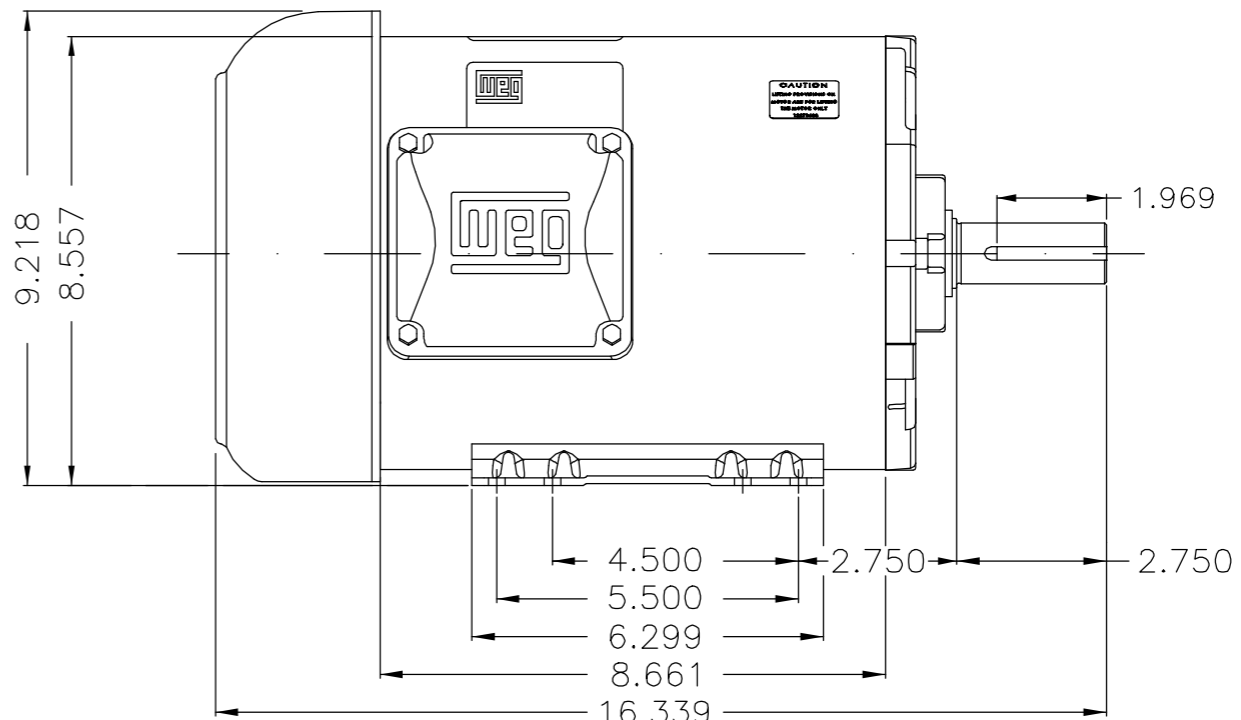
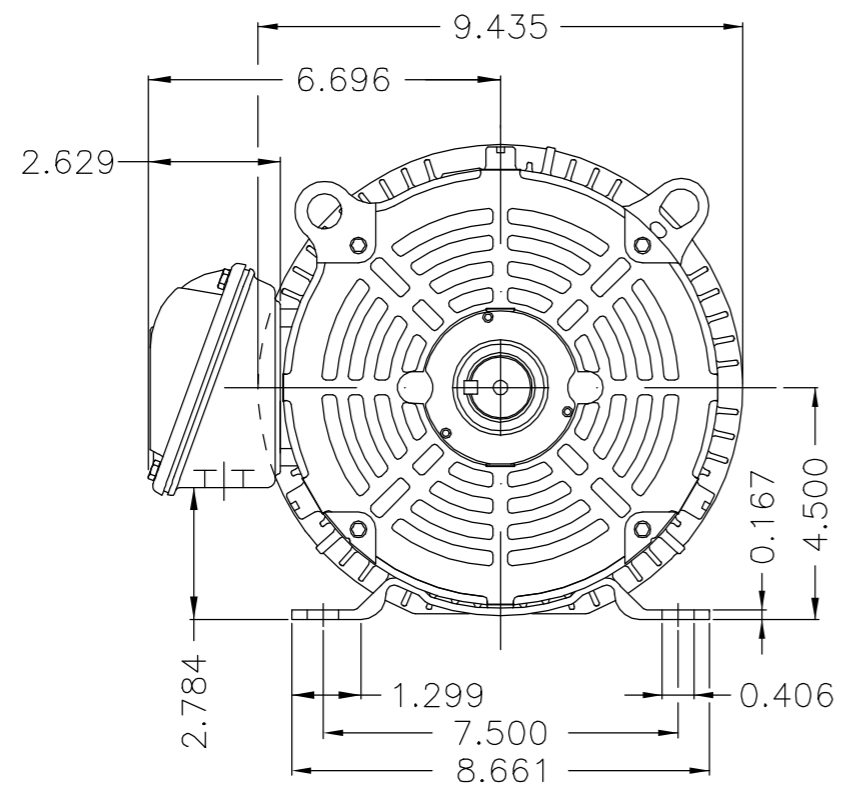
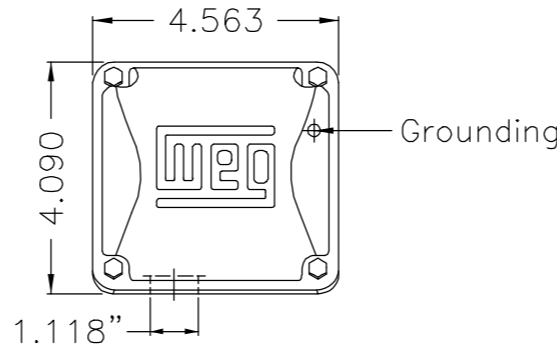
Moment of inertia (J) : 0.2079 sq.ft.lb  
 Duty cycle : Cont.(S1)  
 Insulation class : F  
 Service factor : 1.15  
 Temperature rise : 80 K  
 Design : B

Rev.	Changes Summary	Performed	Checked	Date
Performed by			Page 6 / 6	Revision
Checked by				
Date	13/04/2022			

EIXO/SHAFT	
PADRÃO/STANDARD	X
OPCIONAL/OPTIONAL	
ESPECIAL/SPECIAL	

Dimensões em polegadas  
Dimensions in inches

THIS IS AN UPDATED REVISION, THE PREVIOUS ONE MUST BE DISREGARDED.



A  
B  
C  
D  
E

UNCONTROLLED COPY

Plano de pintura 207N / Painting plan 207N						
Forma construtiva B3D / Mounting F-1/B3R(D)						
<b>WEG ELECTRIC CORP.</b>						
500001146687		ATUALIZADO PLANO DE PINTURA	MENSOR		ODORIZZI	15.03.2016 01
500001014759		DOCUMENTO NOVO	PATRICKL		EMERSONRH	19.03.2015 00
ECM	LOC	SUMMARY OF MODIFICATIONS	EXECUTED	CHECKED	RELEASED	DATE VER
EXECUTED	PATRICKL	THREE P. MOTOR TEFC ROLLED STEEL NEMA P. FRAME 182/4T IP55	10003458101		000   01	
CHECKED						
RELEASED	EMERSONRH					
REL DT	19.03.2015					
WMO	JARAGUA DO SUL	ENGENHARIA DE PRODUTO	SHEET		1 / 1	

5 HP 02 Poles 60Hz 413788098

A



RELEASED

ZME A3