



# TORQUE AND CURRENT VS SPEED CURVE

Three Phase Induction Motor - Squirrel Cage



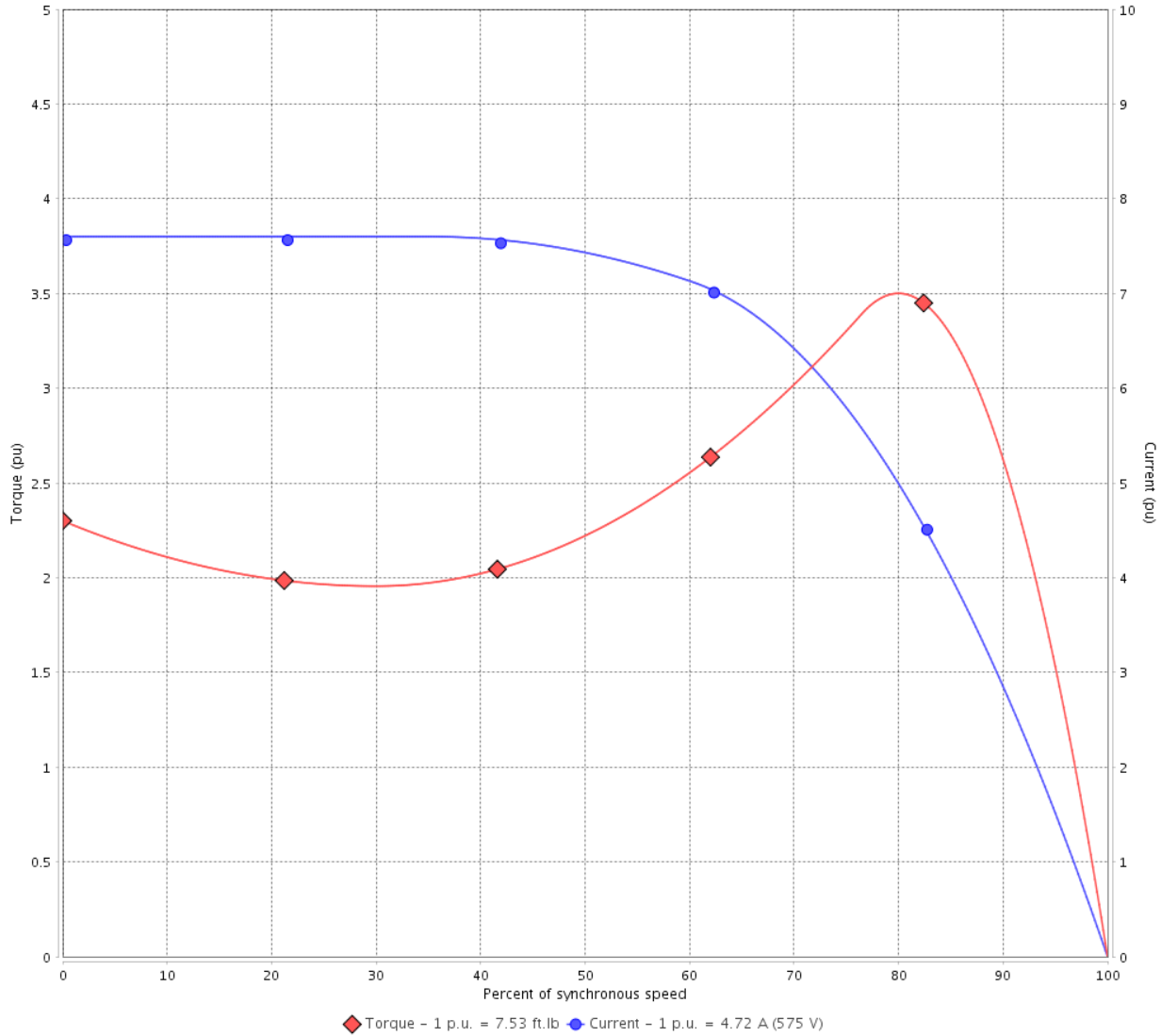
Customer :

Product line : NEMA Premium Efficiency Three-Phase

Product code : 11611340

Catalog # : 00536ET3H184T-W22

TORQUE AND CURRENT VS SPEED CURVE



Performance : 575 V 60 Hz 2P

|                     |              |                       |                   |
|---------------------|--------------|-----------------------|-------------------|
| Rated current       | : 4.72 A     | Moment of inertia (J) | : 0.2233 sq.ft.lb |
| LRC                 | : 7.6        | Duty cycle            | : Cont.(S1)       |
| Rated torque        | : 7.53 ft.lb | Insulation class      | : F               |
| Locked rotor torque | : 229 %      | Service factor        | : 1.25            |
| Breakdown torque    | : 350 %      | Temperature rise      | : 80 K            |
| Rated speed         | : 3485 rpm   | Design                | : B               |

Locked rotor time : 45s (cold) 25s (hot)

| Rev.         | Changes Summary | Performed | Checked       | Date     |
|--------------|-----------------|-----------|---------------|----------|
|              |                 |           |               |          |
| Performed by |                 |           | Page<br>2 / 6 | Revision |
| Checked by   |                 |           |               |          |
| Date         | 13/04/2022      |           |               |          |

# LOAD PERFORMANCE CURVE

## Three Phase Induction Motor - Squirrel Cage

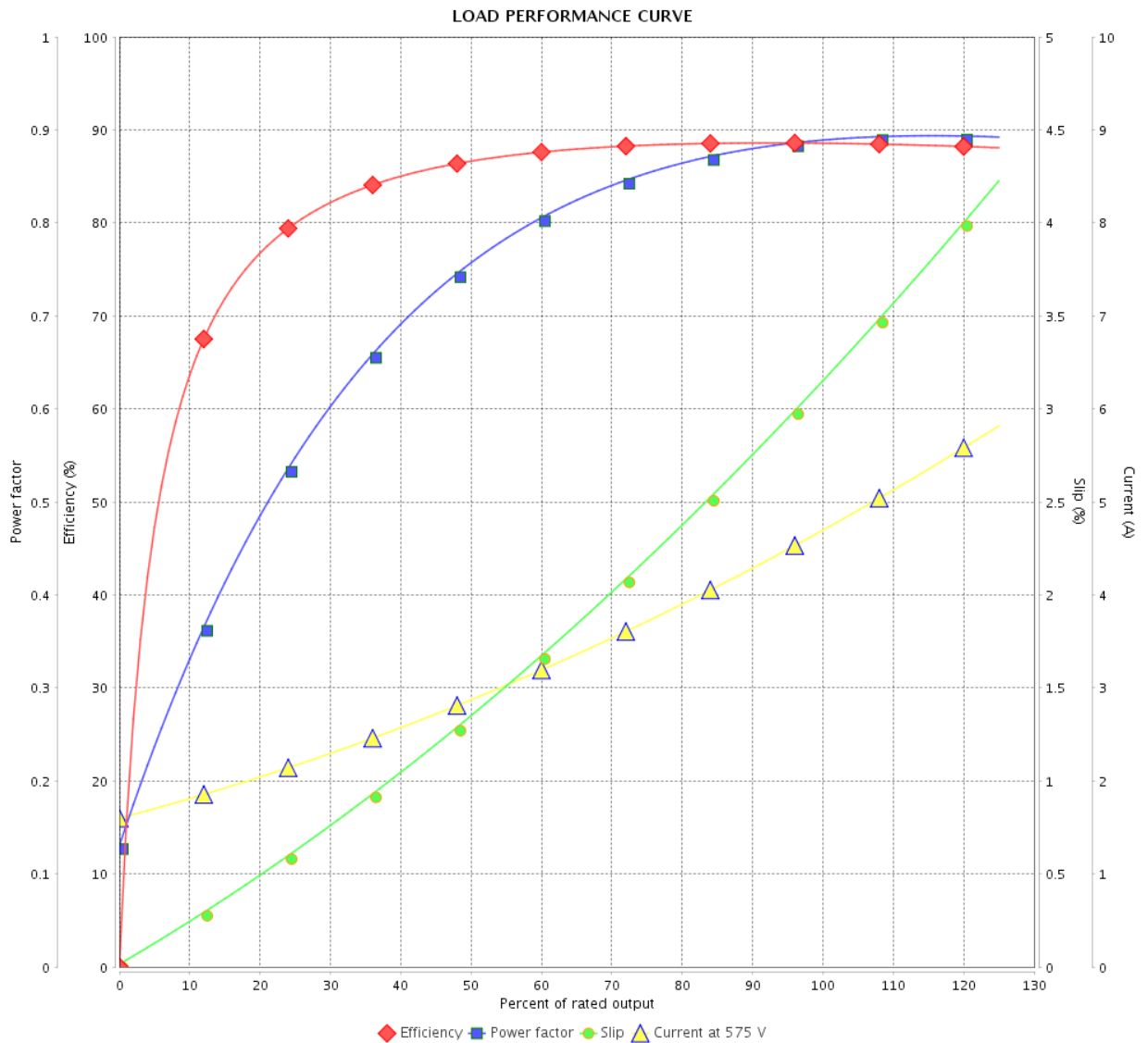


Customer : \_\_\_\_\_

Product line : NEMA Premium Efficiency Three-Phase

Product code : 11611340

Catalog # : 00536ET3H184T-W22



Performance : 575 V 60 Hz 2P

Rated current : 4.72 A  
 LRC : 7.6  
 Rated torque : 7.53 ft.lb  
 Locked rotor torque : 229 %  
 Breakdown torque : 350 %  
 Rated speed : 3485 rpm

Moment of inertia (J) : 0.2233 sq.ft.lb  
 Duty cycle : Cont.(S1)  
 Insulation class : F  
 Service factor : 1.25  
 Temperature rise : 80 K  
 Design : B

| Rev.         | Changes Summary | Performed  | Checked | Date     |
|--------------|-----------------|------------|---------|----------|
|              |                 |            |         |          |
| Performed by |                 | Page       |         | Revision |
| Checked by   |                 | 3 / 6      |         |          |
| Date         |                 | 13/04/2022 |         |          |

# THERMAL LIMIT CURVE

## Three Phase Induction Motor - Squirrel Cage



Customer :

Product line : NEMA Premium Efficiency Three-Phase  
Product code : 11611340  
Catalog # : 00536ET3H184T-W22

Performance : 575 V 60 Hz 2P

|                     |              |                       |                   |
|---------------------|--------------|-----------------------|-------------------|
| Rated current       | : 4.72 A     | Moment of inertia (J) | : 0.2233 sq.ft.lb |
| LRC                 | : 7.6        | Duty cycle            | : Cont.(S1)       |
| Rated torque        | : 7.53 ft.lb | Insulation class      | : F               |
| Locked rotor torque | : 229 %      | Service factor        | : 1.25            |
| Breakdown torque    | : 350 %      | Temperature rise      | : 80 K            |
| Rated speed         | : 3485 rpm   | Design                | : B               |

Heating constant

Cooling constant

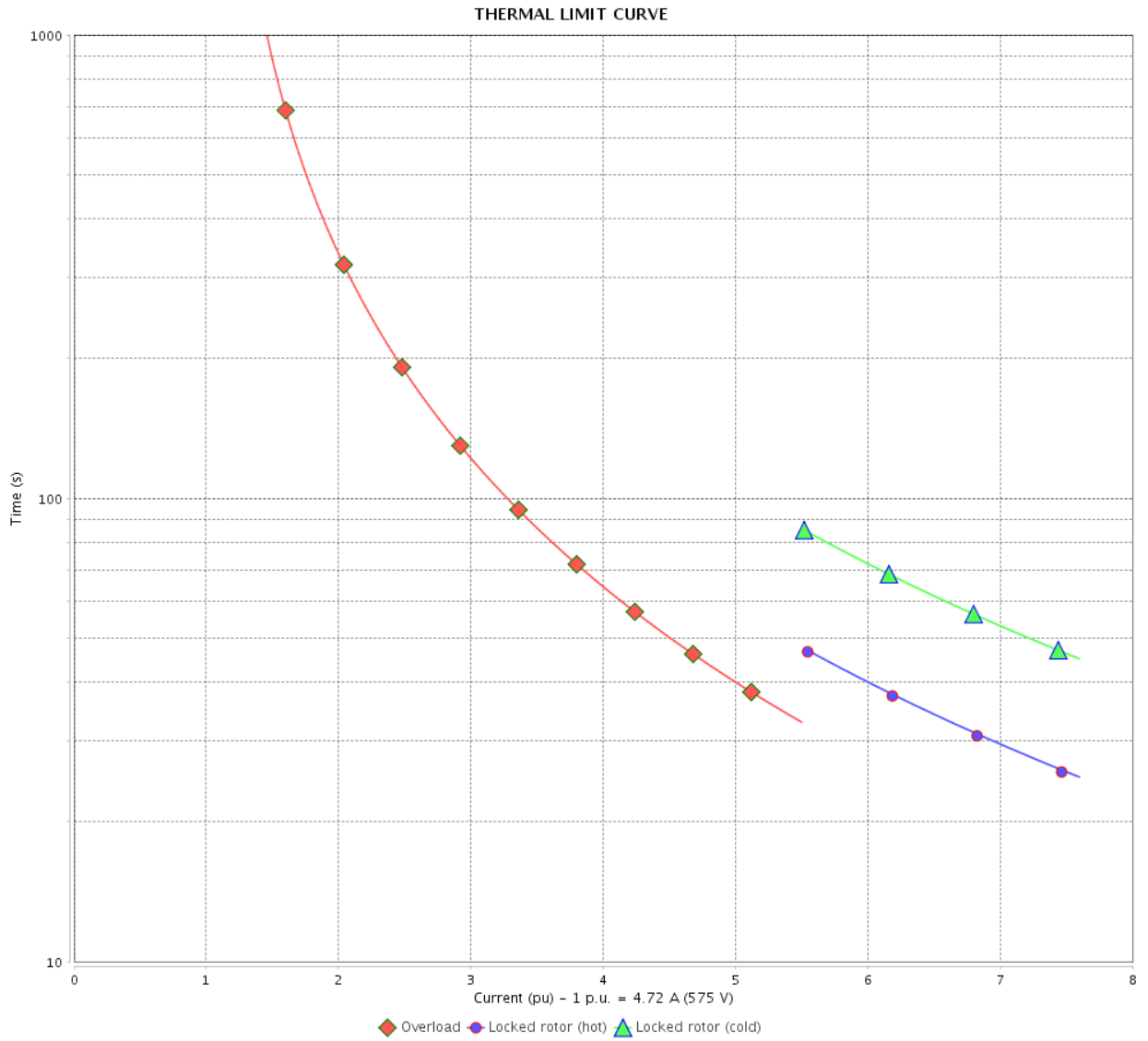
| Rev.         | Changes Summary | Performed | Checked | Date     |
|--------------|-----------------|-----------|---------|----------|
|              |                 |           |         |          |
| Performed by |                 |           |         |          |
| Checked by   |                 |           | Page    | Revision |
| Date         | 13/04/2022      |           | 4 / 6   |          |

# THERMAL LIMIT CURVE

Three Phase Induction Motor - Squirrel Cage



Customer : \_\_\_\_\_



| Rev.         | Changes Summary | Performed     | Checked | Date     |
|--------------|-----------------|---------------|---------|----------|
|              |                 |               |         |          |
| Performed by |                 | Page<br>5 / 6 |         | Revision |
| Checked by   |                 |               |         |          |
| Date         |                 |               |         |          |

# VFD OPERATION CURVE

Three Phase Induction Motor - Squirrel Cage



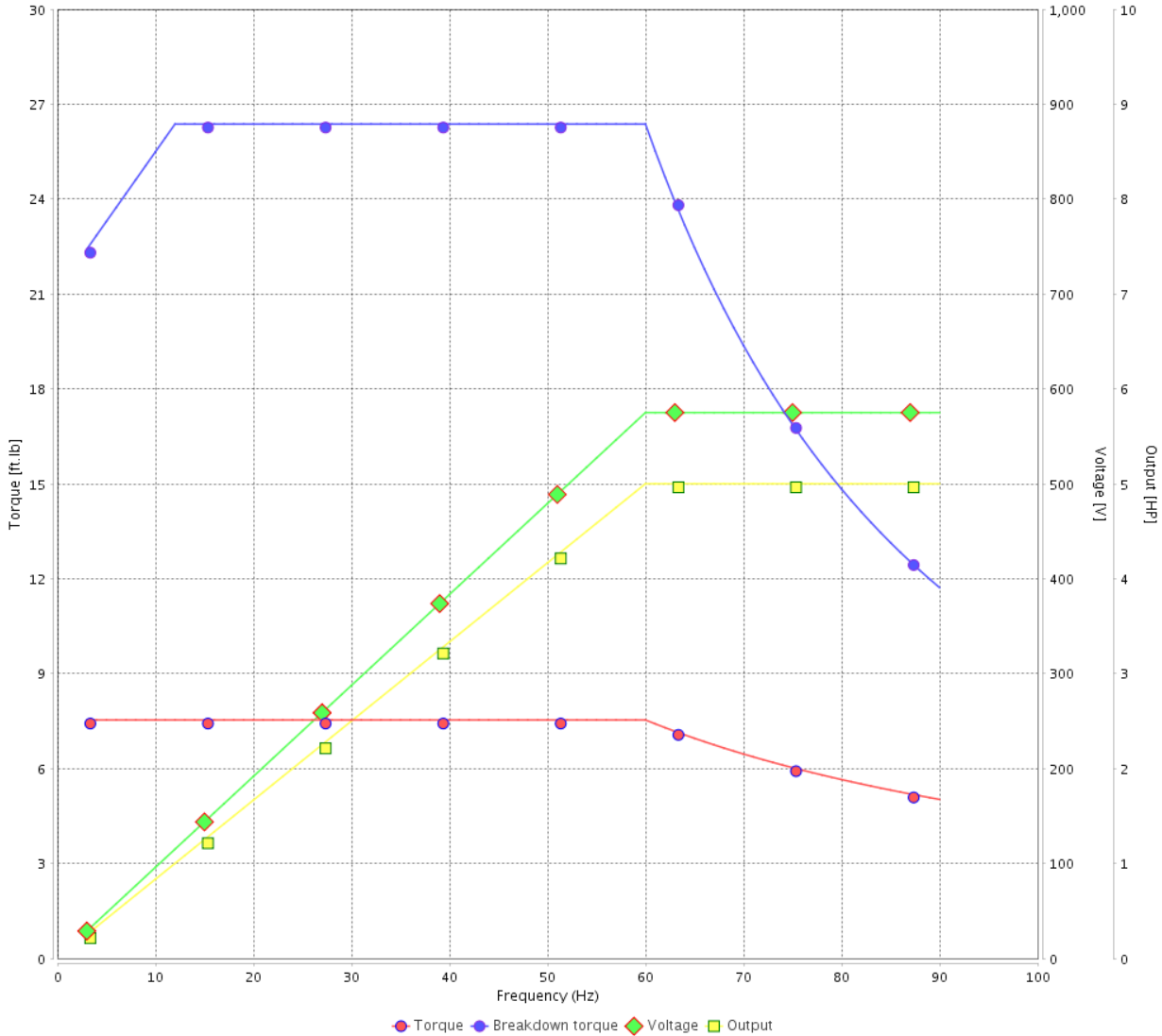
Customer :

Product line : NEMA Premium Efficiency Three-Phase

Product code : 11611340

Catalog # : 00536ET3H184T-W22

VFD OPERATION CURVE



Performance : 575 V 60 Hz 2P

Rated current : 4.72 A  
 LRC : 7.6  
 Rated torque : 7.53 ft.lb  
 Locked rotor torque : 229 %  
 Breakdown torque : 350 %  
 Rated speed : 3485 rpm

Moment of inertia (J) : 0.2233 sq.ft.lb  
 Duty cycle : Cont.(S1)  
 Insulation class : F  
 Service factor : 1.25  
 Temperature rise : 80 K  
 Design : B

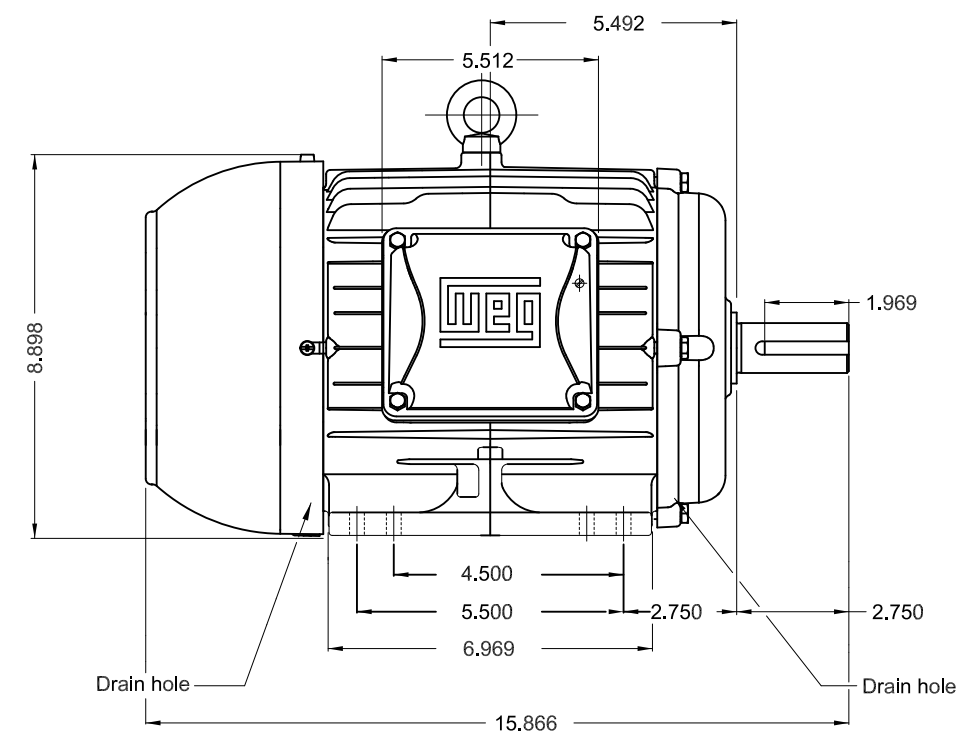
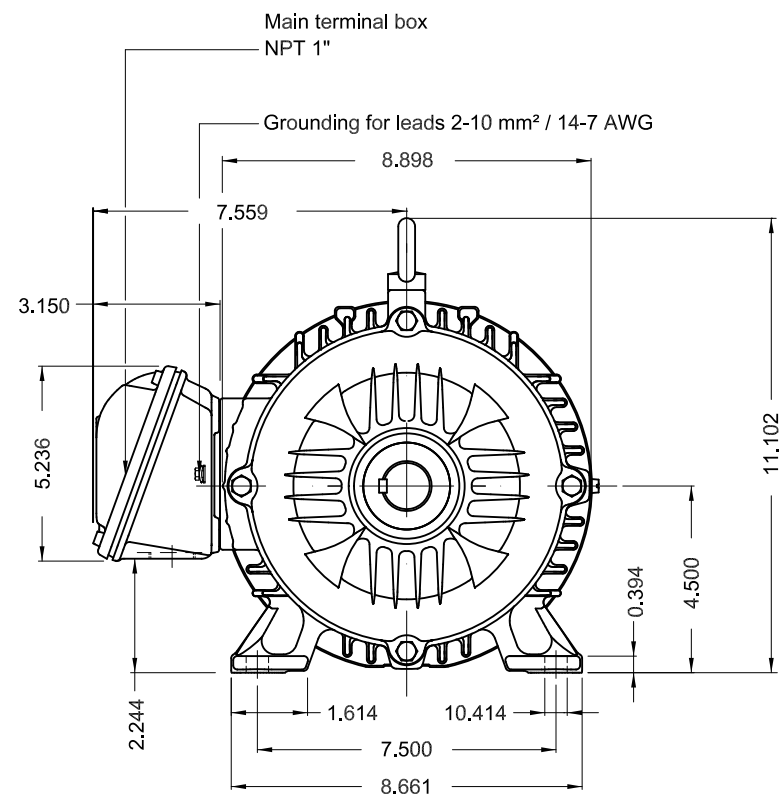
| Rev.         | Changes Summary | Performed | Checked       | Date     |
|--------------|-----------------|-----------|---------------|----------|
|              |                 |           |               |          |
| Performed by |                 |           | Page<br>6 / 6 | Revision |
| Checked by   |                 |           |               |          |
| Date         | 13/04/2022      |           |               |          |

1 2 3 4 5 6

A

B

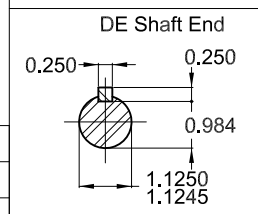
C



D

E

Color RAL 5009  
 Painting plan 207A  
 Mounting B3R(D)



5 HP 02 Poles 60 Hz A

| ECM      | LOC       | SUMMARY OF MODIFICATIONS       | EXECUTED            | CHECKED | RELEASED | DATE | VER |
|----------|-----------|--------------------------------|---------------------|---------|----------|------|-----|
| EXECUTED | PIRWBUSER | THREE PH. MOTOR W22 PREM. EFF. |                     |         |          |      |     |
| CHECKED  |           | FRAME 182/4T IP55 TEFC         |                     |         |          |      |     |
| RELEASED |           |                                |                     |         |          |      |     |
| REL DT.  | WMO       | Jaragua do Sul                 | Product Engineering |         |          |      |     |

**PREVIEW**  
 WDD



SHEET 1 / 1

Dimensions in inches XME A3

MADE IN BRAZIL  
11611340



MODEL 00536ET3H184T-W22

Inverter Duty Motor  
Severe Duty



Class I, Div 2, Gr A, B, C and D - T3  
Class I, Zone 2, IIC - T3  
Class II, Div 2, Gr F and G - T5  
For use on PWM: Gr. A, B, C, D, F and G,  
VT 1000:1, CT 20:1, 1.00SF - T4A



FOR SAFE AREA  
Mod. TE1BFOXON  
CC029A

PH3 60Hz Fr. 182/4T 1000m.a.s.l. IP55 TEFC 911b

V 575

HP 5.0

SF 1.25

RPM 3485

AMB 40°C

DUTY CONT.

A 4.72

kW 3.7

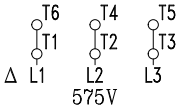
SFA 5.90

PF 0.89

INS cl. F DT80K

DES B Code J

NEMA NOM EFF 88.5%



MOBIL POLYREX EM

