

DATA SHEET

Three Phase Induction Motor - Squirrel Cage



Customer					
Product line		: NEMA Premium Efficiency Three-Phase	Product code :		14325313
			Catalog # :		00718XT3E213T
Frame		: 213/5T	Cooling method		: IC411 - TEFC
Insulation class		: F	Mounting		: F-1
Duty cycle		: Cont.(S1)	Rotation ¹		: Both (CW and CCW)
Ambient temperature		: -20°C to +40°C	Starting method		: Direct On Line
Altitude		: 1000 m.a.s.l.	Approx. weight ²		: 208 lb
Protection degree		: IP55	Moment of inertia (J)		: 1.38 sq.ft.lb
Design		: B			
Output [HP]	7.5	7.5	7.5	7.5	7.5
Poles	4	4	4	4	4
Frequency [Hz]	60	50	50	50	50
Rated voltage [V]	230/460	380	400	415	415
Rated current [A]	18.8/9.41	11.2	10.7	10.6	10.6
L. R. Amperes [A]	126/63.0	61.6	68.5	72.1	72.1
LRC [A]	6.7x(Code H)	5.5x(Code F)	6.4x(Code H)	6.8x(Code H)	6.8x(Code H)
No load current [A]	8.00/4.00	4.10	4.40	4.60	4.60
Rated speed [RPM]	1765	1460	1460	1465	1465
Slip [%]	1.94	2.67	2.67	2.33	2.33
Rated torque [ft.lb]	22.3	27.0	27.0	26.9	26.9
Locked rotor torque [%]	240	170	180	210	210
Breakdown torque [%]	280	200	280	270	270
Service factor	1.15	1.00	1.00	1.00	1.00
Temperature rise	80 K	80 K	80 K	80 K	80 K
Locked rotor time	21s (cold) 12s (hot)	21s (cold) 12s (hot)	21s (cold) 12s (hot)	21s (cold) 12s (hot)	21s (cold) 12s (hot)
Noise level ²	58.0 dB(A)	56.0 dB(A)	56.0 dB(A)	56.0 dB(A)	56.0 dB(A)
Efficiency (%)	25%	89.4	88.2	87.6	87.7
	50%	90.2	88.5	88.5	88.5
	75%	91.0	89.5	89.5	89.5
	100%	91.7	89.5	90.2	90.2
Power Factor	25%	0.38	0.43	0.40	0.38
	50%	0.60	0.66	0.63	0.61
	75%	0.73	0.77	0.75	0.73
	100%	0.80	0.83	0.82	0.80
Bearing type		Drive end : 6308 2RS	Non drive end : 6207 2RS	Foundation loads	
Sealing		: Oil Seal	: Lip Seal	Max. traction : 305 lb	
Lubrication interval		: -	: -	Max. compression : 514 lb	
Lubricant amount		: -	: -		
Lubricant type		: Mobil Polyrex EM			
Notes					
USABLE @208V 20.8A SF 1.15 SFA 23.9A					
This revision replaces and cancel the previous one, which must be eliminated. (1) Looking the motor from the shaft end. (2) Measured at 1m and with tolerance of +3dB(A). (3) Approximate weight subject to changes after manufacturing process. (4) At 100% of full load.			These are average values based on tests with sinusoidal power supply, subject to the tolerances stipulated in NEMA MG-1.		
Rev.	Changes Summary		Performed	Checked	Date
Performed by					
Checked by				Page	Revision
Date	13/04/2022			1 / 22	

DATA SHEET

Three Phase Induction Motor - Squirrel Cage



Customer : _____

Thermal protection

ID	Application	Type	Quantity	Sensing Temperature
1	Winding	Thermostat - 2 wires	1 x Phase	155 °C

Rev.	Changes Summary	Performed	Checked	Date
Performed by				
Checked by			Page	Revision
Date	13/04/2022		2 / 22	

TORQUE AND CURRENT VS SPEED CURVE



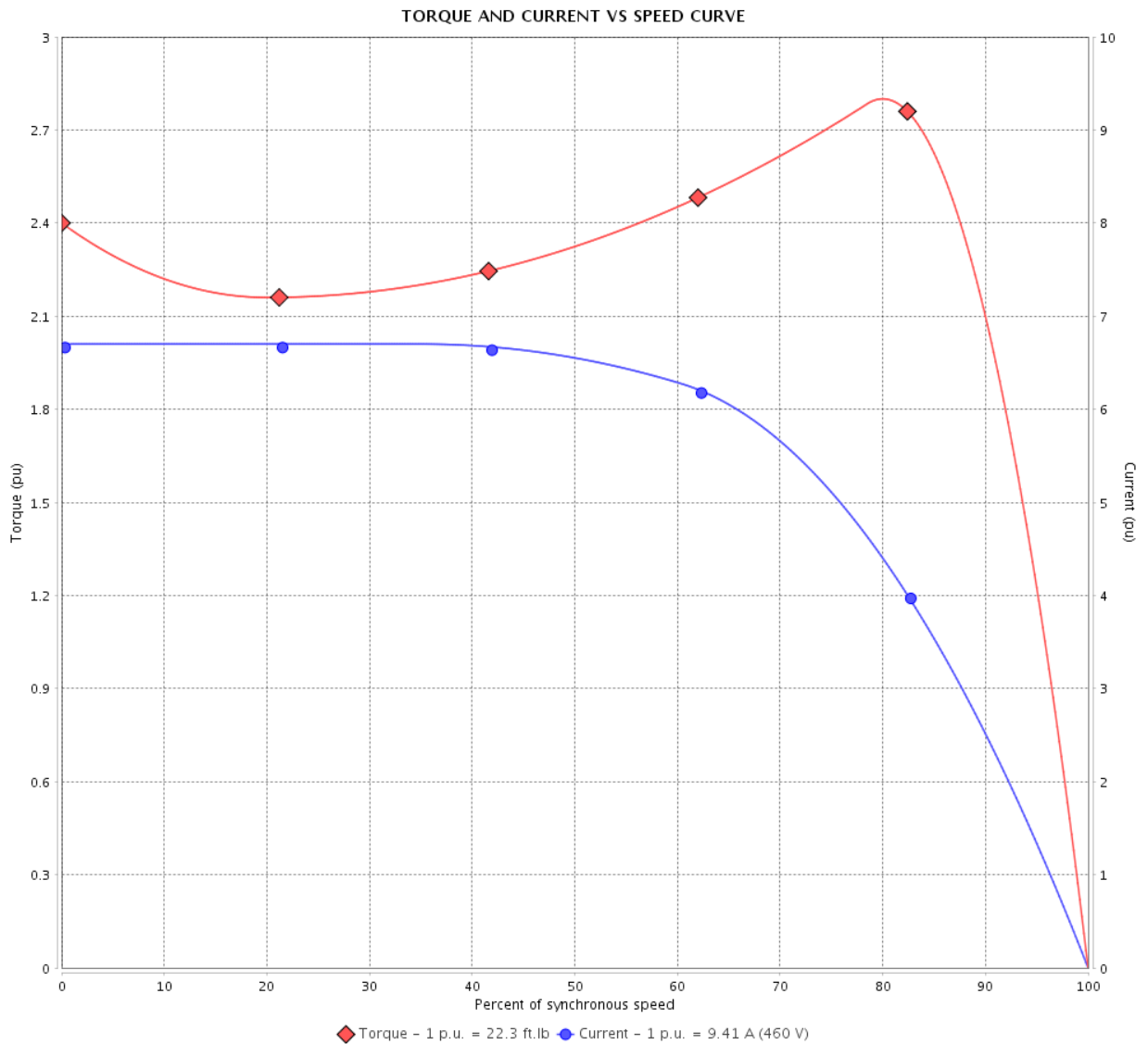
Three Phase Induction Motor - Squirrel Cage

Customer :

Product line : NEMA Premium Efficiency Three-Phase

Product code : 14325313

Catalog # : 00718XT3E213T



Performance : 230/460 V 60 Hz 4P

Rated current : 18.8/9.41 A
 LRC : 6.7
 Rated torque : 22.3 ft.lb
 Locked rotor torque : 240 %
 Breakdown torque : 280 %
 Rated speed : 1765 rpm

Moment of inertia (J) : 1.38 sq.ft.lb
 Duty cycle : Cont.(S1)
 Insulation class : F
 Service factor : 1.15
 Temperature rise : 80 K
 Design : B

Locked rotor time : 21s (cold) 12s (hot)

Rev.	Changes Summary	Performed	Checked	Date
Performed by			Page 3 / 22	Revision
Checked by				
Date	13/04/2022			

TORQUE AND CURRENT VS SPEED CURVE

Three Phase Induction Motor - Squirrel Cage



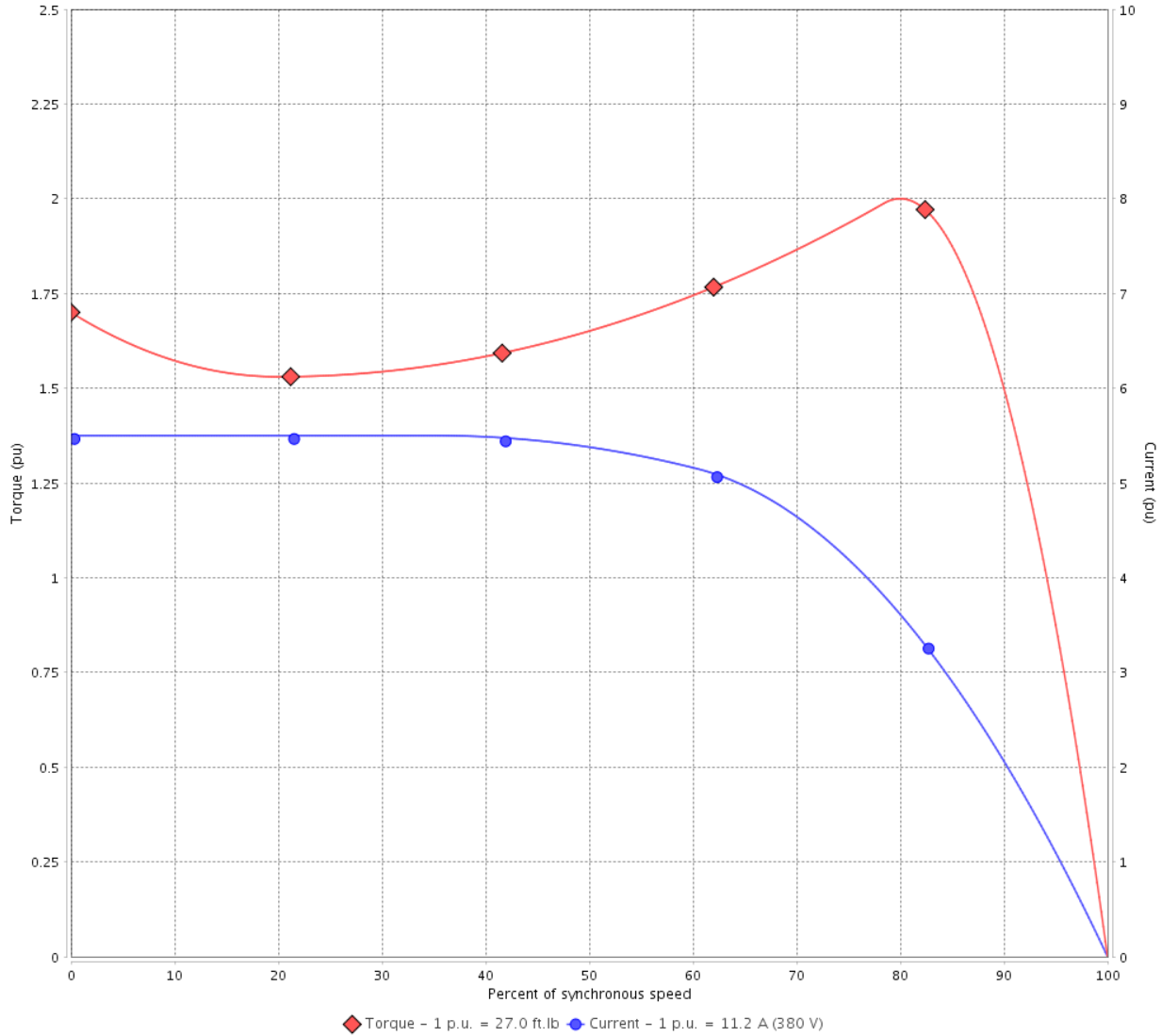
Customer :

Product line : NEMA Premium Efficiency Three-Phase

Product code : 14325313

Catalog # : 00718XT3E213T

TORQUE AND CURRENT VS SPEED CURVE



Performance : 380 V 50 Hz 4P IE2

Rated current	: 11.2 A	Moment of inertia (J)	: 1.38 sq.ft.lb
LRC	: 5.5	Duty cycle	: Cont.(S1)
Rated torque	: 27.0 ft.lb	Insulation class	: F
Locked rotor torque	: 170 %	Service factor	: 1.00
Breakdown torque	: 200 %	Temperature rise	: 80 K
Rated speed	: 1460 rpm	Design	: B

Locked rotor time : 21s (cold) 12s (hot)

Rev.	Changes Summary	Performed	Checked	Date
Performed by			Page 4 / 22	Revision
Checked by				
Date	13/04/2022			

TORQUE AND CURRENT VS SPEED CURVE



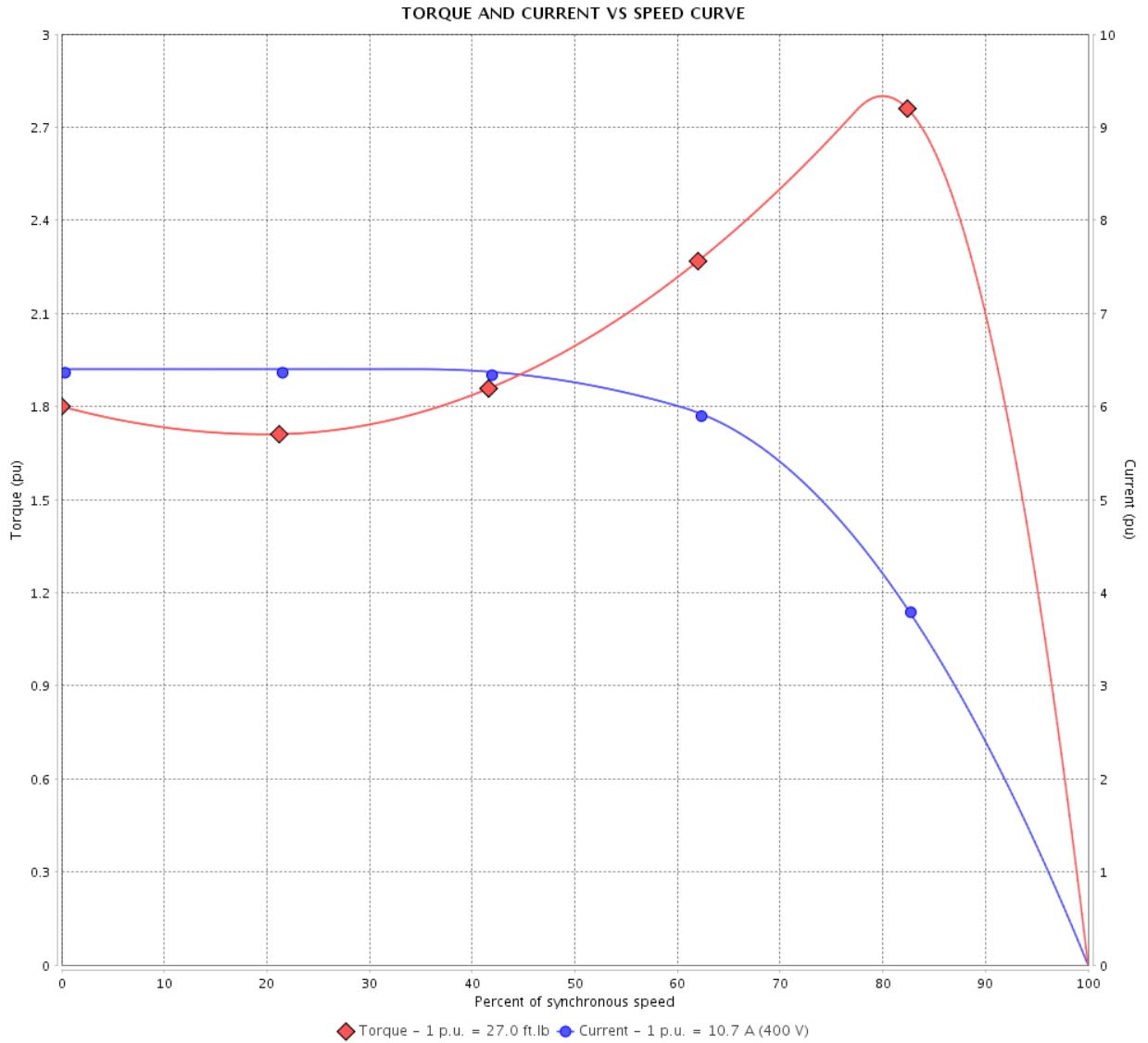
Three Phase Induction Motor - Squirrel Cage

Customer :

Product line : NEMA Premium Efficiency Three-Phase

Product code : 14325313

Catalog # : 00718XT3E213T



Performance : 400 V 50 Hz 4P IE3

Rated current	: 10.7 A	Moment of inertia (J)	: 1.38 sq.ft.lb
LRC	: 6.4	Duty cycle	: Cont.(S1)
Rated torque	: 27.0 ft.lb	Insulation class	: F
Locked rotor torque	: 180 %	Service factor	: 1.00
Breakdown torque	: 280 %	Temperature rise	: 80 K
Rated speed	: 1460 rpm	Design	: B

Locked rotor time : 21s (cold) 12s (hot)

Rev.	Changes Summary	Performed	Checked	Date
Performed by			Page 5 / 22	Revision
Checked by				
Date	13/04/2022			

TORQUE AND CURRENT VS SPEED CURVE

Three Phase Induction Motor - Squirrel Cage



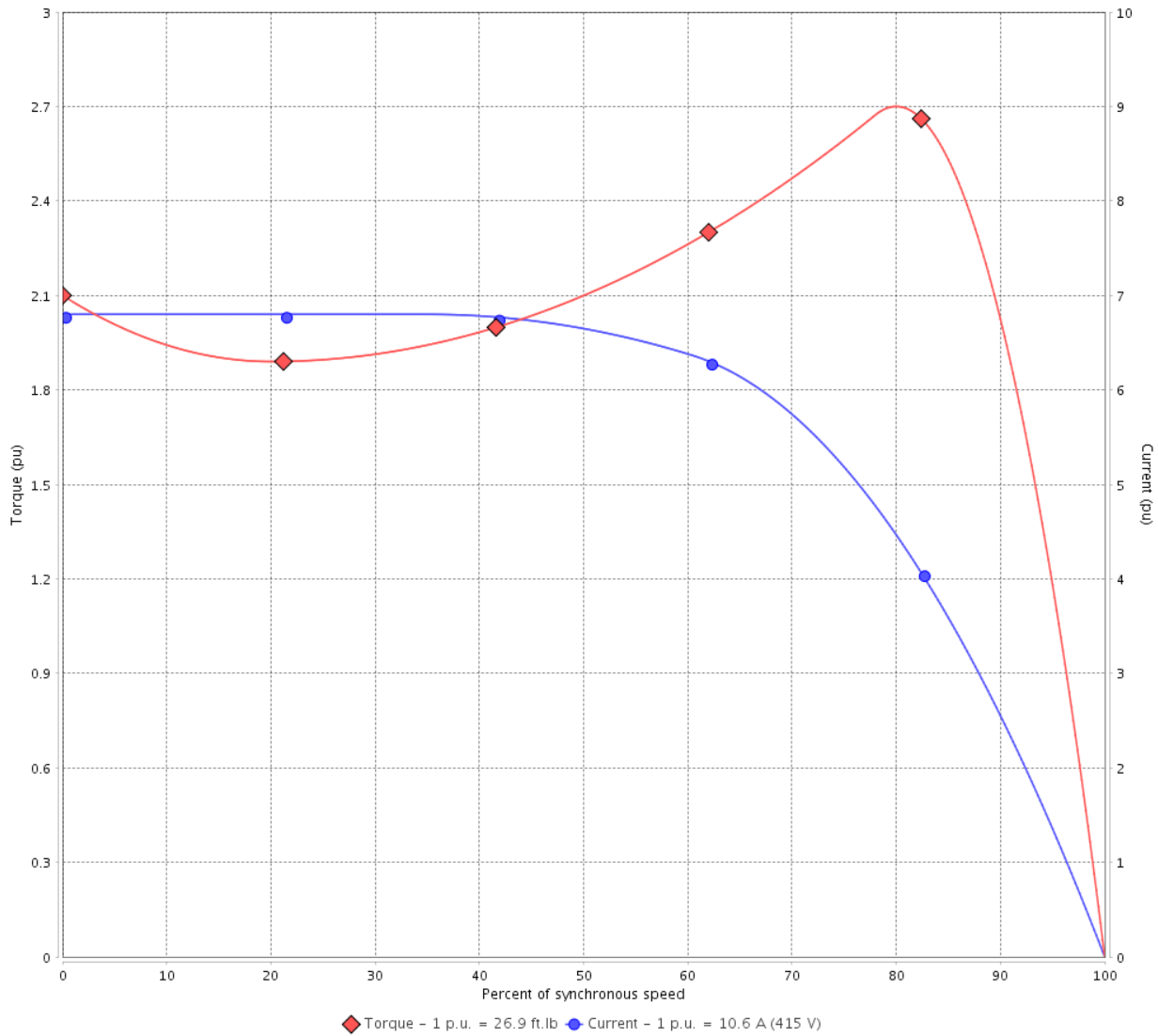
Customer :

Product line : NEMA Premium Efficiency Three-Phase

Product code : 14325313

Catalog # : 00718XT3E213T

TORQUE AND CURRENT VS SPEED CURVE



Performance : 415 V 50 Hz 4P IE3

Rated current	: 10.6 A	Moment of inertia (J)	: 1.38 sq.ft.lb
LRC	: 6.8	Duty cycle	: Cont.(S1)
Rated torque	: 26.9 ft.lb	Insulation class	: F
Locked rotor torque	: 210 %	Service factor	: 1.00
Breakdown torque	: 270 %	Temperature rise	: 80 K
Rated speed	: 1465 rpm	Design	: B

Locked rotor time : 21s (cold) 12s (hot)

Rev.	Changes Summary	Performed	Checked	Date
Performed by			Page 6 / 22	Revision
Checked by				
Date	13/04/2022			

LOAD PERFORMANCE CURVE

Three Phase Induction Motor - Squirrel Cage

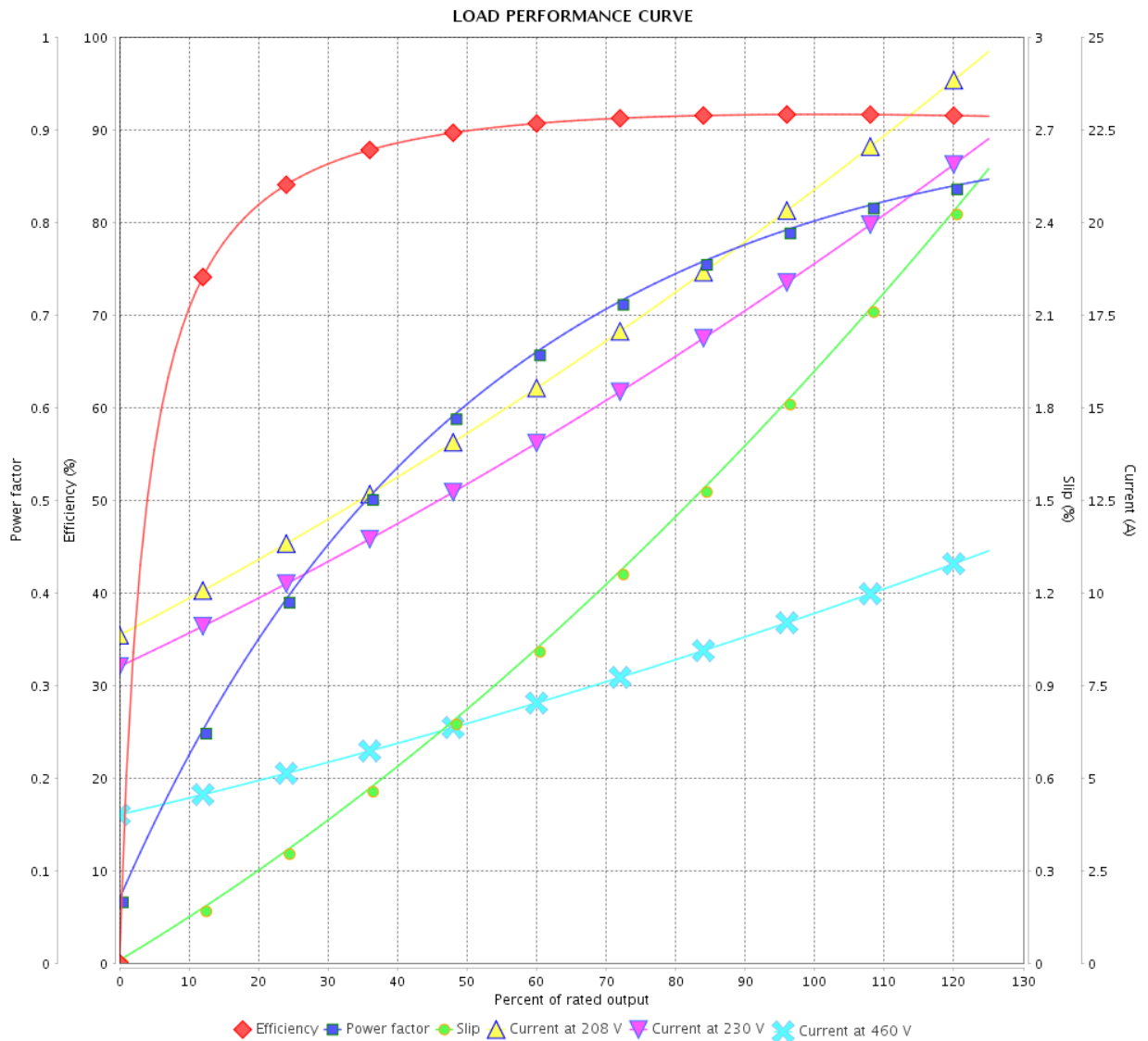


Customer :

Product line : NEMA Premium Efficiency Three-Phase

Product code : 14325313

Catalog # : 00718XT3E213T



Performance : 230/460 V 60 Hz 4P

Rated current : 18.8/9.41 A
 LRC : 6.7
 Rated torque : 22.3 ft.lb
 Locked rotor torque : 240 %
 Breakdown torque : 280 %
 Rated speed : 1765 rpm

Moment of inertia (J) : 1.38 sq.ft.lb
 Duty cycle : Cont.(S1)
 Insulation class : F
 Service factor : 1.15
 Temperature rise : 80 K
 Design : B

Rev.	Changes Summary	Performed	Checked	Date
Performed by		Page		Revision
Checked by		7 / 22		
Date		13/04/2022		

LOAD PERFORMANCE CURVE

Three Phase Induction Motor - Squirrel Cage



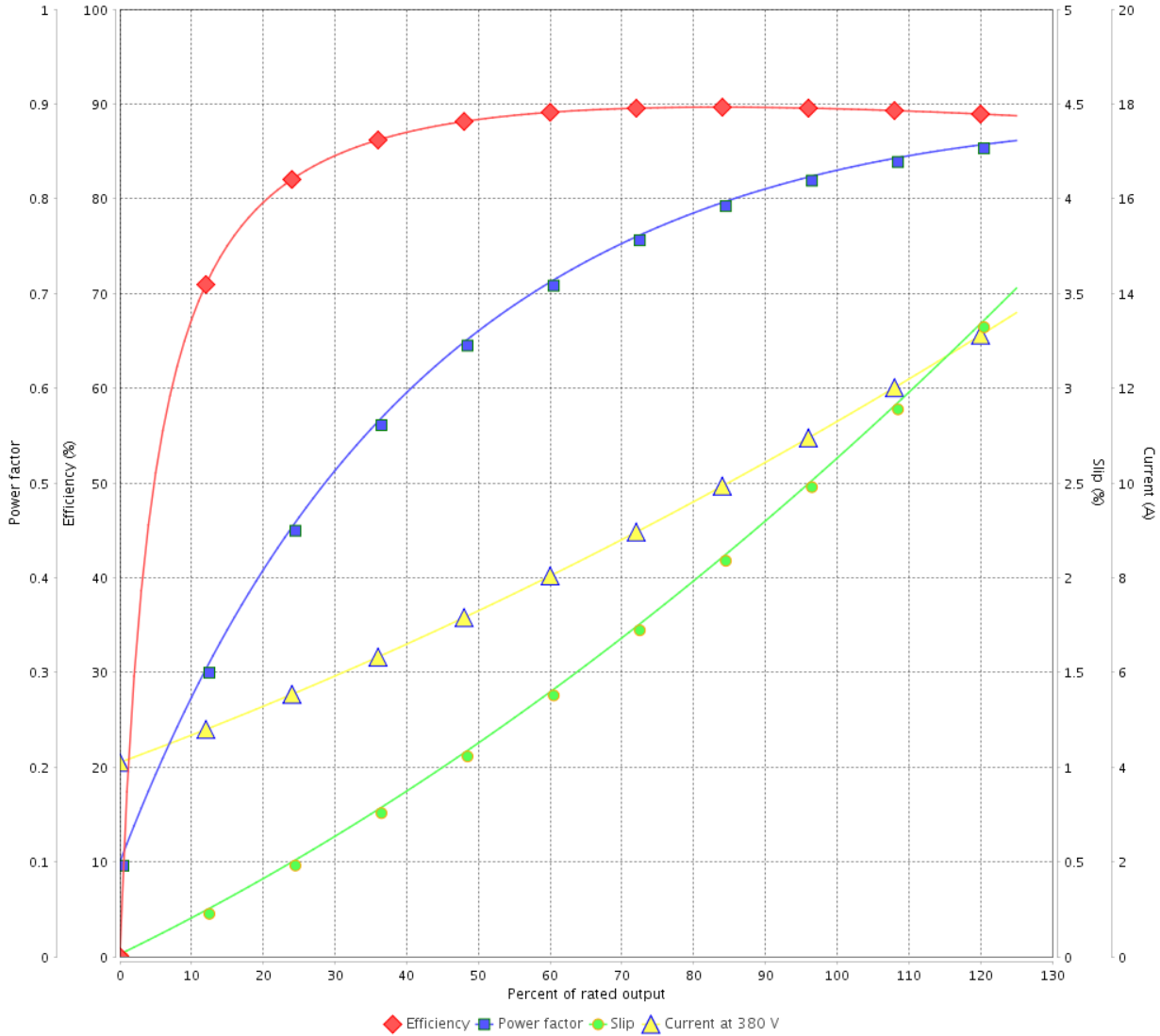
Customer :

Product line : NEMA Premium Efficiency Three-Phase

Product code : 14325313

Catalog # : 00718XT3E213T

LOAD PERFORMANCE CURVE



Performance : 380 V 50 Hz 4P IE2

Rated current : 11.2 A
 LRC : 5.5
 Rated torque : 27.0 ft.lb
 Locked rotor torque : 170 %
 Breakdown torque : 200 %
 Rated speed : 1460 rpm

Moment of inertia (J) : 1.38 sq.ft.lb
 Duty cycle : Cont.(S1)
 Insulation class : F
 Service factor : 1.00
 Temperature rise : 80 K
 Design : B

Rev.	Changes Summary	Performed	Checked	Date
Performed by			Page 8 / 22	Revision
Checked by				
Date	13/04/2022			

LOAD PERFORMANCE CURVE

Three Phase Induction Motor - Squirrel Cage

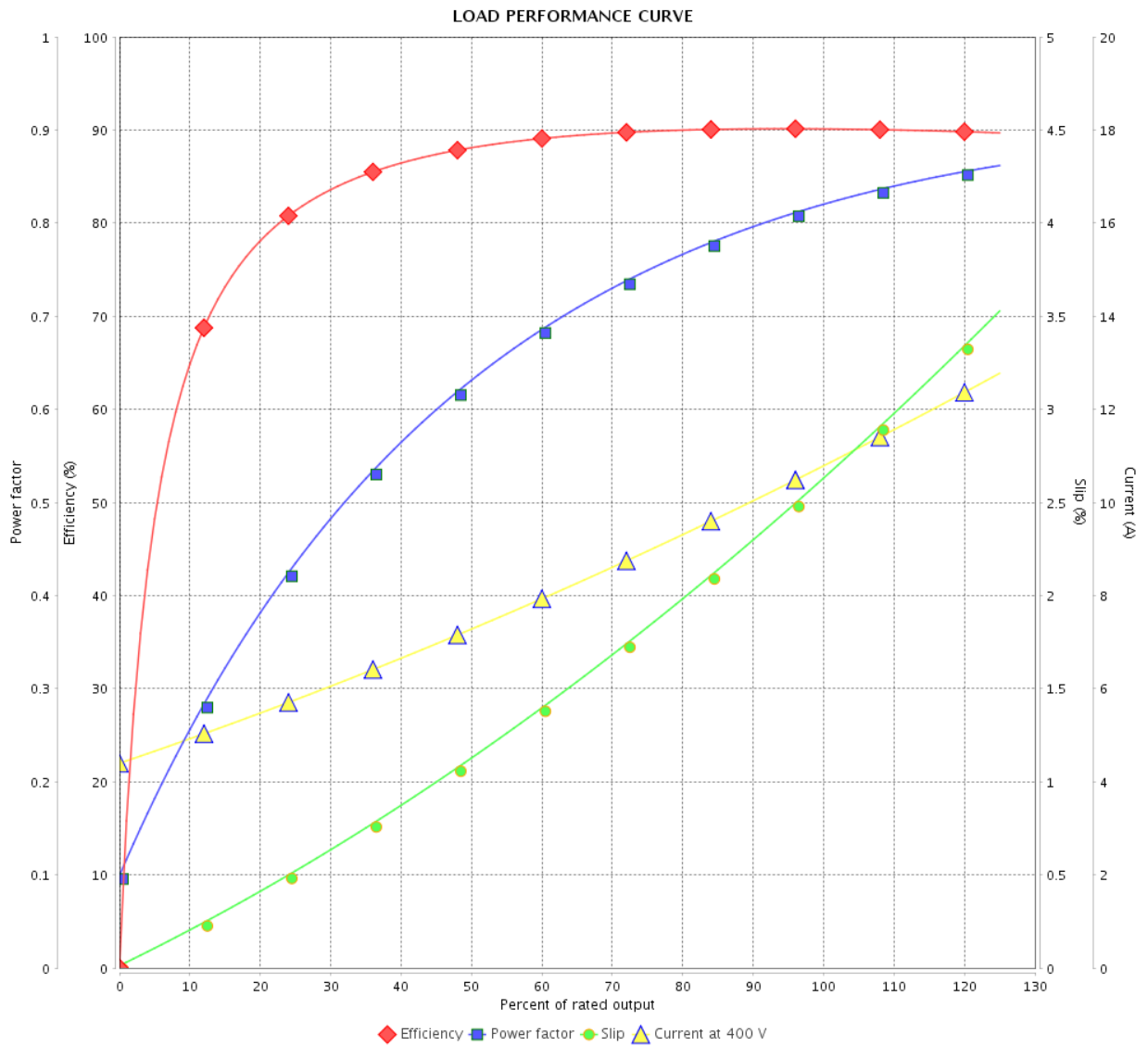


Customer :

Product line : NEMA Premium Efficiency Three-Phase

Product code : 14325313

Catalog # : 00718XT3E213T



Performance : 400 V 50 Hz 4P IE3

Rated current : 10.7 A
 LRC : 6.4
 Rated torque : 27.0 ft.lb
 Locked rotor torque : 180 %
 Breakdown torque : 280 %
 Rated speed : 1460 rpm

Moment of inertia (J) : 1.38 sq.ft.lb
 Duty cycle : Cont.(S1)
 Insulation class : F
 Service factor : 1.00
 Temperature rise : 80 K
 Design : B

Rev.	Changes Summary	Performed	Checked	Date
Performed by			Page	Revision
Checked by				
Date				

LOAD PERFORMANCE CURVE

Three Phase Induction Motor - Squirrel Cage



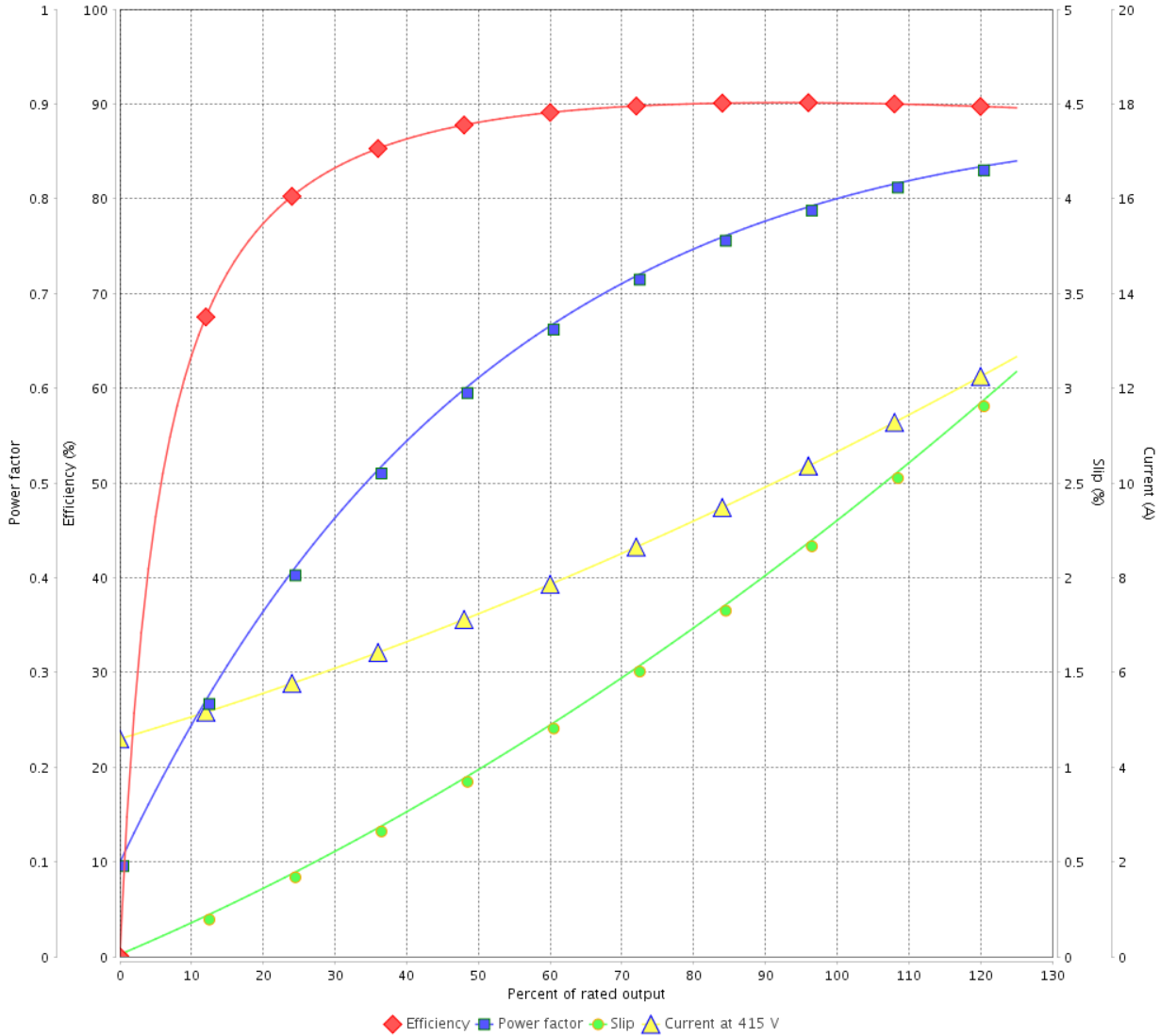
Customer :

Product line : NEMA Premium Efficiency Three-Phase

Product code : 14325313

Catalog # : 00718XT3E213T

LOAD PERFORMANCE CURVE



Performance : 415 V 50 Hz 4P IE3

Rated current : 10.6 A
 LRC : 6.8
 Rated torque : 26.9 ft.lb
 Locked rotor torque : 210 %
 Breakdown torque : 270 %
 Rated speed : 1465 rpm

Moment of inertia (J) : 1.38 sq.ft.lb
 Duty cycle : Cont.(S1)
 Insulation class : F
 Service factor : 1.00
 Temperature rise : 80 K
 Design : B

Rev.	Changes Summary	Performed	Checked	Date
Performed by			Page 10 / 22	Revision
Checked by				
Date	13/04/2022			

THERMAL LIMIT CURVE



Three Phase Induction Motor - Squirrel Cage

Customer :

Product line : NEMA Premium Efficiency Three-Phase
 Product code : 14325313
 Catalog # : 00718XT3E213T

Performance : 230/460 V 60 Hz 4P

Rated current : 18.8/9.41 A	Moment of inertia (J) : 1.38 sq.ft.lb
LRC : 6.7	Duty cycle : Cont.(S1)
Rated torque : 22.3 ft.lb	Insulation class : F
Locked rotor torque : 240 %	Service factor : 1.15
Breakdown torque : 280 %	Temperature rise : 80 K
Rated speed : 1765 rpm	Design : B

Heating constant

Cooling constant

Rev.	Changes Summary	Performed	Checked	Date
Performed by			Page 11 / 22	Revision
Checked by				
Date	13/04/2022			

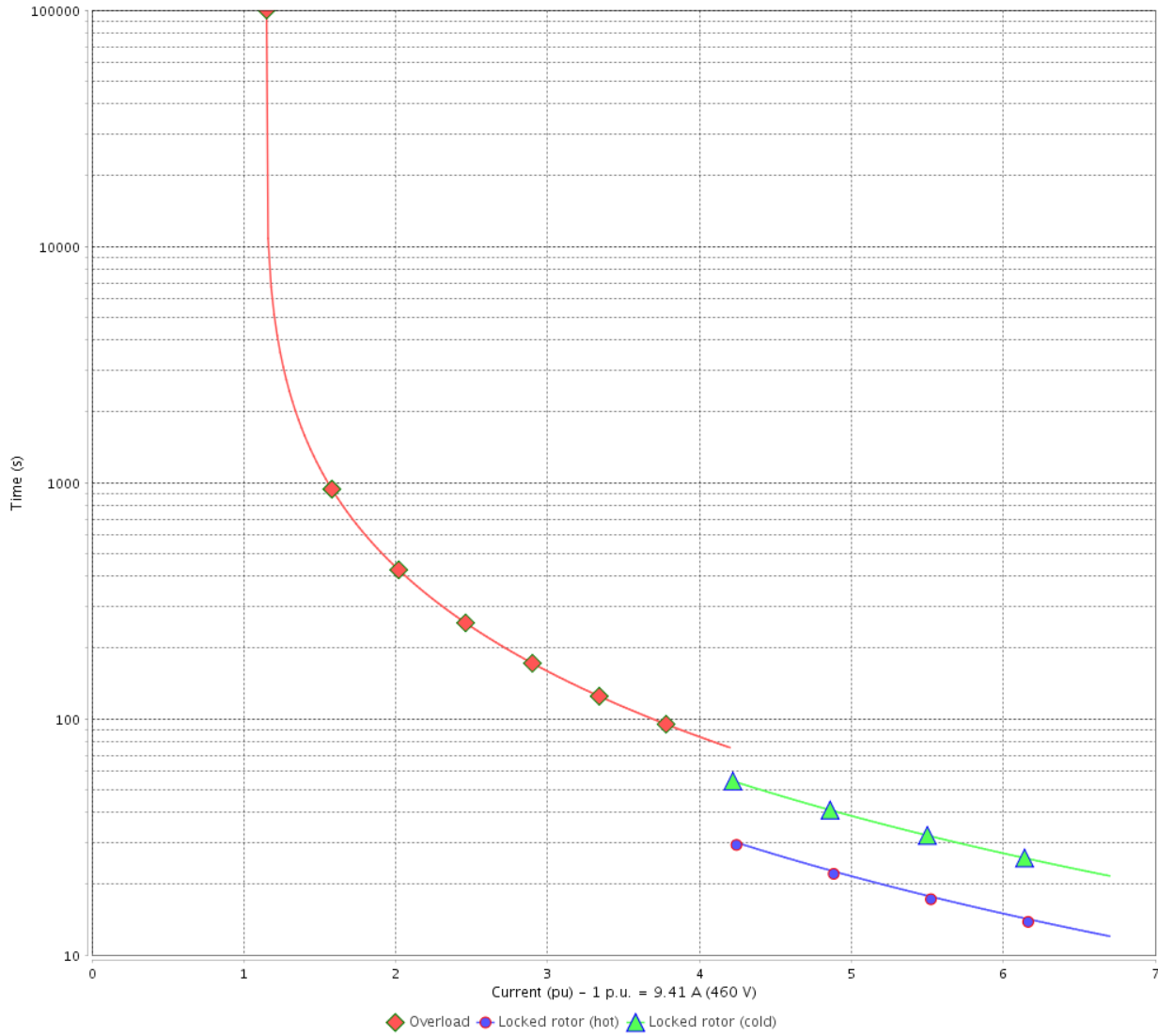
THERMAL LIMIT CURVE

Three Phase Induction Motor - Squirrel Cage



Customer : _____

THERMAL LIMIT CURVE



Rev.	Changes Summary	Performed	Checked	Date
Performed by			Page 12 / 22	Revision
Checked by				
Date	13/04/2022			

THERMAL LIMIT CURVE



Three Phase Induction Motor - Squirrel Cage

Customer :

Product line : NEMA Premium Efficiency Three-Phase
 Product code : 14325313
 Catalog # : 00718XT3E213T

Performance : 380 V 50 Hz 4P IE2

Rated current : 11.2 A	Moment of inertia (J) : 1.38 sq.ft.lb
LRC : 5.5	Duty cycle : Cont.(S1)
Rated torque : 27.0 ft.lb	Insulation class : F
Locked rotor torque : 170 %	Service factor : 1.00
Breakdown torque : 200 %	Temperature rise : 80 K
Rated speed : 1460 rpm	Design : B

Heating constant

Cooling constant

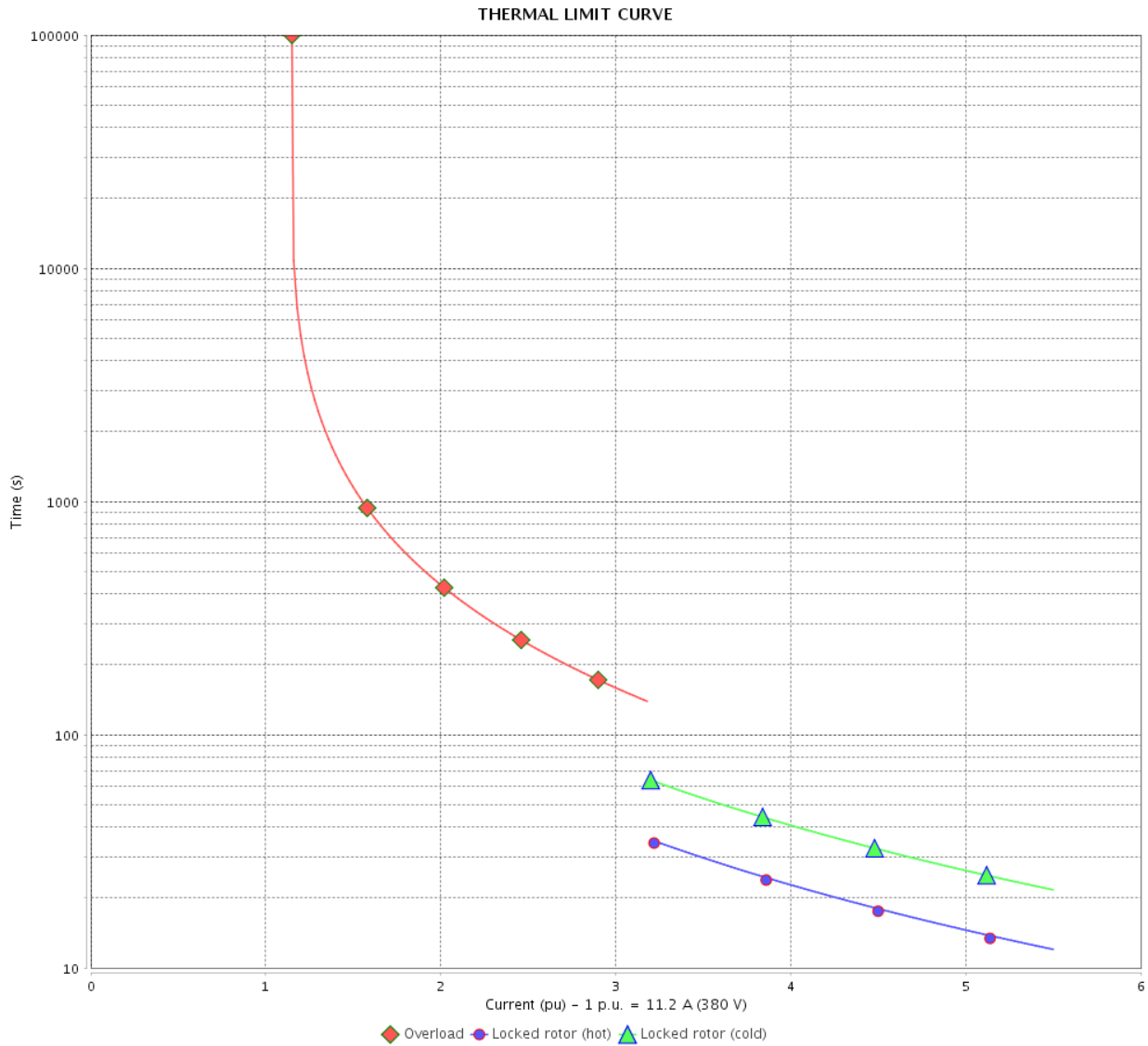
Rev.	Changes Summary	Performed	Checked	Date
Performed by			Page 13 / 22	Revision
Checked by				
Date	13/04/2022			

THERMAL LIMIT CURVE

Three Phase Induction Motor - Squirrel Cage



Customer : _____



Rev.	Changes Summary	Performed	Checked	Date
Performed by		Page		Revision
Checked by		14 / 22		
Date		13/04/2022		

THERMAL LIMIT CURVE



Three Phase Induction Motor - Squirrel Cage

Customer :

Product line : NEMA Premium Efficiency Three-Phase
 Product code : 14325313
 Catalog # : 00718XT3E213T

Performance : 400 V 50 Hz 4P IE3

Rated current : 10.7 A	Moment of inertia (J) : 1.38 sq.ft.lb
LRC : 6.4	Duty cycle : Cont.(S1)
Rated torque : 27.0 ft.lb	Insulation class : F
Locked rotor torque : 180 %	Service factor : 1.00
Breakdown torque : 280 %	Temperature rise : 80 K
Rated speed : 1460 rpm	Design : B

Heating constant

Cooling constant

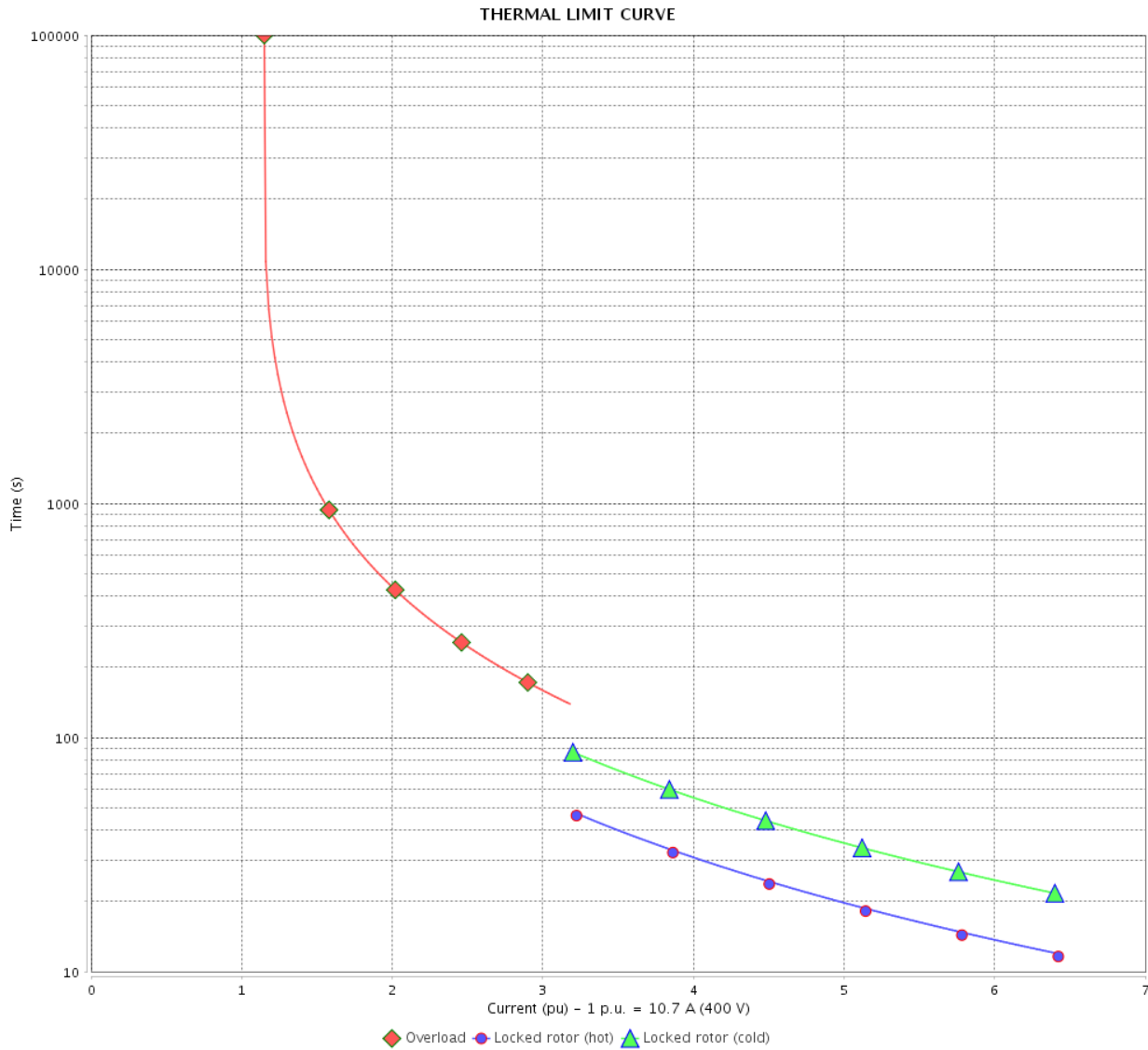
Rev.	Changes Summary	Performed	Checked	Date
Performed by			Page 15 / 22	Revision
Checked by				
Date	13/04/2022			

THERMAL LIMIT CURVE

Three Phase Induction Motor - Squirrel Cage



Customer : _____



Rev.	Changes Summary	Performed	Checked	Date
Performed by		Page		Revision
Checked by		16 / 22		
Date		13/04/2022		

THERMAL LIMIT CURVE



Three Phase Induction Motor - Squirrel Cage

Customer :

Product line : NEMA Premium Efficiency Three-Phase
 Product code : 14325313
 Catalog # : 00718XT3E213T

Performance : 415 V 50 Hz 4P IE3

Rated current : 10.6 A	Moment of inertia (J) : 1.38 sq.ft.lb
LRC : 6.8	Duty cycle : Cont.(S1)
Rated torque : 26.9 ft.lb	Insulation class : F
Locked rotor torque : 210 %	Service factor : 1.00
Breakdown torque : 270 %	Temperature rise : 80 K
Rated speed : 1465 rpm	Design : B

Heating constant

Cooling constant

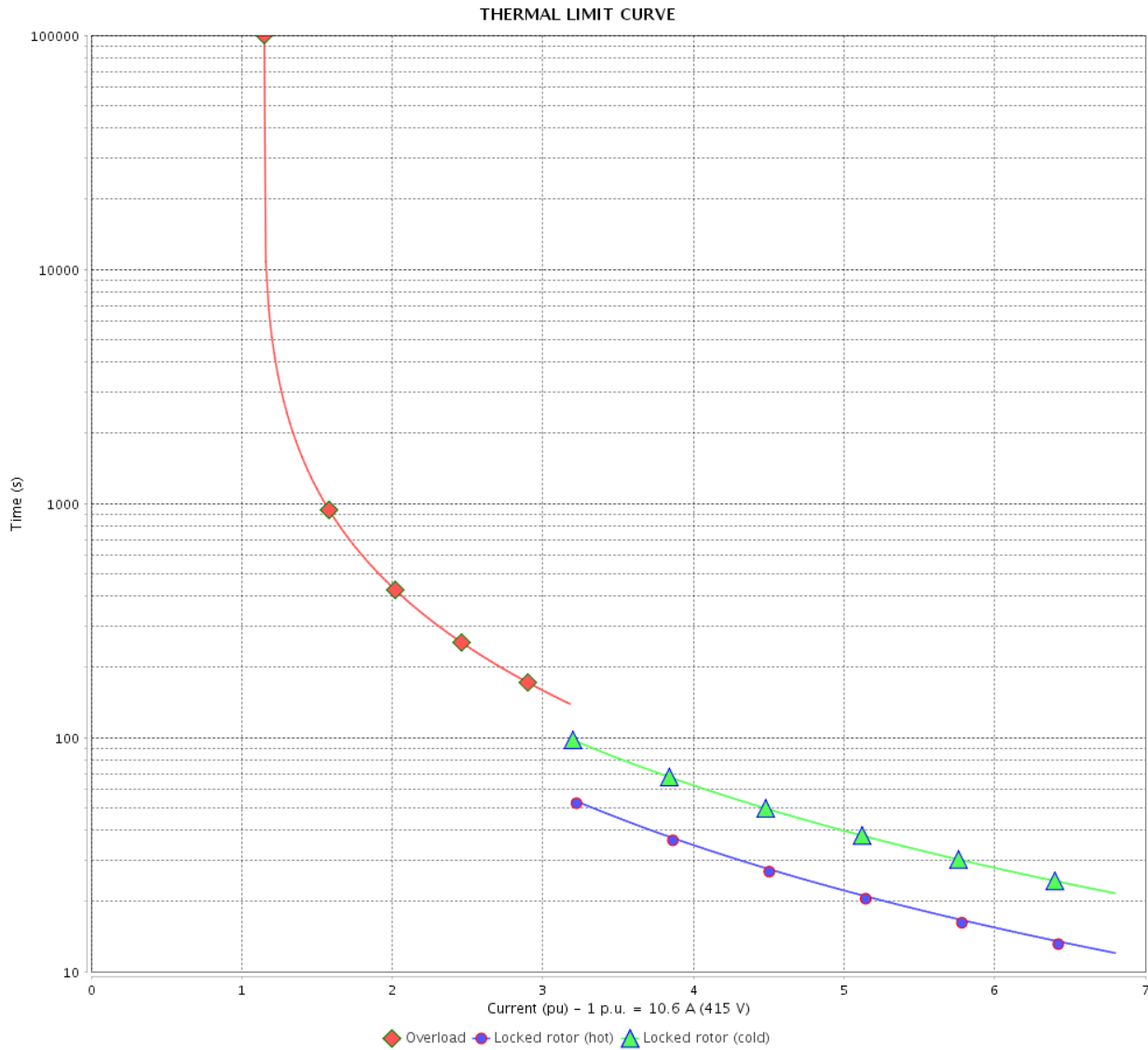
Rev.	Changes Summary	Performed	Checked	Date
Performed by			Page	Revision
Checked by				
Date	13/04/2022			

THERMAL LIMIT CURVE

Three Phase Induction Motor - Squirrel Cage



Customer : _____



Rev.	Changes Summary	Performed	Checked	Date
Performed by		Page		Revision
Checked by		18 / 22		
Date		13/04/2022		

VFD OPERATION CURVE

Three Phase Induction Motor - Squirrel Cage

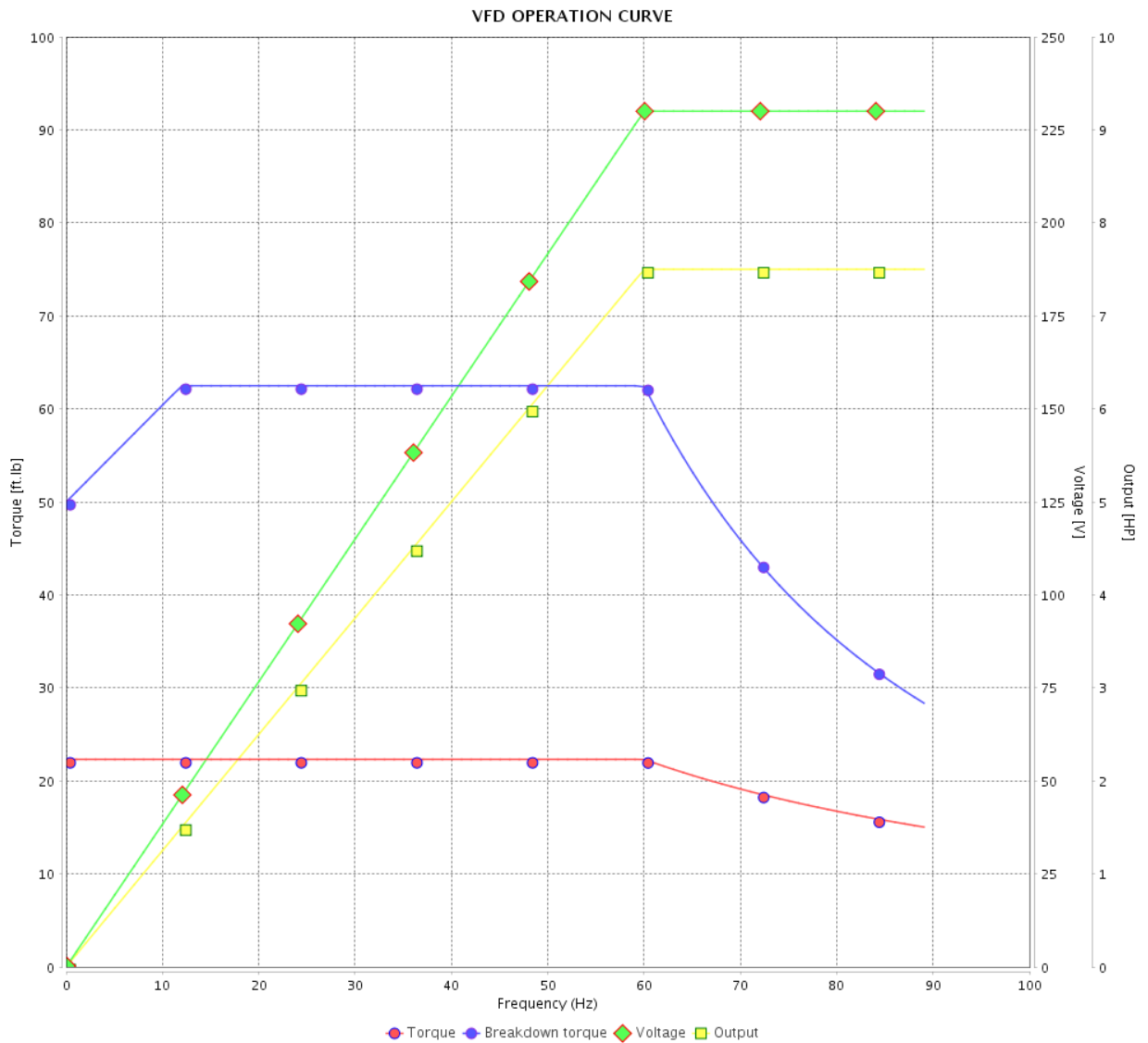


Customer :

Product line : NEMA Premium Efficiency Three-Phase

Product code : 14325313

Catalog # : 00718XT3E213T



Performance : 230/460 V 60 Hz 4P

Rated current : 18.8/9.41 A
 LRC : 6.7
 Rated torque : 22.3 ft.lb
 Locked rotor torque : 240 %
 Breakdown torque : 280 %
 Rated speed : 1765 rpm

Moment of inertia (J) : 1.38 sq.ft.lb
 Duty cycle : Cont.(S1)
 Insulation class : F
 Service factor : 1.15
 Temperature rise : 80 K
 Design : B

Rev.	Changes Summary	Performed	Checked	Date
Performed by				Page 19 / 22
Checked by				
Date	13/04/2022			

VFD OPERATION CURVE

Three Phase Induction Motor - Squirrel Cage



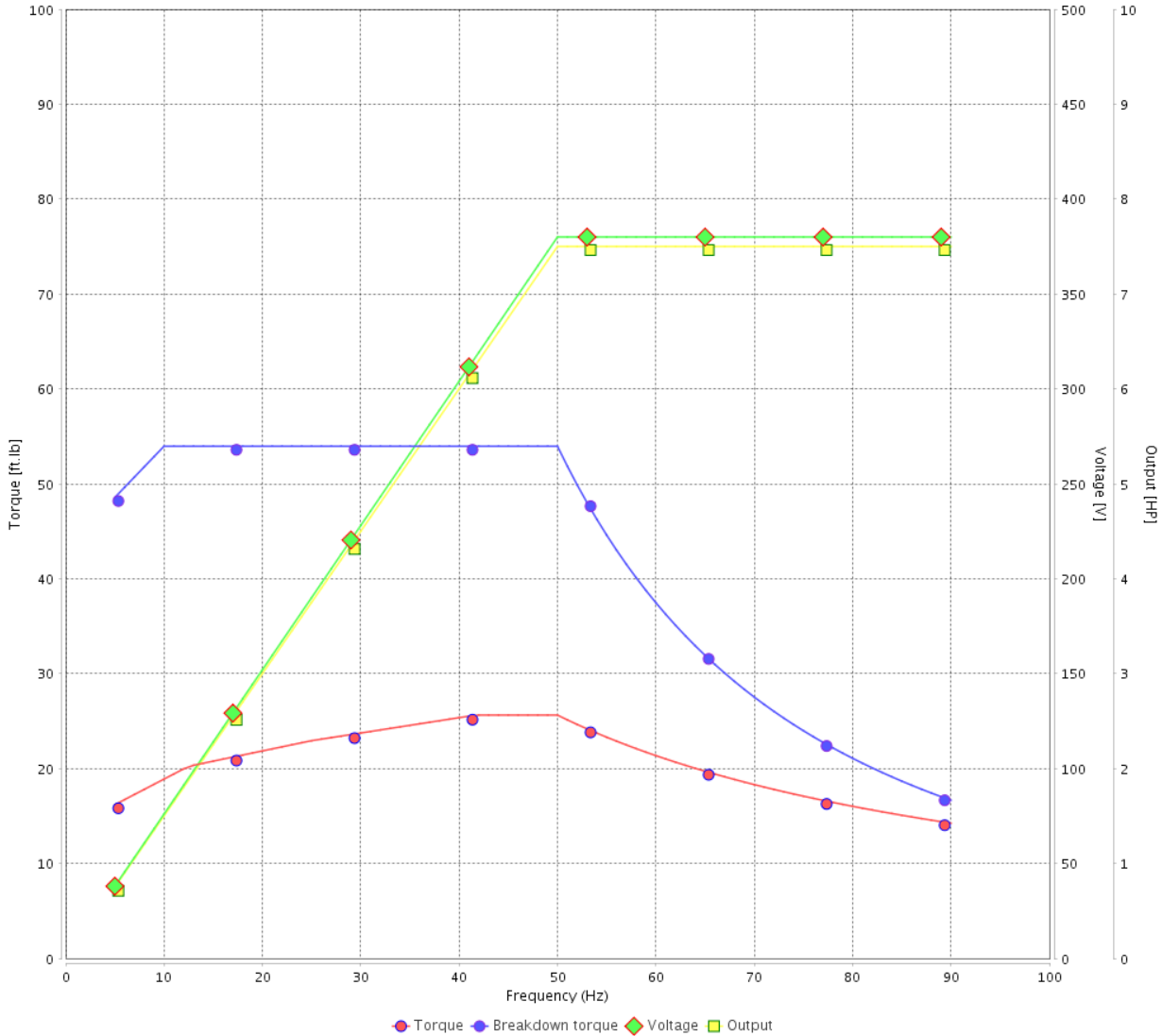
Customer :

Product line : NEMA Premium Efficiency Three-Phase

Product code : 14325313

Catalog # : 00718XT3E213T

VFD OPERATION CURVE



Performance : 380 V 50 Hz 4P IE2

Rated current : 11.2 A
 LRC : 5.5
 Rated torque : 27.0 ft.lb
 Locked rotor torque : 170 %
 Breakdown torque : 200 %
 Rated speed : 1460 rpm

Moment of inertia (J) : 1.38 sq.ft.lb
 Duty cycle : Cont.(S1)
 Insulation class : F
 Service factor : 1.00
 Temperature rise : 80 K
 Design : B

Rev.	Changes Summary	Performed	Checked	Date
Performed by			Page 20 / 22	Revision
Checked by				
Date	13/04/2022			

VFD OPERATION CURVE

Three Phase Induction Motor - Squirrel Cage

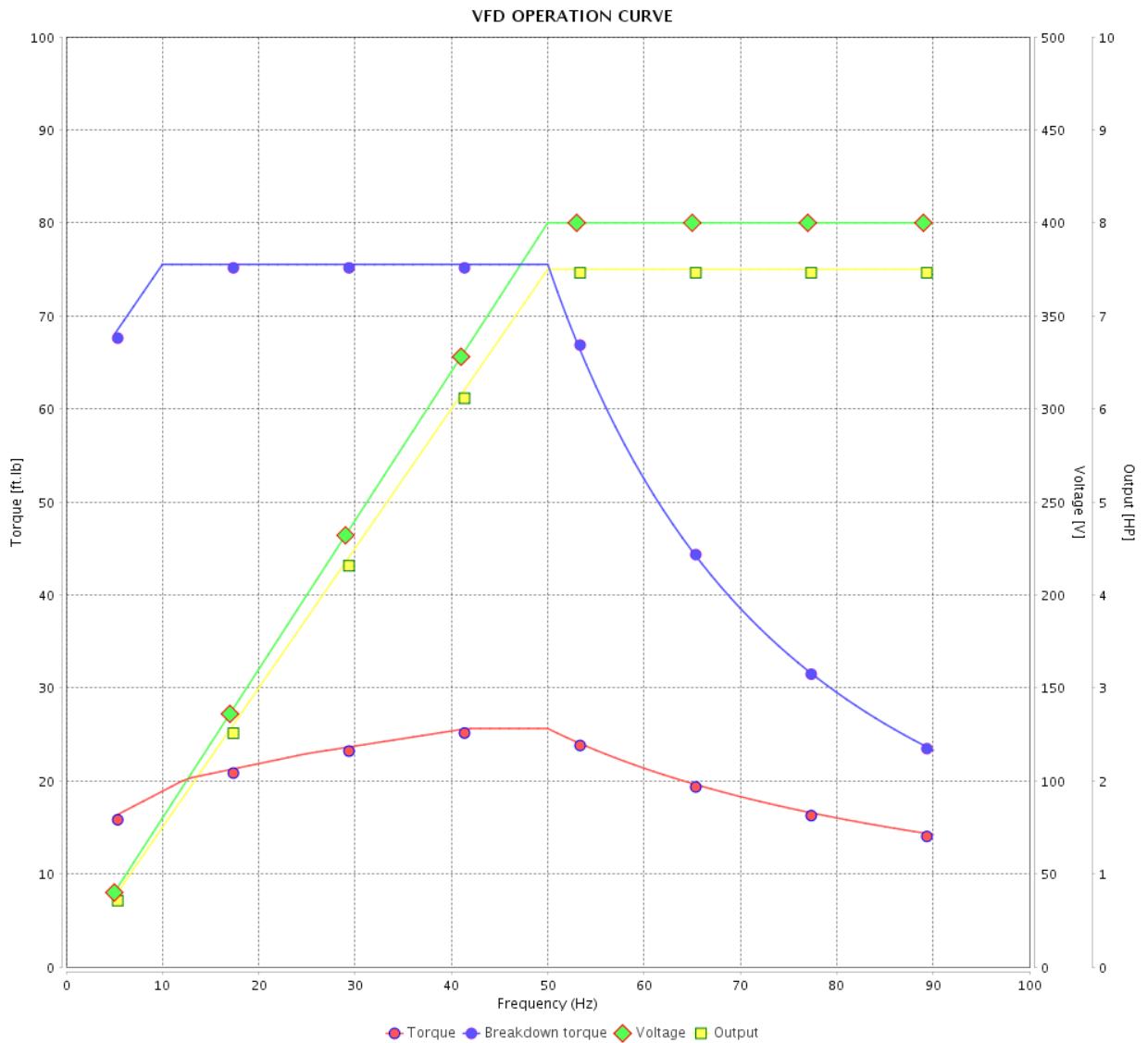


Customer :

Product line : NEMA Premium Efficiency Three-Phase

Product code : 14325313

Catalog # : 00718XT3E213T



Performance : 400 V 50 Hz 4P IE3

Rated current : 10.7 A
 LRC : 6.4
 Rated torque : 27.0 ft.lb
 Locked rotor torque : 180 %
 Breakdown torque : 280 %
 Rated speed : 1460 rpm

Moment of inertia (J) : 1.38 sq.ft.lb
 Duty cycle : Cont.(S1)
 Insulation class : F
 Service factor : 1.00
 Temperature rise : 80 K
 Design : B

Rev.	Changes Summary	Performed	Checked	Date
Performed by		Page		Revision
Checked by		21 / 22		
Date	13/04/2022			

VFD OPERATION CURVE

Three Phase Induction Motor - Squirrel Cage



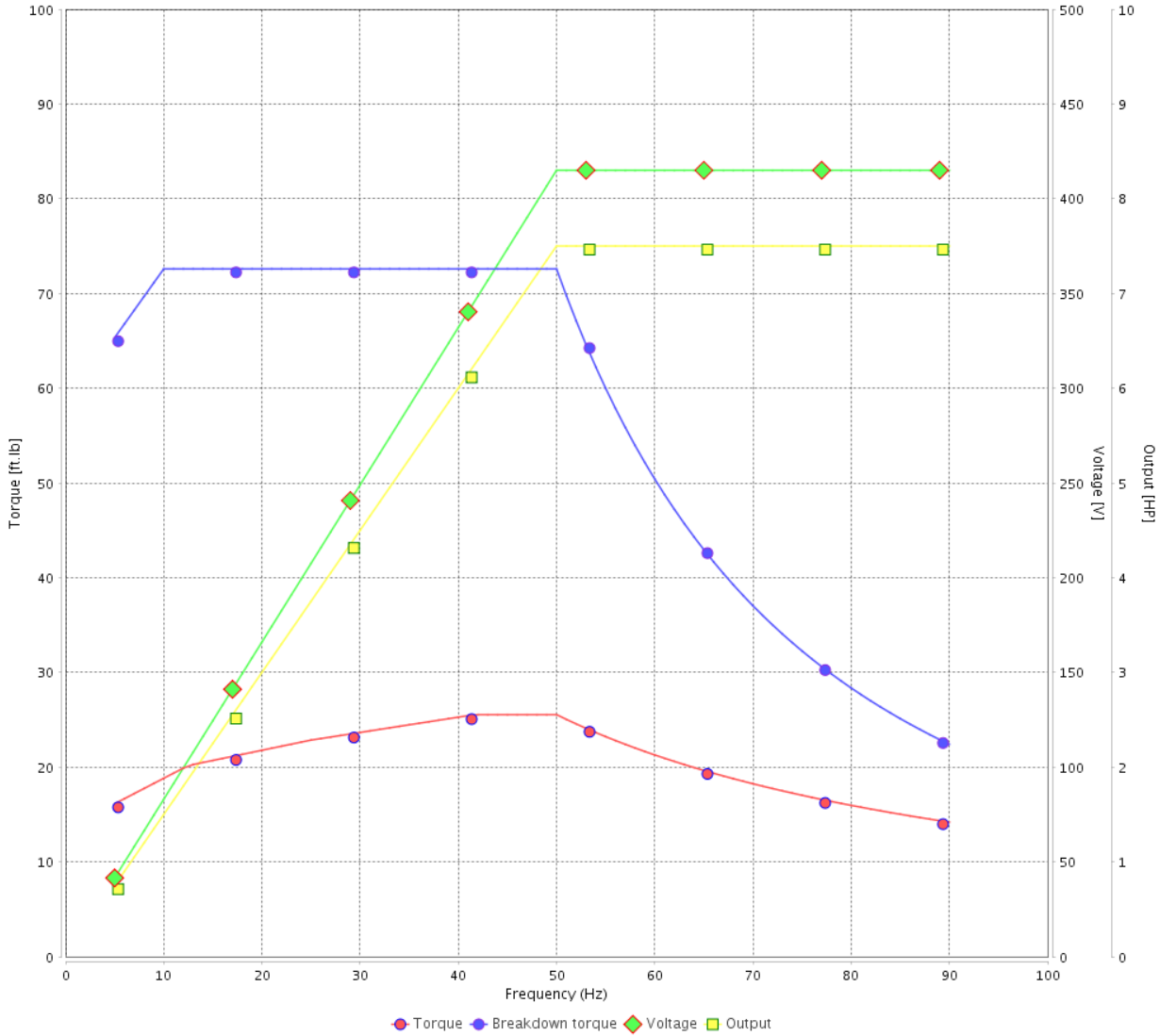
Customer :

Product line : NEMA Premium Efficiency Three-Phase

Product code : 14325313

Catalog # : 00718XT3E213T

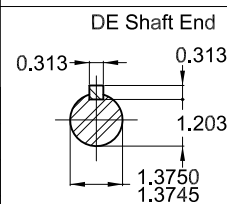
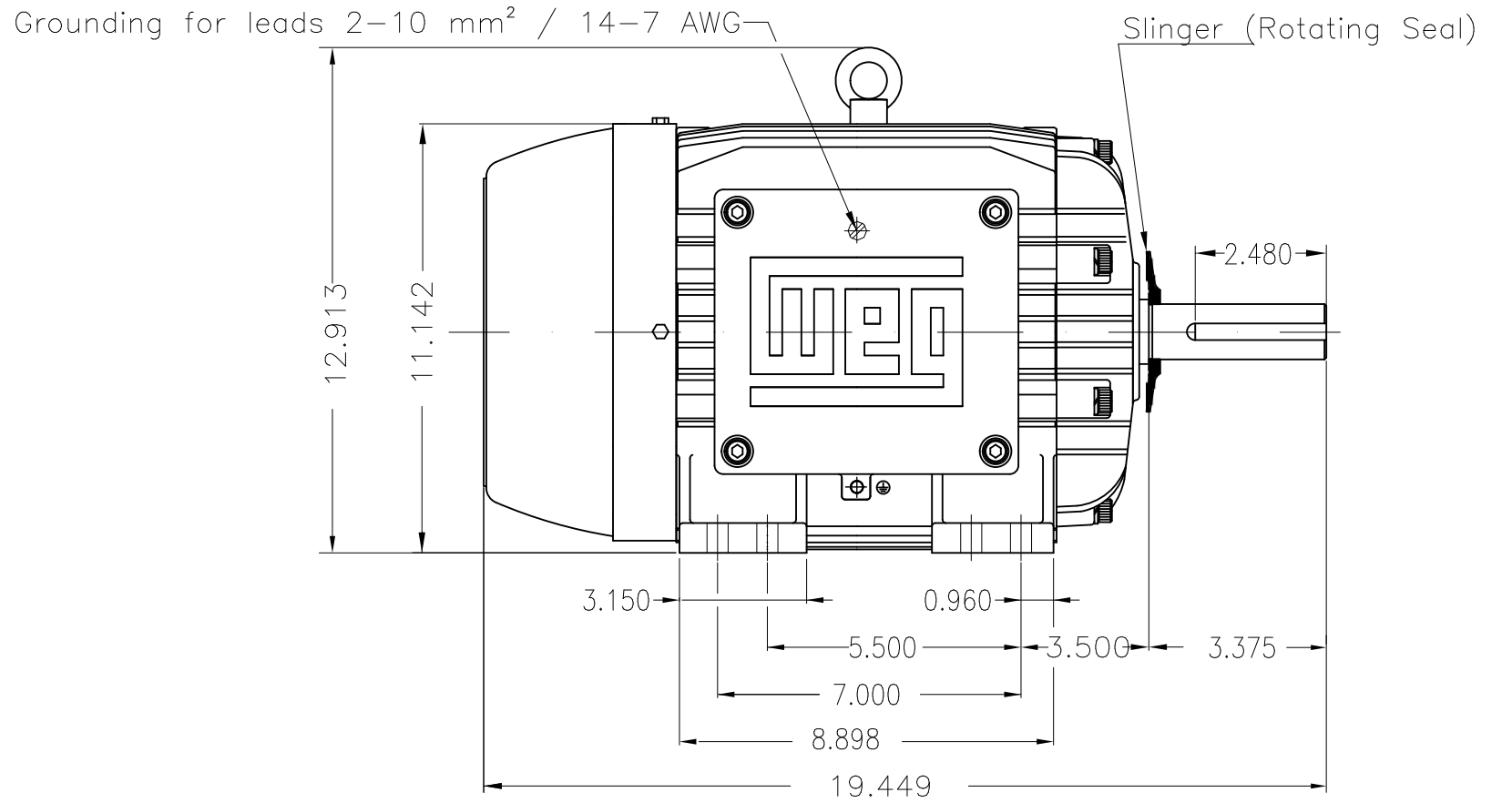
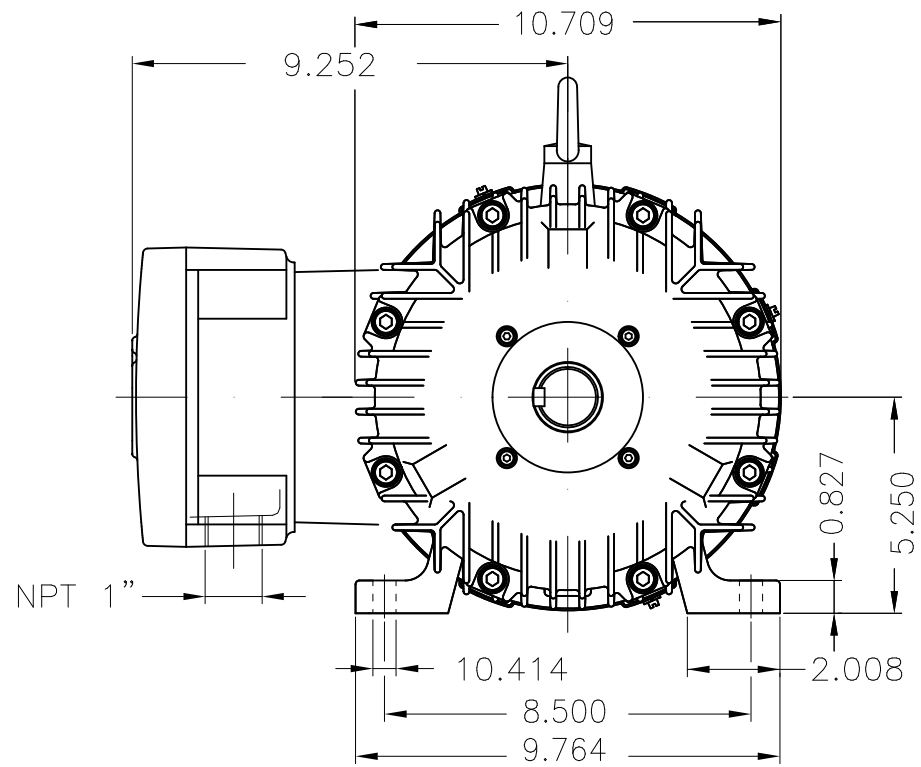
VFD OPERATION CURVE



Performance : 415 V 50 Hz 4P IE3

Rated current	: 10.6 A	Moment of inertia (J)	: 1.38 sq.ft.lb
LRC	: 6.8	Duty cycle	: Cont.(S1)
Rated torque	: 26.9 ft.lb	Insulation class	: F
Locked rotor torque	: 210 %	Service factor	: 1.00
Breakdown torque	: 270 %	Temperature rise	: 80 K
Rated speed	: 1465 rpm	Design	: B

Rev.	Changes Summary	Performed	Checked	Date
Performed by			Page 22 / 22	Revision
Checked by				
Date	13/04/2022			



Color RAL 5009
 Painting plan 202P
 Mounting NEMA F-1
 Mounting B3R(D)

7.5 HP 04 Poles 60 Hz A

ECM	LOC	SUMMARY OF MODIFICATIONS	EXECUTED	CHECKED	RELEASED	DATE	VER
EXECUTED	PIRWBUSER	THREE PH. MOTOR EXPLOSION PROOF PREM. EFF.					
CHECKED		FRAME 213/5T IP55 TEFC					
RELEASED							
REL DT.	WMO	Jaragua do Sul	Product Engineering	SHEET	1 / 1		

PREVIEW
 WDD



MADE IN BRAZIL


W21X NEMA
Premium

14325313

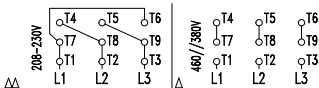
CC029A

Inverter Duty Motor
Severe Duty


LISTED

MODEL 00718XT3E213T

PH 3	FR 213/5T		
HP(kW) 7.5(5.5)		HZ 60	IP55
V 230/460		A 18.8/9.41	
RPM 1765		NEMA NOM EFF 91.7%	
PF 0.80		SFA 21.6/10.8	DES B
INS CL F Δ T 80 K		SF 1.15	ENCL TEFC
DUTY CONT.		CODE H	ALT 1000 m.a.s.l.
AMB 40°C	USABLE @208V	20.8 A	SF 1.15 SFA 23.9
AMB 55°C SF1.0			
7.5HP 5.5kW 50Hz 380V 11.2A 1460RPM SF1.00 EFF 89.5% (IE2)			


 → 6308-2RS MOBIL POLYREX EM
 → 6207-2RS

203 Lbs


 TEMP CODE T3C
 CSA/UL: Class I - Div. 1 - Groups C and D
 CSA: Class II - Div. 1 - Groups F and G
 CSA: Class I - Zone 1 - IIB

EXPLOSION PROOF MOTOR

FOR USE ON VPWM VFD 1000:1VT, 20:1CT, 1.0SF, T3C, AMB 40°C.