

DATA SHEET



Three Phase Induction Motor - Squirrel Cage

Customer :																			
Product line	: NEMA Premium Efficiency Three-Phase																		
Product code :	12124579																		
Catalog # :	00736ET3H184JM-W22																		
Frame : 182/4JM Output : 7.5 HP (5.5 kW) Poles : 2 Frequency : 60 Hz Rated voltage : 575 V Rated current : 7.01 A L. R. Amperes : 57.5 A LRC : 8.2x(Code J) No load current : 2.32 A Rated speed : 3485 rpm Slip : 3.19 % Rated torque : 11.3 ft.lb Locked rotor torque : 270 % Breakdown torque : 330 % Insulation class : F Service factor : 1.25 Moment of inertia (J) : 0.2242 sq.ft.lb Design : A	Locked rotor time : 30s (cold) 17s (hot) Temperature rise : 80 K Duty cycle : Cont.(S1) Ambient temperature : -20°C to +40°C Altitude : 1000 m.a.s.l. Protection degree : IP55 Cooling method : IC411 - TEFC Mounting : F-1 Rotation ¹ : Both (CW and CCW) Noise level ² : 66.0 dB(A) Starting method : Direct On Line Approx. weight ³ : 100 lb																		
Output	25% 50% 75% 100%																		
Efficiency (%)	88.2 88.5 89.5 89.5																		
Power Factor	0.51 0.75 0.84 0.88																		
Foundation loads																			
Max. traction : 188 lb																			
Max. compression : 288 lb																			
	<table border="0" style="width:100%;"> <tr> <td style="width: 50%;"></td> <td style="text-align: center;"><u>Drive end</u></td> <td style="text-align: center;"><u>Non drive end</u></td> </tr> <tr> <td>Bearing type :</td> <td style="text-align: center;">6307 ZZ</td> <td style="text-align: center;">6206 ZZ</td> </tr> <tr> <td>Sealing :</td> <td style="text-align: center;">V'Ring</td> <td style="text-align: center;">V'Ring</td> </tr> <tr> <td>Lubrication interval :</td> <td style="text-align: center;">-</td> <td style="text-align: center;">-</td> </tr> <tr> <td>Lubricant amount :</td> <td style="text-align: center;">-</td> <td style="text-align: center;">-</td> </tr> <tr> <td>Lubricant type :</td> <td colspan="2" style="text-align: center;">Mobil Polyrex EM</td> </tr> </table>		<u>Drive end</u>	<u>Non drive end</u>	Bearing type :	6307 ZZ	6206 ZZ	Sealing :	V'Ring	V'Ring	Lubrication interval :	-	-	Lubricant amount :	-	-	Lubricant type :	Mobil Polyrex EM	
	<u>Drive end</u>	<u>Non drive end</u>																	
Bearing type :	6307 ZZ	6206 ZZ																	
Sealing :	V'Ring	V'Ring																	
Lubrication interval :	-	-																	
Lubricant amount :	-	-																	
Lubricant type :	Mobil Polyrex EM																		
Notes																			
This revision replaces and cancel the previous one, which must be eliminated. (1) Looking the motor from the shaft end. (2) Measured at 1m and with tolerance of +3dB(A). (3) Approximate weight subject to changes after manufacturing process. (4) At 100% of full load.																			
These are average values based on tests with sinusoidal power supply, subject to the tolerances stipulated in NEMA MG-1.																			
Rev.	Changes Summary	Performed	Checked	Date															
Performed by																			
Checked by			Page	Revision															
Date	12/04/2022		1 / 6																

TORQUE AND CURRENT VS SPEED CURVE

Three Phase Induction Motor - Squirrel Cage



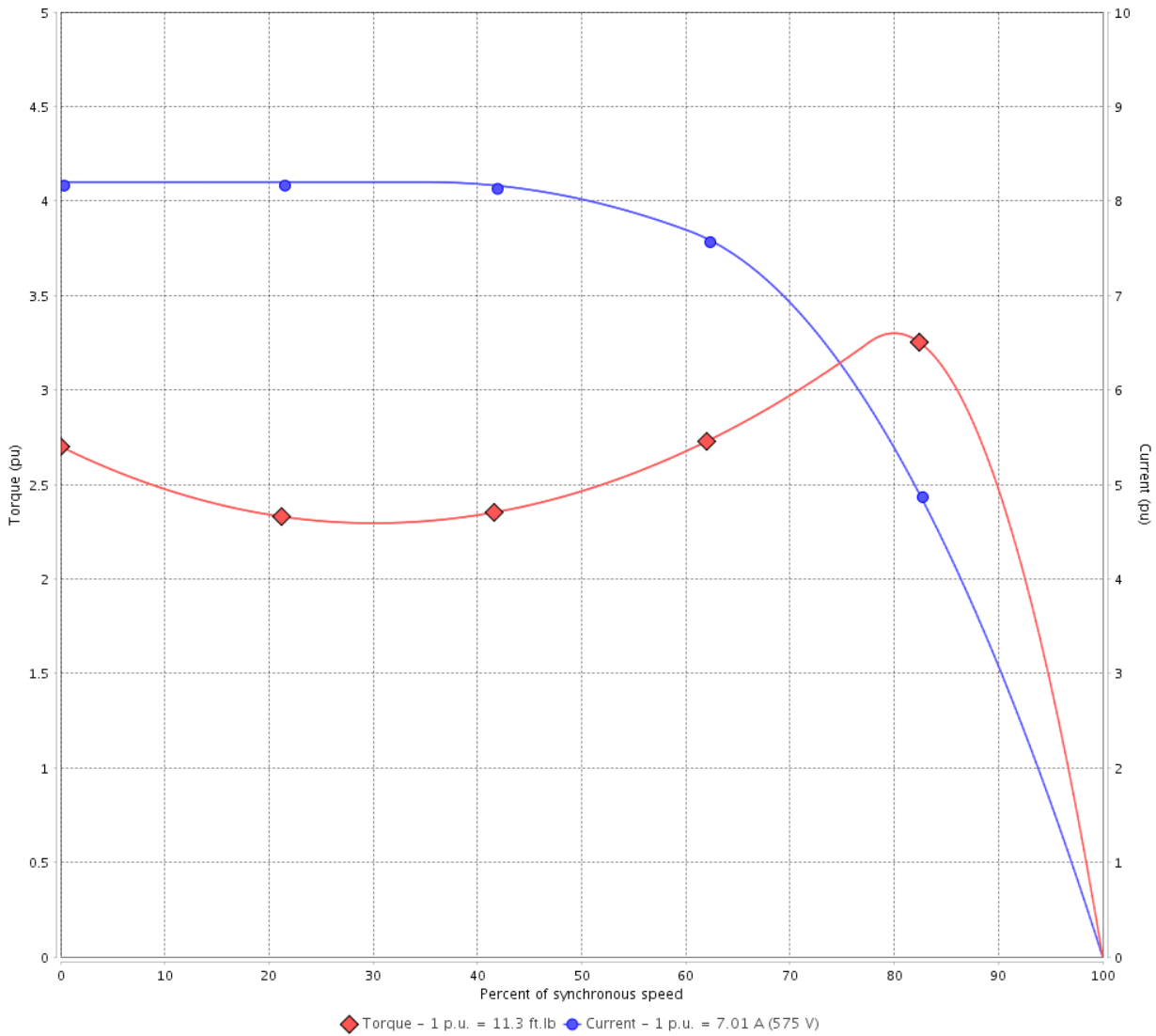
Customer :

Product line : NEMA Premium Efficiency Three-Phase

Product code : 12124579

Catalog # : 00736ET3H184JM-W22

TORQUE AND CURRENT VS SPEED CURVE



Performance : 575 V 60 Hz 2P

Rated current	: 7.01 A	Moment of inertia (J)	: 0.2242 sq.ft.lb
LRC	: 8.2	Duty cycle	: Cont.(S1)
Rated torque	: 11.3 ft.lb	Insulation class	: F
Locked rotor torque	: 270 %	Service factor	: 1.25
Breakdown torque	: 330 %	Temperature rise	: 80 K
Rated speed	: 3485 rpm	Design	: A

Locked rotor time : 30s (cold) 17s (hot)

Rev.	Changes Summary	Performed	Checked	Date
Performed by			Page 2 / 6	Revision
Checked by				
Date	12/04/2022			

LOAD PERFORMANCE CURVE

Three Phase Induction Motor - Squirrel Cage

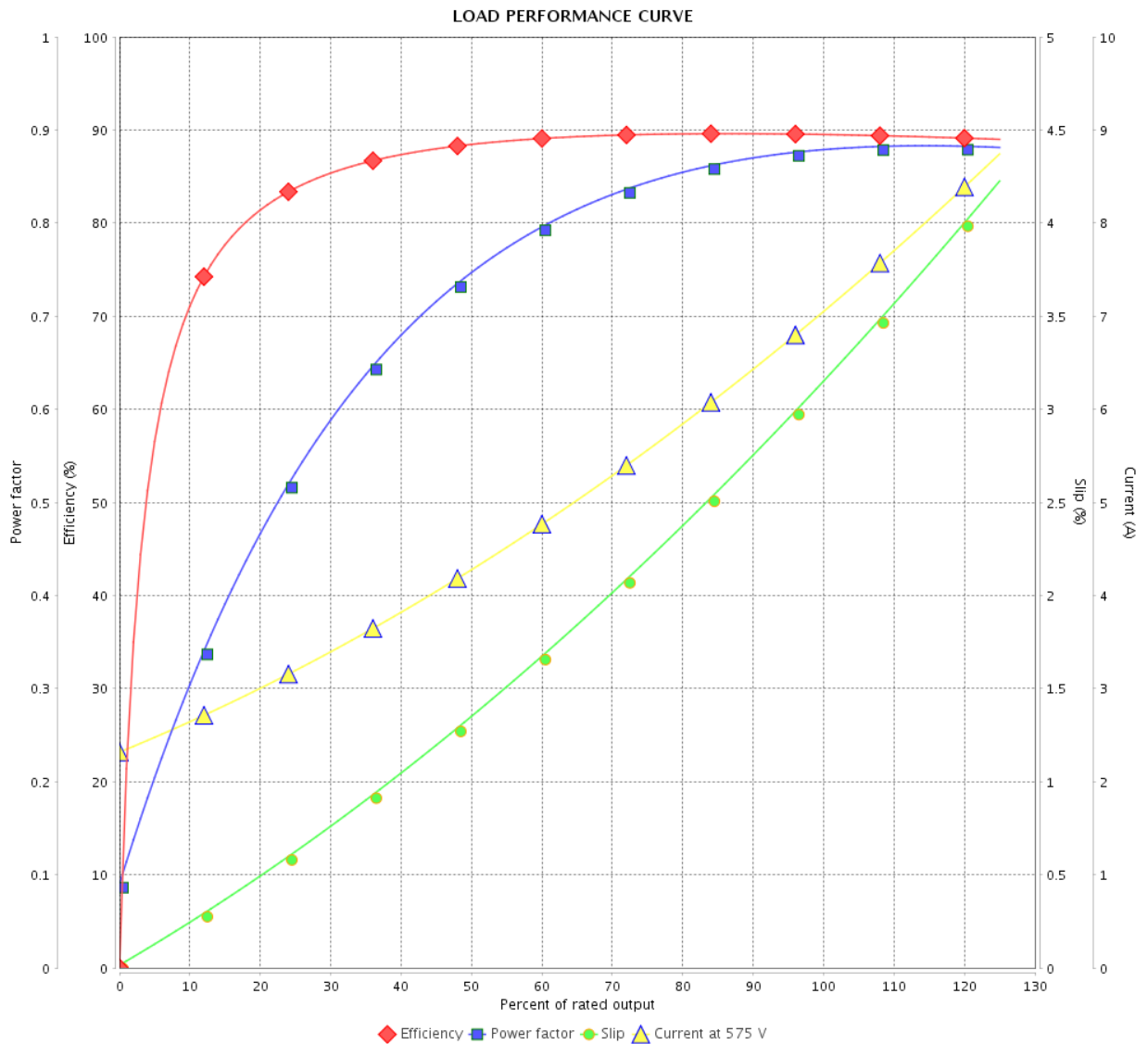


Customer : _____

Product line : NEMA Premium Efficiency Three-Phase

Product code : 12124579

Catalog # : 00736ET3H184JM-W22



Performance : 575 V 60 Hz 2P

Rated current : 7.01 A
 LRC : 8.2
 Rated torque : 11.3 ft.lb
 Locked rotor torque : 270 %
 Breakdown torque : 330 %
 Rated speed : 3485 rpm

Moment of inertia (J) : 0.2242 sq.ft.lb
 Duty cycle : Cont.(S1)
 Insulation class : F
 Service factor : 1.25
 Temperature rise : 80 K
 Design : A

Rev.	Changes Summary	Performed	Checked	Date
Performed by		Page		Revision
Checked by		3 / 6		
Date		12/04/2022		

THERMAL LIMIT CURVE



Three Phase Induction Motor - Squirrel Cage

Customer :

Product line : NEMA Premium Efficiency Three-Phase
 Product code : 12124579
 Catalog # : 00736ET3H184JM-W22

Performance : 575 V 60 Hz 2P

Rated current : 7.01 A	Moment of inertia (J) : 0.2242 sq.ft.lb
LRC : 8.2	Duty cycle : Cont.(S1)
Rated torque : 11.3 ft.lb	Insulation class : F
Locked rotor torque : 270 %	Service factor : 1.25
Breakdown torque : 330 %	Temperature rise : 80 K
Rated speed : 3485 rpm	Design : A

Heating constant

Cooling constant

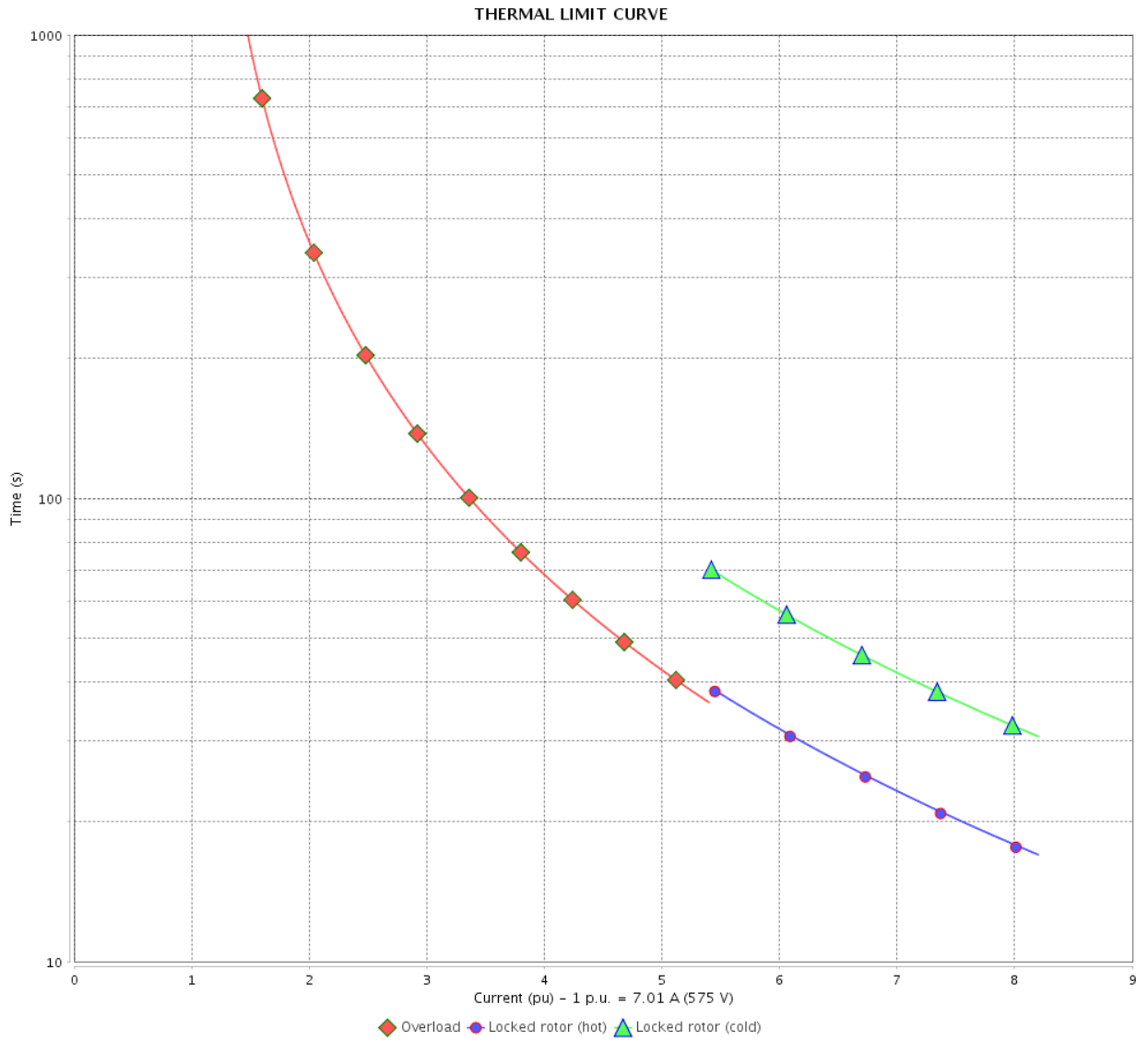
Rev.	Changes Summary	Performed	Checked	Date
Performed by			Page	Revision
Checked by				
Date	12/04/2022			

THERMAL LIMIT CURVE

Three Phase Induction Motor - Squirrel Cage



Customer : _____



Rev.	Changes Summary	Performed	Checked	Date
Performed by		Page 5 / 6		Revision
Checked by				
Date				

VFD OPERATION CURVE

Three Phase Induction Motor - Squirrel Cage



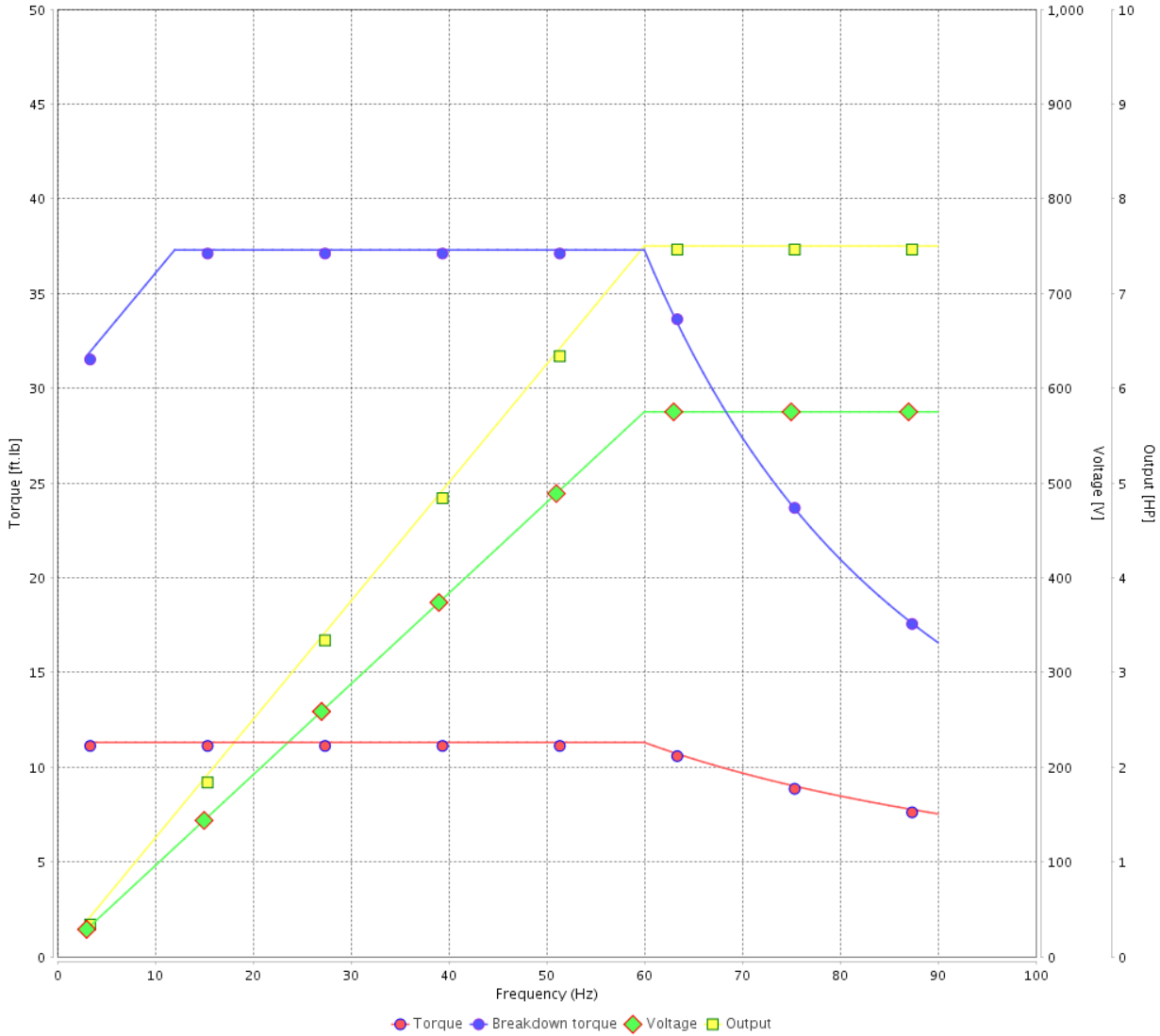
Customer : _____

Product line : NEMA Premium Efficiency Three-Phase

Product code : 12124579

Catalog # : 00736ET3H184JM-W22

VFD OPERATION CURVE



Performance : 575 V 60 Hz 2P

Rated current : 7.01 A
 LRC : 8.2
 Rated torque : 11.3 ft.lb
 Locked rotor torque : 270 %
 Breakdown torque : 330 %
 Rated speed : 3485 rpm

Moment of inertia (J) : 0.2242 sq.ft.lb
 Duty cycle : Cont.(S1)
 Insulation class : F
 Service factor : 1.25
 Temperature rise : 80 K
 Design : A

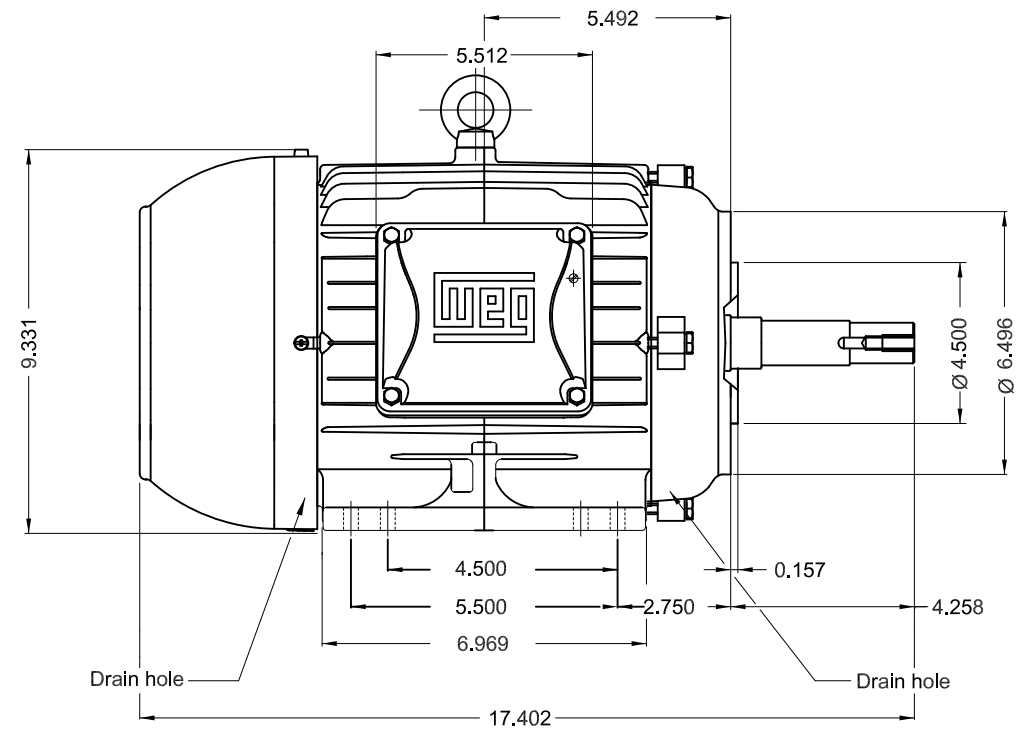
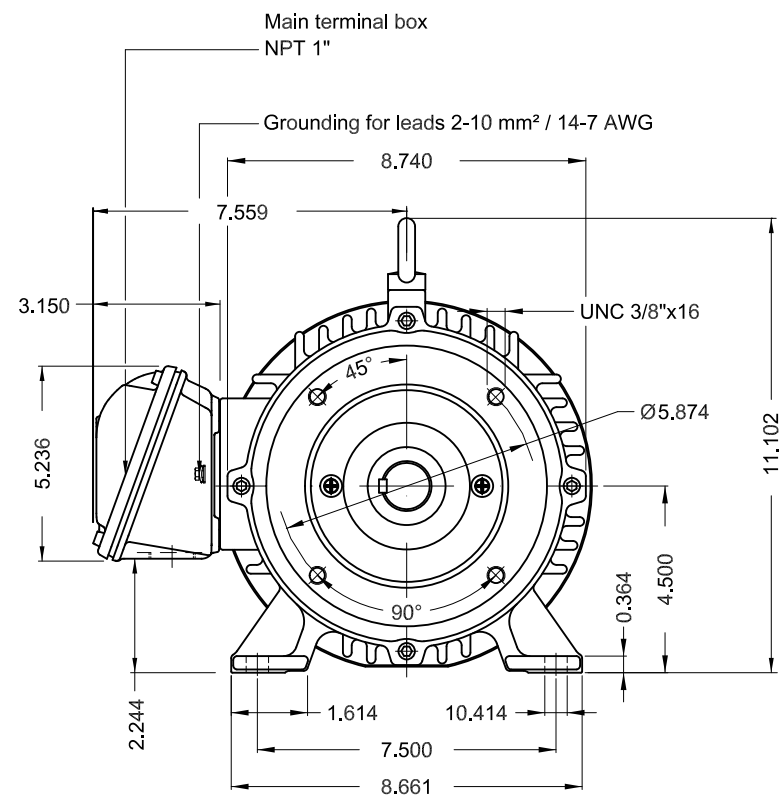
Rev.	Changes Summary	Performed	Checked	Date
Performed by		Page		Revision
Checked by		6 / 6		
Date		12/04/2022		

1 2 3 4 5 6

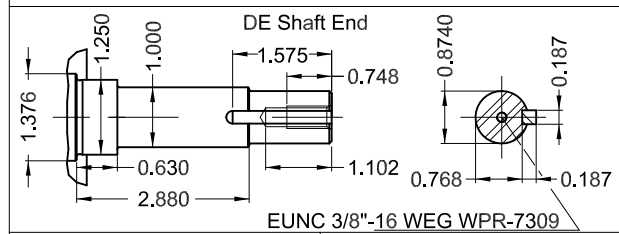
A

B

C



D



E

Color RAL 5009
 Painting plan 207A
 Mounting B34R(D)

7.5 HP 02 Poles 60 Hz

Dimensions in inches

ECM	LOC	SUMMARY OF MODIFICATIONS			EXECUTED	CHECKED	RELEASED	DATE	VER
EXECUTED	PIRWBUSER		THREE PH. MOTOR JM/JP/JET PUMP W22 PREM. EFF.			<p>PREVIEW</p> <p>WDD</p>		SHEET	1 / 1
CHECKED			FRAME 182/4JM IP55 TEFC						
RELEASED									
REL DT.			WMO	Jaragua do Sul	Product Engineering				

XME A3

**W22**

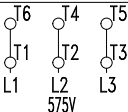
CC029A

® Inverter Duty Motor
Severe Duty

12124579

MADE IN BRAZIL MODEL 00736ET3H184JM-W22

PH 3	FR 182/4JM	HP(kW) 7.5(5.5)	Hz 60	SF 1.25	PF 0.88
V 575	A 7.01	RPM 3485	INS. CL.F Δ T 80 K		
NEMA NOM EFF 89.5 %				DES A DUTY CONT.	
ENCL TEFC				IP55 SFA 8.76	
					ALT 1000 m.a.s.l.
					CODE J



MOBIL POLYREX EM

99 Lbs

Class I, Div 2, Gr. A, B, C and D - T3

Class I, Zone 2, IIC - T3

Class II, Div 2, Gr. F and G - T5

For use on PWM, Gr. A, B, C, D, F and G

VT1000:1, CT20:1, 1.0SF, T4A

FOR SAFE AREA
MOD.TE1BFOXON