

DATA SHEET



Three Phase Induction Motor - Squirrel Cage

Customer :

Product line : NEMA Premium Efficiency Three-Phase
Product code : 12711992
Catalog # : 00736ET3H213JM-W22

Frame	: 213/5JM	Locked rotor time	: 39s (cold) 22s (hot)
Output	: 7.5 HP (5.5 kW)	Temperature rise	: 80 K
Poles	: 2	Duty cycle	: Cont.(S1)
Frequency	: 60 Hz	Ambient temperature	: -20°C to +40°C
Rated voltage	: 575 V	Altitude	: 1000 m.a.s.l.
Rated current	: 7.01 A	Protection degree	: IP55
L. R. Amperes	: 50.5 A	Cooling method	: IC411 - TEFC
LRC	: 7.2x(Code H)	Mounting	: F-1
No load current	: 2.16 A	Rotation ¹	: Both (CW and CCW)
Rated speed	: 3520 rpm	Noise level ²	: 68.0 dB(A)
Slip	: 2.22 %	Starting method	: Direct On Line
Rated torque	: 11.2 ft.lb	Approx. weight ³	: 152 lb
Locked rotor torque	: 210 %		
Breakdown torque	: 300 %		
Insulation class	: F		
Service factor	: 1.25		
Moment of inertia (J)	: 0.4665 sq.ft.lb		
Design	: B		

Output	50%	75%	100%	Foundation loads	
Efficiency (%)	87.5	89.5	89.5	Max. traction	: 113 lb
Power Factor	0.75	0.84	0.88	Max. compression	: 265 lb

	<u>Drive end</u>	<u>Non drive end</u>
Bearing type	: 6309 Z C3	: 6207 ZZ
Sealing	: V'Ring	: V'Ring
Lubrication interval	: 19000 h	: 40000 h
Lubricant amount	: 13 g	: 0 g
Lubricant type	: Mobil Polyrex EM	

Notes

This revision replaces and cancel the previous one, which must be eliminated.

- (1) Looking the motor from the shaft end.
- (2) Measured at 1m and with tolerance of +3dB(A).
- (3) Approximate weight subject to changes after manufacturing process.
- (4) At 100% of full load.

These are average values based on tests with sinusoidal power supply, subject to the tolerances stipulated in NEMA MG-1.

Rev.	Changes Summary	Performed	Checked	Date
Performed by				
Checked by			Page	Revision
Date	12/04/2022		1 / 6	

TORQUE AND CURRENT VS SPEED CURVE

Three Phase Induction Motor - Squirrel Cage



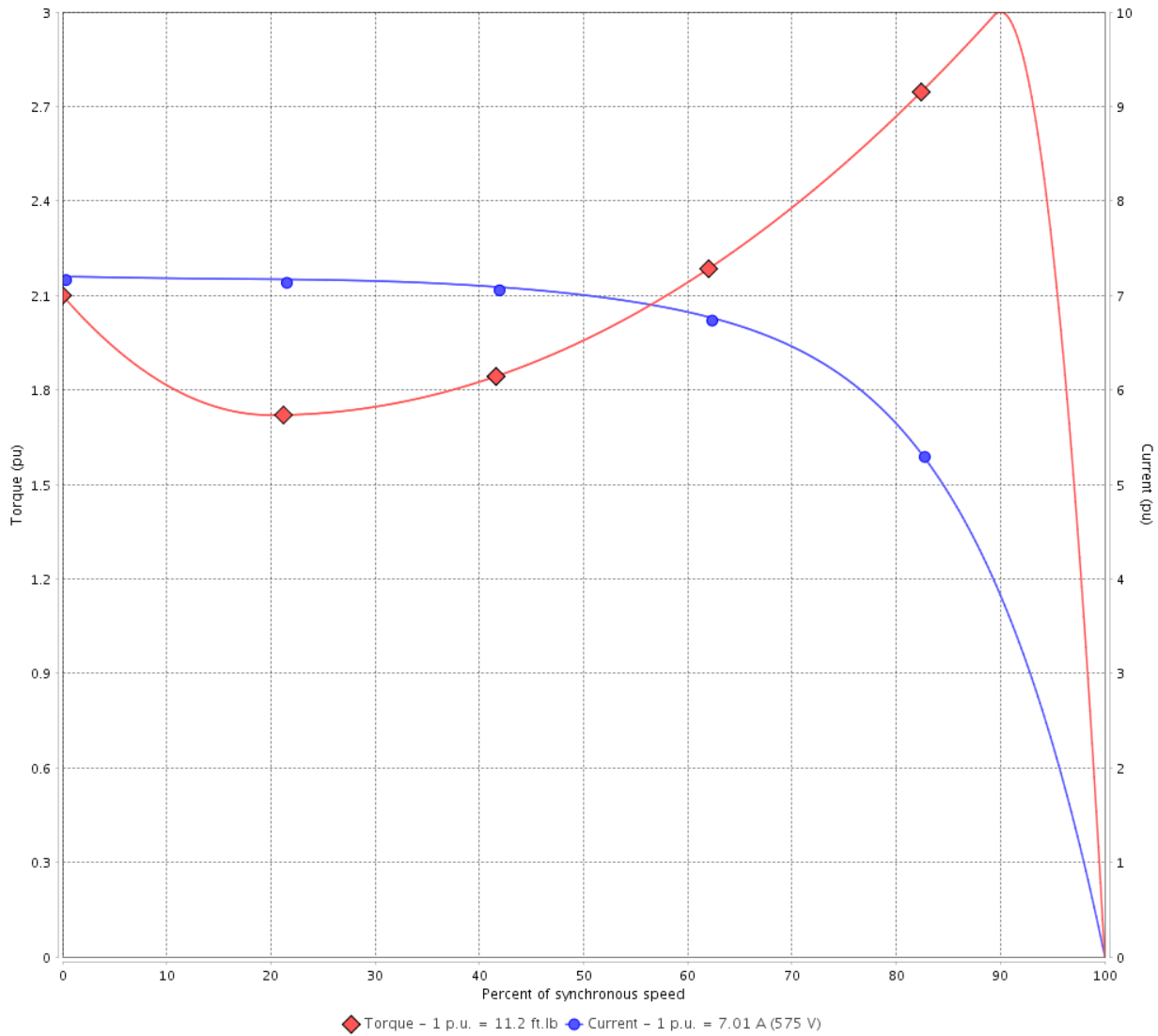
Customer :

Product line : NEMA Premium Efficiency Three-Phase

Product code : 12711992

Catalog # : 00736ET3H213JM-W22

TORQUE AND CURRENT VS SPEED CURVE



Performance : 575 V 60 Hz 2P

Rated current	: 7.01 A	Moment of inertia (J)	: 0.4665 sq.ft.lb
LRC	: 7.2	Duty cycle	: Cont.(S1)
Rated torque	: 11.2 ft.lb	Insulation class	: F
Locked rotor torque	: 210 %	Service factor	: 1.25
Breakdown torque	: 300 %	Temperature rise	: 80 K
Rated speed	: 3520 rpm	Design	: B

Locked rotor time : 39s (cold) 22s (hot)

Rev.	Changes Summary	Performed	Checked	Date
Performed by			Page 2 / 6	Revision
Checked by				
Date	12/04/2022			

LOAD PERFORMANCE CURVE

Three Phase Induction Motor - Squirrel Cage

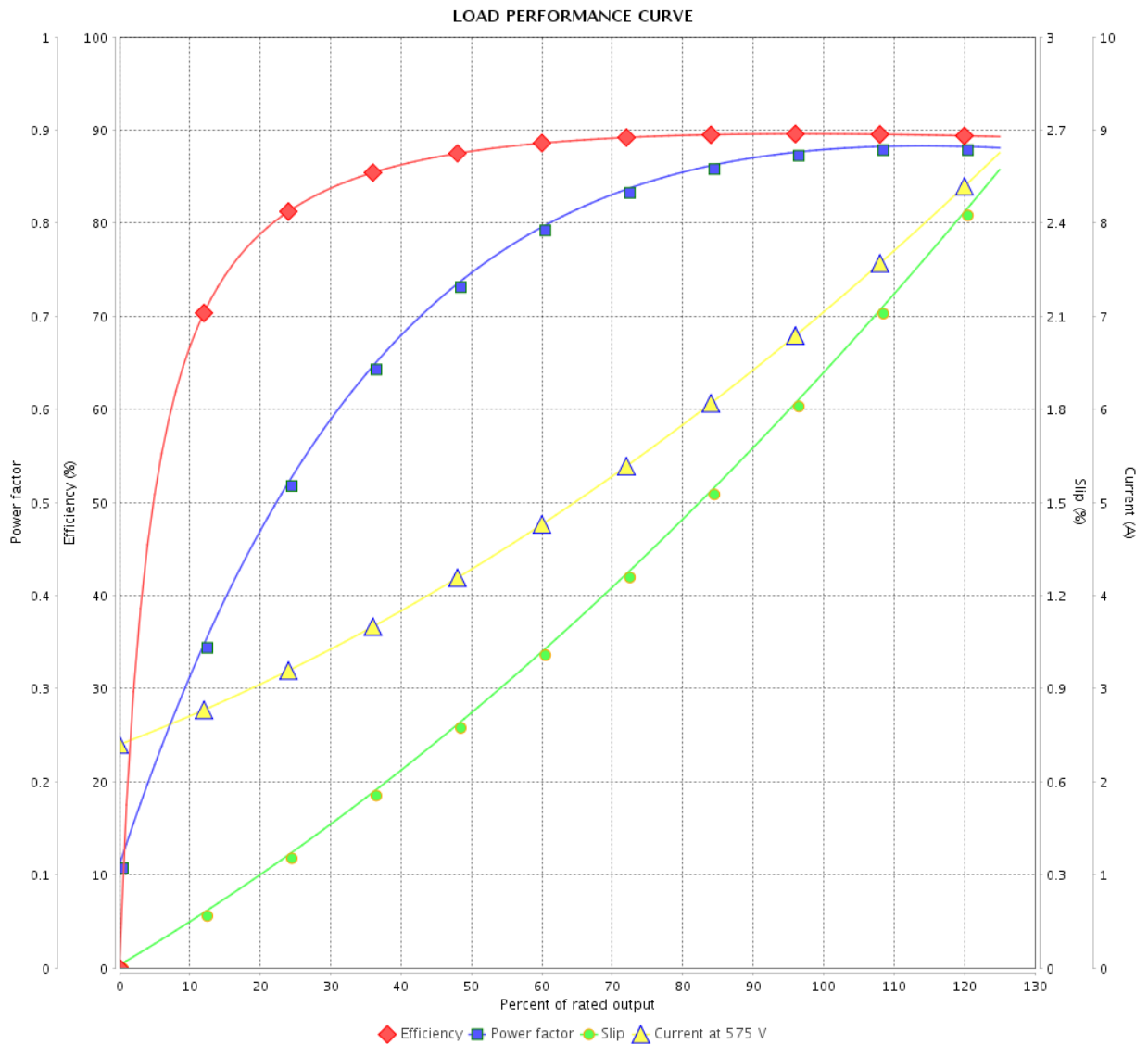


Customer : _____

Product line : NEMA Premium Efficiency Three-Phase

Product code : 12711992

Catalog # : 00736ET3H213JM-W22



Performance : 575 V 60 Hz 2P

Rated current : 7.01 A
 LRC : 7.2
 Rated torque : 11.2 ft.lb
 Locked rotor torque : 210 %
 Breakdown torque : 300 %
 Rated speed : 3520 rpm

Moment of inertia (J) : 0.4665 sq.ft.lb
 Duty cycle : Cont.(S1)
 Insulation class : F
 Service factor : 1.25
 Temperature rise : 80 K
 Design : B

Rev.	Changes Summary	Performed	Checked	Date
Performed by		Page		Revision
Checked by		3 / 6		
Date		12/04/2022		

THERMAL LIMIT CURVE



Three Phase Induction Motor - Squirrel Cage

Customer :

Product line : NEMA Premium Efficiency Three-Phase
Product code : 12711992
Catalog # : 00736ET3H213JM-W22

Performance : 575 V 60 Hz 2P

Rated current	: 7.01 A	Moment of inertia (J)	: 0.4665 sq.ft.lb
LRC	: 7.2	Duty cycle	: Cont.(S1)
Rated torque	: 11.2 ft.lb	Insulation class	: F
Locked rotor torque	: 210 %	Service factor	: 1.25
Breakdown torque	: 300 %	Temperature rise	: 80 K
Rated speed	: 3520 rpm	Design	: B

Heating constant

Cooling constant

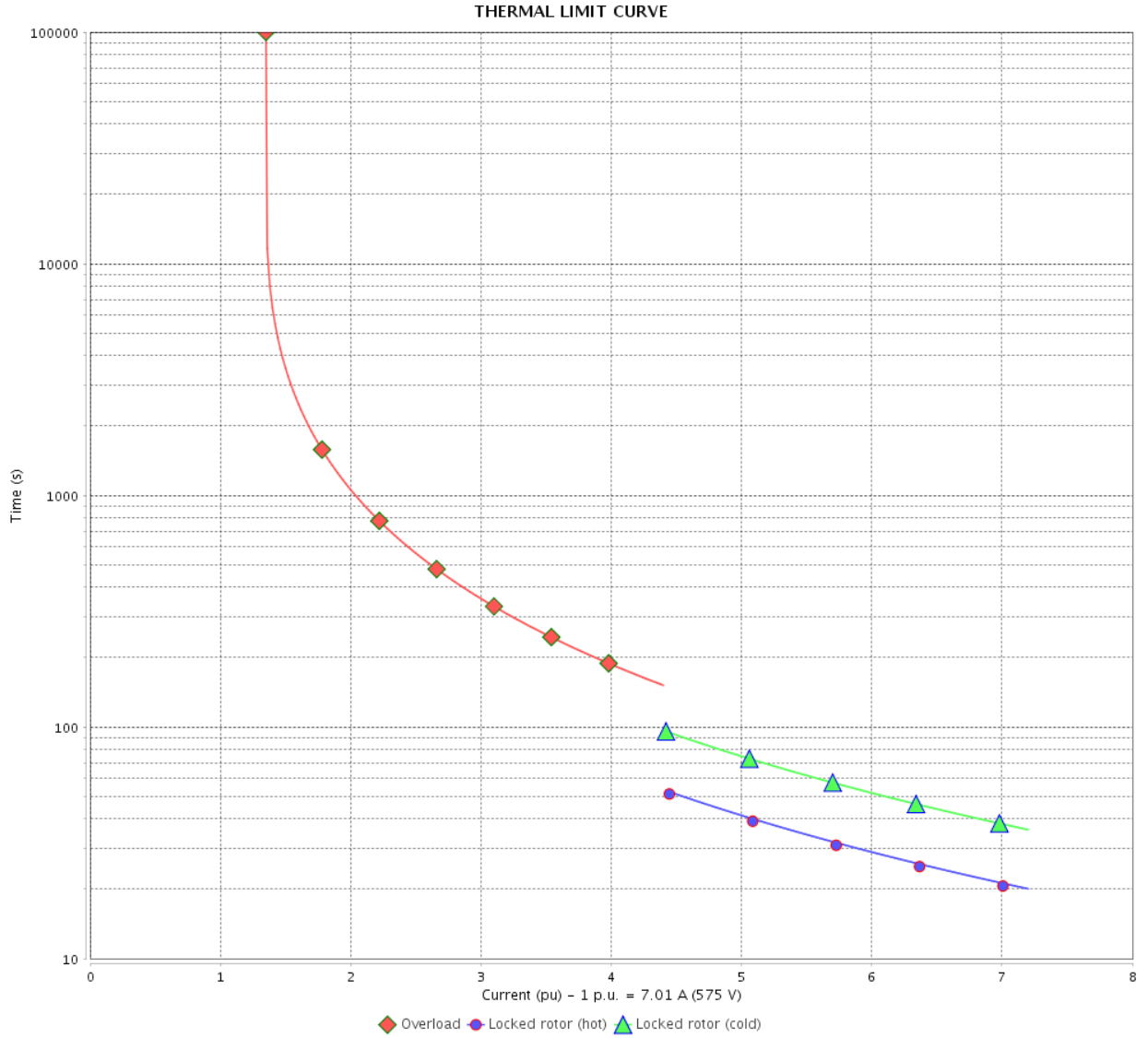
Rev.	Changes Summary	Performed	Checked	Date
Performed by				
Checked by			Page	Revision
Date	12/04/2022		4 / 6	

THERMAL LIMIT CURVE

Three Phase Induction Motor - Squirrel Cage



Customer : _____



Rev.	Changes Summary	Performed	Checked	Date
Performed by				
Checked by				
Date				
			Page 5 / 6	Revision

VFD OPERATION CURVE

Three Phase Induction Motor - Squirrel Cage



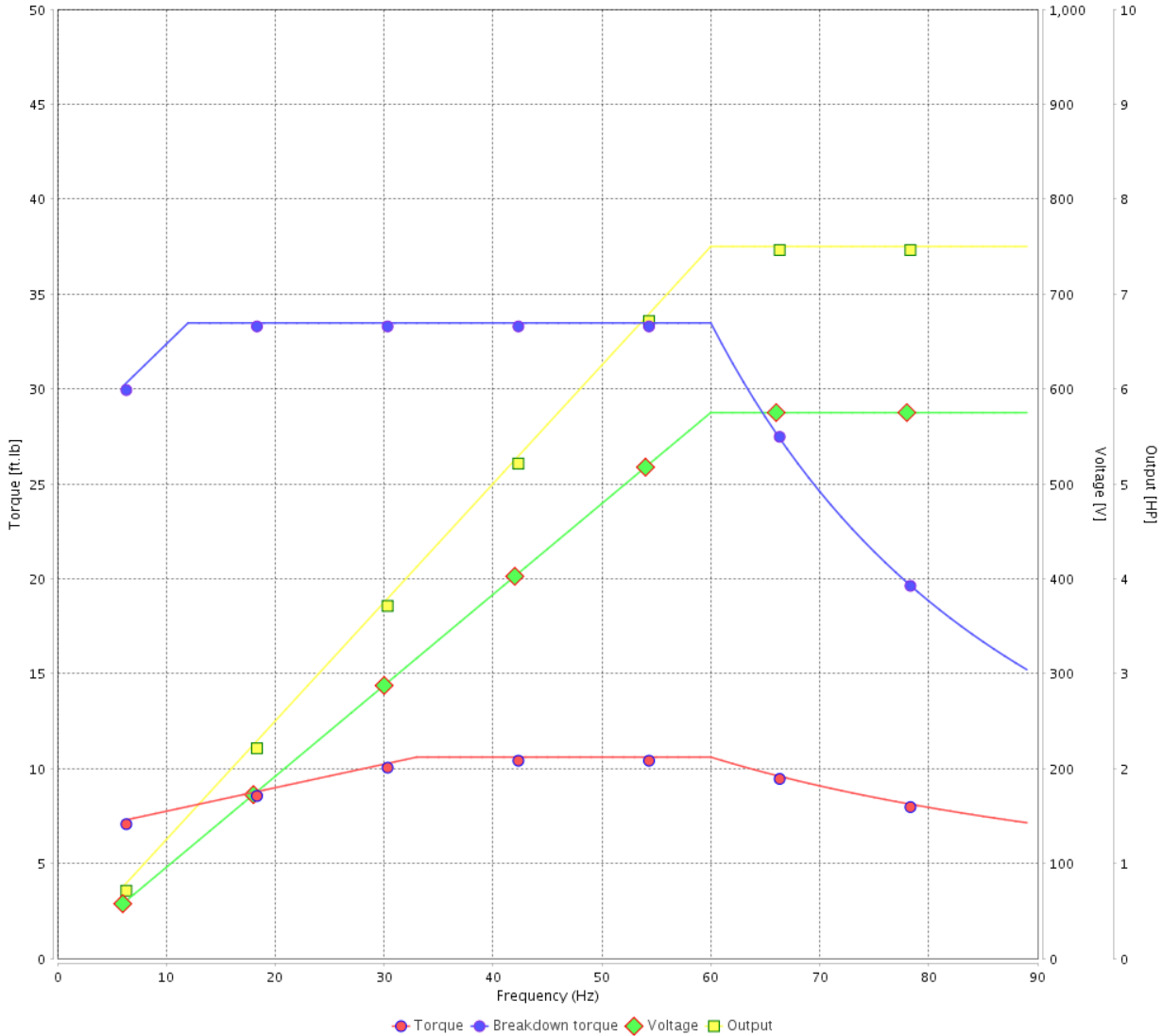
Customer :

Product line : NEMA Premium Efficiency Three-Phase

Product code : 12711992

Catalog # : 00736ET3H213JM-W22

VFD OPERATION CURVE

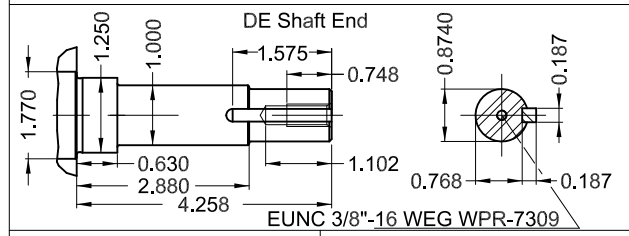
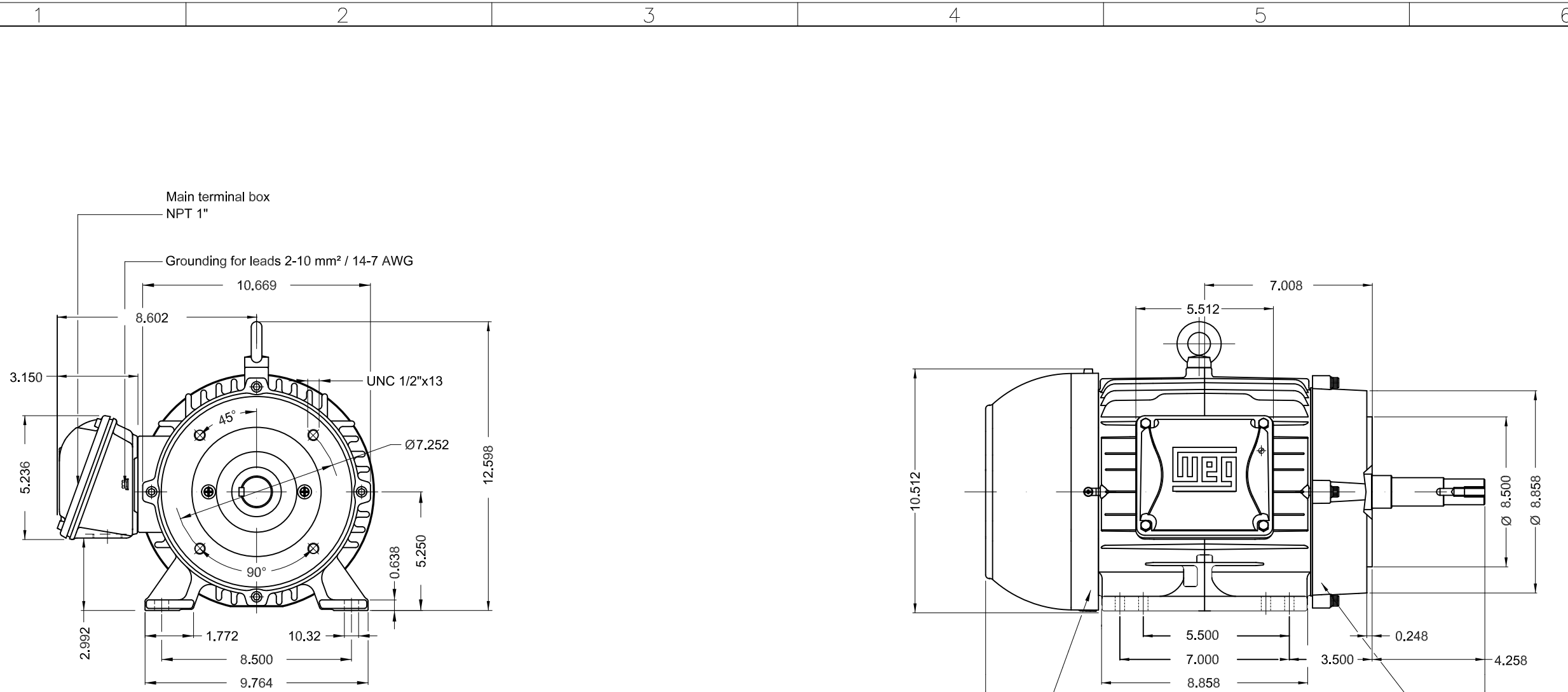


Performance : 575 V 60 Hz 2P

Rated current : 7.01 A
 LRC : 7.2
 Rated torque : 11.2 ft.lb
 Locked rotor torque : 210 %
 Breakdown torque : 300 %
 Rated speed : 3520 rpm

Moment of inertia (J) : 0.4665 sq.ft.lb
 Duty cycle : Cont.(S1)
 Insulation class : F
 Service factor : 1.25
 Temperature rise : 80 K
 Design : B

Rev.	Changes Summary	Performed	Checked	Date
Performed by			Page 6 / 6	Revision
Checked by				
Date	12/04/2022			



7.5 HP 02 Poles 60 Hz A

Color RAL 5009
 Painting plan 207A
 Mounting NEMA F-1
 Mounting B34R(D)

ECM	LOC	SUMMARY OF MODIFICATIONS	EXECUTED	CHECKED	RELEASED	DATE	VER
EXECUTED	PIRWBUSER	THREE PH. MOTOR JM/JP/JET PUMP W22 PREM. EFF. FRAME 213/5JM IP55 TEFC					
CHECKED							
RELEASED							
REL DT.	WMO		Jaragua do Sul	Product Engineering	SHEET	1 / 1	

PREVIEW
 WDD

**W22**

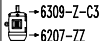
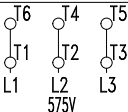
CC029A

® Inverter Duty Motor
Severe Duty

12711992

MADE IN BRAZIL MODEL 00736ET3H213JM-W22

PH 3	FR 213/5JM	HP(kW) 7.5(5.5)	Hz 60	SF 1.25	PF 0.88
V 575	A 7.01	RPM 3530	INS. CL.F Δ T 80 K		
NEMA NOM EFF 89.5 % DES B DUTY CONT.				AMB 40°C	
ENCL TEFC	IP55	SFA 8.76	ALT 1000 m.a.s.l.		
					CODE H



MOBIL POLYREX EM
13 g 19000 h

152 Lbs

Class I, Div 2, Gr. A, B, C and D - T3
Class I, Zone 2, IIC - T3
Class II, Div 2, Gr. F and G - T4
For use on PWM, Gr. A, B, C, D and F
VT 1000:1, CT 20:1, 1.0SF, T3A



FOR SAFE AREA
MOD.TE1BFOXON