

DATA SHEET



Three Phase Induction Motor - Squirrel Cage

| | | | | | | | | | | | | | | | | | | | |
|---|--|----------------------|------------------|----------------------|--------------|------------|----------|---------|------------|----------|----------------------|-----|---|------------------|-----|---|----------------|--------------------|--|
| Customer : | | | | | | | | | | | | | | | | | | | |
| Product line | : NEMA Premium Efficiency Three-Phase | | | | | | | | | | | | | | | | | | |
| Product code : | 14328455 | | | | | | | | | | | | | | | | | | |
| Catalog # : | 01018XT3H215TC | | | | | | | | | | | | | | | | | | |
| Frame : L215TC Output : 10 HP (7.5 kW) Poles : 4 Frequency : 60 Hz Rated voltage : 575 V Rated current : 10.2 A L. R. Amperes : 66.0 A LRC : 6.5x(Code H) No load current : 4.40 A Rated speed : 1765 rpm Slip : 1.94 % Rated torque : 29.8 ft.lb Locked rotor torque : 210 % Breakdown torque : 270 % Insulation class : F Service factor : 1.15 Moment of inertia (J) : 1.34 sq.ft.lb Design : B | Locked rotor time : 27s (cold) 15s (hot) Temperature rise : 80 K Duty cycle : Cont.(S1) Ambient temperature : -20°C to +40°C Altitude : 1000 m.a.s.l. Protection degree : IP55 Cooling method : IC411 - TEFC Mounting : F-1 Rotation ¹ : Both (CW and CCW) Noise level ² : 58.0 dB(A) Starting method : Direct On Line Approx. weight ³ : 234 lb | | | | | | | | | | | | | | | | | | |
| Output | 25% 50% 75% 100% | | | | | | | | | | | | | | | | | | |
| Efficiency (%) | 89.4 90.2 91.0 91.7 | | | | | | | | | | | | | | | | | | |
| Power Factor | 0.39 0.62 0.75 0.81 | | | | | | | | | | | | | | | | | | |
| Foundation loads | | | | | | | | | | | | | | | | | | | |
| Max. traction | : 336 lb | | | | | | | | | | | | | | | | | | |
| Max. compression | : 570 lb | | | | | | | | | | | | | | | | | | |
| | <table border="0"> <tr> <td></td> <td style="text-align: center;"><u>Drive end</u></td> <td style="text-align: center;"><u>Non drive end</u></td> </tr> <tr> <td>Bearing type</td> <td>: 6308 2RS</td> <td>6207 2RS</td> </tr> <tr> <td>Sealing</td> <td>: Oil Seal</td> <td>Lip Seal</td> </tr> <tr> <td>Lubrication interval</td> <td>: -</td> <td>-</td> </tr> <tr> <td>Lubricant amount</td> <td>: -</td> <td>-</td> </tr> <tr> <td>Lubricant type</td> <td colspan="2">: Mobil Polyrex EM</td> </tr> </table> | | <u>Drive end</u> | <u>Non drive end</u> | Bearing type | : 6308 2RS | 6207 2RS | Sealing | : Oil Seal | Lip Seal | Lubrication interval | : - | - | Lubricant amount | : - | - | Lubricant type | : Mobil Polyrex EM | |
| | <u>Drive end</u> | <u>Non drive end</u> | | | | | | | | | | | | | | | | | |
| Bearing type | : 6308 2RS | 6207 2RS | | | | | | | | | | | | | | | | | |
| Sealing | : Oil Seal | Lip Seal | | | | | | | | | | | | | | | | | |
| Lubrication interval | : - | - | | | | | | | | | | | | | | | | | |
| Lubricant amount | : - | - | | | | | | | | | | | | | | | | | |
| Lubricant type | : Mobil Polyrex EM | | | | | | | | | | | | | | | | | | |
| Notes | | | | | | | | | | | | | | | | | | | |
| This revision replaces and cancel the previous one, which must be eliminated. (1) Looking the motor from the shaft end. (2) Measured at 1m and with tolerance of +3dB(A). (3) Approximate weight subject to changes after manufacturing process. (4) At 100% of full load. | | | | | | | | | | | | | | | | | | | |
| These are average values based on tests with sinusoidal power supply, subject to the tolerances stipulated in NEMA MG-1. | | | | | | | | | | | | | | | | | | | |
| Rev. | Changes Summary | Performed | Checked | Date | | | | | | | | | | | | | | | |
| Performed by | | | | | | | | | | | | | | | | | | | |
| Checked by | | | Page | Revision | | | | | | | | | | | | | | | |
| Date | 12/04/2022 | | 1 / 7 | | | | | | | | | | | | | | | | |

DATA SHEET

Three Phase Induction Motor - Squirrel Cage



Customer : _____

Thermal protection

| ID | Application | Type | Quantity | Sensing Temperature |
|----|-------------|----------------------|-----------|---------------------|
| 1 | Winding | Thermostat - 2 wires | 1 x Phase | 155 °C |

| Rev. | Changes Summary | Performed | Checked | Date |
|--------------|-----------------|-----------|---------|----------|
| Performed by | | | | |
| Checked by | | | Page | Revision |
| Date | 12/04/2022 | | 2 / 7 | |

TORQUE AND CURRENT VS SPEED CURVE



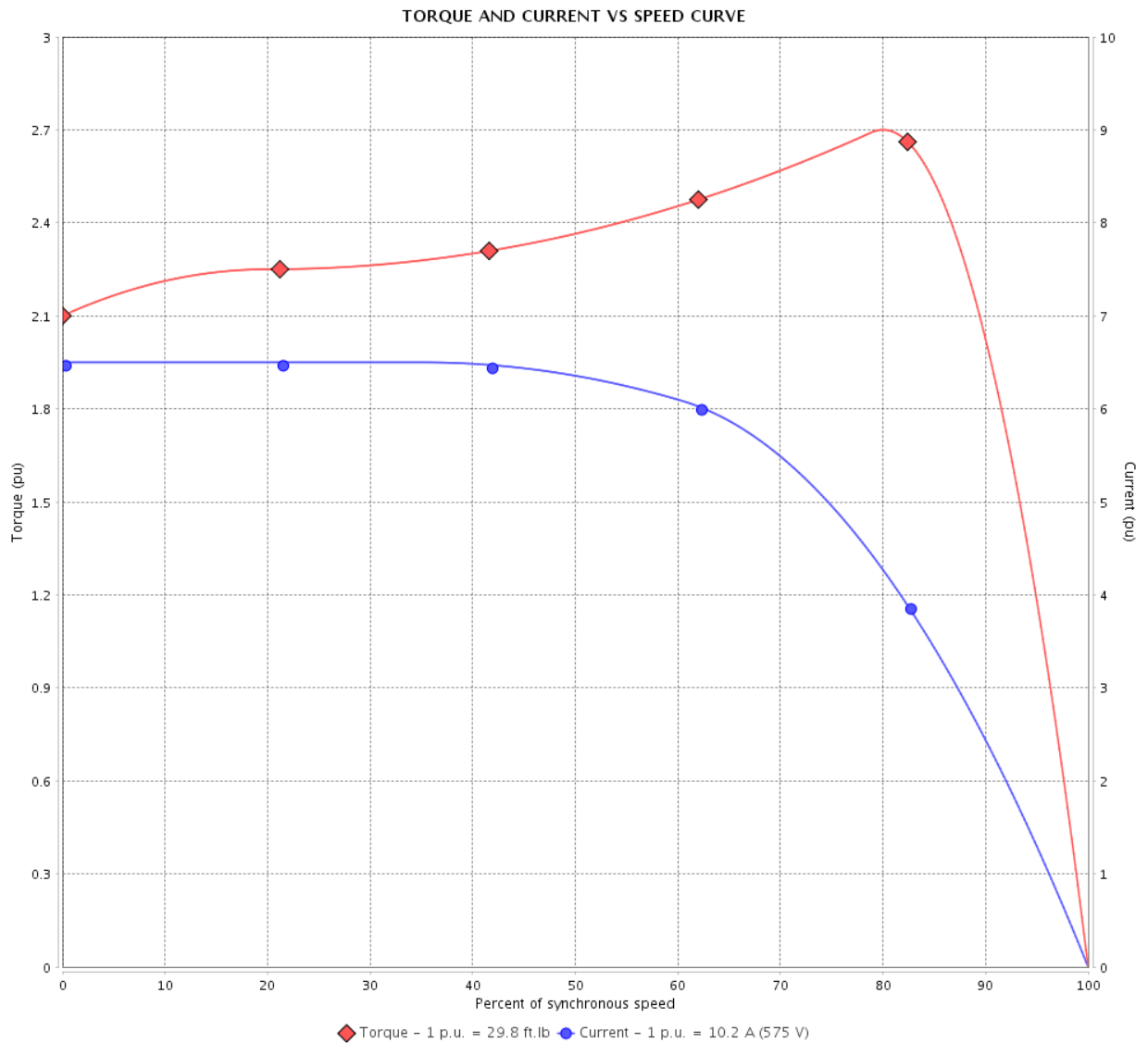
Three Phase Induction Motor - Squirrel Cage

Customer :

Product line : NEMA Premium Efficiency Three-Phase

Product code : 14328455

Catalog # : 01018XT3H215TC



Performance : 575 V 60 Hz 4P

| | | | |
|---------------------|--------------|-----------------------|-----------------|
| Rated current | : 10.2 A | Moment of inertia (J) | : 1.34 sq.ft.lb |
| LRC | : 6.5 | Duty cycle | : Cont.(S1) |
| Rated torque | : 29.8 ft.lb | Insulation class | : F |
| Locked rotor torque | : 210 % | Service factor | : 1.15 |
| Breakdown torque | : 270 % | Temperature rise | : 80 K |
| Rated speed | : 1765 rpm | Design | : B |

Locked rotor time : 27s (cold) 15s (hot)

| Rev. | Changes Summary | Performed | Checked | Date |
|--------------|-----------------|-----------|---------------|----------|
| | | | | |
| Performed by | | | Page 3 / 7 | Revision |
| Checked by | | | | |
| Date | 12/04/2022 | | | |

LOAD PERFORMANCE CURVE

Three Phase Induction Motor - Squirrel Cage



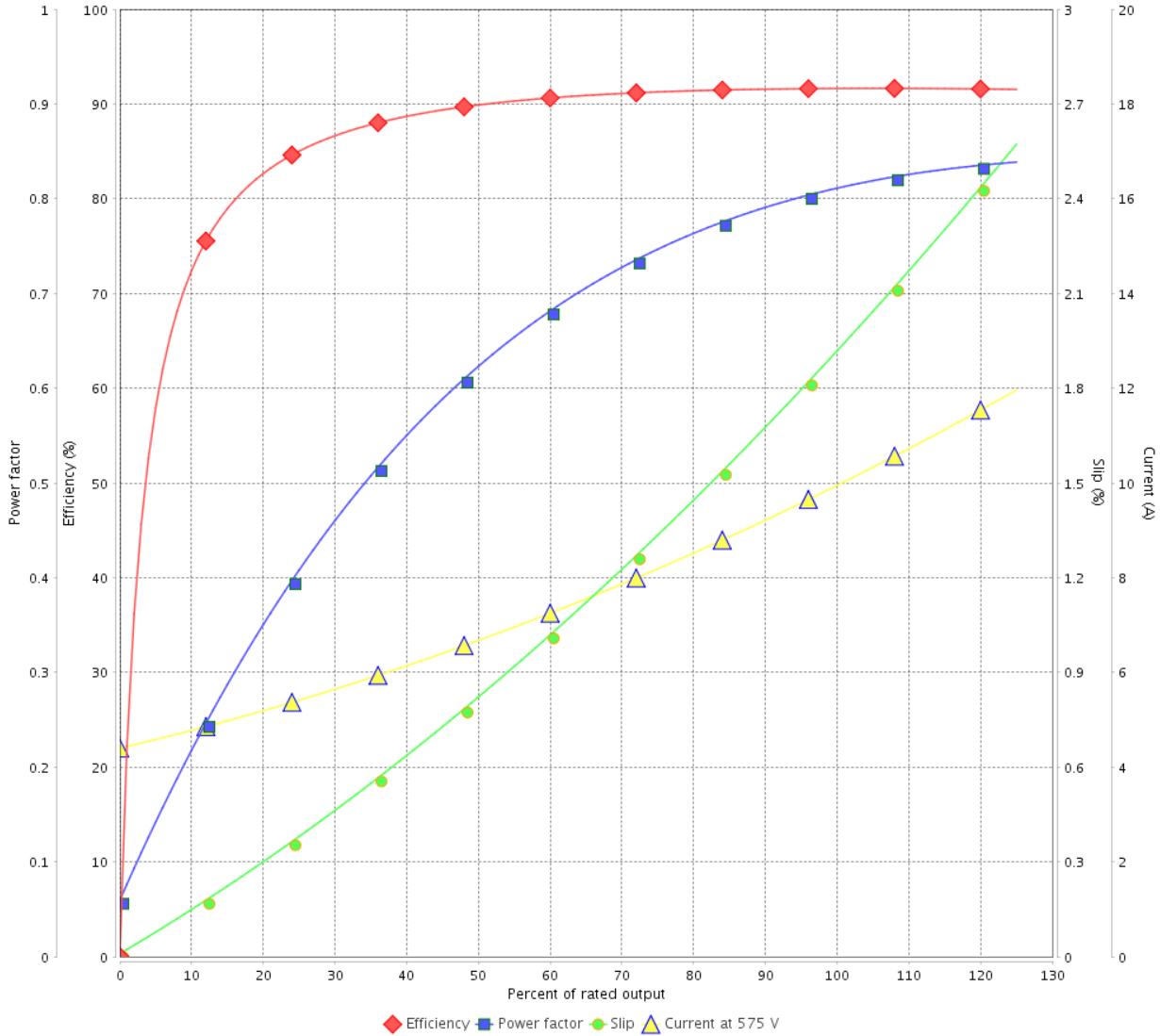
Customer :

Product line : NEMA Premium Efficiency Three-Phase

Product code : 14328455

Catalog # : 01018XT3H215TC

LOAD PERFORMANCE CURVE



Performance : 575 V 60 Hz 4P

Rated current : 10.2 A
 LRC : 6.5
 Rated torque : 29.8 ft.lb
 Locked rotor torque : 210 %
 Breakdown torque : 270 %
 Rated speed : 1765 rpm

Moment of inertia (J) : 1.34 sq.ft.lb
 Duty cycle : Cont.(S1)
 Insulation class : F
 Service factor : 1.15
 Temperature rise : 80 K
 Design : B

| Rev. | Changes Summary | Performed | Checked | Date |
|--------------|-----------------|-----------|---------------|----------|
| | | | | |
| Performed by | | | Page 4 / 7 | Revision |
| Checked by | | | | |
| Date | 12/04/2022 | | | |

THERMAL LIMIT CURVE



Three Phase Induction Motor - Squirrel Cage

Customer :

Product line : NEMA Premium Efficiency Three-Phase

Product code : 14328455

Catalog # : 01018XT3H215TC

Performance : 575 V 60 Hz 4P

Rated current : 10.2 A
 LRC : 6.5
 Rated torque : 29.8 ft.lb
 Locked rotor torque : 210 %
 Breakdown torque : 270 %
 Rated speed : 1765 rpm

Moment of inertia (J) : 1.34 sq.ft.lb
 Duty cycle : Cont.(S1)
 Insulation class : F
 Service factor : 1.15
 Temperature rise : 80 K
 Design : B

Heating constant

Cooling constant

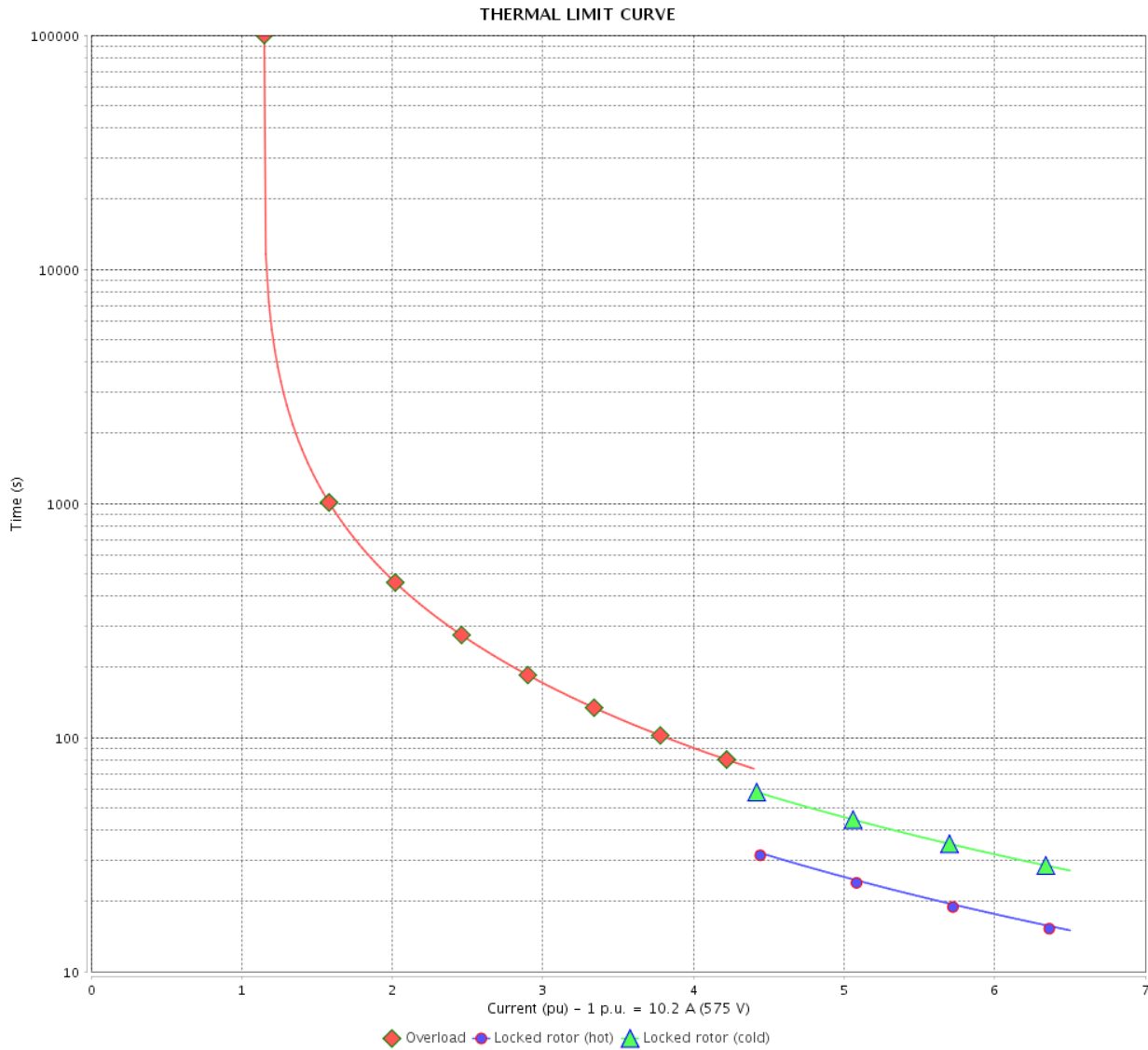
| Rev. | Changes Summary | Performed | Checked | Date |
|--------------|-----------------|-----------|---------|----------|
| | | | | |
| Performed by | | | | |
| Checked by | | | Page | Revision |
| Date | 12/04/2022 | | 5 / 7 | |

THERMAL LIMIT CURVE

Three Phase Induction Motor - Squirrel Cage



Customer : _____



| Rev. | Changes Summary | Performed | Checked | Date |
|--------------|-----------------|------------|---------|----------|
| | | | | |
| Performed by | | Page | | Revision |
| Checked by | | 6 / 7 | | |
| Date | | 12/04/2022 | | |

VFD OPERATION CURVE

Three Phase Induction Motor - Squirrel Cage

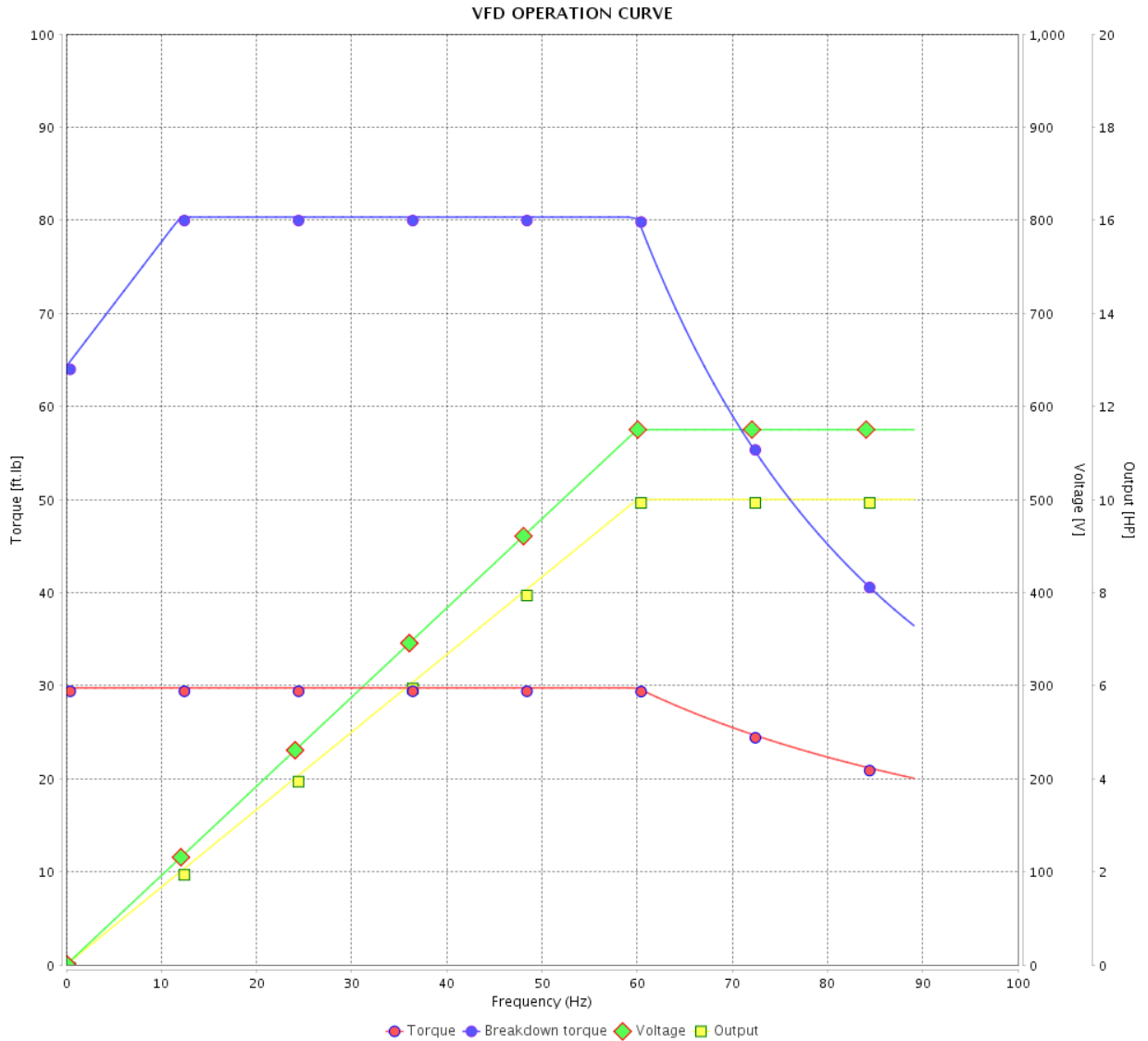


Customer :

Product line : NEMA Premium Efficiency Three-Phase

Product code : 14328455

Catalog # : 01018XT3H215TC

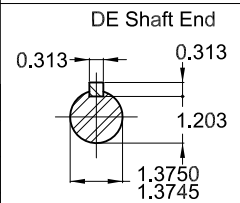
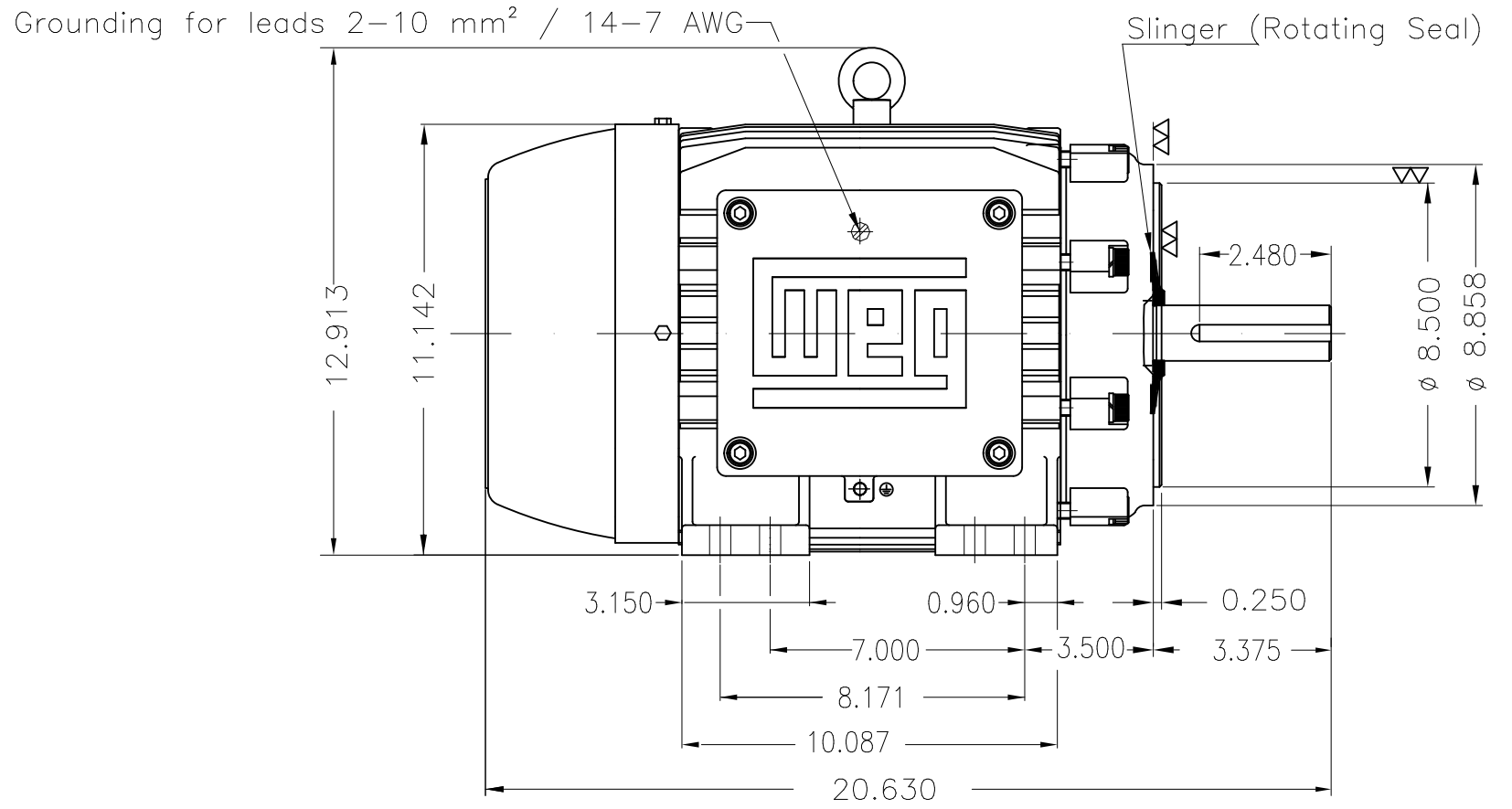
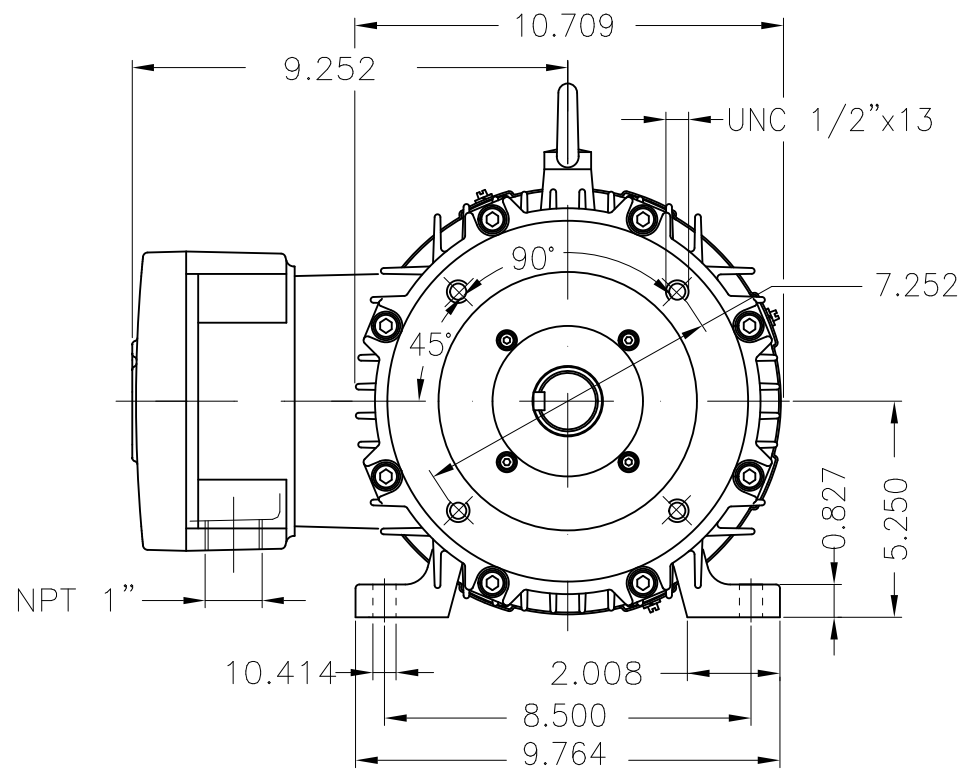


Performance : 575 V 60 Hz 4P

Rated current : 10.2 A
 LRC : 6.5
 Rated torque : 29.8 ft.lb
 Locked rotor torque : 210 %
 Breakdown torque : 270 %
 Rated speed : 1765 rpm

Moment of inertia (J) : 1.34 sq.ft.lb
 Duty cycle : Cont.(S1)
 Insulation class : F
 Service factor : 1.15
 Temperature rise : 80 K
 Design : B

| Rev. | Changes Summary | Performed | Checked | Date |
|--------------|-----------------|-----------|---------|---------------|
| | | | | |
| Performed by | | | | Page 7 / 7 |
| Checked by | | | | |
| Date | 12/04/2022 | | | |



Color RAL 5009
 Painting plan 202P
 Mounting NEMA F-1
 Mounting B34R(D)

10 HP 04 Poles 60 Hz A

| ECM | LOC | SUMMARY OF MODIFICATIONS | EXECUTED | CHECKED | RELEASED | DATE | VER |
|----------|-----------|--|---------------------|---------|----------|------|-----|
| EXECUTED | PIRWBUSER | THREE PH. MOTOR EXPLOSION PROOF PREM. EFF. | | | | | |
| CHECKED | | FRAME L215TC IP55 TEFC | | | | | |
| RELEASED | | | | | | | |
| REL DT. | WMO | Jaragua do Sul | Product Engineering | SHEET | 1 / 1 | | |

PREVIEW
 WDD



MADE IN BRAZIL

**W21X NEMA**
Premium

14328455



LISTED

CC029A

Inverter Duty Motor
Severe Duty

MODEL 01018XT3H215TC

PH 3 | FR L215TC

HP(kW) 10(7.5)

HZ 60

IP55

V 575

A 10.2

RPM 1765

NEMA NOM EFF 91.7%

PF 0.81

SFA 11.7

DES B

INS CL F Δ T 80 K | SF 1.15

ENCL TEFC

DUTY CONT.

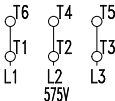
CODE H

ALT 1000

m.a.s.l.

AMB 40°C

AMB 55°C SF1.0

→ 6308-2RS MOBIL POLYREX EM
→ 6207-2RS

236 Lbs

TEMP CODE T3C
CSA/UL: Class I - Div. 1 - Groups C and D
CSA: Class II - Div. 1 - Groups F and G
CSA: Class I - Zone 1 - IIB

EXPLOSION PROOF MOTOR

FOR USE ON VPWM VFD 1000:1VT, 20:1CT, 1.0SF, T3C, AMB 40°C.