

DATA SHEET



Three Phase Induction Motor - Squirrel Cage

Customer :				
Product line	: NEMA Premium Efficiency Three-Phase			
Product code :	13207633			
Catalog # :	01036ET3E215T-SRT			
Frame : 213/5T Output : 10 HP (7.5 kW) Poles : 2 Frequency : 60 Hz Rated voltage : 208-230/460 V Rated current : 25.9-23.5/11.7 A L. R. Amperes : 181-165/81.9 A LRC : 7.0x(Code H) No load current : 0.000-8.20/4.10 A Rated speed : 3510 rpm Slip : 2.50 % Rated torque : 15.0 ft.lb Locked rotor torque : 229 % Breakdown torque : 305 % Insulation class : F Service factor : 1.15 Design : B	Locked rotor time : 27s (cold) 15s (hot) Temperature rise : 80 K Duty cycle : Cont.(S1) Ambient temperature : -20°C to +40°C Altitude : 1000 m.a.s.l. Protection degree : IP55 Cooling method : IC411 - TEFC Mounting : F-1 Rotation ¹ : Both (CW and CCW) Noise level ² : 70.0 dB(A) Starting method : Direct On Line Approx. weight ³ : 122 lb			
Output	25% 50% 75% 100%			
Efficiency (%)	0.000 88.1 89.6 90.2			
Power Factor	0.00 0.77 0.85 0.89			
Foundation loads				
Max. traction	: 196 lb			
Max. compression	: 318 lb			
Bearing type	: <u>Drive end</u> 6208 ZZ <u>Non drive end</u> 6206 ZZ			
Sealing	: V'Ring Without Bearing Seal			
Lubrication interval	: 0 h 0 h			
Lubricant amount	: 0 g 0 g			
Lubricant type	: Mobil Polyrex EM			
Notes				
This revision replaces and cancel the previous one, which must be eliminated.				
(1) Looking the motor from the shaft end.				
(2) Measured at 1m and with tolerance of +3dB(A).				
(3) Approximate weight subject to changes after manufacturing process.				
(4) At 100% of full load.				
These are average values based on tests with sinusoidal power supply, subject to the tolerances stipulated in NEMA MG-1.				
Rev.	Changes Summary	Performed	Checked	Date
Performed by				
Checked by			Page	Revision
Date	12/04/2022		1 / 6	

TORQUE AND CURRENT VS SPEED CURVE

Three Phase Induction Motor - Squirrel Cage



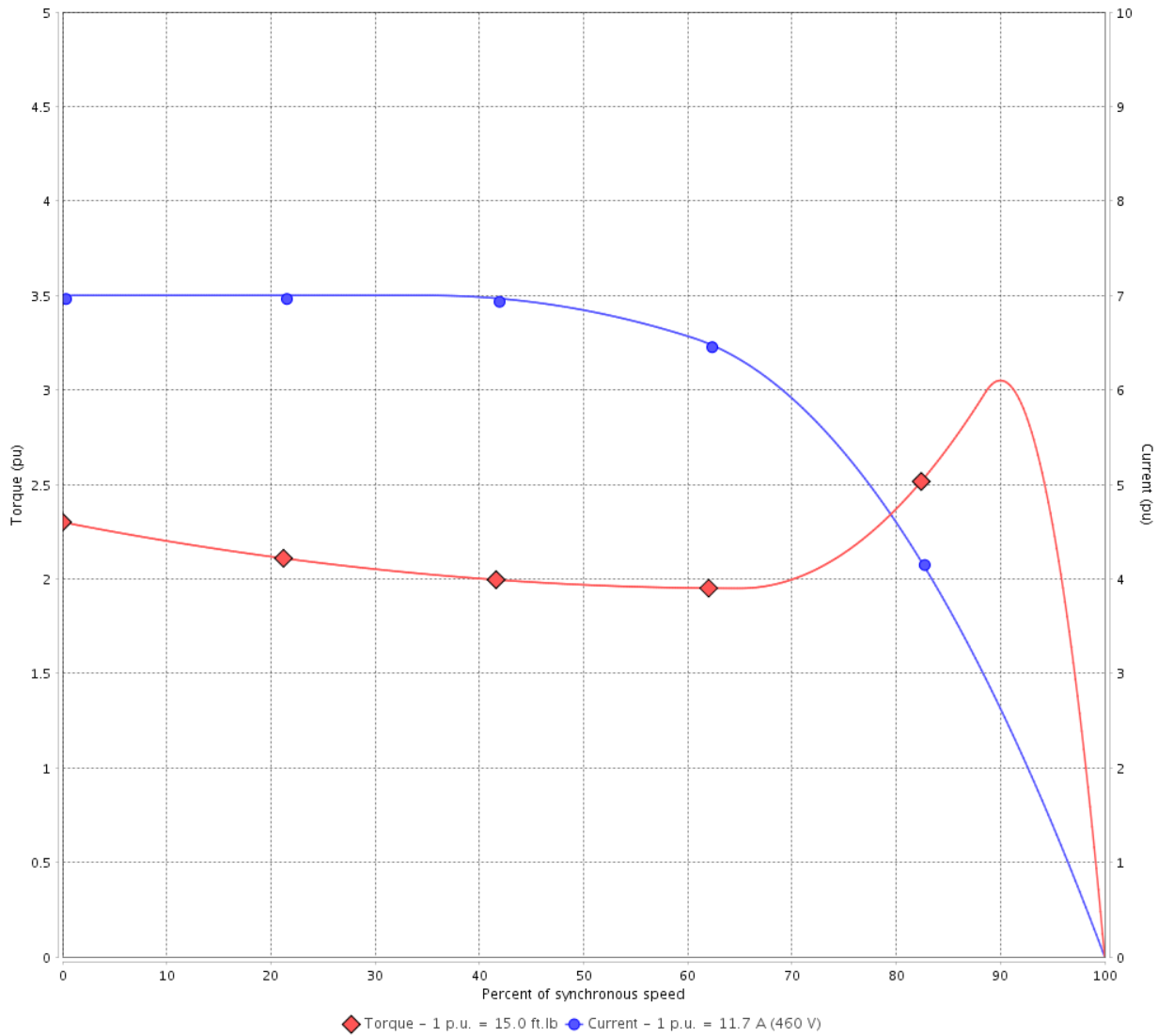
Customer :

Product line : NEMA Premium Efficiency Three-Phase

Product code : 13207633

Catalog # : 01036ET3E215T-SRT

TORQUE AND CURRENT VS SPEED CURVE



Performance : 208-230/460 V 60 Hz 2P

Rated current	: 25.9-23.5/11.7 A	Moment of inertia (J)	
LRC	: 7.0	Duty cycle	: Cont.(S1)
Rated torque	: 15.0 ft.lb	Insulation class	: F
Locked rotor torque	: 229 %	Service factor	: 1.15
Breakdown torque	: 305 %	Temperature rise	: 80 K
Rated speed	: 3510 rpm	Design	: B

Locked rotor time : 27s (cold) 15s (hot)

Rev.	Changes Summary	Performed	Checked	Date
Performed by			Page 2 / 6	Revision
Checked by				
Date	12/04/2022			

LOAD PERFORMANCE CURVE

Three Phase Induction Motor - Squirrel Cage

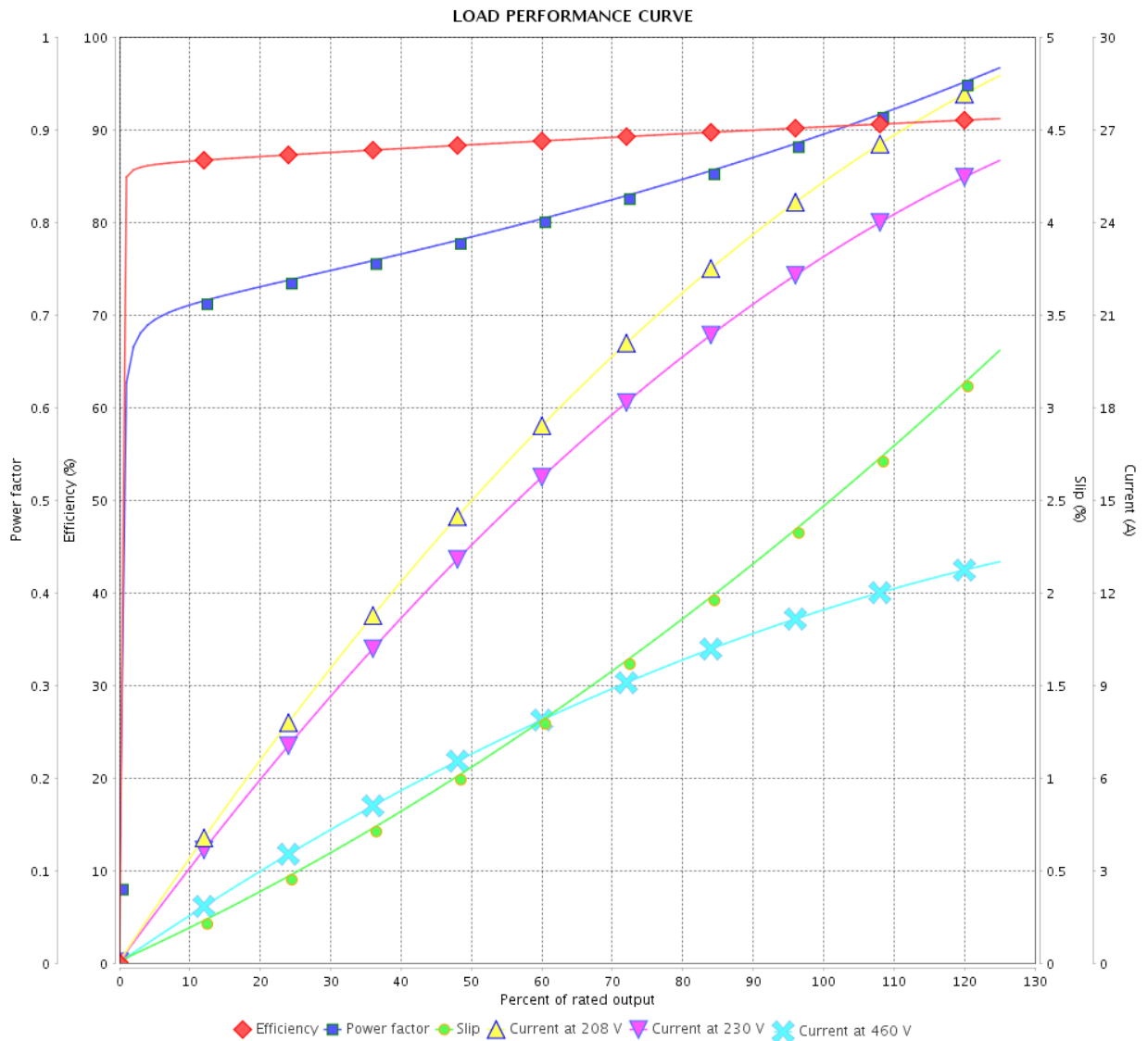


Customer :

Product line : NEMA Premium Efficiency Three-Phase

Product code : 13207633

Catalog # : 01036ET3E215T-SRT



Performance : 208-230/460 V 60 Hz 2P

Rated current : 25.9-23.5/11.7 A
 LRC : 7.0
 Rated torque : 15.0 ft.lb
 Locked rotor torque : 229 %
 Breakdown torque : 305 %
 Rated speed : 3510 rpm

Moment of inertia (J)
 Duty cycle : Cont.(S1)
 Insulation class : F
 Service factor : 1.15
 Temperature rise : 80 K
 Design : B

Rev.	Changes Summary	Performed	Checked	Date
Performed by			Page	Revision
Checked by			3 / 6	
Date	12/04/2022			

THERMAL LIMIT CURVE

Three Phase Induction Motor - Squirrel Cage



Customer :

Product line : NEMA Premium Efficiency Three-Phase
Product code : 13207633
Catalog # : 01036ET3E215T-SRT

Performance : 208-230/460 V 60 Hz 2P

Rated current	: 25.9-23.5/11.7 A	Moment of inertia (J)	
LRC	: 7.0	Duty cycle	: Cont.(S1)
Rated torque	: 15.0 ft.lb	Insulation class	: F
Locked rotor torque	: 229 %	Service factor	: 1.15
Breakdown torque	: 305 %	Temperature rise	: 80 K
Rated speed	: 3510 rpm	Design	: B

Heating constant

Cooling constant

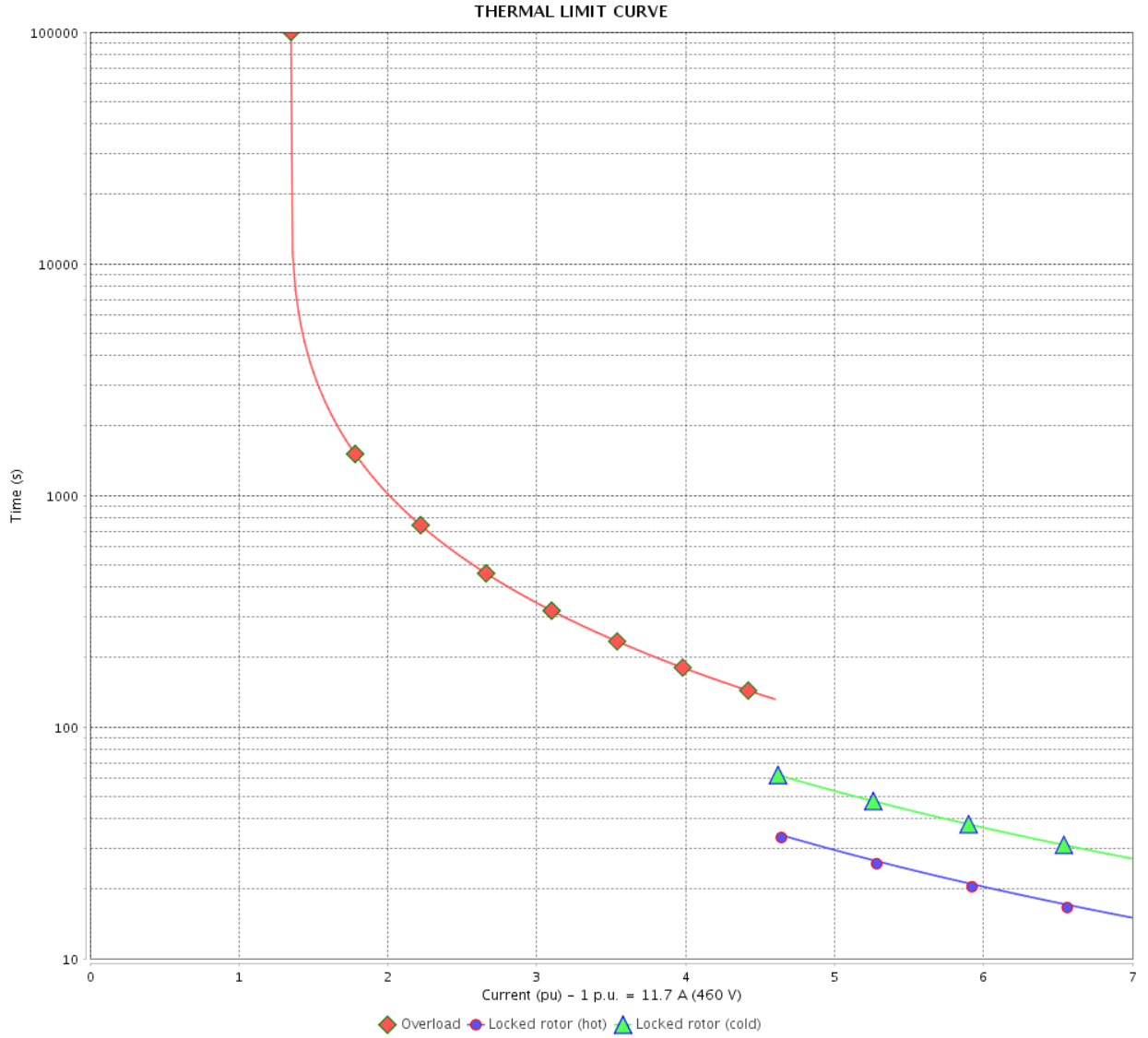
Rev.	Changes Summary	Performed	Checked	Date
Performed by				
Checked by			Page	Revision
Date	12/04/2022		4 / 6	

THERMAL LIMIT CURVE

Three Phase Induction Motor - Squirrel Cage



Customer : _____



Rev.	Changes Summary	Performed	Checked	Date
Performed by		Page		Revision
Checked by				
Date				

VFD OPERATION CURVE

Three Phase Induction Motor - Squirrel Cage

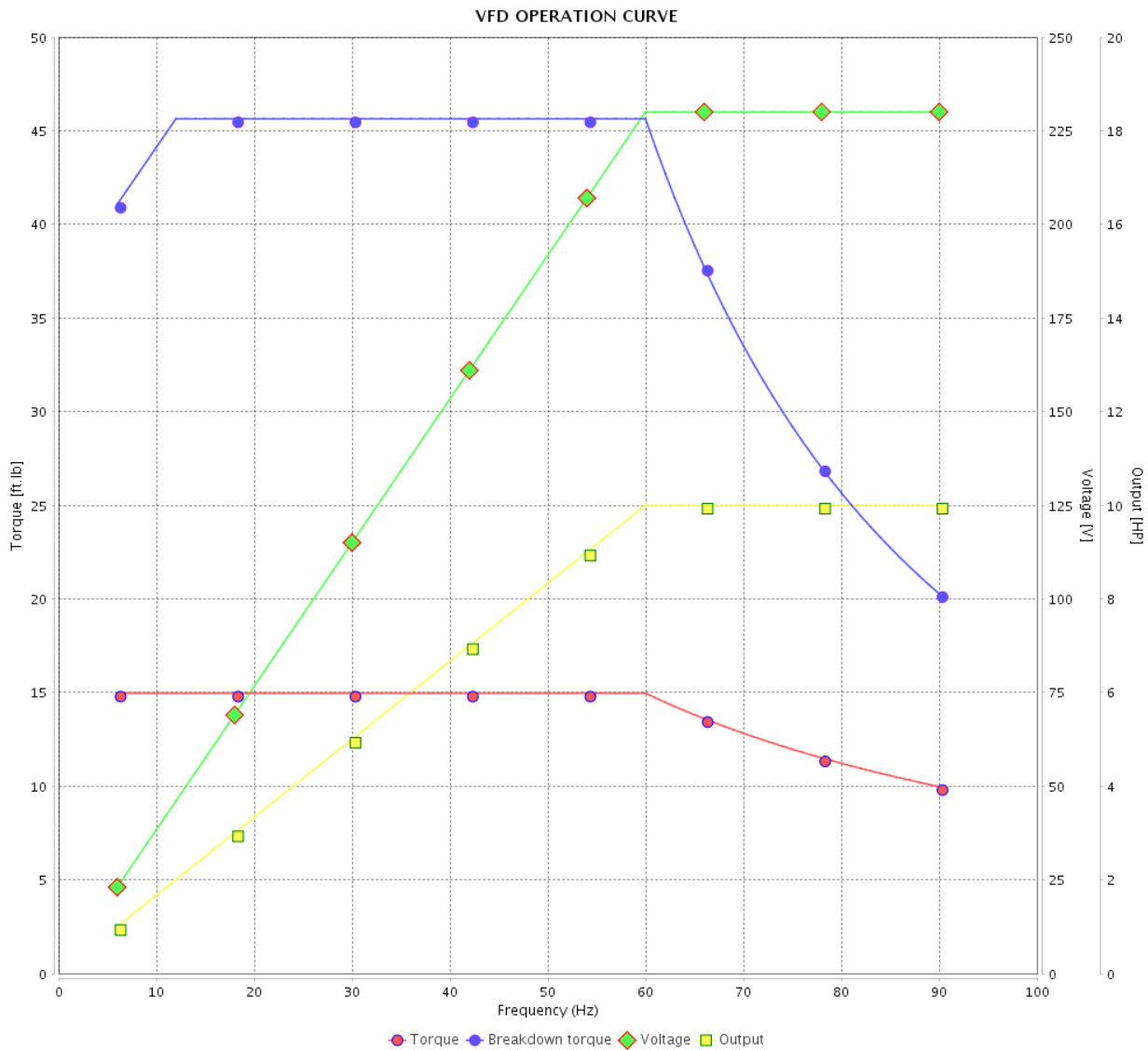


Customer :

Product line : NEMA Premium Efficiency Three-Phase

Product code : 13207633

Catalog # : 01036ET3E215T-SRT



Performance : 208-230/460 V 60 Hz 2P

Rated current : 25.9-23.5/11.7 A
 LRC : 7.0
 Rated torque : 15.0 ft.lb
 Locked rotor torque : 229 %
 Breakdown torque : 305 %
 Rated speed : 3510 rpm

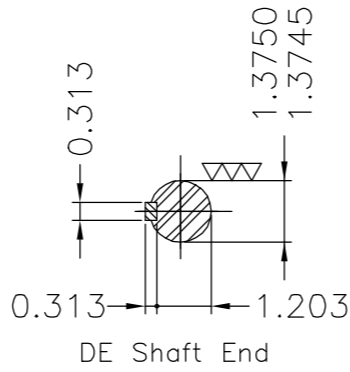
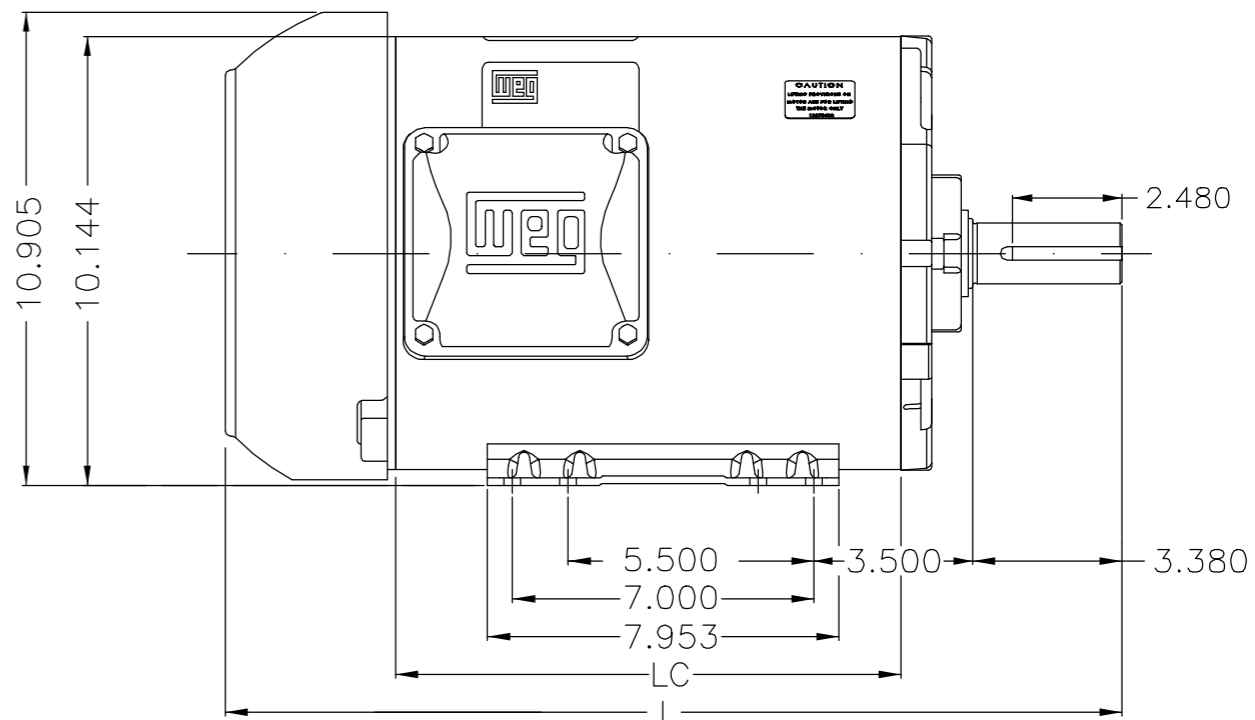
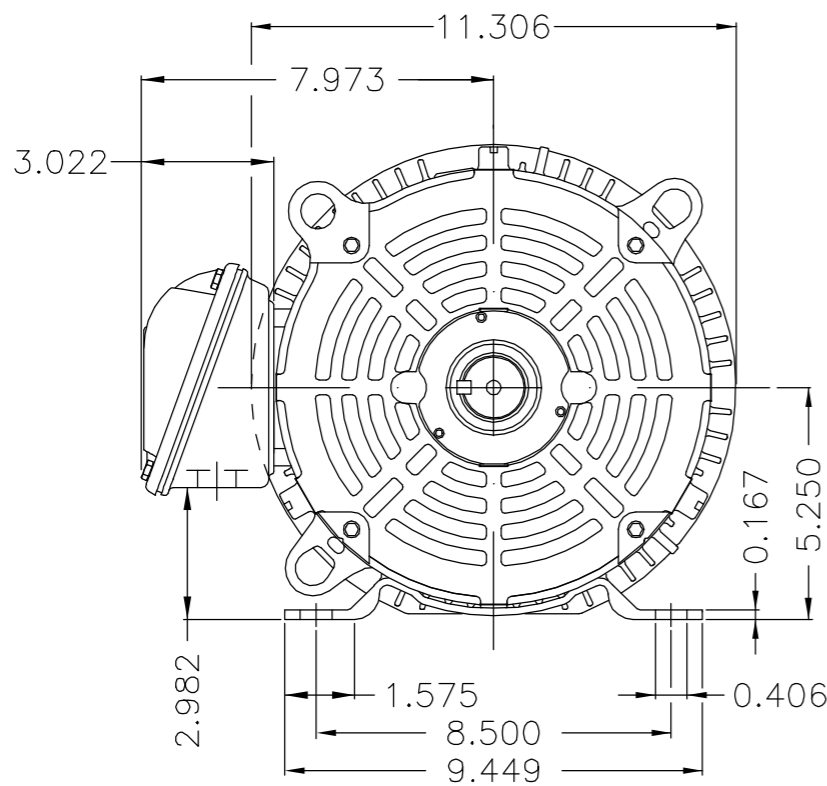
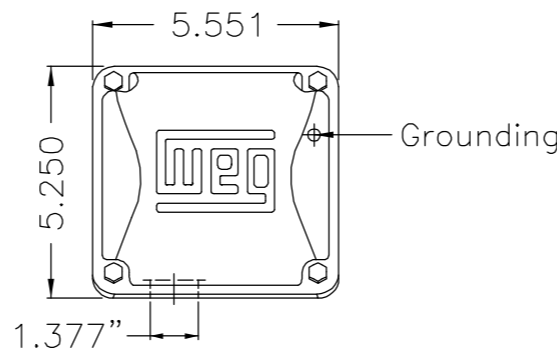
Moment of inertia (J)
 Duty cycle : Cont.(S1)
 Insulation class : F
 Service factor : 1.15
 Temperature rise : 80 K
 Design : B

Rev.	Changes Summary	Performed	Checked	Date
Performed by			Page 6 / 6	Revision
Checked by				
Date	12/04/2022			

EIXO/SHAFT	
PADRÃO/STANDARD	X
OPCIONAL/OPTIONAL	
ESPECIAL/SPECIAL	

Dimensões em polegadas
Dimensions in inches

THIS IS AN UPDATED REVISION, THE PREVIOUS ONE MUST BE DISREGARDED.



					LC	L	
7.5 HP	02 Poles	60Hz	413766802		10.236	18.897	F
7.5 HP	02 Poles	60Hz	413766801		10.236	18.897	E
7.5 HP	02 Poles	60Hz	413766759		10.236	18.897	D
10 HP	02 Poles	60Hz	413766756		10.630	19.291	C
10 HP	02 Poles	60Hz	413766755		10.630	19.291	B
10 HP	02 Poles	60Hz	413766330		10.630	19.291	A

Plano de pintura 207N / Painting plan 207N
Forma construtiva B3D / Mounting F-1/B3R(D)

WEG ELECTRIC CORP.

500001146687	ATUALIZADO PLANO DE PINTURA	MENSOR	ODORIZZI	15.03.2016	01			
500001009189	DOCUMENTO NOVO	PATRICKL	EMERSONRH	06.03.2015	00			
ECM	LOC	SUMMARY OF MODIFICATIONS		EXECUTED	CHECKED	RELEASED	DATE	VER
EXECUTED	PATRICKL	THREE P. MOTOR TEFC ROLLED STEEL NEMA P. FRAME 213/5T IP55		10003417264				
CHECKED				000 01				
RELEASED	EMERSONRH							
REL DT	06.03.2015	WMO	JARAGUA DO SUL	ENGENHARIA DE PRODUTO	SHEET	1 / 1		



NEMA
Premium



MADE IN MEXICO

MAT: 13207633 CC029A

W01.TE0IC0X0N

MODEL 01036ET3E215T-SRT

04APR2022 S/N:

**For 60Hz: Class I, Zone 2, IIC
Class I, Div.2, Gr. A,B,C,D - T3
DIV 2 Inverter Duty (SF1.00)**

CT 2:1/VT 1000:1

PH 3	Hz 60	HP 10
FR 213/5T		KW 7.5
DUTY CONT.		V 230/460
ALT 1000 m.a.s.l.		A 23.5/11.7
INS CL F AT 80K	IP55	SFA 27.0/13.5
AMB 40°C	DES B	SF 1.15
ENCL TEFC	CODE H	PF 0.89
USABLE @ 208V 25.9A		RPM 3510
SF1.00		NEMA NOM. EFF 90.2%

Electric Motor

DE 6208-ZZ	ODE 6206-ZZ	MOBIL POLYREX EM
-------------------	--------------------	-------------------------



T1-BLU T2-WHT
T3-ORG T4-YEL
T5-BLK T6-GRY
T7-PNK T8-RED
T9-BRK RED

INTERCHANGE ANY TWO LINE WIRES TO REVERSE THE ROTATION

WARNING: Motor must be grounded in accordance with local and national electrical codes to prevent serious electrical shocks. Disconnect power source before servicing unit.



AVERTISSEMENT: Le moteur doit être mis à la terre conformément aux codes électriques locaux et nationaux afin d'éviter tout choc électrique grave. Déconnectez l'alimentation avant l'entretien de la machine.

