

DATA SHEET



Three Phase Induction Motor - Squirrel Cage

Customer :						
Product line		: NEMA Premium Efficiency Three-Phase		Product code :	12812067	
				Catalog # :	01518ET3HR254TC-S	
Frame	: 254/6TC		Locked rotor time	: 34s (cold) 19s (hot)		
Output	: 15 HP (11 kW)		Temperature rise	: 80 K		
Poles	: 4		Duty cycle	: Cont.(S1)		
Frequency	: 60 Hz		Ambient temperature	: -20°C to +40°C		
Rated voltage	: 575 V		Altitude	: 1000 m.a.s.l.		
Rated current	: 14.6 A		Protection degree	: IP55		
L. R. Amperes	: 94.6 A		Cooling method	: IC411 - TEFC		
LRC	: 6.5x(Code G)		Mounting	: F-1		
No load current	: 6.92 A		Rotation ¹	: Both (CW and CCW)		
Rated speed	: 1770 rpm		Noise level ²	: 68.0 dB(A)		
Slip	: 1.67 %		Starting method	: Direct On Line		
Rated torque	: 44.5 ft.lb		Approx. weight ³	: 224 lb		
Locked rotor torque	: 250 %					
Breakdown torque	: 300 %					
Insulation class	: F					
Service factor	: 1.15					
Moment of inertia (J)	: 2.15 sq.ft.lb					
Design	: B					
Output	25%	50%	75%	100%	Foundation loads	
Efficiency (%)	90.8	91.0	92.4	92.4	Max. traction : 528 lb	
Power Factor	0.39	0.64	0.76	0.82	Max. compression : 752 lb	
		<u>Drive end</u>		<u>Non drive end</u>		
Bearing type	: 6309 Z C3		: 6208 Z C3			
Sealing	: V'Ring		: Without Bearing Seal			
Lubrication interval	: 20000 h		: 20000 h			
Lubricant amount	: 13 g		: 8 g			
Lubricant type	: Mobil Polyrex EM					
Notes						
This revision replaces and cancel the previous one, which must be eliminated. (1) Looking the motor from the shaft end. (2) Measured at 1m and with tolerance of +3dB(A). (3) Approximate weight subject to changes after manufacturing process. (4) At 100% of full load.			These are average values based on tests with sinusoidal power supply, subject to the tolerances stipulated in NEMA MG-1.			
Rev.	Changes Summary			Performed	Checked	Date
Performed by						
Checked by					Page	Revision
Date	13/04/2022				1 / 6	

TORQUE AND CURRENT VS SPEED CURVE

Three Phase Induction Motor - Squirrel Cage



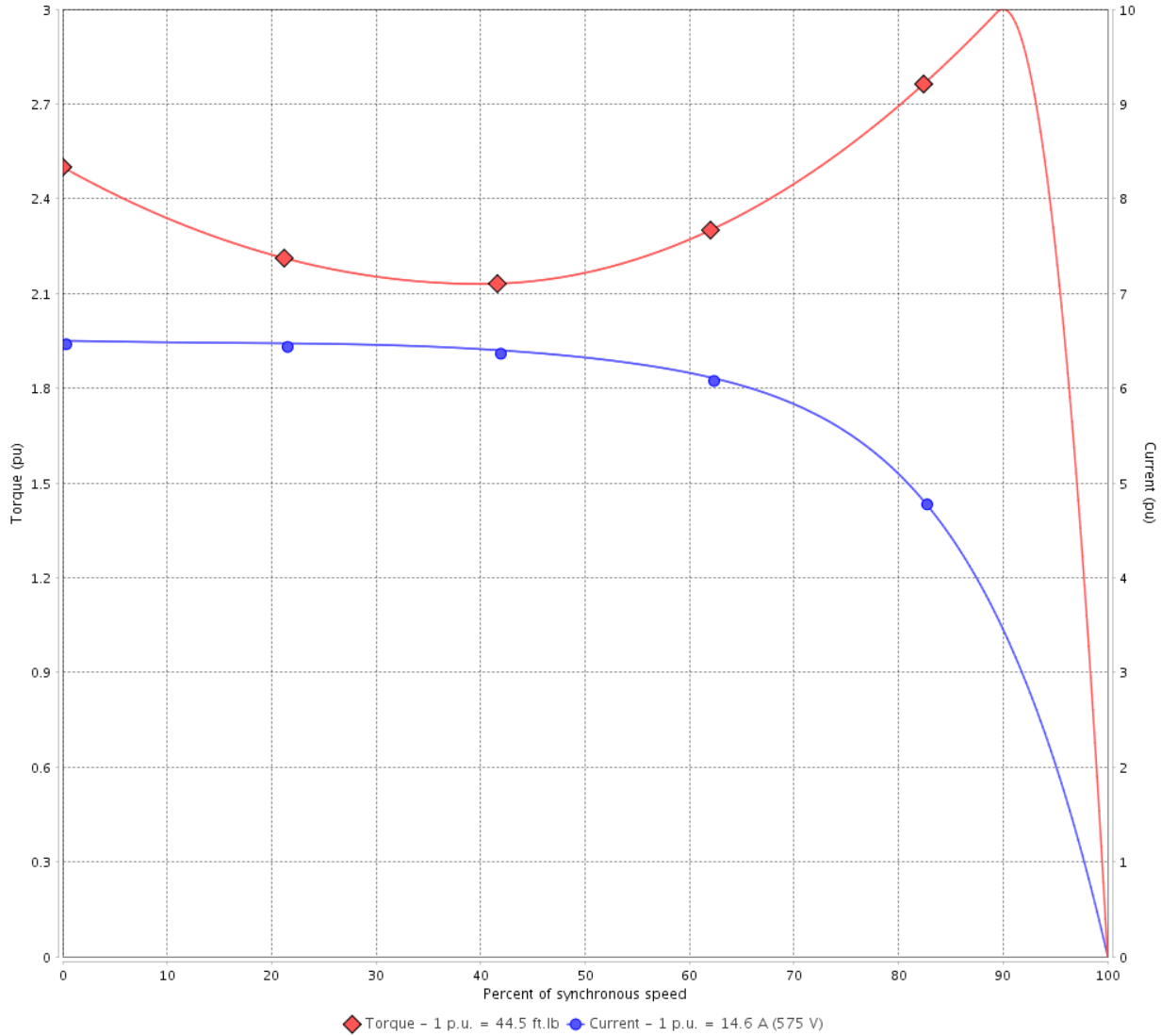
Customer :

Product line : NEMA Premium Efficiency Three-Phase

Product code : 12812067

Catalog # : 01518ET3HR254TC-S

TORQUE AND CURRENT VS SPEED CURVE



Performance : 575 V 60 Hz 4P

Rated current	: 14.6 A	Moment of inertia (J)	: 2.15 sq.ft.lb
LRC	: 6.5	Duty cycle	: Cont.(S1)
Rated torque	: 44.5 ft.lb	Insulation class	: F
Locked rotor torque	: 250 %	Service factor	: 1.15
Breakdown torque	: 300 %	Temperature rise	: 80 K
Rated speed	: 1770 rpm	Design	: B

Locked rotor time : 34s (cold) 19s (hot)

Rev.	Changes Summary	Performed	Checked	Date
Performed by			Page 2 / 6	Revision
Checked by				
Date	13/04/2022			

LOAD PERFORMANCE CURVE

Three Phase Induction Motor - Squirrel Cage

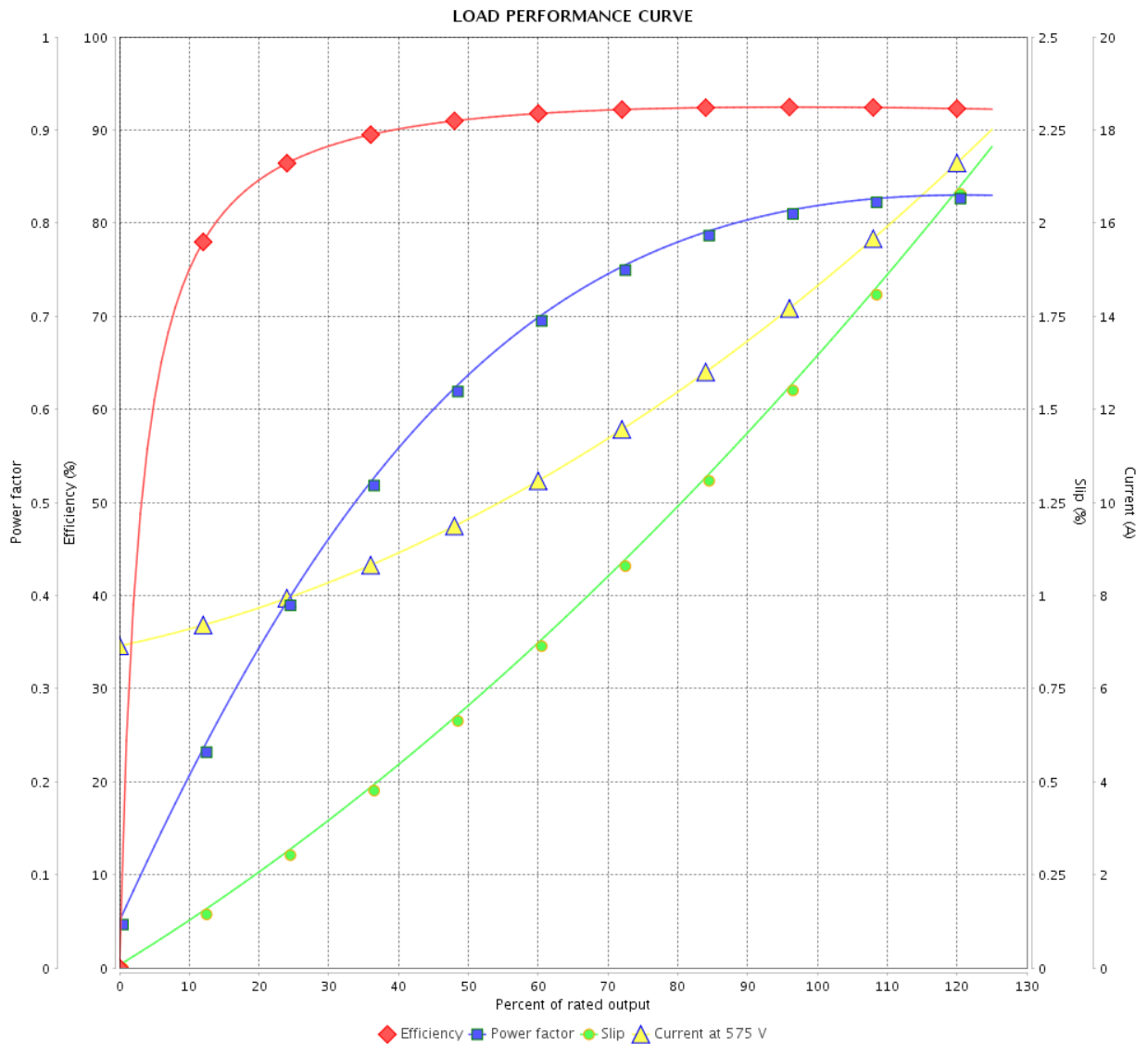


Customer :

Product line : NEMA Premium Efficiency Three-Phase

Product code : 12812067

Catalog # : 01518ET3HR254TC-S



Performance : 575 V 60 Hz 4P

Rated current : 14.6 A
 LRC : 6.5
 Rated torque : 44.5 ft.lb
 Locked rotor torque : 250 %
 Breakdown torque : 300 %
 Rated speed : 1770 rpm

Moment of inertia (J) : 2.15 sq.ft.lb
 Duty cycle : Cont.(S1)
 Insulation class : F
 Service factor : 1.15
 Temperature rise : 80 K
 Design : B

Rev.	Changes Summary	Performed	Checked	Date
Performed by		Page		Revision
Checked by		3 / 6		
Date		13/04/2022		

THERMAL LIMIT CURVE

Three Phase Induction Motor - Squirrel Cage



Customer :

Product line : NEMA Premium Efficiency Three-Phase
Product code : 12812067
Catalog # : 01518ET3HR254TC-S

Performance : 575 V 60 Hz 4P

Rated current	: 14.6 A	Moment of inertia (J)	: 2.15 sq.ft.lb
LRC	: 6.5	Duty cycle	: Cont.(S1)
Rated torque	: 44.5 ft.lb	Insulation class	: F
Locked rotor torque	: 250 %	Service factor	: 1.15
Breakdown torque	: 300 %	Temperature rise	: 80 K
Rated speed	: 1770 rpm	Design	: B

Heating constant

Cooling constant

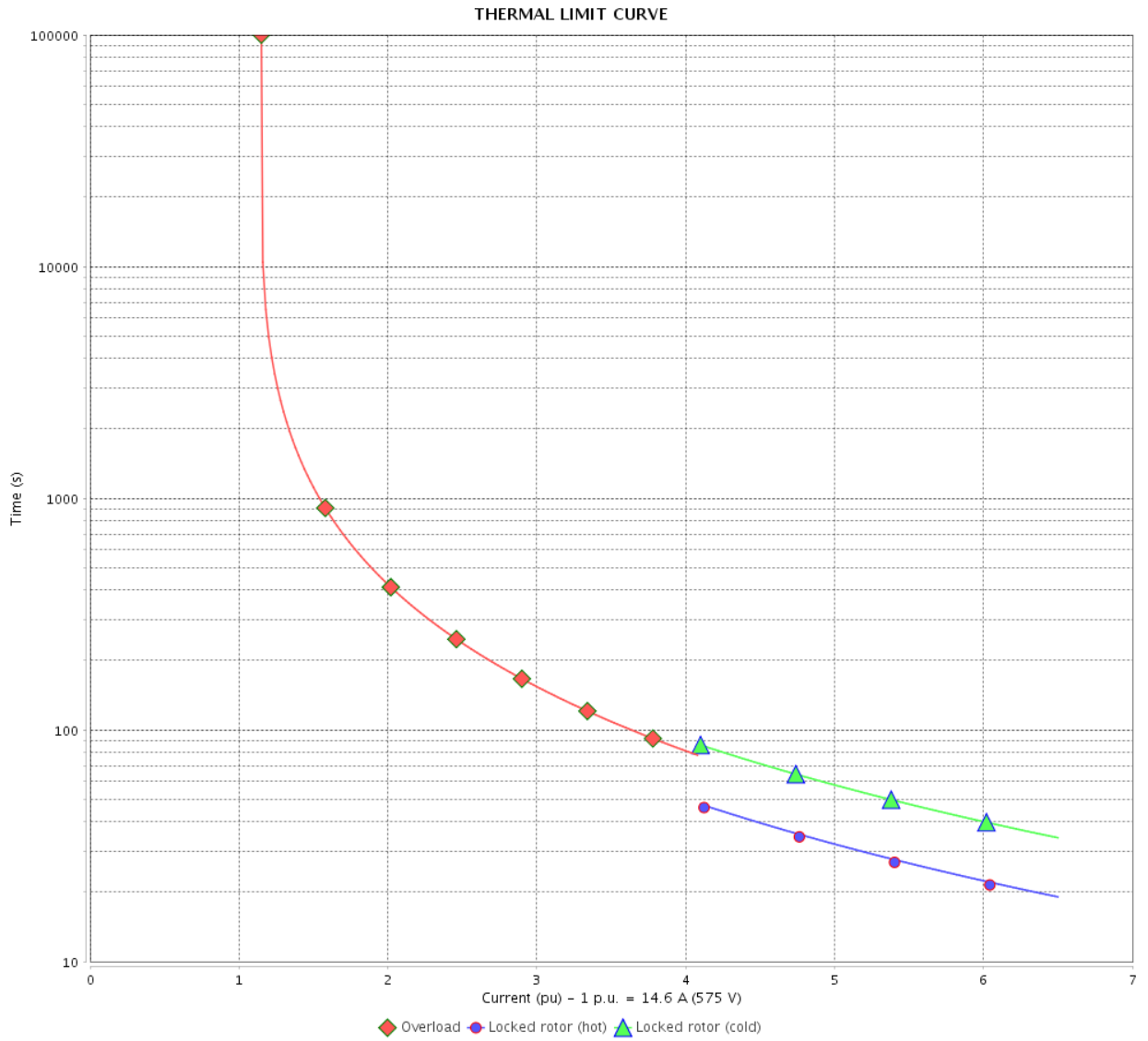
Rev.	Changes Summary	Performed	Checked	Date
Performed by				
Checked by			Page	Revision
Date	13/04/2022		4 / 6	

THERMAL LIMIT CURVE

Three Phase Induction Motor - Squirrel Cage



Customer : _____



Rev.	Changes Summary	Performed	Checked	Date
Performed by		Page 5 / 6		Revision
Checked by				
Date				

VFD OPERATION CURVE

Three Phase Induction Motor - Squirrel Cage



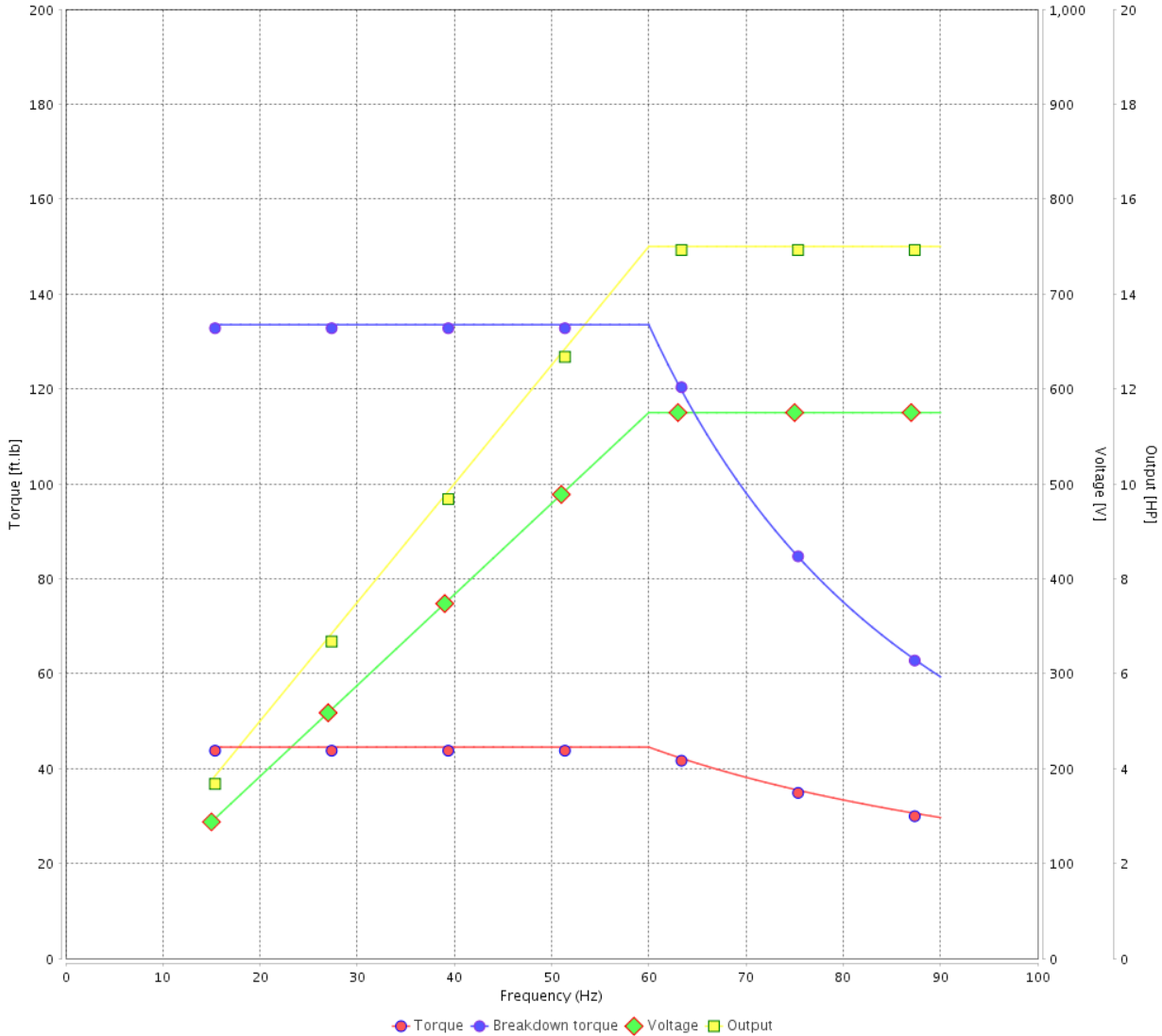
Customer :

Product line : NEMA Premium Efficiency Three-Phase

Product code : 12812067

Catalog # : 01518ET3HR254TC-S

VFD OPERATION CURVE



Performance : 575 V 60 Hz 4P

Rated current : 14.6 A
 LRC : 6.5
 Rated torque : 44.5 ft.lb
 Locked rotor torque : 250 %
 Breakdown torque : 300 %
 Rated speed : 1770 rpm

Moment of inertia (J) : 2.15 sq.ft.lb
 Duty cycle : Cont.(S1)
 Insulation class : F
 Service factor : 1.15
 Temperature rise : 80 K
 Design : B

Rev.	Changes Summary	Performed	Checked	Date
Performed by			Page	Revision
Checked by				
Date				

1 2 3 4 5 6

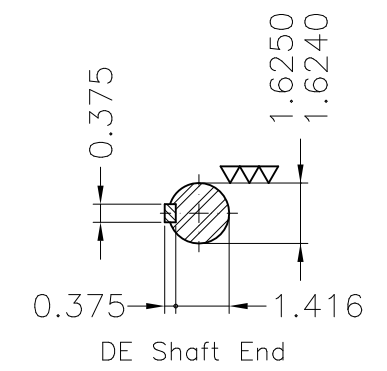
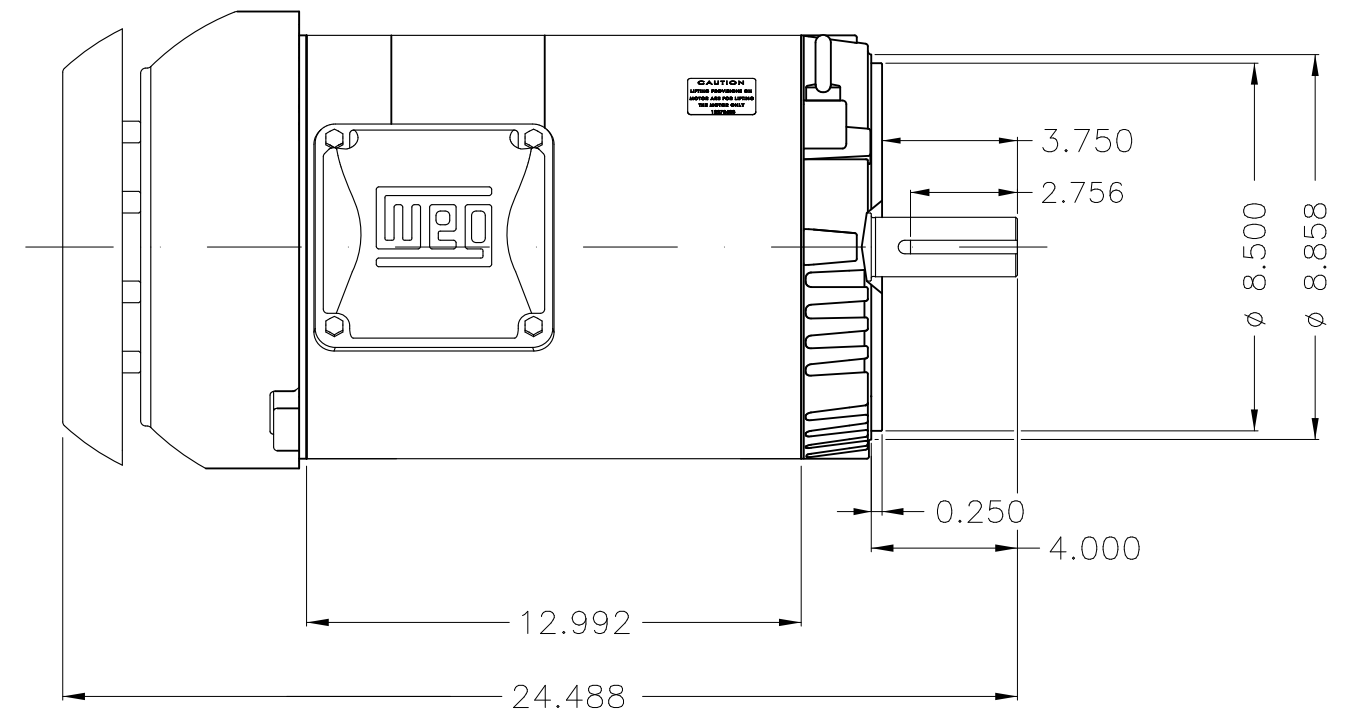
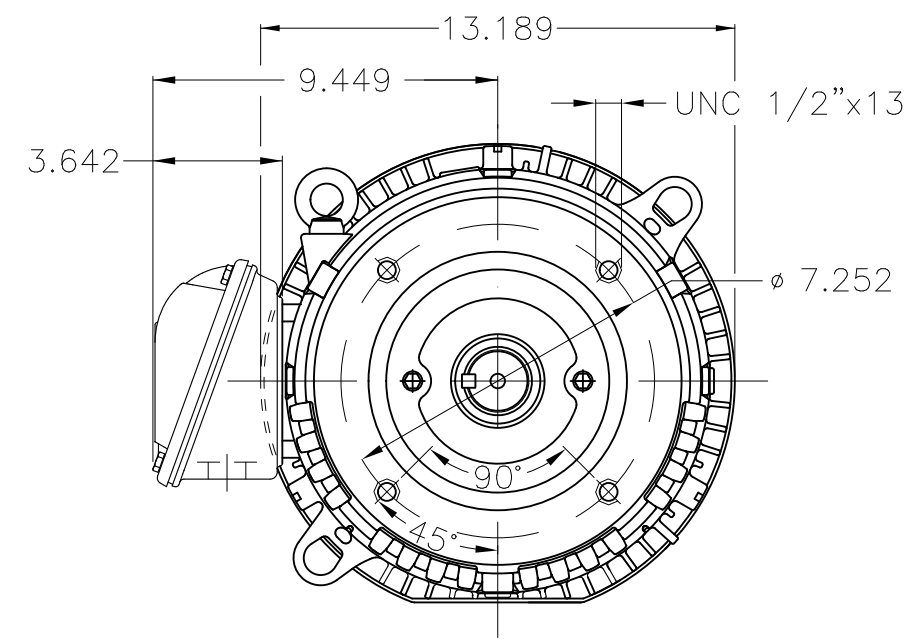
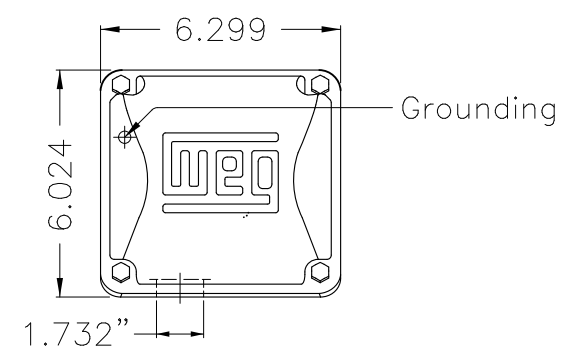
A

B


C

D

E



Dimensions in inches

Color Munsell N 1 matte black										
Painting plan 207N										
Mounting F-1/B14R(D)										
ECM	LOC	SUMMARY OF MODIFICATIONS				EXECUTED	CHECKED	RELEASED	DATE	VER
EXECUTED	PIRWBUSER	THREE PH. MOTOR ROLLED STEEL PREM. EFF.					PREVIEW WDD			
CHECKED		FRAME 254/6TC IP55 TEFC								
RELEASED										
REL DT.	WMO	Jaragua do Sul	Product Engineering			SHEET	1 / 1			

15 HP 04 Poles 60 Hz

**NEMA**
Premium

MADE IN MEXICO

MAT: 12812067 CC029A

W01.TE0IC0X0N

MODEL 01518ET3HR254TC-S

15JUL2021 S/N:

For 60Hz: Class I, Zone 2, IIC
Class I, Div.2, Gr. A,B,C,D - T3

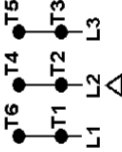
DIV 2 Inverter Duty (SF1.00)

CT 2:1/VT 1000:1

PH 3	Hz 60	HP 15
FR 254/6TC		KW 11
DUTY CONT.		V 575
ALT 1000 m.a.s.l.		A 14.6
INS CL F AT 80K	IP55	SFA 16.8
AMB 40°C	DES B	SF 1.15
ENCL TEFC	CODE H	PF 0.82
		RPM 1770
		NEMA NOM. EFF 92.4%

For safe area-Inverter duty motor For use on VPWM 1000:1 VT, 4:1 CT

DE 6309-Z-C3 ODE 6208-Z-C3 MOBIL POLYREX EM 20000h

T1-BLU
T2-WHT
T3-ORG
T4-YEL
T5-BLK
T6-GRY

INTERCHANGE ANY TWO LINE WIRES TO REVERSE THE ROTATION

WARNING: Motor must be grounded in accordance with local and national electrical codes to prevent serious electrical shocks. Disconnect power source before servicing unit.



AVERTISSEMENT: Le moteur doit être mis à la terre

conformément aux codes électriques locaux et nationaux afin d'éviter tout choc électrique grave. Déconnectez l'alimentation avant l'entretien de la machine.

