

DATA SHEET

Three Phase Induction Motor - Squirrel Cage



Customer :			
Product line	: NEMA Premium Efficiency Three-Phase	Product code :	12636473
		Catalog # :	01518OT3E254TC-S
Frame	: 254/6TC	Cooling method	: IC01 - ODP
Insulation class	: F	Mounting	: F-1
Duty cycle	: Cont.(S1)	Rotation ¹	: Both (CW and CCW)
Ambient temperature	: -20°C to +40°C	Starting method	: Direct On Line
Altitude	: 1000 m.a.s.l.	Approx. weight ²	: 203 lb
Design	: B	Moment of inertia (J)	: 1.82 sq.ft.lb
Output [HP]	15	15	15
Poles	4	4	4
Frequency [Hz]	60	50	50
Rated voltage [V]	230/460	190-220/380	415
Rated current [A]	37.2/18.6	43.8-37.8/21.9	20.9
L. R. Amperes [A]	249/125	237-204/118	132
LRC [A]	6.7x(Code H)	5.4x(Code F)	6.3x(Code H)
No load current [A]	19.0/9.50	17.3-15.0/8.67	10.5
Rated speed [RPM]	1775	1465	1470
Slip [%]	1.39	2.33	2.00
Rated torque [ft.lb]	44.4	53.8	53.6
Locked rotor torque [%]	240	170	210
Breakdown torque [%]	300	220	270
Service factor	1.15	1.15	1.15
Temperature rise	80 K	80 K	80 K
Locked rotor time	30s (cold) 17s (hot)	0s (cold) 0s (hot)	0s (cold) 0s (hot)
Noise level ²	64.0 dB(A)	62.0 dB(A)	62.0 dB(A)
Efficiency (%)	25%		
	50%	91.7	91.3
	75%	92.4	91.0
	100%	93.0	89.7
Power Factor	25%		
	50%	0.62	0.71
	75%	0.73	0.81
	100%	0.80	0.85
Bearing type	: <u>Drive end</u> 6309 Z C3 <u>Non drive end</u> 6208 Z C3	Foundation loads	
Sealing	: Without Without	Max. traction	: 592 lb
	: Bearing Seal Bearing Seal	Max. compression	: 795 lb
Lubrication interval	: 20000 h 20000 h		
Lubricant amount	: 13 g 8 g		
Lubricant type	: Mobil Polyrex EM		
Notes USABLE @208V 41.1A SF 1.00 SFA 41.1A			
This revision replaces and cancel the previous one, which must be eliminated. (1) Looking the motor from the shaft end. (2) Measured at 1m and with tolerance of +3dB(A). (3) Approximate weight subject to changes after manufacturing process. (4) At 100% of full load.		These are average values based on tests with sinusoidal power supply, subject to the tolerances stipulated in NEMA MG-1.	
Rev.	Changes Summary	Performed	Checked
			Date
Performed by			
Checked by			Page
Date	13/04/2022		Revision
			1 / 16

TORQUE AND CURRENT VS SPEED CURVE

Three Phase Induction Motor - Squirrel Cage



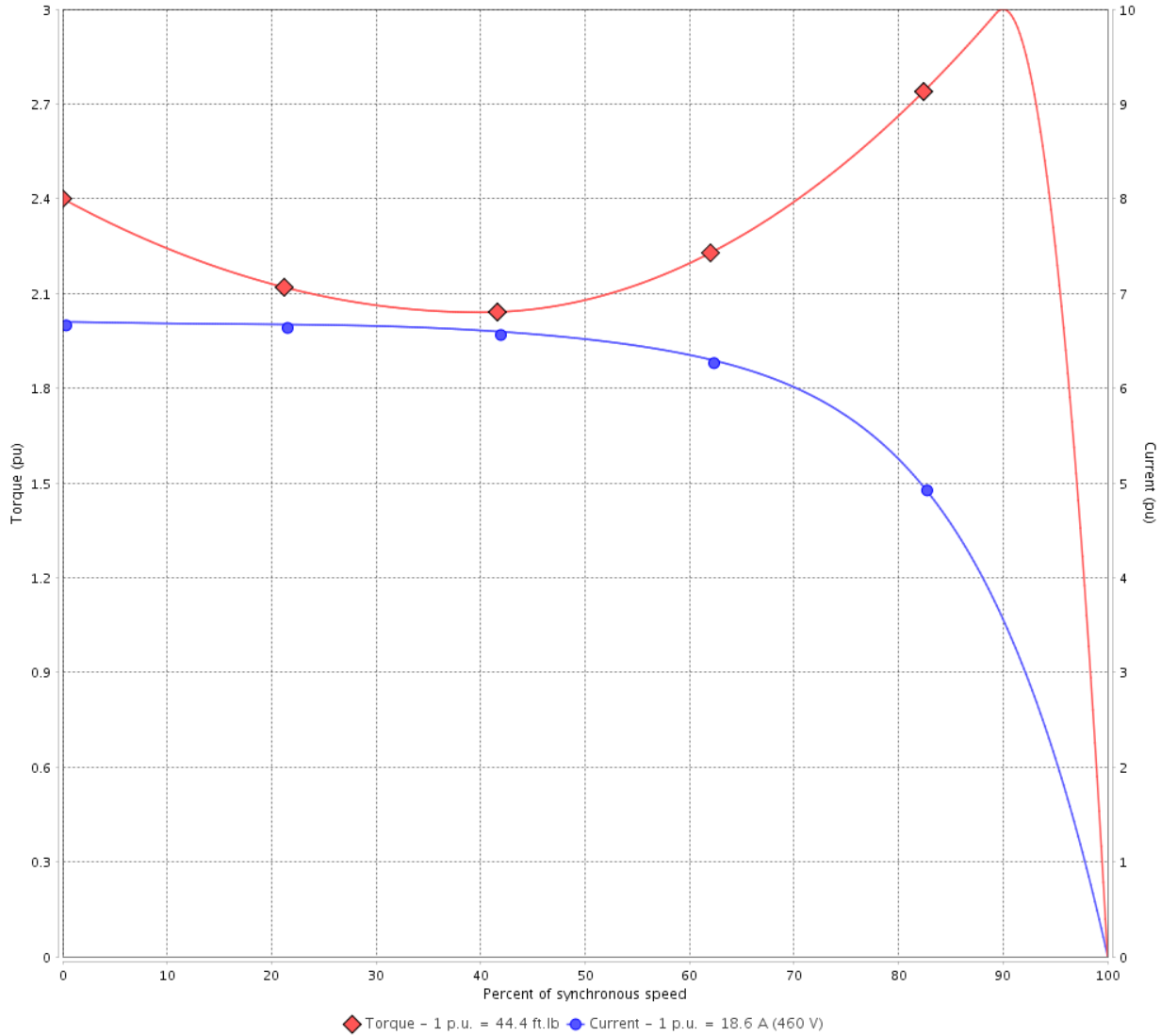
Customer :

Product line : NEMA Premium Efficiency Three-Phase

Product code : 12636473

Catalog # : 01518OT3E254TC-S

TORQUE AND CURRENT VS SPEED CURVE



Performance : 230/460 V 60 Hz 4P

Rated current	: 37.2/18.6 A	Moment of inertia (J)	: 1.82 sq.ft.lb
LRC	: 6.7	Duty cycle	: Cont.(S1)
Rated torque	: 44.4 ft.lb	Insulation class	: F
Locked rotor torque	: 240 %	Service factor	: 1.15
Breakdown torque	: 300 %	Temperature rise	: 80 K
Rated speed	: 1775 rpm	Design	: B

Locked rotor time : 30s (cold) 17s (hot)

Rev.	Changes Summary	Performed	Checked	Date
Performed by			Page 2 / 16	Revision
Checked by				
Date	13/04/2022			

TORQUE AND CURRENT VS SPEED CURVE



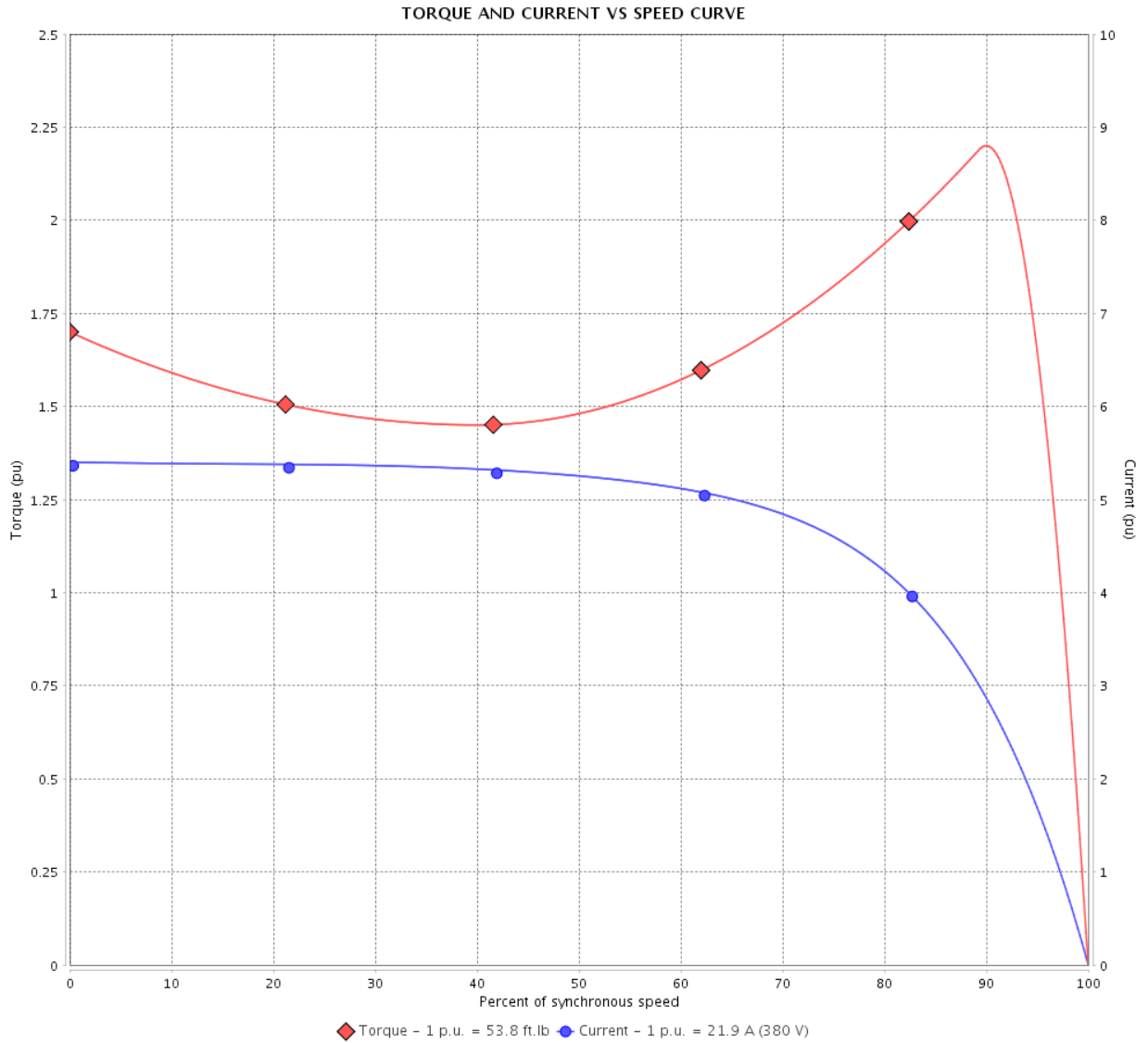
Three Phase Induction Motor - Squirrel Cage

Customer :

Product line : NEMA Premium Efficiency Three-Phase

Product code : 12636473

Catalog # : 01518OT3E254TC-S



Performance : 190-220/380 V 50 Hz 4P

Rated current	: 43.8-37.8/21.9 A	Moment of inertia (J)	: 1.82 sq.ft.lb
LRC	: 5.4	Duty cycle	: Cont.(S1)
Rated torque	: 53.8 ft.lb	Insulation class	: F
Locked rotor torque	: 170 %	Service factor	: 1.15
Breakdown torque	: 220 %	Temperature rise	: 80 K
Rated speed	: 1465 rpm	Design	: B

Locked rotor time : 0s (cold) 0s (hot)

Rev.	Changes Summary	Performed	Checked	Date
Performed by			Page 3 / 16	Revision
Checked by				
Date	13/04/2022			

TORQUE AND CURRENT VS SPEED CURVE

Three Phase Induction Motor - Squirrel Cage



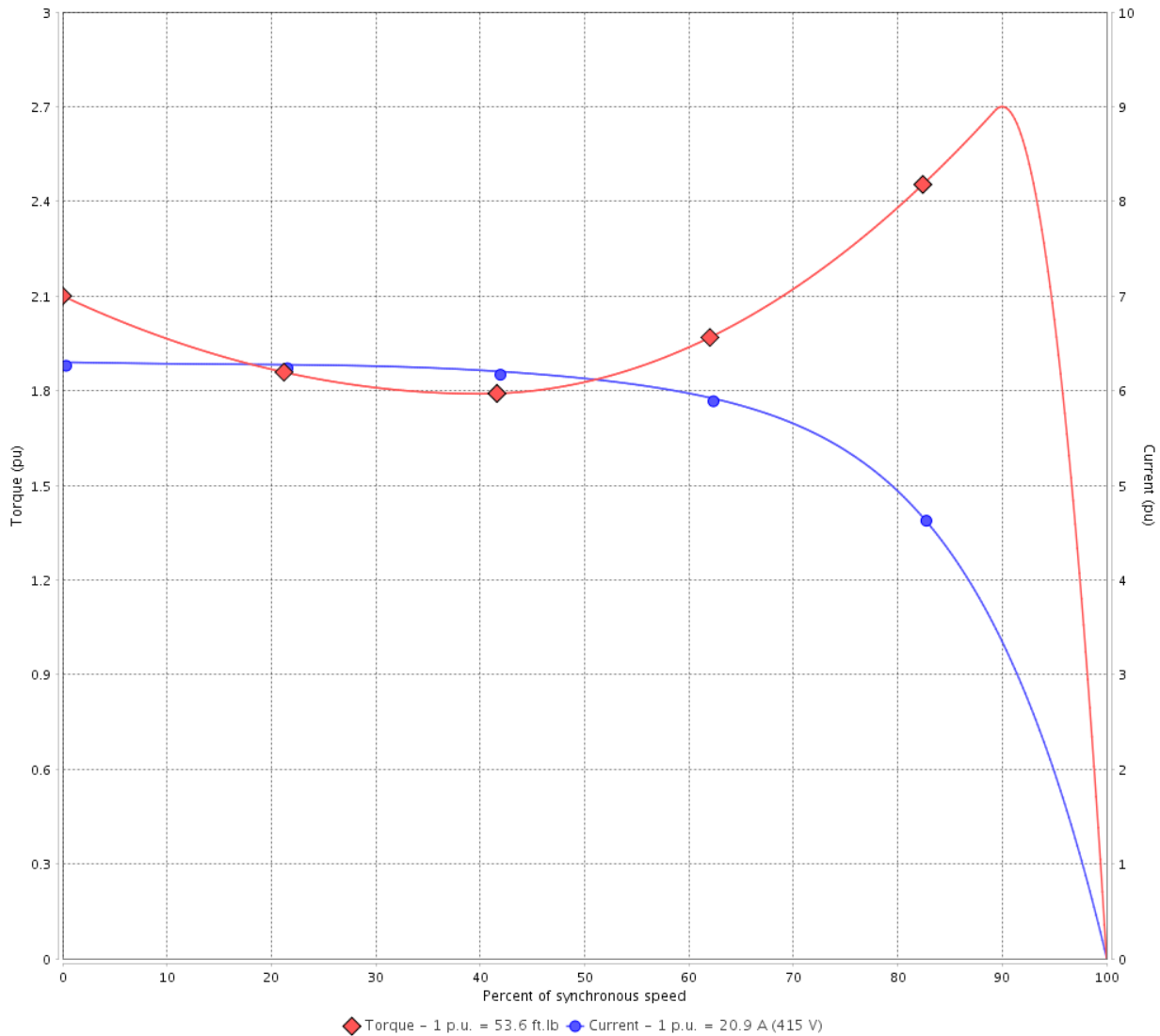
Customer :

Product line : NEMA Premium Efficiency Three-Phase

Product code : 12636473

Catalog # : 01518OT3E254TC-S

TORQUE AND CURRENT VS SPEED CURVE



Performance : 415 V 50 Hz 4P

Rated current	: 20.9 A	Moment of inertia (J)	: 1.82 sq.ft.lb
LRC	: 6.3	Duty cycle	: Cont.(S1)
Rated torque	: 53.6 ft.lb	Insulation class	: F
Locked rotor torque	: 210 %	Service factor	: 1.15
Breakdown torque	: 270 %	Temperature rise	: 80 K
Rated speed	: 1470 rpm	Design	: B

Locked rotor time : 0s (cold) 0s (hot)

Rev.	Changes Summary	Performed	Checked	Date
Performed by			Page 4 / 16	Revision
Checked by				
Date	13/04/2022			

LOAD PERFORMANCE CURVE

Three Phase Induction Motor - Squirrel Cage

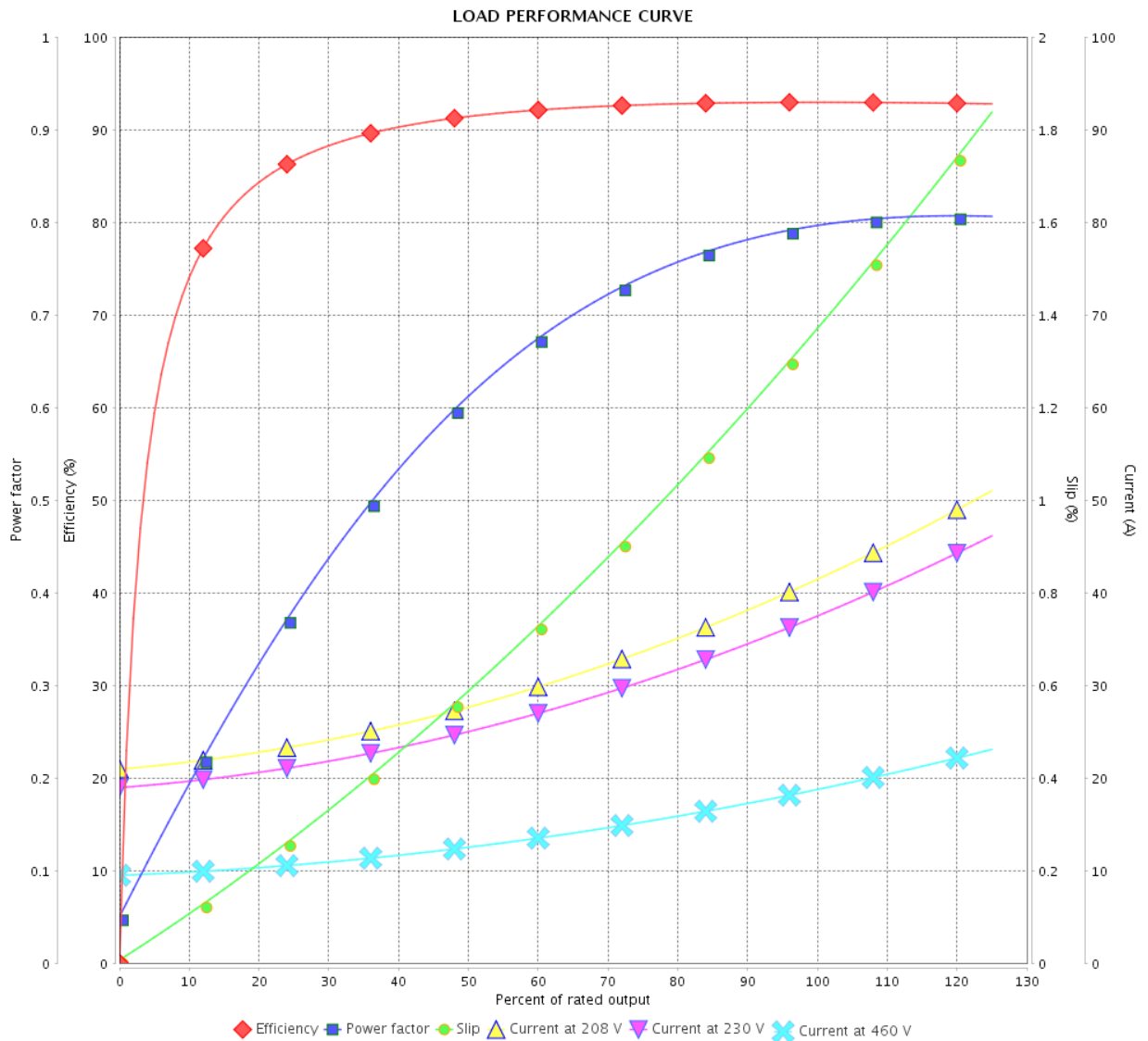


Customer :

Product line : NEMA Premium Efficiency Three-Phase

Product code : 12636473

Catalog # : 01518OT3E254TC-S



Performance : 230/460 V 60 Hz 4P

Rated current : 37.2/18.6 A
 LRC : 6.7
 Rated torque : 44.4 ft.lb
 Locked rotor torque : 240 %
 Breakdown torque : 300 %
 Rated speed : 1775 rpm

Moment of inertia (J) : 1.82 sq.ft.lb
 Duty cycle : Cont.(S1)
 Insulation class : F
 Service factor : 1.15
 Temperature rise : 80 K
 Design : B

Rev.	Changes Summary	Performed	Checked	Date
Performed by		Page		Revision
Checked by		5 / 16		
Date		13/04/2022		

LOAD PERFORMANCE CURVE

Three Phase Induction Motor - Squirrel Cage

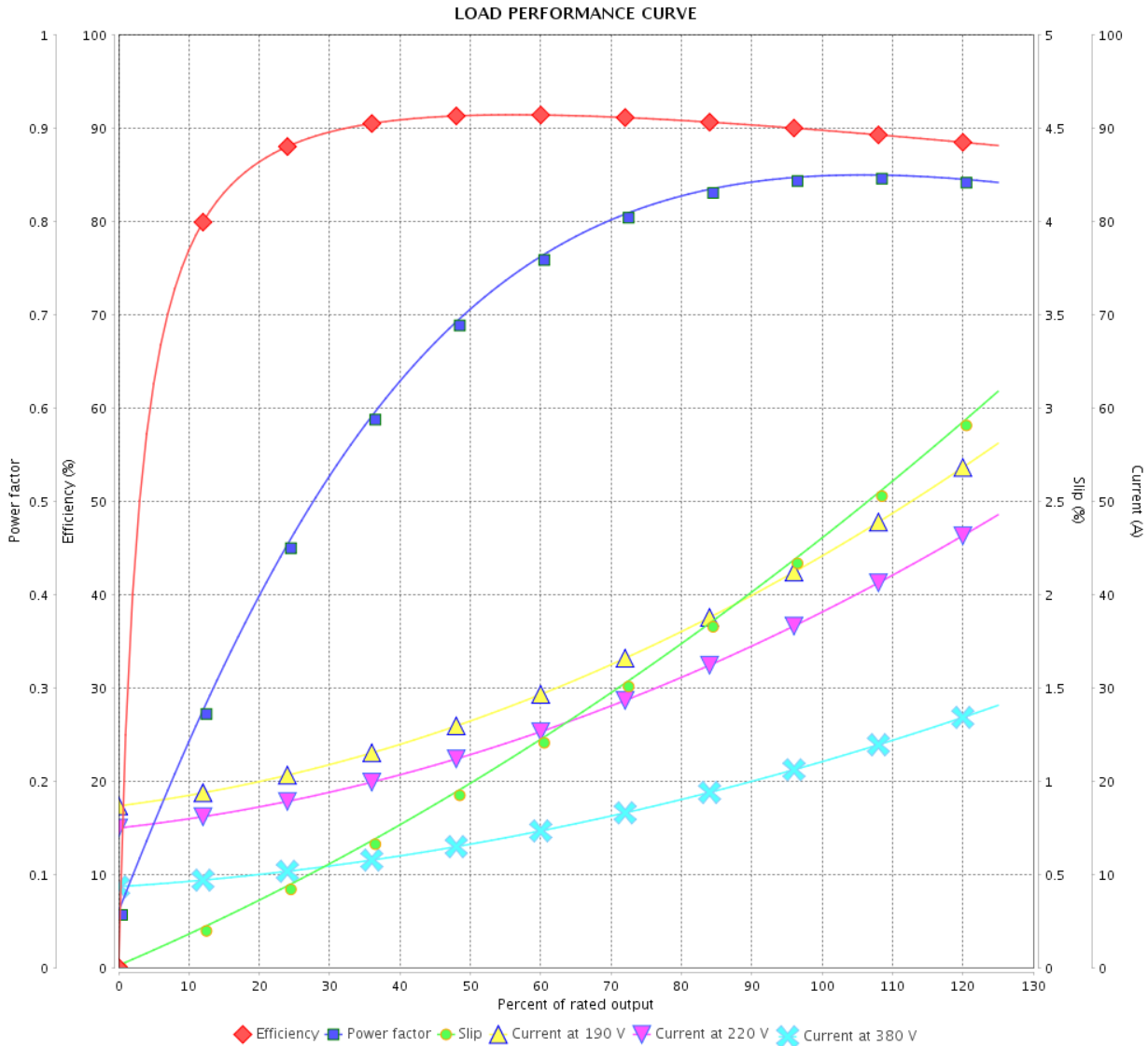


Customer :

Product line : NEMA Premium Efficiency Three-Phase

Product code : 12636473

Catalog # : 01518OT3E254TC-S



Performance : 190-220/380 V 50 Hz 4P

Rated current : 43.8-37.8/21.9 A
 LRC : 5.4
 Rated torque : 53.8 ft.lb
 Locked rotor torque : 170 %
 Breakdown torque : 220 %
 Rated speed : 1465 rpm

Moment of inertia (J) : 1.82 sq.ft.lb
 Duty cycle : Cont.(S1)
 Insulation class : F
 Service factor : 1.15
 Temperature rise : 80 K
 Design : B

Rev.	Changes Summary	Performed	Checked	Date
Performed by			Page 6 / 16	Revision
Checked by				
Date	13/04/2022			

LOAD PERFORMANCE CURVE

Three Phase Induction Motor - Squirrel Cage

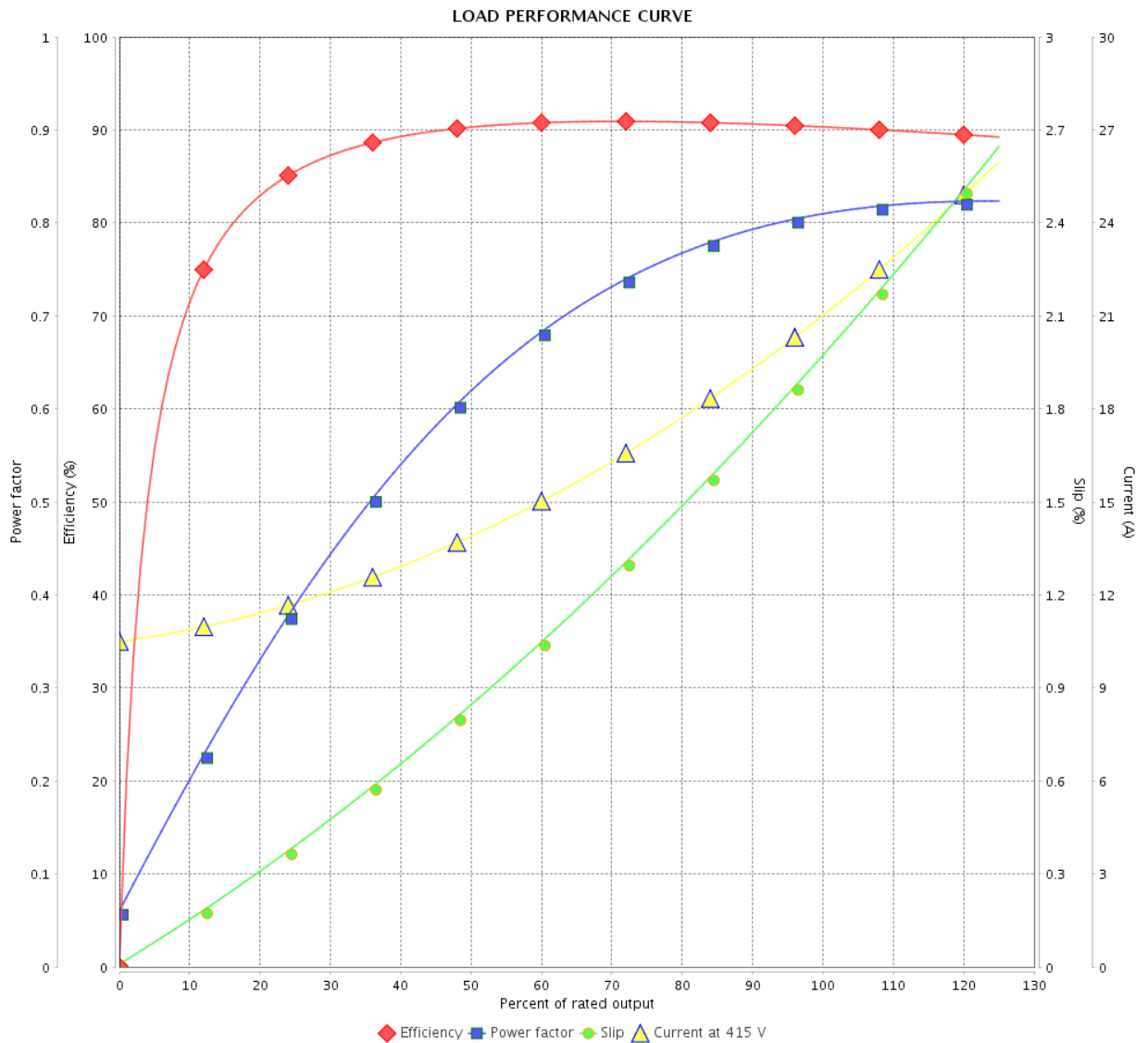


Customer :

Product line : NEMA Premium Efficiency Three-Phase

Product code : 12636473

Catalog # : 01518OT3E254TC-S



Performance : 415 V 50 Hz 4P

Rated current : 20.9 A
 LRC : 6.3
 Rated torque : 53.6 ft.lb
 Locked rotor torque : 210 %
 Breakdown torque : 270 %
 Rated speed : 1470 rpm

Moment of inertia (J) : 1.82 sq.ft.lb
 Duty cycle : Cont.(S1)
 Insulation class : F
 Service factor : 1.15
 Temperature rise : 80 K
 Design : B

Rev.	Changes Summary	Performed	Checked	Date
Performed by		Page		Revision
Checked by		7 / 16		
Date		13/04/2022		

THERMAL LIMIT CURVE



Three Phase Induction Motor - Squirrel Cage

Customer :

Product line : NEMA Premium Efficiency Three-Phase
Product code : 12636473
Catalog # : 01518OT3E254TC-S

Performance : 230/460 V 60 Hz 4P

Rated current	: 37.2/18.6 A	Moment of inertia (J)	: 1.82 sq.ft.lb
LRC	: 6.7	Duty cycle	: Cont.(S1)
Rated torque	: 44.4 ft.lb	Insulation class	: F
Locked rotor torque	: 240 %	Service factor	: 1.15
Breakdown torque	: 300 %	Temperature rise	: 80 K
Rated speed	: 1775 rpm	Design	: B

Heating constant

Cooling constant

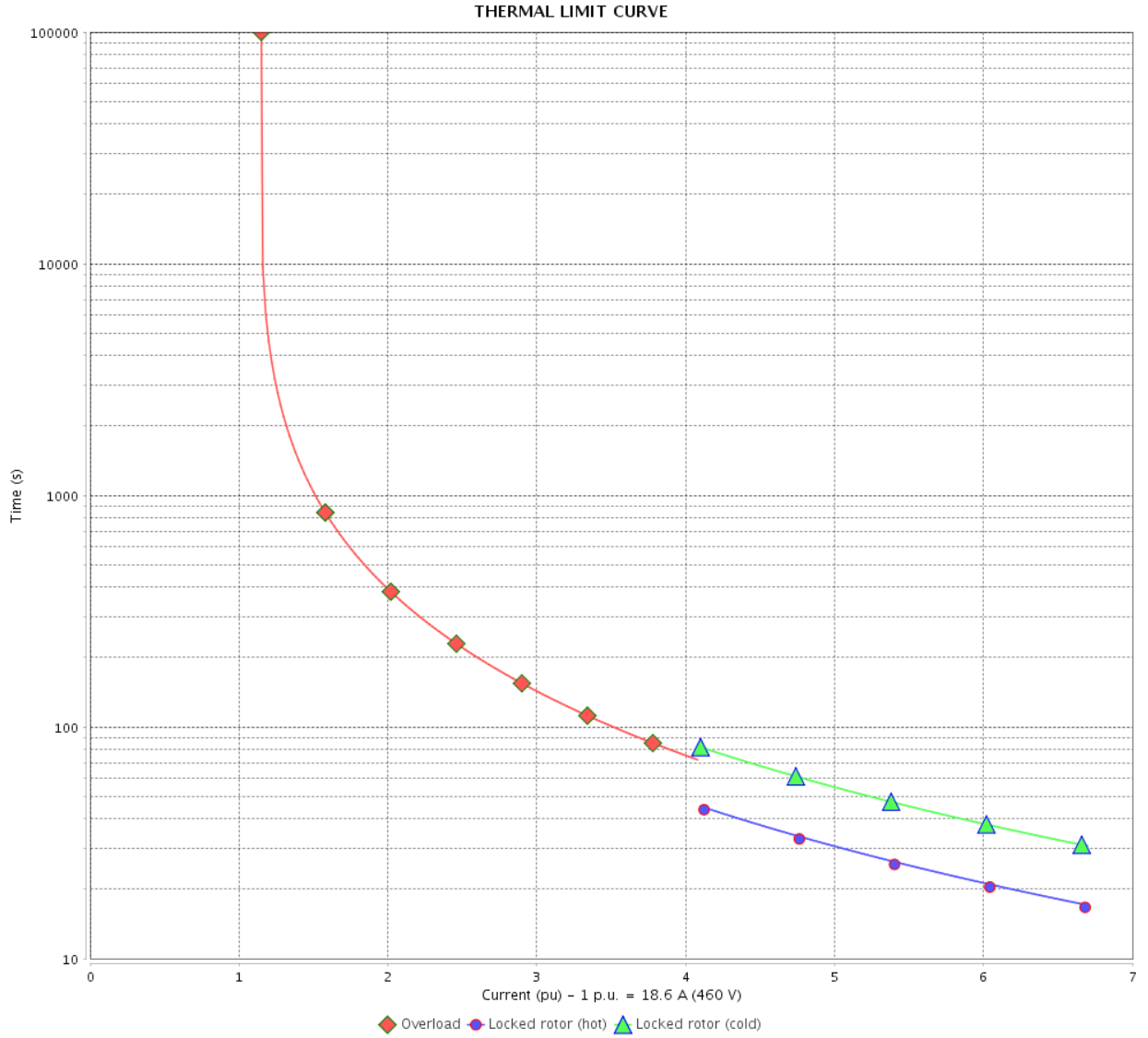
Rev.	Changes Summary	Performed	Checked	Date
Performed by				
Checked by			Page	Revision
Date	13/04/2022		8 / 16	

THERMAL LIMIT CURVE

Three Phase Induction Motor - Squirrel Cage



Customer : _____



Rev.	Changes Summary	Performed	Checked	Date
Performed by		Page 9 / 16 Revision		
Checked by				
Date				

THERMAL LIMIT CURVE



Three Phase Induction Motor - Squirrel Cage

Customer :

Product line : NEMA Premium Efficiency Three-Phase
Product code : 12636473
Catalog # : 01518OT3E254TC-S

Performance : 190-220/380 V 50 Hz 4P

Rated current	: 43.8-37.8/21.9 A	Moment of inertia (J)	: 1.82 sq.ft.lb
LRC	: 5.4	Duty cycle	: Cont.(S1)
Rated torque	: 53.8 ft.lb	Insulation class	: F
Locked rotor torque	: 170 %	Service factor	: 1.15
Breakdown torque	: 220 %	Temperature rise	: 80 K
Rated speed	: 1465 rpm	Design	: B

Heating constant

Cooling constant

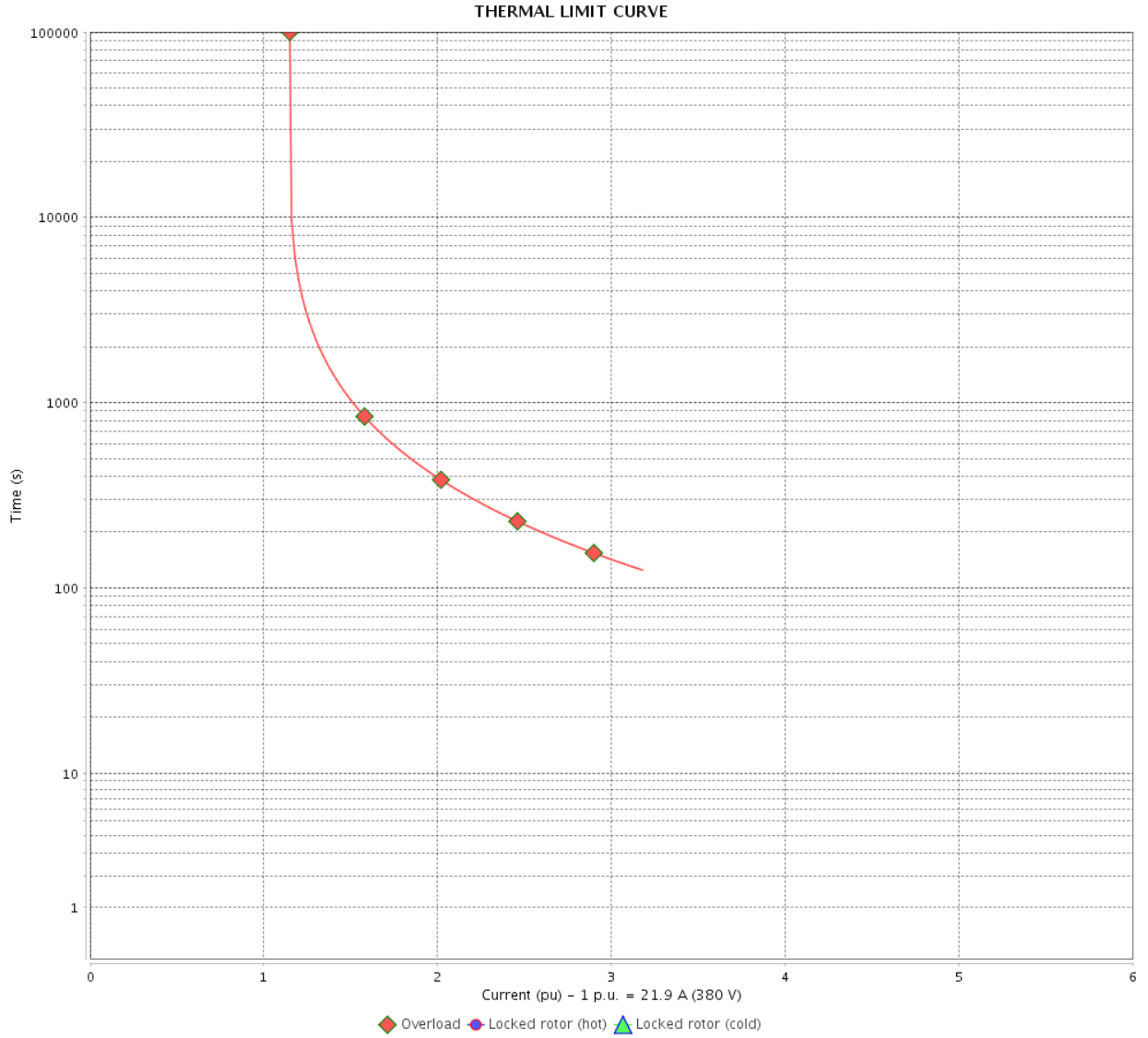
Rev.	Changes Summary	Performed	Checked	Date
Performed by				
Checked by			Page	Revision
Date	13/04/2022		10 / 16	

THERMAL LIMIT CURVE

Three Phase Induction Motor - Squirrel Cage



Customer : _____



Rev.	Changes Summary	Performed	Checked	Date
Performed by		Page		Revision
Checked by		11 / 16		
Date		13/04/2022		

THERMAL LIMIT CURVE



Three Phase Induction Motor - Squirrel Cage

Customer :

Product line : NEMA Premium Efficiency Three-Phase
Product code : 12636473
Catalog # : 01518OT3E254TC-S

Performance : 415 V 50 Hz 4P

Rated current	: 20.9 A	Moment of inertia (J)	: 1.82 sq.ft.lb
LRC	: 6.3	Duty cycle	: Cont.(S1)
Rated torque	: 53.6 ft.lb	Insulation class	: F
Locked rotor torque	: 210 %	Service factor	: 1.15
Breakdown torque	: 270 %	Temperature rise	: 80 K
Rated speed	: 1470 rpm	Design	: B

Heating constant

Cooling constant

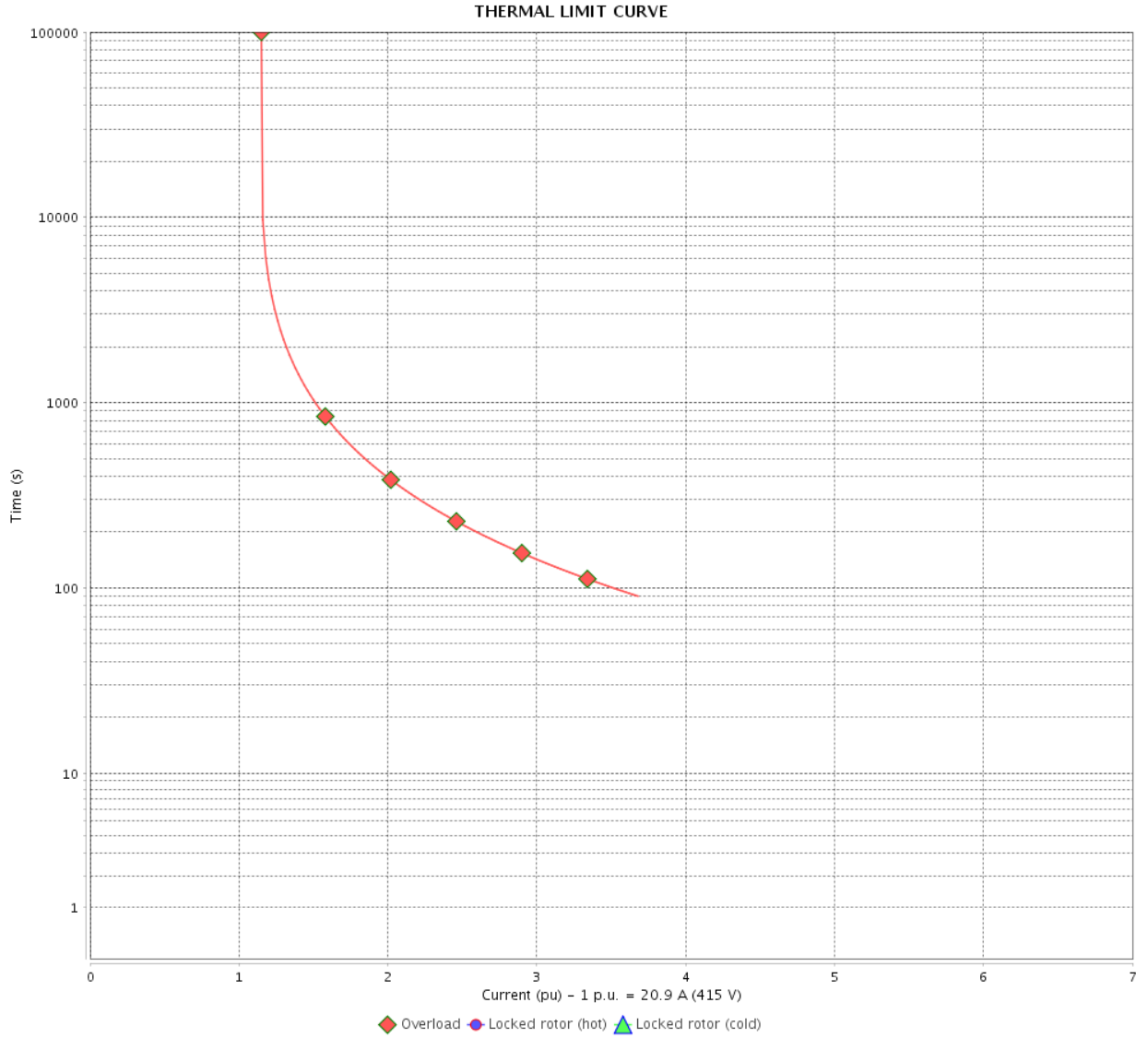
Rev.	Changes Summary	Performed	Checked	Date
Performed by				
Checked by			Page	Revision
Date	13/04/2022		12 / 16	

THERMAL LIMIT CURVE

Three Phase Induction Motor - Squirrel Cage



Customer : _____



Rev.	Changes Summary	Performed	Checked	Date
Performed by		Page		Revision
Checked by		13 / 16		
Date		13/04/2022		

VFD OPERATION CURVE

Three Phase Induction Motor - Squirrel Cage



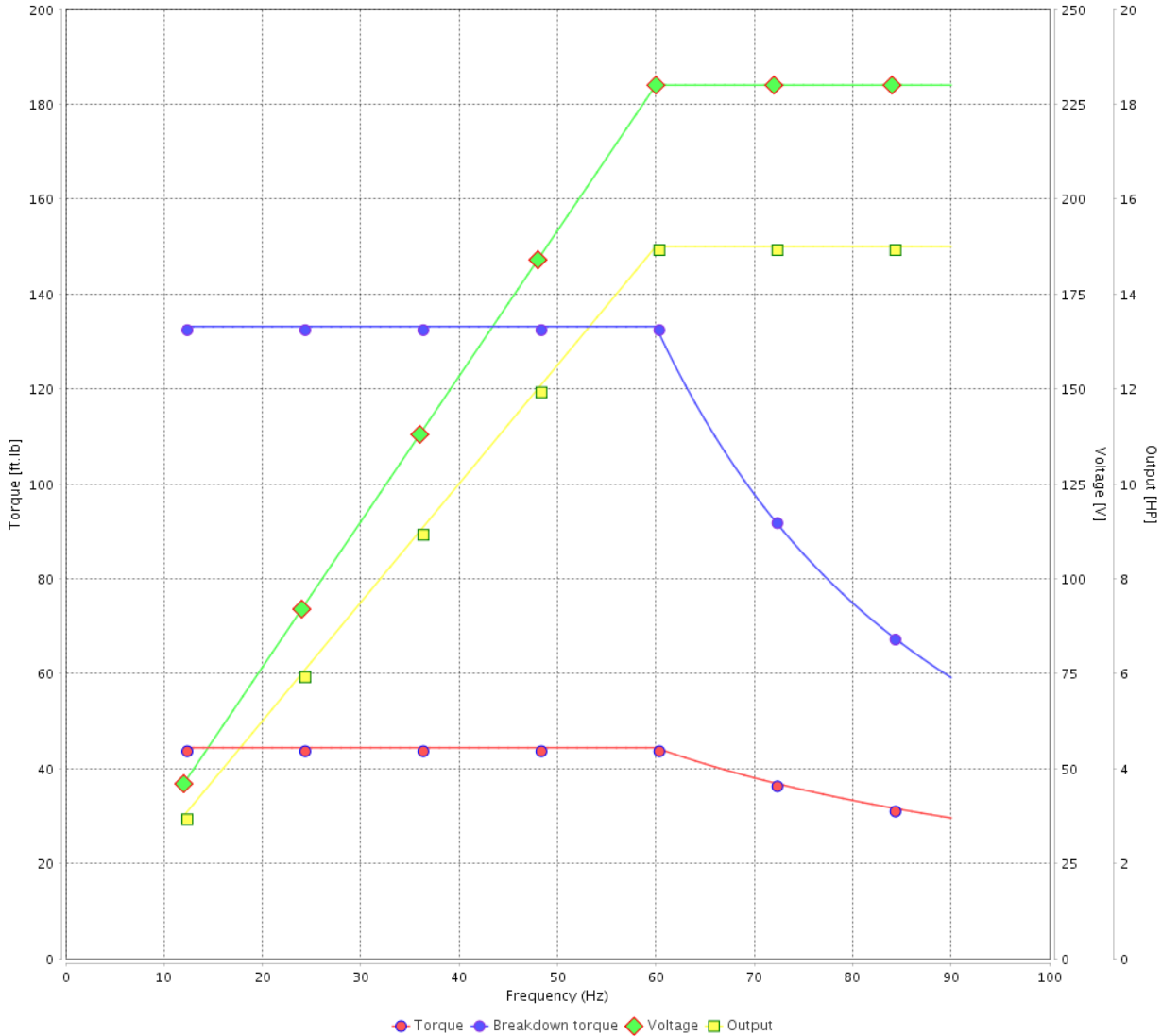
Customer :

Product line : NEMA Premium Efficiency Three-Phase

Product code : 12636473

Catalog # : 01518OT3E254TC-S

VFD OPERATION CURVE



Performance : 230/460 V 60 Hz 4P

Rated current : 37.2/18.6 A
 LRC : 6.7
 Rated torque : 44.4 ft.lb
 Locked rotor torque : 240 %
 Breakdown torque : 300 %
 Rated speed : 1775 rpm

Moment of inertia (J) : 1.82 sq.ft.lb
 Duty cycle : Cont.(S1)
 Insulation class : F
 Service factor : 1.15
 Temperature rise : 80 K
 Design : B

Rev.	Changes Summary	Performed	Checked	Date
Performed by			Page 14 / 16	Revision
Checked by				
Date	13/04/2022			

VFD OPERATION CURVE

Three Phase Induction Motor - Squirrel Cage

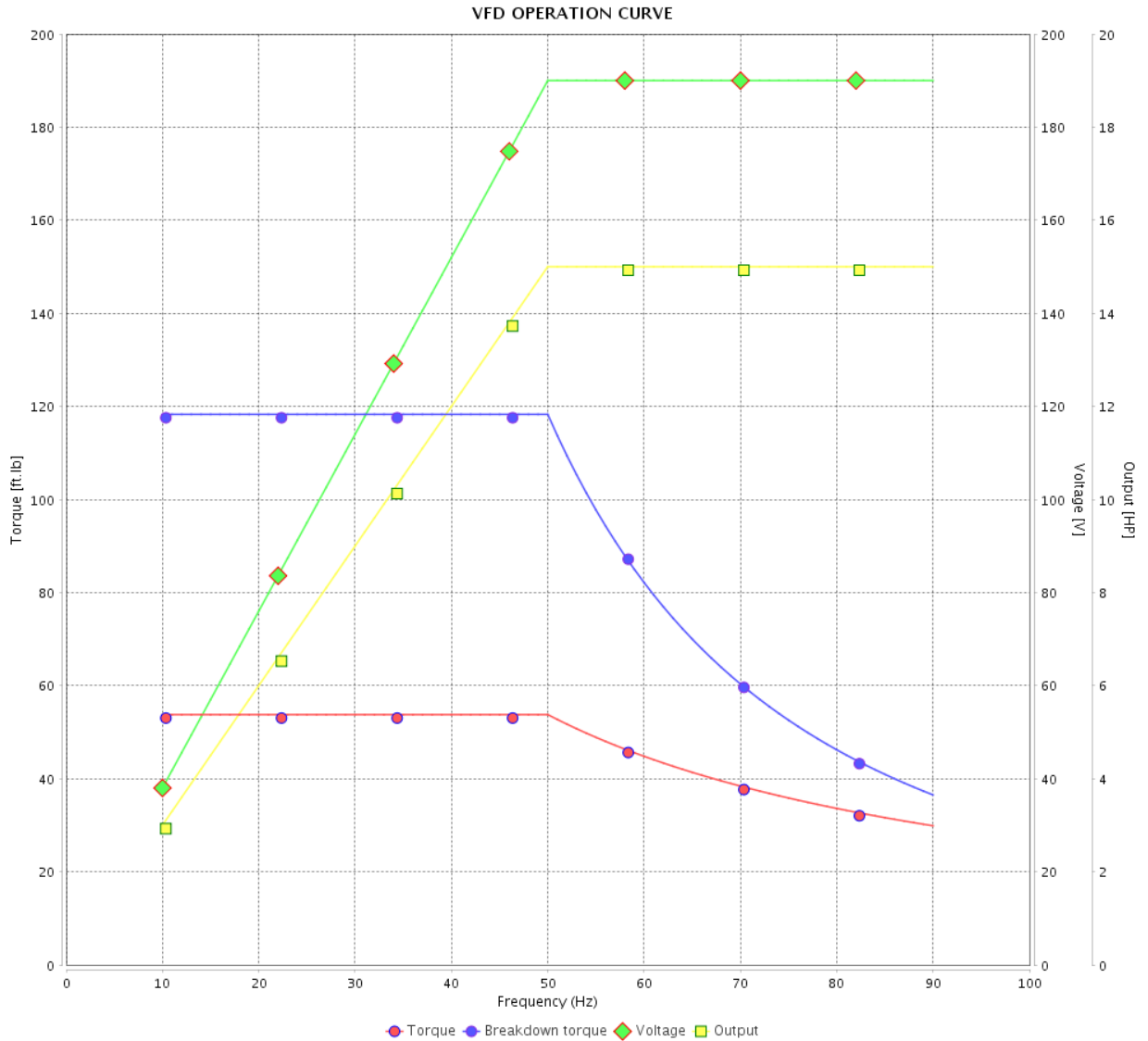


Customer :

Product line : NEMA Premium Efficiency Three-Phase

Product code : 12636473

Catalog # : 01518OT3E254TC-S



Performance : 190-220/380 V 50 Hz 4P

Rated current : 43.8-37.8/21.9 A
 LRC : 5.4
 Rated torque : 53.8 ft.lb
 Locked rotor torque : 170 %
 Breakdown torque : 220 %
 Rated speed : 1465 rpm

Moment of inertia (J) : 1.82 sq.ft.lb
 Duty cycle : Cont.(S1)
 Insulation class : F
 Service factor : 1.15
 Temperature rise : 80 K
 Design : B

Rev.	Changes Summary	Performed	Checked	Date
Performed by		Page		Revision
Checked by		15 / 16		
Date	13/04/2022			

VFD OPERATION CURVE

Three Phase Induction Motor - Squirrel Cage



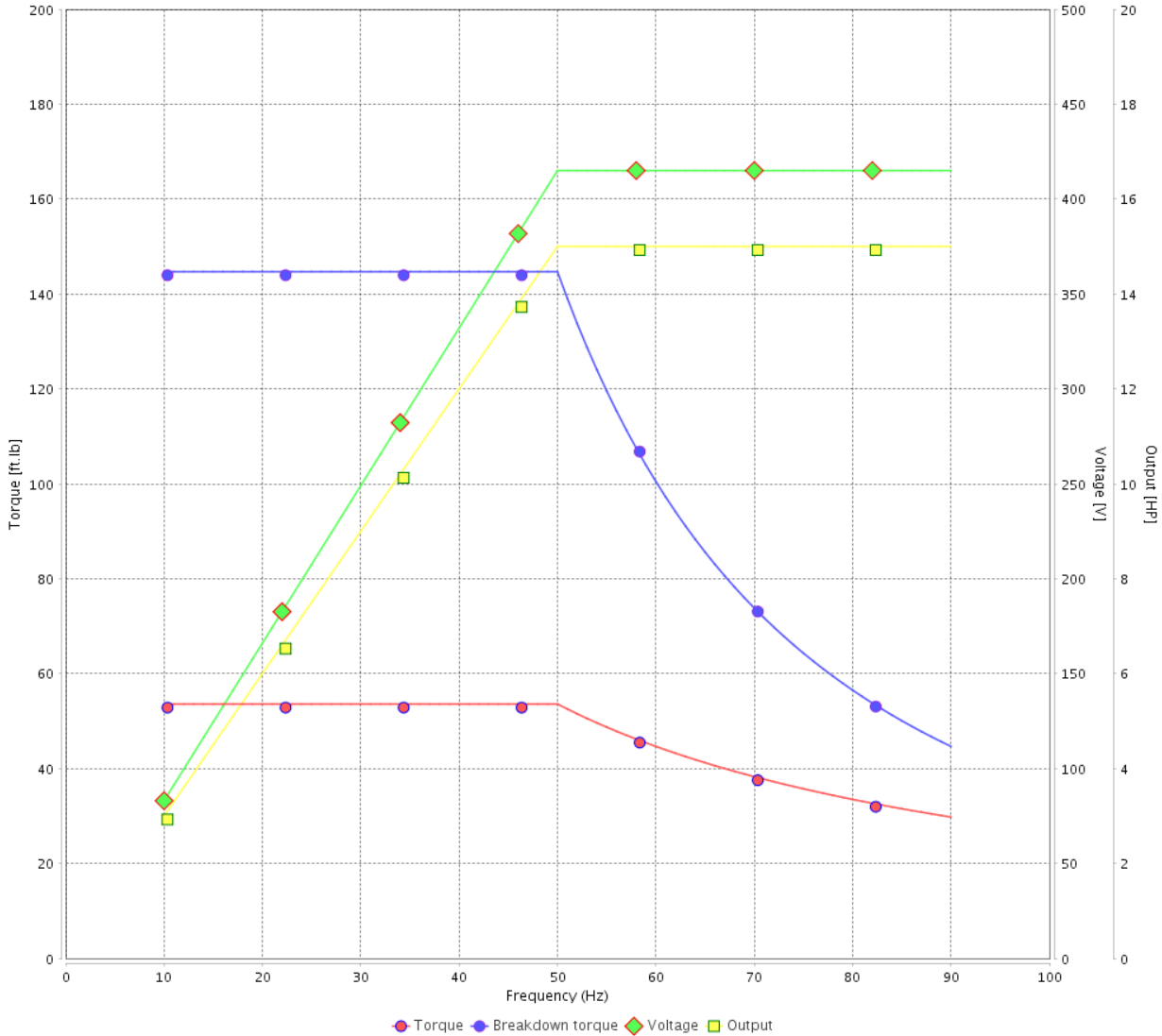
Customer :

Product line : NEMA Premium Efficiency Three-Phase

Product code : 12636473

Catalog # : 01518OT3E254TC-S

VFD OPERATION CURVE

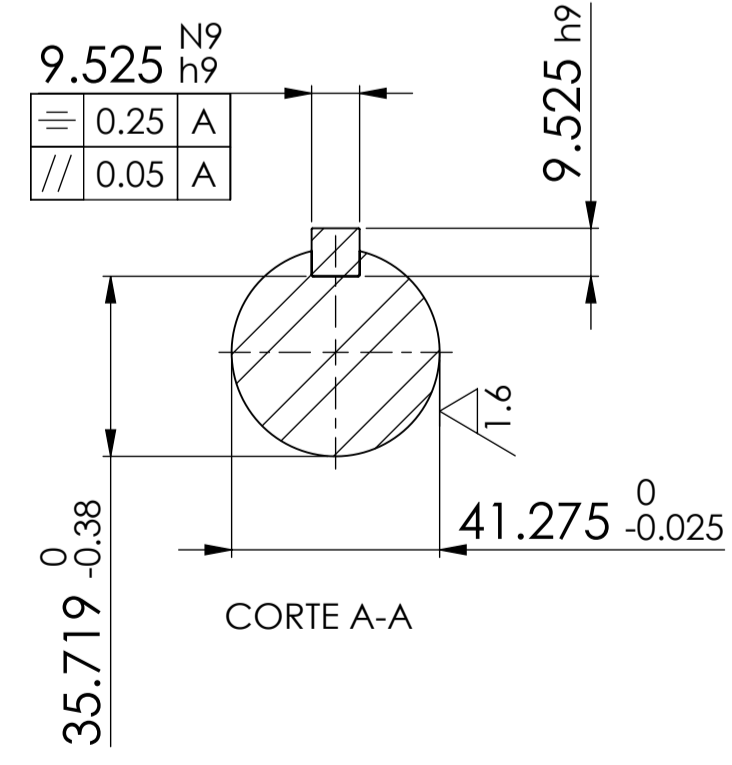
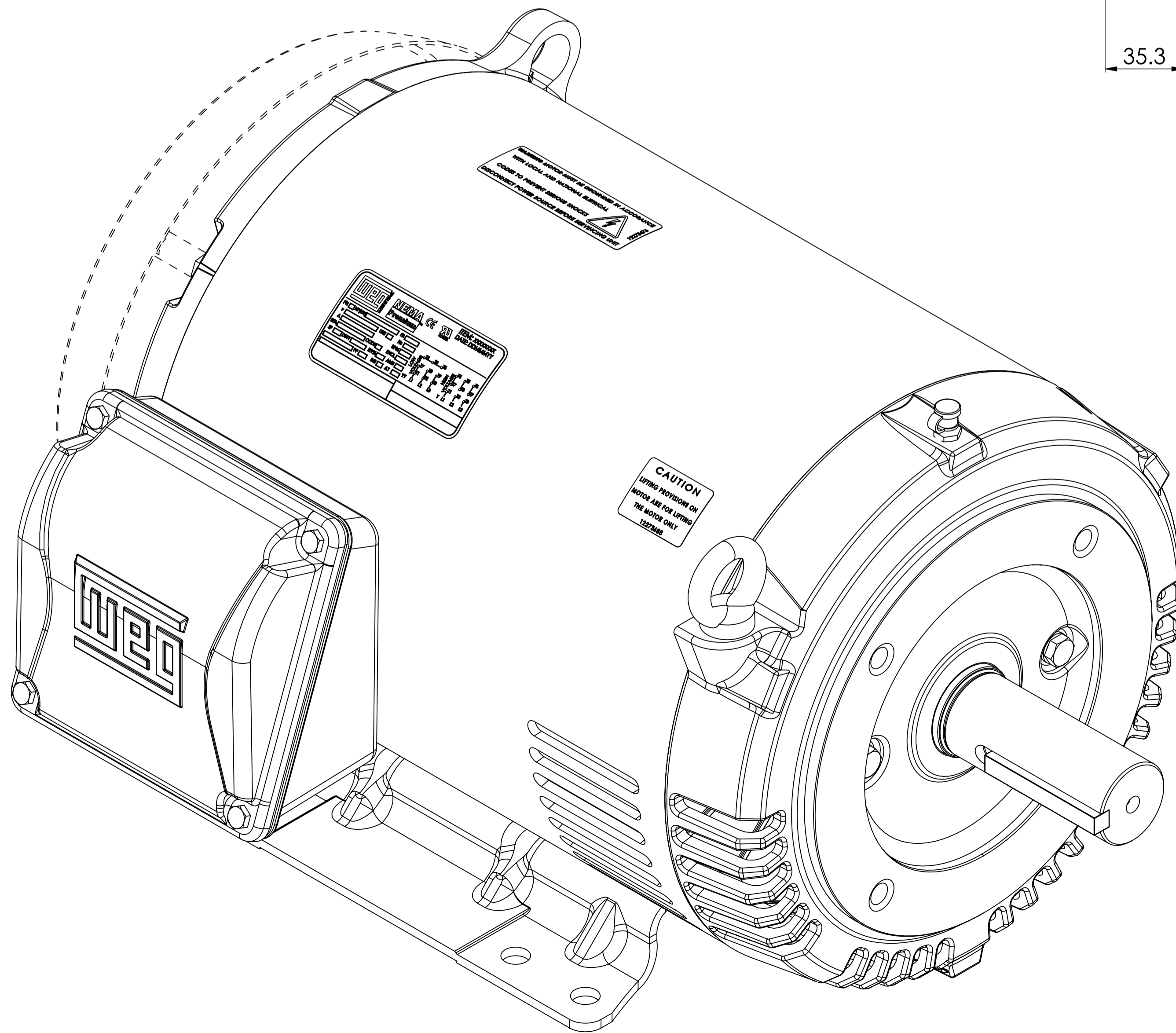
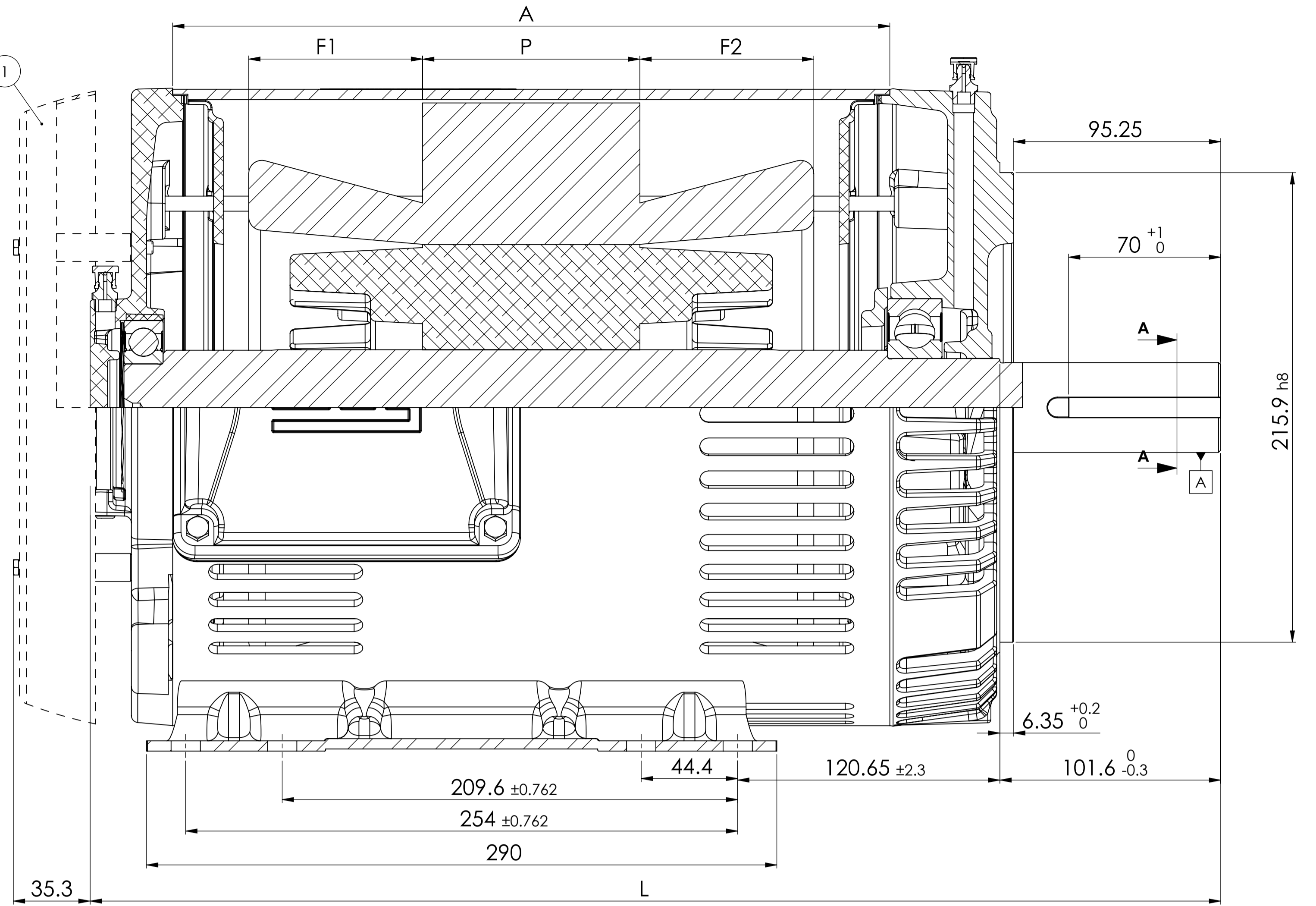
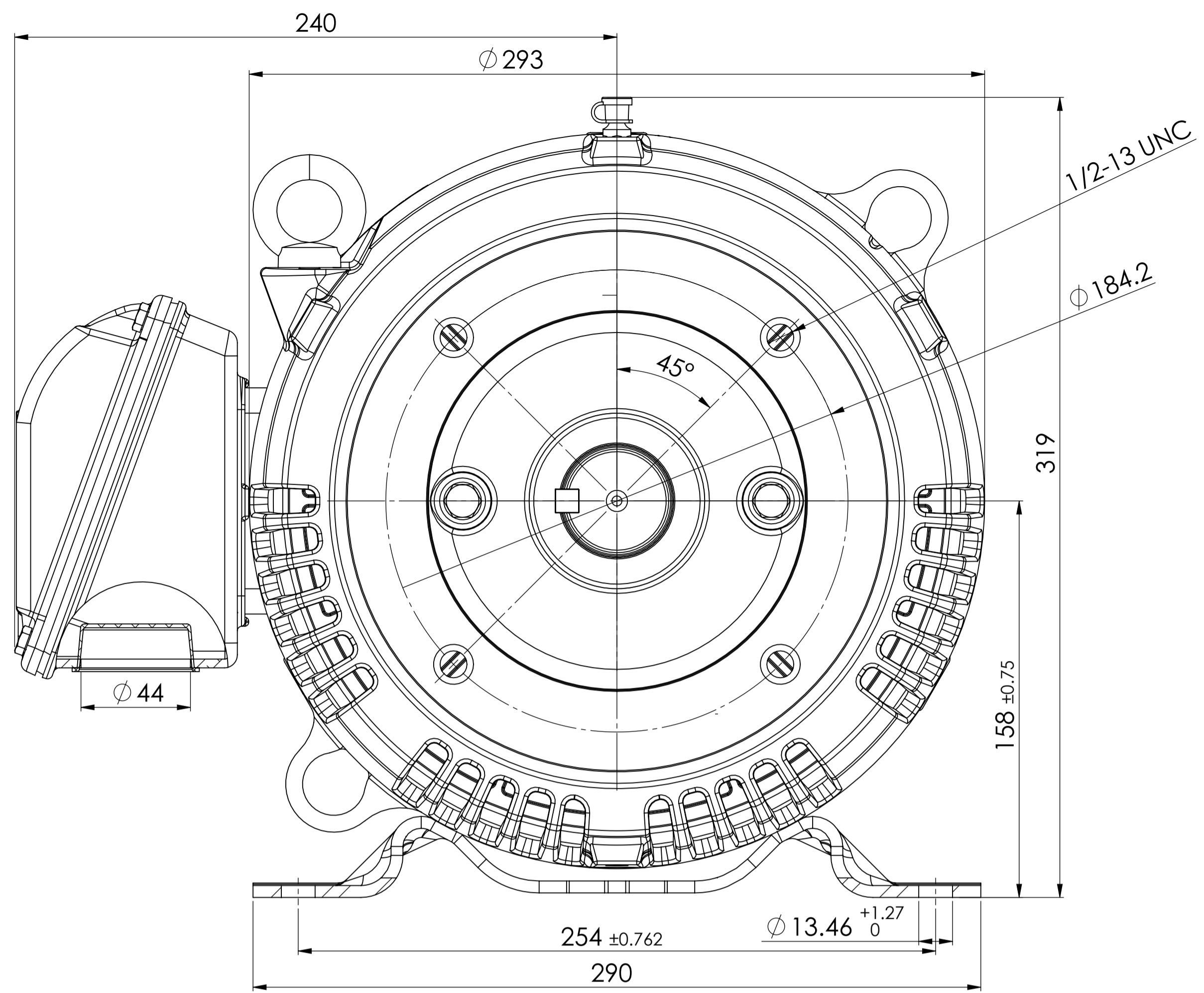


Performance : 415 V 50 Hz 4P

Rated current : 20.9 A
 LRC : 6.3
 Rated torque : 53.6 ft.lb
 Locked rotor torque : 210 %
 Breakdown torque : 270 %
 Rated speed : 1470 rpm

Moment of inertia (J) : 1.82 sq.ft.lb
 Duty cycle : Cont.(S1)
 Insulation class : F
 Service factor : 1.15
 Temperature rise : 80 K
 Design : B

Rev.	Changes Summary	Performed	Checked	Date
Performed by			Page 16 / 16	Revision
Checked by				
Date	13/04/2022			



Cabeça de Bobina	F1	F2
II	80	80
IV - VI	65	65

Cotas / Carcaça	330
A	330
P	80-150
L	520

1. SOMENTE QUANDO INDICADO NA LISTA TÉCNICA DO MOTOR

- BATIMENTO DO FLANGE CONFORME TBG-387
- BATIMENTO DO EIXO CONFORME TBG-178

MASSA BRUTA/GROSS WEIGHT	500001081712	REVISAO NORMA CABEÇA BOBINA	JROPELATO	ESCALA/SCALE	1:5
500000886238	ALT. CONF. CLAIM 413416105		PMAUERBERG	JHONATANP	02.09.2015 05
ECM	LOC	RESUMO DE MODIFICAÇÕES SUMMARY OF MODIFICATIONS	EXECUTADO EXECUTED	VERIFICADO CHECKED	LIBERADO RELEASED
EXEC	RAFAELLOPES	DIMENSIONAL 254 ODP FLANGE			10002036006
VERIFICADO	JTOGNERI			000	05
LIBERADO	24.04.2013	WMO	JARAGUÁ DO SUL	DESENVOLVIMENTO DE PRODUTO	FOLHETA 1 / 1

LIBERADO
CÓPIA SEM CONTROLE
SVD - A1

**NEMA
Premium**

3PT9



Energy Verified

MADE IN MEXICO

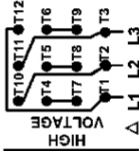
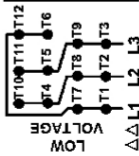
MAT: 12636473 CC029A**W01.T00IC0X0N****MODEL 01518OT3E254TC-S****15MAR2022 S/N:**

PH 3	Hz 60	HP 15
FR 254/6TC		KW 11
DUTY CONT.		V 230/460
ALT 1000 m.a.s.l.		A 37.2/18.6
INS CL F AT 80K		SFA 42.8/21.4
AMB 40°C	DES B	SF 1.15
ENCL ODP	CODE H	PF 0.80
USABLE @ 208V 41.1A		RPM 1775
SF1.00		NEMA NOM. EFF 93.0%

ALTERNATE RATING: 15HP 50Hz 190-220/380-415V SF1.15
43.8-39.4/21.9-20.9A 1465RPM EFF 89.7% (IE1) IEC 60034-1

Inverter duty motor For 80Hz use on VPWM 1000:1 VT, 5:1 CT

DE 6309-Z-C3	ODE 6208-Z-C3	MOBIL POLYREX EM	20000h
---------------------	----------------------	-------------------------	---------------



T1-BLU T2-WHT
T3-ORG T4-YEL
T5-BLK T6-GRY
T7-PNK T8-RED
T9-BRK RED
T10-CURRY
T11-GRN T12-VLT

△△ L1 L2 L3

△ L1 L2 L3

INTERCHANGE ANY TWO LINE WIRES TO REVERSE THE ROTATION



WARNING: Motor must be grounded in accordance with local and national electrical codes to prevent serious electrical shocks. Disconnect power source before servicing unit.



AVERTISSEMENT: Le moteur doit être mis à la terre

conformément aux codes électriques locaux et nationaux afin d'éviter tout

choc électrique grave. Déconnectez l'alimentation avant l'entretien de la machine.

